

Connectivity Production Line Tool

This document contains the release notes for Renesas Connectivity Production Line Tool v_2.0.0.0

Contents

Contents	1
Figures	1
Tables	1
1. Terms and Definitions	2
2. Release Data	2
3. License	2
4. Related Documentation and References	2
5. Release Description	3
5.1 Overview.....	3
5.2 New and Updated Features of v_2.0.0.0	4
5.3 Fixes since Version v_1.0.0.0	4
5.4 Known Issues of v_2.0.0.0	4
5.5 Known Limitations of v_2.0.0.0	4
6. Version 1.0.0.0	5
6.1 Overview.....	5
6.2 New and Updated Features of v_1.0.0.0	6
6.3 Known Issues of v_1.0.0.0	6
6.4 Known Limitations of v_1.0.0.0	7
Appendix A Software Versioning Rules	8
7. Document Revision History	9

Figures

Figure 1. Connectivity Production Line Tool Configuration v_2.0.0.0	3
Figure 2. Connectivity Production Line Tool v_2.0.0.0	3
Figure 3. Connectivity Production Line Tool Configuration v_1.0.0.0	5
Figure 4. Connectivity Production Line Tool v_1.0.0.0	5

Tables

Table 1. Release data.....	2
Table 2. v_2.0.0.0 new features	4
Table 3. v_2.0.0.0 fixes.....	4
Table 4. v_1.0.0.0 new features	6
Table 5. v_1.0.0.0 known issues	6
Table 6. v_1.0.0.0 known limitations	7

1. Terms and Definitions

AIN	Analog Input
CS	Configuration Script
DUT	Device Under Test
GA	General Availability
GPIO	General Purpose Input Output
LA	Limited Availability
PLT	Production Line Tool
RF	Radio Frequency
RFTU	RF Test Unit

2. Release Data

Table 1. Release data

Software	Connectivity Production Line Tool
Device Number	RA6Wx, RRQ610xx
Operating System	Windows 11
Software Release Date	Nov 2025
Software Version Number	2.0.0.0
Software Release Type (Note 1)	FULL (GA)

Note 1 Releases can be of the following types: FULL (GA), FULL (LA), RELEASE CANDIDATE, ENGINEERING, PATCH, or BINARY.

3. License

Licenses covering this software release are listed in the `licensing.txt` file in the Connectivity Production Line Tool installation folder.

4. Related Documentation and References

[1] Connectivity Production Line Tool Manual, Renesas Electronics.

Note 1 References are for the latest published version, unless otherwise indicated.

5. Release Description

5.1 Overview

This is a FULL (GA) release of the Connectivity Production Line Tool that supports production testing and programming for products for the DA14531x SoC and RA6Wx SoC families as well as the RRQ610xx modules.

Figure 1 shows the main window of the Connectivity Production Line Tool Configuration v_2.0.0.0.

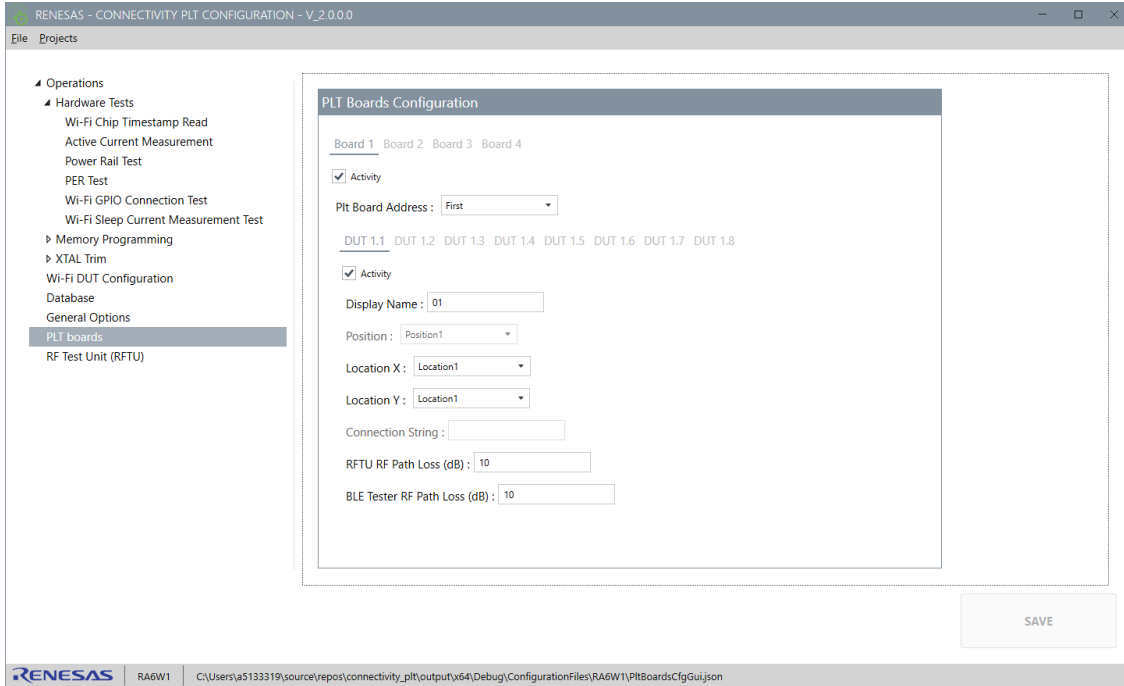


Figure 1. Connectivity Production Line Tool Configuration v_2.0.0.0

Figure 2 shows the main window of the Connectivity Production Line Tool GUI v_2.0.0.0.

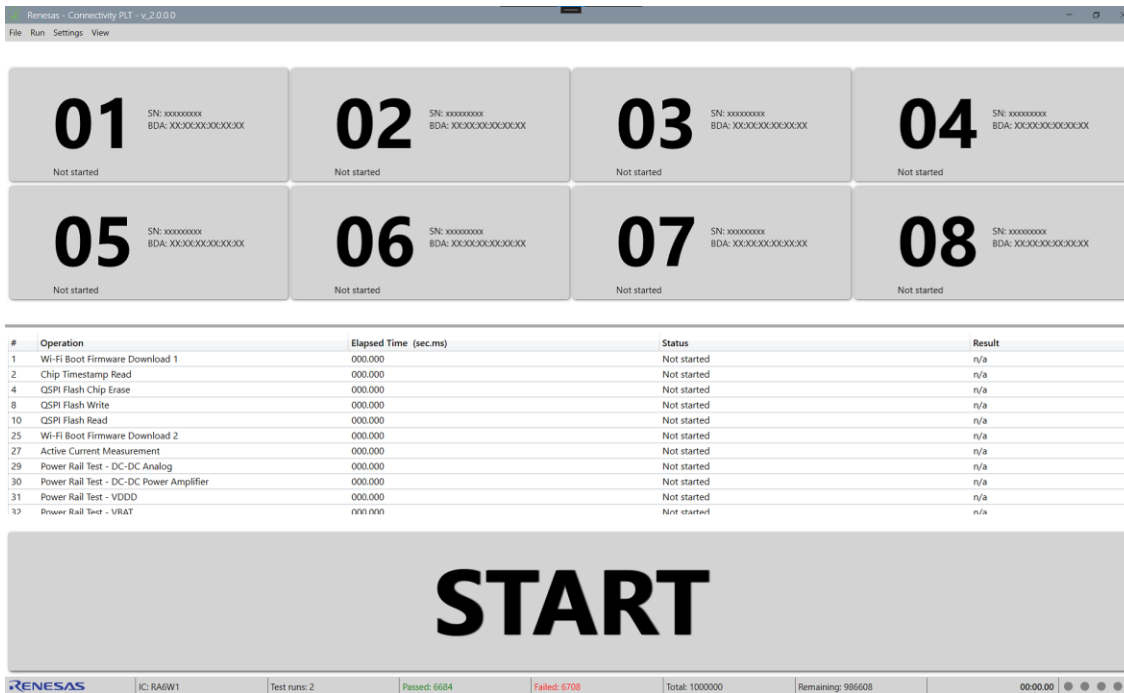


Figure 2. Connectivity Production Line Tool v_2.0.0.0

5.2 New and Updated Features of v_2.0.0.0

Table 2. v_2.0.0.0 new features

Feature number	Description
1	Supports RA6Wx SoC.
2	Supports RRQ610xx modules.
3	Supports RAFW FSP AT commands for production testing.
4	Supports RA6Wx RF Test Unit (RFTU).
5	Retry if tests fail. User selectable from Configuration GUI.
6	Selectively test DUTs in CLI (a <Active DUTs> <First DUT S/N>).
7	Added new DUT log file viewer in Connectivity PLT GUI.

5.3 Fixes since Version v_1.0.0.0

Table 3. v_2.0.0.0 fixes

Fix number	Description
1	Fixed issue 1 of v_1.0.0.0. Improved DUT COM port enumeration timing.
2	Fixed issue 2 of v_1.0.0.0. Improved CSV file result and test naming display.
3	Added overall test result in CSV.
4	Fixed issue with CSV test ordering.
5	Exit CLI after -s command and return a 32-bit value with each bit to be per DUT pass or fail.
6	Fixed issue 1 of v_1.0.0.0. Improved DUT COM port enumeration timing.
7	Fixed issue in Bluetooth® LE scan execution after Bluetooth LE RSSI test.
8	Improved ammeter instrument implementation.
9	Improved binary selection to be burned to a memory.
10	Improved RF path losses to be different per test type.
11	Resolved an issue preventing the SPI Flash Write configuration from being saved.
12	Fixed issue when memory read log file sometimes was empty.
13	Resolved an issue where the memory read log file occasionally generated as empty.

5.4 Known Issues of v_2.0.0.0

No known issues.

5.5 Known Limitations of v_2.0.0.0

Table 4. v_2.0.0.0 known limitations

Issue number	Description
1	External current measurement can only be performed with a single PLT board (up to 8 DUTs).

6. Version 1.0.0.0

Version v_1.0.0.0 of the Connectivity Production Line Tool for DA1453x was released May 2025.

6.1 Overview

This is a FULL (GA) release of the Connectivity Production Line Tool ([Note 1](#)). It supports production testing and programming for products using DA1453x family.

[Figure 3](#) shows the main window of the Connectivity Production Line Tool Configuration v_1.0.0.0.

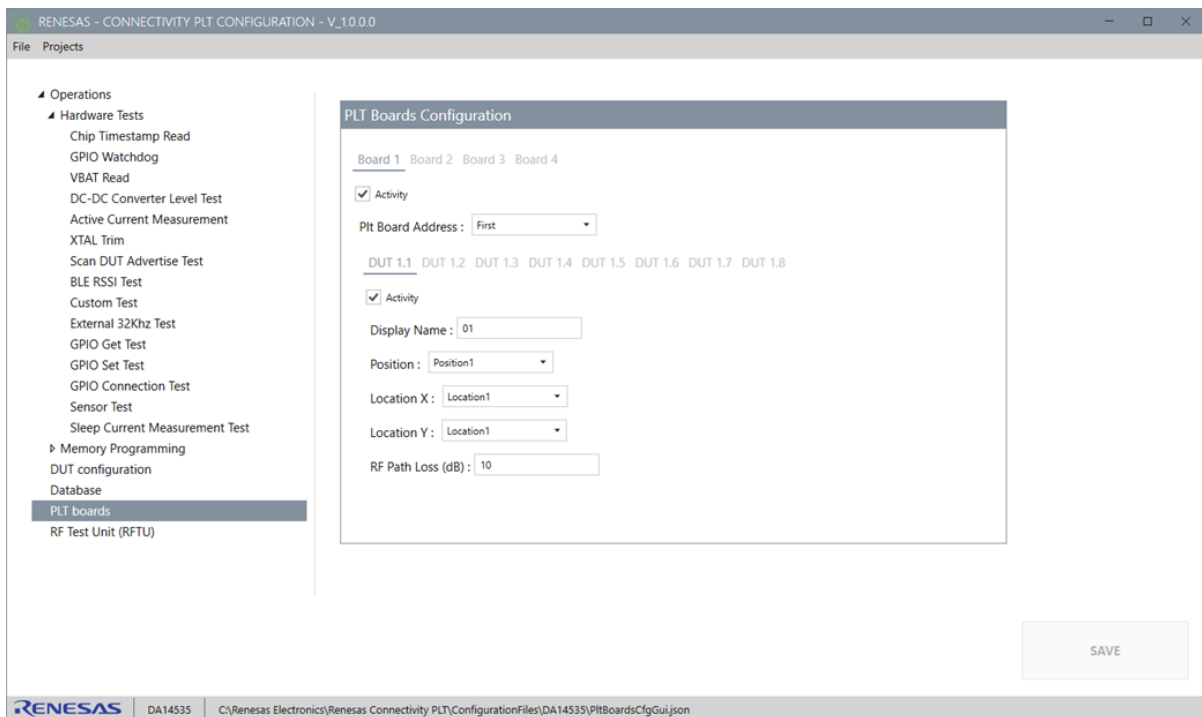


Figure 3. Connectivity Production Line Tool Configuration v_1.0.0.0

[Figure 4](#) shows the main window of the Connectivity Production Line Tool GUI 1.0.0.

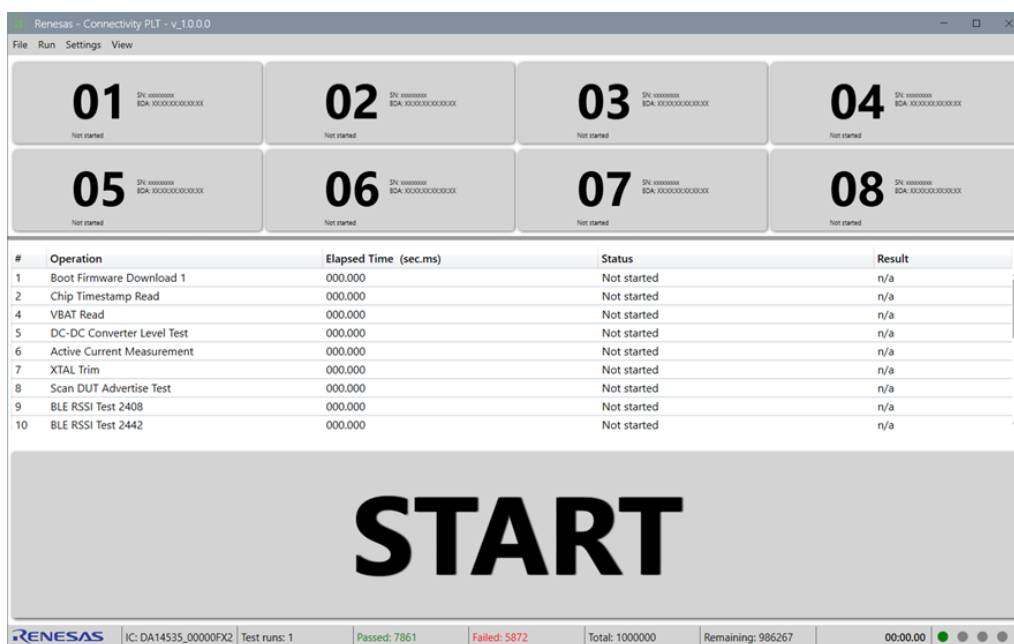


Figure 4. Connectivity Production Line Tool v_1.0.0.0

6.2 New and Updated Features of v_1.0.0.0

Table 4. v_1.0.0.0 new features

Feature number	Description
1	Up to 32x DUTs supported.
2	Adjustable UART level 1.2-3.3 V. Adjustable Reset level 0.9-3.3 V. Adjustable VAUX 0-5 V. GPIO0, GPIO1, GPIO2 selectable I/O per DUT. Adjustable GPIO level 1.2-3.3 V. AIN analog input signal per DUT. Adjustable AIN per DUT with 0-5 V level support.
3	Onboard current measurement with 100 μ A – 300 mA range support per DUT.
4	External RF Test Unit (RFTU). Position flexibility.
	<p>PLT boards can be connected in a daisy chain.</p>
5	Companion board for checking proper operation of the PLT hardware in the field.
6	Redesigned software: <ul style="list-style-type: none"> ▪ Added new test easily. ▪ Modified test sequence. ▪ Created new test.
7	Added emote database for: <ul style="list-style-type: none"> ▪ DUT serial number acquire ▪ DUT Bluetooth LE address acquire ▪ Per DUT memory data acquire ▪ Common memory data acquire ▪ DUT final result update ▪ DUT access counter update.
8	PLT hardware firmware update software tool.

6.3 Known Issues of v_1.0.0.0

Table 5. v_1.0.0.0 known issues

Issue number	Description
1	After pressing the Start button for the first time, the test run typically takes one to two minutes as the software enumerates the DUT COM ports. This occurs only during the first test execution or if the PLT hardware undergoes a power cycle.
2	In rare cases, the DUT number and the start time fields may be missing from the CSV log file.

6.4 Known Limitations of v_1.0.0.0

Table 6. v_1.0.0.0 known limitations

Issue number	Description
1	In CSV log file the RSSI and PER results are not displayed
2	External sleep current measurement can only be performed when a single PLT hardware board is used (up to 8 DUTs).

Appendix A Software Versioning Rules

This describes the software version numbers and does not apply to documentation version numbers (as found in the footer of this document).

Each software version number string consists of four numbers: MAJOR. BRANCH. MINOR. and BUILD.

#MAJOR: It is increased (by one only) if the project undergoes a major modification, for example major ROM changes. It usually changes only when the project sources undergo major restructuring affecting most of the repository. It is initialized at 1.

#BRANCH: Used in the case of concurrent projects that for special reasons need to be spun off the major repository. It corresponds to different versions of the repository code that have to be supported concurrently. In this case each branch number corresponds to a different GIT branch. The basic project has BRANCH id 0.

#MINOR: Odd numbers indicate Engineering (or Patch or Binary) versions, even numbers indicate Full release versions or Release Candidates of Full versions. Each Full release increases this number by one. After the Full release, the number is increased by one again. Therefore, Project releases correspond to release numbers like 2.0.1.xxx, 2.0.2.xxx. etc. The #MINOR number is initialized at 1.

#BUILD: The # BUILD number increases by one at every repository update and thus indicates the total number of changes since repository initialization. The BUILD number is initialized at 1.

7. Document Revision History

This section summarizes the changes made to this document and not to the software that this document describes.

Revision	Date	Description
1.01	Nov 18, 2025	Release of the Connectivity Production Line Tool 2.0.0.0
1.00	May 16, 2025	First version

Status Definitions

Status	Definition
DRAFT	The content of this document is under review and subject to formal approval, which may result in modifications or additions.
APPROVED or unmarked	The content of this document has been approved for publication.

ROHS COMPLIANCE

Renesas Electronics' suppliers certify that its products are in compliance with the requirements of Directive 2011/65/EU of the European Parliament on the restriction of the use of certain hazardous substances in electrical and electronic equipment. RoHS certificates from our suppliers are available on request.

IMPORTANT NOTICE AND DISCLAIMER

RENESAS ELECTRONICS CORPORATION AND ITS SUBSIDIARIES (“RENESAS”) PROVIDES TECHNICAL SPECIFICATIONS AND RELIABILITY DATA (INCLUDING DATASHEETS), DESIGN RESOURCES (INCLUDING REFERENCE DESIGNS), APPLICATION OR OTHER DESIGN ADVICE, WEB TOOLS, SAFETY INFORMATION, AND OTHER RESOURCES “AS IS” AND WITH ALL FAULTS, AND DISCLAIMS ALL WARRANTIES, EXPRESS OR IMPLIED, INCLUDING, WITHOUT LIMITATION, ANY IMPLIED WARRANTIES OF MERCHANTABILITY, FITNESS FOR A PARTICULAR PURPOSE, OR NON-INFRINGEMENT OF THIRD-PARTY INTELLECTUAL PROPERTY RIGHTS.

These resources are intended for developers who are designing with Renesas products. You are solely responsible for (1) selecting the appropriate products for your application, (2) designing, validating, and testing your application, and (3) ensuring your application meets applicable standards, and any other safety, security, or other requirements. These resources are subject to change without notice. Renesas grants you permission to use these resources only to develop an application that uses Renesas products. Other reproduction or use of these resources is strictly prohibited. No license is granted to any other Renesas intellectual property or to any third-party intellectual property. Renesas disclaims responsibility for, and you will fully indemnify Renesas and its representatives against, any claims, damages, costs, losses, or liabilities arising from your use of these resources. Renesas' products are provided only subject to Renesas' Terms and Conditions of Sale or other applicable terms agreed to in writing. No use of any Renesas resources expands or otherwise alters any applicable warranties or warranty disclaimers for these products.

(Disclaimer Rev.1.1 Jan 2025)

Corporate Headquarters

TOYOSU FORESIA, 3-2-24 Toyosu
Koto-ku, Tokyo 135-0061, Japan

www.renesas.com

Contact Information

For further information on a product, technology, the most up-to-date version of a document, or your nearest sales office, please visit www.renesas.com/contact-us/

Trademarks

Renesas and the Renesas logo are trademarks of Renesas Electronics Corporation. All trademarks and registered trademarks are the property of their respective owners.

© 2025 Renesas Electronics Corporation. All rights reserved.