

# RA4M2 Group

RYZ014A PMOD LTE Connectivity with  
RA4M2 MCU  
Quick Start Guide

Renesas RA Family  
RA4 Series

All information contained in these materials, including products and product specifications, represents information on the product at the time of publication and is subject to change by Renesas Electronics Corp. without notice. Please review the latest information published by Renesas Electronics Corp. through various means, including the Renesas Electronics Corp. website (<http://www.renesas.com>).

## Notice

1. Descriptions of circuits, software and other related information in this document are provided only to illustrate the operation of semiconductor products and application examples. You are fully responsible for the incorporation or any other use of the circuits, software, and information in the design of your product or system. Renesas Electronics disclaims any and all liability for any losses and damages incurred by you or third parties arising from the use of these circuits, software, or information.
2. Renesas Electronics hereby expressly disclaims any warranties against and liability for infringement or any other claims involving patents, copyrights, or other intellectual property rights of third parties, by or arising from the use of Renesas Electronics products or technical information described in this document, including but not limited to, the product data, drawings, charts, programs, algorithms, and application examples.
3. No license, express, implied or otherwise, is granted hereby under any patents, copyrights or other intellectual property rights of Renesas Electronics or others.
4. You shall be responsible for determining what licenses are required from any third parties, and obtaining such licenses for the lawful import, export, manufacture, sales, utilization, distribution or other disposal of any products incorporating Renesas Electronics products, if required.
5. You shall not alter, modify, copy, or reverse engineer any Renesas Electronics product, whether in whole or in part. Renesas Electronics disclaims any and all liability for any losses or damages incurred by you or third parties arising from such alteration, modification, copying or reverse engineering.
6. Renesas Electronics products are classified according to the following two quality grades: "Standard" and "High Quality". The intended applications for each Renesas Electronics product depends on the product's quality grade, as indicated below.

"Standard": Computers; office equipment; communications equipment; test and measurement equipment; audio and visual equipment; home electronic appliances; machine tools; personal electronic equipment; industrial robots; etc.

"High Quality": Transportation equipment (automobiles, trains, ships, etc.); traffic control (traffic lights); large-scale communication equipment; key financial terminal systems; safety control equipment; etc.

Unless expressly designated as a high reliability product or a product for harsh environments in a Renesas Electronics data sheet or other Renesas Electronics document, Renesas Electronics products are not intended or authorized for use in products or systems that may pose a direct threat to human life or bodily injury (artificial life support devices or systems; surgical implantations; etc.), or may cause serious property damage (space system; undersea repeaters; nuclear power control systems; aircraft control systems; key plant systems; military equipment; etc.). Renesas Electronics disclaims any and all liability for any damages or losses incurred by you or any third parties arising from the use of any Renesas Electronics product that is inconsistent with any Renesas Electronics data sheet, user's manual or other Renesas Electronics document.

7. No semiconductor product is absolutely secure. Notwithstanding any security measures or features that may be implemented in Renesas Electronics hardware or software products, Renesas Electronics shall have absolutely no liability arising out of any vulnerability or security breach, including but not limited to any unauthorized access to or use of a Renesas Electronics product or a system that uses a Renesas Electronics product. RENESAS ELECTRONICS DOES NOT WARRANT OR GUARANTEE THAT RENESAS ELECTRONICS PRODUCTS, OR ANY SYSTEMS CREATED USING RENESAS ELECTRONICS PRODUCTS WILL BE INVULNERABLE OR FREE FROM CORRUPTION, ATTACK, VIRUSES, INTERFERENCE, HACKING, DATA LOSS OR THEFT, OR OTHER SECURITY INTRUSION ("Vulnerability Issues"). RENESAS ELECTRONICS DISCLAIMS ANY AND ALL RESPONSIBILITY OR LIABILITY ARISING FROM OR RELATED TO ANY VULNERABILITY ISSUES. FURTHERMORE, TO THE EXTENT PERMITTED BY APPLICABLE LAW, RENESAS ELECTRONICS DISCLAIMS ANY AND ALL WARRANTIES, EXPRESS OR IMPLIED, WITH RESPECT TO THIS DOCUMENT AND ANY RELATED OR ACCOMPANYING SOFTWARE OR HARDWARE, INCLUDING BUT NOT LIMITED TO THE IMPLIED WARRANTIES OF MERCHANTABILITY, OR FITNESS FOR A PARTICULAR PURPOSE.
8. When using Renesas Electronics products, refer to the latest product information (data sheets, user's manuals, application notes, "General Notes for Handling and Using Semiconductor Devices" in the reliability handbook, etc.), and ensure that usage conditions are within the ranges specified by Renesas Electronics with respect to maximum ratings, operating power supply voltage range, heat dissipation characteristics, installation, etc. Renesas Electronics disclaims any and all liability for any malfunctions, failure or accident arising out of the use of Renesas Electronics products outside of such specified ranges.
9. Although Renesas Electronics endeavors to improve the quality and reliability of Renesas Electronics products, semiconductor products have specific characteristics, such as the occurrence of failure at a certain rate and malfunctions under certain use conditions. Unless designated as a high reliability product or a product for harsh environments in a Renesas Electronics data sheet or other Renesas Electronics document, Renesas Electronics products are not subject to radiation resistance design. You are responsible for implementing safety measures to guard against the possibility of bodily injury, injury or damage caused by fire, and/or danger to the public in the event of a failure or malfunction of Renesas Electronics products, such as safety design for hardware and software, including but not limited to redundancy, fire control and malfunction prevention, appropriate treatment for aging degradation or any other appropriate measures. Because the evaluation of microcomputer software alone is very difficult and impractical, you are responsible for evaluating the safety of the final products or systems manufactured by you.
10. Please contact a Renesas Electronics sales office for details as to environmental matters such as the environmental compatibility of each Renesas Electronics product. You are responsible for carefully and sufficiently investigating applicable laws and regulations that regulate the inclusion or use of controlled substances, including without limitation, the EU RoHS Directive, and using Renesas Electronics products in compliance with all these applicable laws and regulations. Renesas Electronics disclaims any and all liability for damages or losses occurring as a result of your noncompliance with applicable laws and regulations.
11. Renesas Electronics products and technologies shall not be used for or incorporated into any products or systems whose manufacture, use, or sale is prohibited under any applicable domestic or foreign laws or regulations. You shall comply with any applicable export control laws and regulations promulgated and administered by the governments of any countries asserting jurisdiction over the parties or transactions.
12. It is the responsibility of the buyer or distributor of Renesas Electronics products, or any other party who distributes, disposes of, or otherwise sells or transfers the product to a third party, to notify such third party in advance of the contents and conditions set forth in this document.
13. This document shall not be reprinted, reproduced or duplicated in any form, in whole or in part, without prior written consent of Renesas Electronics.
14. Please contact a Renesas Electronics sales office if you have any questions regarding the information contained in this document or Renesas Electronics products.

(Note1) "Renesas Electronics" as used in this document means Renesas Electronics Corporation and also includes its directly or indirectly controlled subsidiaries.

(Note2) "Renesas Electronics product(s)" means any product developed or manufactured by or for Renesas Electronics.

(Rev.5.0-1 October 2020)

## Corporate Headquarters

TOYOSU FORESIA, 3-2-24 Toyosu,  
Koto-ku, Tokyo 135-0061, Japan

[www.renesas.com](http://www.renesas.com)

## Trademarks

Renesas and the Renesas logo are trademarks of Renesas Electronics Corporation. All trademarks and registered trademarks are the property of their respective owners.

## Contact information

For further information on a product, technology, the most up-to-date version of a document, or your nearest sales office, please visit:

[www.renesas.com/contact/](http://www.renesas.com/contact/).

# General Precautions in the Handling of Microprocessing Unit and Microcontroller Unit Products

The following usage notes are applicable to all Microprocessing unit and Microcontroller unit products from Renesas. For detailed usage notes on the products covered by this document, refer to the relevant sections of the document as well as any technical updates that have been issued for the products.

## 1. Precaution against Electrostatic Discharge (ESD)

A strong electrical field, when exposed to a CMOS device, can cause destruction of the gate oxide and ultimately degrade the device operation. Steps must be taken to stop the generation of static electricity as much as possible, and quickly dissipate it when it occurs. Environmental control must be adequate. When it is dry, a humidifier should be used. This is recommended to avoid using insulators that can easily build up static electricity. Semiconductor devices must be stored and transported in an anti-static container, static shielding bag or conductive material. All test and measurement tools including work benches and floors must be grounded. The operator must also be grounded using a wrist strap. Semiconductor devices must not be touched with bare hands. Similar precautions must be taken for printed circuit boards with mounted semiconductor devices.

## 2. Processing at power-on

The state of the product is undefined at the time when power is supplied. The states of internal circuits in the LSI are indeterminate and the states of register settings and pins are undefined at the time when power is supplied. In a finished product where the reset signal is applied to the external reset pin, the states of pins are not guaranteed from the time when power is supplied until the reset process is completed. In a similar way, the states of pins in a product that is reset by an on-chip power-on reset function are not guaranteed from the time when power is supplied until the power reaches the level at which resetting is specified.

## 3. Input of signal during power-off state

Do not input signals or an I/O pull-up power supply while the device is powered off. The current injection that results from input of such a signal or I/O pull-up power supply may cause malfunction and the abnormal current that passes in the device at this time may cause degradation of internal elements. Follow the guideline for input signal during power-off state as described in your product documentation.

## 4. Handling of unused pins

Handle unused pins in accordance with the directions given under handling of unused pins in the manual. The input pins of CMOS products are generally in the high-impedance state. In operation with an unused pin in the open-circuit state, extra electromagnetic noise is induced in the vicinity of the LSI, an associated shoot-through current flows internally, and malfunctions occur due to the false recognition of the pin state as an input signal become possible.

## 5. Clock signals

After applying a reset, only release the reset line after the operating clock signal becomes stable. When switching the clock signal during program execution, wait until the target clock signal is stabilized. When the clock signal is generated with an external resonator or from an external oscillator during a reset, ensure that the reset line is only released after full stabilization of the clock signal. Additionally, when switching to a clock signal produced with an external resonator or by an external oscillator while program execution is in progress, wait until the target clock signal is stable.

## 6. Voltage application waveform at input pin

Waveform distortion due to input noise or a reflected wave may cause malfunction. If the input of the CMOS device stays in the area between  $V_{IL}$  (Max.) and  $V_{IH}$  (Min.) due to noise, for example, the device may malfunction. Take care to prevent chattering noise from entering the device when the input level is fixed, and also in the transition period when the input level passes through the area between  $V_{IL}$  (Max.) and  $V_{IH}$  (Min.).

## 7. Prohibition of access to reserved addresses

Access to reserved addresses is prohibited. The reserved addresses are provided for possible future expansion of functions. Do not access these addresses as the correct operation of the LSI is not guaranteed.

## 8. Differences between products

Before changing from one product to another, for example to a product with a different part number, confirm that the change will not lead to problems. The characteristics of a microprocessing unit or microcontroller unit products in the same group but having a different part number might differ in terms of internal memory capacity, layout pattern, and other factors, which can affect the ranges of electrical characteristics, such as characteristic values, operating margins, immunity to noise, and amount of radiated noise. When changing to a product with a different part number, implement a system-evaluation test for the given product.

## Renesas EK-RA4M2 Disclaimer

By using this EK-RA4M2, the User accepts the following terms, which are in addition to, and control in the event of disagreement, with Renesas' General Terms and Conditions available at [renesas.com/legal-notices](https://www.renesas.com/legal-notices).

The EK-RA4M2 is not guaranteed to be error free, and the entire risk as to the results and performance of the EK-RA4M2 is assumed by the User. The EK-RA4M2 is provided by Renesas on an "as is" basis without warranty of any kind whether express or implied, including but not limited to the implied warranties of good workmanship, fitness for a particular purpose, title, merchantability, and non-infringement of intellectual property rights. Renesas expressly disclaims any implied warranty.

Renesas does not consider the EK-RA4M2 to be a finished product and therefore the EK-RA4M2 may not comply with some requirements applicable to finished products, including, but not limited to recycling, restricted substances and electromagnetic compatibility regulations. Refer to Certifications section, for information about certifications and compliance information for the EK-RA4M2. It is the kit User's responsibility to make sure the kit meets any local requirements applicable to their region.

Renesas or its affiliates shall in no event be liable for any loss of profit, loss of data, loss of contract, loss of business, damage to reputation or goodwill, any economic loss, any reprogramming or recall costs (whether the foregoing losses are direct or indirect) nor shall Renesas or its affiliates be liable for any other direct or indirect special, incidental or consequential damages arising out of or in relation to the use of this EK-RA4M2, even if Renesas or its affiliates have been advised of the possibility of such damages.

Renesas has used reasonable care in preparing the information included in this document, but Renesas does not warrant that such information is error free nor does Renesas guarantee an exact match for every application or parameter to part numbers designated by other vendors listed herein. The information provided in this document is intended solely to enable the use of Renesas products. No express or implied license to any intellectual property right is granted by this document or in connection with the sale of Renesas products. Renesas reserves the right to make changes to specifications and product descriptions at any time without notice. Renesas assumes no liability for any damages incurred by you resulting from errors in or omissions from the information included herein. Renesas cannot verify, and assumes no liability for, the accuracy of information available on another company's website.

## Precautions

This Evaluation Kit is only intended for use in a laboratory environment under ambient temperature and humidity conditions. A safe separation distance should be used between this and any sensitive equipment. Its use outside the laboratory, classroom, study area, or similar such area invalidates conformity with the protection requirements of the Electromagnetic Compatibility Directive and could lead to prosecution.

The product generates, uses, and can radiate radio frequency energy and may cause harmful interference to radio communications. There is no guarantee that interference will not occur in a particular installation. If this equipment causes harmful interference to radio or television reception, which can be determined by turning the equipment off or on, you are encouraged to try to correct the interference by one or more of the following measures:

- Ensure attached cables do not lie across the equipment.
- Reorient the receiving antenna.
- Increase the distance between the equipment and the receiver.
- Connect the equipment into an outlet on a circuit different from that which the receiver is connected.
- Power down the equipment when not in use.
- Consult the dealer or an experienced radio/TV technician for help.

Note: It is recommended that wherever possible shielded interface cables are used.

The product is potentially susceptible to certain EMC phenomena. To mitigate against them it is recommended that the following measures be undertaken:

- The user is advised that mobile phones should not be used within 10 m of the product when in use.
- The user is advised to take ESD precautions when handling the equipment.

The Evaluation Kit does not represent an ideal reference design for an end product and does not fulfill the regulatory standards for an end product.

## Renesas RA Family

**RYZ014A PMOD with EK-RA4M2**
**Contents**

1. Introduction.....	6
1.1 Assumptions and Advisory Notes.....	6
2. Kit Contents .....	6
3. EK-RA4M2 Kit Setup .....	6
4. Overview of the RYZ014A PMOD Example Project .....	7
5. Running the RYZ014A PMOD Example Project.....	7
5.1 Flashing the Example Program on the EK-RA4M2 Board .....	7
5.2 Connecting and Powering Up the EK-RA4M2 Board .....	9
5.3 Running the RYZ014A PMOD Example Project .....	9
6. Activating the SIM Card .....	13
7. Troubleshooting .....	14
7.1 Hardware Setup.....	14
7.2 Power Problem .....	14
7.3 SIM Card Activation Problem .....	15
7.4 Illegible/No Terminal Output (Tera Term) .....	15
7.5 Unable to Read RYZ014A Board Information .....	15
7.6 Contact Renesas Support .....	15
8. Next Steps .....	16
9. Website and Support .....	18
Revision History .....	19

**Figures**

Figure 1. EK-RA4M2 Setup with RYZ014A PMOD Board Connected.....	7
Figure 2. Creating a New Project on Renesas Flash Programmer .....	8
Figure 3. Main Window of Renesas Flash Programmer After Creating a New Project.....	8
Figure 4. Connecting the EK-RA4M2 Board to the Host PC via USB Full Speed Port.....	9
Figure 5. USB Serial Device in Windows Device Manager .....	10
Figure 6. Selecting the Serial Port on Tera Term.....	10
Figure 7. Selecting 115200 on the Speed Pulldown .....	11
Figure 8. Welcome and Main Menu.....	11

Figure 9. Board Information.....	12
Figure 10. RYZ014A PMOD Information.....	12
Figure 11. Validating SIM Activation – SIM Card Active .....	13
Figure 12. Activating the SIM Card.....	13
Figure 13. Opening the FSP Configuration .....	16
Figure 14. Modifying the Board Selection.....	17
Figure 15. Modifying the Pin Configuration .....	17
Figure 16. Generate Project Content from FSP Configuration.....	18
Figure 17. Building the Project .....	18

## 1. Introduction

This Quick Start Guide (QSG) provides:

- An overview of the RYZ014A PMOD example project for the EK-RA4M2 board.
- Instructions for flashing the RYZ014A PMOD example project code using Renesas Flash Programmer.
- Instructions for running the RYZ014A PMOD example project on the EK-RA4M2 board.

### 1.1 Assumptions and Advisory Notes

1. Tool experience: It is assumed that the user has prior experience in using a serial terminal emulation program such as Tera Term.
2. Subject knowledge: It is assumed that the user has basic knowledge about microcontrollers, embedded systems, LTE communication and AT commands.
3. The screen shots provided throughout this document are for reference. The actual screen content may differ depending on the version of software and development tools used.

## 2. Kit Contents

The following components are required:

1. RYZ014A PMOD board with external antenna (RTKYZ014A0B00000BE)
2. EK-RA4M2 board ([renesas.com/ra/ek-ra4m2](https://www.renesas.com/ra/ek-ra4m2))
3. 2 x Micro USB device cables (micro-B)
4. Truphone SIM card

## 3. EK-RA4M2 Kit Setup

First, disconnect the micro-USB power cable (connector J11) from the board. The RYZ014A PMOD board should be connected to PMOD2 (connector J25) with the external antenna attached (see Figure 1). The included SIM card must be inserted in the card slot on the underside of the RYZ014A PMOD board. Connect the second micro-USB cable to RYZ014A board (connector CN4) for external powering of PMOD and the other end of cable to a PC USB port. You may now reconnect the micro-USB power cable (connector J11) to a PC USB port.

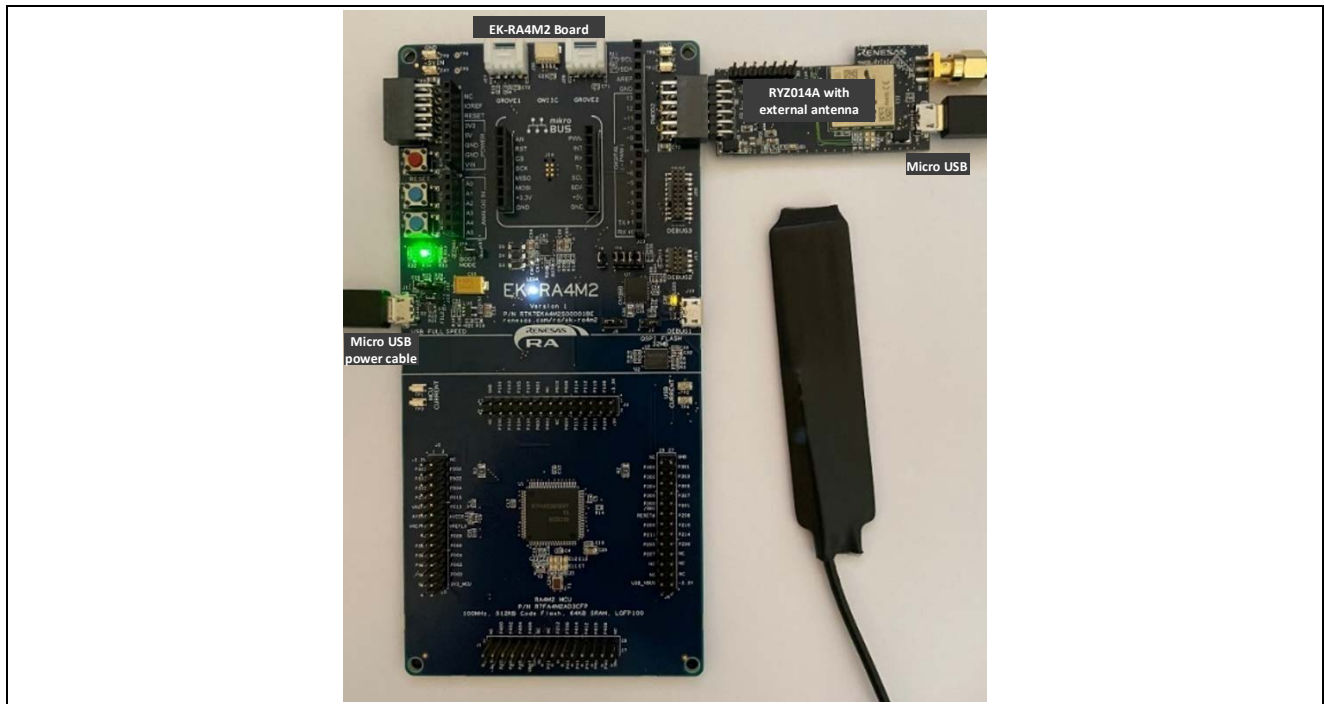


Figure 1. EK-RA4M2 Setup with RYZ014A PMOD Board Connected

#### 4. Overview of the RYZ014A PMOD Example Project

The RYZ014A PMOD example project allows the user to test a RYZ014A PMOD module and SIM card connectivity through a serial terminal menu.

When the EK-RA4M2 board running the RYZ014A PMOD example project is connected to a host PC via USB as a Full Speed CDC Device, the kit and RYZ014A PMOD information can be viewed, and the included SIM card activation can be validated.

#### 5. Running the RYZ014A PMOD Example Project

This section lists the requirements and instructions to power up the EK-RA4M2 board, flash the EK-RA4M2 board, and run the RYZ014A PMOD example project.

##### Hardware Requirements

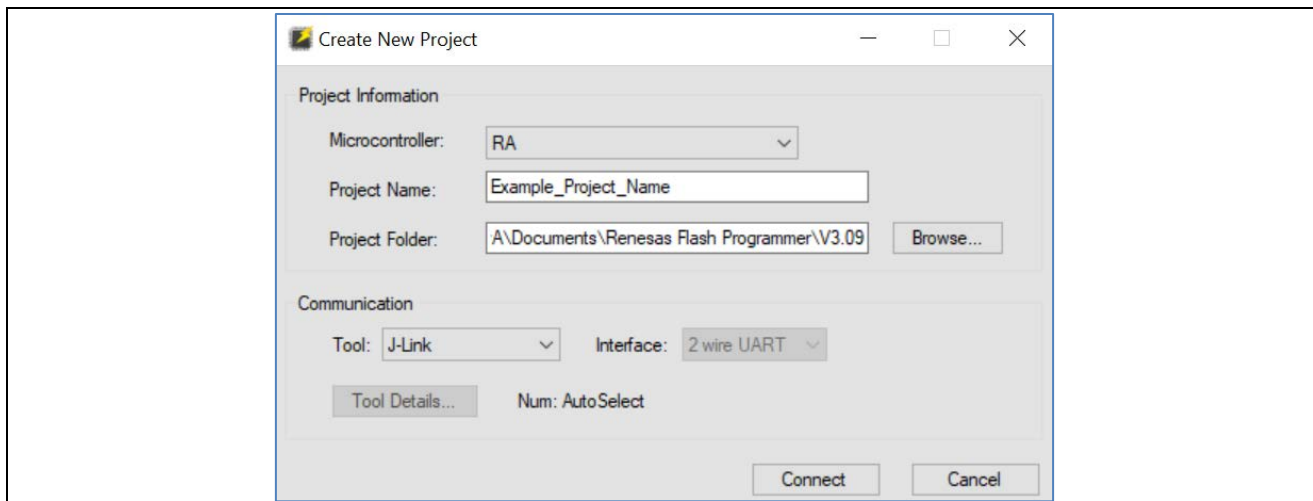
- EK-RA4M2 board
- 2 x Micro USB device cables
- A PC with at least 2 USB ports
- Truphone SIM card
- RYZ014A PMOD board with external antenna.

##### Software Requirements

- Windows® 10 operating system
- Tera Term (or similar) serial terminal console application V4.106
- Renesas Flash Programmer V3.10.00
- RYZ014A PMOD example project Hex File (located in [r20qs0047euxxx-ryz014a-ek-ra4m2.zip](#) > [ryz014a\\_quickstart\\_ek\\_ra4m2/ryz014a\\_quickstart\\_ek\\_ra4m2.srec](#) file).

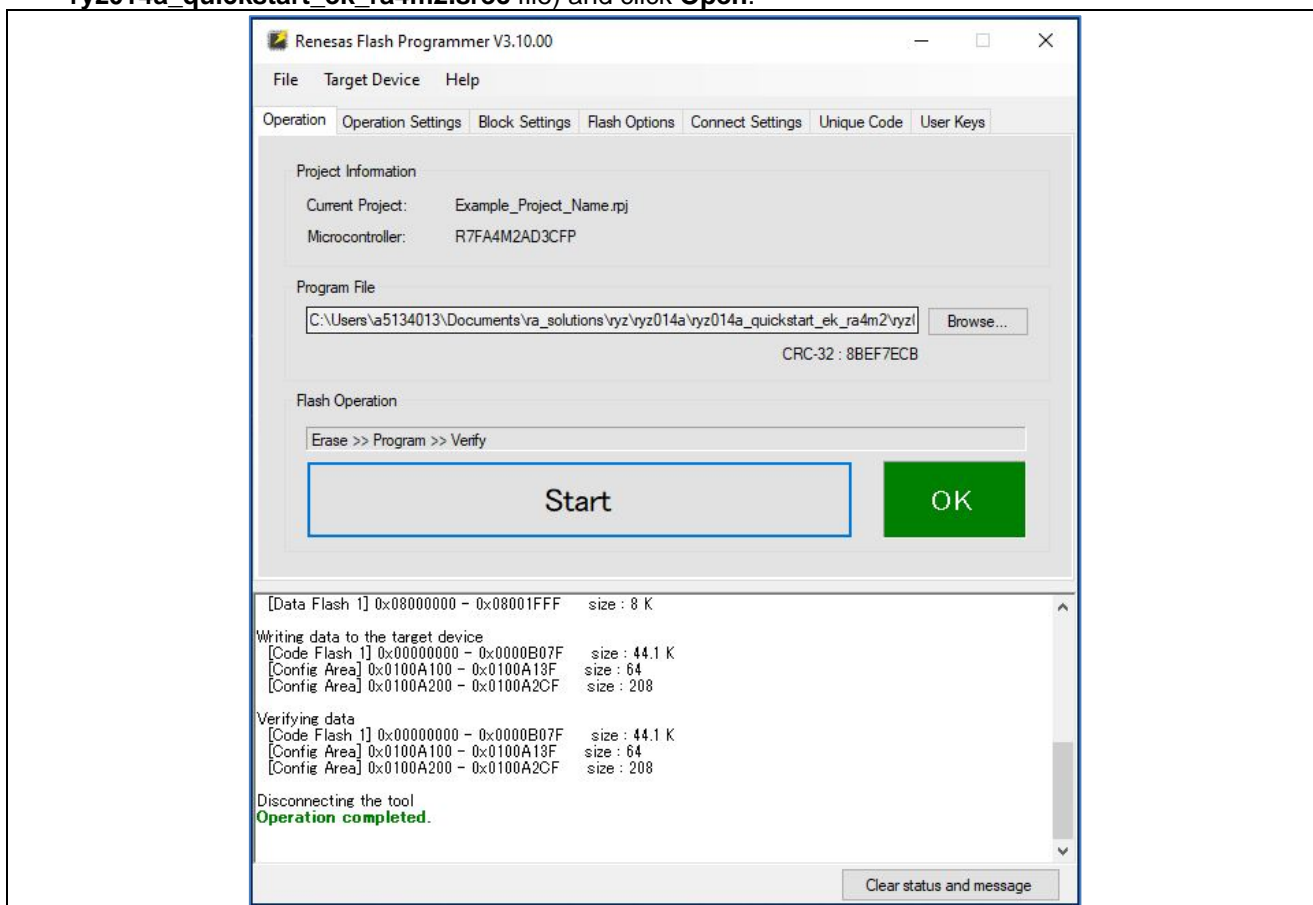
#### 5.1 Flashing the Example Program on the EK-RA4M2 Board

1. Connect the micro USB end of the micro USB device cable to the micro-AB DEBUG1 port (J10) of the EK-RA4M2 board.
2. Open Renesas Flash Programmer and create a new project by using the **File** menu and selecting **New Project**.
3. In the **Create a New Project** window (Figure 2), select the **RA** family from the Microcontroller drop-down menu. Next, enter a desired project name and select **J-link** for the communication tool. Click **Connect**.



**Figure 2. Creating a New Project on Renesas Flash Programmer**

4. An authentication window may appear. If it does, then enable **Auto Authentication** and click **OK**.
5. Verify that the message **Operation completed** is printed in the main window after clicking **Connect**. Under Program file, click **Browse** to choose the program file that will be flashed onto the board (Figure 3). Using the file explorer window, navigate to the example project’s **Hex File** (located in **r20qs0047euxxx-ryz014a-ek-ra4m2.zip > ryz014a\_quickstart\_ek\_ra4m2/ryz014a\_quickstart\_ek\_ra4m2.sec** file) and click **Open**.



**Figure 3. Main Window of Renesas Flash Programmer After Creating a New Project**

6. Click **Start** to begin flashing the example project code onto the board. Once completed, the message **Operation completed** should be printed and the status **OK** should be displayed.
7. Disconnect the micro USB device cable from the DEBUG1 port (J10) of the EK-RA4M2 board.



## 5.2 Connecting and Powering Up the EK-RA4M2 Board

1. Check that J12 is set to link pins 2-3 and that J15 link is closed.
2. Connect one of the micro USB cables to RYZ014A (connector CN4) for external powering of PMOD and the other end of cable to a PC USB port.
3. Connect the second micro USB end of the micro USB device cable to the micro-AB USB Full Speed port (J11) of the EK-RA4M2 board.
4. Connect the other end of this cable to the USB port of the host PC. Power LED (LED4) on the EK-RA4M2 board lights up white, indicating that the EK-RA4M2 board is powered on.

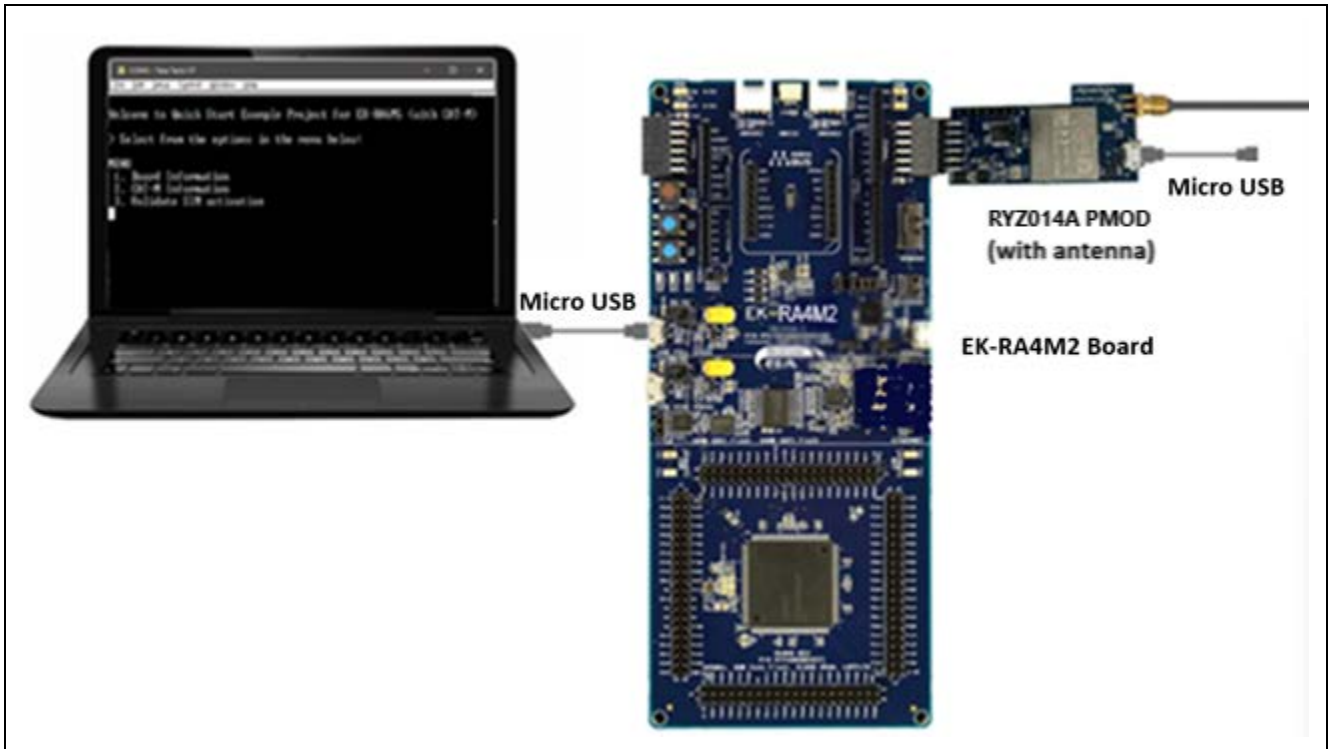


Figure 4. Connecting the EK-RA4M2 Board to the Host PC via USB Full Speed Port

## 5.3 Running the RYZ014A PMOD Example Project

To run the RYZ014A PMOD example project, use the following instructions:

1. On the host PC, open Windows Device Manager. Expand **Ports (COM & LPT)**, locate **USB Serial Device (COMxx)** and note the COM port number for reference in the next step.

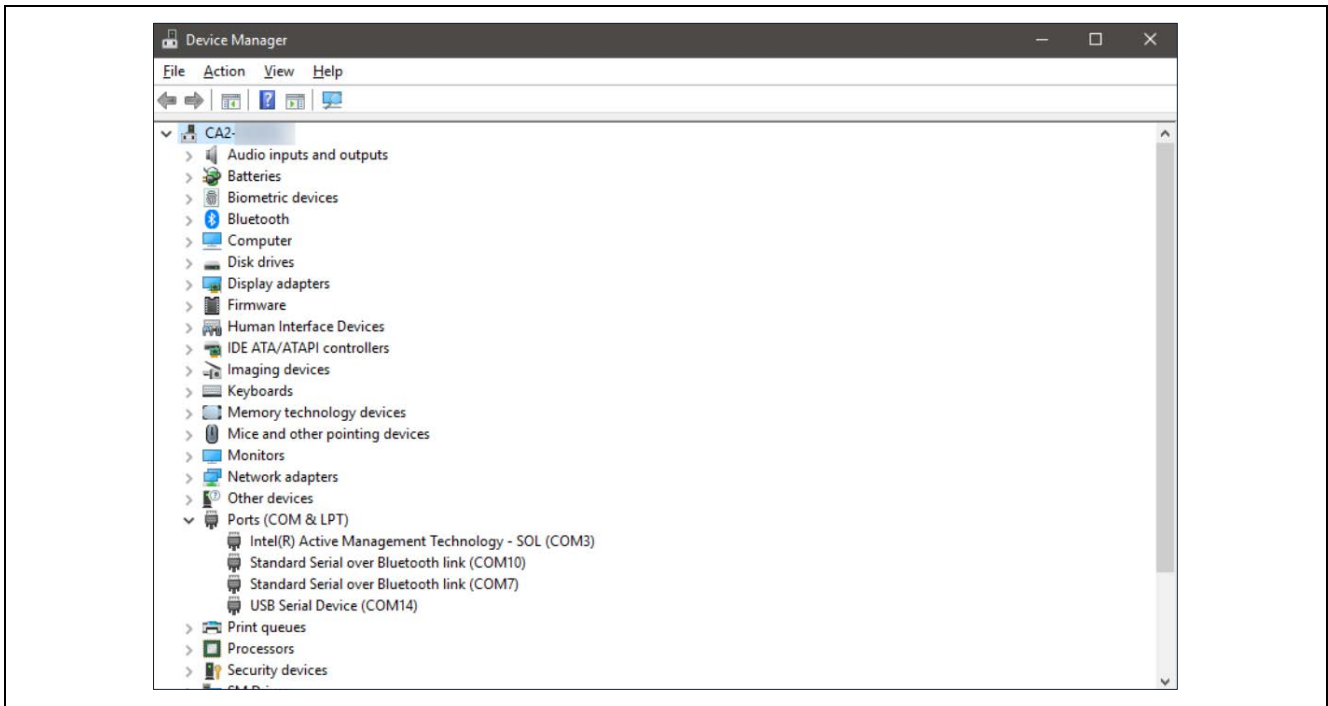


Figure 5. USB Serial Device in Windows Device Manager

2. Open Tera Term, select **Serial** and **COMxx: USB Serial Device (COMxx)** and click **OK**.

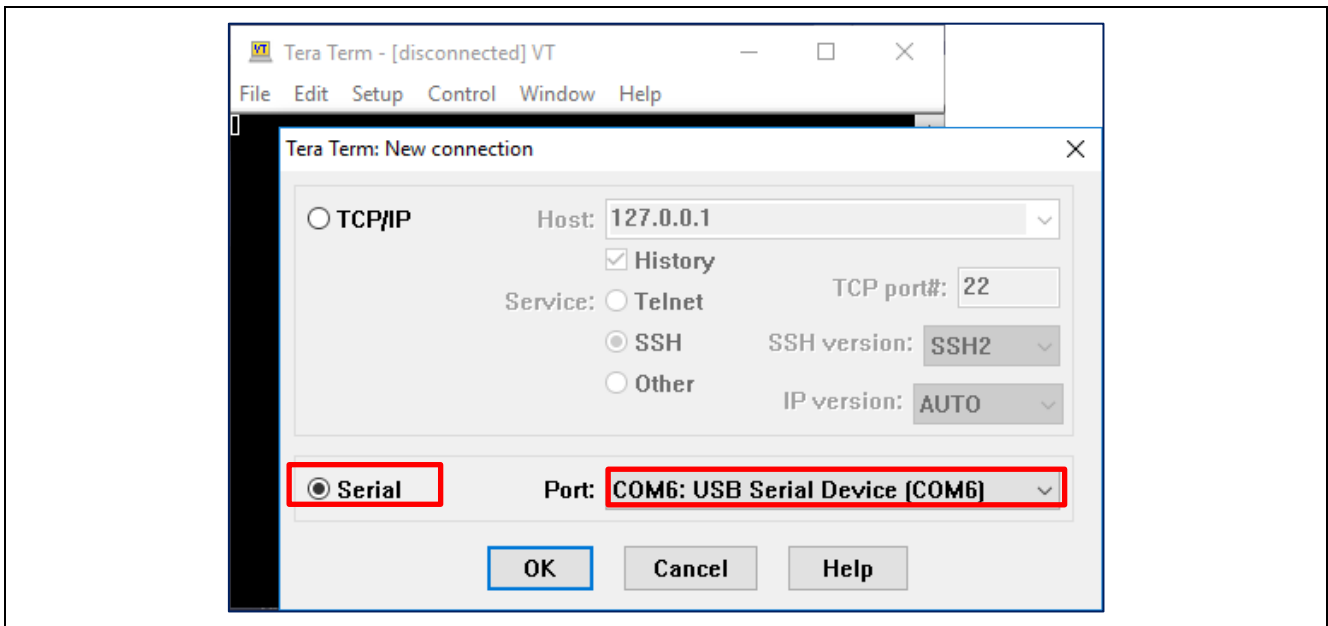


Figure 6. Selecting the Serial Port on Tera Term

- Using the **Setup** menu pull-down, select **Serial port...** and ensure that the speed is set to **115200**, as shown in Figure 7.

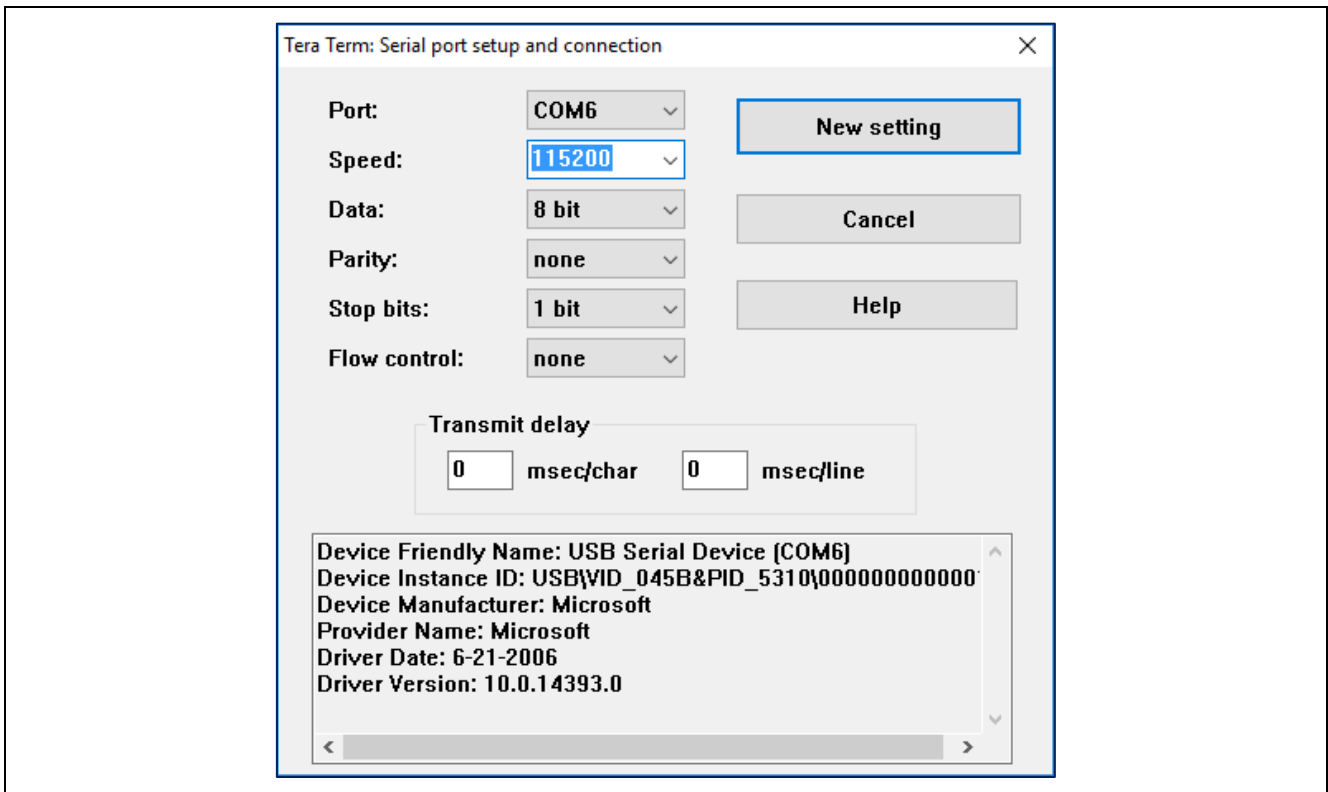


Figure 7. Selecting 115200 on the Speed Pulldown

- Complete the connection. The 'Welcome and Main Menu' screen will be displayed as shown in Figure 8.

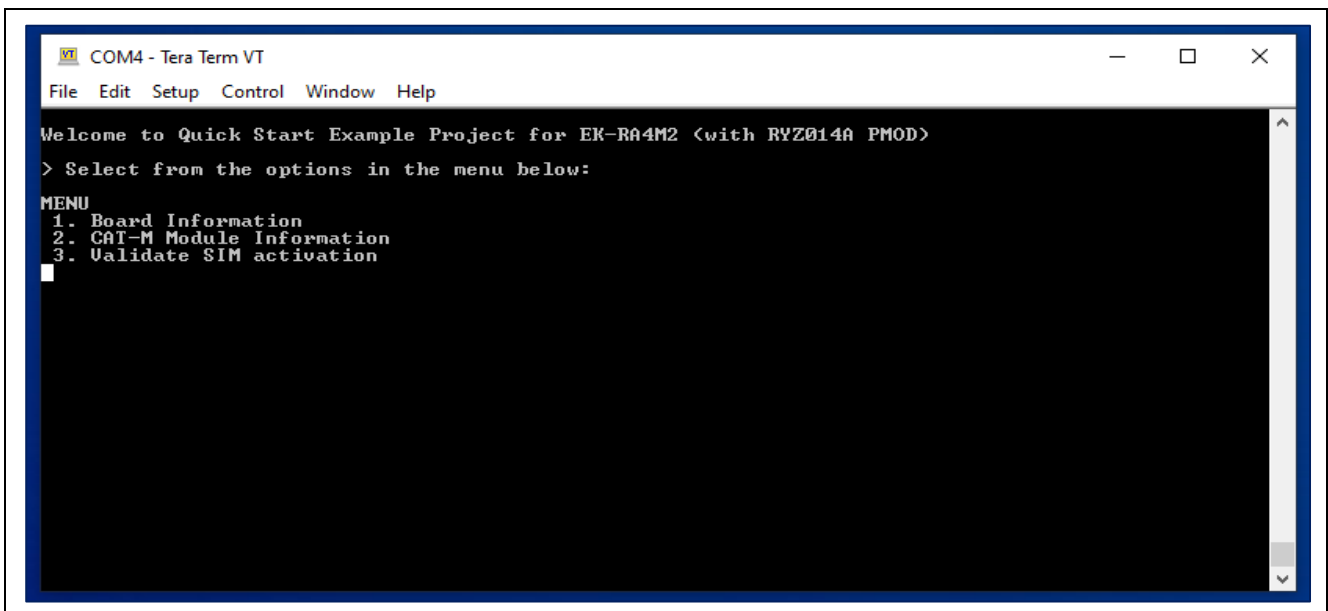
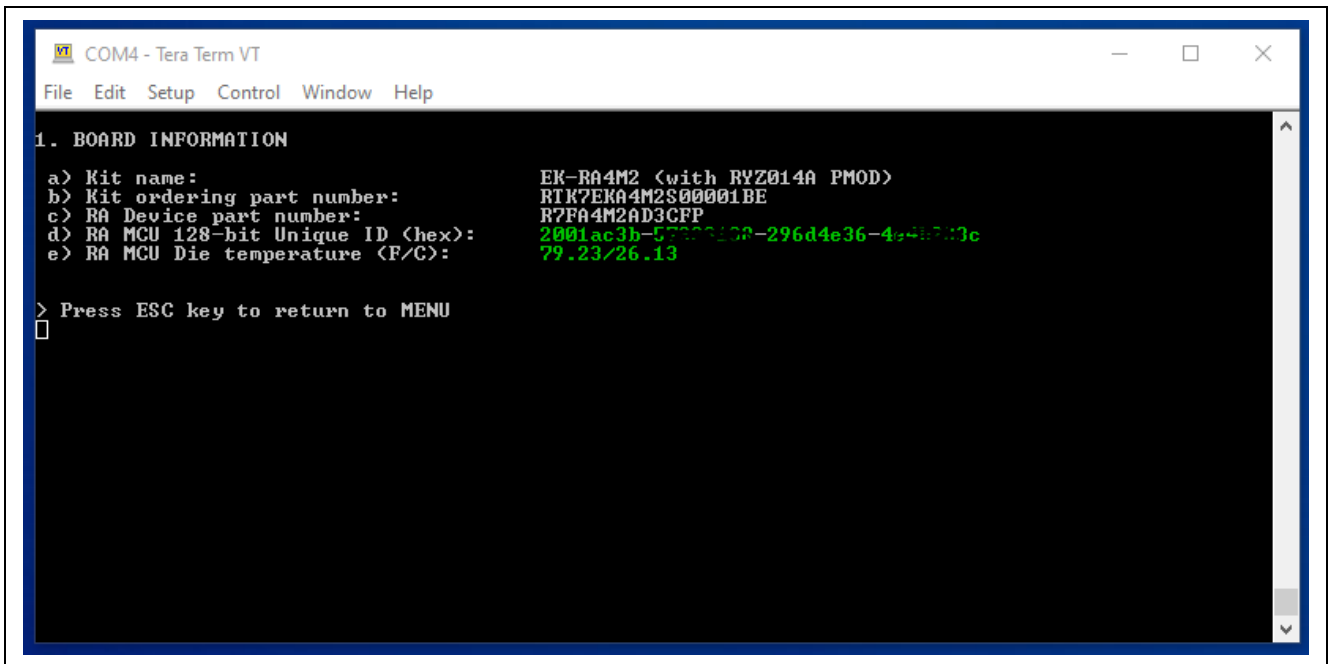


Figure 8. Welcome and Main Menu

- Press **1** to display the **Board Information** including the kit name, part number, MCU ID, MCU die temperature.



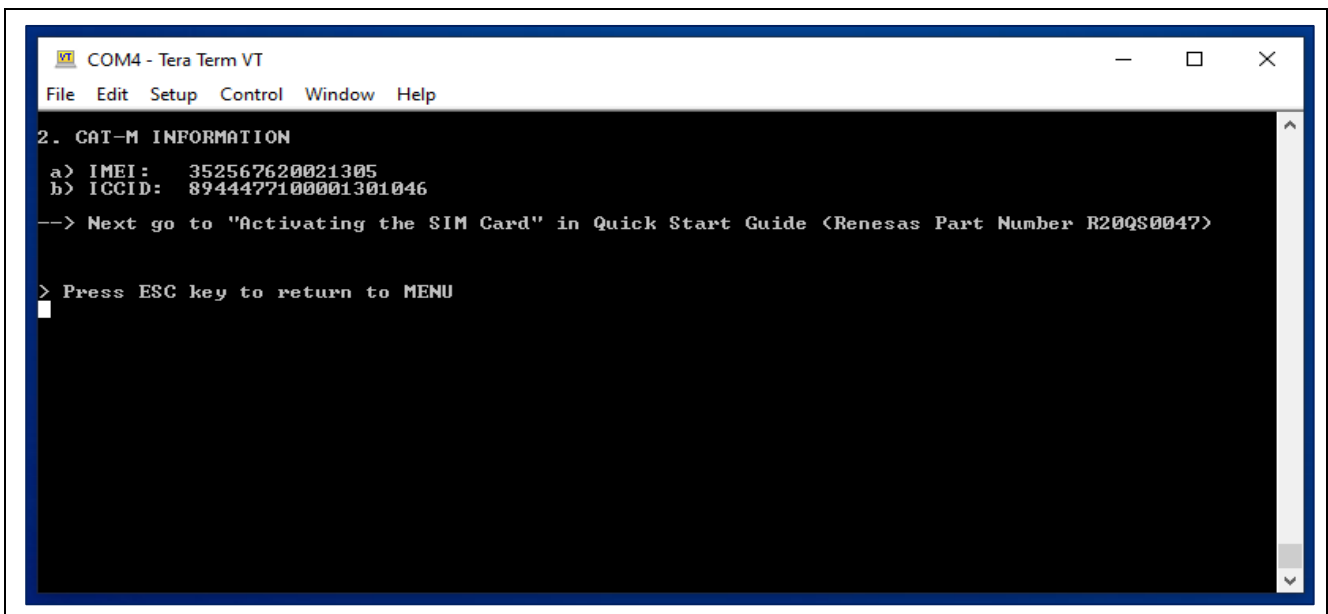
```
COM4 - Tera Term VT
File Edit Setup Control Window Help

1. BOARD INFORMATION
a) Kit name: EK-RA4M2 (with RYZ014A PMOD)
b) Kit ordering part number: R1K7EK04M2S00001BE
c) RA Device part number: R7FA4M2AD3CFP
d) RA MCU 128-bit Unique ID (hex): 2001ac3b-5722100-296d4e36-4e4e713c
e) RA MCU Die temperature (F/C): 79.23/26.13

> Press ESC key to return to MENU
█
```

Figure 9. Board Information

- Press **ESC** to return to the 'Welcome and Main Menu' screen.
- Press **2** to display **CAT-M Information**. This menu will communicate with the RYZ014A PMOD module to obtain the ICCID value needed for activating the SIM card. Upon success, the IMEI and ICCID values will be displayed on the terminal screen. The program will continue to attempt to communicate with the RYZ014A PMOD module until it has successfully connected or timed out. After obtaining the ICCID value, go to Truphone [truphone.com/connectit](http://truphone.com/connectit) to activate the SIM card (see section **Activating the SIM card**).



```
COM4 - Tera Term VT
File Edit Setup Control Window Help

2. CAT-M INFORMATION
a) IMEI: 352567620021305
b) ICCID: 8944477100001301046

--> Next go to "Activating the SIM Card" in Quick Start Guide (Renesas Part Number R20QS0047)

> Press ESC key to return to MENU
█
```

Figure 10. RYZ014A PMOD Information

8. Press **ESC** to return to the ‘Welcome and Main Menu’ screen.

Press **3** to enter the **Validate SIM activation** screen. The program will attempt to ping the Quad9 server (IP address 9.9.9.9) for a response to determine whether the SIM card has been activated with access to the LTE Network. Upon success, the text “\*\* SIM card active! \*\*” will be displayed on the terminal screen. If the PING response returns a time out condition “+PING: 1,9.9.9.9,-1,-1”, keep in mind it can take up to 15 minutes for the card to be activated after performing **Activating the SIM Card** to obtain LTE Network access. In this case, wait 15 minutes and repeat step 8. If SIM card validation continues to fail, follow the **Troubleshooting** section.

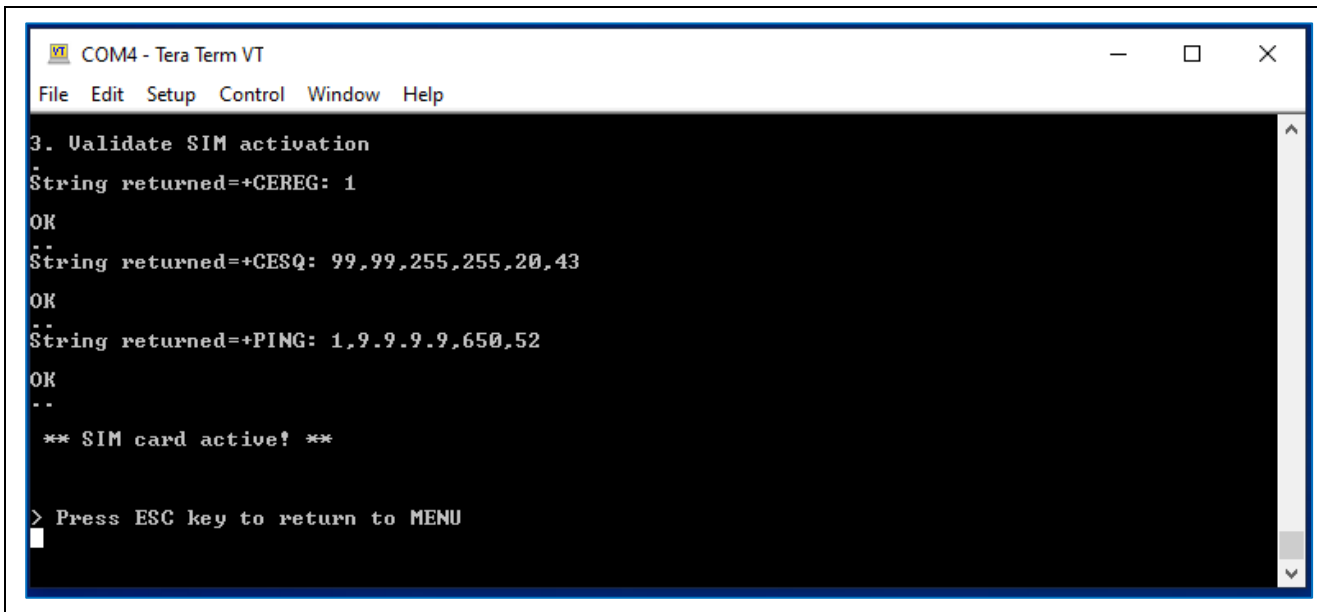


Figure 11. Validating SIM Activation – SIM Card Active

9. Press **ESC** to return to the ‘Welcome and Main Menu’ screen.

### 6. Activating the SIM Card

To activate the included SIM card, please visit the Truphone SIM Activation platform at [truphone.com/connectit](http://truphone.com/connectit) and use the following steps:

1. On the **Business** page, click **Start activation** button under **IoT SIM Activation**.

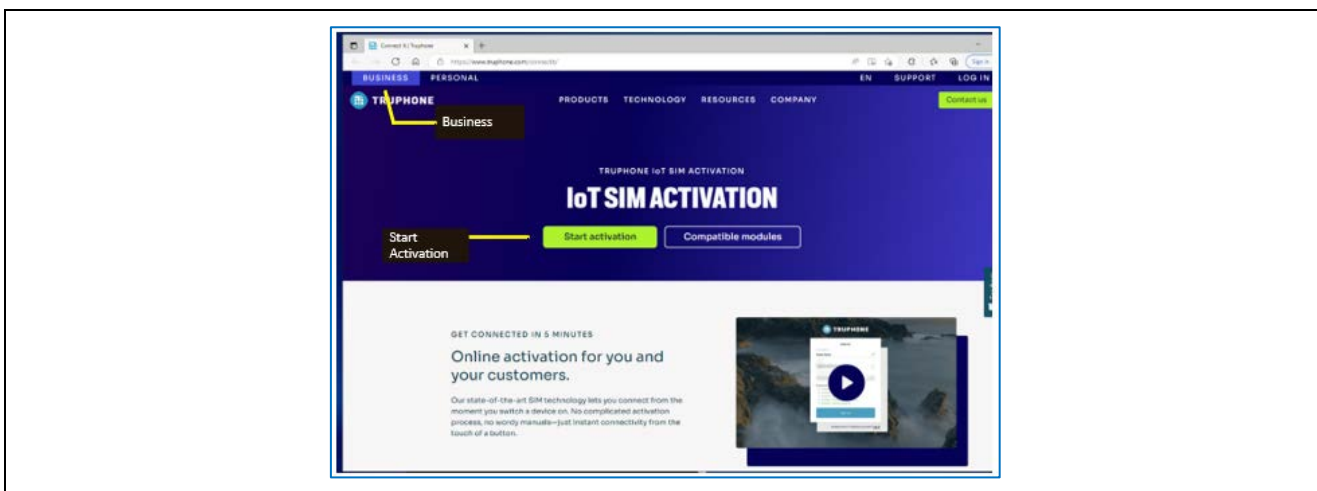


Figure 12. Activating the SIM Card

2. Create a new Truphone Account by selecting **Sign up** (next to **Don't have an account yet?**) and Fill-in your Full name, Email, and a Password. Then click **Sign up** to create a new account.
3. Select **Personal** as the account type.

4. Select **Get Started**.
5. Verify your email by entering the activation code sent to your email account.
6. Complete the **Profile information** form – then select **Create account**.
7. Select **Activate SIMS** to activate your individual SIM by **ICCID** and **PUK** found on the SIM Card packaging.
8. Enter the **ICCID** value obtained from the **Running the RYZ014A PMOD example project** section. See the **ICCID** value in Figure 10, RYZ014A PMOD Information. Fill other fields as needed.
9. You will receive email confirmation when the SIM card activation is complete.
10. Ensure the SIM card is inserted in the RYZ014A PMOD. Follow **Running the RYZ014A PMOD example project** section step 8 by using **Menu 3 Validate SIM activation** to verify that the SIM card is activated. The SIM card should be activated on the Truphone SIM Activation platform after 15 minutes and can be validated on the Tera Term terminal as shown in Figure 11. The time for the SIM card to be activated by Truphone can vary depending on their system demand. In most cases, if PING Response fails, wait a few more minutes and repeat **Menu 3 Validate SIM activation**.

#### Disclaimer

The activation steps above are provided by SIM Provider Truphone. They are the most current at the time of publishing this application note. If you need help activating your SIM Card, contact Truphone support [iot.truphone.com](http://iot.truphone.com) or [Contact Support | Truphone](#).

If you have a SIM card from any other provider then contact the technical support for that provider.

For any other issue that cannot be resolved please Contact Renesas Support at [Technical Support](#).

Note: The SIM card provider for the Quick Start Guide example project is Truphone. If you use any other SIM card provider, you must change the Access Point Name required for the SIM card provider in your global region. Failure to do so could result in the RYZ014A not connecting to the Cellular network.

To set the Access Point Name (APN) for SIM Card provider other than Truphone see `#define CELLULAR_CFG_AP_NAME` in project file `/src/uart_CATM.h`

```
// the default Access Point Name
#define TRUPHONE_SIM_APN // Truphone uses APN = iot.truphone.com
```

## 7. Troubleshooting

This section includes a common set of issues and how to resolve them. The two types of issues that you may encounter are due to the hardware setup or SIM activation. The steps that follow will help to resolve those types of issues. For any other issue that cannot be resolved please contact Renesas support at [Technical Support](#).

### 7.1 Hardware Setup

The first step for any general issue is to verify that the proper connections are made. For example, Executing Menu 2 **CAT-M Information** results in `** RYZ014A init FAILED **`. Refer to Figure 4.

- The RYZ014A PMOD board is plugged into PMOD2 port (J25).
- The RYZ014A PMOD antenna cable is plugged into connector (CN3) RYZ014A PMOD board.
- A micro USB cable is plugged into the USB Full Speed port, connector (J11) and PC.
- The 2<sup>nd</sup> micro USB cable is plugged into the RYZ014A PMOD connector (CN4) and PC.
- Check to see that the SIM card is fully inserted in the SIM slot (on the underside of the RYZ014A PMOD module). Check for proper SIM card orientation in the slot.

### 7.2 Power Problem

- If no LEDs illuminate when the USB cable is connected to the PC, power may not be applied. In that case:
  - Check that J12 is set to link pins 2-3.
  - Check that J15 is linked (pins 1-2).

### 7.3 SIM Card Activation Problem

- If the SIM activation fails, verify that the ICCID number and PUK numbers are correctly entered when activating the SIM Card on Truphone IoT SIM Activation platform [truphone.com/connectit](http://truphone.com/connectit).
- If **Menu 3 Validate SIM activation** PING response returns a Ping Failed condition, it can take up to 15 minutes or longer for the card to be activated after performing **Activating the SIM Card** to obtain LTE Network access. In this case, wait at least 15 minutes (or longer) and repeat **Menu 3 Validate SIM activation**.
- SIM cards cannot be activated more than once. To verify whether the SIM card has already been activated, please monitor and manage your SIMs on the Truphone IoT Connectivity Management Platform or contact Truphone support through [iot.truphone.com](http://iot.truphone.com) by logging into your account.
- If **Menu 3 Validate SIM activation** PING response continues to return Ping Failed condition, first check the external antenna is connected securely to the RYZ014A PMOD and try again. The CESQ Network Signal Quality (RSSI) could be too low to connect. If the RSSI is 255 then check that the external antenna is connected. It is possible that no Cell Network Signal could be detected in your area. An RSSI reading with RSSI = 15 or less indicates marginal or poor reception.

+CESQ: 99,99,255,255,15,40 : in this example, RSSI = 15 which is the 5<sup>th</sup> argument returned.

It may be necessary to move the EK-RA4M2 with PMOD to a different location to improve the Network Signal Quality (RSSI) to get an RSSI value in the range of 16 to 98.

- If **Menu 3 Validate SIM activation** continues to fail, verify that the APN is set for the Global Region where the RYZ014A PMOD is trying to connect. The APN setting and LTE Band List depends on your Global Region and the SIM card provider.

To set the Access Point Name (APN) for SIM Card provider other than Truphone

The APN is set in the example project in `/src/uart_CATM.h`

see `#define CELLULAR_CFG_AP_NAME`

```
// the default Access Point Name
```

```
#define TRUPHONE_SIM_APN // Truphone uses APN = iot.truphone.com
```

- For all other SIM card issues that cannot be resolved with these troubleshooting steps, contact Truphone support through [iot.truphone.com](http://iot.truphone.com) by logging into your account.

### 7.4 Illegible/No Terminal Output (Tera Term)

This could be caused by the setup of the serial terminal connection. To fix this, use the following instructions:

- Please make sure the following settings in the setup of the serial connection are set as follows:
  - Speed: 115200
  - Data: 8 bit
  - Parity: None
  - Stop bits: 1 bit
  - Flow Control: None

### 7.5 Unable to Read RYZ014A Board Information

If there is a failure to read the RYZ014A PMOD board and SIM information (IMEI and ICCID), check to confirm the following:

- SIM card is fully inserted in the SIM card slot on the underside of the RYZ014A PMOD board.
- RYZ014A PMOD board is plugged into the PMOD2 port (J25) of the EK-RA4M2 board.
- A micro USB cable is plugged into the USB Full Speed port, connector (J11) and PC
- A micro USB cable is plugged into the RYZ014A PMOD connector (CN4) and PC.

### 7.6 Contact Renesas Support

For Evaluation Kit and RYZ014A PMOD related issues that cannot be resolved with these troubleshooting steps, please contact Renesas Support at [renesas.com/support](http://renesas.com/support) for more help.

## 8. Next Steps

This section provides overview instructions on how to modify the Quick Start example project. The project can be modified by editing the source code and reconfiguring the device selection, properties of the MCU peripherals, pins, clocks, interrupts, and so forth.

Note: The specific modifications that can be performed to the Quick Start example project are not covered in this QSG.

1. Once the Quick Start example project is imported, double-click the **configuration.xml** file to open the FSP configuration. The configuration provides an easy-to-use interface to configure the properties of the MCU and peripherals.

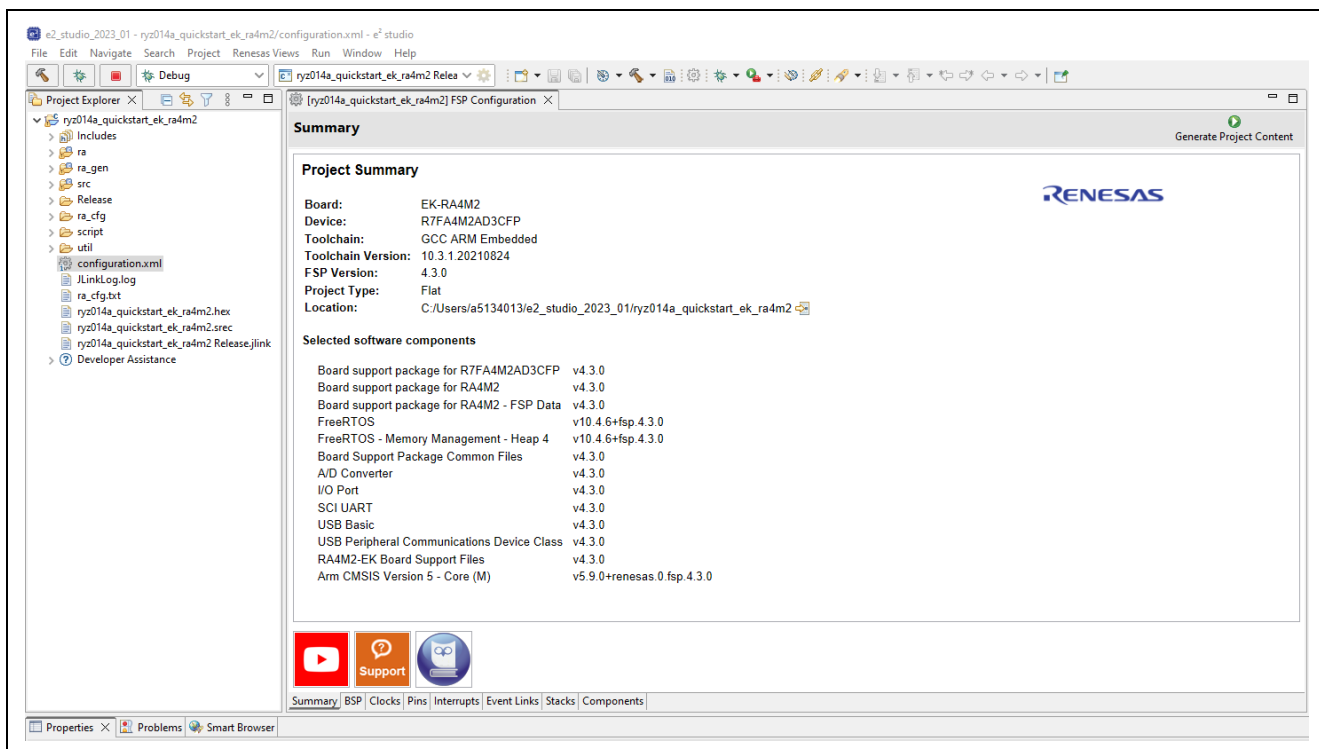


Figure 13. Opening the FSP Configuration

2. For example, in the **BSP** tab of the configuration, the user can use to modify the Board Selection. Figure 14 illustrates modifying the **Board** selection.
3. After changing the Board or Device selection, it may be required to modify the Pin assignments in order to use the same project peripherals, LEDs, and other resources with the new Board. The Pin assignments can be changed on the **Pins** tab of the FSP configuration. Figure 14 illustrates modifying the Pin configuration.



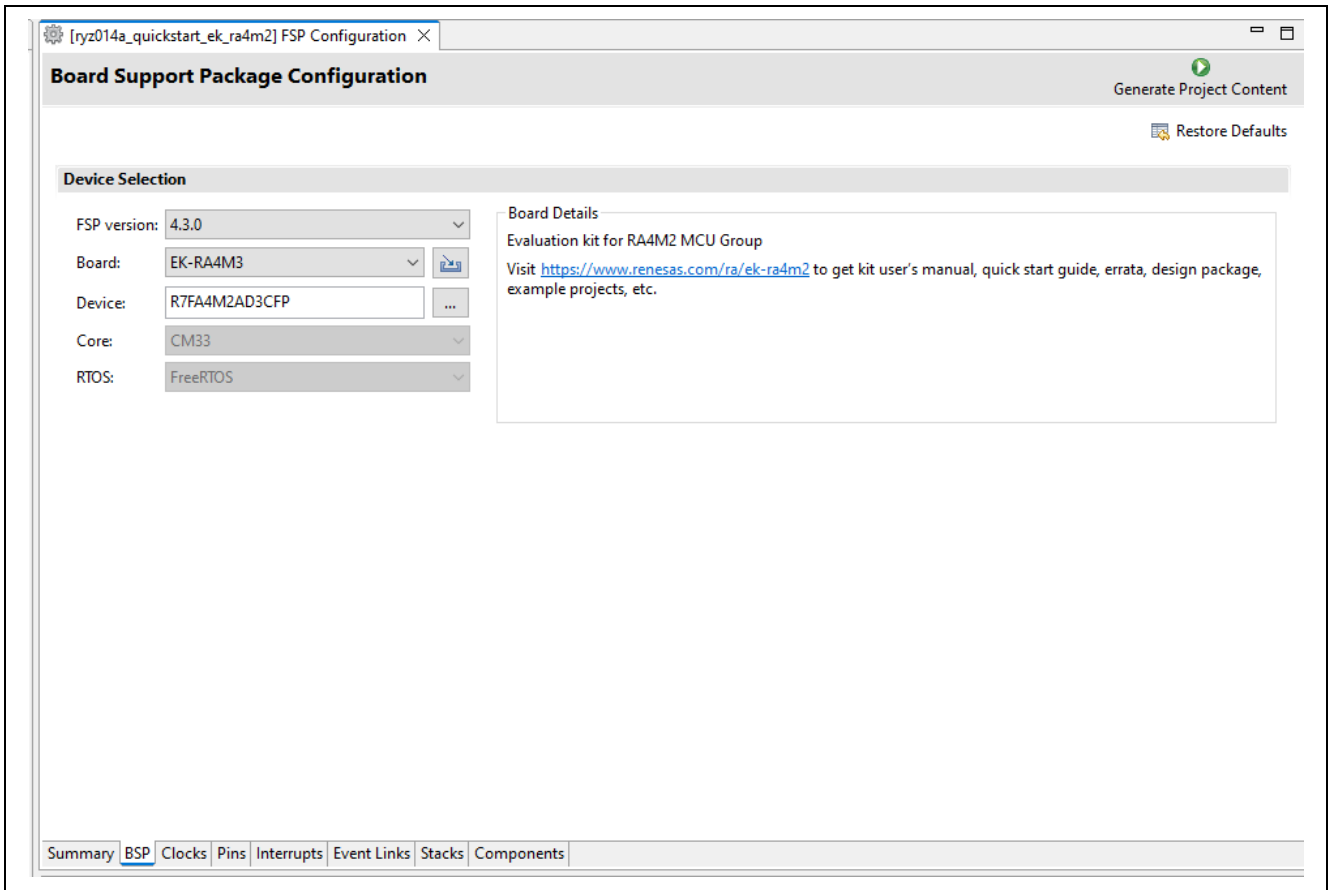


Figure 14. Modifying the Board Selection

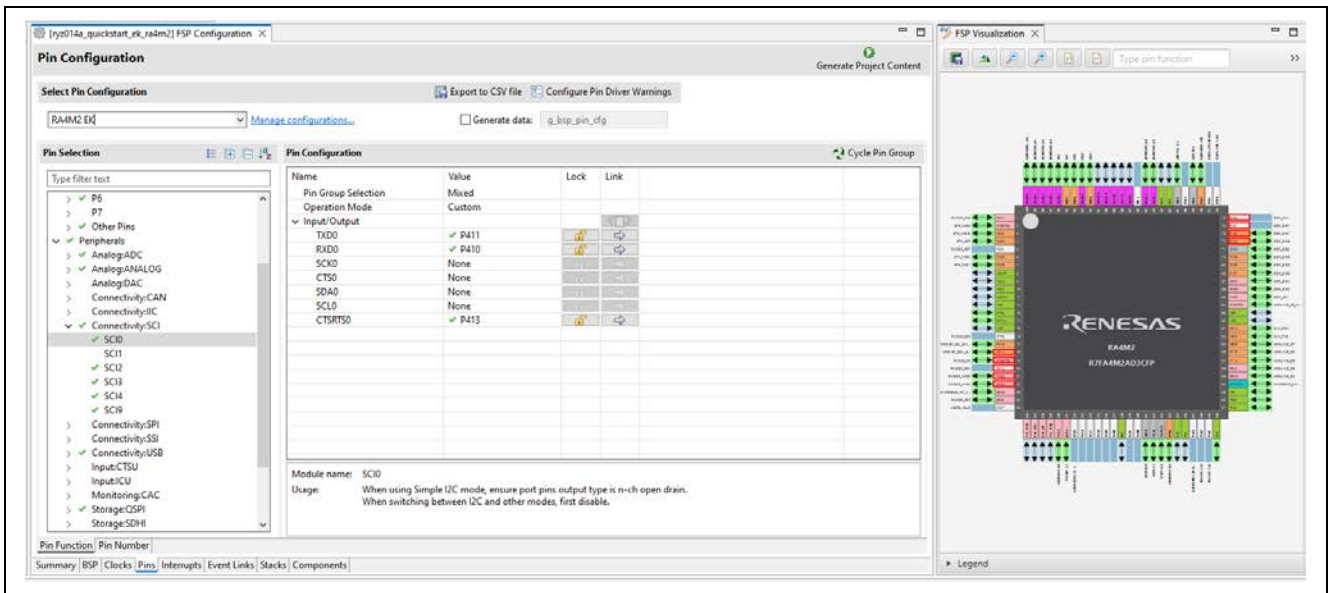
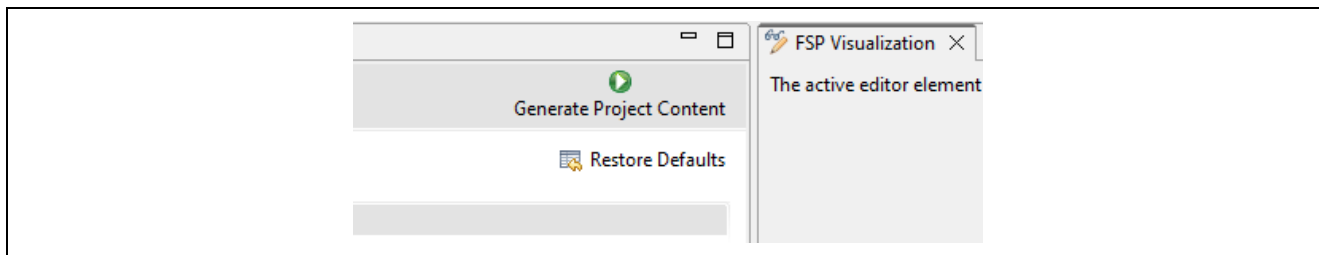


Figure 15. Modifying the Pin Configuration

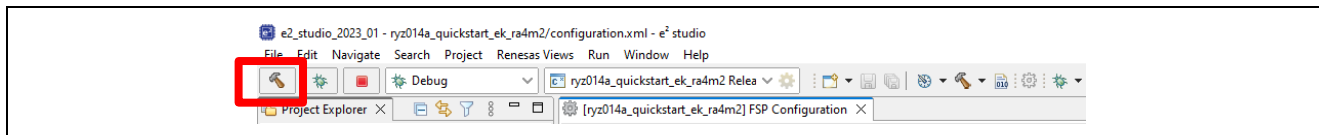
4. After the desired modifications are made, click **Generate Project Content**.



**Figure 16. Generate Project Content from FSP Configuration**

5. Modify the source files in the **/src** folder as needed and then save the changes.

6. Build the project by clicking the build icon.



**Figure 17. Building the Project**

For additional information on porting example projects to other RA MCUs, see Chapter **Starting Development : e2 studio User Guide -> Configuring a Project** in the **Renesas Flexible Software Package (FSP) User's Manual (R11UM0155EU)**.

- RYZ014A PMOD Module  
[renesas.com/RTKYZ014A0B00000BE](https://renesas.com/RTKYZ014A0B00000BE)
- RYZ014A  
[renesas.com/RYZ014A](https://renesas.com/RYZ014A)
- RA4M2  
[RA4M2 100MHz Arm Cortex M33 TrustZone](https://renesas.com/RA4M2_100MHz_Arm_Cortex_M33_TrustZone)
- To learn how to create a new e<sup>2</sup> studio project from scratch, refer to *Chapter 2 Starting Development* in the FSP User Manual ([renesas.com/ra/fsp](https://renesas.com/ra/fsp)). To learn how to use e<sup>2</sup> studio, refer to the User Manual provided on the e<sup>2</sup> studio webpage ([renesas.com/software-tool/e-studio](https://renesas.com/software-tool/e-studio)).

## 9. Website and Support

Visit the following URLs to learn about the kit and the RA family of microcontrollers, download tools and documentation, and get support.

EK-RA4M2 Resources	<a href="https://renesas.com/ra/ek-ra4m2">renesas.com/ra/ek-ra4m2</a>
RA Kit Information	<a href="https://renesas.com/ra/kits">renesas.com/ra/kits</a>
RA Product Information	<a href="https://renesas.com/ra">renesas.com/ra</a>
RA Product Support Forum	<a href="https://community.renesas.com/mcu-mpu/ra/">community.renesas.com/mcu-mpu/ra/</a>
RA Videos	<a href="https://renesas.com/ra/videos">renesas.com/ra/videos</a>
RA Kit Feedback and Feature Request	<a href="https://renesas.com/ra/kitfeedback">renesas.com/ra/kitfeedback</a>
Renesas Support	<a href="https://renesas.com/support">renesas.com/support</a>

## Revision History

Rev.	Date	Description	
		Page	Summary
1.00	Apr.27.23	—	Initial release

### Provide Feedback/ Request a Feature

Renesas aims to provide the best microcontroller kit experience to help jumpstart customer innovation with RA family of microcontrollers and take products to market faster. The Renesas RA microcontroller kits have been designed with a lot of attention-to-detail and customer-centric thinking at every aspect of design. Renesas aims to exceed customer expectations.

Renesas looks forward to hearing your feedback and knowing how we can enhance your experience. Please share your feedback at [renesas.com/ra/kitfeedback](https://renesas.com/ra/kitfeedback).

---

RYZ014A PMOD with EK-RA4M2 – Quick Start Guide

Publication Date: Apr.27.23

Published by: Renesas Electronics Corporation

---

# RYZ014A PMOD with EK-RA4M2 – Quick Start Guide