

Renesas RA Family

Quick Start Guide: EK-RA6M3 Modbus TCP

Introduction

This document is a quick start guide for evaluating Modbus communication with the RA microcomputer evaluation board.

Modbus protocol is a communication protocol developed by Modicon Inc. (Schneider Electric SA.) for programmable logic controllers (PLCs), and its specifications are open to the public.

For details, refer to the protocol specifications (PI-MBUS-300 Rev.J).

Target Device

EK-RA6M3

Contents

1. Overview	2
1.1 Abbreviations/Definitions	2
1.2 Reference	2
2. Features	2
3. Structure of the sample application	3
3.1 FSP Drivers	3
3.2 Modbus protocol stack	3
3.3 ModbusDemoApplication.exe	3
4. Operating Environment	4
5. Board setting and connection	4
6. Execution of Modbus sample program	5
7. Modbus communication demo with evaluation tool	7
7.1 IP address setting	7
7.2 Setting of Modbus Demo Application	8
7.2.1 Specification of demonstration	9
8. Appendix	10
8.1 Appendix A : DHCP Mode	10
8.2 Appendix B : User-defined function	11
8.2.1 Register callback function	11
8.2.2 Register function code	11
8.2.3 User-Defined Functions	11
Revision History	13

1. Overview

This document is for the Modbus protocol stack that operates on the EK-RA6M3 evaluation board, and describes the function overview, application programming interface (API), and application samples for developing and implementing applications using the protocol stack.

This package supports the Ethernet-based Modbus TCP protocol.

This Quick Start Guide provides:

- Instructions for running the Quick Start example project.
- Instructions for importing, modifying, and building the Quick Start example project using Flexible Software Package (FSP) and e² studio Integrated Development Environment (IDE).
- Instructions for connecting with a master and operating simple demo.

1.1 Abbreviations/Definitions

Table 1. Abbreviations/Definitions

Index	Abbreviations /Definitions	Description
1	IP	Internet Protocol
2	TCP	Transmission Control Protocol
3	USB	Universal Serial Bus
4	PC	Personal Computer
5	SW	Switch
6	EWARM	Embedded Workbench® for ARM
7	LED	Light Emitting Diode
8	TCP	Transmission Control Protocol
9	Wireshark	Free packet capture tool to check packets flowing on LAN

1.2 Reference

Technical information about Modbus is available through Modbus organization site, and information about EK-RA6M3 is available through Renesas.

Table 2. Technical Inputs

Index	Technical Inputs
1	r01ds0358ej0120-ra6m3.pdf
2	r01uh0886jj0110-ra6m3.pdf
3	REN_r20ut4623ju0100-ek-ra6m3-v1-um_MAT_20191008.pdf
4	r20qs0011eu0103-ek-ra6m3-qsg.pdf
5	Modicon Modbus Protocol Reference Guide Rev.J
6	Modbus Application Protocol Specification V1.1b3

2. Features

Modbus protocol stack for EK-RA6M3 allows for quick and easy development of the Modbus TCP applications.

Modbus function code supported by the initialization API is also specified. The following nine function codes can be implemented in this stack.

- 1(0x01) – Read coils
- 2(0x02) – Read discrete input
- 3(0x03) – Read holding registers
- 4(0x04) – Read input registers
- 5(0x05) – Write single coil
- 6(0x06) – Write single register

- 15(0x0F) – Write multiple coils
- 16(0x10) – Write multiple registers
- 23(0x17) – Read/Write multiple registers

For more information about Modbus, refer to the following site:

<http://www.modbus.org>

Note: The version number may differ depending on the update. Refer to the latest manual.

3. Structure of the Sample Application

This sample application consists of three blocks:

- FSP driver including FreeRTOS+TCP.
- Modbus protocol stack sample program using RTOS and TCP/IP stack.
- Application sample program using Modbus protocol stack.

3.1 FSP Drivers

- `e2studio/ra`

This directory includes the code required for the following Modbus protocol stack:

- BSP (Board support package) for EK-RA6M3
- HAL (Hardware abstraction layer) drivers
- FreeRTOS and FreeRTOS+TCP.

FreeRTOS is an open-source software for real-time operating system (RTOS) for microcontrollers.

Refer to the following link for details.

<https://www.freertos.org/index.html>

<https://aws.amazon.com/freertos/>

- `e2studio/ra_gen`

This directory included the code required for the following Modbus protocol stack:

- HAL (Hardware abstraction layer) drivers

- `e2studio/ra_cfg`

This directory included the code required for the following Modbus protocol stack

These codes setting FreeRTOS configuration and BSP configuration.

- BSP (Board support package) for EK-RA6M3
- FreeRTOS and FreeRTOS+TCP.

3.2 Modbus Protocol Stack

- `e2studio/Modbus`

- Modbus protocol stack and TCP/IP communication are implemented.
- Codes in this directory will create and delete tasks. User does not need to modify codes.

- `e2studio/Modbus_user`

- Users can register their own implementations of Modbus function codes into Modbus protocol stack.
- Codes in this directory are examples to initialize Modbus protocol stack and register the user's implementation of Modbus function codes by Modbus protocol stack APIs.

3.3 ModbusDemoApplication.exe

This executable file is the TCP demo server for TCP/IP communication. It can be used to run the Modbus protocol stack demonstration.

4. Operating Environment

The sample program covered in this manual runs in the following environment.

Table 3. Operating Environment

Item	Description
Board	EK-RA6M3 v1.0
CPU	Cortex®-M4
Operating frequency	CPU clock (CPUCLK): 120 MHz
Operating voltage	3.3 V
Device requirements	R7FA6M3AH3CFC <ul style="list-style-type: none"> Flash memory Capacity: 2 MB SDRAM Capacity: 640 KB
Integrated development environment	e ² studio 2022-10 or later
MCU software package	FSP (Flexible Software Package) v4.4.0, v4.5.0, v4.6.0
Emulator	J-LINK OB
Communications protocol	Modbus TCP
Master tool	ModbusDemoApplication.exe: Modbus evaluation test program

5. Board Setting and Connection

Connect the PC to the EK-RA6M3 board as shown below.

Power is supplied by connecting a USB micro-B cable to the board.

For Modbus TCP communication, use RJ45 connector and connect to PC with LAN cable.

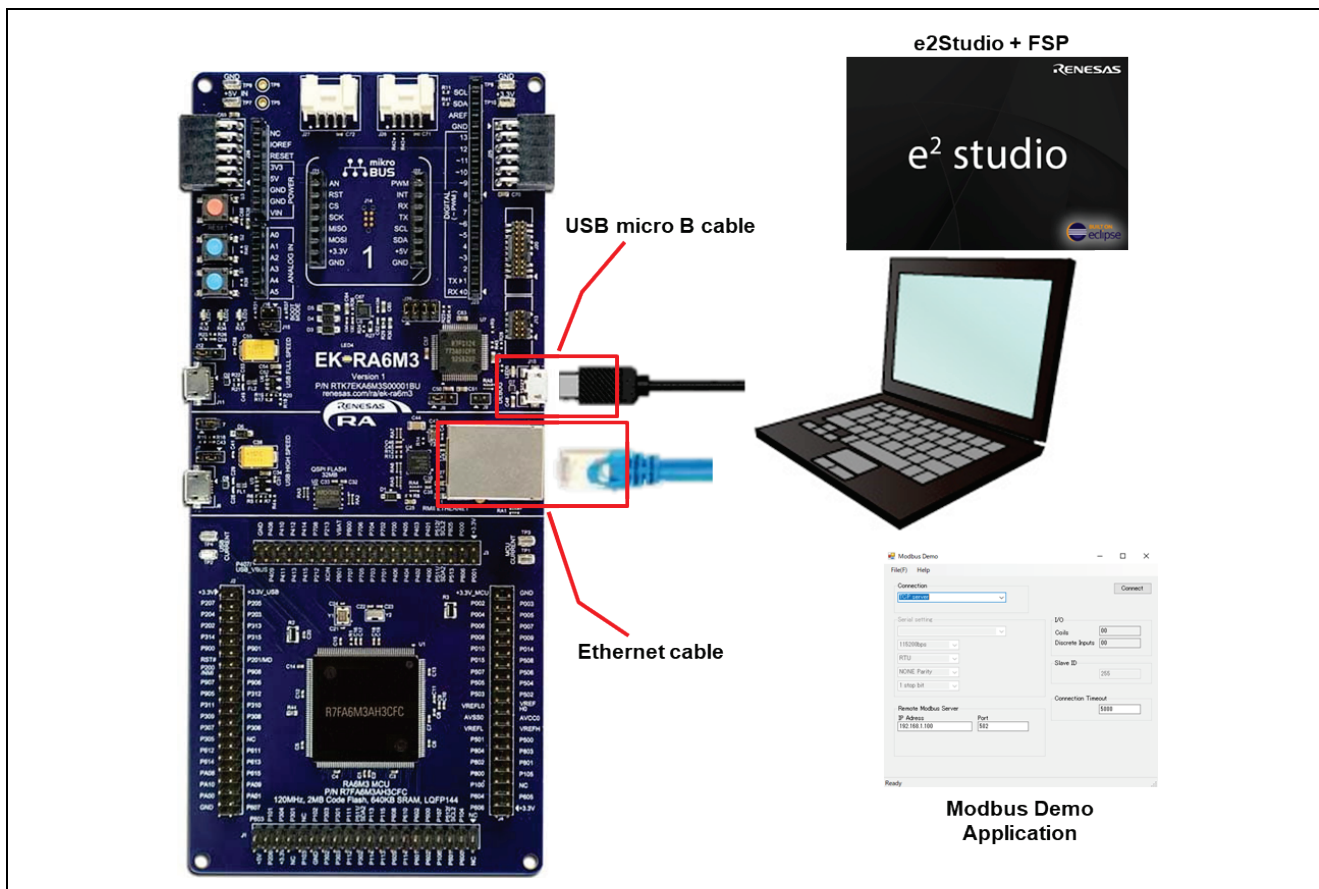


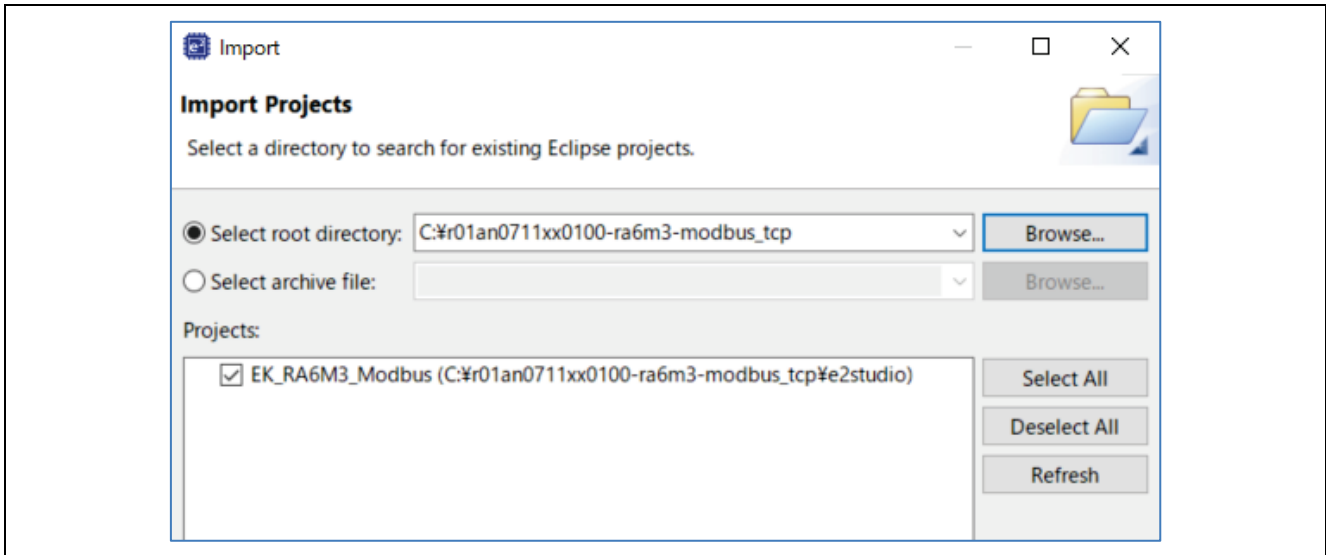
Figure 5. EK-RA6M3 Board Connection Configuration

6. Execution of Modbus Sample Program

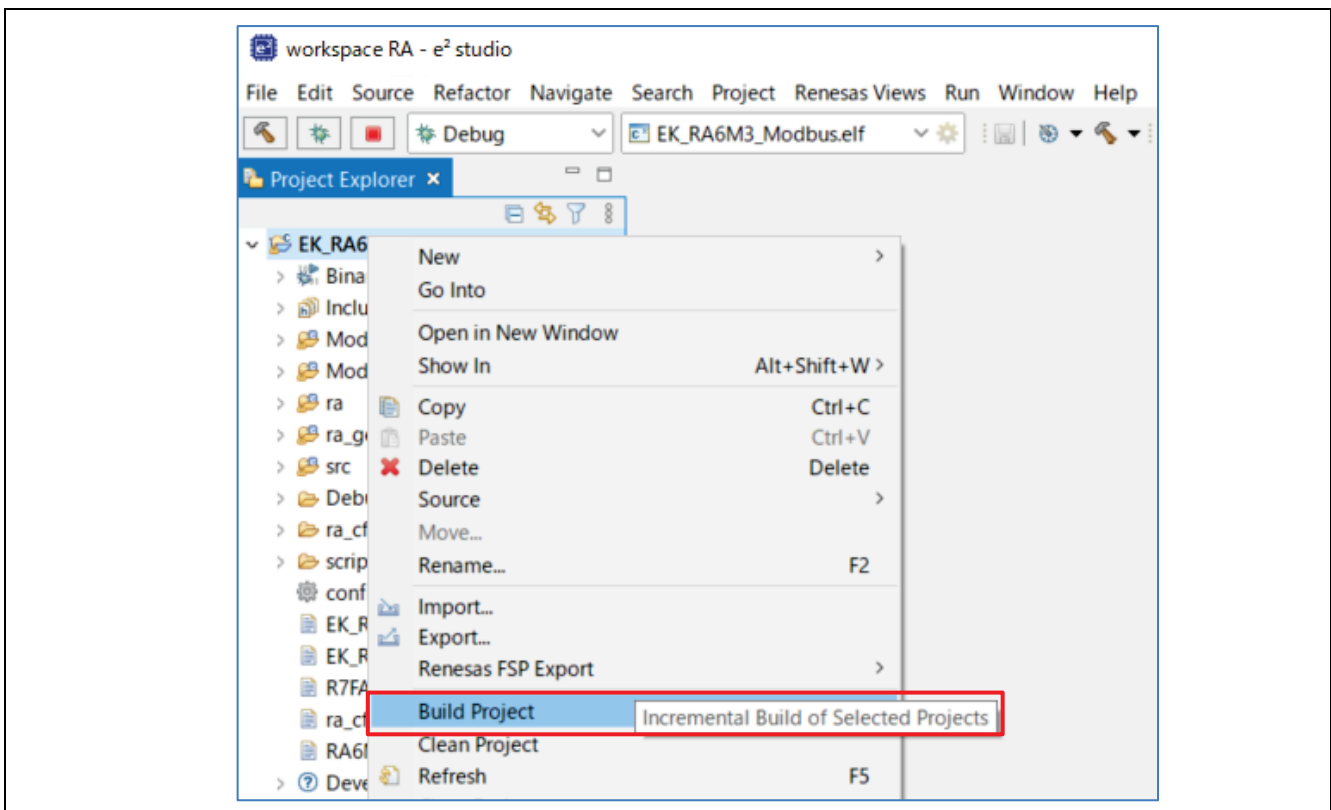
This section describes the instructions for communicating with the Modbus sample application. Refer to section, 4 Operating Environment and section 5, Board Setting and Connection in advance to complete tool installation and hardware connection.

1. Import the sample project after the e² studio is started by selecting **File > Import > Existing Projects into Workspace**.

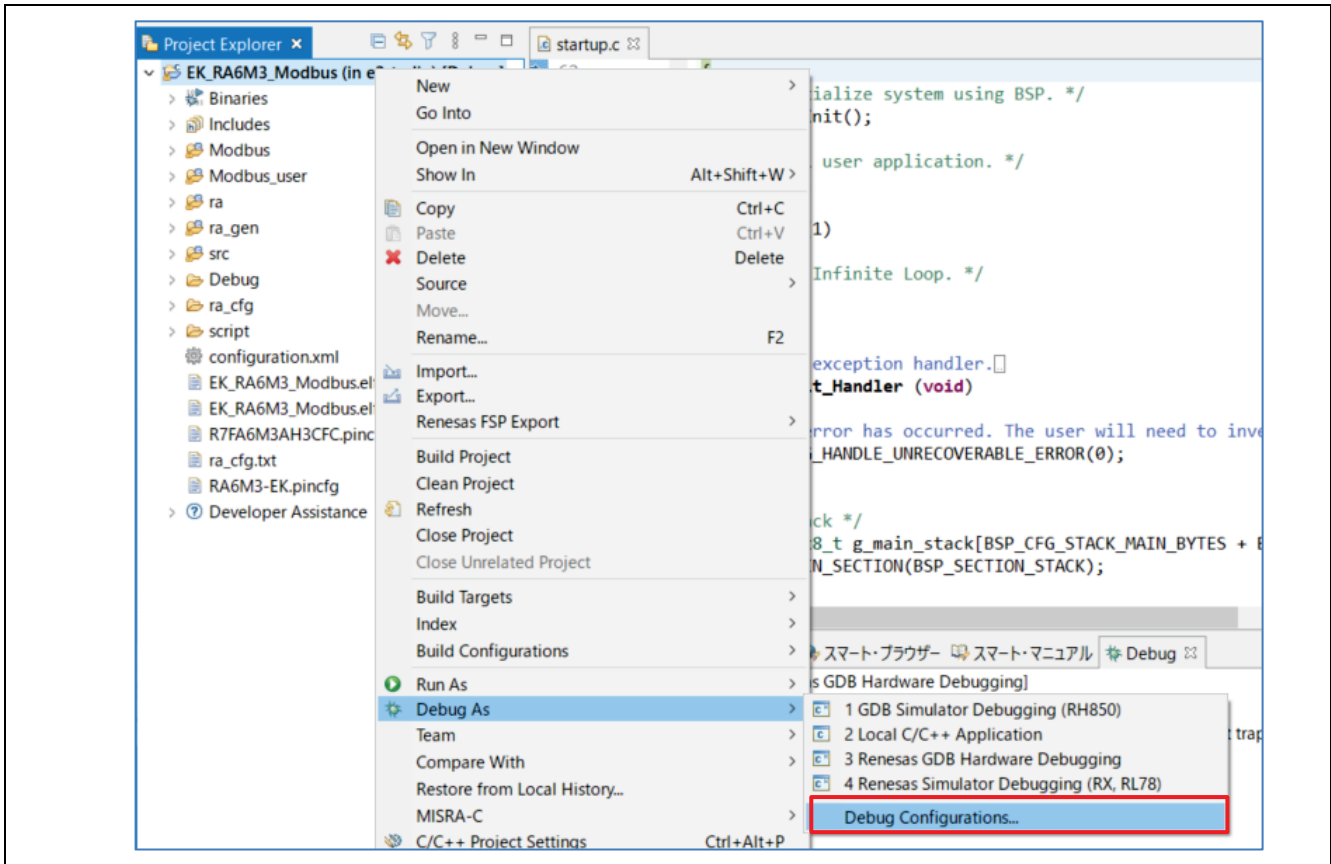
Check the **select root directory** and select **r01an0711xx0100-ra6m3-modbus_tcp** folder > **Finish**.



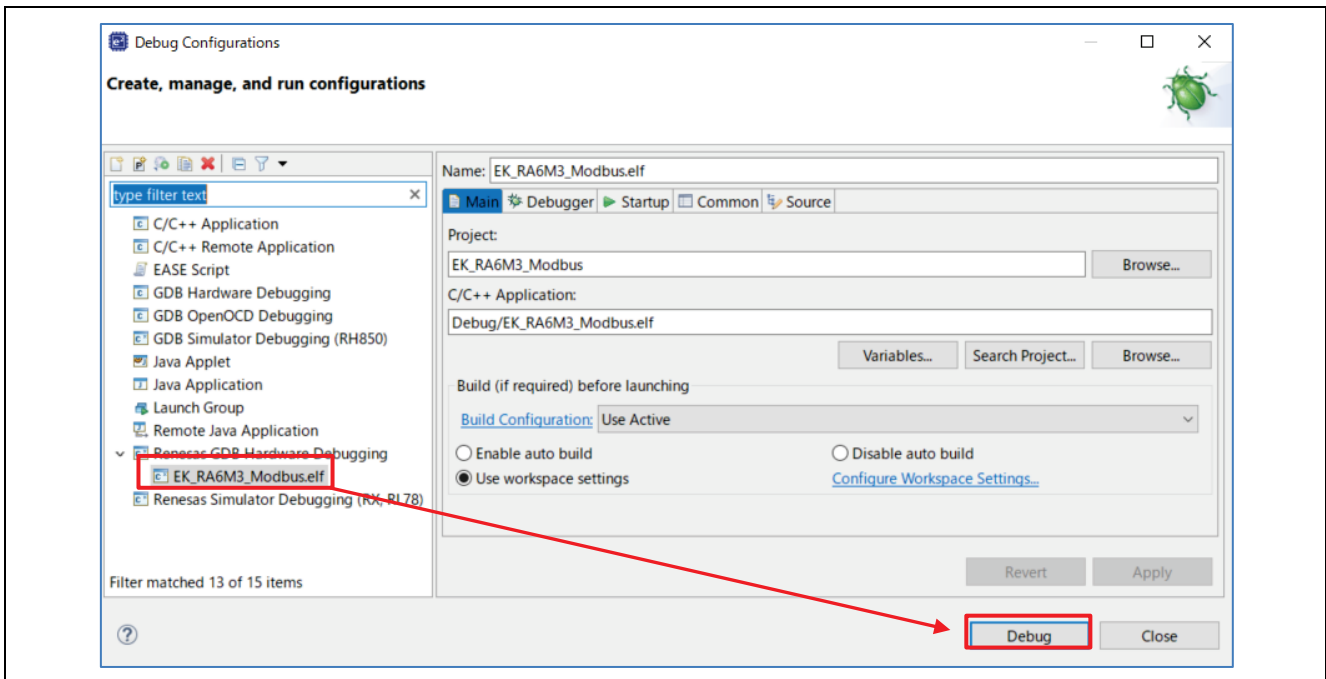
2. Execute the build.
At this time, confirm that there are no build errors.



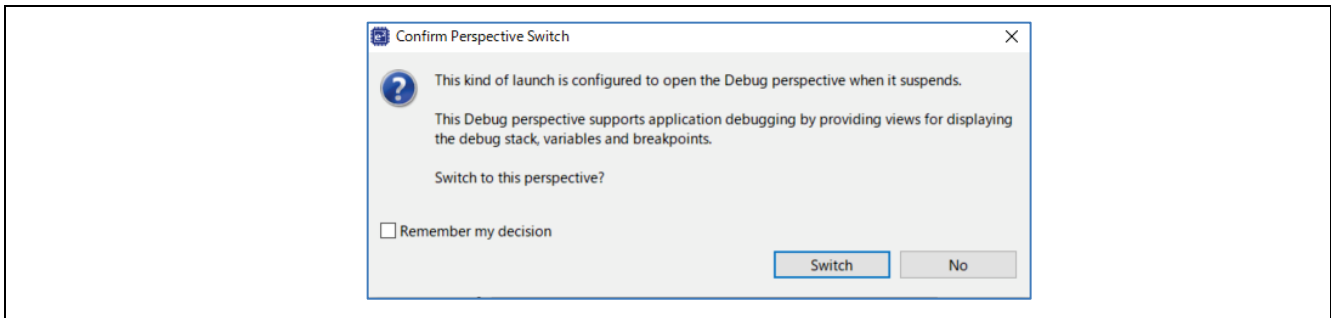
- Download the application and run the debugger.
After connecting the board and J-Link OB, start debugging using the following procedure. In **Project Explorer** view, right-click the node of project to be debugged and select **Debug As > Debug Configurations**.



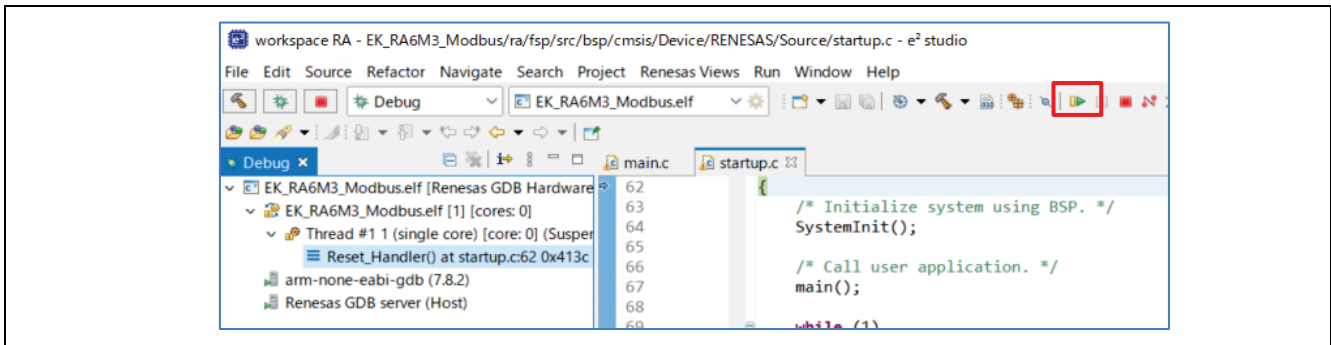
- Program download.
Select **Renesas DBG Hardware Debugging > EK_RA6M3_Modbus.elf** , then press **Debug**.



The following dialog will appear, so switch to the debug screen.



5. Program start.
 Click the **Resume** button.
 When debugging is started, the program is interrupted at `main.c`;
 Click the **Resume** button again to run the program.



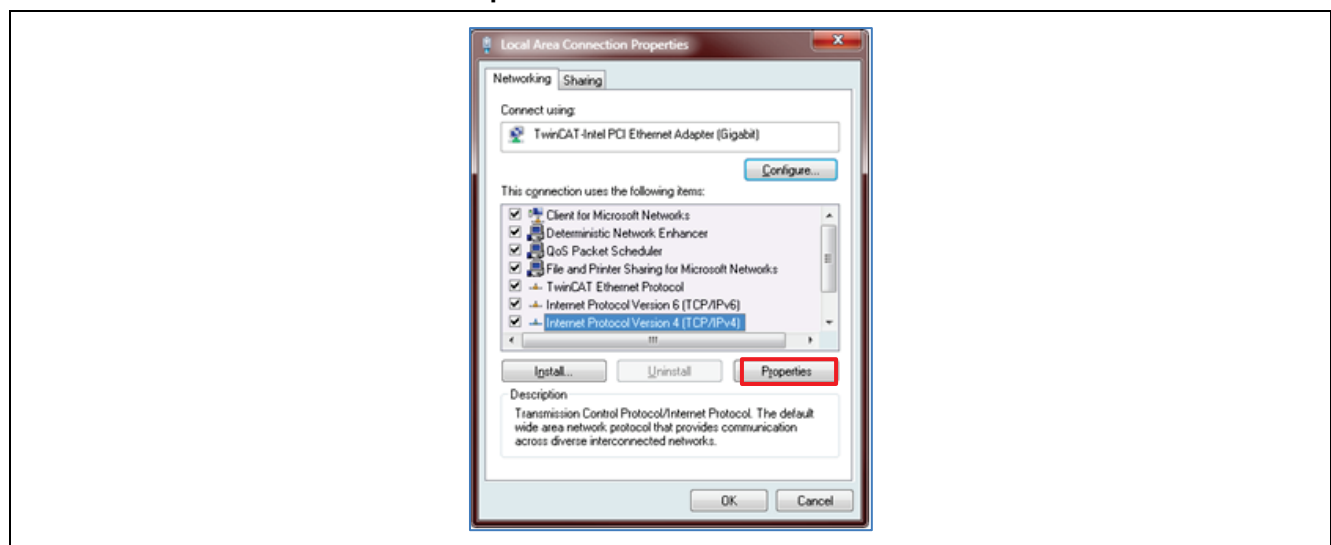
7. Modbus Communication Demo with Evaluation Tool

This section uses the evaluation tool (`ModbusDemoApplication.exe`) to demonstrate the procedure for checking the demo operation of the sample program.

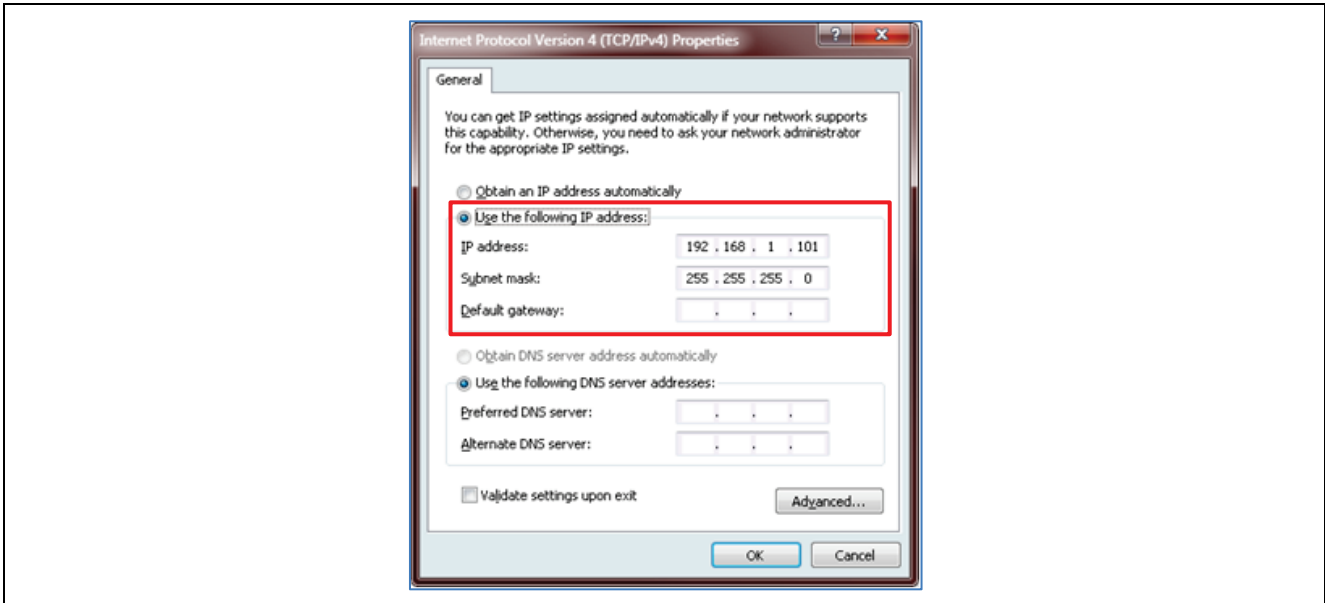
7.1 IP Address Setting

To run the Modbus sample program, it is necessary to set the IP address of the PC to the same domain as the evaluation board.

1. Open the network connections list.
Control panel > Network and Sharing Center > Change adapter settings
 Double-click (or right-click) on the Local Area Connection, then select **Properties**.
 Select TCP/IPv4 and click the **Properties** button.

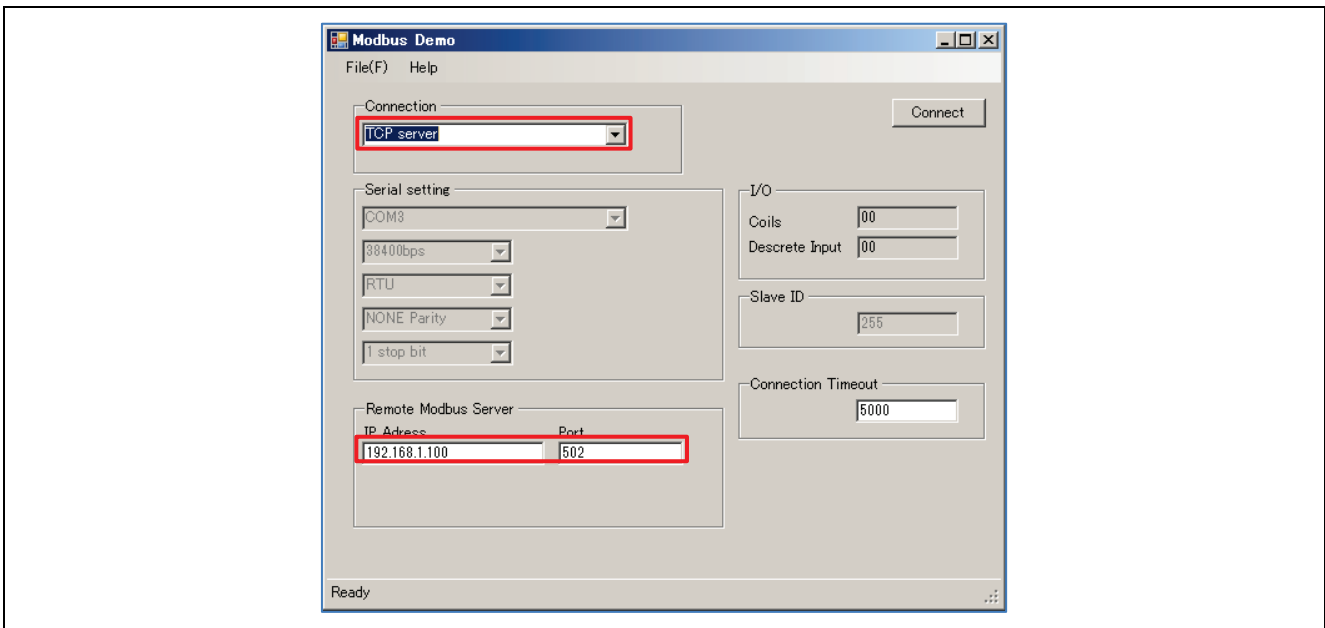


- Set IP-address to 192.168.1.101, and subnet mask to 255.255.255.0.



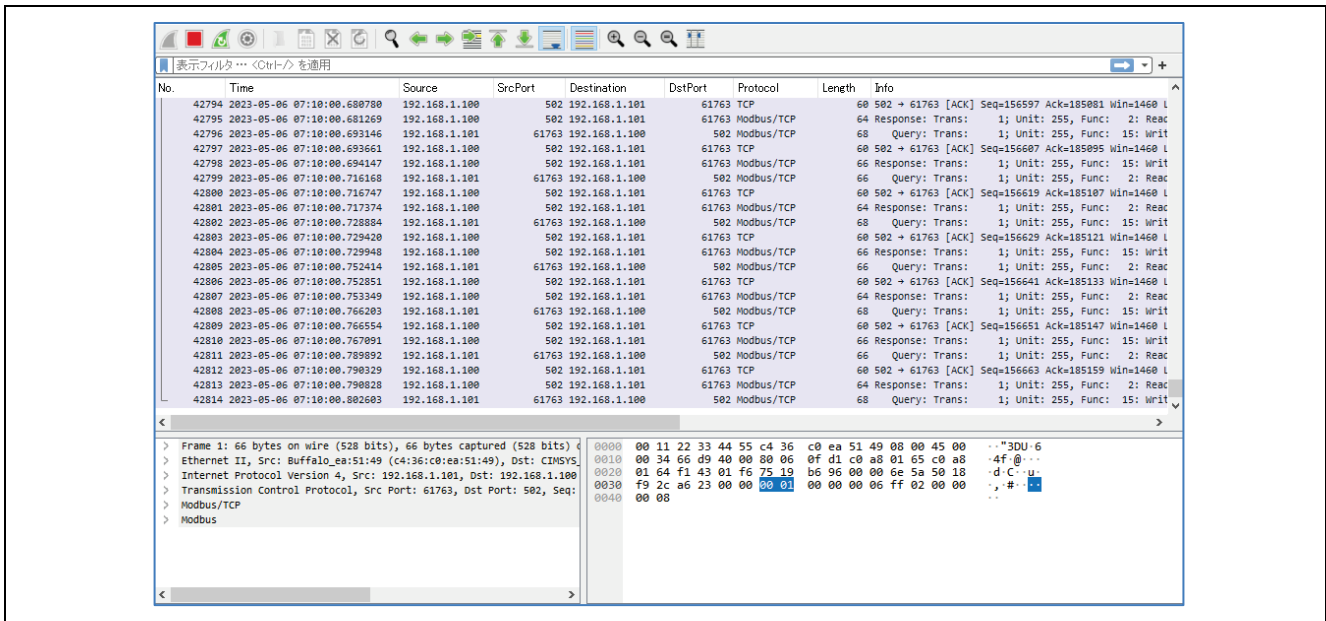
7.2 Setting of Modbus Demo Application

- Open `ModbusDemoApplication.exe` which is included in this example project package. "Connection" is selected to TCP server and set server IP address (for example, "192.168.1.100") and Port No (for example, "502").



- When **Connect** button is clicked, LED blinking is started with Modbus communication.

- By using a packet analysis tool like Wireshark, you can check the Modbus communication status as follows.



7.2.1 Specification of Demonstration

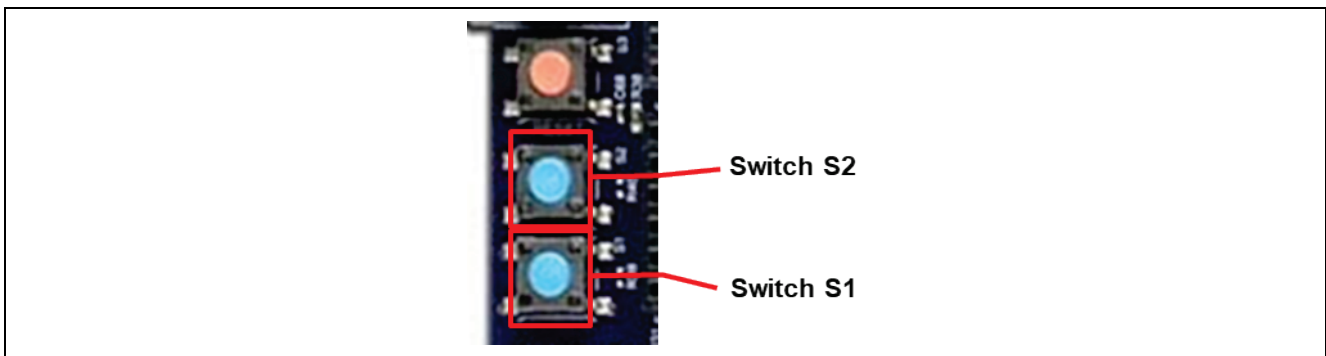
By communicating with PC through the Modbus TCP protocol, LED blinking speed is controlled dynamically. For this control, Read Coil and Write Coil commands are used. Specifically, the following sequence is executed.

- PC application checks the states of the switches (S1 and S2), by using Modbus "Read Discrete Input" function code.
- According to the states of the switches, the states of the output ports, which are connected to LED are updated periodically.

Updating span = ([SW setting value] + 1) x 10 [msec] : when SW value is less than 0x7F
 Fixed 10 msec : when SW value is 0x7F or more

* (S1 : 0x20, S2 : 0x40)

* While pressing Switch S1 or S2, the blinking speed of the LED will change.

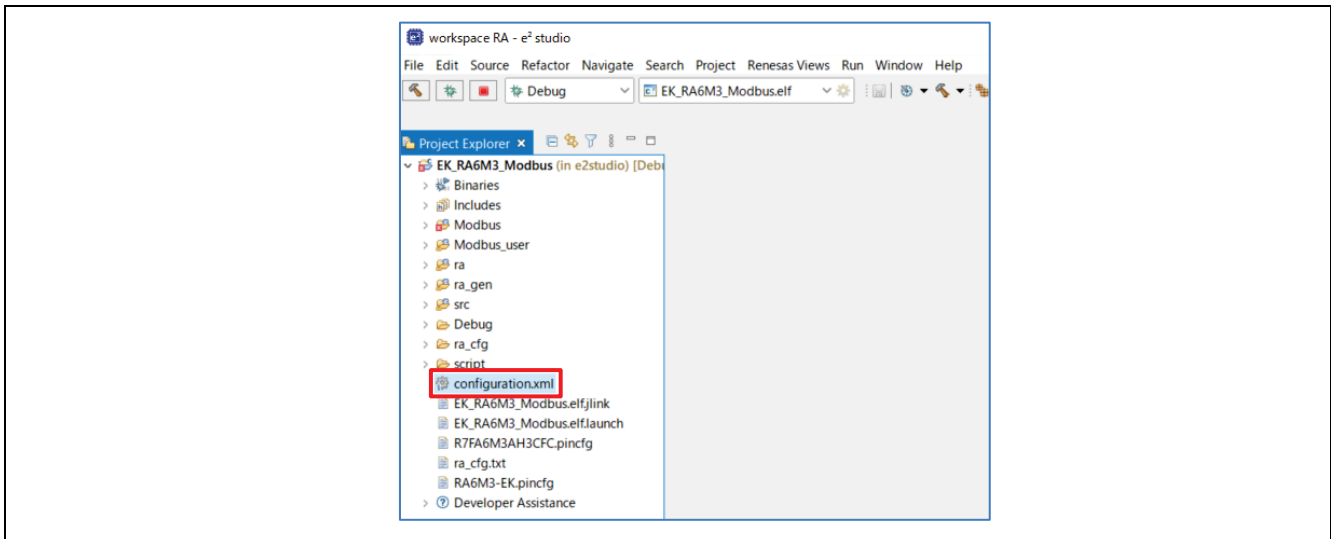


8. Appendix

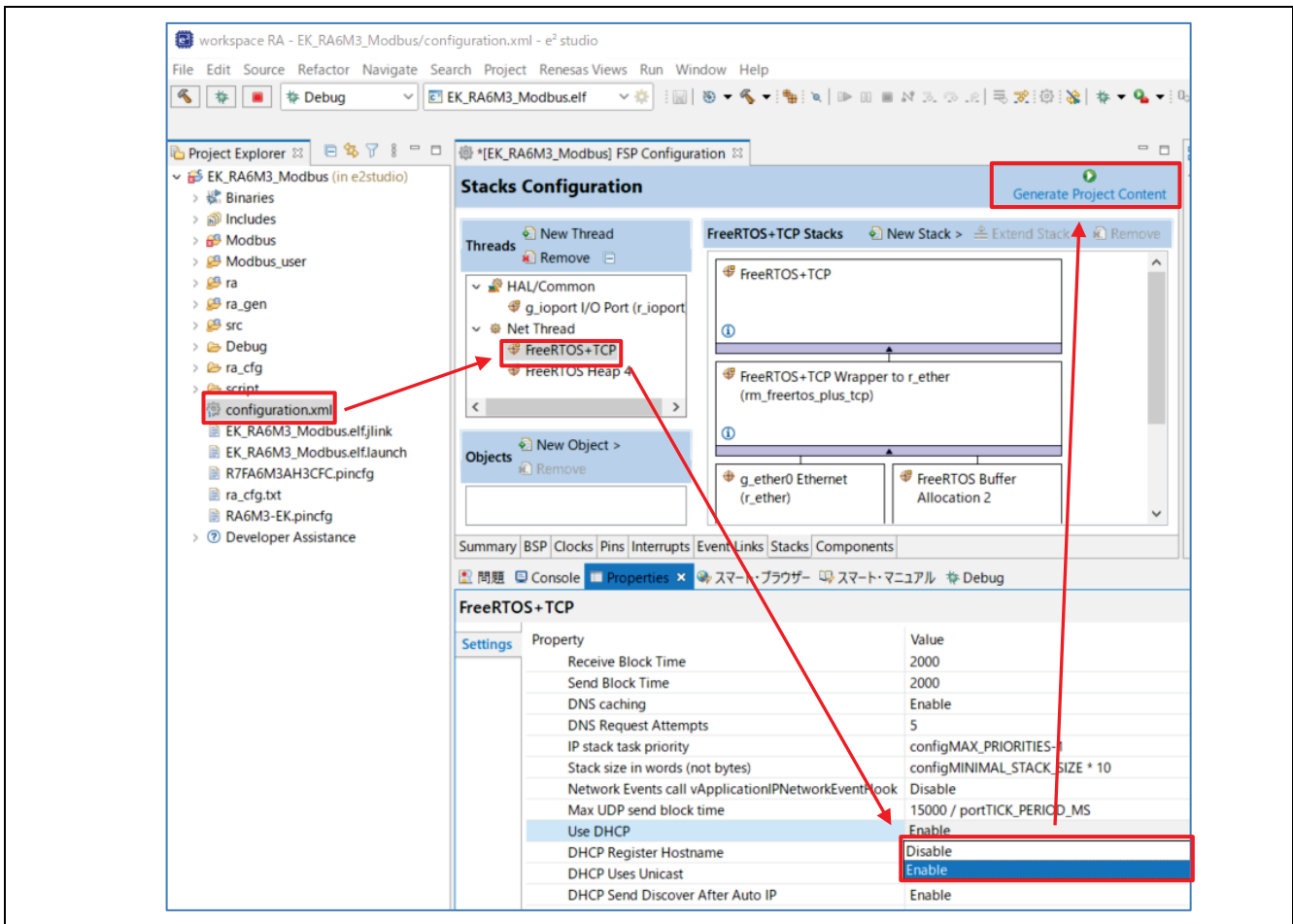
8.1 Appendix A : DHCP Mode

Set DHCP mode using FSP.

1. Open `configuration.xml` from Modbus project.



2. Click **Stacks** tab to open the Stacks Configuration window and select the **FreeRTOS + TCP** in the left threads window. Open the properties, change **Use DHCP** to **Enable** and click **Generate Project Content** button.



8.2 Appendix B : User-defined Function

This section describes Modbus function codes. Users can register their own implementation of Modbus function code with Modbus protocol stack.

8.2.1 Register Callback Function

Define a user-written function. This sample program uses an LED light as example.

Definition file: `/Modbus_user/modbus_init.c`

- Callback function corresponding to function code1 (Read coil)
 - Read from the coil corresponding to the switches.
- Callback function corresponding to function code5 (Write single coil)
 - Write to the coil corresponding to the LED.

8.2.2 Register Function Code

Definition file: `/Modbus_user/modbus_func.c`

Define the function to be registered in call back function.

8.2.3 User-Defined Functions

User-defined functions are defined in the `Modbus_user/modbus_user.c`

Use the user-defined Read/Write function to process each function.

The corresponding Read/Write function and its table of each address of Coil / Discrete Input / Holding register / Input register are prepared.

【Read Coils】

address	access
0001	LED1, g_coils_area
0002	LED2, g_coils_area
0003	LED3, g_coils_area
0004	g_coils_area
0005	g_coils_area
0006	g_coils_area
0007	g_coils_area
0008	g_coils_area

【Write_Single_Coils】

address	access
0001	LED1, g_coils_area
0002	LED2, g_coils_area
0003	LED3, g_coils_area
0004	g_coils_area
0005	g_coils_area
0006	g_coils_area
0007	g_coils_area
0008	g_coils_area

【Read_Discrete_Inputs】

address	access
1001	g_discrete_input_area
1002	g_discrete_input_area
1003	g_discrete_input_area
1004	g_discrete_input_area
1005	g_discrete_input_area
1006	S1,g_discrete_input_area
1007	S1,g_discrete_input_area
1008	g_discrete_input_area
1009	g_discrete_input_area
10010	ILLEGAL DATA ADDRESS
10011	g_discrete_input_area
10012	g_discrete_input_area

【Read_Discrete_Inputs】

address	access
3001	g_input_reg_area
3002	g_input_reg_area
3003	g_input_reg_area
3004	ILLEGAL DATA ADDRESS
3005	ILLEGAL DATA ADDRESS
3006	ILLEGAL DATA ADDRESS
3007	ILLEGAL DATA ADDRESS
3008	g_input_reg_area

【READ_HOLDING_REGISTERS】

address	access
4001	g_holding_reg_area
4002	g_holding_reg_area
4003	g_holding_reg_area
4004	ILLEGAL DATA ADDRESS
4005	ILLEGAL DATA ADDRESS
4006	ILLEGAL DATA ADDRESS
4007	g_holding_reg_area

【WRITE_SINGLE_REGISTER】

address	access
4001	g_holding_reg_area
4002	g_holding_reg_area
4003	g_holding_reg_area
4004	ILLEGAL DATA ADDRESS
4005	ILLEGAL DATA ADDRESS
4006	ILLEGAL DATA ADDRESS
4007	g_holding_reg_area

Revision History

Rev.	Date	Description	
		Page	Summary
1.00	Jun.30.23	-	First version
1.01	Oct.17.23	4	Add support FSP

General Precautions in the Handling of Microprocessing Unit and Microcontroller Unit Products

The following usage notes are applicable to all Microprocessing unit and Microcontroller unit products from Renesas. For detailed usage notes on the products covered by this document, refer to the relevant sections of the document as well as any technical updates that have been issued for the products.

1. Precaution against Electrostatic Discharge (ESD)

A strong electrical field, when exposed to a CMOS device, can cause destruction of the gate oxide and ultimately degrade the device operation. Steps must be taken to stop the generation of static electricity as much as possible, and quickly dissipate it when it occurs. Environmental control must be adequate. When it is dry, a humidifier should be used. This is recommended to avoid using insulators that can easily build up static electricity. Semiconductor devices must be stored and transported in an anti-static container, static shielding bag or conductive material. All test and measurement tools including work benches and floors must be grounded. The operator must also be grounded using a wrist strap. Semiconductor devices must not be touched with bare hands. Similar precautions must be taken for printed circuit boards with mounted semiconductor devices.

2. Processing at power-on

The state of the product is undefined at the time when power is supplied. The states of internal circuits in the LSI are indeterminate and the states of register settings and pins are undefined at the time when power is supplied. In a finished product where the reset signal is applied to the external reset pin, the states of pins are not guaranteed from the time when power is supplied until the reset process is completed. In a similar way, the states of pins in a product that is reset by an on-chip power-on reset function are not guaranteed from the time when power is supplied until the power reaches the level at which resetting is specified.

3. Input of signal during power-off state

Do not input signals or an I/O pull-up power supply while the device is powered off. The current injection that results from input of such a signal or I/O pull-up power supply may cause malfunction and the abnormal current that passes in the device at this time may cause degradation of internal elements. Follow the guideline for input signal during power-off state as described in your product documentation.

4. Handling of unused pins

Handle unused pins in accordance with the directions given under handling of unused pins in the manual. The input pins of CMOS products are generally in the high-impedance state. In operation with an unused pin in the open-circuit state, extra electromagnetic noise is induced in the vicinity of the LSI, an associated shoot-through current flows internally, and malfunctions occur due to the false recognition of the pin state as an input signal become possible.

5. Clock signals

After applying a reset, only release the reset line after the operating clock signal becomes stable. When switching the clock signal during program execution, wait until the target clock signal is stabilized. When the clock signal is generated with an external resonator or from an external oscillator during a reset, ensure that the reset line is only released after full stabilization of the clock signal. Additionally, when switching to a clock signal produced with an external resonator or by an external oscillator while program execution is in progress, wait until the target clock signal is stable.

6. Voltage application waveform at input pin

Waveform distortion due to input noise or a reflected wave may cause malfunction. If the input of the CMOS device stays in the area between V_{IL} (Max.) and V_{IH} (Min.) due to noise, for example, the device may malfunction. Take care to prevent chattering noise from entering the device when the input level is fixed, and also in the transition period when the input level passes through the area between V_{IL} (Max.) and V_{IH} (Min.).

7. Prohibition of access to reserved addresses

Access to reserved addresses is prohibited. The reserved addresses are provided for possible future expansion of functions. Do not access these addresses as the correct operation of the LSI is not guaranteed.

8. Differences between products

Before changing from one product to another, for example to a product with a different part number, confirm that the change will not lead to problems. The characteristics of a microprocessing unit or microcontroller unit products in the same group but having a different part number might differ in terms of internal memory capacity, layout pattern, and other factors, which can affect the ranges of electrical characteristics, such as characteristic values, operating margins, immunity to noise, and amount of radiated noise. When changing to a product with a different part number, implement a system-evaluation test for the given product.

- Arm® and Cortex® are registered trademarks of Arm Limited (or its subsidiaries) in the EU and/or elsewhere. All rights reserved.
- Ethernet is a registered trademark of Fuji Xerox Co., Ltd.
- Modbus is a registered trademark of Schneider Electric, licensed to the Modbus Organization, Inc.
- Additionally all product names and service names in this document are a trademark or a registered trademark which belongs to the respective owners. a trademark or a registered trademark which belongs to the respective owners.

Notice

1. Descriptions of circuits, software and other related information in this document are provided only to illustrate the operation of semiconductor products and application examples. You are fully responsible for the incorporation or any other use of the circuits, software, and information in the design of your product or system. Renesas Electronics disclaims any and all liability for any losses and damages incurred by you or third parties arising from the use of these circuits, software, or information.
2. Renesas Electronics hereby expressly disclaims any warranties against and liability for infringement or any other claims involving patents, copyrights, or other intellectual property rights of third parties, by or arising from the use of Renesas Electronics products or technical information described in this document, including but not limited to, the product data, drawings, charts, programs, algorithms, and application examples.
3. No license, express, implied or otherwise, is granted hereby under any patents, copyrights or other intellectual property rights of Renesas Electronics or others.
4. You shall be responsible for determining what licenses are required from any third parties, and obtaining such licenses for the lawful import, export, manufacture, sales, utilization, distribution or other disposal of any products incorporating Renesas Electronics products, if required.
5. You shall not alter, modify, copy, or reverse engineer any Renesas Electronics product, whether in whole or in part. Renesas Electronics disclaims any and all liability for any losses or damages incurred by you or third parties arising from such alteration, modification, copying or reverse engineering.
6. Renesas Electronics products are classified according to the following two quality grades: "Standard" and "High Quality". The intended applications for each Renesas Electronics product depends on the product's quality grade, as indicated below.

"Standard": Computers; office equipment; communications equipment; test and measurement equipment; audio and visual equipment; home electronic appliances; machine tools; personal electronic equipment; industrial robots; etc.

"High Quality": Transportation equipment (automobiles, trains, ships, etc.); traffic control (traffic lights); large-scale communication equipment; key financial terminal systems; safety control equipment; etc.

Unless expressly designated as a high reliability product or a product for harsh environments in a Renesas Electronics data sheet or other Renesas Electronics document, Renesas Electronics products are not intended or authorized for use in products or systems that may pose a direct threat to human life or bodily injury (artificial life support devices or systems; surgical implantations; etc.), or may cause serious property damage (space system; undersea repeaters; nuclear power control systems; aircraft control systems; key plant systems; military equipment; etc.). Renesas Electronics disclaims any and all liability for any damages or losses incurred by you or any third parties arising from the use of any Renesas Electronics product that is inconsistent with any Renesas Electronics data sheet, user's manual or other Renesas Electronics document.
7. No semiconductor product is absolutely secure. Notwithstanding any security measures or features that may be implemented in Renesas Electronics hardware or software products, Renesas Electronics shall have absolutely no liability arising out of any vulnerability or security breach, including but not limited to any unauthorized access to or use of a Renesas Electronics product or a system that uses a Renesas Electronics product. RENESAS ELECTRONICS DOES NOT WARRANT OR GUARANTEE THAT RENESAS ELECTRONICS PRODUCTS, OR ANY SYSTEMS CREATED USING RENESAS ELECTRONICS PRODUCTS WILL BE INVULNERABLE OR FREE FROM CORRUPTION, ATTACK, VIRUSES, INTERFERENCE, HACKING, DATA LOSS OR THEFT, OR OTHER SECURITY INTRUSION ("Vulnerability Issues"). RENESAS ELECTRONICS DISCLAIMS ANY AND ALL RESPONSIBILITY OR LIABILITY ARISING FROM OR RELATED TO ANY VULNERABILITY ISSUES. FURTHERMORE, TO THE EXTENT PERMITTED BY APPLICABLE LAW, RENESAS ELECTRONICS DISCLAIMS ANY AND ALL WARRANTIES, EXPRESS OR IMPLIED, WITH RESPECT TO THIS DOCUMENT AND ANY RELATED OR ACCOMPANYING SOFTWARE OR HARDWARE, INCLUDING BUT NOT LIMITED TO THE IMPLIED WARRANTIES OF MERCHANTABILITY, OR FITNESS FOR A PARTICULAR PURPOSE.
8. When using Renesas Electronics products, refer to the latest product information (data sheets, user's manuals, application notes, "General Notes for Handling and Using Semiconductor Devices" in the reliability handbook, etc.), and ensure that usage conditions are within the ranges specified by Renesas Electronics with respect to maximum ratings, operating power supply voltage range, heat dissipation characteristics, installation, etc. Renesas Electronics disclaims any and all liability for any malfunctions, failure or accident arising out of the use of Renesas Electronics products outside of such specified ranges.
9. Although Renesas Electronics endeavors to improve the quality and reliability of Renesas Electronics products, semiconductor products have specific characteristics, such as the occurrence of failure at a certain rate and malfunctions under certain use conditions. Unless designated as a high reliability product or a product for harsh environments in a Renesas Electronics data sheet or other Renesas Electronics document, Renesas Electronics products are not subject to radiation resistance design. You are responsible for implementing safety measures to guard against the possibility of bodily injury, injury or damage caused by fire, and/or danger to the public in the event of a failure or malfunction of Renesas Electronics products, such as safety design for hardware and software, including but not limited to redundancy, fire control and malfunction prevention, appropriate treatment for aging degradation or any other appropriate measures. Because the evaluation of microcomputer software alone is very difficult and impractical, you are responsible for evaluating the safety of the final products or systems manufactured by you.
10. Please contact a Renesas Electronics sales office for details as to environmental matters such as the environmental compatibility of each Renesas Electronics product. You are responsible for carefully and sufficiently investigating applicable laws and regulations that regulate the inclusion or use of controlled substances, including without limitation, the EU RoHS Directive, and using Renesas Electronics products in compliance with all these applicable laws and regulations. Renesas Electronics disclaims any and all liability for damages or losses occurring as a result of your noncompliance with applicable laws and regulations.
11. Renesas Electronics products and technologies shall not be used for or incorporated into any products or systems whose manufacture, use, or sale is prohibited under any applicable domestic or foreign laws or regulations. You shall comply with any applicable export control laws and regulations promulgated and administered by the governments of any countries asserting jurisdiction over the parties or transactions.
12. It is the responsibility of the buyer or distributor of Renesas Electronics products, or any other party who distributes, disposes of, or otherwise sells or transfers the product to a third party, to notify such third party in advance of the contents and conditions set forth in this document.
13. This document shall not be reprinted, reproduced or duplicated in any form, in whole or in part, without prior written consent of Renesas Electronics.
14. Please contact a Renesas Electronics sales office if you have any questions regarding the information contained in this document or Renesas Electronics products.

(Note1) "Renesas Electronics" as used in this document means Renesas Electronics Corporation and also includes its directly or indirectly controlled subsidiaries.

(Note2) "Renesas Electronics product(s)" means any product developed or manufactured by or for Renesas Electronics.

(Rev.5.0-1 October 2020)

Corporate Headquarters

TOYOSU FORESIA, 3-2-24 Toyosu,
Koto-ku, Tokyo 135-0061, Japan
www.renesas.com

Trademarks

Renesas and the Renesas logo are trademarks of Renesas Electronics Corporation. All trademarks and registered trademarks are the property of their respective owners.

Contact information

For further information on a product, technology, the most up-to-date version of a document, or your nearest sales office, please visit:
www.renesas.com/contact/.