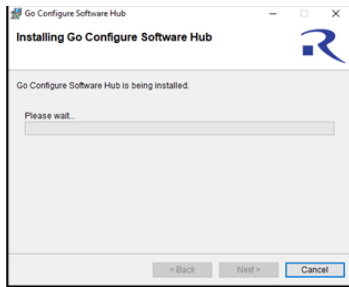
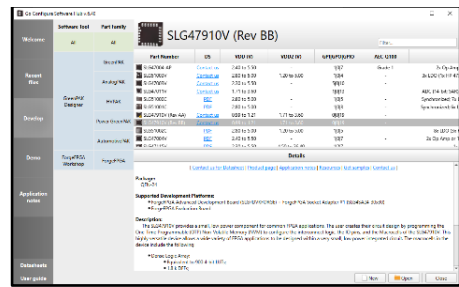


## ForgeFPGA Advanced Development Board R1.2 Quick Start Guide



### 1. Install Go Configure Software Hub

Download and install the latest Go Configure Software Hub version from <https://www.renesas.com/software-tool/go-configure-software-hub>.



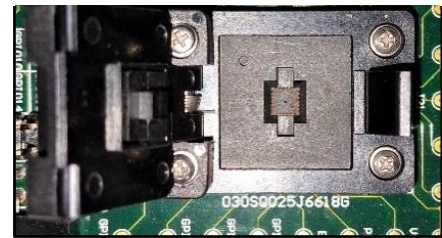
### 2. Create Your Project

Start Go Configure Software Hub and select appropriate ForgeFPGA product family IC



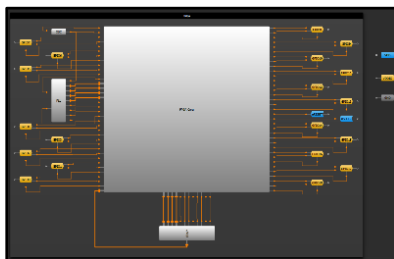
### 3. Connect Socket Adapter

Attach the Socket Adapter to the ForgeFPGA Dev. Board as shown on the image above. Connect ForgeFPGA Dev. Board to power supply using AC/DC 12V Power Supply and connect it to Windows, Linux or MacOS based computer using USB-C cable included in the kit.





### 4. Place the Chip

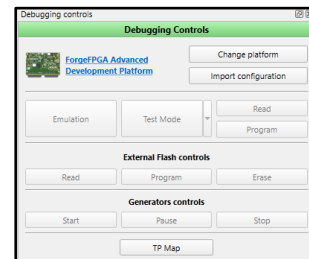
Use tweezers to place one FPGA chip in the socket. Make sure that the pin 1 marker on the socket corresponds to first pin dot on the chip. Close the socket.



### 5. Use Debug Tool

Save the project and open "FPGA Editor"  to synthesize code before programming, emulating, or testing.

Click "Debug"  toolbar icon next to FPGA editor to start the FPGA Emulation Tool. Choose "ForgeFPGA Advanced Development Board R1.2".



### 6. Emulate or Program the Chip

Press the "Emulation" button to load your project code onto the chip. At this point the chip will operate according to the project code. Emulation can be performed multiple times, even on programmed chips. Press the "Emulation" button again to exit the emulation mode. Press the "Program" button to program the chip with current project.