

e² studio 3.0

Installing into Existing Eclipse Environment

Introduction

Renesas e² studio can be installed as a set of plugins into an existing Eclipse environment. This guide details the process for installing these plugins and the required Eclipse environment. It also details the procedure for updating e² studio plugins already installed into an Eclipse environment.

Contents

1. Requirements	2
2. Installation Methods	2
3. Installation Procedure.....	3
4. Updating from previous versions.....	6
5. Resolving Dependency Problems	7
6. Known Issues	9

1. Requirements

1.1 Eclipse

e² studio 3.0 has been developed for use with Eclipse 4.3.1. While installation into later versions of Eclipse may be possible, full functionality cannot be guaranteed. This installation procedure has been tested in Eclipse 4.3.1 & 4.3.2.

There are known issues using e² studio plugins in 64 bit versions of Eclipse. On 64 bit operating systems use of the 32 bit version of Eclipse is recommended.

1.1.1 CDT

e² studio 3.0 uses a modified version of CDT 8.3 which includes additional features and bug-fixes not included in the standard CDT 8.3 release. Use of this CDT is a requirement for using e² studio plugins. This CDT is available from the e² studio Update Site and will be installed along with the e² studio plugins. The full SDK for the modified CDT, including full source code, is available from the e² studio Update Site.

If you already have CDT installed & encounter errors during installation it may be necessary to manually update to the e² studio version before installation, please see section 5.1 for instructions.

1.2 Code Generation Feature

The Code Generation feature of e² studio 3.0 requires .Net Framework 4. It is recommended that you do not select the Code Generation feature unless .Net Framework 4 or 4.5 is installed.

Important: Installing the Code Generation feature requires Administrative privileges. If you have User Account Control enabled, or are using a non-administrative account, you will be prompted for permissions as part of the installation process.

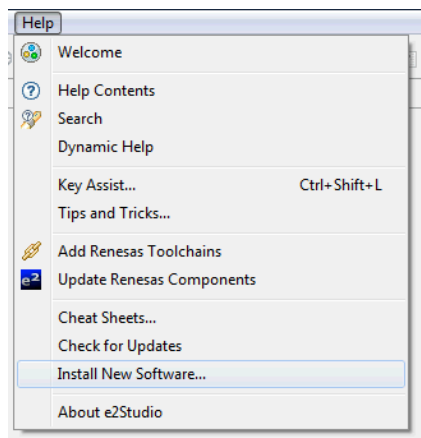
2. Installation Methods

Renesas e² studio plugins are available either as an internet accessible Eclipse Update Site or as a set of downloadable archive update sites.

3. Installation Procedure

3.1 Adding e² studio Update Sites

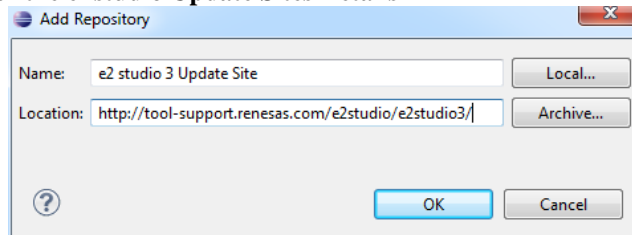
1. Go to Help -> Install New Software...



2. Click the “Add” button to add the e² studio Update Sites
You will need to add the following sites:

Name	Location
e ² studio 3 Update Site	http://tool-support.renesas.com/e2studio/e2studio3/
e ² studio 3 CDT Update Site (Required only if CDT already installed)	http://tool-support.renesas.com/e2studio/e2studio3/cdt/

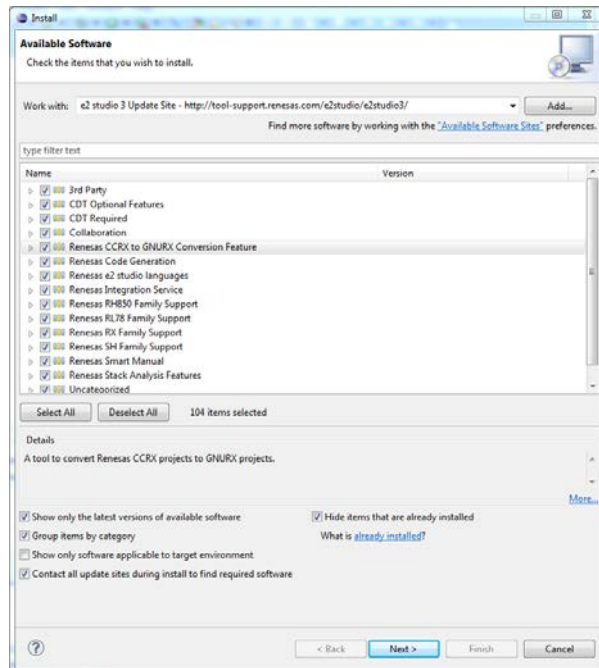
3. Enter the e² studio Update Sites Details



4. Click OK

3.2 Installing e² studio Plugins

1. Open Install New Software
2. Select the e² studio Update Site
3. Select the Renesas Plugins you wish to install



Select “Group items by category”. Not doing so can result in e² studio branding being installed into your Eclipse environment.

Installing e² studio plugins may require the installation of additional plugins from the Eclipse Update Site, for example EMF. To allow this please ensure “Contact all update sites during install” is checked.

It is recommended that you select all categories except CDT Optional Features. However if you wish to install support only for a device family simply select the appropriate Support category.

4. Click Next
5. Check Install Details

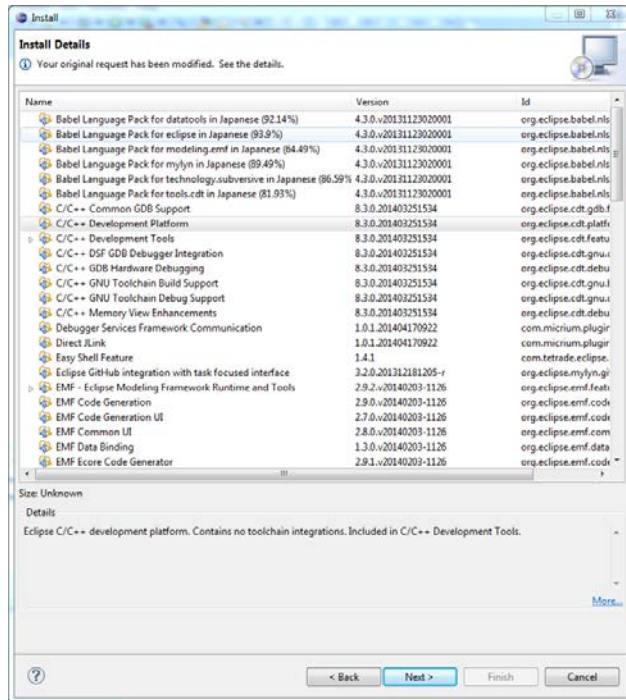
Verify that the following plugins are not included

- “Add-on Function for p2” – org.eclipse.equinox.p2.extras.feature.feature.group
- “e2 studio” – com.renesas.product

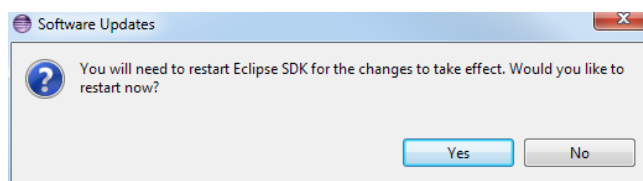
6. Click Next and Accept the License Agreements

- ☒ I accept the terms of the license agreements
☐ I do not accept the terms of the license agreements

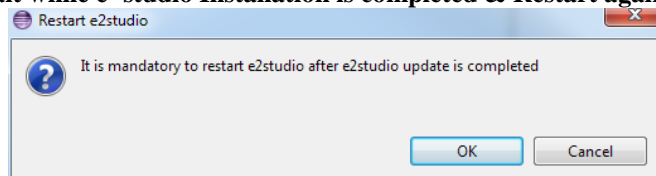
7. Click Finish then wait for installation process to complete



8. Restart when prompted



9. Wait while e² studio Installation is completed & Restart again



You can enable notification of future updates in Preferences -> Install/Update -> Automatic Updates.

4. Updating from previous versions

Updating from a previous version of e² studio plugins is not supported between major versions (e.g. 2.x -> 3.x).

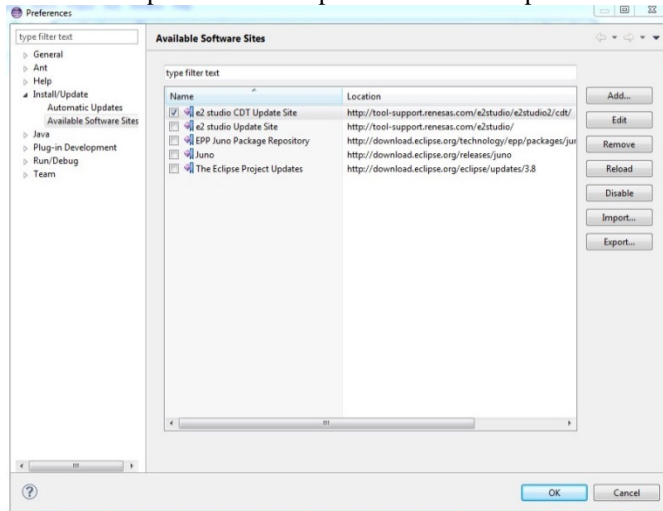
5. Resolving Dependency Problems

Due to the nature of the Eclipse Platform you may encounter errors when installing e² studio plugins due to conflicting dependencies. Workarounds for common dependency problems are listed below.

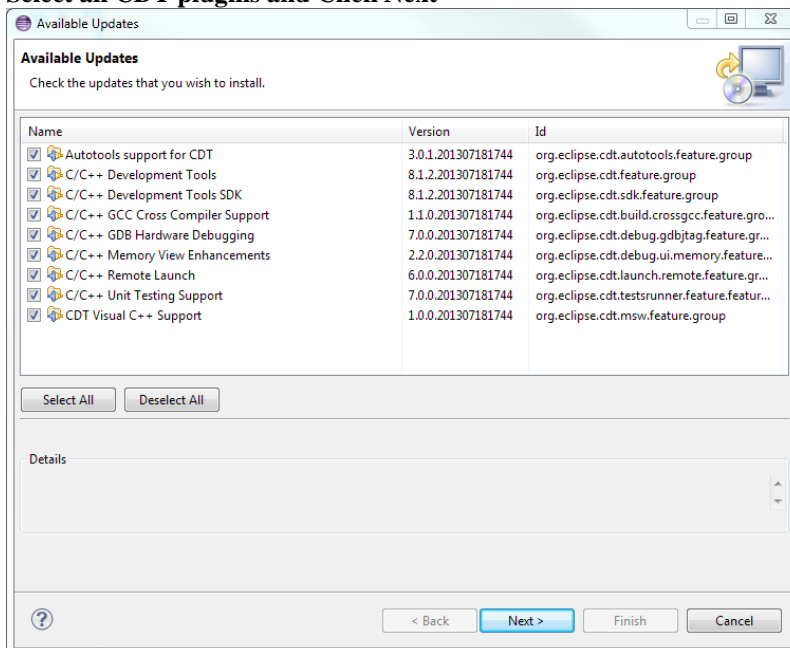
5.1 CDT

1. Add the e² studio CDT Update Sites using the instructions in section 3.1.
2. Go to Window -> Preferences
3. Select Install/Update -> Available Software Sites

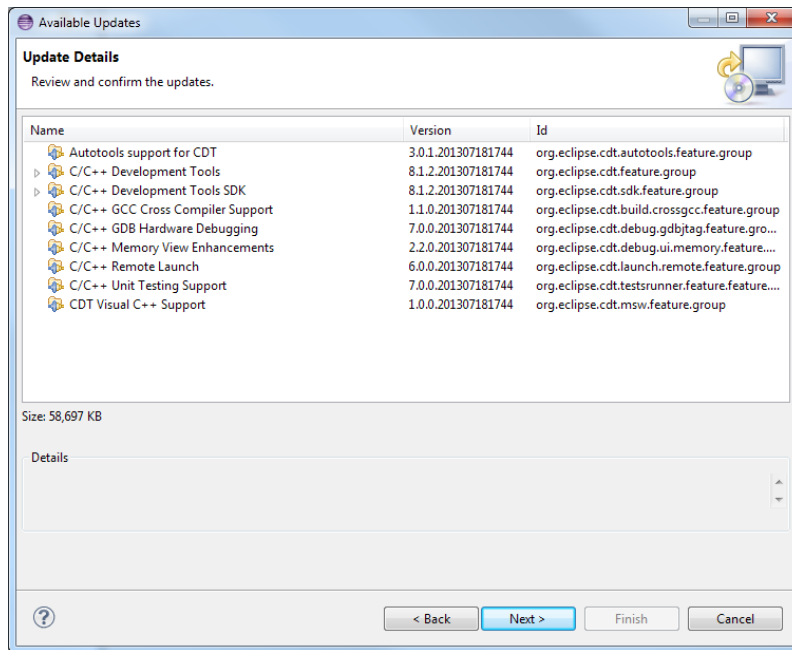
Disable all Update Sites except e² studio CDT Update Site



4. Click OK to Apply the changes
5. Go to Help -> Check For Updates
6. Select all CDT plugins and Click Next



7. Review and the Click Next



8. Accept the License Agreements & Click Finish

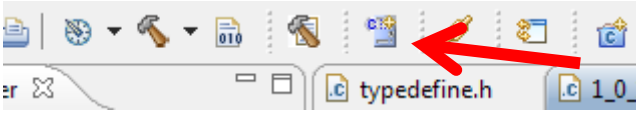
- ☒ I accept the terms of the license agreements
☐ I do not accept the terms of the license agreements

9. Wait for the Installation Process to Finish then Restart

10. Repeat Steps 3 & 4 but enable any updates sites you disabled

6. Known Issues

Below is a list of issues which specifically effect usage after installing into an Eclipse environment. For a full list of known issues in e² studio 3.0 please see the main release notes.

ID	Description
3804	<p>Code Generator not fully installed if it is added after installation of other e² studio plugins.</p> <p>If installing the Code Generation Feature after installing other e² studio plugins you may need to manually register the COM service before Code Generation becomes available during Project Generation.</p> <p>To do this create a new CCRX, GNURX or GNURL78 project, then select “New Code Generator” from the toolbar.</p> 
3884	HEW Project Converter does not function in a 64-bit Eclipse Environment
3888	Code Generator does not function in a 64-bit Eclipse Environment
3899	Emulator Selection does not function in a 64-bit Eclipse Environment
-	Issues may be encountered if any part the Eclipse or Project path contains spaces.