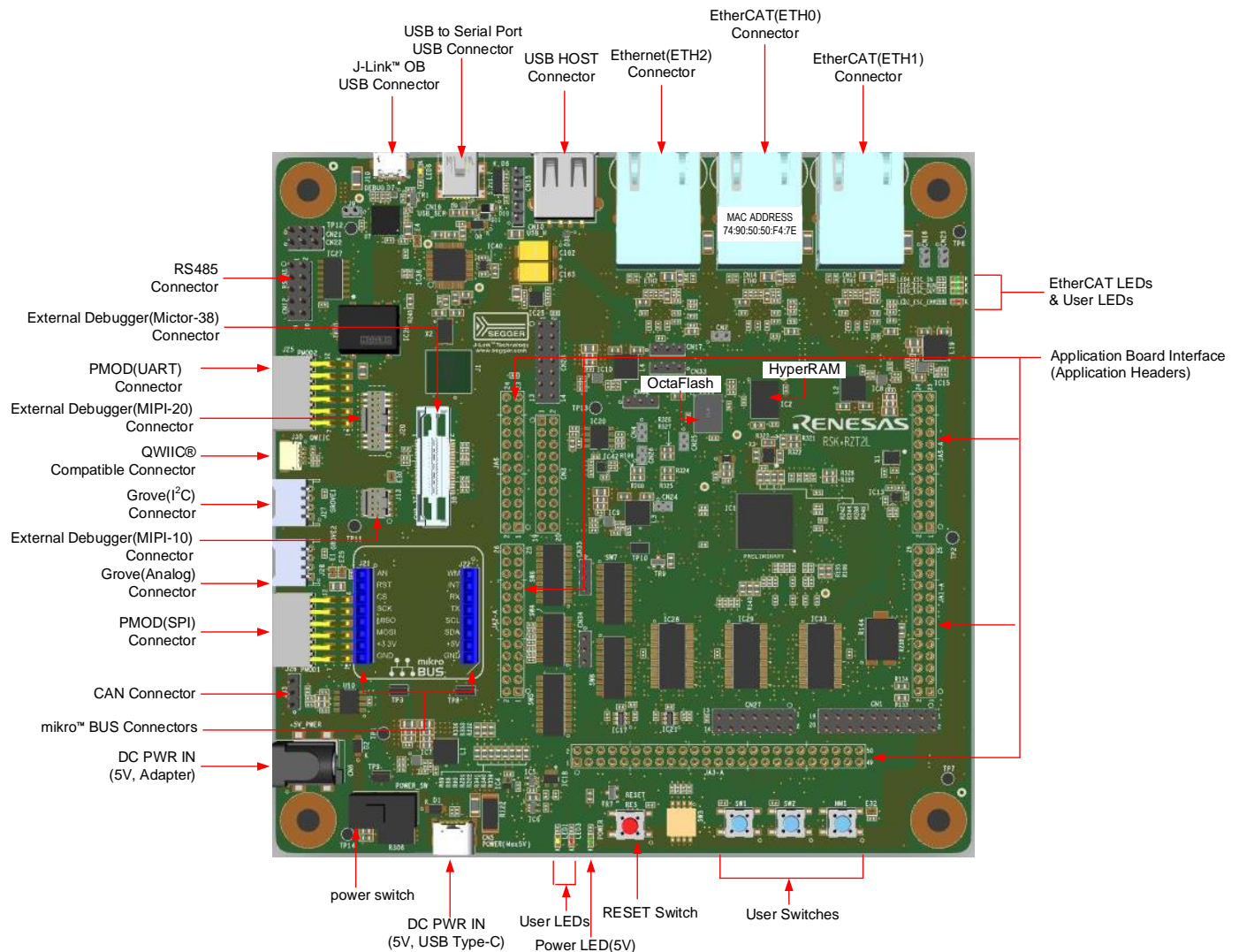


Quick Start Guide Renesas Starter Kit+ for RZ/T2L



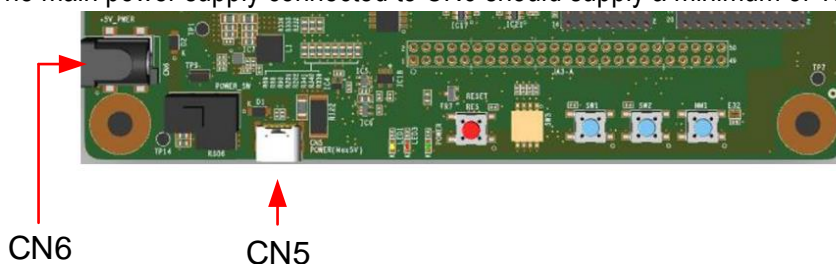
1. Connection

Supply power to the CPU board. The sample code is written to the CPU board at the time of shipment. When power is supplied, the program that blinks the User LEDs are executed.

1. Supply power to the CPU board.

This board has a USB Type-C connector (CN5) and an optional centre positive supply connector using a 2.0mm barrel power jack (CN6). Supply power to the CPU board from either CN5 or CN6.

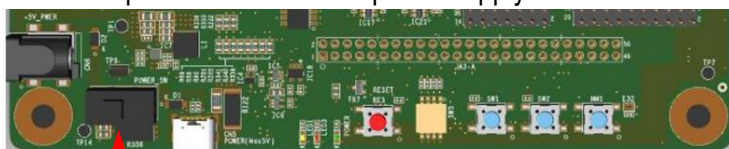
The main power supply connected to CN6 should supply a minimum of 15W to ensure full functionality.



Connector	Specifications and Supply Voltage
CN5	USB type-C VBUS (5-V DC)
CN6	2.0-mm center-positive barrel connector, 5-V DC input

* USB cable Type C (USB C to USB C) is included with the product.

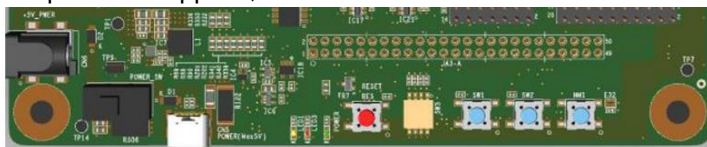
2. Turn on the power switch to start power supply.



power switch

OFF ↔ ON

3. After power is supplied, the User LEDs will blink.



User LEDs

2. Next Step

The user's manual and schematic of this RSK+ are available on the following website. The development environment, sample code, and application notes are also available for download.

<https://www.renesas.com/rskrzt2l>



After completing the initial check of '1. Connection', please erase the sample code that was written at the time of shipment before debugging the user code. The target to be erased is the Quad SPI flash memory. For the erasure method, please refer to the following document.

Document No. r01an6434 (RZ/T2, RZ/N2 Getting Started with Flexible Software Package)

Appendix. How to Erase Flash Memory

Device	Location	Controller	Address Space
Quad SPI flash memory (128 Mbits)	IC3	XSPI1_CS0	68000000h to 68FFFFFFh (16 Mbytes)

3. Support

Technical Contact Details

Global & Japan: <https://www.renesas.com/support/contact.html>

General information on Renesas microprocessors can be found on the Renesas website at:

<https://www.renesas.com/>

© 2025 Renesas Electronics Europe GmbH. All rights reserved

© 2025 Renesas Electronics Corporation. All rights reserved.

Website: <https://www.renesas.com/>

R20UT5235EJ0200

May.16.25