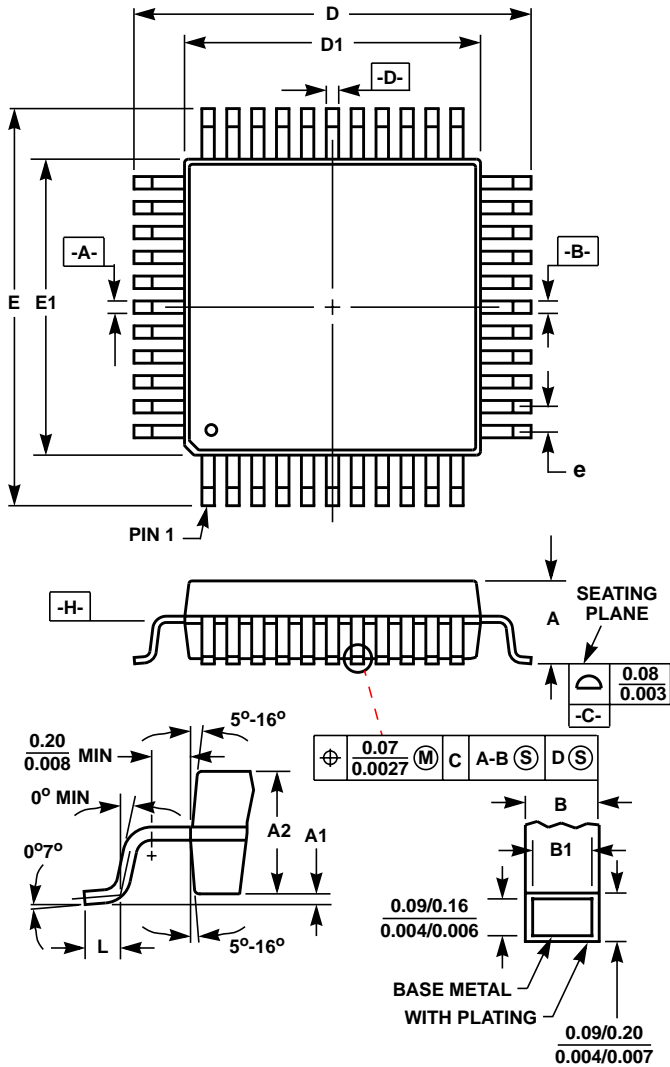


Metric Plastic Quad Flatpack Packages (MQFP/PQFP)



Q256.28x28

256 LEAD METRIC PLASTIC QUAD FLATPACK PACKAGE

| SYMBOL | INCHES     |       | MILLIMETERS |       | NOTES |
|--------|------------|-------|-------------|-------|-------|
|        | MIN        | MAX   | MIN         | MAX   |       |
| A      | -          | 0.146 | -           | 3.70  | -     |
| A1     | 0.002      | 0.010 | 0.05        | 0.25  | -     |
| A2     | 0.130      | 0.136 | 3.29        | 3.45  | -     |
| B      | 0.005      | 0.009 | 0.13        | 0.23  | 6     |
| B1     | 0.005      | 0.007 | 0.13        | 0.19  | -     |
| D      | 1.201      | 1.208 | 30.50       | 30.70 | 3     |
| D1     | 1.098      | 1.106 | 27.90       | 28.10 | 4, 5  |
| E      | 1.201      | 1.208 | 30.50       | 30.70 | 3     |
| E1     | 1.098      | 1.106 | 27.90       | 28.10 | 4, 5  |
| L      | 0.020      | 0.030 | 0.50        | 0.75  | -     |
| N      | 256        |       | 256         |       | 7     |
| e      | 0.0157 BSC |       | 0.40 BSC    |       | -     |

Rev. 1 12/98

NOTES:

1. Controlling dimension: MILLIMETER. Converted inch dimensions are not necessarily exact.
2. All dimensions and tolerances per ANSI Y14.5M-1982.
3. Dimensions D and E to be determined at seating plane  $\text{-C-}$ .
4. Dimensions D1 and E1 to be determined at datum plane  $\text{-H-}$ .
5. Dimensions D1 and E1 do not include mold protrusion. Allowable protrusion is 0.25mm (0.010 inch) per side.
6. Dimension B does not include dambar protrusion. Allowable dambar protrusion shall be 0.08mm (0.003 inch) total.
7. "N" is the number of terminal positions.
8. Dimensions conform to JEDEC outline MO-143 FB-2 Issue C.