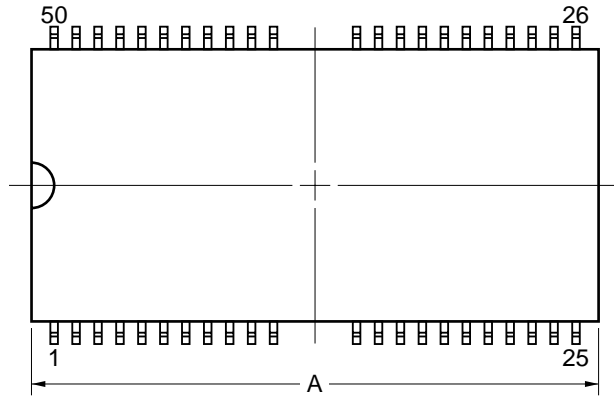
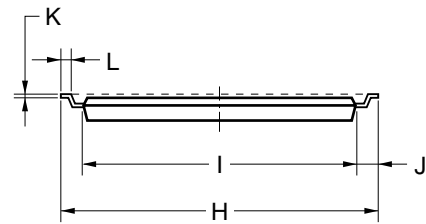
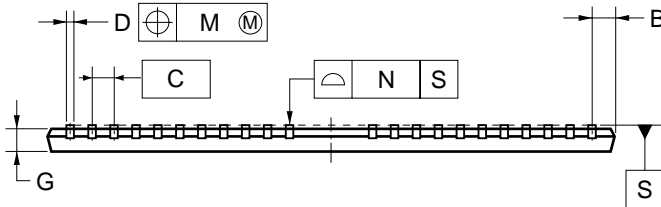
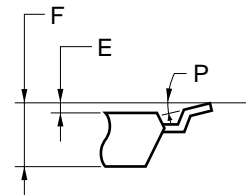


50-PIN PLASTIC TSOP(II) (10.16 mm (400))



detail of lead end



NOTE

Each lead centerline is located within 0.13 mm of its true position (T.P.) at maximum material condition.

ITEM	MILLIMETERS
A	$20.91^{+0.26}_{-0.05}$
B	1.0 MAX.
C	0.8 (T.P.)
D	$0.32^{+0.08}_{-0.07}$
E	0.1 ± 0.05
F	1.2 MAX.
G	0.97 ± 0.08
H	11.76 ± 0.2
I	10.16 ± 0.1
J	0.8 ± 0.2
K	$0.145^{+0.025}_{-0.015}$
L	0.5 ± 0.1
M	0.13
N	0.10
P	$3^{\circ} + 7^{\circ}_{-3^{\circ}}$

S50G5-80-7KF4-2