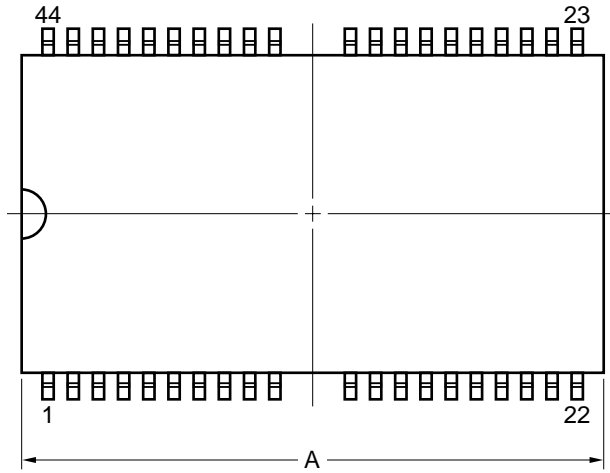
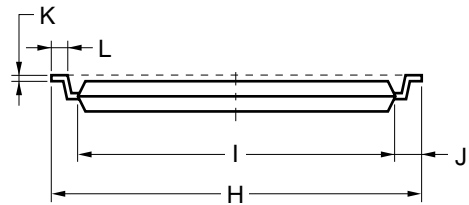
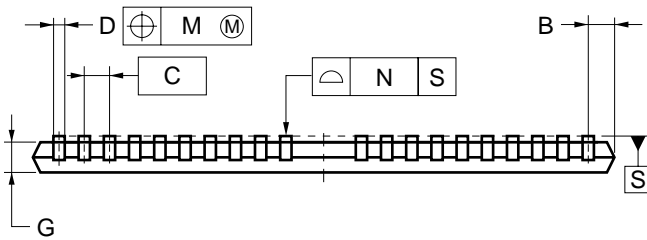
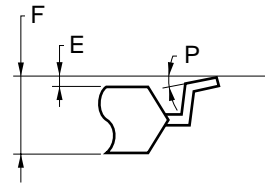


# 44-PIN PLASTIC TSOP(II) (10.16 mm (400))



detail of lead end



## NOTE

Each lead centerline is located within 0.13 mm of its true position (T.P.) at maximum material condition.

ITEM	MILLIMETERS
A	18.37 <sup>+0.26</sup> <sub>-0.05</sub>
B	0.93 MAX.
C	0.8 (T.P.)
D	0.32 <sup>+0.08</sup> <sub>-0.07</sub>
E	0.1±0.05
F	1.2 MAX.
G	0.97±0.08
H	11.76±0.2
I	10.16±0.1
J	0.8±0.2
K	0.145 <sup>+0.025</sup> <sub>-0.015</sub>
L	0.5±0.1
M	0.13
N	0.10
P	3 <sup>+7°</sup> <sub>-3°</sub>

S44G5-80-7KF4-2