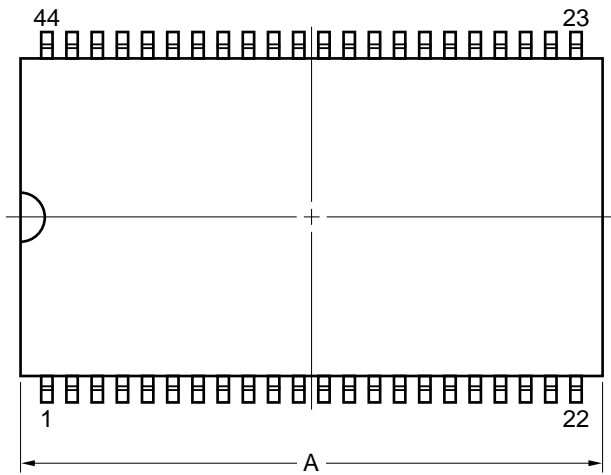
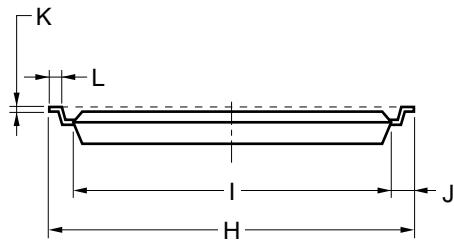
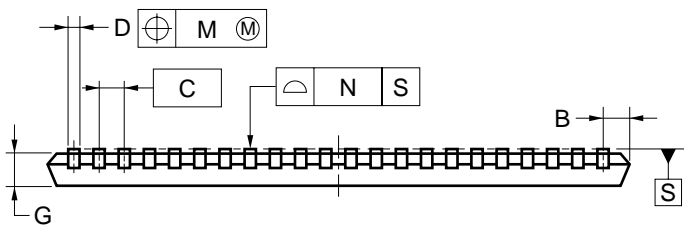
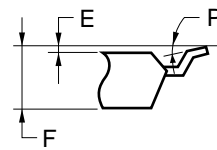


44-PIN PLASTIC TSOP (II) (10.16 mm (400))



detail of lead end



NOTE

Each lead centerline is located within 0.13 mm of its true position (T.P.) at maximum material condition.

| ITEM | MILLIMETERS |
|------|---|
| A | 18.37 ^{+0.26} _{-0.05} |
| B | 0.93 MAX. |
| C | 0.8 (T.P.) |
| D | 0.32 ^{+0.08} _{-0.07} |
| E | 0.1±0.05 |
| F | 1.07 ^{+0.13} _{-0.1} |
| G | 0.97 |
| H | 11.76±0.2 |
| I | 10.16±0.1 |
| J | 0.8±0.2 |
| K | 0.145 ^{+0.025} _{-0.015} |
| L | 0.5±0.1 |
| M | 0.13 |
| N | 0.10 |
| P | 3° ^{+7°} _{-3°} |