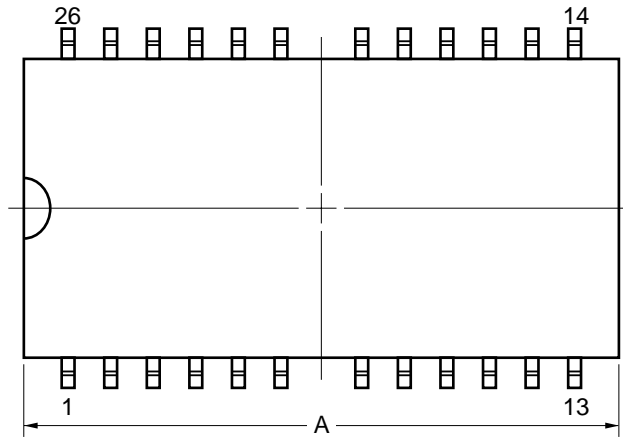
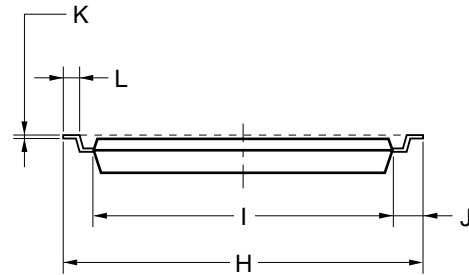
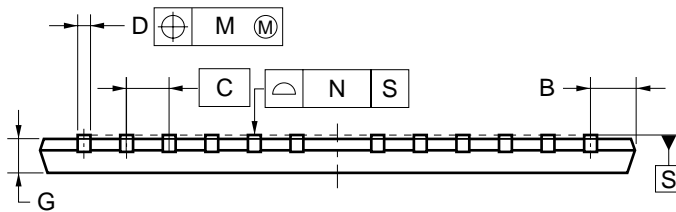
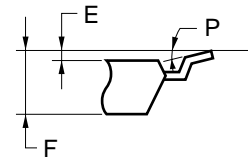


## 26-PIN PLASTIC TSOP(II) (7.62 mm (300))



detail of lead end



### NOTE

Each lead centerline is located within 0.21 mm of its true position (T.P.) at maximum material condition.

ITEM	MILLIMETERS
A	17.36 MAX.
B	1.06 MAX.
C	1.27 (T.P.)
D	$0.42^{+0.08}_{-0.07}$
E	$0.1 \pm 0.05$
F	1.2 MAX.
G	0.97
H	$9.22 \pm 0.2$
I	$7.62 \pm 0.1$
J	$0.8 \pm 0.2$
K	$0.145^{+0.025}_{-0.015}$
L	$0.5 \pm 0.1$
M	0.21
N	0.10
P	$3^{+7}_{-3}^{\circ}$

S26G3-50-7KD1-1