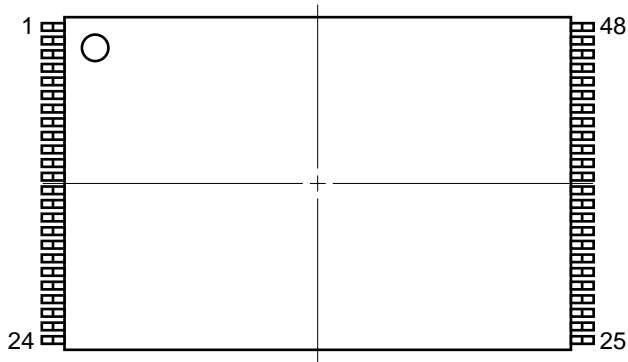
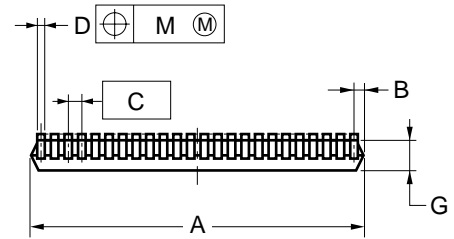
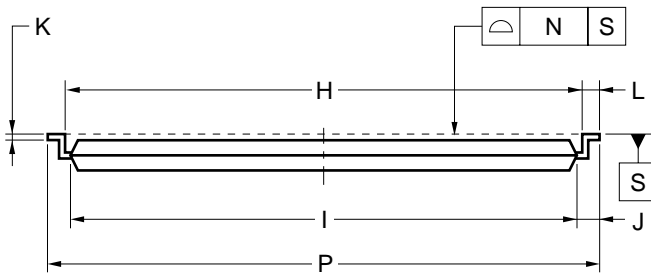
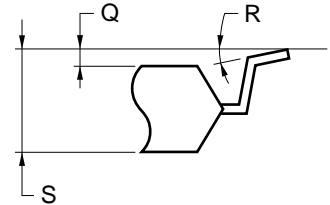


48-PIN PLASTIC TSOP (I) (12x18)



detail of lead end



NOTES

- Each lead centerline is located within 0.08 mm of its true position (T.P.) at maximum material condition.
- "A" excludes mold flash. (Includes mold flash : 12.4 mm MAX.)

ITEM	MILLIMETERS
A	12.0±0.1
B	0.45 MAX.
C	0.5 (T.P.)
D	0.22 ^{+0.08} _{-0.07}
G	0.97
H	17.0±0.2
I	16.4±0.1
J	0.8±0.2
K	0.145 ^{+0.03} _{-0.055}
L	0.5±0.1
M	0.08
N	0.10
P	18.0±0.2
Q	0.05±0.05
R	2° ^{+4°} _{-2°}
S	1.02±0.08

S48GY-50-MKH-4