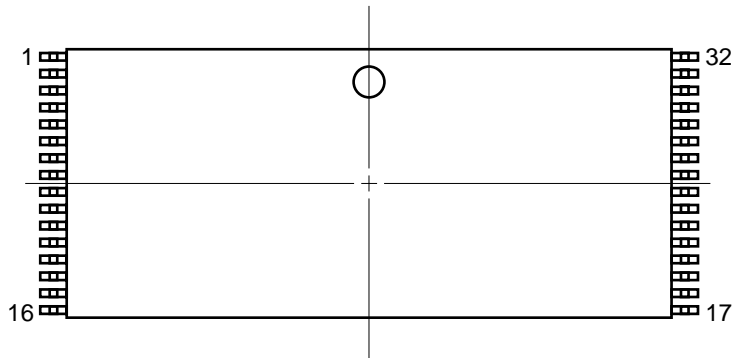
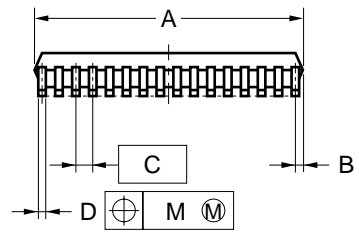
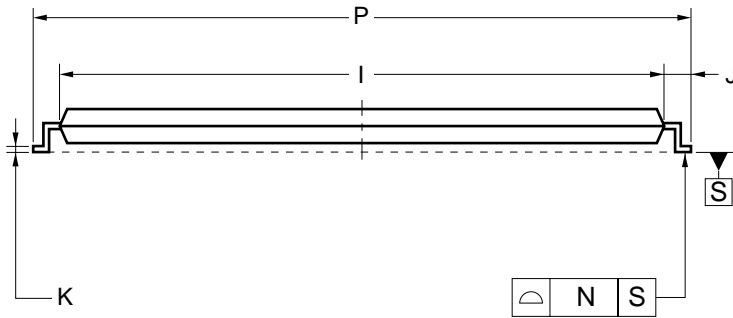
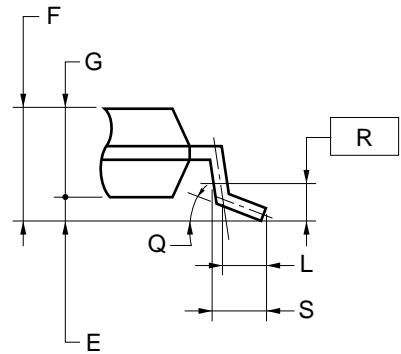


## 32-PIN PLASTIC TSOP(I) (8x20)



detail of lead end



### NOTES

- Each lead centerline is located within 0.10 mm of its true position (T.P.) at maximum material condition.
- "A" excludes mold flash. (Includes mold flash : 8.3 mm MAX.)

ITEM	MILLIMETERS
A	8.0±0.1
B	0.45 MAX.
C	0.5 (T.P.)
D	0.22±0.05
E	0.1±0.05
F	1.2 MAX.
G	0.97±0.08
I	18.4±0.1
J	0.8±0.2
K	0.145±0.05
L	0.5
M	0.10
N	0.10
P	20.0±0.2
Q	3° <sup>+5°</sup> -3°
R	0.25
S	0.60±0.15

S32GZ-50-KJH1-2