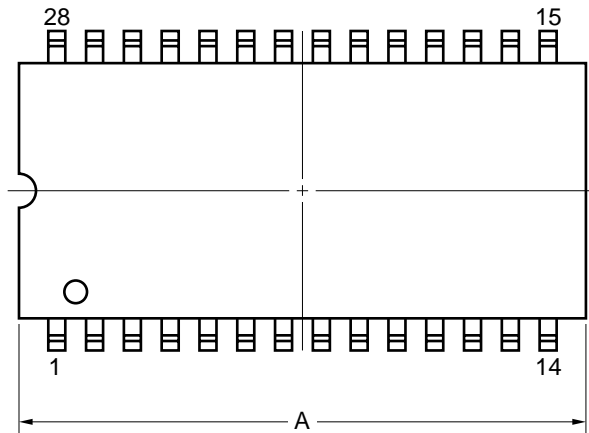
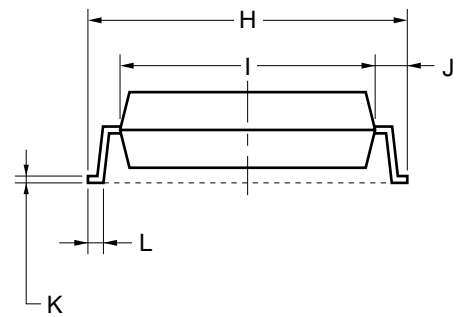
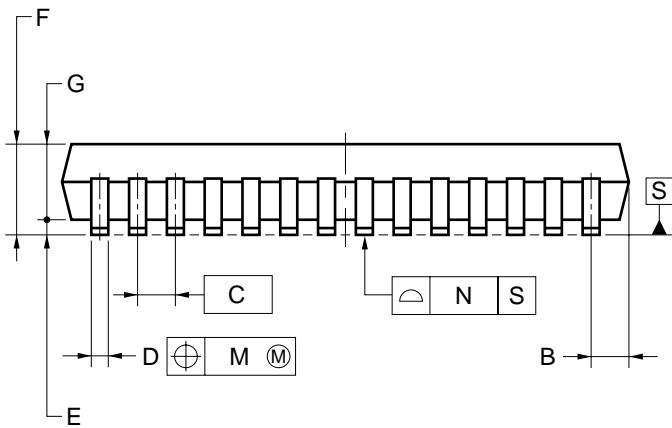
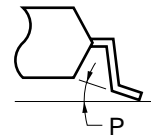


28-PIN PLASTIC SOP (11.43 mm (450))



detail of lead end



NOTE

Each lead centerline is located within 0.12 mm of its true position (T.P.) at maximum material condition.

ITEM	MILLIMETERS
A	$18.0^{+0.6}_{-0.05}$
B	1.27 MAX.
C	1.27 (T.P.)
D	$0.42^{+0.08}_{-0.07}$
E	0.2 ± 0.1
F	2.95 MAX.
G	2.55 ± 0.1
H	11.8 ± 0.3
I	8.4 ± 0.1
J	1.7 ± 0.2
K	0.22 ± 0.05
L	0.7 ± 0.2
M	0.12
N	0.10
P	$3^{\circ+7^{\circ}}_{-3^{\circ}}$

P28GU-50-450A-4