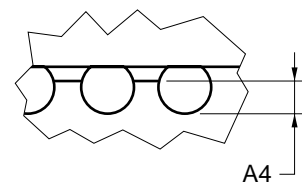
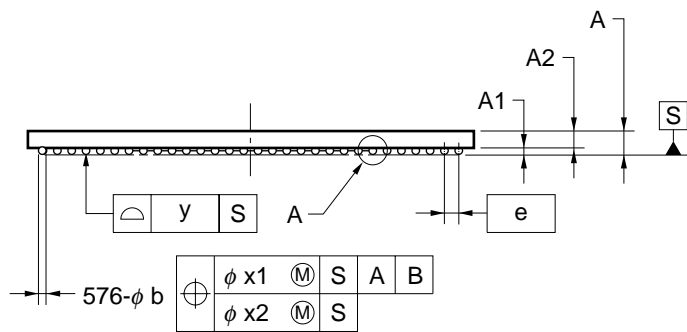
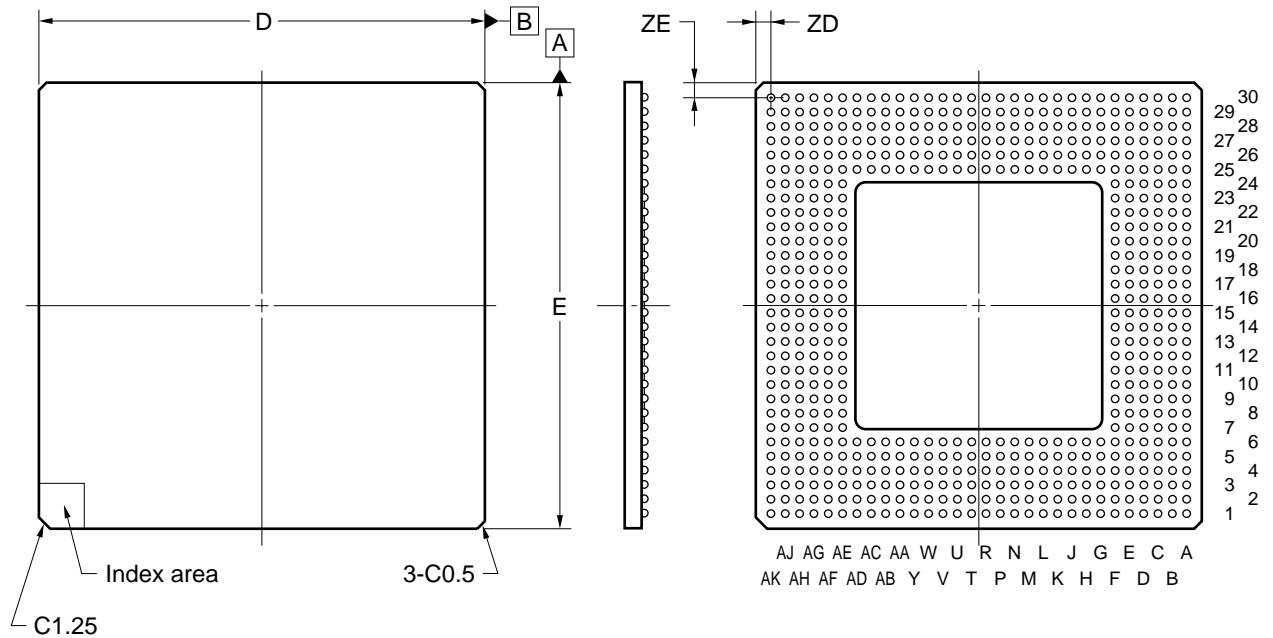


576-PIN PLASTIC BGA (CAVITY DOWN ADVANCED TYPE) (40x40)



detail of A part

| ITEM | MILLIMETERS |
|------|-------------|
| D | 40.0±0.2 |
| E | 40.0±0.2 |
| e | 1.27 |
| A | 2.50±0.30 |
| A1 | 0.60±0.10 |
| A2 | 1.90 |
| A4 | 0.25 MIN. |
| b | 0.75±0.15 |
| x1 | 0.30 |
| x2 | 0.15 |
| y | 0.20 |
| ZD | 1.585 |
| ZE | 1.585 |

P576S9-127-H6-1