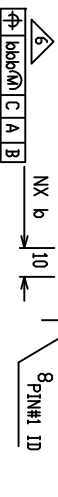
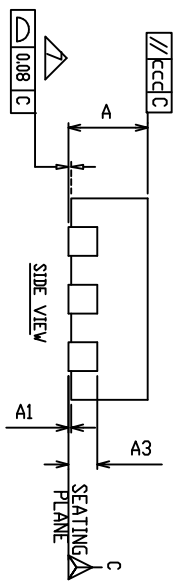
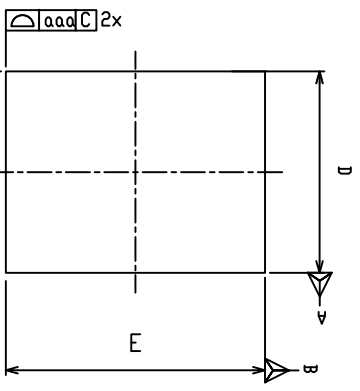


REVISIONS			
REV	DESCRIPTION	DATE	APPROVED
00	INITIAL RELEASE	03/3/08	RC
01	COMBINE POD & LAND PATTERN	09/03/13	KS



COMMON DIMENSION			
TOLERANCE OF FORM AND POSITION			
aaa	0.15		
bbb	0.10		
ccc	0.10		

COMMON DIMENSION			
SYMBOL	UT - Ultra Thin		
	MIN	NDH	MAX
A	0.51	0.55	0.60
A1	0.00		0.05
A2		0.15 ref	
NOTES	1, 2	1, 2	1, 2

Summary Table			
Lead Pitch	Lead Count	Body Size	Pin #1 ID
0.40	10	140X180	R014

Variation Table			
Symbol	UT/UR-1		Max
D RSC	1.40		
E RSC	1.80		
MIN	0.15		
NDH	0.20		
MAX	0.25		
N	10		3
ND	3		5
NE	2		5
NOTES	-		
PAD DESIGN	-		

NOTE:

1. Dimensioning and tolerancing conform to ASME Y14.5M-1994.
2. All dimensions are in millimeters; angles are in degrees(\260).
3. N is the total number of terminals.

4. The location of the terminal #1 identifier and terminal numbering convention conforms to JEDEC publication 95 SPP-002.

5. ND and NE refer to the number of terminals on each D and E side respectively.

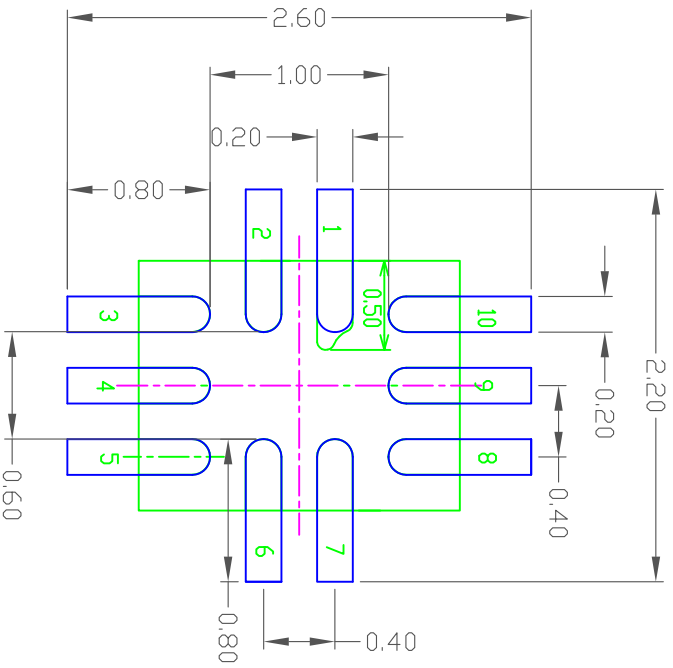
6. Dimension b applies to metallized terminal and is measured between 0.15mm and 0.30mm from the terminal tip. If the terminal has the optional radius on the other end of the terminal, the dimension b should not be measured in that radius area.

7. Coplanarity applies to the terminals and all other bottom surface metallization.


8. Drawing shown are for illustration only.

TOLERANCES UNLESS SPECIFIED DECIMAL ANGULAR ±1°			6024 Silver Creek Valley Road San Jose CA 95138 PHONE: (408) 284-8200 FAX: (408) 284-8591	
APPROVALS	DATE		TITLE ND/NDG10 PACKAGE OUTLINE	
DRAWN	03/3/08	1.4 x 1.8 mm BODY		
CHECKED		0.40 mm PITCH QFN		
SIZE C		DRAWING No.	REV 01	
DO NOT SCALE DRAWING		PSC-4214	SHEET 1 OF 2	

REVISIONS			
REV	DESCRIPTION	DATE	APPROVED
00	INITIAL RELEASE	03/3/08	RC
01	COMBINE POD & LAND PATTERN	09/03/13	KS



- NOTES:
1. ALL DIMENSION ARE IN mm. ANGLES IN DEGREES.
 2. TOP DOWN VIEW, AS VIEWED ON PCB.
 3. COMPONENT OUTLINE SHOW FOR REFERENCE IN GREEN.
 4. LAND PATTERN IN BLUE, NSMD PATTERN ASSUMED.
 5. LAND PATTERN RECOMMENDATION PER IPC-7351B, GENERIC REQUIREMENT FOR SURFACE MOUNT DESIGN AND LAND PATTERN.

TOLERANCES UNLESS SPECIFIED		ANGULAR ±1°		 IDT ™ 6024 Silver Creek Valley Road San Jose CA 95138 PHONE: (408) 284-8200 FAX: (408) 284-8591 www.idt.com
DECIMAL	XXX±	ANGULAR	XXX±	
DRAWN	03/3/08	DATE		
CHECKED				
APPROVALS		TITLE		ND/NDG10 PACKAGE OUTLINE 1.4 x 1.8 mm BODY 0.40 mm PITCH QFN
SIZE	C	DRAWING No.	PSC-4214	
DO NOT SCALE DRAWING			REV	01
				SHEET 2 OF 2