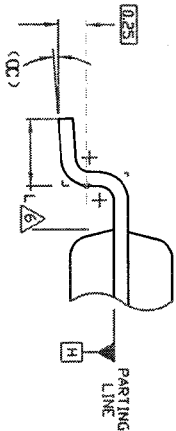
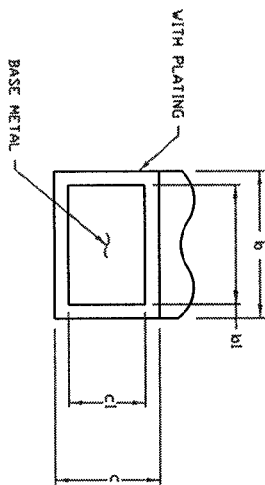
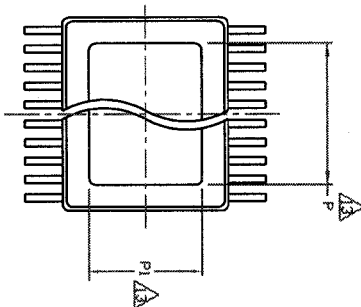
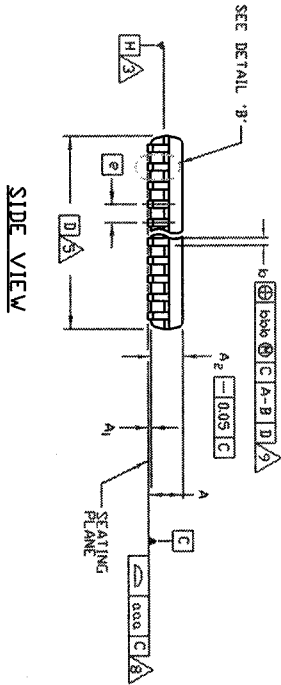
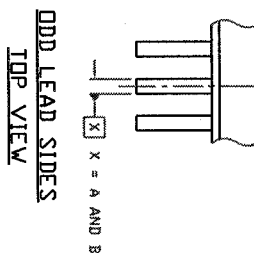
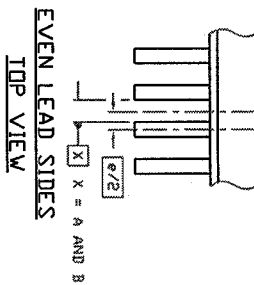
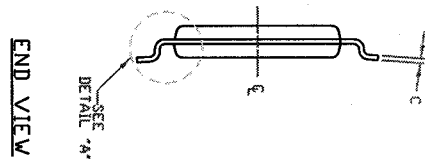
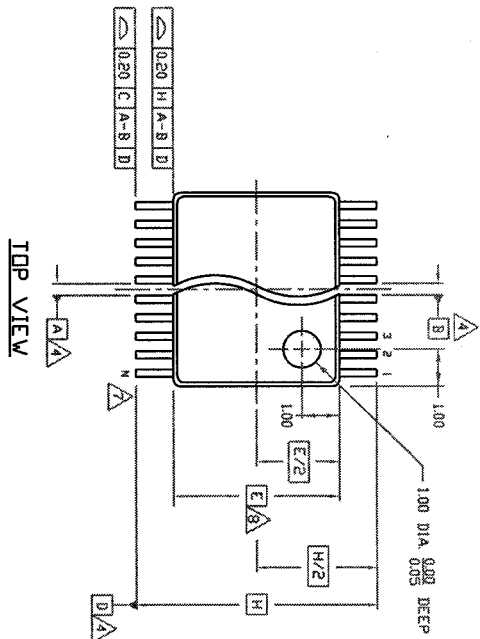
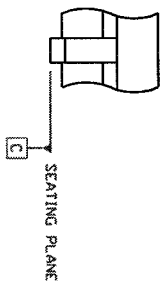



REVISIONS				
DCN	REV	DESCRIPTION	DATE	APPROVED
	00	INITIAL RELEASE	04/23/00	RT
	01	ADDED P-AD TO LAND PATTERN	11/30/00	PKP



DETAIL 'A'
SCALE: 30/1



DETAIL 'B'
SCALE: 30/1
BARBAR PROTRUSION

TOLERANCES UNLESS SPECIFIED DECIMAL ANGULAR X2 .1 5° X.1 .05 X.02 .025 X.02 .025		 Integrated Device Technology, Inc. 2975 Serrano Way, Santa Clara, CA 95054 PHONE: (408) 777-0110 FAX: (408) 482-8674 WWW: www.idt.com TWK: 910-338-2070
TITLE DW48 PACKAGE OUTLINE 6.10 mm BODY, 0.5 mm PITCH TSSOP	DATE 4/22/00	
DRAWN PZ/B	CHECKED PZ/B	
SIZE C	DRAWING NO. PSC-4092	
DO NOT SCALE DRAWING		SHEET 1 OF 2

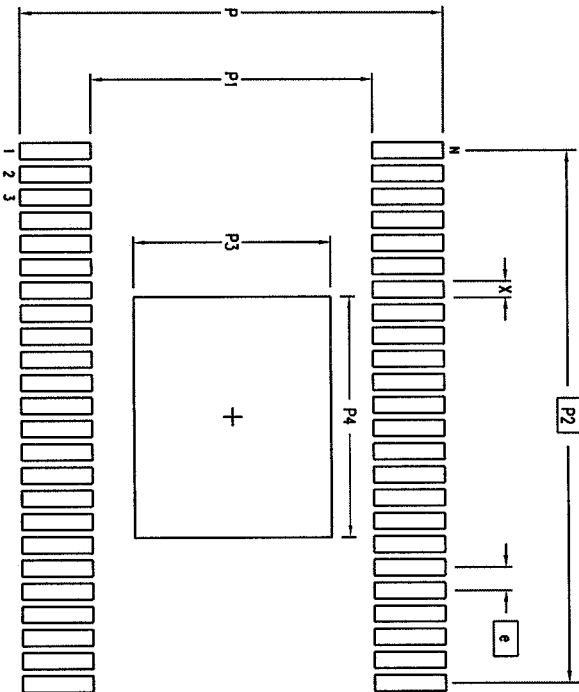
ALL DIMENSIONS IN MILLIMETERS

JEDEC VARIATION ED			
	MIN.	NOM.	MAX.
A	0.05	0.15	1.10
A ₁	0.85	0.90	0.95
A ₂	0.85	0.90	0.95
0.00	0.10	0.10	0.27
b	0.17	0.20	0.23
b ₁	0.17	0.20	0.23
b ₂	0.08	0.08	0.28
c	0.09	0.127	0.16
d	12.40	12.50	12.60
e	6.00	6.10	6.20
e	0.50 BSC		
h	8.10 BSC		
l	0.50	0.60	0.75
n	48		
α	0°	—	8°

NOTES:

- DIE THICKNESS ALLOWABLE IS 0.279±0.0127 (0.110±0.005 INCHES)
 - DIMENSIONING & TOLERANCES PER ASME Y14.5M-1994.
- ▲ DATUM PLANE H LOCATED AT MOLD PARTING LINE AND COINCIDENT WITH LEAD, WHERE LEAD EXITS PLASTIC BODY AT BOTTOM OF PARTING LINE.
 - ▲ DATUMS A-B AND D TO BE DETERMINED WHERE CENTERLINE BETWEEN LEADS EXITS PLASTIC BODY AT DATUM PLANE H.
 - ▲ 'D' & 'E' ARE REFERENCE DATUMS AND DO NOT INCLUDE MOLD FLASH OR PROTRUSIONS, AND ARE MEASURED AT THE BOTTOM PARTING LINE. MOLD FLASH OR PROTRUSIONS SHALL NOT EXCEED 0.15mm ON D AND 0.25mm ON E PER SIDE.
 - ▲ DIMENSION IS THE LENGTH OF TERMINAL FOR SOLDERING TO A SUBSTRATE.
 - ▲ TERMINAL POSITIONS ARE SHOWN FOR REFERENCE ONLY.
 - ▲ FORMED LEADS SHALL BE PLANAR WITH RESPECT TO ONE ANOTHER WITHIN 0.076mm AT SEATING PLANE.
 - ▲ THE LEAD WIDTH DIMENSION DOES NOT INCLUDE DAMBAR PROTRUSION. ALLOWABLE DAMBAR PROTRUSION SHALL BE 0.08mm TOTAL IN EXCESS OF THE LEAD WIDTH DIMENSION AT MAXIMUM MATERIAL CONDITION. DAMBAR CANNOT BE LOCATED ON THE LOWER RADIUS OR THE FOOT. MINIMUM SPACE BETWEEN PROTRUSIONS AND AN ADJACENT LEAD TO BE 0.10mm FOR 0.65mm PITCH, 0.08mm FOR 0.50mm PITCH AND 0.07mm FOR 0.40mm PITCH PACKAGES.
 - ▲ SEE DETAIL 'B' AND SECTION 'C-C'.
 - ▲ SECTION 'C-C' TO BE DETERMINED AT 0.10 TO 0.25 MM FROM THE LEAD TIP.
- CONTROLLING DIMENSION: MILLIMETERS.
 - THIS PART IS COMPLIANT WITH JEDEC SPECIFICATION MG-153, VARIATION ED.
 - DIMENSIONS 'P' AND 'P1' ARE THERMALLY ENHANCED VARIATIONS. VALUES SHOWN ARE MAXIMUM SIZE OF EXPOSED PAD WITHIN LEAD COUNT AND BODY SIZE. END USER SHOULD VERIFY AVAILABLE SIZE OF EXPOSED PAD FOR SPECIFIC DEVICE APPLICATION.

LAND PATTERN DIMENSIONS



	MIN	MAX
P	8.90	9.10
P1	5.90	6.10
P2	11.50	BSC
P3	4.25	4.35
P4	5.25	5.35
X	.30	.40
e	.50	BSC
N	48	

REVISIONS				
DCN	REV	DESCRIPTION	DATE	APPROVED
00		INITIAL RELEASE	04/23/00	RT
01		ADDED ePAD TO LAND PATTERN	11/30/00	PKY

TOLERANCES UNLESS SPECIFIED

DECIMAL ANGULAR

X.1 .05

X.2 .025

X.3 .025

APPROVALS DATE

DRAWN PXP/DP 4/23/00

CHECKED

INTEGRATED DEVICE TECHNOLOGY, Inc.
2975 Steiner Way, Santa Clara, CA 95054
Phone: (408) 727-0110 FAX: (408) 432-8674 TWR: 910-338-2070

Integrated Device Technology, Inc.
2975 Steiner Way, Santa Clara, CA 95054
Phone: (408) 727-0110 FAX: (408) 432-8674 TWR: 910-338-2070

TITLE DW48 PACKAGE OUTLINE PITCH TSSOP

6.10 mm BODY, 0.5 mm PITCH

SIZE C DRAWING No. PSC-4092

DO NOT SCALE DRAWING

SHEET 2 OF 2