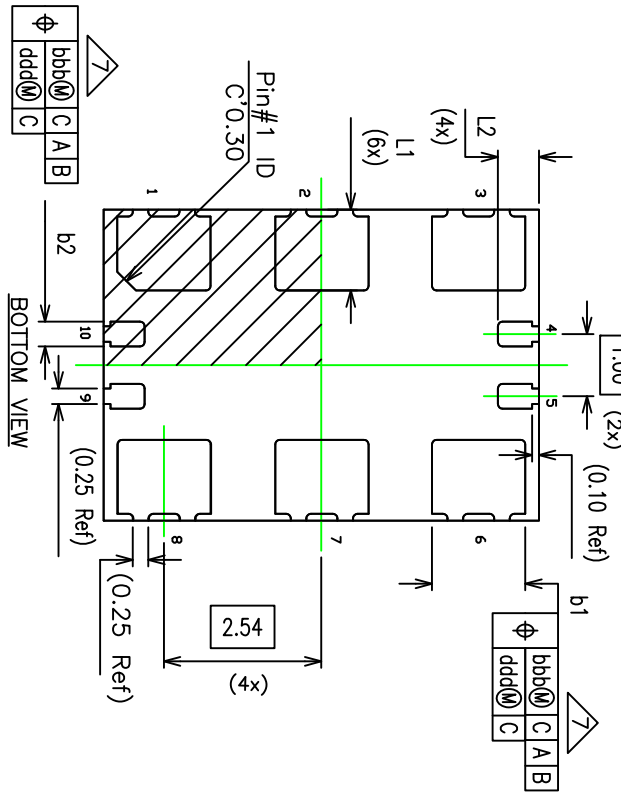
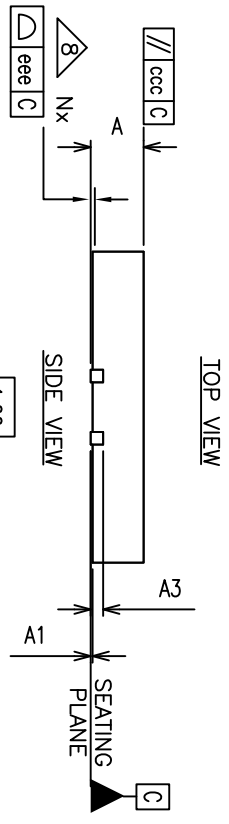
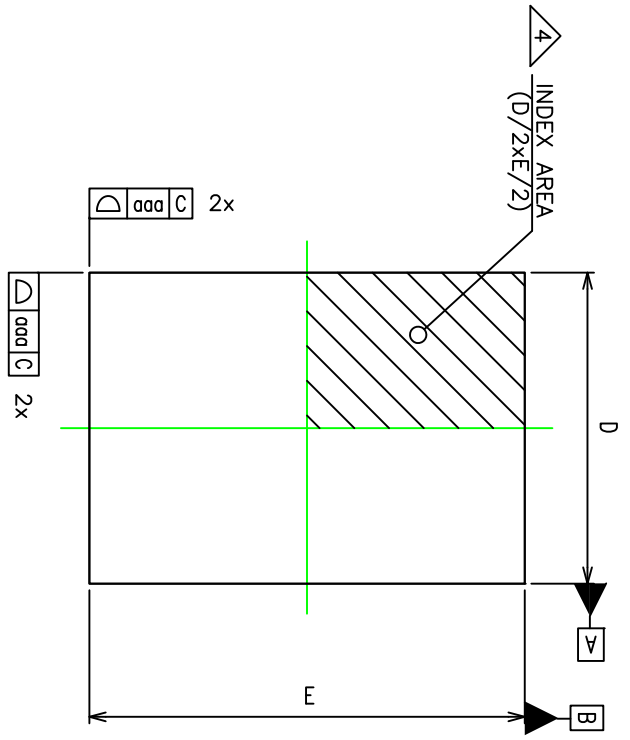


REVISIONS			
REV	DESCRIPTION	DATE	APPROVED
00	INITIAL RELEASE	09/28/11	DP
01	UPDATE USE CARSEM POD	12/13/12	E.YOON
02	COMBINE POD & LAND PATTERN	4/8/13	RAC
03	ADD NOTE RECOMMENDED LAND PATTERN	2/24/14	J.H



TOLERANCES UNLESS SPECIFIED		DECIMAL ANGULAR	
XXX	±	XXXXX	
APPROVALS	DATE	TITLE	SIZE
DRAWN 3/2%	06/14/11	CU/CUG10 PACKAGE OUTLINE	C
CHECKED		5.0 x 7.0 x 0.85mm BODY	REV
		2.540 Lead Pitch, 0.80 Half Etch	03
DRAWING No. PSC-4379		DO NOT SCALE DRAWING	
SHEET 1 OF 3			


**8024 Silver Creek Valley Road**  
 San Jose, CA 95138  
 PHONE: (408) 294-8200  
 FAX: (408) 294-8591  
[www.idt.com](http://www.idt.com)

REVISIONS			
REV	DESCRIPTION	DATE	APPROVED
00	INITIAL RELEASE	09/24/11	DP
01	UPDATE USE CARSEM POD	12/13/12	E.YOON
02	COMBINE POD & LAND PATTERN	4/8/13	RAC
03	ADD NOTE RECOMMENDED LAND PATTERN	2/24/14	JH

Dimension Table				
Variation Symbol	Thickness : VL (VL5070–NJ1)			NOTE
	MIN	NOM	MAX	
A	0.80	0.85	0.90	
A1	0.00	0.02	0.05	
A3	0.203 Ref			
b1	1.45	1.50	1.55	7
b2	0.35	0.40	0.45	7
D	4.95	5.00	5.05	
E	6.95	7.00	7.05	
L1	1.25	1.30	1.35	
L2	0.60	0.65	0.70	
aaa	0.05			
bbb	0.10			
ccc	0.10			
ddd	0.05			
eee	0.08			
N	10			3
ND	3			5
NE	2			5
NOTES	1, 2			
LF DWG NO.	B–3033			
REV.	3			

NOTE:

1. Dimensioning and tolerancing conform to ASME Y14.5–2009.
2. All dimensions are in millimeters.
3. N is the total number of terminals.


⚠4 The location of the terminal #1 identifier and terminal numbering convention conforms to JEDEC publication 95 SPP–002.

5. ND and NE refer to the number of terminals on D and E side respectively.

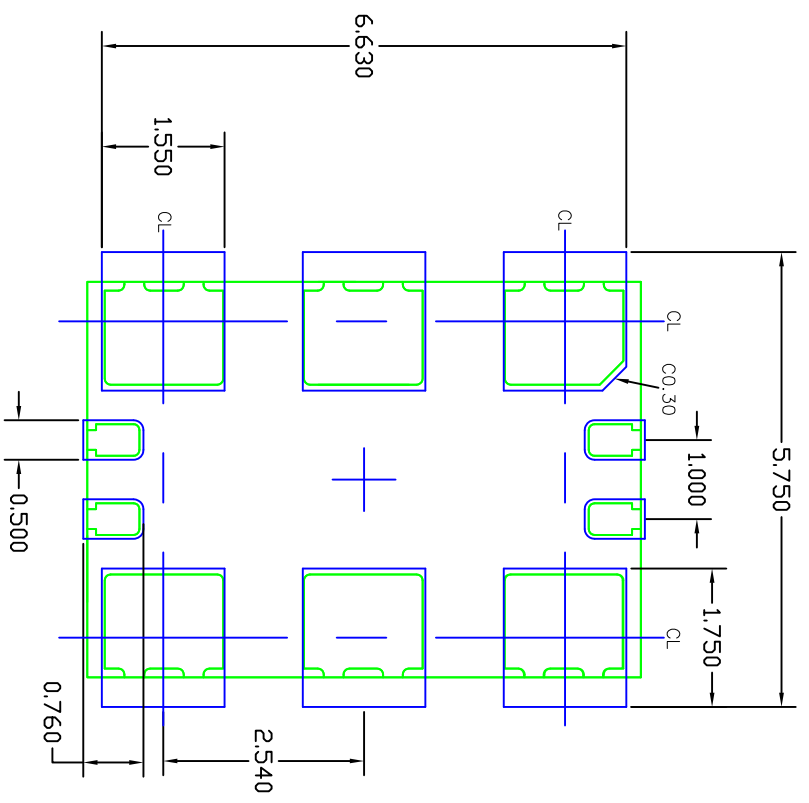
6. NU in the variation code refers to NON JEDEC REGISTERED.

⚠7 Dimension b applies to the metallized terminal. If the terminal has the optional radius on the other end of the terminal, dimension b should not be measured in that radius area.

⚠8 Coplanarity applies to the terminals and all other bottom surface metallization.


TOLERANCES UNLESS SPECIFIED DECIMAL ANGULAR XXX± ± XXX± ± XXX± ±		 6024 Silver Creek Valley Road San Jose, CA 95138 PHONE: (408) 284–8200 FAX: (408) 284–8591 www.IDT.com	
APPROVALS	DATE	TITLE	SIZE
3C2#	06/14/11	CJ/CUG10 PACKAGE OUTLINE	C
CHECKED		5.0 x 7.0 x 0.85mm BODY 2.540 Lead Pitch, 0.80 Half Etch	REV
		DRAWING No. PSC–4379	03
DO NOT SCALE DRAWING			SHEET 2 OF 3

REVISIONS			
REV	DESCRIPTION	DATE	APPROVED
00	INITIAL RELEASE	09/28/11	DP
01	UPDATE USE CARSEM POD	12/13/12	E.YOON
02	COMBINE POD & LAND PATTERN	4/8/13	RAC
03	ADD NOTE RECOMMENDED LAND PATTERN	2/24/14	J.H



RECOMMENDED LAND PATTERN DIMENSION

- NOTES:
1. ALL DIMENSION ARE IN mm. ANGLES IN DEGREES.
  2. TOP DOWN VIEW, AS VIEWED ON PCB.
  3. COMPONENT OUTLINE SHOW FOR REFERENCE IN GREEN.
  4. LAND PATTERN IN BLUE. NSMD PATTERN ASSUMED.
  5. LAND PATTERN RECOMMENDATION PER IPC-7351B GENERIC REQUIREMENT FOR SURFACE MOUNT DESIGN AND LAND PATTERN.

TOLERANCES UNLESS SPECIFIED		 <b>IDT</b> 6024 Silver Creek Valley Road San Jose, CA 95138 Phone: (408) 284-8200 Fax: (408) 284-8591 <a href="http://www.idt.com">www.idt.com</a>
DECIMAL	ANGULAR	
±0.10	±0.5°	
DATE	APPROVALS	TITLE
09/14/11	302	CU/CUG10 PACKAGE OUTLINE
CHECKED		5.0 x 7.0 x 0.85mm BODY
		2.540 Lead Pitch, 0.80 Half Etch
SIZE	DRAWING No.	REV
C	PSC-4379	03
DO NOT SCALE DRAWING		SHEET 3 OF 3