

## RZ Ecosystem Partner Solution

# TMC WDR Converter SW



### Solution Summary

WDR (Wide Dynamic Range) is a technology to retouch/correct SDR images in high-contrast scenes, without generating blackouts and whiteouts. Since the dynamic range of a standard camera is limited, it is hard for one to capture high-contrast scenes properly, resulting in overexposure or underexposure. TMC developed a unique WDR technology to provide images that is easy to detect even with a general "object recognition algorithm", compatible with [RZ/G microprocessors](#).

### Features/Benefits

- TMC's original WDR engine improves the appearance of SDR images.
- TMC's original WDR engine uses a fast-operating algorithm that does not interfere with the operation of other applications, and therefore is ideal as a pre-process for object recognition by AI.
- Available with a configuration compatible with Gstreamer.

### Graphics

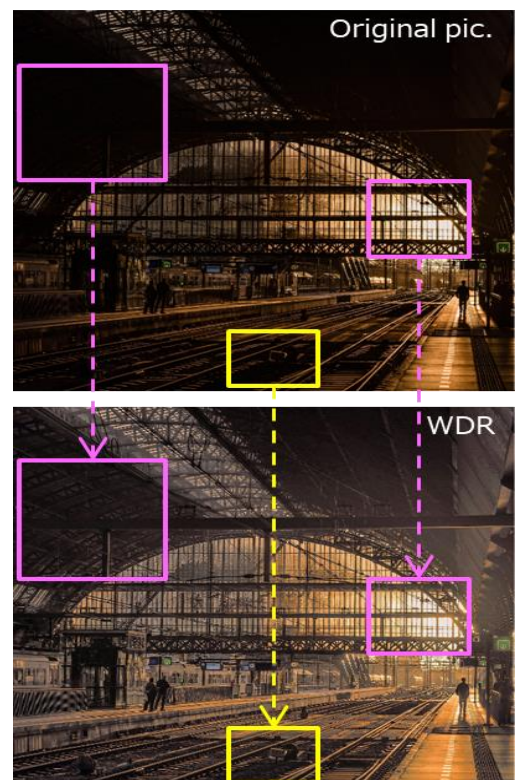
#### WDR Engine Configuration

- **Local Tone Mapping**  
Local tone mapping makes the dark areas brighter without generating whiteouts in originally bright areas.

- **Detail Enhancement**  
Detail Enhancement improves the sharpness of the entire image.

#### Target Markets and Applications

- Surveillance Camera
- Home Security
- Door Phone
- Inspection Machine



## Application Examples



Surveillance Camera



Door Phone



Home Security



Inspection Machine

## Information on evaluation software

- Evaluation software can be provided as a static library including Gstreamer.
- The evaluation software has a frame limit and the TMC logo.
- For more information, please feel free to contact us.

## Contact

Techno Mathematical Co., Ltd.

TEL: +81-3-3492-3633

Email: [info-sales@tmath.co.jp](mailto:info-sales@tmath.co.jp) URL: <https://www.tmath.co.jp/>