

CTA Supply	Low Flow	High Flow
CTA	X	X
VCC	X	

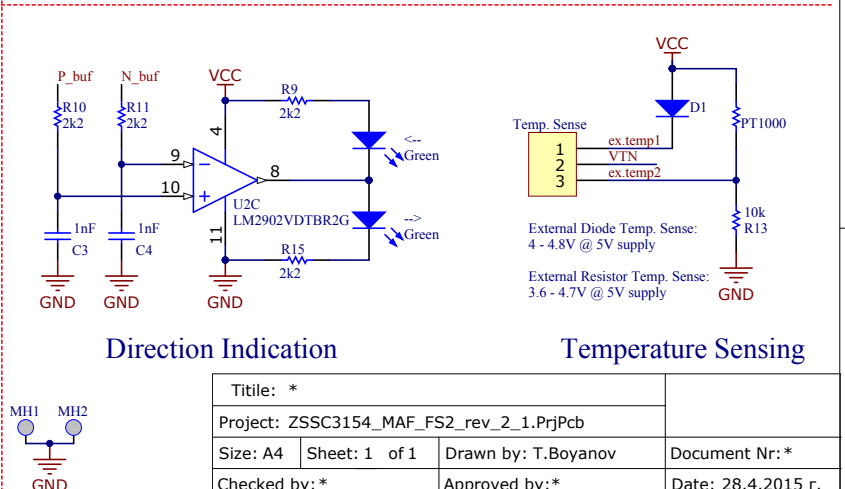
Signal P/N	Low Flow	High Flow
V_Out	X	X
Bridge	X	

Bridge Supply	Low Flow	High Flow
BR_T	X	
V_Out	X	X

Low Flow: 0 m/s to 3 m/s  
High Flow: 0 m/s to 100 m/s

Settings



Comment	Description	Designator	Footprint	LibRef	Quantity
Green	Typical INFRARED GaAs LED	-->, <--, Enable, Power	LED0805 G 3D	LED0	4
TPx1_red	Test Point single, black	5V	TP Red	TPx1_red	1
500R	Square Trimming Potentiometer 500R	Balance	POT4MM-2	RPot SM	1
V_Out/BR_T	Header, 3-Pin	Bridge Supply	HDR1x3_2.54	Header 3	1
TPx1_grn	Test Point single, black	BR_B, BR_T, CTA+, CTA-, N, P, V_Out	TP Green	TPx1_grn	7
1nF	CAP 1nF 25V ±1% 0805 (2012 Metric) Thickness 1mm SMD	C1, C2, C3, C4	CAPC0805(2012)100_N	CMP-1036-02963-1	4
S1M-13-F	Diode, 2-Pin SMA Package, RoHS	D1	DIOD-S1M-13-F-SMA-2_V	CMP-0639-00001-1	1
FS2T.0.1E.025	Thermal mass flow sensor FS2T.0.1E.025	FS2	FS2_TH - FlowChannel	FS2_L	1
TPx2	Test Popint	GND1, GND2	GND_Con2 - 1.2mm	TP x2	2
VCC/CTA	Header, 3-Pin	Heater Supply	HDR1x3_2.54	Header 3	1
Enable	Jumper 2p closed	J1	Header_f_2.54	Jumper_open	1
CTA	Jumper 2p closed	J2	Header_f_2.54	Jumper_open	1
Heater	Jumper 2p closed	J3	Header_f_2.54	Jumper_open	1
Mounting Hole	Mounting Hole	MH1, MH2	Test Pin single 4mm	Mounting Hole	2
Header 25X2	RECEPTACLE, 2.54MM, R/A DUAL, 50WAY	P1	HDR2X25	Header 25X2	1
PT1000	IST P1K0.0805.2P.B	PT1000	RESC0805(2012)_M	CMP-1013-00510-1	1
MMBTA05LT3G	NPN Silicon, SOT-23, Pb-Free	Q1	ONSC-SOT-23-3-318-08_V	CMP-1048-00614-1	1
2k2	2K2 0.125W 1% 0805 (2012 Metric) SMD	R1, R3, R9, R10, R11, R15	RESC0805(2012)_N	CMP-1013-00546-1	6
6k8	6K8 0.125W 1% 0805 (2012 Metric) SMD	R2	RESC0805(2012)_N	CMP-1013-00604-1	1
620R	620R 0.125W 1% 0805 (2012 Metric) SMD	R4	RESC0805(2012)_L	CMP-1013-00486-1	1
1M	1M 0.125W 1% 0805 (2012 Metric) SMD	R5	RESC0805(2012)_M	CMP-1013-00853-1	1
38R	38R 0.125W 1% 0805 (2012 Metric) SMD	R6	RESC0805(2012)_N	CMP-1013-00350-1	1
0R	Jumper 0805 (2012 Metric)	R7, R16, R17, R18	RESC0805(2012)_N	CMP-1013-00001-1	4
430R	430R 0.125W 5% 0805 (2012 Metric) SMD	R8	RESC0805(2012)_N	CMP-1013-00065-1	1
10k	10K 0.125W 1% 0805 (2012 Metric) SMD	R12, R13, R14	RESC0805(2012)_M	CMP-1013-00623-1	3
Low-[N]-High	Header, 3-Pin	Signal N	HDR1x3_2.54	Header 3	1
Low-[P]-High	Header, 3-Pin	Signal P	HDR1x3_2.54	Header 3	1
200R	Square Trimming Potentiometer 200R	Temp.Offset	POT4MM-2	RPot SM	1
Diode/PT1000	Header, 3-Pin	Temp. Sense	HDR1x3_2.54	Header 3	1
TLV27L1IDBVR	Operational Amplifier RR, 5-pin SOT23, RoHS	U1	TI-DBV5_N	TLV27L1IDBVR	1
LM2902VDTBR2G	Operational Amplifier, TSSOP, Pb-Free	U2	ONSC-TSSOP-14-948G-01	CMP-1310-00401-1	1

