





Integrated Device Technology, Inc.  
6024 Silver Creek Valley Road, San Jose, CA 95138

## PRODUCT/PROCESS CHANGE NOTICE (PCN)

### ATTACHMENT I - PCN #: TB0711-01

**PCN Type:** Packing Material

**Data Sheet Change:** None

**Detail of Change:** This notification is to advise our customers that IDT has qualified new shipping trays for 950 mils x 950 mils PQFP 132L products.

There is no change to the number of units per tray and tray dimensions but changes to the tray withstand temperature.

The new shipping trays have passed IDT's internal qualification requirements.

Customer may receive product shipped in the existing trays and new trays in one single shipment until the existing trays are depleted.

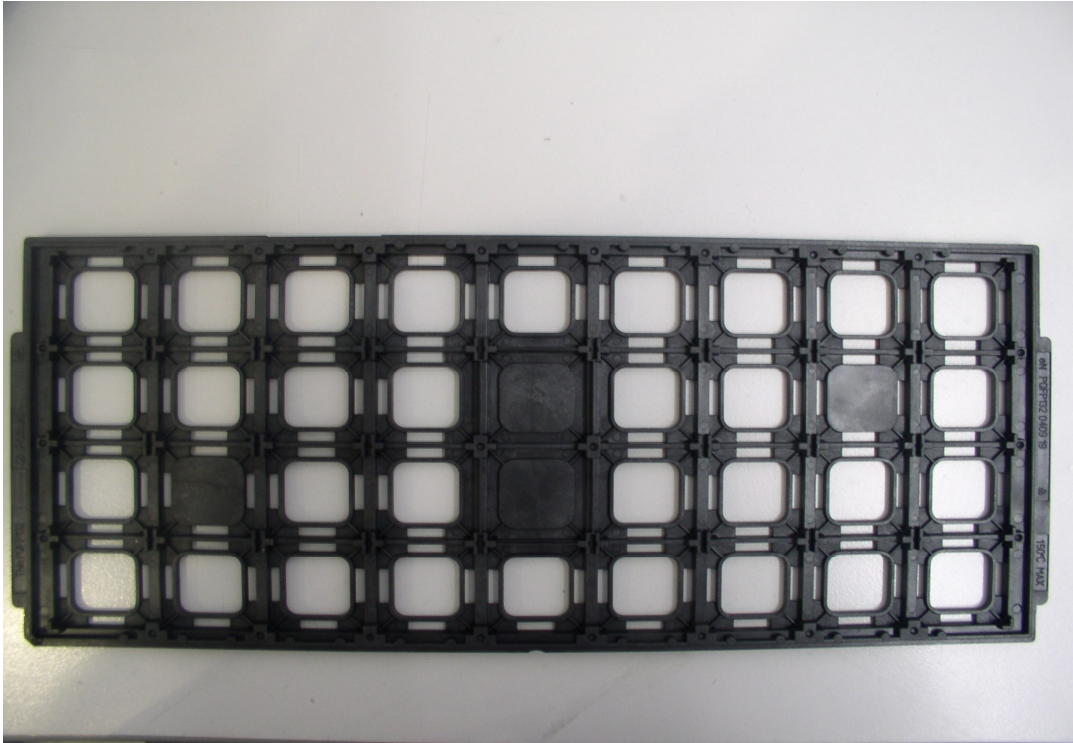
Description	Existing Shipping Tray	New Shipping Tray
Supplier	E-Pak	NK Tech
Supplier Part Number	eN PQFP 132 0409 19	TMHT-040901-01
IDT Part Number	P7-210-000	P7-227-000
Tray Matrix	4 X 9	4 X 9
Qty per Tray	36 units	36 units
Rating Temperature	150°C	135°C
Tray Material	MPPPO	PPE + CF
Pocket Size (WxL)	27.84 X 27.84 +/- 0.13 mm	28.09 X 28.09 +/- 0.13 mm
Tray Drawing Number	MSC-5706	MSC-5755



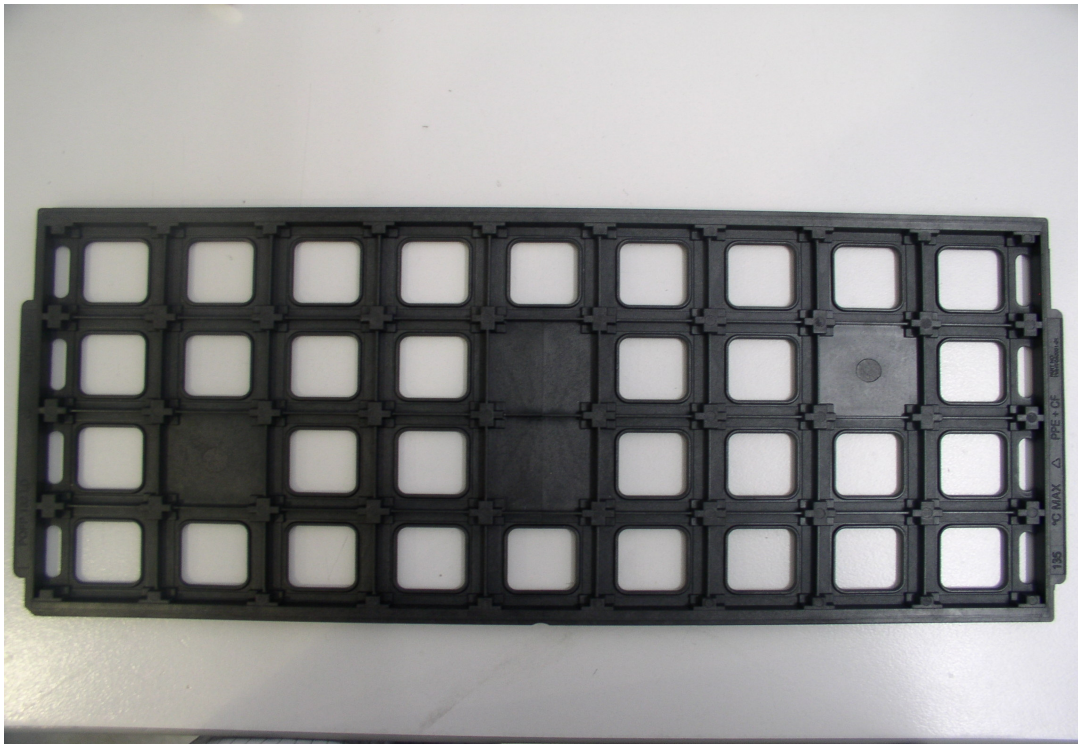
Integrated Device Technology, Inc.  
6024 Silver Creek Valley Road, San Jose, CA 95138

## PRODUCT/PROCESS CHANGE NOTICE (PCN)

### ATTACHMENT I - PCN #: TB0711-01



Existing Shipping Tray



New Shipping Tray



Integrated Device Technology, Inc.  
6024 Silver Creek Valley Road, San Jose, CA 95138

## PRODUCT/PROCESS CHANGE NOTICE (PCN)

### ATTACHMENT I - PCN #: TB0711-01

**Qualification Plan #:** BC07-07-01

**Qualification Test Plan and Result:**

Qualification Test and Conditions	Reject / Sample Size	Result
5 Feet Drop Test (6 drops, 1 drop per side @ standard packing)	0/4 trays (144 units)	Pass
Manufacturability (IC Fitting, Trim & Form Machine, Vision System, Test Handler)	0/5 trays	Pass
Visual/Mechanical (Chip, crack, pit, incomplete fill, contamination, burr on tray pocket)	0/5 trays	Pass
Static Electricity Test (100 volts max)	0/5 trays	Pass
Surface Resistivity Test ( $1 \times 10^5$ to $1 \times 10^{11}$ ohms per sq)	0/5 trays	Pass
Dimensional (critical dimensions based on drawing)	0/5 trays	Pass
Bake Test (135°C@24 hours, bundled and singulated methods)	0/8 trays	Pass



Integrated Device Technology, Inc.  
6024 Silver Creek Valley Road, San Jose, CA 95138

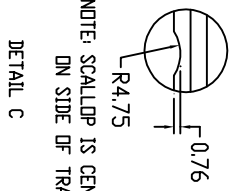
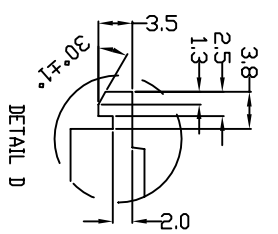
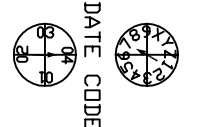
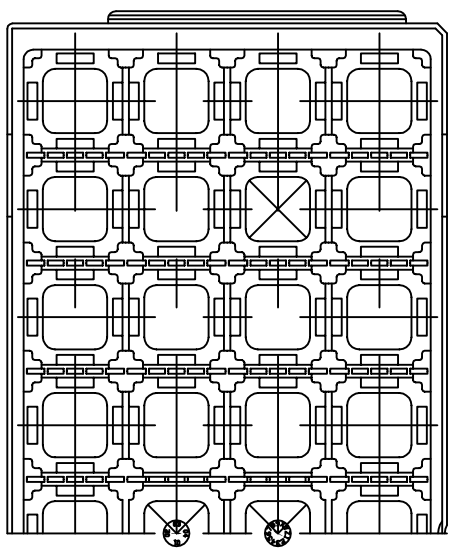
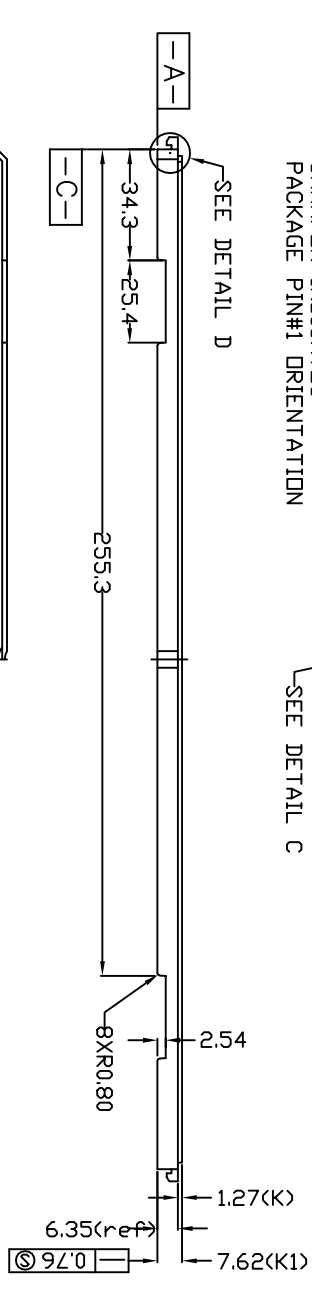
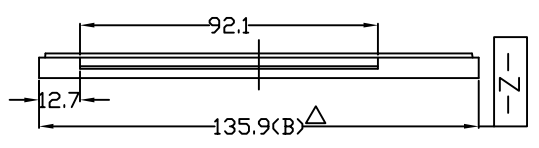
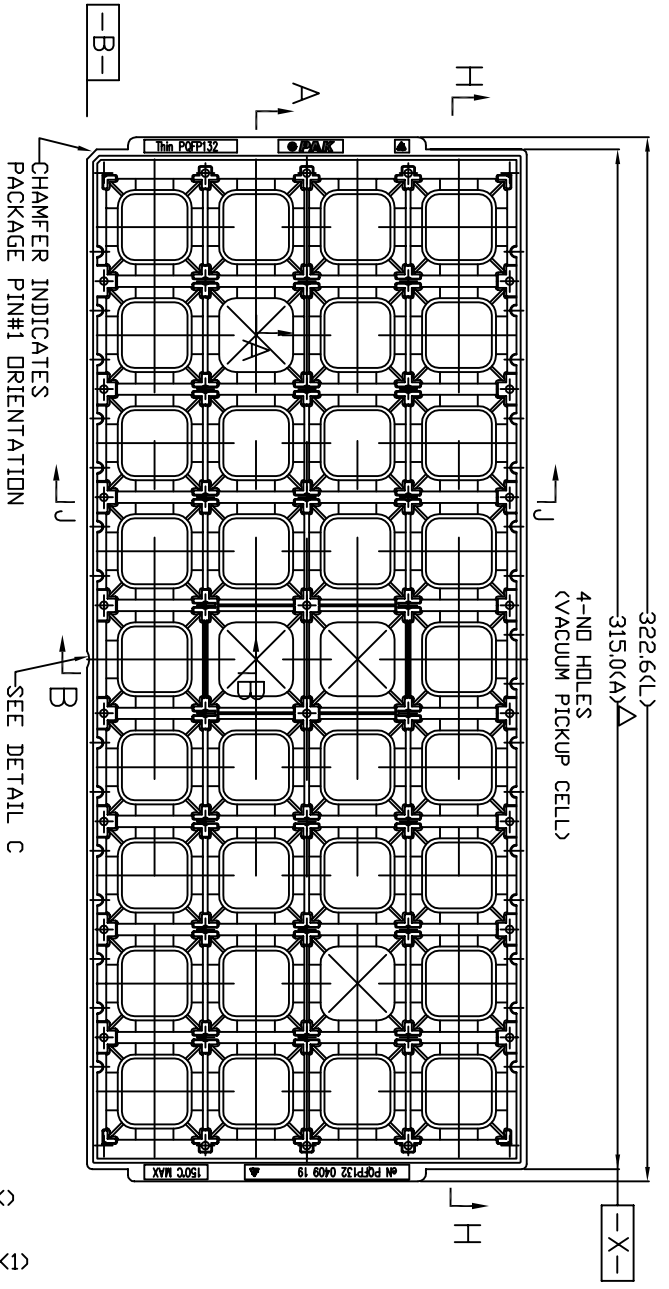
## PRODUCT/PROCESS CHANGE NOTICE (PCN)

### ATTACHMENT II - PCN #: TB0711-01

#### Affected Part Number

IDT Part Number	IDT Part Number	IDT Part Number	IDT Part Number
IDT7050L25PQF	IDT723613L15PQF	IDT723651L20PQF	IDT72V3614L15PQF
IDT7050L35PQF	IDT723613L20PQF	IDT723651L20PQFI	IDT72V3614L20PQF
IDT7050S25PQF	IDT723613L20PQFI	IDT723652L12PQF	IDT72V3622L10PQF
IDT7050S35PQF	IDT723614L15PQF	IDT723652L15PQF	IDT72V3622L15PQF
IDT7052L20PQF	IDT723614L20PQF	IDT723662L12PQF	IDT72V3631L15PQF
IDT7052L20PQFG	IDT723614L20PQFI	IDT723662L15PQF	IDT72V3631L20PQF
IDT7052L25PQF	IDT723622L12PQF	IDT723672L12PQF	IDT72V3632L10PQF
IDT7052L25PQFI	IDT723622L15PQF	IDT723672L15PQF	IDT72V3632L15PQF
IDT7052L35PQF	IDT723631L15PQF	IDT72V3611L12PQF	IDT72V3641L15PQF
IDT7052S20PQF	IDT723631L20PQF	IDT72V3611L15PQF	IDT72V3641L20PQF
IDT7052S25PQF	IDT723631L20PQFI	IDT72V3611L15PQFG	IDT72V3642L10PQF
IDT7052S35PQF	IDT723632L12PQF	IDT72V3611L20PQF	IDT72V3642L15PQF
IDT7052S35PQFI	IDT723632L15PQF	IDT72V3612L12PQF	IDT72V3651L15PQF
IDT723611L15PQF	IDT723641L15PQF	IDT72V3612L12PQFG	IDT72V3651L20PQF
IDT723611L20PQF	IDT723641L20PQF	IDT72V3612L15PQF	IDT72V3652L10PQF
IDT723611L20PQFG	IDT723641L20PQFI	IDT72V3612L15PQFG	IDT72V3652L15PQF
IDT723611L20PQFI	IDT723642L12PQF	IDT72V3612L20PQF	IDT72V3662L10PQF
IDT723612L15PQF	IDT723642L12PQFG	IDT72V3613L12PQF	IDT72V3662L15PQF
IDT723612L15PQFG	IDT723642L15PQF	IDT72V3613L15PQF	IDT72V3672L10PQF
IDT723612L20PQF	IDT723642L15PQFGI	IDT72V3613L20PQF	IDT72V3672L15PQF
IDT723612L20PQFI	IDT723651L15PQF	IDT72V3614L12PQF	IDT72V3672L15PQFI


REVISIONS			
REV	DESCRIPTION	DATE	APPROVED
00	INITIAL RELEASE	07/10/06	KK Thee



NOTE: SCALLOP IS CENTERED ON SIDE OF TRAY

- NOTES : (UNLESS OTHERWISE SPECIFIED)
1. MATERIAL : MPP0 (BLACK)
  2. ALL DIMENSIONS ARE IN mm.
  3. TEMPERATURE : 150C MAX
  4. ESD SURFACE RESISTIVITY SHALL CONFORM TO IDT SPEC MSA-3032.
  5. E-PAK PART NUMBER : BLACK TRAY : 6N POPP 132 0409 19  
RED TRAY : 6N POPP 132 0409 33
  6. NUMBER OF POCKET : 4 X 9 = 36 POCKET

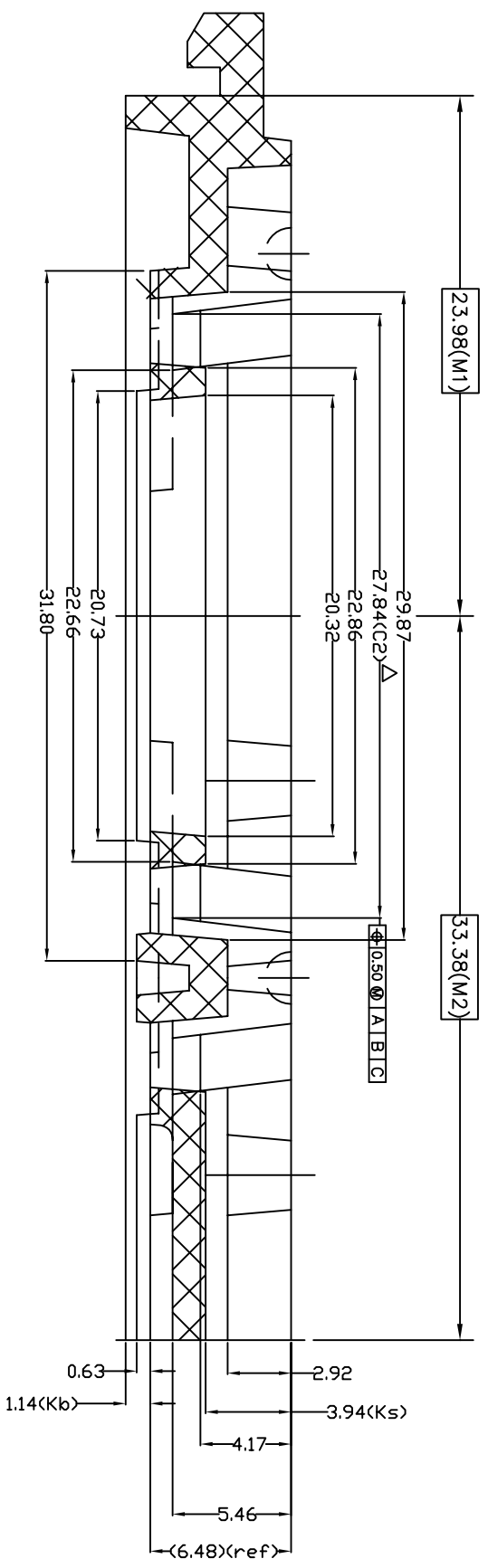
TOLERANCES UNLESS OTHERWISE SPECIFIED		DECIMAL		ANGLE	
.XX ±.13		.X ±.25		°.5°	
.XXX ±.13					
APPROVALS		DATE			
DRAWN				TITLE:	
CHECKED				PQ/PQG 132	
				SHIPPING TRAY	
STOCK NO.		DRAWING NO.		SCALE	
P7-210-000		MSC-5706		N/A	
		00		REV	
DO NOT SCALE DRAWING		SHEET 1 OF 2		SIZE B	



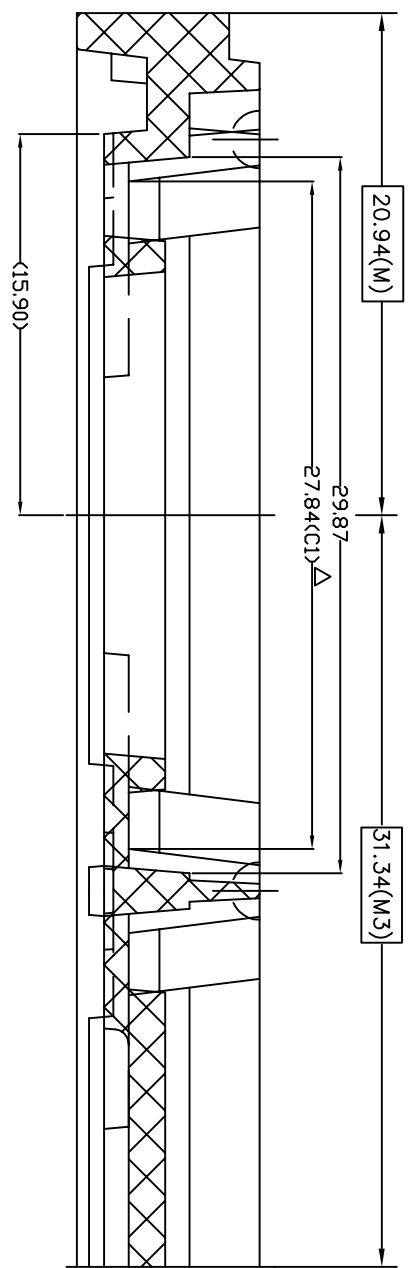
6024 Silver Creek Valley Road  
San Jose, CA 95138  
PHONE: (408) 284-8200  
FAX: (408) 284-3572

www.IDT.com

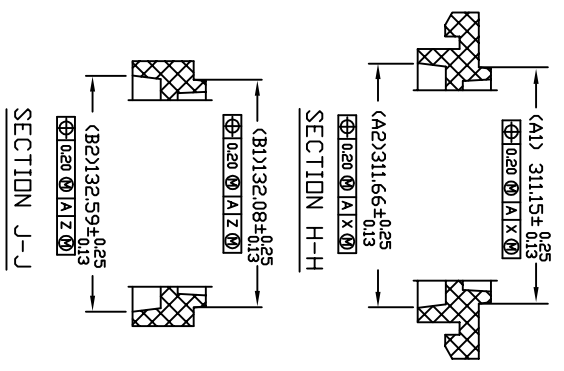
REVISIONS			DATE	APPROVED
REV	DESCRIPTION			
00	INITIAL RELEASE		07/10/06	KK Thee



SECTION A-A



SECTION B-B



TOLERANCES UNLESS OTHERWISE SPECIFIED  
 DECIMAL .25  
 .XX ±.13  
 .XXX ±.13  
 ANGLE ±.5°

APPROVALS \_\_\_\_\_ DATE \_\_\_\_\_

DRAWN \_\_\_\_\_

CHECKED \_\_\_\_\_

FILE: MSC17011

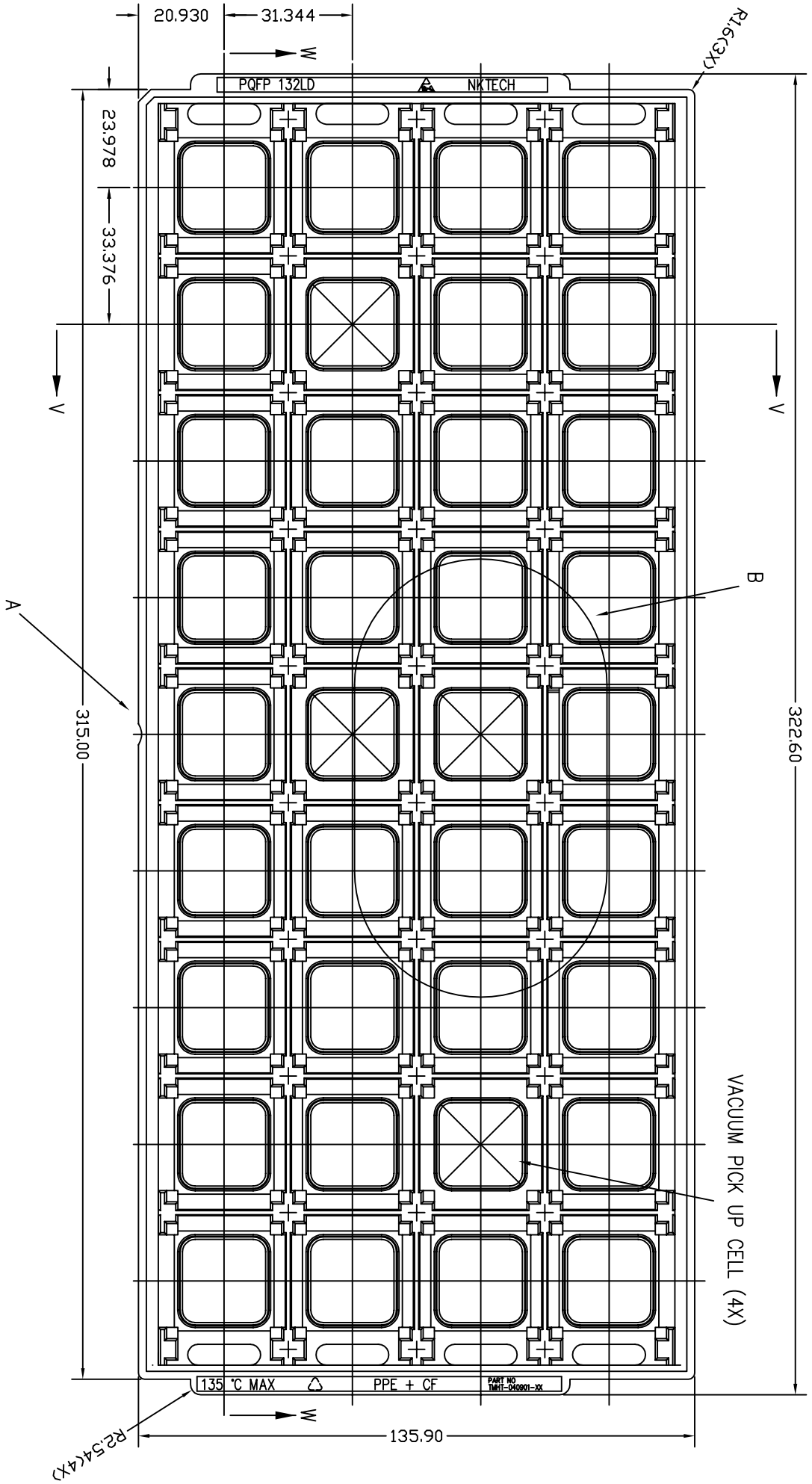
STOCK NO. P7-210-000 MSC-5706  
 DRAWING NO. PQ/PQG 132  
 SHIPPING TRAY

SCALE N/A  
 SIZE B  
 REV 00

DO NOT SCALE DRAWING SHEET 2 OF 2

**IDT** 6024 Silver Creek Valley Road  
 San Jose, CA 95138  
 PHONE: (408) 284-8200  
 FAX: (408) 284-3572  
 WWW.IDT.COM

REVISIONS			
REV	DESCRIPTION	DATE	APPROVED
00	INITIAL RELEASE	07/11/07	KK Three

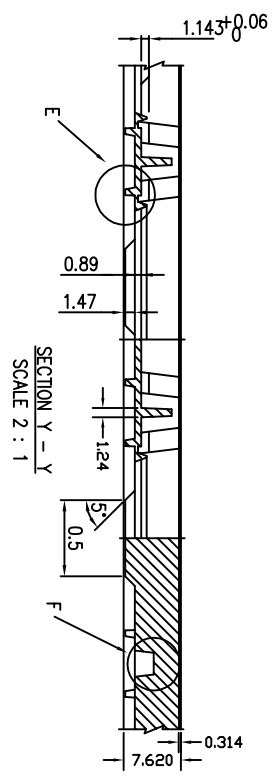
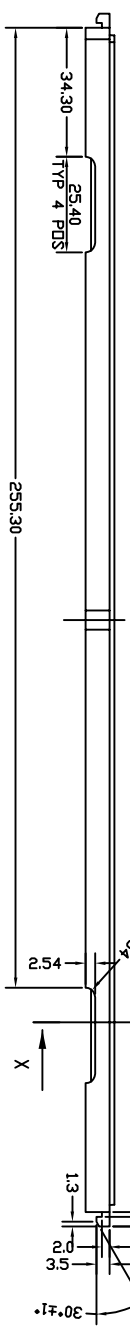
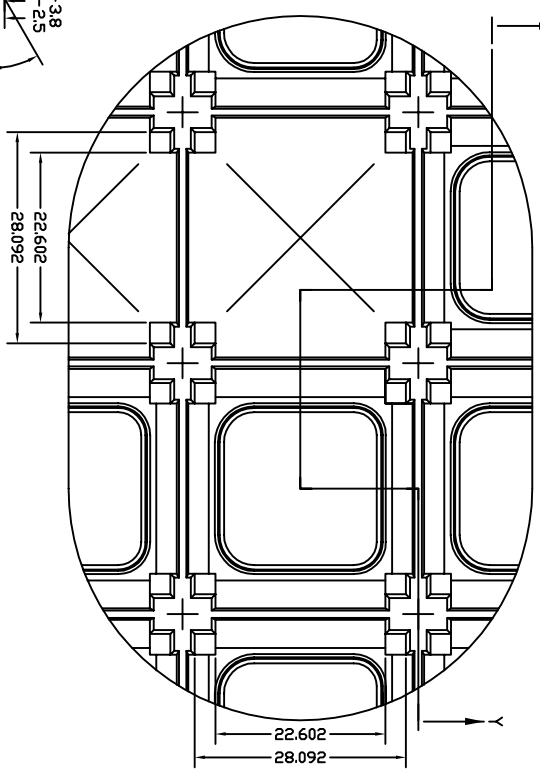
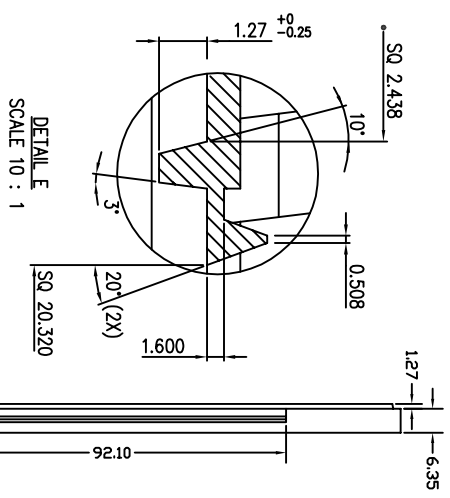
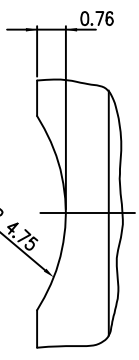
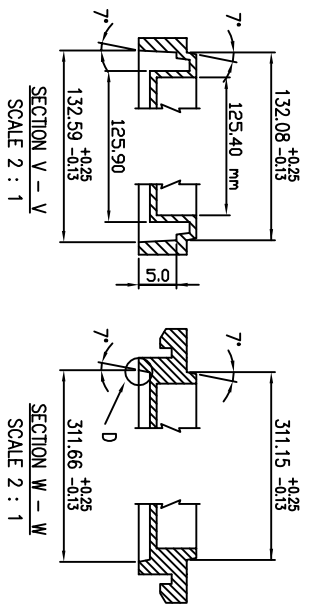


- NOTES : (UNLESS OTHERWISE SPECIFIED)
1. MATERIAL : PPE+CF (BLACK)
  2. ALL DIMENSIONS ARE IN mm.
  3. TEMPERATURE : 135°C MAX
  4. ESD SURFACE RESISTIVITY SHALL CONFORM TO IDT SPEC MSA-3032.
  5. NEPTUNE PART NUMBER : BLACK TRAY : TMHT-040901-01
  6. NUMBER OF POCKET : 4 X 9 = 36 POCKETS

TOLERANCES UNLESS OTHERWISE SPECIFIED		DECIMALS		ANGLE	
.X	±.25	°	±.5°		
.XX	±.13				
.XXX	±.13				
APPROVALS	DATE	DRAWN			
CHECKED		TITLE: Pq/PqG 132 SHIPPING TRAY			
		STOCK NO.	DRAWING NO.	REV	SCALE
		P7-227-0001	MSC-5755	00	N/A
					SIZE B
					REV
					DO NOT SCALE DRAWING
					SHEET 1 OF 3

6024 Silver Creek Valley Road  
San Jose, CA 95138  
PHONE: (408) 284-8200  
FAX: (408) 284-3572  
www.IDT.com

REVISIONS			
REV	DESCRIPTION	DATE	APPROVED
00	INITIAL RELEASE	07/11/07	KK Thee



TOLERANCES UNLESS OTHERWISE SPECIFIED  
 DECIMALS ±.25  
 .XX ±.13  
 .XXX ±.13  
 ANGLES ±.5°

APPROVALS DATE

DRAWN

CHECKED

STOCK NO. P7-227-0001 MSC-5755

DRAWING NO. 00

REV B

SCALE N/A

SIZE B

FILE: MSC17011

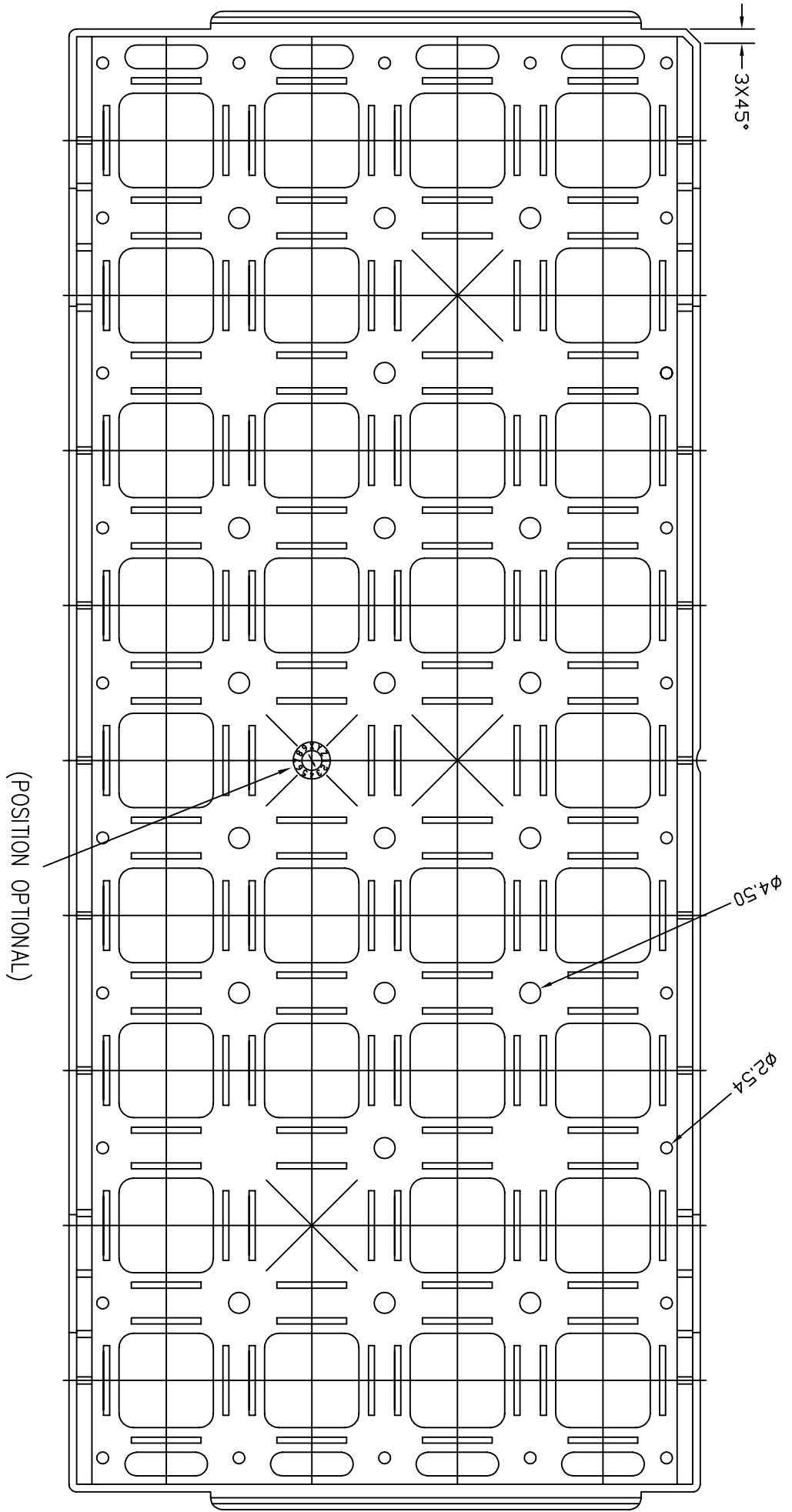
DO NOT SCALE DRAWING SHEET 2 OF 3



6024 Silver Creek Valley Road  
 San Jose, CA 95138  
 PHONE: (408) 284-8200  
 FAX: (408) 284-3572

TITLE: Pq/PqG 132 SHIPPING TRAY

REVISIONS			
REV	DESCRIPTION	DATE	APPROVED
00	INITIAL RELEASE	07/11/07	KK Three



TOLERANCES UNLESS OTHERWISE SPECIFIED  
 DECIMAL .25  
 .X ±.25  
 .XX ±.13  
 .XXX ±.13  
 ANGLE ±.5°

WWW.IDT.COM

6024 Silver Creek Valley Road  
 San Jose, CA 95138  
 PHONE: (408) 284-8200  
 FAX: (408) 284-3572

DRAWN	DATE	TITLE:	SCALE
CHECKED		Pq/PqG 132	N/A
		SHIPPING TRAY	SIZE B
		STOCK NO. P7-227-0001	DRAWING NO. MSC-5755
			REV 00
FILE: MSC1701		DO NOT SCALE DRAWING	SHEET 3 OF 3