

To our customers,

---

## Old Company Name in Catalogs and Other Documents

---

On April 1<sup>st</sup>, 2010, NEC Electronics Corporation merged with Renesas Technology Corporation, and Renesas Electronics Corporation took over all the business of both companies. Therefore, although the old company name remains in this document, it is a valid Renesas Electronics document. We appreciate your understanding.

Renesas Electronics website: <http://www.renesas.com>

April 1<sup>st</sup>, 2010  
Renesas Electronics Corporation

Issued by: Renesas Electronics Corporation (<http://www.renesas.com>)

Send any inquiries to <http://www.renesas.com/inquiry>.

## Notice

1. All information included in this document is current as of the date this document is issued. Such information, however, is subject to change without any prior notice. Before purchasing or using any Renesas Electronics products listed herein, please confirm the latest product information with a Renesas Electronics sales office. Also, please pay regular and careful attention to additional and different information to be disclosed by Renesas Electronics such as that disclosed through our website.
2. Renesas Electronics does not assume any liability for infringement of patents, copyrights, or other intellectual property rights of third parties by or arising from the use of Renesas Electronics products or technical information described in this document. No license, express, implied or otherwise, is granted hereby under any patents, copyrights or other intellectual property rights of Renesas Electronics or others.
3. You should not alter, modify, copy, or otherwise misappropriate any Renesas Electronics product, whether in whole or in part.
4. Descriptions of circuits, software and other related information in this document are provided only to illustrate the operation of semiconductor products and application examples. You are fully responsible for the incorporation of these circuits, software, and information in the design of your equipment. Renesas Electronics assumes no responsibility for any losses incurred by you or third parties arising from the use of these circuits, software, or information.
5. When exporting the products or technology described in this document, you should comply with the applicable export control laws and regulations and follow the procedures required by such laws and regulations. You should not use Renesas Electronics products or the technology described in this document for any purpose relating to military applications or use by the military, including but not limited to the development of weapons of mass destruction. Renesas Electronics products and technology may not be used for or incorporated into any products or systems whose manufacture, use, or sale is prohibited under any applicable domestic or foreign laws or regulations.
6. Renesas Electronics has used reasonable care in preparing the information included in this document, but Renesas Electronics does not warrant that such information is error free. Renesas Electronics assumes no liability whatsoever for any damages incurred by you resulting from errors in or omissions from the information included herein.
7. Renesas Electronics products are classified according to the following three quality grades: "Standard", "High Quality", and "Specific". The recommended applications for each Renesas Electronics product depends on the product's quality grade, as indicated below. You must check the quality grade of each Renesas Electronics product before using it in a particular application. You may not use any Renesas Electronics product for any application categorized as "Specific" without the prior written consent of Renesas Electronics. Further, you may not use any Renesas Electronics product for any application for which it is not intended without the prior written consent of Renesas Electronics. Renesas Electronics shall not be in any way liable for any damages or losses incurred by you or third parties arising from the use of any Renesas Electronics product for an application categorized as "Specific" or for which the product is not intended where you have failed to obtain the prior written consent of Renesas Electronics. The quality grade of each Renesas Electronics product is "Standard" unless otherwise expressly specified in a Renesas Electronics data sheets or data books, etc.

"Standard": Computers; office equipment; communications equipment; test and measurement equipment; audio and visual equipment; home electronic appliances; machine tools; personal electronic equipment; and industrial robots.

"High Quality": Transportation equipment (automobiles, trains, ships, etc.); traffic control systems; anti-disaster systems; anti-crime systems; safety equipment; and medical equipment not specifically designed for life support.

"Specific": Aircraft; aerospace equipment; submersible repeaters; nuclear reactor control systems; medical equipment or systems for life support (e.g. artificial life support devices or systems), surgical implantations, or healthcare intervention (e.g. excision, etc.), and any other applications or purposes that pose a direct threat to human life.

8. You should use the Renesas Electronics products described in this document within the range specified by Renesas Electronics, especially with respect to the maximum rating, operating supply voltage range, movement power voltage range, heat radiation characteristics, installation and other product characteristics. Renesas Electronics shall have no liability for malfunctions or damages arising out of the use of Renesas Electronics products beyond such specified ranges.
9. Although Renesas Electronics endeavors to improve the quality and reliability of its products, semiconductor products have specific characteristics such as the occurrence of failure at a certain rate and malfunctions under certain use conditions. Further, Renesas Electronics products are not subject to radiation resistance design. Please be sure to implement safety measures to guard them against the possibility of physical injury, and injury or damage caused by fire in the event of the failure of a Renesas Electronics product, such as safety design for hardware and software including but not limited to redundancy, fire control and malfunction prevention, appropriate treatment for aging degradation or any other appropriate measures. Because the evaluation of microcomputer software alone is very difficult, please evaluate the safety of the final products or system manufactured by you.
10. Please contact a Renesas Electronics sales office for details as to environmental matters such as the environmental compatibility of each Renesas Electronics product. Please use Renesas Electronics products in compliance with all applicable laws and regulations that regulate the inclusion or use of controlled substances, including without limitation, the EU RoHS Directive. Renesas Electronics assumes no liability for damages or losses occurring as a result of your noncompliance with applicable laws and regulations.
11. This document may not be reproduced or duplicated, in any form, in whole or in part, without prior written consent of Renesas Electronics.
12. Please contact a Renesas Electronics sales office if you have any questions regarding the information contained in this document or Renesas Electronics products, or if you have any other inquiries.

(Note 1) "Renesas Electronics" as used in this document means Renesas Electronics Corporation and also includes its majority-owned subsidiaries.

(Note 2) "Renesas Electronics product(s)" means any product developed or manufactured by or for Renesas Electronics.

To all our customers

---

## **Regarding the change of names mentioned in the document, such as Hitachi Electric and Hitachi XX, to Renesas Technology Corp.**

---

The semiconductor operations of Mitsubishi Electric and Hitachi were transferred to Renesas Technology Corporation on April 1st 2003. These operations include microcomputer, logic, analog and discrete devices, and memory chips other than DRAMs (flash memory, SRAMs etc.) Accordingly, although Hitachi, Hitachi, Ltd., Hitachi Semiconductors, and other Hitachi brand names are mentioned in the document, these names have in fact all been changed to Renesas Technology Corp. Thank you for your understanding. Except for our corporate trademark, logo and corporate statement, no changes whatsoever have been made to the contents of the document, and these changes do not constitute any alteration to the contents of the document itself.

Renesas Technology Home Page: <http://www.renesas.com>

Renesas Technology Corp.  
Customer Support Dept.  
April 1, 2003

## Cautions

Keep safety first in your circuit designs!

1. Renesas Technology Corporation puts the maximum effort into making semiconductor products better and more reliable, but there is always the possibility that trouble may occur with them. Trouble with semiconductors may lead to personal injury, fire or property damage.

Remember to give due consideration to safety when making your circuit designs, with appropriate measures such as (i) placement of substitutive, auxiliary circuits, (ii) use of nonflammable material or (iii) prevention against any malfunction or mishap.

Notes regarding these materials

1. These materials are intended as a reference to assist our customers in the selection of the Renesas Technology Corporation product best suited to the customer's application; they do not convey any license under any intellectual property rights, or any other rights, belonging to Renesas Technology Corporation or a third party.
2. Renesas Technology Corporation assumes no responsibility for any damage, or infringement of any third-party's rights, originating in the use of any product data, diagrams, charts, programs, algorithms, or circuit application examples contained in these materials.
3. All information contained in these materials, including product data, diagrams, charts, programs and algorithms represents information on products at the time of publication of these materials, and are subject to change by Renesas Technology Corporation without notice due to product improvements or other reasons. It is therefore recommended that customers contact Renesas Technology Corporation or an authorized Renesas Technology Corporation product distributor for the latest product information before purchasing a product listed herein.  
The information described here may contain technical inaccuracies or typographical errors. Renesas Technology Corporation assumes no responsibility for any damage, liability, or other loss rising from these inaccuracies or errors.  
Please also pay attention to information published by Renesas Technology Corporation by various means, including the Renesas Technology Corporation Semiconductor home page (<http://www.renesas.com>).
4. When using any or all of the information contained in these materials, including product data, diagrams, charts, programs, and algorithms, please be sure to evaluate all information as a total system before making a final decision on the applicability of the information and products. Renesas Technology Corporation assumes no responsibility for any damage, liability or other loss resulting from the information contained herein.
5. Renesas Technology Corporation semiconductors are not designed or manufactured for use in a device or system that is used under circumstances in which human life is potentially at stake. Please contact Renesas Technology Corporation or an authorized Renesas Technology Corporation product distributor when considering the use of a product contained herein for any specific purposes, such as apparatus or systems for transportation, vehicular, medical, aerospace, nuclear, or undersea repeater use.
6. The prior written approval of Renesas Technology Corporation is necessary to reprint or reproduce in whole or in part these materials.
7. If these products or technologies are subject to the Japanese export control restrictions, they must be exported under a license from the Japanese government and cannot be imported into a country other than the approved destination.  
Any diversion or reexport contrary to the export control laws and regulations of Japan and/or the country of destination is prohibited.
8. Please contact Renesas Technology Corporation for further details on these materials or the products contained therein.

# SH7750S E8000S Emulator

## Diagnostic Program Manual



## Cautions

1. Hitachi neither warrants nor grants licenses of any rights of Hitachi's or any third party's patent, copyright, trademark, or other intellectual property rights for information contained in this document. Hitachi bears no responsibility for problems that may arise with third party's rights, including intellectual property rights, in connection with use of the information contained in this document.
2. Products and product specifications may be subject to change without notice. Confirm that you have received the latest product standards or specifications before final design, purchase or use.
3. Hitachi makes every attempt to ensure that its products are of high quality and reliability. However, contact Hitachi's sales office before using the product in an application that demands especially high quality and reliability or where its failure or malfunction may directly threaten human life or cause risk of bodily injury, such as aerospace, aeronautics, nuclear power, combustion control, transportation, traffic, safety equipment or medical equipment for life support.
4. Design your application so that the product is used within the ranges guaranteed by Hitachi particularly for maximum rating, operating supply voltage range, heat radiation characteristics, installation conditions and other characteristics. Hitachi bears no responsibility for failure or damage when used beyond the guaranteed ranges. Even within the guaranteed ranges, consider normally foreseeable failure rates or failure modes in semiconductor devices and employ systemic measures such as fail-safes, so that the equipment incorporating Hitachi product does not cause bodily injury, fire or other consequential damage due to operation of the Hitachi product.
5. This product is not designed to be radiation resistant.
6. No one is permitted to reproduce or duplicate, in any form, the whole or part of this document without written approval from Hitachi.
7. Contact Hitachi's sales office for any questions regarding this document or Hitachi semiconductor products.





# IMPORTANT INFORMATION

## READ FIRST

- **READ this user's manual before using this emulator product.**
- **KEEP the user's manual handy for future reference.**

**Do not attempt to use the emulator product until you fully understand its mechanism.**

### **Emulator Product:**

Throughout this document, the term "emulator product" shall be defined as the following products produced only by Hitachi, Ltd. excluding all subsidiary products.

- Emulator station
- Device control board
- EV-chip board
- User system interface cable

The user system or a host computer is not included in this definition.

### **Purpose of the Emulator Product:**

This emulator product is a software and hardware development tool for systems employing the Hitachi microcomputer HD6417750S (hereinafter referred to as SH7750S). By exchanging the device control board and EV-chip board, this emulator product can also be used for systems using Hitachi microcomputers supported by other E8000S-series emulators. This emulator product must only be used for the above purpose.

### **Limited Applications:**

This emulator product is not authorized for use in MEDICAL, atomic energy, aeronautical or space technology applications without consent of the appropriate officer of a Hitachi sales company. Such use includes, but is not limited to, use in life support systems. Buyers of this emulator product must notify the relevant Hitachi sales offices before planning to use the product in such applications.

### **Improvement Policy:**

Hitachi, Ltd. (including its subsidiaries, hereafter collectively referred to as Hitachi) pursues a policy of continuing improvement in design, performance, and safety of the emulator product. Hitachi reserves the right to change, wholly or partially, the specifications, design, user's manual, and other documentation at any time without notice.

### **Target User of the Emulator Product:**

This emulator product should only be used by those who have carefully read and thoroughly understood the information and restrictions contained in the user's manual. Do not attempt to use the emulator product until you fully understand its mechanism.

It is highly recommended that first-time users be instructed by users that are well versed in the operation of the emulator product.

## **LIMITED WARRANTY**

Hitachi warrants its emulator products to be manufactured in accordance with published specifications and free from defects in material and/or workmanship. Hitachi, at its option, will repair or replace any emulator products returned intact to the factory, transportation charges prepaid, which Hitachi, upon inspection, determine to be defective in material and/or workmanship.

The foregoing shall constitute the sole remedy for any breach of Hitachi's warranty. See the Hitachi warranty booklet for details on the warranty period. This warranty extends only to you, the original Purchaser. It is not transferable to anyone who subsequently purchases the emulator product from you. Hitachi is not liable for any claim made by a third party or made by you for a third party.

## **DISCLAIMER**

HITACHI MAKES NO WARRANTIES, EITHER EXPRESS OR IMPLIED, ORAL OR WRITTEN, EXCEPT AS PROVIDED HEREIN, INCLUDING WITHOUT LIMITATION THEREOF, WARRANTIES AS TO MARKETABILITY, MERCHANTABILITY, FITNESS FOR ANY PARTICULAR PURPOSE OR USE, OR AGAINST INFRINGEMENT OF ANY PATENT. IN NO EVENT SHALL HITACHI BE LIABLE FOR ANY DIRECT, INCIDENTAL OR CONSEQUENTIAL DAMAGES OF ANY NATURE, OR LOSSES OR EXPENSES RESULTING FROM ANY DEFECTIVE EMULATOR PRODUCT, THE USE OF ANY EMULATOR PRODUCT, OR ITS DOCUMENTATION, EVEN IF ADVISED OF THE POSSIBILITY OF SUCH DAMAGES. EXCEPT AS EXPRESSLY STATED OTHERWISE IN THIS WARRANTY, THIS EMULATOR PRODUCT IS SOLD "AS IS", AND YOU MUST ASSUME ALL RISK FOR THE USE AND RESULTS OBTAINED FROM THE EMULATOR PRODUCT.

**State Law:**

Some states do not allow the exclusion or limitation of implied warranties or liability for incidental or consequential damages, so the above limitation or exclusion may not apply to you. This warranty gives you specific legal rights, and you may have other rights which may vary from state to state.

**The Warranty is Void in the Following Cases:**

Hitachi shall have no liability or legal responsibility for any problems caused by misuse, abuse, misapplication, neglect, improper handling, installation, repair or modifications of the emulator product without Hitachi's prior written consent or any problems caused by the user system.

**All Rights Reserved:**

This user's manual and emulator product are copyrighted and all rights are reserved by Hitachi. No part of this user's manual, all or part, may be reproduced or duplicated in any form, in hard-copy or machine-readable form, by any means available without Hitachi's prior written consent.

**Other Important Things to Keep in Mind:**

1. Circuitry and other examples described herein are meant merely to indicate the characteristics and performance of Hitachi's semiconductor products. Hitachi assumes no responsibility for any intellectual property claims or other problems that may result from applications based on the examples described herein.
2. No license is granted by implication or otherwise under any patents or other rights of any third party or Hitachi.

**Figures:**

Some figures in this user's manual may show items different from your actual system.

**Limited Anticipation of Danger:**

Hitachi cannot anticipate every possible circumstance that might involve a potential hazard. The warnings in this user's manual and on the emulator product are therefore not all inclusive. Therefore, you must use the emulator product safely at your own risk.

# SAFETY PAGE

## READ FIRST

- **READ** this user's manual before using this emulator product.
- **KEEP** the user's manual handy for future reference.

Do not attempt to use the emulator product until you fully understand its mechanism.

## DEFINITION OF SIGNAL WORDS



This is the safety alert symbol. It is used to alert you to potential personal injury hazards. Obey all safety messages that follow this symbol to avoid possible injury or death.



**DANGER** indicates an imminently hazardous situation which, if not avoided, will result in death or serious injury.



**WARNING** indicates a potentially hazardous situation which, if not avoided, could result in death or serious injury.



**CAUTION** indicates a potentially hazardous situation which, if not avoided, may result in minor or moderate injury.



**CAUTION** used without the safety alert symbol indicates a potentially hazardous situation which, if not avoided, may result in property damage.

**NOTE** emphasizes essential information.

# **WARNING**

**Observe the precautions listed below. Failure to do so will result in a FIRE HAZARD and will damage the user system and the emulator product or will result in PERSONAL INJURY. The USER PROGRAM will be LOST.**

- 1. Carefully handle the emulator product to prevent receiving an electric shock because the emulator product has a DC power supply. Do not repair or remodel the emulator product by yourself for electric shock prevention and quality assurance.**
- 2. Always switch OFF the emulator product and user system before connecting or disconnecting any CABLES or PARTS.**
- 3. Always before connecting any CABLES, make sure that pin 1 on both sides are correctly aligned.**
- 4. Supply power according to the power specifications and do not apply an incorrect power voltage. Use only the provided power cable.**

# Warnings on Emulator Usage

Warnings described below apply as long as you use this emulator. Be sure to read and understand the warnings below before using this emulator. Note that these are the main warnings, not the complete list.

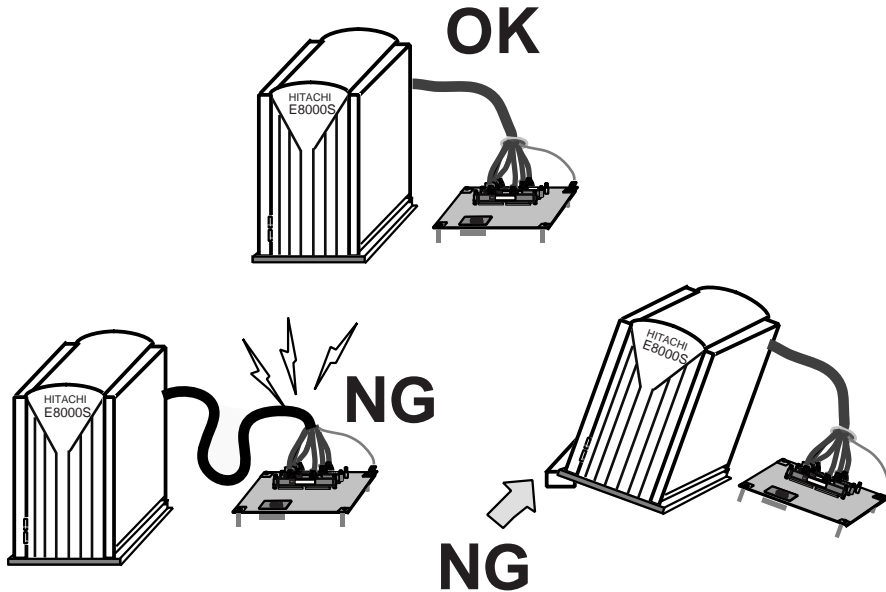


## **WARNING**

**Always switch OFF the emulator and user system before connecting or disconnecting any CABLES or PARTS. Failure to do so will result in a FIRE HAZARD and will damage the user system and the emulator product or will result in PERSONAL INJURY. The USER PROGRAM will be LOST.**

# CAUTION

Place the emulator station and EV-chip board so that the trace cables are not bent or twisted. A bent or twisted cable will impose stress on the user interface leading to connection or contact failure. Make sure that the emulator station is placed in a secure position so that it does not move during use nor impose stress on the user interface.



# Preface

Thank you for purchasing the E8000S emulator for Hitachi's original microcomputer SH7750S.

The diagnostic program automatically checks whether the E8000S emulator is operating correctly. Read this manual and understand it before using the diagnostic program.

## CAUTION

**Read section 3, Preparation before Use in the SH7750S E8000S Emulator User's Manual before using the emulator product. Incorrect operation or connection will damage the user system, the emulator product, and the user program.**

The emulator is an efficient software and hardware development tool for systems based on Hitachi microcomputer SH7750S. By exchanging the device control board and the evaluation chip board, this emulator can also be used for systems using other microcomputers. The emulator is operated by using the Hitachi Debugging Interface (hereafter referred to as HDI). This interface program is supported by Windows<sup>®</sup> 95, Windows<sup>®</sup> 98, and Windows NT<sup>®</sup> 4.0\*.

Note: The PC interface card (PCMCIA) is not supported by Windows NT<sup>®</sup> 4.0.

### Related Manuals:

Description Notes on Using the PC Interface Board (HS6000EII01H)

Description Notes on Using the PC Card Interface (HS6000EIP01H) for the E6000/E8000 Emulator

Description Notes on Using the PCI Interface Board (HS6000EIC01H) for the E6000/E8000 Emulator

Description Notes on Using the PCI Interface Board (HS6000EIC02H) for the E6000/E8000 Emulator

Description Notes on Using the LAN Adapter (HS6000ELN01H) for the E6000/E8000 Emulator

Hitachi Embedded Workshop User's Manual

SuperH<sup>™</sup> RISC engine C/C++ Compiler User's Manual

SuperH<sup>™</sup> RISC engine Assembler User's Manual

H Series Linkage Editor, Librarian, Object Converter User's Manual

Hitachi Debugging Interface User's Manual

Hardware Manual supporting each MPU

Programming Manual supporting each MPU



- Notes:
1. IBM PC is a registered trademark of International Business Machines Corporation.
  2. Microsoft<sup>®</sup>, Windows<sup>®</sup>, and Windows NT<sup>®</sup> 4.0 are registered trademarks of Microsoft Corporation in the United States and/or in other countries.
  3. Pentium<sup>®</sup> is a registered trademark of Intel Corporation in the United States.

- Abbreviation:
1. Windows NT<sup>®</sup> 4.0 is an abbreviation for Microsoft<sup>®</sup> Windows NT<sup>®</sup> 4.0 operating system.
  2. Windows<sup>®</sup> 95 is an abbreviation for Microsoft<sup>®</sup> Windows<sup>®</sup> 95 operating system.
  3. Windows<sup>®</sup> 98 is an abbreviation for Microsoft<sup>®</sup> Windows<sup>®</sup> 98 operating system.

# Contents

Section 1 Overview .....	1
1.1 Purpose.....	1
Section 2 Configuration .....	2
2.1 Test System Configuration.....	2
Section 3 Diagnostic Program Function.....	4
3.1 General Description .....	4
3.2 Test Items of the Diagnostic Program.....	6
3.3 Operation Flowchart .....	9
Section 4 Diagnostic Program Operation Procedures .....	10
4.1 Installation Procedure .....	11
4.2 Operation Procedure .....	11
Section 5 Error Handling .....	21
5.1 Acquiring Execution Results and Printing Them.....	21
5.1.1 Acquiring Diagnostic Program Execution Results.....	21
5.1.2 Printing Execution Results.....	22



# Section 1 Overview

## 1.1 Purpose

This diagnostic program is used to automatically troubleshoot and maintain a SH7750S E8000S emulator (hereinafter referred to as the E8000S emulator) hardware system. When an error indicating a failure in the emulator occurs, execute the diagnostic program according to this manual.

The diagnostic program is on a CD-R (HS7750SEBB81SR).

- Notes:
1. This diagnostic program is not capable of finding all failures possible to occur in the E8000S emulator.
  2. If execution results of the diagnostic program indicate a failure in the E8000S emulator, inform a Hitachi sales agency of the test results in detail.
  3. Hitachi makes no warranties for an E8000S emulator that has been taken apart, repaired, or remodeled by the user based on the test results of the diagnostic program.
  4. In addition to this diagnostic program, run the emulator internal system test described in section 5, Troubleshooting, in the SH7750S E8000S Emulator User's Manual.

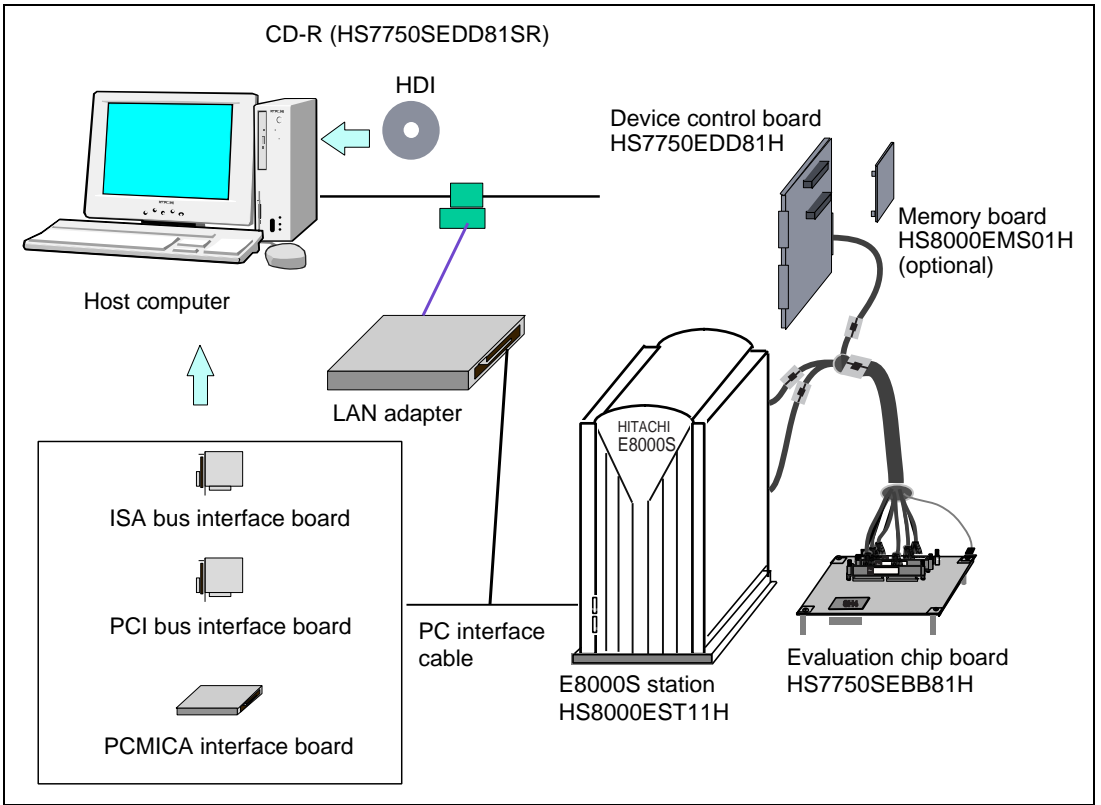
# Section 2 Configuration

## 2.1 Test System Configuration

Components required for diagnostic program execution are shown in table 2.1, and the test system configuration is shown in figure 2.1.

**Table 2.1 Test System Components**

<b>Components</b>		<b>Remarks</b>
E8000S emulator (HS8000EST11H)	Device control board (HS7750EDD81H)	Always necessary
	Trace board (HS8000PWB20H)	Always necessary
	Control board (HS8000PWB81H)	Always necessary
	PC I/F board (HS8000PWB85H)	Always necessary
EV-chip board (HS7750SEBB81H)		Always necessary
Memory board (HS8000EMS01H)		Optional
PC interface board (ISA bus interface, PCI interface, PCMCIA interface, or LAN adapter)		Optional
Host computer		Always necessary
CD-R (HS7750SEBB81SR)		Always necessary



**Figure 2.1 Test System Configuration**

# Section 3 Diagnostic Program Function

## 3.1 General Description

The diagnostic program is registered to the flash memory in the E8000S station and executed from the HDI. For the operation procedures, refer to section 4, Diagnostic Program Operation Procedures.

The diagnostic program has three test-system configurations: E8000 ONLY test and E8000 + EVCHIP test and E8000 + EVCHIP + FIXED USER test. Note that the E8000 + EVCHIP + FIXED USER test cannot be executed, for it is the E8000 emulator system test at shipment and needs an additional system for testing.

### **CAUTION**

**Before executing an independent E8000S emulator system test, remove the EV-CHIP BOARD from the USER SYSTEM.**

**Correct test results cannot be obtained when the E8000S emulator is still connected to the user system.**

#### 1. E8000 Emulator System Test (E8000 ONLY)

The system configuration shown in figure 2.1 is used for testing the E8000 emulator system. The test results are displayed on the host computer display. After start-up, the system enters an endless test loop without operator intervention until an error is detected. When an error occurs and ERROR CONTINUE is not specified, the test is terminated. If ERROR CONTINUE is specified, the test resumes execution after an error content display. When initiating the diagnostic program, select whether to execute the following tests:

— Operation tests

#### 2. Test of E8000S Emulator and SH7750S EV-Chip Board (E8000 + EVCHIP)

The system configuration shown in figure 2.1 is used for testing the E8000S emulator, and the SH7750S EV-chip board for the E8000S emulator. The test results are displayed on the host computer display. After start-up, the system enters an endless test loop without operator intervention until an error is detected. When an error occurs and ERROR CONTINUE is not specified, the test is terminated. If ERROR CONTINUE is specified, the test resumes execution after an error content display. When initiating the diagnostic program, select whether to execute the following test:

— Operation test

Notes: Stop diagnostic program execution, after it has been executed for two times by pressing the STOP button on the [DIAGNOSTIC PROGRAM] dialog box and interrupt the test.



## 3.2 Test Items of the Diagnostic Program

The test items to be tested by this diagnostic program are listed in table 3.1. The test items to be executed depend on the test system configuration.

**Table 3.1 Diagnostic Program Test Items**

No.	Test Item	Description	Executed or Not	
			E8000 ONLY	E8000 + EVCHIP
TEST01	FLASH MEMORY READ TEST	Control board flash memory test	O	O
TEST02	CONT WORK RAM TEST	Control board work RAM test	O	O
TEST03	RESERVE	Reserved	O	O
TEST04	RESERVE	Reserved	O	O
TEST05	RESERVE	Reserved	O	O
TEST06	RESERVE	Reserved	X	X
TEST07	RESERVE	Reserved	X	X
TEST08	RESERVE	Reserved	X	X
TEST09	RESERVE	Reserved	O	O
TEST10	CONT REG. TEST	Control board register test	O	O
TEST11	IDR READ TEST	E8000 hardware configuration check	O	O
TEST12	DIP SWITCH TEST	Control board DIP switch test	X	X
TEST13	TRACE REG. TEST	Trace board register test	O	O
TEST14	TRACE RAM TEST	Trace board RAM test	O	O
TEST15	RESERVE	Reserved	O	O
TEST16	EBOX TEST	DCONT firmware and ID check		O
TEST17	ERAM WINDOW TEST	ERAM read/write test		O
TEST18	ERAM STEP TEST	ERAM step test		O
TEST19	ERAM HARD BREAK TEST1	ERAM hardware break test		O
TEST20	ERAM HARD BREAK TEST2	ERAM hardware break test		O
TEST21	ERAM SOFT BREAK TEST	ERAM software break test		O
TEST22	COMPULSORY BREAK TEST	CBR register break test		O

**Table 3.1 Diagnostic Program Test Items (cont)**

No.	Test Item	Description	Executed or Not	
			E8000 ONLY	E8000 + EVCHIP
TEST23	ERAM TRACE TEST	ERAM trace mode test		O
TEST24	ERAM TIME MEASUREMENT TEST	Time measurement function check		O
TEST25	ERAM PARALLEL MONITOR TEST	ERAM parallel monitor test		O
TEST26	RESERVE	Reserved		O
TEST27	JTAG CONTROLLER TEST	JTAG controller test		O
TEST28	RTC TEST	Test for port pin that is multiplexed with other signals		O
TEST29	OPTION ERAM TEST	Read/write test for optional ERAM		O
TEST30	EMLK TEST	Reserved		O
TEST31	RESERVE	Reserved		O

Notes: O: Executed without operator intervention

X: Executed when specified

None: Not executed

Note: If an error occurs and ERROR CONTINUE is not specified, displays an error message, stops test execution, and displays the following message:

Retry (Y/N) ?

If Y is entered, retests the test item wherein the error occurred.

If N is entered, displays the following message:

Continue (Y/N) ?

If Y is entered, quits testing the test item wherein the error occurred and goes on to the next test item.

If N is entered, displays the following message:

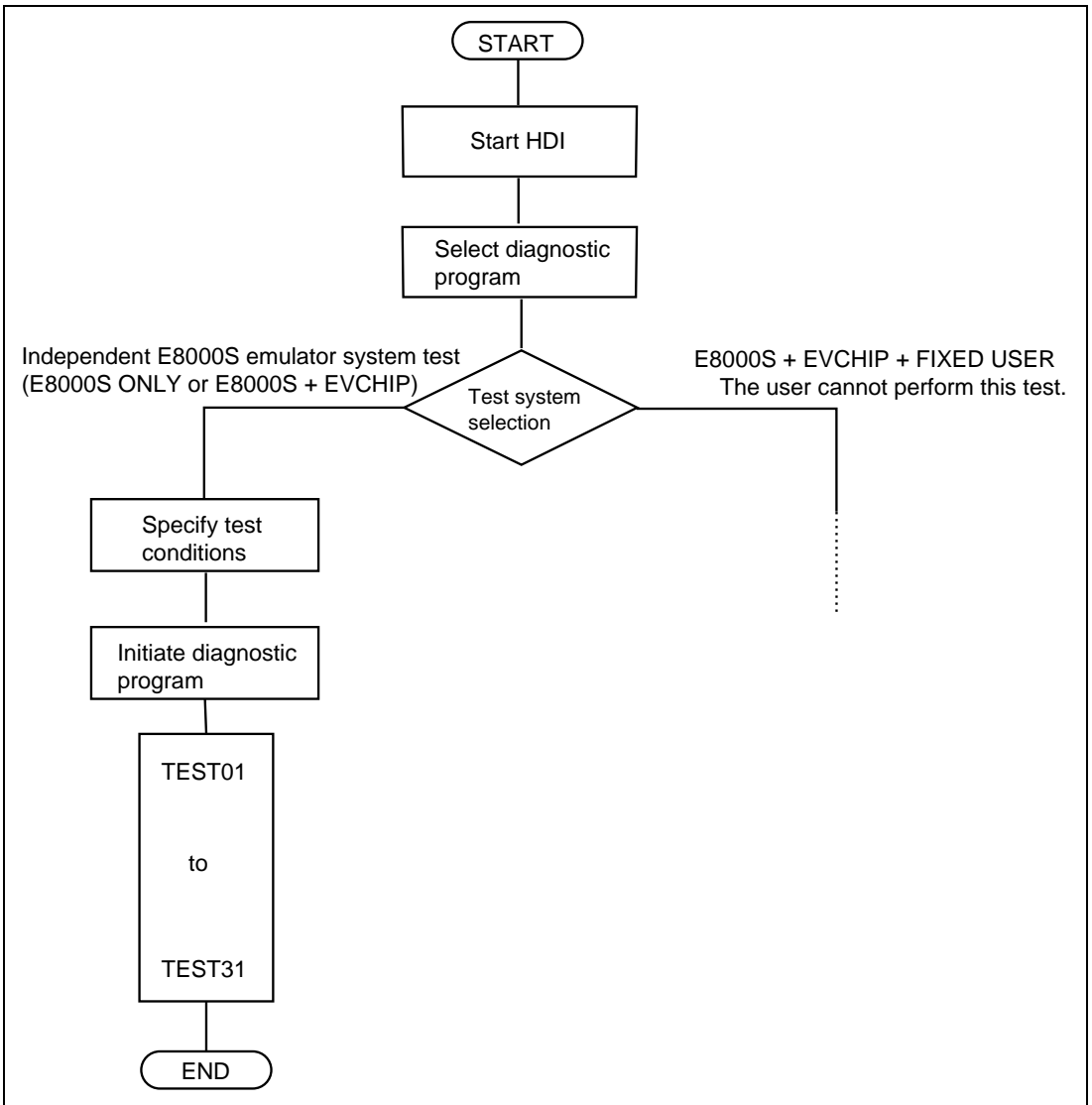
Abort (Y/N) ?

If Y is entered, resets the system software.

If N is entered, returns to the first message (Retry (Y/N) ?) and repeats the above procedure until Y is entered.

### 3.3 Operation Flowchart

Figure 3.1 shows the diagnostic program operation flowchart.



**Figure 3.1 Diagnostic Program Operation Flowchart**

Note: TEST12 is executed when the operation tests are specified.  
TEST16 to TEST28 are not executed when the E8000 ONLY test is selected.

## Section 4 Diagnostic Program Operation Procedures

This section describes the diagnostic program operation procedure.

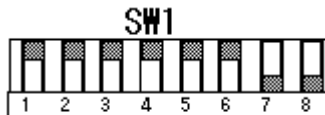
### **WARNING**

**Always switch OFF all devices before connecting or disconnecting the E8000S EMULATOR and OTHER DEVICES.**

**Failure to do so will result in a FIRE HAZARD and will damage the E8000S emulator and other devices, or will result in PERSONAL INJURY.**

When the diagnostic program is executed by using the ISA bus interface (PCI interface, PCMCIA interface, or LAN adapter is included), execute the program from the HDI. For HDI installation and diagnostic program operation, refer to section 3.5 Installing the System Program, and section 3.7.4 Operating Procedure for the Diagnostic Program, in section 3 Preparation before Use in the SH7750S E8000S Emulator User's Manual.

- Notes:**
- 1. To execute the diagnostic program, DIAG.SYS, E8000.SYS, SHCNF750.SYS, and SHDCT750.SYS must be installed in flash memory, according to the instructions in the SH7750S E8000S Emulator User's Manual (HS7750SEBK81HE).**
  - 2. Before executing the diagnostic program, make sure the DIP switches have the same settings as at shipment (refer to figure 4.1).**
  - 3. When using the ISA bus interface, execute the diagnostic program from HDI.**



**Figure 4.1 DIP Switch Setting at Shipment**

## 4.1 Installation Procedure

To execute the diagnostic program, file DIAG.SYS must be installed in the E8000S emulator flash memory.

For details on installation, refer to section 3.5 Installing the System Program, in section 3 Preparation before Use, in the SH7750S E8000S Emulator User's Manual.

## 4.2 Operation Procedure

All documents should contain the following section break and paragraph as the last item. The footers of this document refer to the paragraph in order to reference the last page of the document.

1. Correctly connect the following components.

- E8000S emulator and host computer
- E8000S emulator and EV-chip board

For other components, check connection according to the user system configuration.

**Remove the EV-chip board from the user system.**

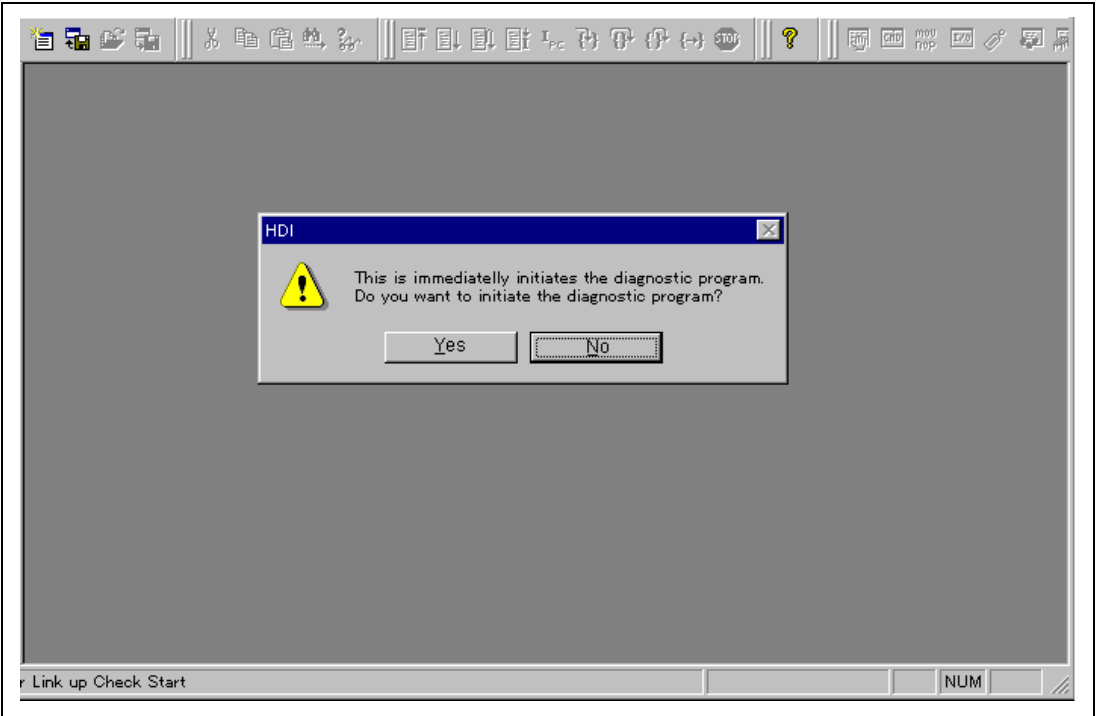
2. Turn on the following power supplies.

- Host computer
- E8000S emulator

For other components, supply an appropriate voltage according to the user system configuration.

3. Start up the Hitachi Debugging Interface (HDI) on the host computer.

After the HDI is initiated, the selection screen will be displayed as shown in figure 4.2. Select Yes to execute the diagnostic program. The start message will be displayed as shown in figure 4.3.



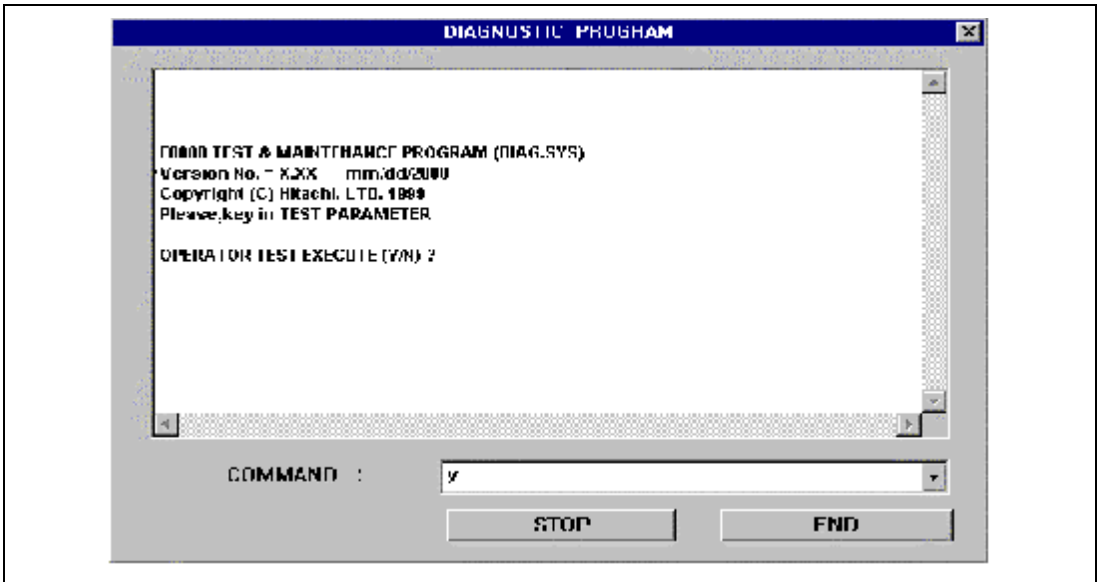
**Figure 4.2 Selection Screen of the Diagnostic Program**

If the dialog box for confirming the initiation of the diagnostic program is not displayed on the initiation of the HDI, the Diagnostic Program resource information in the E8775032.INI file is N.

To enable the use of the diagnostic program, modify the Diagnostic Program resource information in the way shown below.

```
[E8000 HDI TARGET]

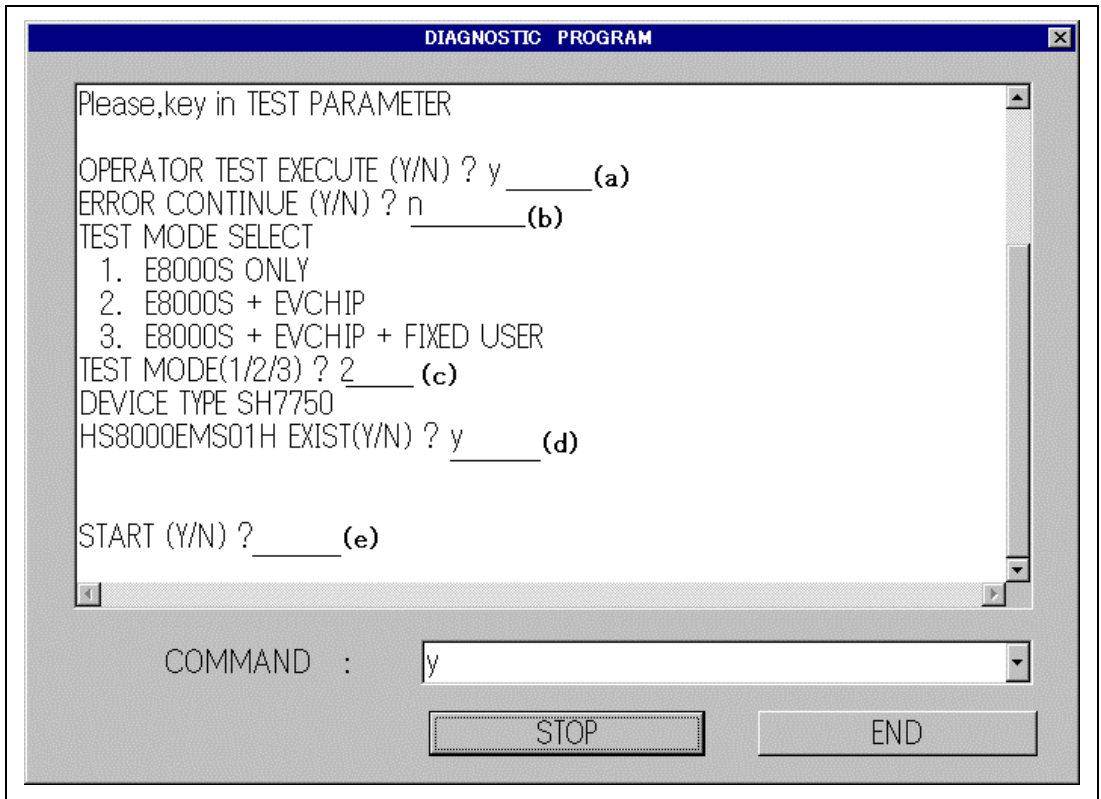
Diagnostic Program = Y
```



**Figure 4.3 Start Message of the Diagnostic Program**

4. Select test condition  
Select the desired test conditions.





**Figure 4.4 Selection of the Test Condition**

**Description:**

- (a) Only for tests requiring operator intervention. Enter Y to execute the operation tests. Otherwise, enter N.
  - (b) Y: Test continues when an error occurs.  
N: Test stops when an error occurs.
  - (c) 1: E8000 emulator system test (independent E8000 emulator system test)  
2: E8000 emulator, device control board, and EV-chip board test  
3: E8000 emulator system test at shipment — cannot be used.
  - (d) Y: Memory board is connected.  
N: Memory board is not connected.
  - (e) The test starts by entering Y. If N is entered, the diagnostic program main title will be displayed again.
6. Execute the diagnostic program using the procedure shown in figure 3.1.  
Execute each test item following the diagnostic program specifications. OK is displayed if a test is executed with no errors. An example of the E8000 + EVCHIP test is shown at the end of section 4.

7. For executing the operation tests (TEST12)

To execute the operation tests, operator interventions are required during diagnostic program execution. Perform the following operations while executing the operation tests.

**Operation Procedures for TEST12 (DIP SWITCH TEST):**

(1) Enter Y to the following message at diagnostic program initiation:

```
OPERATION TEST EXECUTE (Y/N)? Y (RET)
```

(2) When the diagnostic program is executed, the E8000S emulator will halt at the following message and wait for command input:

```
TEST12 DIP SW TEST (COUNT = 001)
```

```
DIPSW = C0
```

```
DIPSWITCH 1= 55 SET OK (Y/N)
```

(3) After setting the DIP switches as shown in figure 4.5 (1), enter Y.

(4) If no error occurs, the following message is displayed:

```
TEST OK
```

(5) The E8000 emulator will halt again at the following message:

```
DIPSWITCH 1= AA SET OK (Y/N)
```

(6) After setting the DIP switches as shown in figure 4.5 (2), enter Y.

(7) If no error occurs, the following message is displayed:

```
TEST OK
```

(8) The E8000 emulator will halt again at the following message:

```
DIPSWITCH 1= C0 SET OK (Y/N)
```

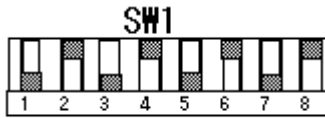
(9) After setting the DIP switches as shown in figure 4.5 (3), enter Y.

(10) If no error occurs, the following message is displayed:

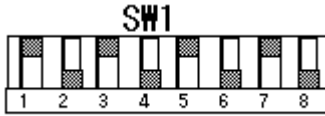
```
TEST OK
```

Note: (RET): RETURN key

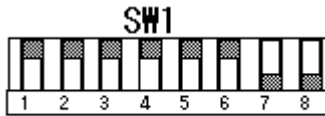
(1) DIP switch setting (55)



(2) DIP switch setting (AA)



(3) DIP switch setting (CO (at shipment))



**Figure 4.5 DIP Switch Settings**

```

E8000 TEST & MAINTENANCE PROGRAM (DIAG.SYS)

Version No. = x.xx      mm/dd/yyyy      (x.xx: version number)
Copyright (C) Hitachi, LTD. 1999
Please,key in TEST PARAMETER

ERROR CONTINUE (Y/N) ? n
TEST MODE SELECT
  1.  E8000S ONLY
  2.  E8000S + EVCHIP
  3.  E8000S + EVCHIP + FIXED USER
TEST MODE(1/2/3) ? 2

DEVICE TYPE SH7750
HS8000EMS01H EXIST(Y/N) ? y

START (Y/N) ? y
TEST01 FLASH MEMORY READ TEST (COUNT=001)
  (1)MONITOR SUM CHECK      OK
  (2)SYSTEM SUM CHECK      OK
  (3)EVCHIP FIRM SUM CHECK  OK
  (4)CONFIG SUM CHECK      OK
  (5)T/M SUM CHECK         OK
  (6)ITRON SUM CHECK
NO TRON FILE
TEST02 CONT WORK RAM TEST      (COUNT=001)
  (1) PAUSE TEST          OK
  (2) MARCHING TEST      OK
TEST03 RESERVE                  (COUNT=001)
TEST04 RESERVE                  (COUNT=001)
TEST05 RESERVE                  (COUNT=001)
TEST06 RESERVE                  (COUNT=001)
TEST07 RESERVE                  (COUNT=001)

```

**Figure 4.6 Diagnostic Program Output Example (E8000 + EVCHIP Test)**

```

TEST08 RESERVE                (COUNT=001)
TEST09 JTAG TEST              (COUNT=001)   OK
TEST10 CONT REG. TEST        (COUNT=001)   OK
TEST11 IDR READ TEST         (COUNT=001)
ID CODE   = 0000F4ED
PC I/F BOARD :CONNECT
TRC BOARD   :CONNECT
DCONT BOARD :CONNECT
EVCH BOARD  :CONNECT
TEST13 TRACE REG. TEST       (COUNT=001)   OK
TEST14 TRACE RAM TEST        (COUNT=001)
    (1) PAUSE TEST           OK
    (2) MARCHING TEST        OK
TEST15 RESERVE                (COUNT=001)
TEST16 EBOX TEST              (COUNT=001)
    (1)BOX ID CODE           OK
    (2)EBOX ID CHECK         OK
    (3)ULSR TEST             OK
    (4)MAPR R/W TEST         OK
TEST17 ERAM WINDOW TEST      (COUNT=001)
    (1)ERAM WINDOW TEST
        (1-0)ERAM CS0 R/W BIG ENDIAM TEST   OK
        (1-1)ERAM CS0 R/W LITTLE ENDIAN TEST OK
        (1-2)ERAM CS1 R/W BIG ENDIAM TEST   OK
        (1-3)ERAM CS1 R/W LITTLE ENDIAN TEST OK
        (1-4)ERAM CS2 R/W BIG ENDIAM TEST   OK
        (1-5)ERAM CS2 R/W LITTLE ENDIAN TEST OK
        (1-6)ERAM CS3 R/W BIG ENDIAM TEST   OK
    (2)ERAM WP TEST          OK
TEST18 ERAM STEP TEST        (COUNT=001) OK
TEST19 ERAM HARD BREAK TEST1 (COUNT=001)
    (1)ASE HW HARDBREAK TEST OK
    (2)CHA0-7 HARDBREAK TEST OK
    (3)CHB0-7 HARDBREAK TEST OK
    (4)CHC0-7 HARDBREAK TEST OK

```

**Figure 4.6 Diagnostic Program Output Example (E8000 + EVCHIP Test) (cont)**

```

TEST20 ERAM HARD BREAK TEST2          (COUNT=001)
      (1)SEQUENTIAL BREAK TEST      OK
      (2)TBM OVERFLOW BREAK TEST    OK
      (3)CHC TIMEOUT BREAK TEST     OK
      (4)CHB0 INTERRUPT TEST        OK
TEST21 ERAM SOFT BREAK TEST           (COUNT=001)   OK
TEST22 COMPULSORY BREAK TEST         (COUNT=001)   OK
TEST23 ERAM TRACE TEST               (COUNT=001)
      (1)RANGE TRACE TEST           OK
      (2)TRACE STOP TEST            OK
      (3)SEQUENTIAL TRACE STOP TEST OK
      (4)RAR OVERFLOW TRACE STOP TEST OK
      (5)TIMEOUT TRACE STOP TEST     OK
      (6)ERAM DATA CONTINUOUS ACCESS TEST OK
TEST24 ERAM TIME MEASURE TEST        (COUNT=001)
      (1)SUBROUTINE TIME MEASURE TEST1 OK
      (2)SUBROUTINE TIME MEASURE TEST2 OK
      (3)SUBROUTINE TIME MEASURE TEST3 OK
      (4)SUBROUTINE TIME MEASURE TEST4 OK
      (5)TIME STAMP TEST            OK
TEST25 ERAM PARALLEL MONITOR TEST    (COUNT=001)   OK
TEST26 RESERVE                       (COUNT=001)
TEST27 JTAG CONTROLER TEST           (COUNT=001)   OK
TEST28 RTC TEST                      (COUNT=001)   OK
TEST29 HS8000EMS01H TEST             (COUNT=001)
      (1-0)ERAM W MAPR1 H'0a800000-0aa00000 TEST      OK
      (1-1)ERAM W MAPR1 H'0aa00000-0ac00000 TEST      OK
      (1-2)ERAM W MAPR1 H'0ac00000-0ae00000 TEST      OK
      (1-3)ERAM W MAPR1 H'0ae00000-0b000000 TEST      OK
      (1-4)ERAM W MAPR2 H'15000000-15200000 TEST      OK
      (1-5)ERAM W MAPR2 H'15200000-15400000 TEST      OK
      (1-6)ERAM W MAPR2 H'15400000-15600000 TEST      OK
      (1-7)ERAM W MAPR2 H'15600000-15800000 TEST      OK
      (1-0)ERAM R MAPR1 H'0a800000-0aa00000 TEST      OK
      (1-1)ERAM R MAPR1 H'0aa00000-0ac00000 TEST      OK
      (1-2)ERAM R MAPR1 H'0ac00000-0ae00000 TEST      OK

```

**Figure 4.6 Diagnostic Program Output Example (E8000 + EVCHIP Test) (cont)**

```

(1-3)ERAM R MAPR1 H'0ae00000-0b000000 TEST      OK
(1-4)ERAM R MAPR2 H'15000000-15200000 TEST      OK
(1-5)ERAM R MAPR2 H'15200000-15400000 TEST      OK
(1-6)ERAM R MAPR2 H'15400000-15600000 TEST      OK
(1-7)ERAM R MAPR2 H'15600000-15800000 TEST      OK
(2)ERAM R/W MAPR WP TEST                          OK
TEST30 EMCLK TEST                                (COUNT=001)  OK
TEST31 RESERVE(COUNT=001)
TEST01 FLASH MEMORY READ TEST   (COUNT=002)
(a)                (b)                (c)
(1)MONITOR SUM CHECK                                OK
                                                    (d)

```

**Figure 4.6 Diagnostic Program Output Example (E8000 + EVCHIP Test) (cont)**

**Description:**

- (a) Test item number
- (b) Test item
- (c) Execution count
- (d) Test result

# Section 5 Error Handling

## 5.1 Acquiring Execution Results and Printing Them

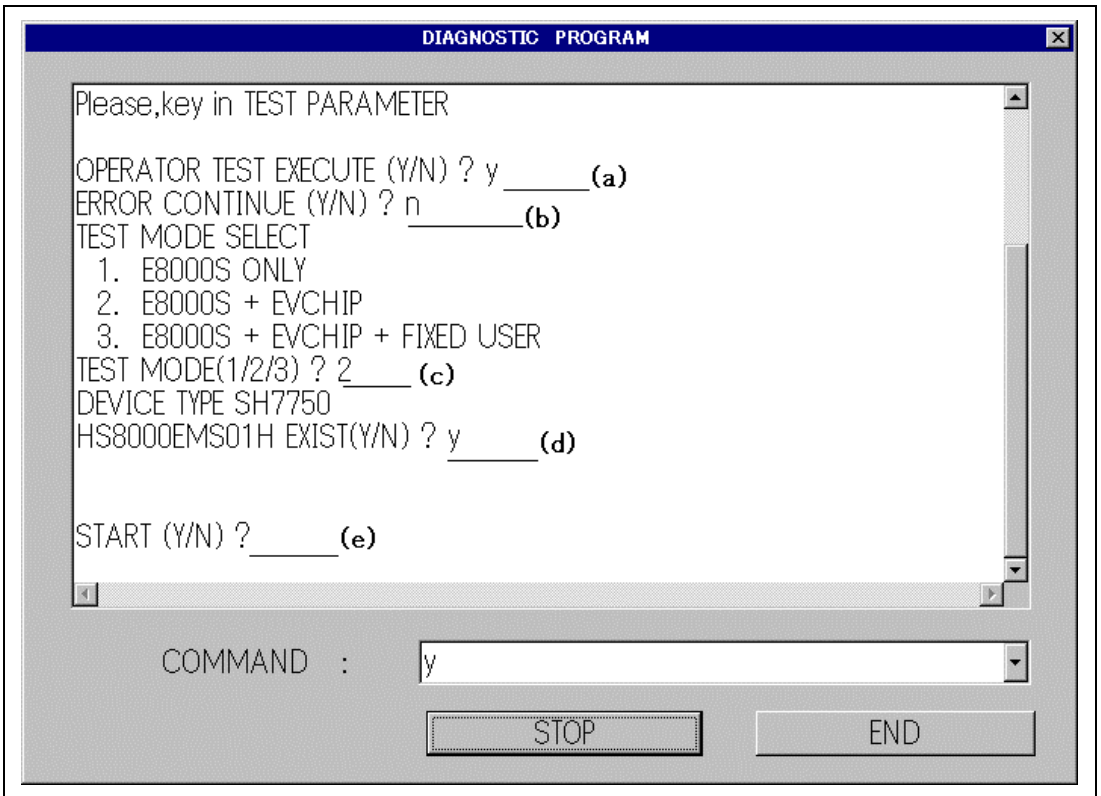
If an error occurs, provide a Hitachi sales agency with a detailed description of the problem.

The description given below is about the procedure to acquire execution results and print them.

### 5.1.1 Acquiring Diagnostic Program Execution Results

(a) Select test conditions as shown in figure 5.1.

Always select N for ERROR CONTINUE (Y/N) ? so that test will stop when an error occurs.



The image shows a screenshot of a diagnostic program window titled "DIAGNOSTIC PROGRAM". The window contains a text-based interface for setting test parameters. The text is as follows:

```
Please,key in TEST PARAMETER  
OPERATOR TEST EXECUTE (Y/N) ? y _____ (a)  
ERROR CONTINUE (Y/N) ? n _____ (b)  
TEST MODE SELECT  
  1. E8000S ONLY  
  2. E8000S + EVCHIP  
  3. E8000S + EVCHIP + FIXED USER  
TEST MODE(1/2/3) ? 2 _____ (c)  
DEVICE TYPE SH7750  
HS8000EMS01H EXIST(Y/N) ? y _____ (d)  
  
START (Y/N) ? _____ (e)
```

At the bottom of the window, there is a "COMMAND" field with the value "y" entered. Below the command field are two buttons: "STOP" and "END".

**Figure 5.1 Testing Condition**

(b) Execute the diagnostic program.

(c) When the test stops after an error occurs, cut and paste where the error occurred in the text file (TM.LOG) and create a file.



### **5.1.2 Printing Execution Results**

Open the diagnostic file including the error results of the diagnostic program and print it out from the host computer used.