

To our customers,

---

## Old Company Name in Catalogs and Other Documents

---

On April 1<sup>st</sup>, 2010, NEC Electronics Corporation merged with Renesas Technology Corporation, and Renesas Electronics Corporation took over all the business of both companies. Therefore, although the old company name remains in this document, it is a valid Renesas Electronics document. We appreciate your understanding.

Renesas Electronics website: <http://www.renesas.com>

April 1<sup>st</sup>, 2010  
Renesas Electronics Corporation

Issued by: Renesas Electronics Corporation (<http://www.renesas.com>)

Send any inquiries to <http://www.renesas.com/inquiry>.

## Notice

1. All information included in this document is current as of the date this document is issued. Such information, however, is subject to change without any prior notice. Before purchasing or using any Renesas Electronics products listed herein, please confirm the latest product information with a Renesas Electronics sales office. Also, please pay regular and careful attention to additional and different information to be disclosed by Renesas Electronics such as that disclosed through our website.
2. Renesas Electronics does not assume any liability for infringement of patents, copyrights, or other intellectual property rights of third parties by or arising from the use of Renesas Electronics products or technical information described in this document. No license, express, implied or otherwise, is granted hereby under any patents, copyrights or other intellectual property rights of Renesas Electronics or others.
3. You should not alter, modify, copy, or otherwise misappropriate any Renesas Electronics product, whether in whole or in part.
4. Descriptions of circuits, software and other related information in this document are provided only to illustrate the operation of semiconductor products and application examples. You are fully responsible for the incorporation of these circuits, software, and information in the design of your equipment. Renesas Electronics assumes no responsibility for any losses incurred by you or third parties arising from the use of these circuits, software, or information.
5. When exporting the products or technology described in this document, you should comply with the applicable export control laws and regulations and follow the procedures required by such laws and regulations. You should not use Renesas Electronics products or the technology described in this document for any purpose relating to military applications or use by the military, including but not limited to the development of weapons of mass destruction. Renesas Electronics products and technology may not be used for or incorporated into any products or systems whose manufacture, use, or sale is prohibited under any applicable domestic or foreign laws or regulations.
6. Renesas Electronics has used reasonable care in preparing the information included in this document, but Renesas Electronics does not warrant that such information is error free. Renesas Electronics assumes no liability whatsoever for any damages incurred by you resulting from errors in or omissions from the information included herein.
7. Renesas Electronics products are classified according to the following three quality grades: “Standard”, “High Quality”, and “Specific”. The recommended applications for each Renesas Electronics product depends on the product’s quality grade, as indicated below. You must check the quality grade of each Renesas Electronics product before using it in a particular application. You may not use any Renesas Electronics product for any application categorized as “Specific” without the prior written consent of Renesas Electronics. Further, you may not use any Renesas Electronics product for any application for which it is not intended without the prior written consent of Renesas Electronics. Renesas Electronics shall not be in any way liable for any damages or losses incurred by you or third parties arising from the use of any Renesas Electronics product for an application categorized as “Specific” or for which the product is not intended where you have failed to obtain the prior written consent of Renesas Electronics. The quality grade of each Renesas Electronics product is “Standard” unless otherwise expressly specified in a Renesas Electronics data sheets or data books, etc.
  - “Standard”: Computers; office equipment; communications equipment; test and measurement equipment; audio and visual equipment; home electronic appliances; machine tools; personal electronic equipment; and industrial robots.
  - “High Quality”: Transportation equipment (automobiles, trains, ships, etc.); traffic control systems; anti-disaster systems; anti-crime systems; safety equipment; and medical equipment not specifically designed for life support.
  - “Specific”: Aircraft; aerospace equipment; submersible repeaters; nuclear reactor control systems; medical equipment or systems for life support (e.g. artificial life support devices or systems), surgical implantations, or healthcare intervention (e.g. excision, etc.), and any other applications or purposes that pose a direct threat to human life.
8. You should use the Renesas Electronics products described in this document within the range specified by Renesas Electronics, especially with respect to the maximum rating, operating supply voltage range, movement power voltage range, heat radiation characteristics, installation and other product characteristics. Renesas Electronics shall have no liability for malfunctions or damages arising out of the use of Renesas Electronics products beyond such specified ranges.
9. Although Renesas Electronics endeavors to improve the quality and reliability of its products, semiconductor products have specific characteristics such as the occurrence of failure at a certain rate and malfunctions under certain use conditions. Further, Renesas Electronics products are not subject to radiation resistance design. Please be sure to implement safety measures to guard them against the possibility of physical injury, and injury or damage caused by fire in the event of the failure of a Renesas Electronics product, such as safety design for hardware and software including but not limited to redundancy, fire control and malfunction prevention, appropriate treatment for aging degradation or any other appropriate measures. Because the evaluation of microcomputer software alone is very difficult, please evaluate the safety of the final products or system manufactured by you.
10. Please contact a Renesas Electronics sales office for details as to environmental matters such as the environmental compatibility of each Renesas Electronics product. Please use Renesas Electronics products in compliance with all applicable laws and regulations that regulate the inclusion or use of controlled substances, including without limitation, the EU RoHS Directive. Renesas Electronics assumes no liability for damages or losses occurring as a result of your noncompliance with applicable laws and regulations.
11. This document may not be reproduced or duplicated, in any form, in whole or in part, without prior written consent of Renesas Electronics.
12. Please contact a Renesas Electronics sales office if you have any questions regarding the information contained in this document or Renesas Electronics products, or if you have any other inquiries.

(Note 1) “Renesas Electronics” as used in this document means Renesas Electronics Corporation and also includes its majority-owned subsidiaries.

(Note 2) “Renesas Electronics product(s)” means any product developed or manufactured by or for Renesas Electronics.

**Phase-out/Discontinued**

# **EP-754304GS-R**

## **EMULATION PROBE**

The export of this product from Japan is prohibited without governmental license. To export or re-export this product from a country other than Japan may also be prohibited without a license from that country. Please call an NEC sales representative.

**The information in this document is subject to change without notice.**

No part of this document may be copied or reproduced in any form or by any means without the prior written consent of NEC Corporation. NEC Corporation assumes no responsibility for any errors which may appear in this document.

NEC Corporation does not assume any liability for infringement of patents, copyrights or other intellectual property rights of third parties by or arising from use of a device described herein or any other liability arising from use of such device. No license, either express, implied or otherwise, is granted under any patents, copyrights or other intellectual property rights of NEC Corporation or of others.

**Phase-out/Discontinued**

## INTRODUCTION

**Intended Reader** This manual is intended for use by users of  $\mu$ PD754304 subseries debugging using the IE-75001-R + IE-75300-R-EM and EP-754304GS-R.

**Remark** The IE-75001-R is a product equivalent to the IE-75000-R (maintenance product) with the IE-75000-R-EM removed. The IE-75000-R can be substituted for the IE-75001-R. In this case, replace the IE-75000-R-EM incorporated in the IE-75000-R with the IE-75300-R-EM.

**Purpose** This manual provides an understanding of the method for connecting the EP-754304GS-R to the IE-75001-R + IE-75300-R-EM and methods for setting mask options.

**Organization** The contents of this manual can be roughly divided under the following general headings.

General description  
Methods for connecting this product  
Methods for setting mask options

**Using this Manual** Before reading this manual, be sure to read the manual for the IE-75001-R or IE-75300-R-EM and get a thorough understanding of the configuration and functions of the debugging system.

<p>When using the IE-75000-R as an in-circuit emulator, "IE-75001-R" should be read as "IE-75000-R".</p> <p>Unless specified otherwise, "IE-75001-R" means "IE-75001-R + IE-75300-R-EM".</p>
--

- When desiring to understand general EP-754304GS-R functions and connection methods:  
→ Read in accordance with the table of contents.
- When desiring to understand the operating environment, configuration and object devices:  
→ Read **CHAPTER 1 GENERAL DESCRIPTION**.
- When desiring to understand in detail how to understand the connection method:  
→ Read **CHAPTER 2 CONNECTIONS**.
- When desiring to understand the mask option setting method:  
→ Read **CHAPTER 3 SETTING THE MASK OPTIONS**.

**Legend**

**Note** : Provides additional important information.

**Caution** : Contains especially important information.

**Remark** : Provides a supplementary explanation for the text.

**Related Documents**

- IE-75000-R/IE-75001-R User's Manual (Document No.: EEU-1455)
- IE-75300-R-EM User's Manual (Document No.: EEU-1493)

**Confirmation**

The following items are included in the EP-754304GS-R packing box. Check the items carefully. If any item is missing or damaged, be sure to contact this company's sales representative or authorized dealer.

- |   |   |
|---|---|
| • Emulation probe                             | 1 |
| • Adaptor board                               | 1 |
| • User's manual (This manual)                 | 1 |
| • Spacer (with 2 screws) <b>Note 1</b>        | 1 |
| • Installation screws <b>Note 2</b>           | 2 |
| • Flexible board <b>Note 3</b> (EV-9500GS-36) | 1 |

**Notes 1.** Used to connect the adaptor board and the IE-75000-R-EM.

**2.** Used to connect the emulation probe and the IE-75001-R.

**3.** Used to connect the emulation probe and the target system.

**CONTENTS**

<b>CHAPTER 1 GENERAL DESCRIPTION .....</b>	<b>1</b>
1.1 OPERATING ENVIRONMENT .....	1
1.2 CONFIGURATION .....	1
1.3 TARGET DEVICES .....	3
<b>CHAPTER 2 CONNECTIONS .....</b>	<b>5</b>
2.1 CONNECTION TO THE IE-75001-R AND TARGET SYSTEM .....	5
2.2 POWER ON AND OFF SEQUENCE .....	9
2.3 DISCONNECTING THE EMULATION PROBE FROM THE TARGET SYSTEM .....	10
<b>CHAPTER 3 SETTING MASK OPTIONS .....</b>	<b>11</b>
3.1 SETTING THE PORT 5 MASK OPTION .....	11
<b>APPENDIX EMULATION PROBE PIN ARRANGEMENT TABLE .....</b>	<b>13</b>



[MEMO]

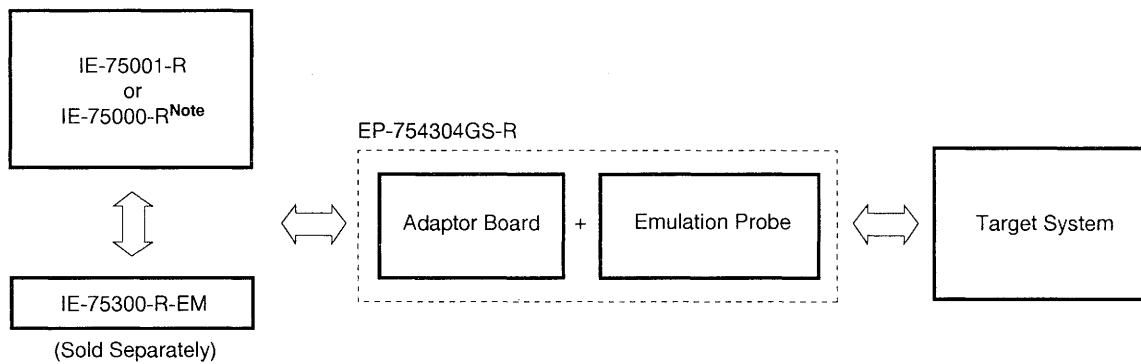
## CHAPTER 1 GENERAL DESCRIPTION

This chapter gives an outline of the EP-754304GS-R.

### 1.1 OPERATING ENVIRONMENT

The EP-754304GS-R is a probe set designed for connection with the IE-75001-R and target system. By using the EP-754304GS-R in such connections, a debugging environment for the  $\mu$ PD754304 subseries is created making comprehensive debugging of target system hardware and software possible. See **CHAPTER 2 CONNECTIONS**, concerning concrete connection methods.

**Figure 1-1. Connection to the IE-75001-R and Target System**



**Note** Replace the IE-75000-R-EM incorporated in the IE-75000-R with the IE-75300-R-EM.

### 1.2 CONFIGURATION

The EP-754304GS-R is a set consisting of a emulation probe and an adaptor board.

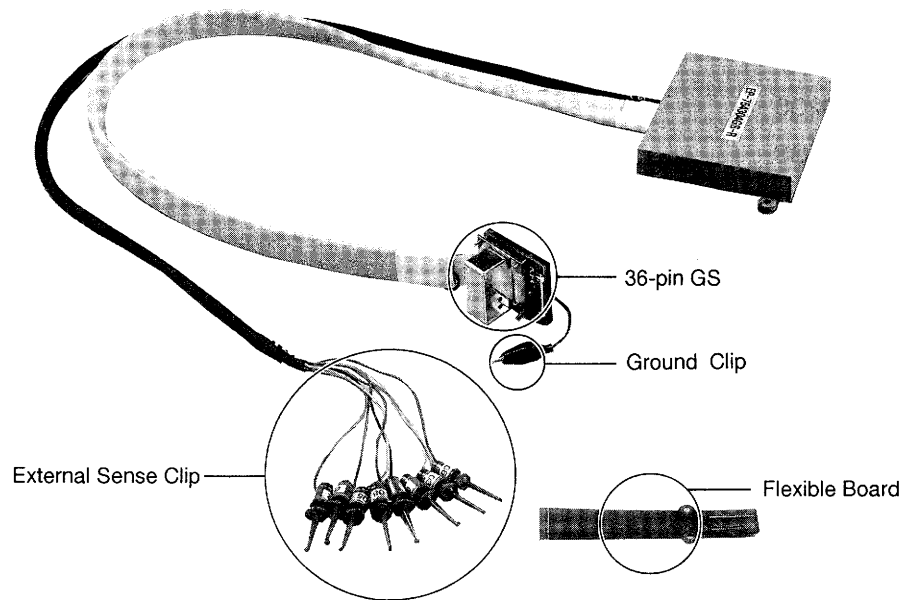
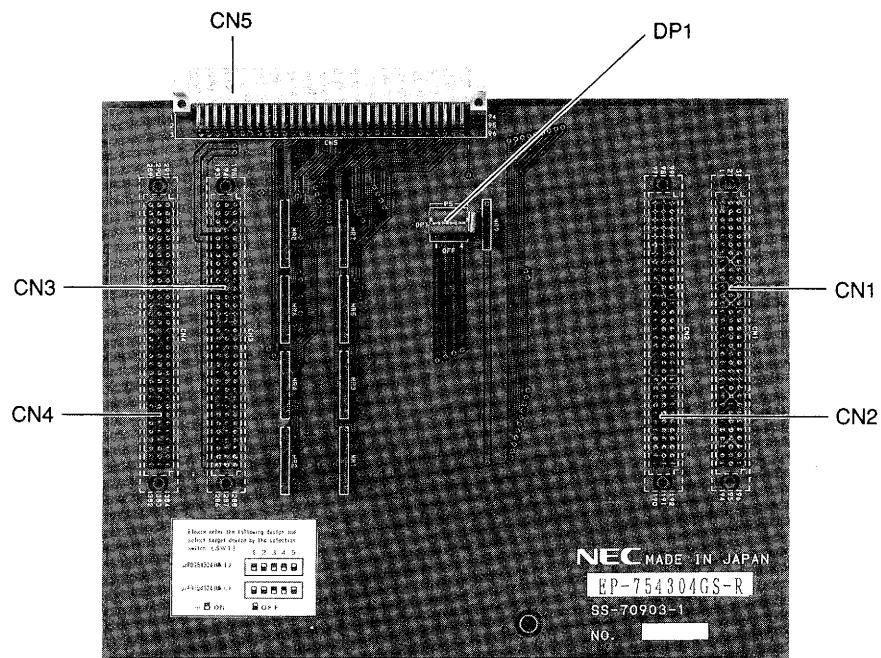
#### (1) Emulation Probe

The emulation probe is configured from the following 3 components.

- **36-pin GS probe**  
This connects the IE-75001-R and target system.
- **Ground clip**  
This connects to the target system's GND. This makes the GND potential of the IE-75001-R and the target system the same, and protects the system against static electricity and noise.
- **External sense clips**  
This consists of 8 sense clips. These clips are used to monitor the IC pin voltage level of the target system.

#### (2) Adaptor Board

The adaptor board is used to connect the emulation probe to the emulation board (IE-75300-R-EM). The adaptor board also includes functions to set mask options. For details, see **CHAPTER 3 SETTING MASK OPTIONS**.

**Figure 1-2. Emulation Probe and Flexible Board****Figure 1-3. Adaptor Board**

### 1.3 TARGET DEVICES

The EP-754304GS-R is used in emulation of the following target devices (as of July 1995).

- $\mu$ PD754302GS
- $\mu$ PD754304GS
- $\mu$ PD75P4308GS<sup>Note</sup>

**Note** Under development

[MEMO]

## CHAPTER 2 CONNECTIONS

EP-754304GS-R, the sequence for switching on the power and switching it off and the method used to disconnect the emulation probe from the emulation system.

### 2.1 CONNECTION TO THE IE-75001-R AND TARGET SYSTEM

The connection procedure is outlined as follows.

- (1) Connection of the IE-75300-R-EM and adaptor board
- (2) Connecting the IE-75001-R and the emulation probe
- (3) Connecting the emulation probe and target system
- (4) Connecting the external sense clip (if the external sense clip is used)
- (5) Switching on the power

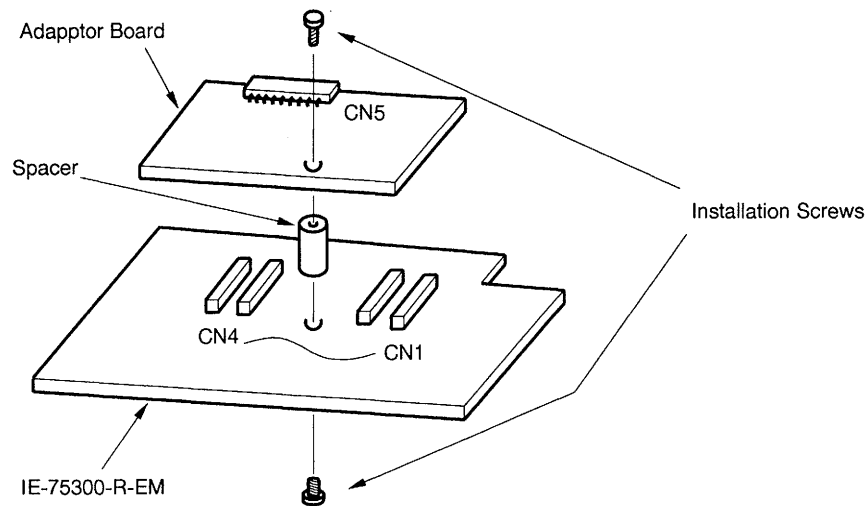
Next, details of each item in the connection procedure are explained.

#### (1) Connecting the IE-75300-R-EM and Adaptor Board

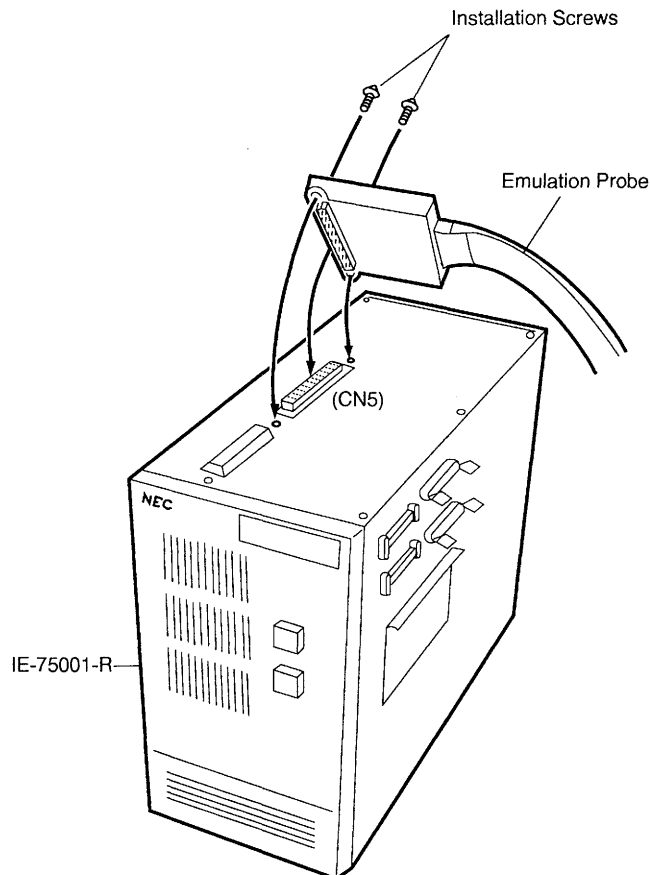
Connect the adaptor board to the IE-75300-R-EM.

- <1> While placing a spacer between the IE-75300-R-EM and the adaptor board, connect connectors CN1 to CN4 of the IE-75300-R-EM to connectors CN1 to CN4 of the adaptor board.
- <2> Fasten the spacer between the IE-75300-R-EM and the adaptor board using the spacer installation screws.
- <3> First, switch off the IE-75001-R's power.
- <4> Take out the 6 screws in the top of the IE-75001-R unit, then open the unit's top cover.
- <5> Pull the card pullers on both ends of the board forward and pull out the IE-75000-R-BK<sup>Note</sup>.
- <6> Screw the IE-75300-R-EM to the IE-75000-R-BK together.
- <7> Return the IE-75000-R-BK with the IE-75300-R-EM to the original position of the IE-75001-R.

**Note** In the case of the IE-75000-R, the IE-75000-R-EM and IE-75000-R-BK are installed screw together. Therefore, pull out the IE-75000-R-BK from the main unit in above steps <3> → <4> → <5>, screw off and remove the IE-75000-R-EM before following steps <1> → <2> → <6> → <7>.

**Figure 2-1. Connecting the IE-75300-R-EM and the Adaptor Board****(2) Connecting the IE-75001-R and Emulation Probe**

- <1> Connect the emulation probe to the emulation probe DIN connector (CN5 of the adaptor board) on the top of the IE-75001-R.
- <2> After connection, be sure to fasten the emulation probe to the IE-75001-R with the installation screws provided.

**Figure 2-2. Connecting the IE-75001-R and Emulation Probe**

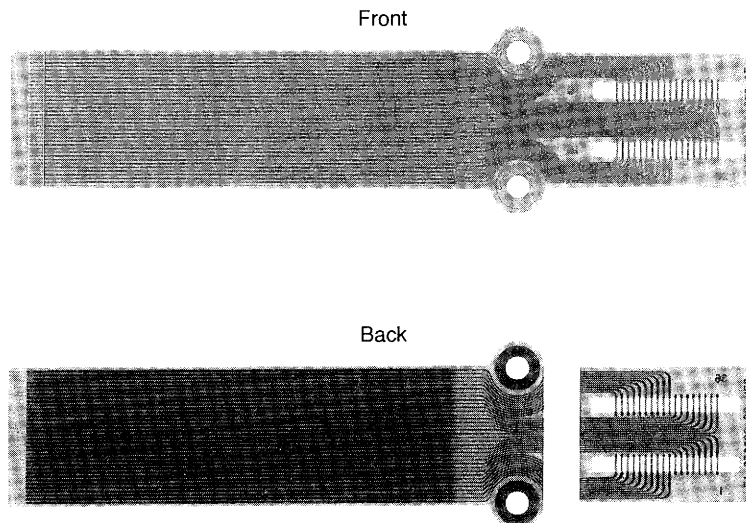
### (3) Connecting the Emulation Probe and Target System

Connect the emulation probe to the target system by the following procedure.

- Cautions**
1. Before connecting the emulation probe to the target system, be sure to connect the ground clip. If the ground clip is not connected, the IE-75001-R could be damaged by static electricity, etc.
  2. When making connections, be careful not to reverse the pins. If connections are incorrect, it could damage the IE-75001-R.

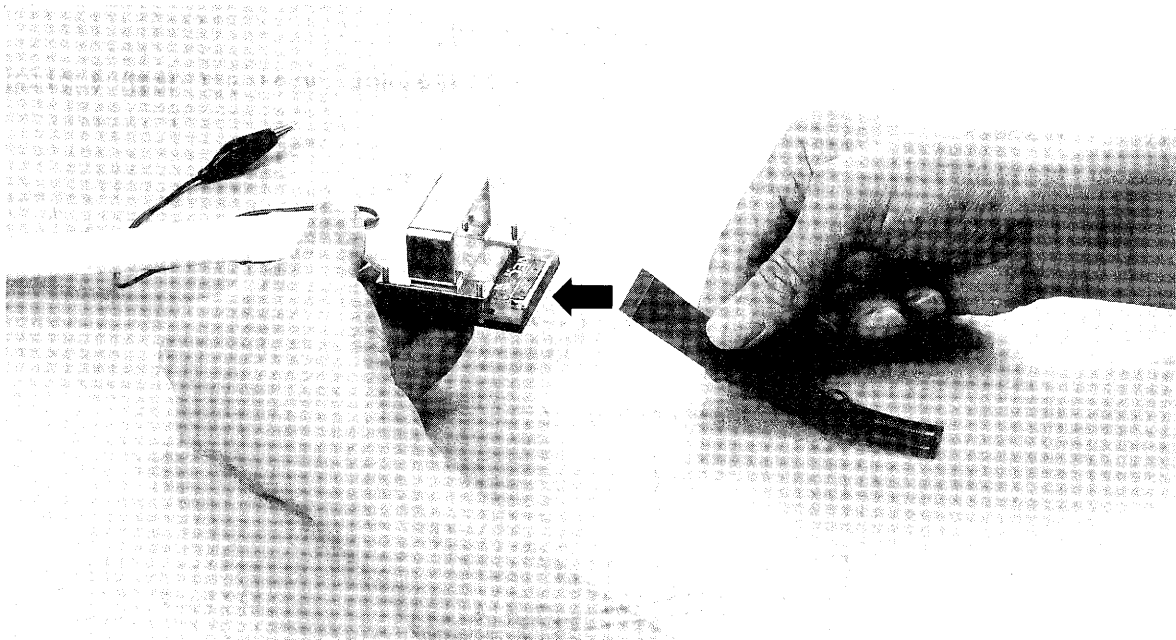
- <1> Switch off the target system's power supply.  
<2> Solder the flexible board (EV-9500GS-36) to the target system.

Figure 2-3. Flexible Board



- <3> Connect the emulation probe's ground clip to the ground (GND) pin of the target system.  
<4> Insert into the emulation probe connector under the solder-plated surface of the flexible board soldered on the target system in step <2> in the emulation probe main unit edge connector.



**Figure 2-4. Emulation Probe Connection**

#### **(4) Connecting the External Sense Clip**

The emulation probe is provided with 8 external sense clips which can trace hardware signals on the target system in real time.

Since the external sense clips are directly connected to the input buffer HCT244 inside the in-circuit emulator unit, they are TTL level inputs.

The 8 external sense clips are normally input signal lines. However, by setting the in-circuit emulator OUT command, the signal line of external sense clip 1 can be used as an outgoing trigger output signal line in the case of an event (see the in-circuit emulator manual for details).

- Cautions**
- 1. Connect the external sense clip to a TTL level signal line only. If it is connected to a signal line other than a TTL level signal line, it will not detect the high level and low level accurately. Also, depending on the voltage level, the IE-75001-R's sensor could be damaged.**
  - 2. Before using external sense clip 1 as an external trigger output, ensure that external sense clip 1 is not connected to the signal output line. If it is connected, a fault may result.**

Connect the external sense clip by the following procedure if it is used.

- <1> Switch off the power to the target system, then the IE-75001-R.
- <2> Install the IC clip (commercially available) on the IC in the target system which is to be traced.
- <3> Connect the external sense clip to the IC clip.
- <4> Switch on the power to the IE-75001-R, then the target system.

Diagram illustrating the Target System setup. The system consists of a base unit labeled "Target System" and a vertical assembly labeled "IC Clip". The "IC Clip" is connected to the "Target System" via a cable labeled "IC". An "External Sense Clip" is attached to the "IC Clip" and is connected to the "Target System" via a cable labeled "External Sense Clip".

## 2.2 POWER ON AND OFF SEQUENCE

**Caution** Be sure to follow the correct sequence for switching the power ON and OFF. If the sequence is mistaken, the IE-75001-R could be damaged.

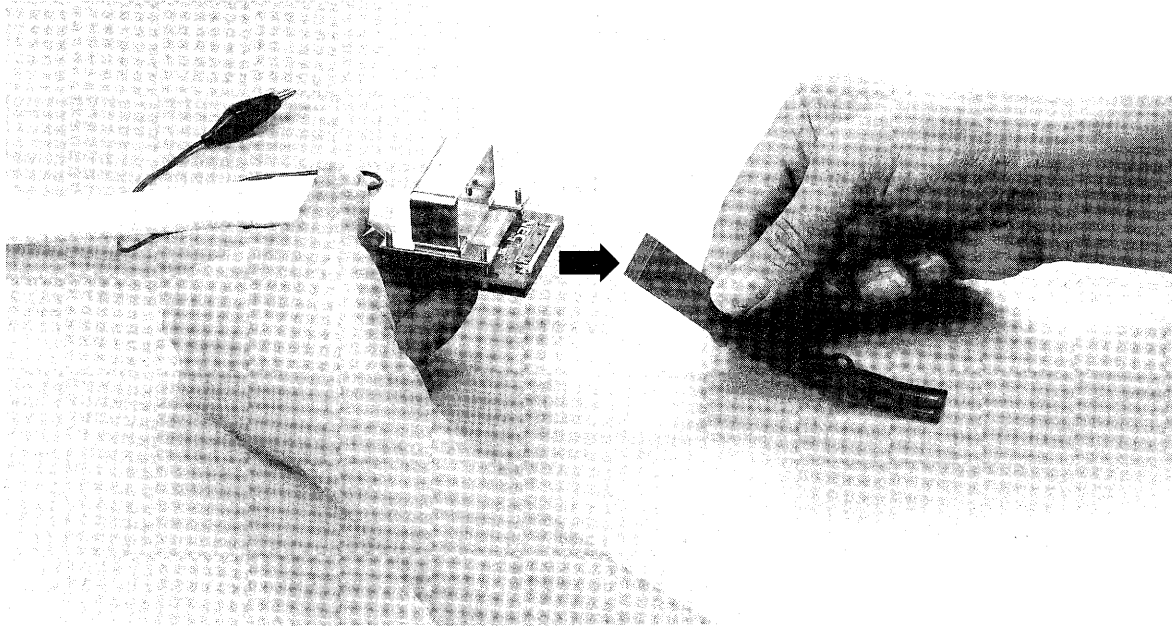
- Power ON sequence
  - <1> Switch on the power to the IE-75001-R.
  - <2> Switch on the power to the target system.
- Power OFF sequence
  - <1> Switch off the power to the target system.
  - <2> Switch off the power to the IE-75001-R.

### 2.3 DISCONNECTING THE EMULATION PROBE FROM THE TARGET SYSTEM

Disconnect the emulation probe from the target system by the following procedure.

- <1> Switch off the power to the target system.
- <2> Switch off the power to the IE-75001-R.
- <3> Pull the flexible board from the connector on the end of the emulation probe.

**Figure 2-6. Disconnecting the Emulation Probe**



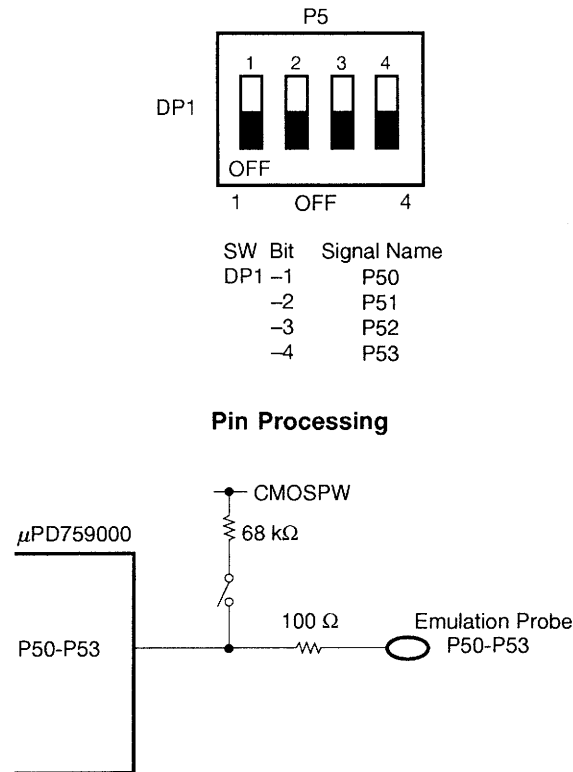
## CHAPTER 3 SETTING MASK OPTIONS

### 3.1 SETTING THE PORT 5 MASK OPTION

The adapter board DP1 switch is the port 5 mask option setting switch. When these switches are switched ON, pull-up resistors (68 k $\Omega$ ) are connected.

At shipping time, the DP1 switches are set in the OFF position.

**Figure 3-1. DP1 Switch Arrangement Diagram**



[MEMO]

**APPENDIX EMULATION PROBE PIN ARRANGEMENT TABLE**

(1/2)

CN5 Pin No.	Emulation Probe	Signal Name	CN5 Pin No.	Emulation Probe	Signal Name	CN5 Pin No.	Emulation Probe	Signal Name
1	GND	GND	25	NC	NC	49	6	P32
2	GND	GND	26			50	7	P31
3	EXT0	EXT0	27			51	8	P30
4	EXT1	EXT1	28			52	9	P81
5	EXT2	EXT2	29			53	NC	NC
6	EXT3	EXT3	30			54		
7	EXT4	EXT4	31			55		
8	EXT5	EXT5	32	31	P61/KR1	56		
9	EXT6	EXT6	33	32	P60/KR0	57		
10	EXT7	EXT7	34	33	P53	58		
11	NC	NC	35	34	P52	59		
12			36	35	P51	60		
13			37	36	P50	61		
14			38	NC	NC	62		
15			39			63		
16			40			64		
17			41			65		
18			42	1	GND	66		
19			43	NC	NC	67		
20			44			68		
21			45	4	RESET	69		
22			46	2	X1	70		
23			47	3	X2	71		
24			48	5	P33	72		

**Remarks 1.** If the IE-75001-R is used, the emulation probe is connected to CN5 connector.

**2.** Symbols and numbers in the emulation probe column mean as follows.

GND : Ground clip

EXT0 to EXT7 : External sense clip No. 1 to No. 8

1 to 36 : Pin No. of 36-pin GS on end of emulation probe

NC : No Connection

(2/2)

CN5 Pin No.	Emulation Probe	Signal Name	CN5 Pin No.	Emulation Probe	Signal Name	CN5 Pin No.	Emulation Probe	Signal Name
73	NC	NC	81	22	P11/INT1	89	25	P73/KR7
74	10	P80	82	21	P10/INT0	90	26	P72/KR6
75	15	P03/SI	83	19	IC	91	27	P71/KR5
76	16	P02/SO/SB0	84	20	V <sub>DD</sub>	92	28	P70/KR4
77	17	P01/ $\overline{\text{SCK}}$	85	11	P23	93	29	P63/KR3
78	18	P00/INT4	96	12	P22/PCL	94	30	P62/KR2
79	24	P13/TI0/TI0	87	13	P21/PTO1	95	GND	GND
80	23	P12/INT2	88	14	P20/PTO0	96	GND	GND

**Remarks** 1. If the IE-75001-R is used, the emulation probe is connected to CN5 connector.

2. Symbols and numbers in the emulation probe column mean as follows.

GND : Ground clip

EXT0 to EXT7 : External sense clip No. 1 to No. 8

1 to 36 : Pin No. of 36-pin GS on end of emulation probe

NC : No Connection

# NEC

## Facsimile Message

From:

Name

Company

Tel.

FAX

Address

Although NEC has taken all possible steps to ensure that the documentation supplied to our customers is complete, bug free and up-to-date, we readily accept that errors may occur. Despite all the care and precautions we've taken, you may encounter problems in the documentation. Please complete this form whenever you'd like to report errors or suggest improvements to us.

**Thank you for your kind support.**

**North America**

NEC Electronics Inc.  
Corporate Communications Dept.  
Fax: 1-800-729-9288

**Hong Kong, Philippines, Oceania**

NEC Electronics Hong Kong Ltd.  
Fax: +852-2886-9022/9044

**Asian Nations except Philippines**

NEC Electronics Singapore Pte. Ltd.  
Fax: +65-250-3583

**Europe**

NEC Electronics (Europe) GmbH  
Technical Documentation Dept.  
Fax: +49-211-6503-274

**Korea**

NEC Electronics Hong Kong Ltd.  
Seoul Branch  
Fax: 02-551-0451

**Japan**

NEC Corporation  
Semiconductor Solution Engineering Division  
Technical Information Support Dept.  
Fax: 044-548-7900

**South America**

NEC do Brasil S.A.  
Fax: +55-11-889-1689

**Taiwan**

NEC Electronics Taiwan Ltd.  
Fax: 02-719-5951

I would like to report the following error/make the following suggestion:

Document title: \_\_\_\_\_

Document number: \_\_\_\_\_ Page number: \_\_\_\_\_

If possible, please fax the referenced page or drawing.

Document Rating	Excellent	Good	Acceptable	Poor
Clarity	<input type="checkbox"/>	<input type="checkbox"/>	<input type="checkbox"/>	<input type="checkbox"/>
Technical Accuracy	<input type="checkbox"/>	<input type="checkbox"/>	<input type="checkbox"/>	<input type="checkbox"/>
Organization	<input type="checkbox"/>	<input type="checkbox"/>	<input type="checkbox"/>	<input type="checkbox"/>



**Phase-out/Discontinued**

**Phase-out/Discontinued**