

## Contents

1. Overview .....	1
2. Start-Up .....	1
3. After Start-Up using Timing Commander .....	2
4. After Start-Up using SPI/I2C Writes .....	3
4.1 After Start-Up Using SPI Writes .....	3
4.2 After Start-Up Using I2C Writes .....	4
5. Revision History .....	4

## 1. Overview

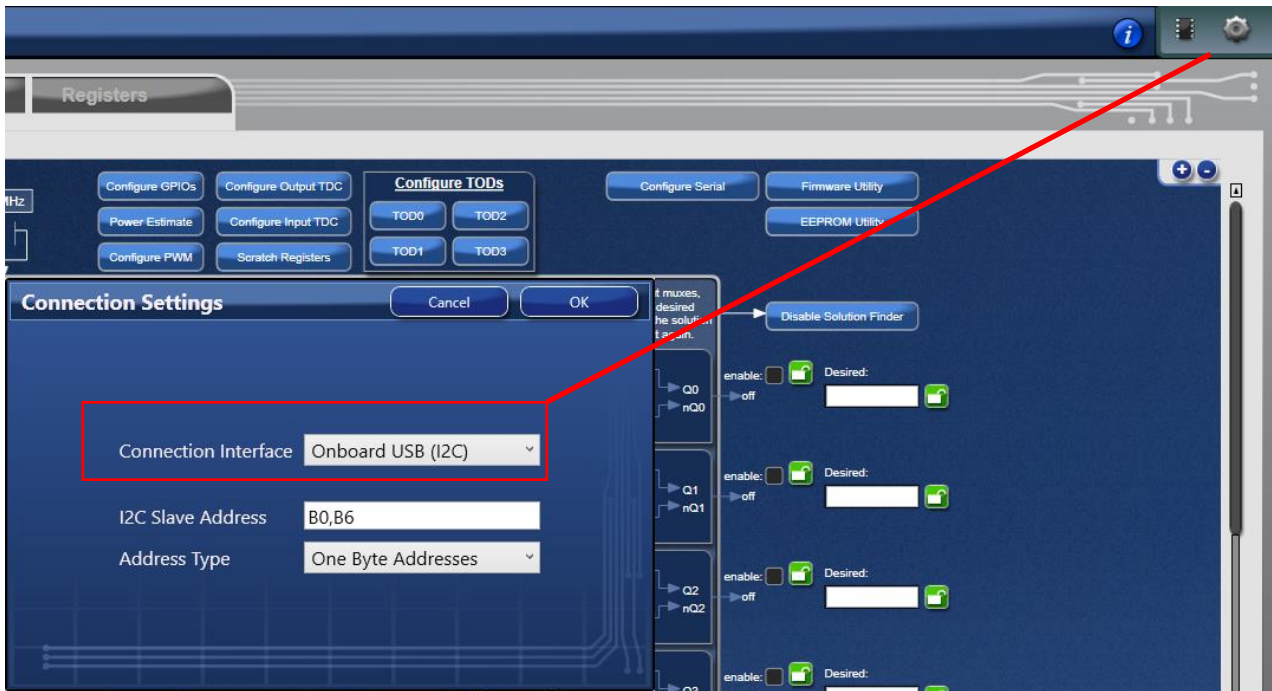
This document explains how to change an 8A3xxxx serial port after start-up. The serial port has the option of being either I2C or SPI. It can also be either 1-byte or 2-byte addressing. The following pages provide step-by-step instructions on how to make these changes.

## 2. Start-Up

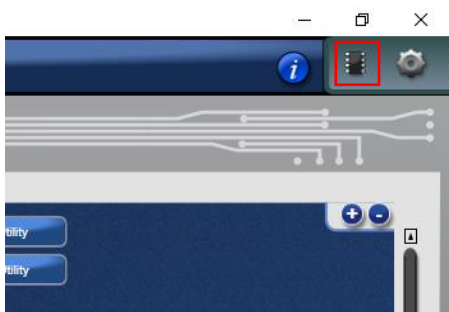
- Two serial ports exist in the 8A3xxxx: SER0 (primary) and SER1 (secondary or auxiliary)
- Both serial ports can be used simultaneously
- GPIO9 determines whether SER0/SER1 will be in I2C or SPI mode upon device start-up only. It has no effect after start-up
- When GPIO9 = HIGH upon device start-up, SER0 uses I2C and SER1 uses SPI
- When GPIO9 = LOW upon device start-up, SER0 uses SPI and SER1 uses I2C
- By default, SER0 and SER1 are one-byte addressing but can be changed to two-byte addressing after start-up
- If required, SER0 and SER1 can both be changed to use I2C or SPI after start-up
- If a reset or power-cycle occurs, all writes to the device are lost and the device starts up with defaults

### 3. After Start-Up using Timing Commander

1. Choose the correct serial port type. Check GPIO9 on the board.



2. Connect to the device.



3. Select the Configure Serial button.



## Changing 8A3xxxx Serial Port after Start-Up User Manual

4. Change the Mode or the Address Size for the Serial port (Serial 0 is default) you are using with the GUI. The Confirm Code will be automatically written to 0xA and you will be prompted to disconnect from the device. This is normal because changing the Serial port can cause a communication error to the device.
5. Reconnect to device using Steps 1 and 2 but choose the changed Mode and Address Size.

### 4. After Start-Up using SPI/I2C Writes

From the Programming Guide, the Base Address and the Offset can be found (for detailed information, see the Programming Guide). The base address can be different depending on the part number.

#### Module: SERIAL

Configure the serial communication ports.

Table 329: SERIAL Register Index

Offset (Hex)	Register Module Base Address CAE0h	
	Individual Register Name	Register Description
000h	SERIAL_I2CM	I2C Master configuration.
001h	RESERVED	This register must not be modified from the read value
002h	SERIAL_SER0	Slave serial interface 0 (main serial port) configuration.
003h	SERIAL_SER0_SPI	SPI configuration for serial interface 0 (main serial port).
004h	SERIAL_SER0_I2C	I2C configuration for serial interface 0 (main serial port).
005h	SERIAL_SER1	Slave serial interface 1 (auxiliary serial port) configuration.
006h	SERIAL_SER1_SPI	SPI configuration for serial interface 1 (auxiliary serial port).
007h	SERIAL_SER1_I2C	I2C configuration for serial interface 1 (auxiliary serial port).
008h	SERIAL_SER_APPLY_CONFIG	Trigger serial configuration changes.

SER0 address size and mode

SER1 address size and mode

Confirm Code for SER0 and SER1

#### 4.1 After Start-Up Using SPI Writes

This example changes Serial Port 0 to SPI two bytes using SPI one-byte writes.

- From the datasheet:
  - The address is 0xCAE2 for Serial Port 0 and the value should be 0x06.
  - The address is 0xCAE8 for the Confirm Code and the value should be 0xA0.
- SPI one-byte writes
  - Line 1: 7C 80 CA 10 20
  - Line 2: 62 06
  - Line 3: 7C 80 CA 10 20
  - Line 4: 68 A0

### 4.2 After Start-Up Using I2C Writes

This example changes Serial Port 1 to I2C two bytes using I2C one-byte writes

- From the datasheet:
  - The address is 0xCAE5 for Serial Port 1 and the value should be 0x06.
  - The address is 0xCAE8 for the Confirm Code and the value should be 0x0A.
- I2C one-byte writes using slave address 0x5B (I2C address is left-shifted one bit 0x5B -> 0xB6)
  - Line 1: B6 FC 00 CA 10 20
  - Line 2: B6 E5 06
  - Line 3: B6 FC 00 CA 10 20
  - Line 4: B6 E8 0A

## 5. Revision History

Revision	Date	Description
1.0	May.14.20	Initial release.

## IMPORTANT NOTICE AND DISCLAIMER

RENESAS ELECTRONICS CORPORATION AND ITS SUBSIDIARIES (“RENESAS”) PROVIDES TECHNICAL SPECIFICATIONS AND RELIABILITY DATA (INCLUDING DATASHEETS), DESIGN RESOURCES (INCLUDING REFERENCE DESIGNS), APPLICATION OR OTHER DESIGN ADVICE, WEB TOOLS, SAFETY INFORMATION, AND OTHER RESOURCES “AS IS” AND WITH ALL FAULTS, AND DISCLAIMS ALL WARRANTIES, EXPRESS OR IMPLIED, INCLUDING, WITHOUT LIMITATION, ANY IMPLIED WARRANTIES OF MERCHANTABILITY, FITNESS FOR A PARTICULAR PURPOSE, OR NON-INFRINGEMENT OF THIRD-PARTY INTELLECTUAL PROPERTY RIGHTS.

These resources are intended for developers who are designing with Renesas products. You are solely responsible for (1) selecting the appropriate products for your application, (2) designing, validating, and testing your application, and (3) ensuring your application meets applicable standards, and any other safety, security, or other requirements. These resources are subject to change without notice. Renesas grants you permission to use these resources only to develop an application that uses Renesas products. Other reproduction or use of these resources is strictly prohibited. No license is granted to any other Renesas intellectual property or to any third-party intellectual property. Renesas disclaims responsibility for, and you will fully indemnify Renesas and its representatives against, any claims, damages, costs, losses, or liabilities arising from your use of these resources. Renesas' products are provided only subject to Renesas' Terms and Conditions of Sale or other applicable terms agreed to in writing. No use of any Renesas resources expands or otherwise alters any applicable warranties or warranty disclaimers for these products.

(Disclaimer Rev.1.01)

### Corporate Headquarters

TOYOSU FORESIA, 3-2-24 Toyosu,  
Koto-ku, Tokyo 135-0061, Japan  
[www.renesas.com](http://www.renesas.com)

### Trademarks

Renesas and the Renesas logo are trademarks of Renesas Electronics Corporation. All trademarks and registered trademarks are the property of their respective owners.

### Contact Information

For further information on a product, technology, the most up-to-date version of a document, or your nearest sales office, please visit [www.renesas.com/contact-us/](http://www.renesas.com/contact-us/).