

Test Report

No.: ETR20C05200

Date: 04-Jan-2021

Page: 1 of 17

OHKUCHI MATERIALS CO., LTD.

1746-2 OHKUCHI-USHIO ISA-CITY KAGOSHIMA. 895-2501 JAPAN

The following sample(s) was/were submitted and identified by/on behalf of the applicant as:

Sample Submitted By : OHKUCHI MATERIALS CO., LTD.
Sample Name : Pd PLATING LAYER
Style/Item No. : SILVER COLOR METAL FOIL ON BASE MATERIAL
Other Info. : THIS TESTING SAMPLE WAS PREPARED BY OHKUCHI MATERIALS CO., LTD.

Sample Receiving Date : 21-Dec-2020
Testing Period : 21-Dec-2020 to 28-Dec-2020

Test Requested : (1) As specified by client, with reference to RoHS 2011/65/EU Annex II and amending Directive (EU) 2015/863 to determine Cadmium, Lead, Mercury, Cr(VI), PBBs, PBDEs, DBP, BBP, DEHP, DIBP contents in the submitted sample(s).
(2) Please refer to next pages for the other item(s).
Test Results : Please refer to following pages.


Troy Chang, Manager, Technical
Signed for and on behalf of
SGS TAIWAN LTD.
Chemical Laboratory - Taipei



PIN CODE: D4141A59

This document is issued by the Company subject to its General Conditions of Service printed overleaf, available on request or accessible at <https://www.sgs.com.tw/terms-of-service> and, for electronic format documents, subject to Terms and Conditions for Electronic Documents at <https://www.sgs.com.tw/terms-of-service>. Attention is drawn to the limitation of liability, indemnification and jurisdiction issues defined therein. Any holder of this document is advised that information contained hereon reflects the Company's findings at the time of its intervention only and within the limits of client's instruction, if any. The Company's sole responsibility is to its Client and this document does not exonerate parties to a transaction from exercising all their rights and obligations under the transaction documents. This document cannot be reproduced, except in full, without prior written approval of the Company. Any unauthorized alteration, forgery or falsification of the content or appearance of this document is unlawful and offenders may be prosecuted to the fullest extent of the law. Unless otherwise stated the results shown in this test report refer only to the sample(s) tested.



Test Report

No.: ETR20C05200

Date: 04-Jan-2021

Page: 2 of 17

OHKUCHI MATERIALS CO., LTD.

1746-2 OHKUCHI-USHIO ISA-CITY KAGOSHIMA. 895-2501 JAPAN

Test Part Description

No.1 : PLATING LAYER OF SILVER COLORED METAL

Test Result(s)

| Test Item(s) | Method | Unit | MDL | Result |
|---|--|--------------------|-----|--------|
| | | | | No.1 |
| Cadmium (Cd) (CAS No.: 7440-43-9) | With reference to IEC 62321-5: 2013, analysis was performed by ICP-OES. | mg/kg | 2 | n.d. |
| Lead (Pb) (CAS No.: 7439-92-1) | With reference to IEC 62321-5: 2013, analysis was performed by ICP-OES. | mg/kg | 2 | n.d. |
| Mercury (Hg) (CAS No.: 7439-97-6) | With reference to IEC 62321-4: 2013+AMD1: 2017, analysis was performed by ICP-OES. | mg/kg | 2 | n.d. |
| Hexavalent Chromium Cr(VI) (CAS No.: 18540-29-9) (#2) | With reference to IEC 62321-7-1: 2015, analysis was performed by UV-VIS. | µg/cm ² | 0.1 | n.d. |
| Monobromobiphenyl | With reference to IEC 62321-6: 2015, analysis was performed by GC/MS. | mg/kg | 5 | n.d. |
| Dibromobiphenyl | | mg/kg | 5 | n.d. |
| Tribromobiphenyl | | mg/kg | 5 | n.d. |
| Tetrabromobiphenyl | | mg/kg | 5 | n.d. |
| Pentabromobiphenyl | | mg/kg | 5 | n.d. |
| Hexabromobiphenyl | | mg/kg | 5 | n.d. |
| Heptabromobiphenyl | | mg/kg | 5 | n.d. |
| Octabromobiphenyl | | mg/kg | 5 | n.d. |
| Nonabromobiphenyl | | mg/kg | 5 | n.d. |
| Decabromobiphenyl | | mg/kg | 5 | n.d. |
| Sum of PBBs | | mg/kg | - | n.d. |
| Monobromodiphenyl ether | | mg/kg | 5 | n.d. |
| Dibromodiphenyl ether | | mg/kg | 5 | n.d. |
| Tribromodiphenyl ether | | mg/kg | 5 | n.d. |
| Tetrabromodiphenyl ether | | mg/kg | 5 | n.d. |
| Pentabromodiphenyl ether | | mg/kg | 5 | n.d. |
| Hexabromodiphenyl ether | | mg/kg | 5 | n.d. |
| Heptabromodiphenyl ether | | mg/kg | 5 | n.d. |
| Octabromodiphenyl ether | | mg/kg | 5 | n.d. |
| Nonabromodiphenyl ether | | mg/kg | 5 | n.d. |
| Decabromodiphenyl ether | | mg/kg | 5 | n.d. |
| Sum of PBDEs | | mg/kg | - | n.d. |

This document is issued by the Company subject to its General Conditions of Service printed overleaf, available on request or accessible at <https://www.sgs.com.tw/terms-of-service> and, for electronic format documents, subject to Terms and Conditions for Electronic Documents at <https://www.sgs.com.tw/terms-of-service>. Attention is drawn to the limitation of liability, indemnification and jurisdiction issues defined therein. Any holder of this document is advised that information contained hereon reflects the Company's findings at the time of its intervention only and within the limits of client's instruction, if any. The Company's sole responsibility is to its Client and this document does not exonerate parties to a transaction from exercising all their rights and obligations under the transaction documents. This document cannot be reproduced, except in full, without prior written approval of the Company. Any unauthorized alteration, forgery or falsification of the content or appearance of this document is unlawful and offenders may be prosecuted to the fullest extent of the law. Unless otherwise stated the results shown in this test report refer only to the sample(s) tested.

Test Report

No.: ETR20C05200

Date: 04-Jan-2021

Page: 3 of 17

OHKUCHI MATERIALS CO., LTD.

1746-2 OHKUCHI-USHIO ISA-CITY KAGOSHIMA. 895-2501 JAPAN

| Test Item(s) | Method | Unit | MDL | Result |
|--|---|-------|-----|--------|
| | | | | No.1 |
| Butyl benzyl phthalate (BBP) (CAS No.: 85-68-7) | With reference to IEC 62321-8: 2017, analysis was performed by GC/MS. | mg/kg | 50 | n.d. |
| Dibutyl phthalate (DBP) (CAS No.: 84-74-2) | With reference to IEC 62321-8: 2017, analysis was performed by GC/MS. | mg/kg | 50 | n.d. |
| Di-(2-ethylhexyl) phthalate (DEHP) (CAS No.: 117-81-7) | With reference to IEC 62321-8: 2017, analysis was performed by GC/MS. | mg/kg | 50 | n.d. |
| Diisobutyl phthalate (DIBP) (CAS No.: 84-69-5) | With reference to IEC 62321-8: 2017, analysis was performed by GC/MS. | mg/kg | 50 | n.d. |
| Diisodecyl phthalate (DIDP) (CAS No.: 26761-40-0, 68515-49-1) | With reference to IEC 62321-8: 2017, analysis was performed by GC/MS. | mg/kg | 50 | n.d. |
| Diisononyl phthalate (DINP) (CAS No.: 28553-12-0, 68515-48-0) | With reference to IEC 62321-8: 2017, analysis was performed by GC/MS. | mg/kg | 50 | n.d. |
| Di-n-octyl phthalate (DNOP) (CAS No.: 117-84-0) | With reference to IEC 62321-8: 2017, analysis was performed by GC/MS. | mg/kg | 50 | n.d. |
| Di-n-hexyl phthalate (DNHP) (CAS No.: 84-75-3) | With reference to IEC 62321-8: 2017, analysis was performed by GC/MS. | mg/kg | 50 | n.d. |
| Bis(2-methoxyethyl) phthalate (DMEP) (CAS No.: 117-82-8) | With reference to IEC 62321-8: 2017, analysis was performed by GC/MS. | mg/kg | 50 | n.d. |
| 1,2-Benzenedicarboxylic acid, di-C7-11-branched and linear alkyl esters (DHNUP) (CAS No.: 68515-42-4) | With reference to IEC 62321-8: 2017, analysis was performed by GC/MS. | mg/kg | 50 | n.d. |
| 1,2-Benzenedicarboxylic acid, di-C6-8-branched alkyl esters, C7-rich (DIHP) (CAS No.: 71888-89-6) | With reference to IEC 62321-8: 2017, analysis was performed by GC/MS. | mg/kg | 50 | n.d. |
| Hexabromocyclododecane (HBCDD) and all major diastereoisomers identified (α - HBCDD, β - HBCDD, γ - HBCDD) (CAS No.: 25637-99-4, 3194-55-6 (134237-51-7, 134237-50-6, 134237-52-8)) | With reference to IEC 62321: 2008, analysis was performed by GC/MS. | mg/kg | 5 | n.d. |
| Fluorine (F) (CAS No.: 14762-94-8) | With reference to BS EN 14582: 2016, analysis was performed by IC. | mg/kg | 50 | n.d. |
| Chlorine (Cl) (CAS No.: 22537-15-1) | | mg/kg | 50 | n.d. |
| Bromine (Br) (CAS No.: 10097-32-2) | | mg/kg | 50 | n.d. |
| Iodine (I) (CAS No.: 14362-44-8) | | mg/kg | 50 | n.d. |

This document is issued by the Company subject to its General Conditions of Service printed overleaf, available on request or accessible at <https://www.sgs.com.tw/terms-of-service> and, for electronic format documents, subject to Terms and Conditions for Electronic Documents at <https://www.sgs.com.tw/terms-of-service>. Attention is drawn to the limitation of liability, indemnification and jurisdiction issues defined therein. Any holder of this document is advised that information contained hereon reflects the Company's findings at the time of its intervention only and within the limits of client's instruction, if any. The Company's sole responsibility is to its Client and this document does not exonerate parties to a transaction from exercising all their rights and obligations under the transaction documents. This document cannot be reproduced, except in full, without prior written approval of the Company. Any unauthorized alteration, forgery or falsification of the content or appearance of this document is unlawful and offenders may be prosecuted to the fullest extent of the law. Unless otherwise stated the results shown in this test report refer only to the sample(s) tested.

Test Report

No.: ETR20C05200

Date: 04-Jan-2021

Page: 4 of 17

OHKUCHI MATERIALS CO., LTD.

1746-2 OHKUCHI-USHIO ISA-CITY KAGOSHIMA. 895-2501 JAPAN

| Test Item(s) | Method | Unit | MDL | Result |
|---|---|-------|-------|----------|
| | | | | No.1 |
| PFOS and its salts (CAS No.: 1763-23-1 and its salts) | With reference to CEN/TS 15968: 2010, analysis was performed by LC/MS/MS. | mg/kg | 0.01 | n.d. |
| PFOA and its salts (CAS No.: 335-67-1 and its salts) | With reference to CEN/TS 15968: 2010, analysis was performed by LC/MS/MS. | mg/kg | 0.01 | n.d. |
| Polychlorinated biphenyls (PCBs) | With reference to US EPA 3550C: 2007, analysis was performed by GC/MS. | mg/kg | 0.5 | n.d. |
| Polychlorinated naphthalene (PCNs) | With reference to US EPA 3550C: 2007, analysis was performed by GC/MS. | mg/kg | 5 | n.d. |
| Polychlorinated terphenyls (PCTs) | With reference to US EPA 3550C: 2007, analysis was performed by GC/MS. | mg/kg | 0.5 | n.d. |
| Short Chain Chlorinated Paraffins(C10-C13) (SCCP) (CAS No.: 85535-84-8) | With reference to US EPA 3550C: 2007, analysis was performed by GC/MS. | mg/kg | 100 | n.d. |
| Tributyl tin (TBT) | With reference to ISO 17353: 2004, analysis was performed by GC/FPD. | mg/kg | 0.03 | n.d. |
| Bis(tributyltin) oxide (TBTO) (CAS No.: 56-35-9) | Calculated from the result of Tributyl Tin (TBT). | mg/kg | 0.03▲ | n.d. |
| Triphenyl tin (TPHT) | With reference to ISO 17353: 2004, analysis was performed by GC/FPD. | mg/kg | 0.03 | n.d. |
| Dibutyl tin (DBT) | With reference to ISO 17353: 2004, analysis was performed by GC/FPD. | mg/kg | 0.03 | n.d. |
| Diocetyl tin (DOT) | With reference to ISO 17353: 2004, analysis was performed by GC/FPD. | mg/kg | 0.03 | n.d. |
| Polyvinyl chloride (PVC) | With reference to ASTM E1252: 2013, analysis was performed by FT-IR and Flame Test. | ** | - | Negative |
| Antimony (Sb) (CAS No.: 7440-36-0) | With reference to US EPA 3050B: 1996, analysis was performed by ICP-OES. | mg/kg | 2 | n.d. |
| Beryllium (Be) (CAS No.: 7440-41-7) | With reference to US EPA 3050B: 1996, analysis was performed by ICP-OES. | mg/kg | 2 | n.d. |
| Arsenic (As) (CAS No.: 7440-38-2) | With reference to US EPA 3052: 1996, analysis was performed by ICP-OES. | mg/kg | 2 | n.d. |

This document is issued by the Company subject to its General Conditions of Service printed overleaf, available on request or accessible at <https://www.sgs.com.tw/terms-of-service> and, for electronic format documents, subject to Terms and Conditions for Electronic Documents at <https://www.sgs.com.tw/terms-of-service>. Attention is drawn to the limitation of liability, indemnification and jurisdiction issues defined therein. Any holder of this document is advised that information contained hereon reflects the Company's findings at the time of its intervention only and within the limits of client's instruction, if any. The Company's sole responsibility is to its Client and this document does not exonerate parties to a transaction from exercising all their rights and obligations under the transaction documents. This document cannot be reproduced, except in full, without prior written approval of the Company. Any unauthorized alteration, forgery or falsification of the content or appearance of this document is unlawful and offenders may be prosecuted to the fullest extent of the law. Unless otherwise stated the results shown in this test report refer only to the sample(s) tested.



Test Report

No.: ETR20C05200

Date: 04-Jan-2021

Page: 5 of 17

OHKUCHI MATERIALS CO., LTD.

1746-2 OHKUCHI-USHIO ISA-CITY KAGOSHIMA. 895-2501 JAPAN

Note :

1. mg/kg = ppm ; 0.1wt% = 1000ppm
2. MDL = Method Detection Limit
3. n.d. = Not Detected (Less than MDL)
4. "-" = Not Regulated
5. **= Qualitative analysis (No Unit)
6. Negative = Undetectable ; Positive = Detectable
7. PFOS and its salts including :
CAS No.: 29081-56-9, 2795-39-3, 29457-72-5, 70225-14-8, 56773-42-3, 251099-16-8, 307-35-7.
8. PFOA and its salts including :
CAS No.: 3825-26-1, 335-95-5, 2395-00-8, 335-93-3, 335-66-0.
9. (#2) =
 - a. The sample is positive for Cr(VI) if the Cr(VI) concentration is greater than 0.13 µg/cm². The sample coating is considered to contain Cr(VI).
 - b. The sample is negative for Cr(VI) if Cr(VI) is n.d. (concentration less than 0.10 µg/cm²). The coating is considered a non-Cr(VI) based coating
 - c. The result between 0.10 µg/cm² and 0.13 µg/cm² is considered to be inconclusive - unavoidable coating variations may influence the determination.
10. ▲ : The MDL was evaluated for element / tested substance.

Conversion Formula : AX = A × F

| AX | A | F |
|------------------------------|--------------------|-------|
| Bis(tributyltin)oxide (TBTO) | Tributyl Tin (TBT) | 1.024 |

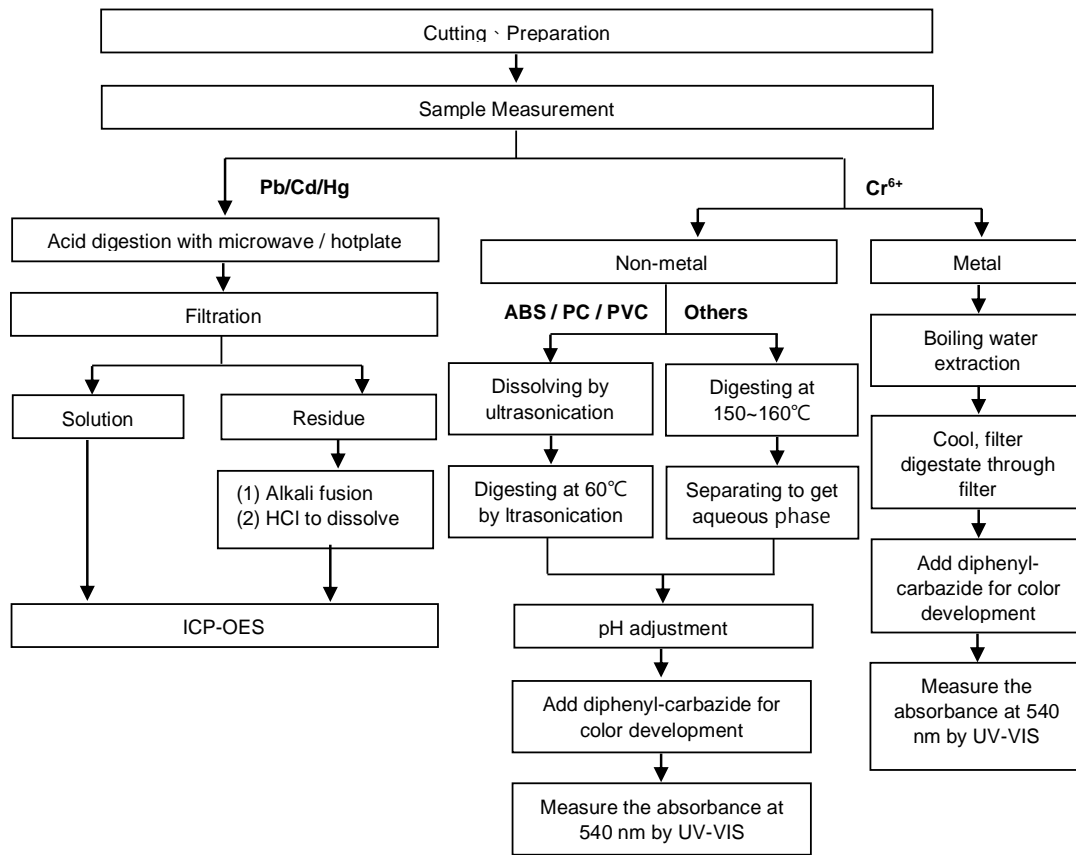
Parameter Conversion Table : https://eecloud.sgs.com/Region_TW/DocDownload.aspx#otherDoc

This document is issued by the Company subject to its General Conditions of Service printed overleaf, available on request or accessible at <https://www.sgs.com.tw/terms-of-service> and, for electronic format documents, subject to Terms and Conditions for Electronic Documents at <https://www.sgs.com.tw/terms-of-service>. Attention is drawn to the limitation of liability, indemnification and jurisdiction issues defined therein. Any holder of this document is advised that information contained hereon reflects the Company's findings at the time of its intervention only and within the limits of client's instruction, if any. The Company's sole responsibility is to its Client and this document does not exonerate parties to a transaction from exercising all their rights and obligations under the transaction documents. This document cannot be reproduced, except in full, without prior written approval of the Company. Any unauthorized alteration, forgery or falsification of the content or appearance of this document is unlawful and offenders may be prosecuted to the fullest extent of the law. Unless otherwise stated the results shown in this test report refer only to the sample(s) tested.

Analytical flow chart of Heavy Metal

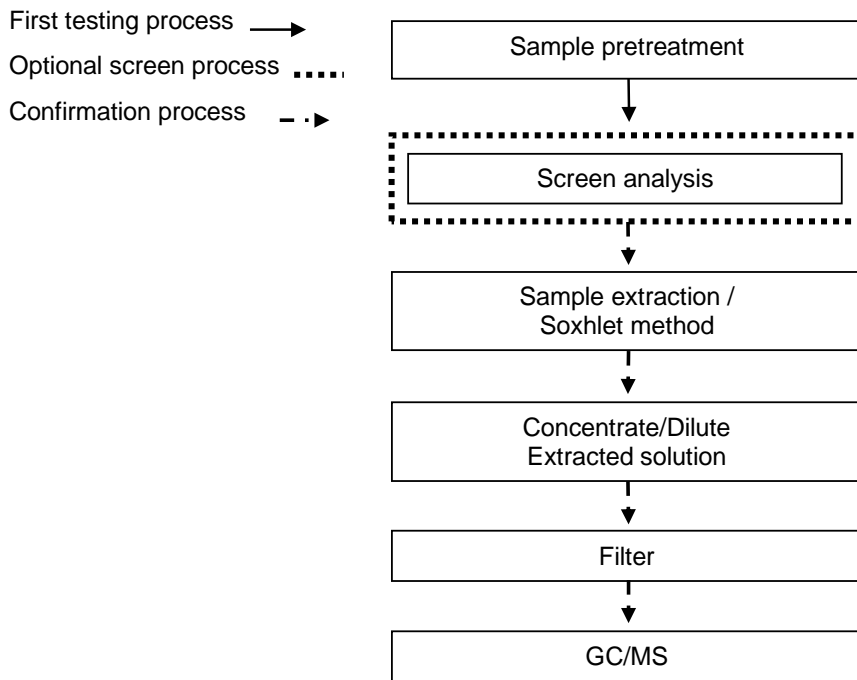
These samples were dissolved totally by pre-conditioning method according to below flow chart.

(Cr⁶⁺ test method excluded)



This document is issued by the Company subject to its General Conditions of Service printed overleaf, available on request or accessible at <https://www.sgs.com.tw/terms-of-service> and, for electronic format documents, subject to Terms and Conditions for Electronic Documents at <https://www.sgs.com.tw/terms-of-service>. Attention is drawn to the limitation of liability, indemnification and jurisdiction issues defined therein. Any holder of this document is advised that information contained hereon reflects the Company's findings at the time of its intervention only and within the limits of client's instruction, if any. The Company's sole responsibility is to its Client and this document does not exonerate parties to a transaction from exercising all their rights and obligations under the transaction documents. This document cannot be reproduced, except in full, without prior written approval of the Company. Any unauthorized alteration, forgery or falsification of the content or appearance of this document is unlawful and offenders may be prosecuted to the fullest extent of the law. Unless otherwise stated the results shown in this test report refer only to the sample(s) tested.

Analytical flow chart – PBBs / PBDEs

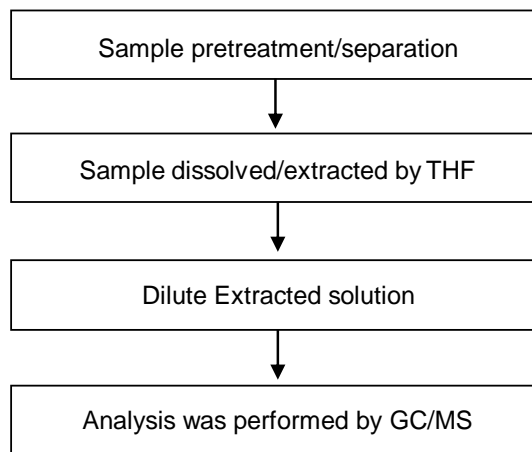


This document is issued by the Company subject to its General Conditions of Service printed overleaf, available on request or accessible at <https://www.sgs.com.tw/terms-of-service> and, for electronic format documents, subject to Terms and Conditions for Electronic Documents at <https://www.sgs.com.tw/terms-of-service>. Attention is drawn to the limitation of liability, indemnification and jurisdiction issues defined therein. Any holder of this document is advised that information contained hereon reflects the Company's findings at the time of its intervention only and within the limits of client's instruction, if any. The Company's sole responsibility is to its Client and this document does not exonerate parties to a transaction from exercising all their rights and obligations under the transaction documents. This document cannot be reproduced, except in full, without prior written approval of the Company. Any unauthorized alteration, forgery or falsification of the content or appearance of this document is unlawful and offenders may be prosecuted to the fullest extent of the law. Unless otherwise stated the results shown in this test report refer only to the sample(s) tested.

OHKUCHI MATERIALS CO., LTD.

1746-2 OHKUCHI-USHIO ISA-CITY KAGOSHIMA. 895-2501 JAPAN

Analytical flow chart - Phthalate

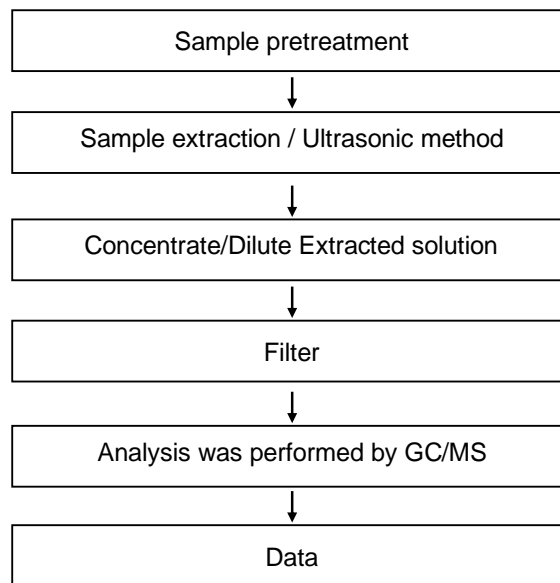
【Test method: IEC 62321-8】

This document is issued by the Company subject to its General Conditions of Service printed overleaf, available on request or accessible at <https://www.sgs.com.tw/terms-of-service> and, for electronic format documents, subject to Terms and Conditions for Electronic Documents at <https://www.sgs.com.tw/terms-of-service>. Attention is drawn to the limitation of liability, indemnification and jurisdiction issues defined therein. Any holder of this document is advised that information contained hereon reflects the Company's findings at the time of its intervention only and within the limits of client's instruction, if any. The Company's sole responsibility is to its Client and this document does not exonerate parties to a transaction from exercising all their rights and obligations under the transaction documents. This document cannot be reproduced, except in full, without prior written approval of the Company. Any unauthorized alteration, forgery or falsification of the content or appearance of this document is unlawful and offenders may be prosecuted to the fullest extent of the law. Unless otherwise stated the results shown in this test report refer only to the sample(s) tested.

OHKUCHI MATERIALS CO., LTD.

1746-2 OHKUCHI-USHIO ISA-CITY KAGOSHIMA. 895-2501 JAPAN

Analytical flow chart - HBCDD

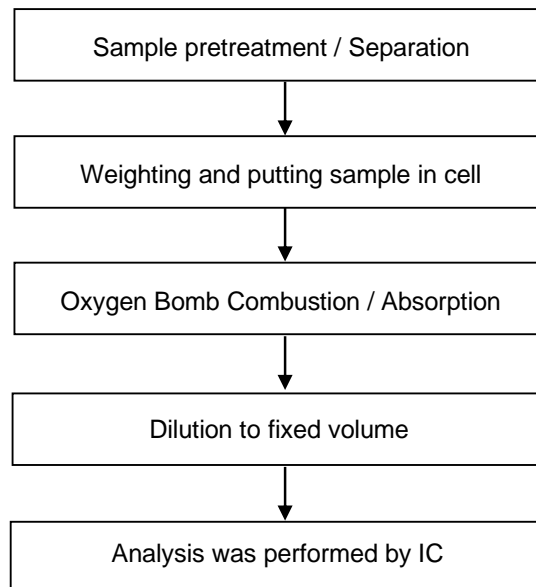


This document is issued by the Company subject to its General Conditions of Service printed overleaf, available on request or accessible at <https://www.sgs.com.tw/terms-of-service> and, for electronic format documents, subject to Terms and Conditions for Electronic Documents at <https://www.sgs.com.tw/terms-of-service>. Attention is drawn to the limitation of liability, indemnification and jurisdiction issues defined therein. Any holder of this document is advised that information contained hereon reflects the Company's findings at the time of its intervention only and within the limits of client's instruction, if any. The Company's sole responsibility is to its Client and this document does not exonerate parties to a transaction from exercising all their rights and obligations under the transaction documents. This document cannot be reproduced, except in full, without prior written approval of the Company. Any unauthorized alteration, forgery or falsification of the content or appearance of this document is unlawful and offenders may be prosecuted to the fullest extent of the law. Unless otherwise stated the results shown in this test report refer only to the sample(s) tested.

OHKUCHI MATERIALS CO., LTD.

1746-2 OHKUCHI-USHIO ISA-CITY KAGOSHIMA. 895-2501 JAPAN

Analytical flow chart - Halogen

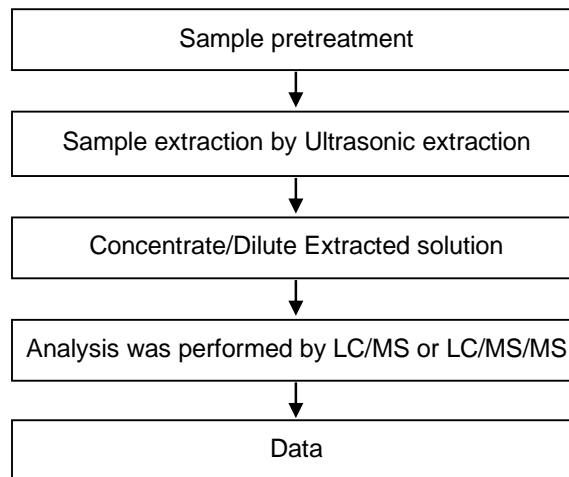


This document is issued by the Company subject to its General Conditions of Service printed overleaf, available on request or accessible at <https://www.sgs.com.tw/terms-of-service> and, for electronic format documents, subject to Terms and Conditions for Electronic Documents at <https://www.sgs.com.tw/terms-of-service>. Attention is drawn to the limitation of liability, indemnification and jurisdiction issues defined therein. Any holder of this document is advised that information contained hereon reflects the Company's findings at the time of its intervention only and within the limits of client's instruction, if any. The Company's sole responsibility is to its Client and this document does not exonerate parties to a transaction from exercising all their rights and obligations under the transaction documents. This document cannot be reproduced, except in full, without prior written approval of the Company. Any unauthorized alteration, forgery or falsification of the content or appearance of this document is unlawful and offenders may be prosecuted to the fullest extent of the law. Unless otherwise stated the results shown in this test report refer only to the sample(s) tested.

OHKUCHI MATERIALS CO., LTD.

1746-2 OHKUCHI-USHIO ISA-CITY KAGOSHIMA. 895-2501 JAPAN

Analytical flow chart - PFOA/PFOS



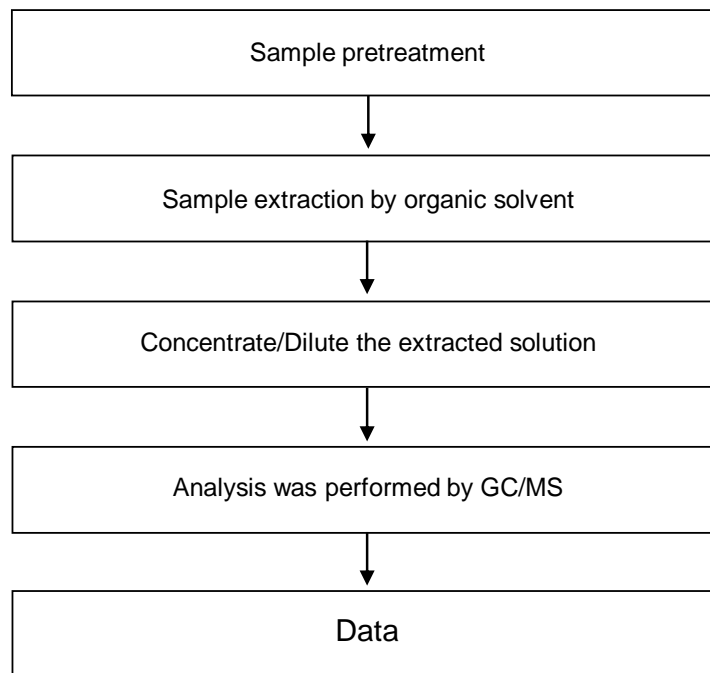
This document is issued by the Company subject to its General Conditions of Service printed overleaf, available on request or accessible at <https://www.sgs.com.tw/terms-of-service> and, for electronic format documents, subject to Terms and Conditions for Electronic Documents at <https://www.sgs.com.tw/terms-of-service>. Attention is drawn to the limitation of liability, indemnification and jurisdiction issues defined therein. Any holder of this document is advised that information contained hereon reflects the Company's findings at the time of its intervention only and within the limits of client's instruction, if any. The Company's sole responsibility is to its Client and this document does not exonerate parties to a transaction from exercising all their rights and obligations under the transaction documents. This document cannot be reproduced, except in full, without prior written approval of the Company. Any unauthorized alteration, forgery or falsification of the content or appearance of this document is unlawful and offenders may be prosecuted to the fullest extent of the law. Unless otherwise stated the results shown in this test report refer only to the sample(s) tested.

OHKUCHI MATERIALS CO., LTD.

1746-2 OHKUCHI-USHIO ISA-CITY KAGOSHIMA. 895-2501 JAPAN

Analytical flow chart

* Apply to: PCBs, PCNs, PCTs, Mirex, Chlorinated Paraffins, DBBT

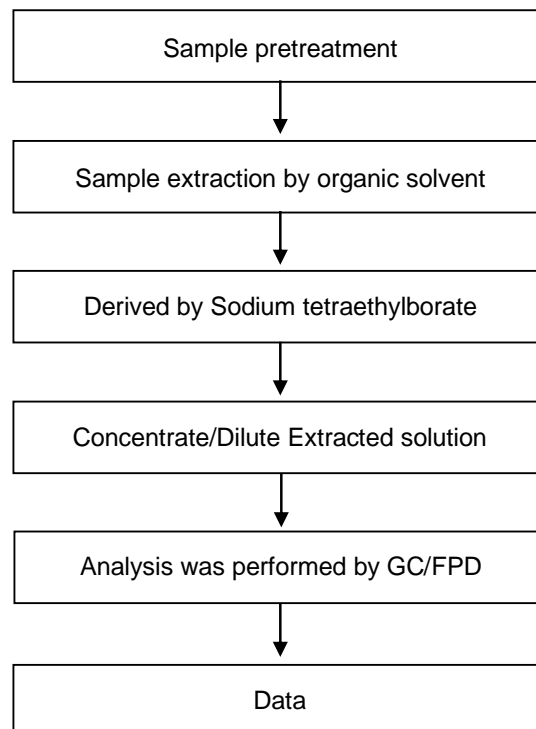


This document is issued by the Company subject to its General Conditions of Service printed overleaf, available on request or accessible at <https://www.sgs.com.tw/terms-of-service> and, for electronic format documents, subject to Terms and Conditions for Electronic Documents at <https://www.sgs.com.tw/terms-of-service>. Attention is drawn to the limitation of liability, indemnification and jurisdiction issues defined therein. Any holder of this document is advised that information contained hereon reflects the Company's findings at the time of its intervention only and within the limits of client's instruction, if any. The Company's sole responsibility is to its Client and this document does not exonerate parties to a transaction from exercising all their rights and obligations under the transaction documents. This document cannot be reproduced, except in full, without prior written approval of the Company. Any unauthorized alteration, forgery or falsification of the content or appearance of this document is unlawful and offenders may be prosecuted to the fullest extent of the law. Unless otherwise stated the results shown in this test report refer only to the sample(s) tested.

OHKUCHI MATERIALS CO., LTD.

1746-2 OHKUCHI-USHIO ISA-CITY KAGOSHIMA. 895-2501 JAPAN

Analytical flow chart - Organic-Tin

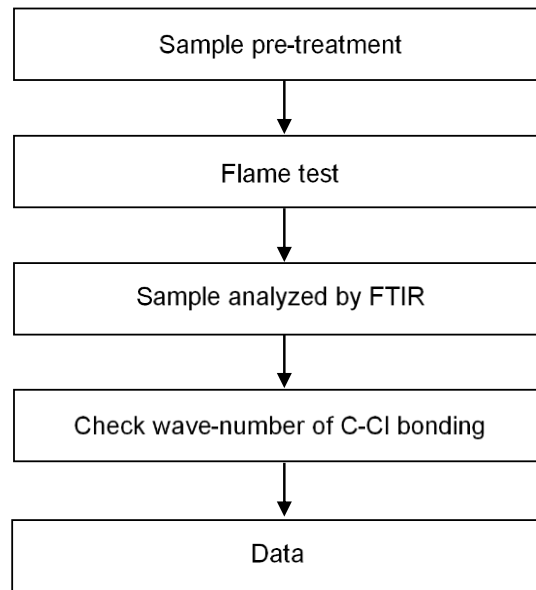


This document is issued by the Company subject to its General Conditions of Service printed overleaf, available on request or accessible at <https://www.sgs.com.tw/terms-of-service> and, for electronic format documents, subject to Terms and Conditions for Electronic Documents at <https://www.sgs.com.tw/terms-of-service>. Attention is drawn to the limitation of liability, indemnification and jurisdiction issues defined therein. Any holder of this document is advised that information contained hereon reflects the Company's findings at the time of its intervention only and within the limits of client's instruction, if any. The Company's sole responsibility is to its Client and this document does not exonerate parties to a transaction from exercising all their rights and obligations under the transaction documents. This document cannot be reproduced, except in full, without prior written approval of the Company. Any unauthorized alteration, forgery or falsification of the content or appearance of this document is unlawful and offenders may be prosecuted to the fullest extent of the law. Unless otherwise stated the results shown in this test report refer only to the sample(s) tested.

OHKUCHI MATERIALS CO., LTD.

1746-2 OHKUCHI-USHIO ISA-CITY KAGOSHIMA. 895-2501 JAPAN

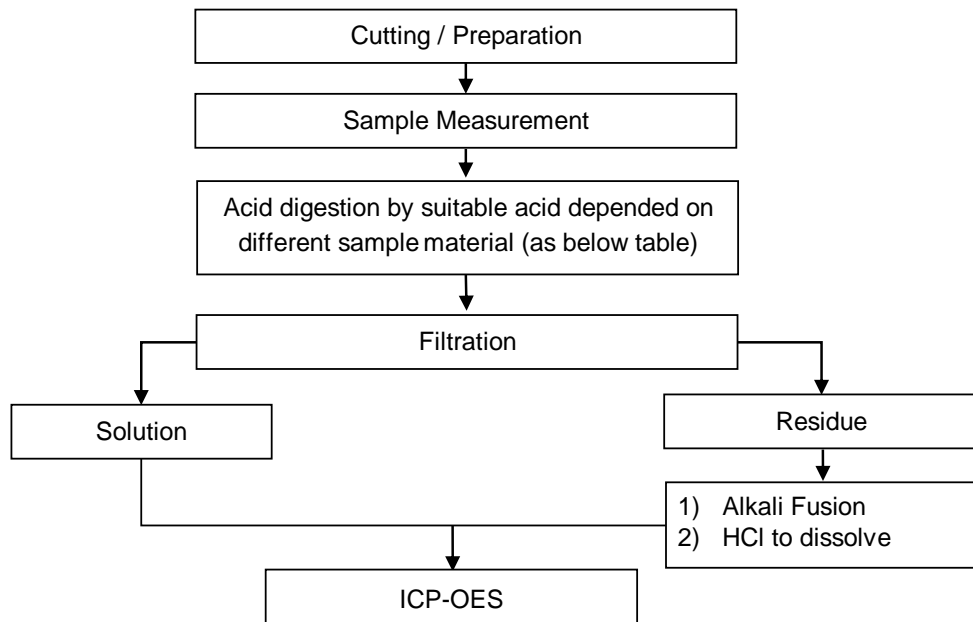
Analysis flow chart - PVC



This document is issued by the Company subject to its General Conditions of Service printed overleaf, available on request or accessible at <https://www.sgs.com.tw/terms-of-service> and, for electronic format documents, subject to Terms and Conditions for Electronic Documents at <https://www.sgs.com.tw/terms-of-service>. Attention is drawn to the limitation of liability, indemnification and jurisdiction issues defined therein. Any holder of this document is advised that information contained hereon reflects the Company's findings at the time of its intervention only and within the limits of client's instruction, if any. The Company's sole responsibility is to its Client and this document does not exonerate parties to a transaction from exercising all their rights and obligations under the transaction documents. This document cannot be reproduced, except in full, without prior written approval of the Company. Any unauthorized alteration, forgery or falsification of the content or appearance of this document is unlawful and offenders may be prosecuted to the fullest extent of the law. Unless otherwise stated the results shown in this test report refer only to the sample(s) tested.

Flow Chart of digestion for the elements analysis performed by ICP-OES

These samples were dissolved totally by pre-conditioning method according to below flow chart.



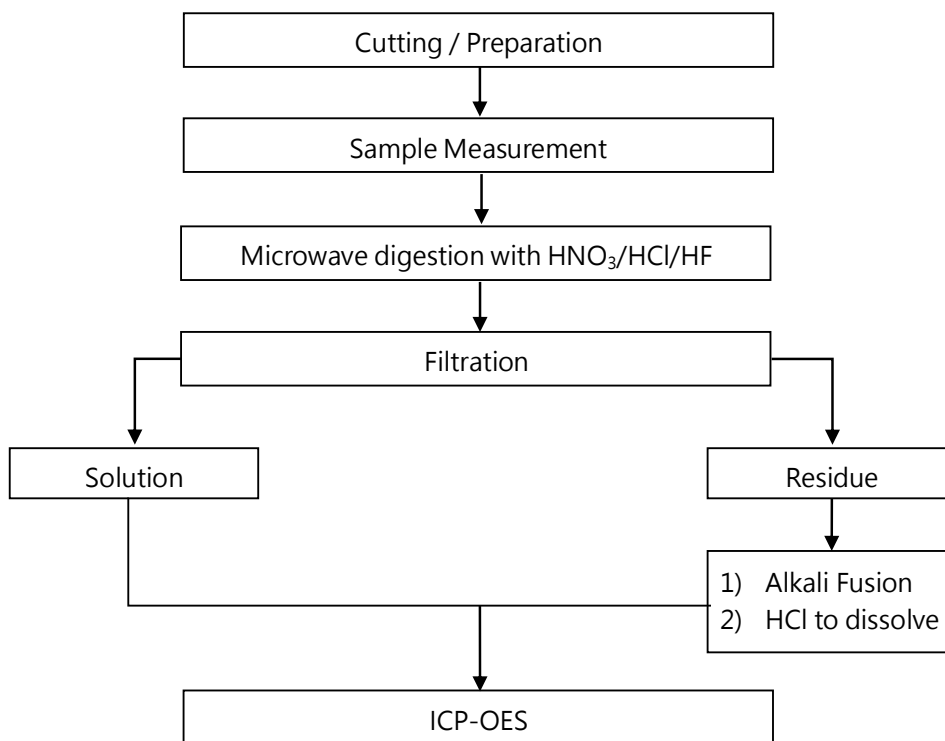
| | |
|------------------------------------|---|
| Steel, copper, aluminum, solder | Aqua regia, HNO ₃ , HCl, HF, H ₂ O ₂ |
| Glass | HNO ₃ /HF |
| Gold, platinum, palladium, ceramic | Aqua regia |
| Silver | HNO ₃ |
| Plastic | H ₂ SO ₄ , H ₂ O ₂ , HNO ₃ , HCl |
| Others | Added appropriate reagent to total digestion |

This document is issued by the Company subject to its General Conditions of Service printed overleaf, available on request or accessible at <https://www.sgs.com.tw/terms-of-service> and, for electronic format documents, subject to Terms and Conditions for Electronic Documents at <https://www.sgs.com.tw/terms-of-service>. Attention is drawn to the limitation of liability, indemnification and jurisdiction issues defined therein. Any holder of this document is advised that information contained hereon reflects the Company's findings at the time of its intervention only and within the limits of client's instruction, if any. The Company's sole responsibility is to its Client and this document does not exonerate parties to a transaction from exercising all their rights and obligations under the transaction documents. This document cannot be reproduced, except in full, without prior written approval of the Company. Any unauthorized alteration, forgery or falsification of the content or appearance of this document is unlawful and offenders may be prosecuted to the fullest extent of the law. Unless otherwise stated the results shown in this test report refer only to the sample(s) tested.

Analytical flow chart of Heavy Metal

These samples were dissolved totally by pre-conditioning method according to below flow chart.

【Reference method : US EPA 3051 · US EPA 3052】



* US EPA 3051 method does not add HF.

This document is issued by the Company subject to its General Conditions of Service printed overleaf, available on request or accessible at <https://www.sgs.com.tw/terms-of-service> and, for electronic format documents, subject to Terms and Conditions for Electronic Documents at <https://www.sgs.com.tw/terms-of-service>. Attention is drawn to the limitation of liability, indemnification and jurisdiction issues defined therein. Any holder of this document is advised that information contained hereon reflects the Company's findings at the time of its intervention only and within the limits of client's instruction, if any. The Company's sole responsibility is to its Client and this document does not exonerate parties to a transaction from exercising all their rights and obligations under the transaction documents. This document cannot be reproduced, except in full, without prior written approval of the Company. Any unauthorized alteration, forgery or falsification of the content or appearance of this document is unlawful and offenders may be prosecuted to the fullest extent of the law. Unless otherwise stated the results shown in this test report refer only to the sample(s) tested.

OHKUCHI MATERIALS CO., LTD.

1746-2 OHKUCHI-USHIO ISA-CITY KAGOSHIMA. 895-2501 JAPAN

* The tested sample / part is marked by an arrow if it's shown on the photo. *

ETR20C05200



** End of Report **

This document is issued by the Company subject to its General Conditions of Service printed overleaf, available on request or accessible at <https://www.sgs.com.tw/terms-of-service> and, for electronic format documents, subject to Terms and Conditions for Electronic Documents at <https://www.sgs.com.tw/terms-of-service>. Attention is drawn to the limitation of liability, indemnification and jurisdiction issues defined therein. Any holder of this document is advised that information contained hereon reflects the Company's findings at the time of its intervention only and within the limits of client's instruction, if any. The Company's sole responsibility is to its Client and this document does not exonerate parties to a transaction from exercising all their rights and obligations under the transaction documents. This document cannot be reproduced, except in full, without prior written approval of the Company. Any unauthorized alteration, forgery or falsification of the content or appearance of this document is unlawful and offenders may be prosecuted to the fullest extent of the law. Unless otherwise stated the results shown in this test report refer only to the sample(s) tested.