

BACnet demonstrator using SK S7G2

1. Download and install the BACeye network explorer from MBS onto a PC
<http://www.baceye.com/kostenlos-testen>
2. Download the BACnet application software on the SK S7G2
3. Assemble the interface board and connect to the SK S7G2 as shown in the schematic BACnet Interface Board. (Page 2).
4. Connect the SK S7G2, PC and Interface board as shown in Fig. 1.

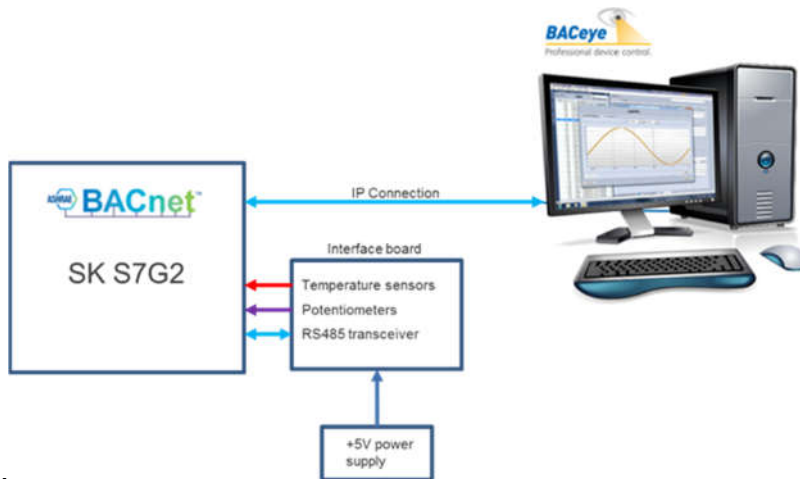
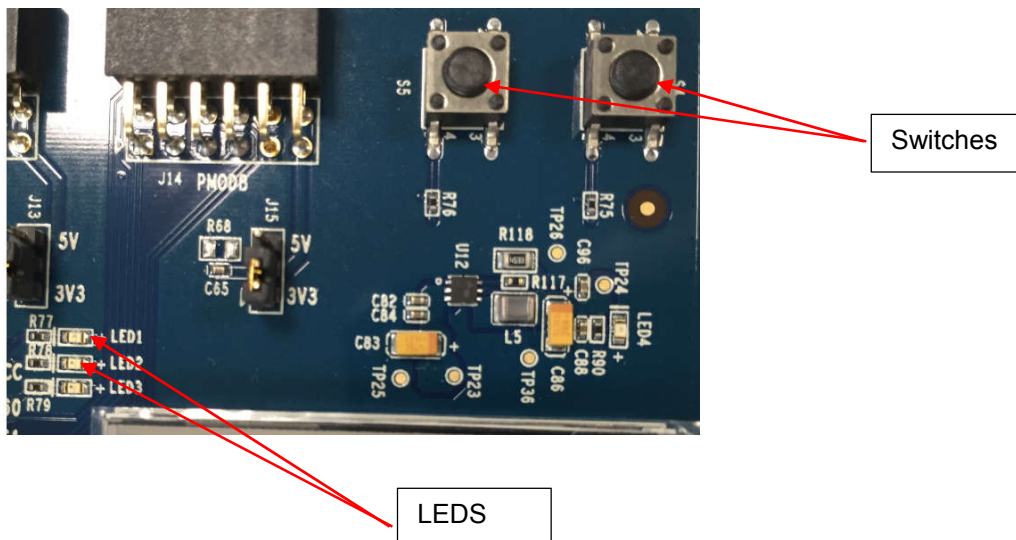


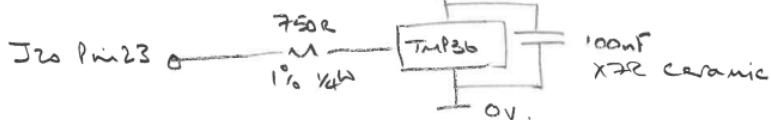
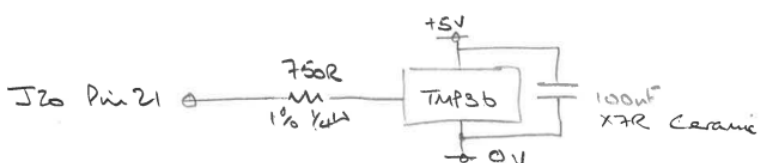
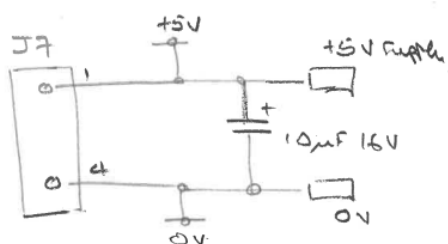
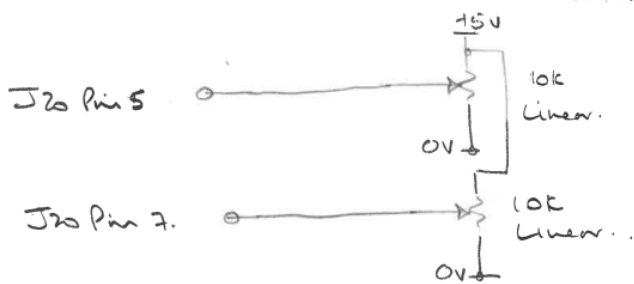
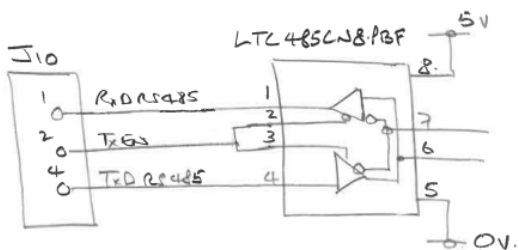
Fig. 1.

5. Follow instruction on running BACeye on Page 3.
6. Switches 1 and 2 and LEDS 1 and 2 are o the SK S7G2

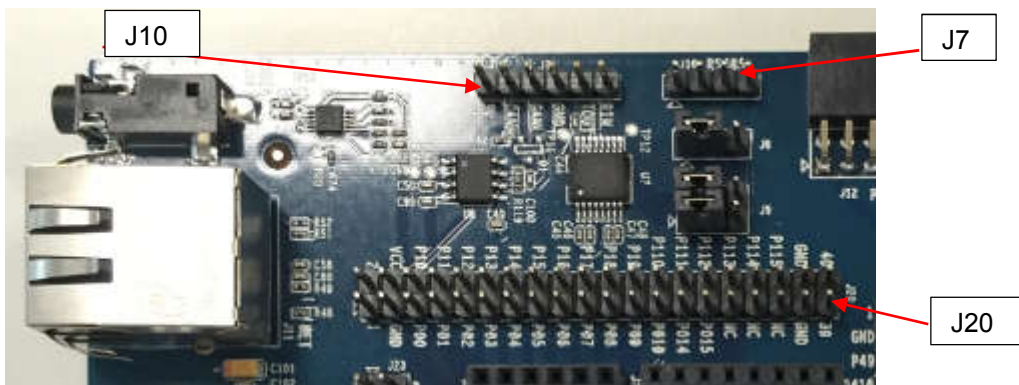


BACnet Interfacing Board

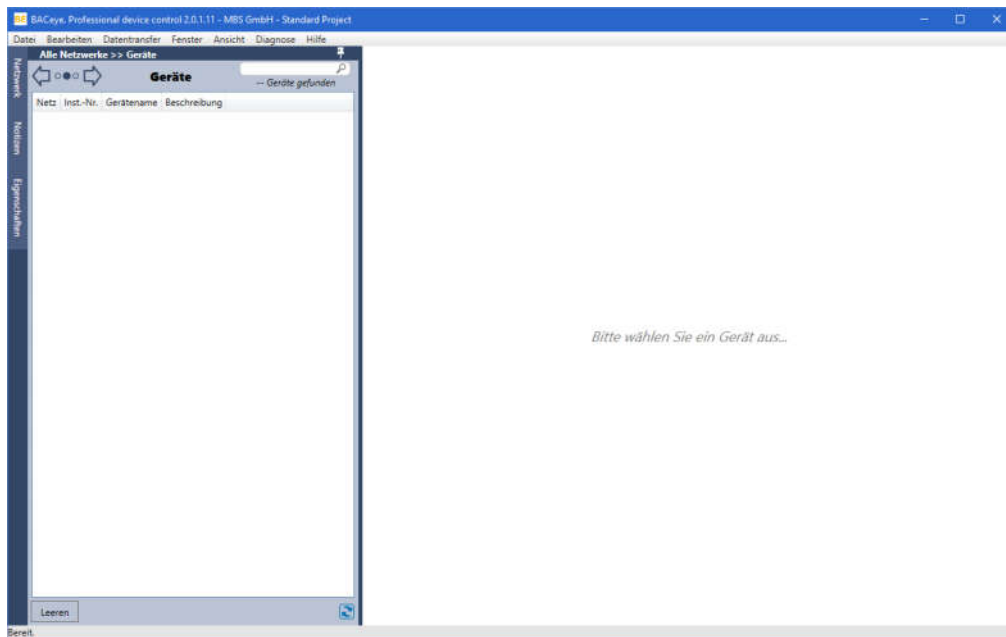
* J7, J10 & J20 are on SK 5762



TMP36GT92

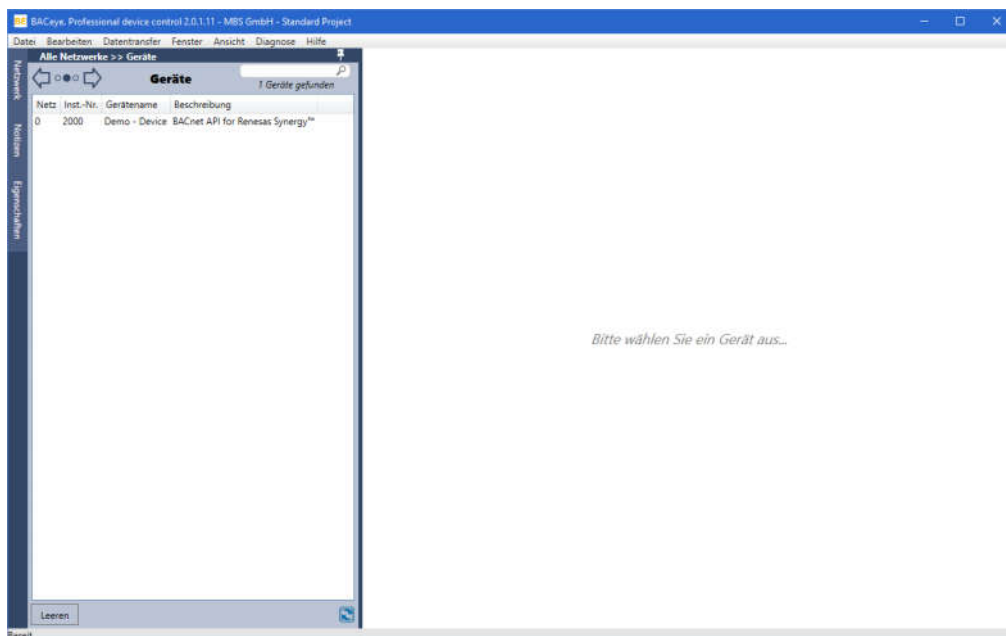


Start BACeye.



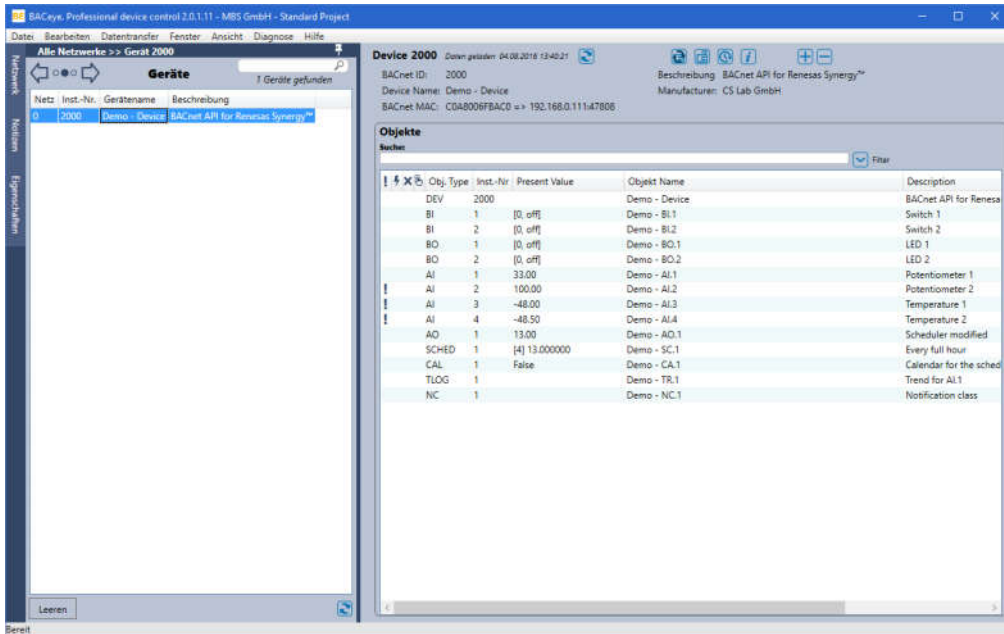
Reload Devices

Reload devices with a click on the recycle button. If the device 2000 is not found, check the network settings. The demo has an IP address of 192.168.0.111.



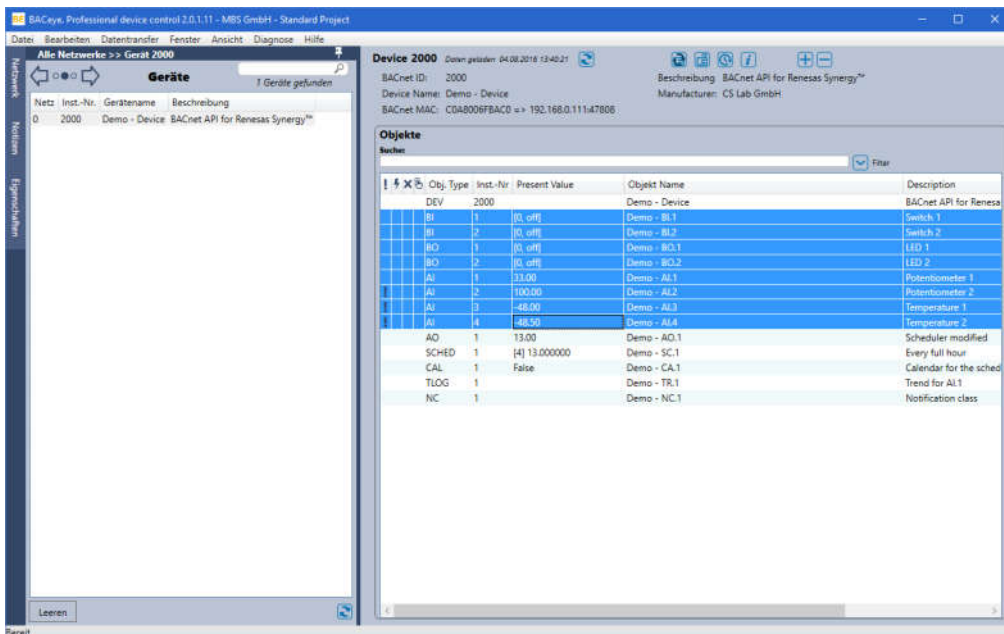
Select Device 2000

Select the device 2000 with a left button click. On the right side, all objects of the device are shown.



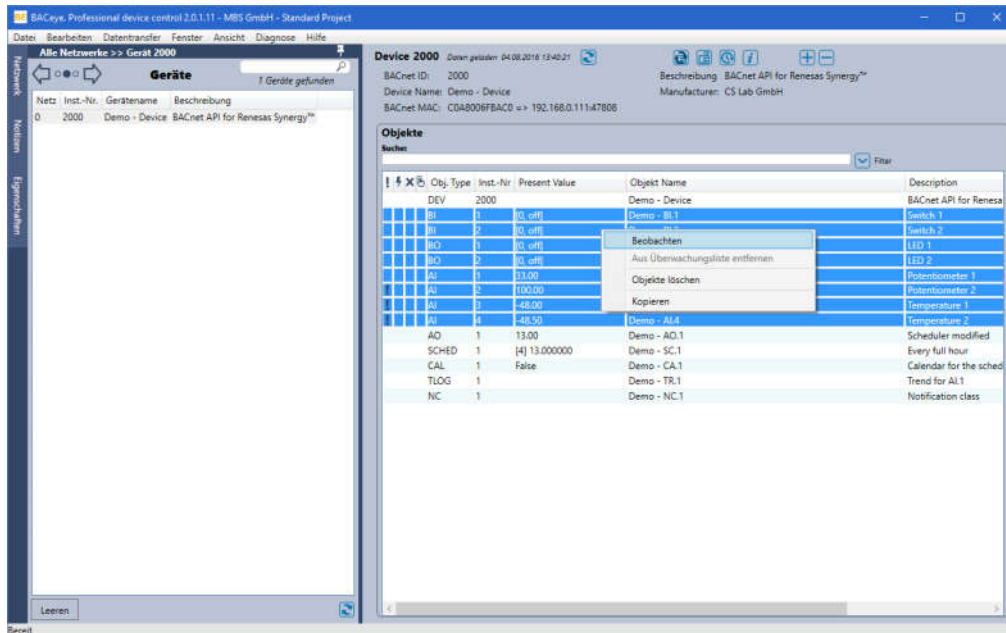
Select Objects

Select the binary and analog objects with the mouse. You will need only the input object, but it is easier to select input and output objects.



Watch Objects

With the context menu (right mouse button), activate watching. With this option, the changing values are displayed in real time.



Close Watch Window

Close the watch window, it's easier to watch the changing values in the main window of BACeye.

