

case studies



clients & partners

We partner with leading vendors to ensure successful project outcomes. Our customers, from start-ups through to established international brand name corporations, come from a diverse range of vertical markets.



head office

Suite 28/296 Bay Road
Cheltenham, VIC, 3192
Australia

postal address

PO Box 222
Sandringham, VIC, 3191
Australia

telephone

+61 3 9095 8088



print anything from anywhere



High quality business printer products with connectivity components from Clarinox.

This Fortune 500 printer corporation client of Clarinox always ensures that their technology is leading the pack.

When they commenced their search for Bluetooth Low Energy (BLE) on an ARM Cortex processor with Broadcom wireless chipset they scanned the worldwide market and determined that Clarinox was the most suitable supplier for their needs.

Clarinox worked together with the client, first on a proof of concept, and then onto full production products. Throughout this process it was required to meet a series of standards and work through a detailed and thorough testing regime. This was to ensure the application, stack, and system provided robust and secure wireless connectivity for the client's leading business printing product.

Outcome for Client

The units passed testing successfully and the project has moved successfully to manufacturing and shipping.

"The product development has been a success. Clarinox is such a great partner and we thank you so much for all your support"

next generation IVI



Together, GHS & Clarinox ensured the construction of a robust multimedia streaming architecture.

Daimler AG has been at the leading edge since the inception of the automotive technology and remains the market leader in research and innovation.

Together, GHS and Clarinox met the exacting standards for a robust real time operating system (RTOS) and wireless connectivity platform, combined with extensive experience in wireless product development.

Outcome for Client

The functional prototype has been successfully demonstrated.

"The prototype enabled us to test out new technologies in a manner that otherwise would not have been possible. The combined offering of Clarinox connectivity on the Green Hills INTEGRITY RTOS provided a robust, safe and flexible foundation upon which many innovative telematics features could be tested."

Daimler AG, known for unsurpassed quality, chose the combination of GHS and Clarinox software for their predevelopment project needs.

fishing for a smarter solution

When Navico needed a smarter connectivity solution they chose ClarinoxBlue dual mode Bluetooth protocol stack.

Navico is proud to be the world's largest developer, manufacturer and distributor of marine electronics for the recreational market. This resulted in a demand for quality from all suppliers. When seeking new technology for Navico's connectivity requirements, Navico chose the ClarinoxBlue solution as the winning provider for Bluetooth® functionality due to the Clarinox innovative approach, simple APIs and enhanced in-built debug capabilities.

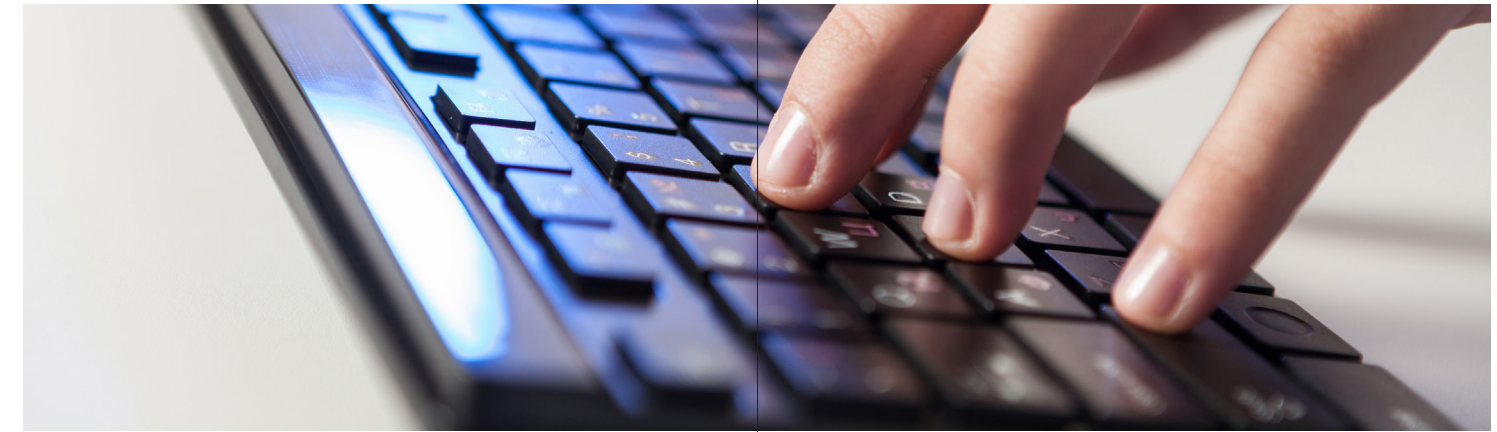
The Clarinox experience in wireless product development, combined with the Clarinox portfolio of robust wireless protocols and software tools, placed us in a unique position to ensure the success of this innovative product. The extensive experience Clarinox has had with Freescale iMX6, and the ability to support both Linux and a variety of Bluetooth chipsets made the decision even easier.

Outcome for Client

"As the market leader, Navico works hard to stay ahead of the pack. Improvements and upgrades are carefully considered and planned. I am very pleased to say that working with Clarinox made the job of integrating Bluetooth technology quick and relatively painless. This was a great result for Navico."



exploring new products



Why Logitech chose Clarinox as their preferred wireless supplier when exploring new markets.

When Logitech started exploring new market segments, they began a search for the best wireless supplier to support and fully deliver to their challenging requirements.

The specifications were clear from the onset. The Logitech product was to incorporate a custom CPU and TI WiLink8 chipset for simultaneous Wi-Fi and Bluetooth. Development was to take place with uC/OS-III RTOS using the custom SDK, and with the ADS 1.2 toolchain.

Clarinox worked with Logitech to bring the ClarinoxBlue and ClarinoxWiFi solutions to the Logitech product. Both Clarinox products are encapsulated within ClarinoxSoftframe, an award-winning C/C++ based framework, which allowed these technologies to be used concurrently.

Outcome for Client

With the dedicated team of software engineers, Clarinox ensured the delivery to the Logitech specifications. As Logitech's Head of Technology – Seed's Initiatives, Aron Rosenberg, puts it: "I was pleased with the porting work, the communication and the relationship – and would be very happy to work with Clarinox again."

helping with hearing loss



ClarinoxBlue Bluetooth Classic and BLE on NXP MCU with a Broadcom wireless chipset for CaptionCall.

CaptionCall is the world's best captioning telephone designed to help people with hearing loss use the phone to stay socially connected with loved ones and so helping to reduce the impact of hearing loss on people's lives.

The ClarinoxBlue stack fitted the technical requirement for a large range of profiles and the same API across multiple target platforms. The target platforms included NXP / Rockchip MCU and Ampak / Broadcom wireless chip and Linux / Android operating environments.

Clarinox has proven support for the target platforms, combined with the Clarinox portfolio of wireless protocols, and software tools placed Clarinox in a perfect position to meet the demands of such project.

Outcome for Client

Clarinox is proud to have assisted in lessening the effect of hearing loss on the hearing impaired. This is a fine example of Clarinox providing the technology to support innovation in the health and medical industry.

satellite connectivity

Simultaneous ClarinoxBlue and ClarinoxWiFi on TI OMAP / GHS INTEGRITY for NovAtel® GNSS products.

NovAtel® products are built to the highest standard to ensure robust, reliable products that can be integrated rapidly into customer applications.

NovAtel® sets this high quality expectation for all component vendors. So when NovAtel sought a supplier for the Bluetooth and Wi-Fi functionality of its ProPak6 receiver, robustness and reliability were key priorities. ClarinoxBlue and ClarinoxWiFi running on INTEGRITY passed this test and were chosen as the winning combination. The OMAP 3 general processor and LSR TiW-R2 module (based upon TI WiLink chipset) completed the major components of the target platform.

The Clarinox stacks - ClarinoxBlue and ClarinoxWifi, and Clarinox debugging and protocol analyzer were used to provide Bluetooth and Wi-Fi connectivity to the ProPak6 product.

Outcome for Client

The Clarinox team worked with NovAtel to provide valuable support throughout crucial phases of the project. The product was released on time and has been exceptionally well received in the marketplace.

