

To our customers,

---

## Old Company Name in Catalogs and Other Documents

---

On April 1<sup>st</sup>, 2010, NEC Electronics Corporation merged with Renesas Technology Corporation, and Renesas Electronics Corporation took over all the business of both companies. Therefore, although the old company name remains in this document, it is a valid Renesas Electronics document. We appreciate your understanding.

Renesas Electronics website: <http://www.renesas.com>

April 1<sup>st</sup>, 2010  
Renesas Electronics Corporation

Issued by: Renesas Electronics Corporation (<http://www.renesas.com>)

Send any inquiries to <http://www.renesas.com/inquiry>.

## Notice

1. All information included in this document is current as of the date this document is issued. Such information, however, is subject to change without any prior notice. Before purchasing or using any Renesas Electronics products listed herein, please confirm the latest product information with a Renesas Electronics sales office. Also, please pay regular and careful attention to additional and different information to be disclosed by Renesas Electronics such as that disclosed through our website.
2. Renesas Electronics does not assume any liability for infringement of patents, copyrights, or other intellectual property rights of third parties by or arising from the use of Renesas Electronics products or technical information described in this document. No license, express, implied or otherwise, is granted hereby under any patents, copyrights or other intellectual property rights of Renesas Electronics or others.
3. You should not alter, modify, copy, or otherwise misappropriate any Renesas Electronics product, whether in whole or in part.
4. Descriptions of circuits, software and other related information in this document are provided only to illustrate the operation of semiconductor products and application examples. You are fully responsible for the incorporation of these circuits, software, and information in the design of your equipment. Renesas Electronics assumes no responsibility for any losses incurred by you or third parties arising from the use of these circuits, software, or information.
5. When exporting the products or technology described in this document, you should comply with the applicable export control laws and regulations and follow the procedures required by such laws and regulations. You should not use Renesas Electronics products or the technology described in this document for any purpose relating to military applications or use by the military, including but not limited to the development of weapons of mass destruction. Renesas Electronics products and technology may not be used for or incorporated into any products or systems whose manufacture, use, or sale is prohibited under any applicable domestic or foreign laws or regulations.
6. Renesas Electronics has used reasonable care in preparing the information included in this document, but Renesas Electronics does not warrant that such information is error free. Renesas Electronics assumes no liability whatsoever for any damages incurred by you resulting from errors in or omissions from the information included herein.
7. Renesas Electronics products are classified according to the following three quality grades: “Standard”, “High Quality”, and “Specific”. The recommended applications for each Renesas Electronics product depends on the product’s quality grade, as indicated below. You must check the quality grade of each Renesas Electronics product before using it in a particular application. You may not use any Renesas Electronics product for any application categorized as “Specific” without the prior written consent of Renesas Electronics. Further, you may not use any Renesas Electronics product for any application for which it is not intended without the prior written consent of Renesas Electronics. Renesas Electronics shall not be in any way liable for any damages or losses incurred by you or third parties arising from the use of any Renesas Electronics product for an application categorized as “Specific” or for which the product is not intended where you have failed to obtain the prior written consent of Renesas Electronics. The quality grade of each Renesas Electronics product is “Standard” unless otherwise expressly specified in a Renesas Electronics data sheets or data books, etc.
  - “Standard”: Computers; office equipment; communications equipment; test and measurement equipment; audio and visual equipment; home electronic appliances; machine tools; personal electronic equipment; and industrial robots.
  - “High Quality”: Transportation equipment (automobiles, trains, ships, etc.); traffic control systems; anti-disaster systems; anti-crime systems; safety equipment; and medical equipment not specifically designed for life support.
  - “Specific”: Aircraft; aerospace equipment; submersible repeaters; nuclear reactor control systems; medical equipment or systems for life support (e.g. artificial life support devices or systems), surgical implantations, or healthcare intervention (e.g. excision, etc.), and any other applications or purposes that pose a direct threat to human life.
8. You should use the Renesas Electronics products described in this document within the range specified by Renesas Electronics, especially with respect to the maximum rating, operating supply voltage range, movement power voltage range, heat radiation characteristics, installation and other product characteristics. Renesas Electronics shall have no liability for malfunctions or damages arising out of the use of Renesas Electronics products beyond such specified ranges.
9. Although Renesas Electronics endeavors to improve the quality and reliability of its products, semiconductor products have specific characteristics such as the occurrence of failure at a certain rate and malfunctions under certain use conditions. Further, Renesas Electronics products are not subject to radiation resistance design. Please be sure to implement safety measures to guard them against the possibility of physical injury, and injury or damage caused by fire in the event of the failure of a Renesas Electronics product, such as safety design for hardware and software including but not limited to redundancy, fire control and malfunction prevention, appropriate treatment for aging degradation or any other appropriate measures. Because the evaluation of microcomputer software alone is very difficult, please evaluate the safety of the final products or system manufactured by you.
10. Please contact a Renesas Electronics sales office for details as to environmental matters such as the environmental compatibility of each Renesas Electronics product. Please use Renesas Electronics products in compliance with all applicable laws and regulations that regulate the inclusion or use of controlled substances, including without limitation, the EU RoHS Directive. Renesas Electronics assumes no liability for damages or losses occurring as a result of your noncompliance with applicable laws and regulations.
11. This document may not be reproduced or duplicated, in any form, in whole or in part, without prior written consent of Renesas Electronics.
12. Please contact a Renesas Electronics sales office if you have any questions regarding the information contained in this document or Renesas Electronics products, or if you have any other inquiries.

(Note 1) “Renesas Electronics” as used in this document means Renesas Electronics Corporation and also includes its majority-owned subsidiaries.

(Note 2) “Renesas Electronics product(s)” means any product developed or manufactured by or for Renesas Electronics.

I<sup>2</sup>C-BUS COMPATIBLE 8BIT 12CHANNEL D/A CONVERTER

## DESCRIPTION

The  $\mu$ PD6222 is an 8-bit monolithic CMOS digital-to-analog converter using the R-2R technique. The  $\mu$ PD6222 incorporates a 12-channel digital-to-analog converters and I<sup>2</sup>C-bus compatible interface. The designer needs only 2 signals (Serial Data and Serial Clock) to interface and can use 8-ICs (96-channels) on same bus to control chip-select terminals.

The  $\mu$ PD6222 incorporates Output CMOS Buffer to achieve wide output voltage range and two reference voltage terminals.

The  $\mu$ PD6222 is ideal for automatic control for color-television.

## FEATURES

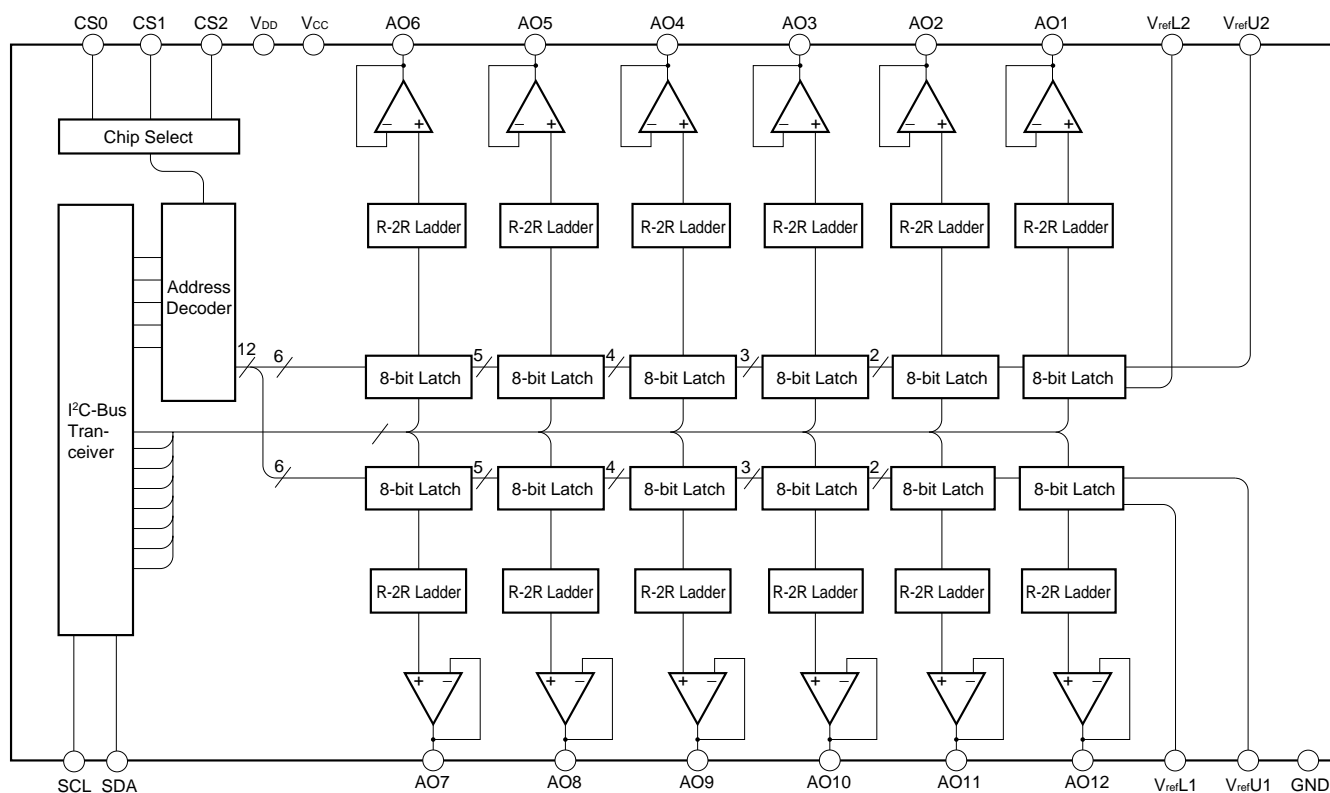
- 12-channel 8-bit digital-to-analog converter using the R-2R ladder technique
- I<sup>2</sup>C-bus compatible serial interface (Serial Data and Serial Clock)
- 8-ICs (96-channels) can be connected by chip-select terminals
- Output CMOS Buffer to achieve wide output voltage range
- Two reference voltage

## ORDERING INFORMATION

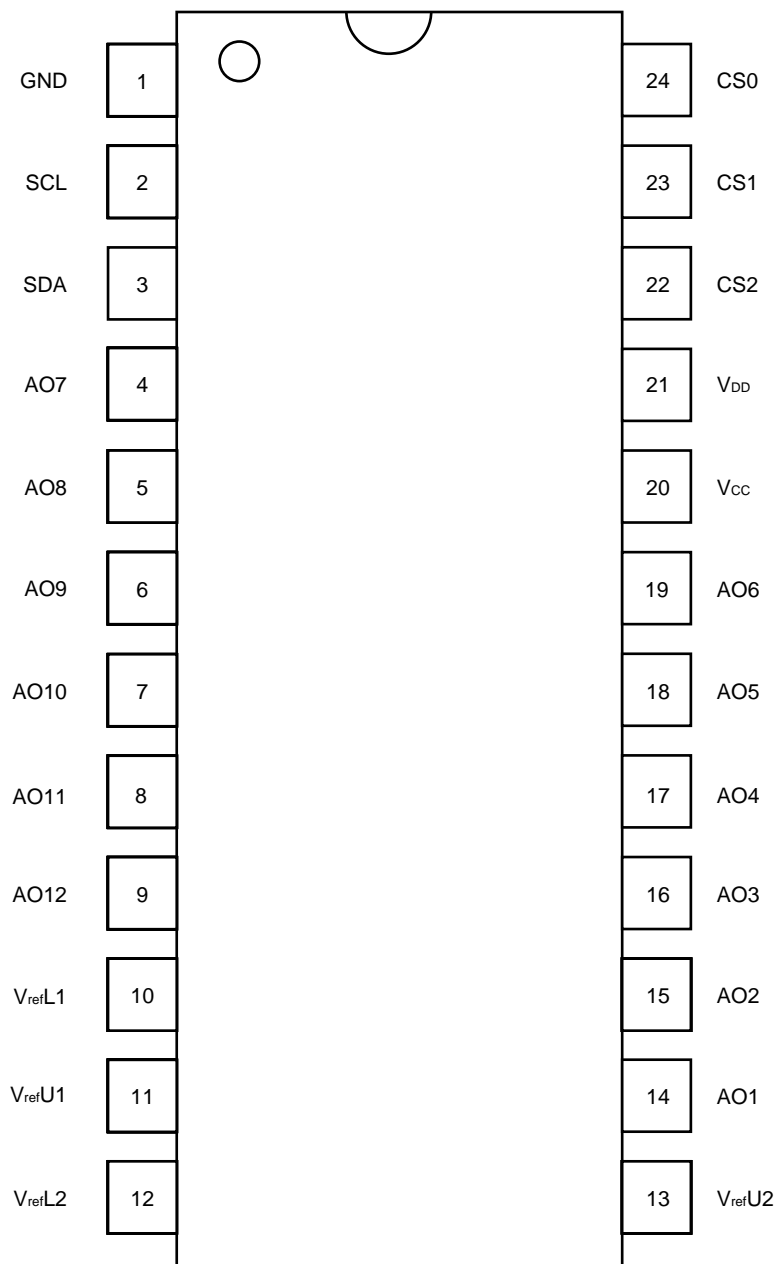
PART NO.	PACKAGE
$\mu$ PD6222CS	24-pin plastic shrink DIP (300 mil)
$\mu$ PD6222GS	24-pin plastic SOP (300 mil)

**Caution** Purchase of NEC I<sup>2</sup>C components conveys a license under the Philips I<sup>2</sup>C patent Right to use these components in an I<sup>2</sup>C system, provided that the system conforms to the I<sup>2</sup>C Standard Specification as defined by Philips.

BLOCK DIAGRAM



PIN CONNECTION DIAGRAM (Top View)



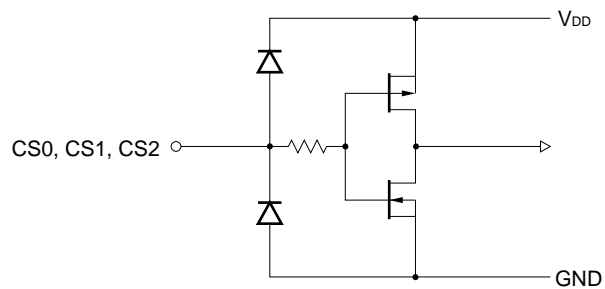
## PIN CONFIGURATION

PIN NO.	SYMBOL	FUNCTION
1	GND	Ground
2	SCL	Serial Clock Input
3	SDA	Serial Data Input (Output: acknowledgement signal)
4	AO7	Analog Output Channel 7
5	AO8	Analog Output Channel 8
6	AO9	Analog Output Channel 9
7	AO10	Analog Output Channel 10
8	AO11	Analog Output Channel 11
9	AO12	Analog Output Channel 12
10	V <sub>refL1</sub>	GND Side Reference Voltage Input 1 (The current of I <sub>refL1</sub> flows out from IC.)
11	V <sub>refU1</sub>	V <sub>CC</sub> Side Reference Voltage Input 1 (The current of I <sub>refU1</sub> flows into IC.)
12	V <sub>refL2</sub>	GND Side Reference Voltage Input 2 (The current of I <sub>refL2</sub> flows out from IC.)
13	V <sub>refU2</sub>	V <sub>CC</sub> Side Reference Voltage Input 2 (The current of I <sub>refU2</sub> flows into IC.)
14	AO1	Analog Output Channel 1
15	AO2	Analog Output Channel 2
16	AO3	Analog Output Channel 3
17	AO4	Analog Output Channel 4
18	AO5	Analog Output Channel 5
19	AO6	Analog Output Channel 6
20	V <sub>CC</sub>	Analog Power Supply
21	V <sub>DD</sub>	Digital Power Supply
22	CS2	Chip Select 2
23	CS1	Chip Select 1
24	CS0	Chip Select 0

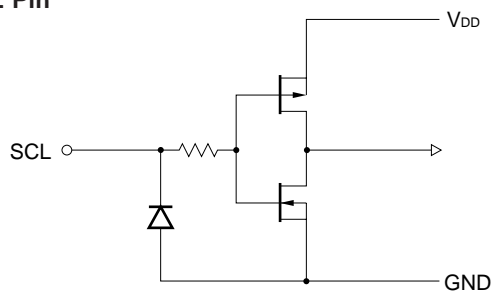
**Note** For “Power On Reset” function, when this IC is powered on, Analog Output Data (D0, D1 ... D7) will be set all 0. And the all Analog Output will be Zero Scale (1LSB + V<sub>refL</sub>).

## EQUIVALENT CIRCUIT OF PIN

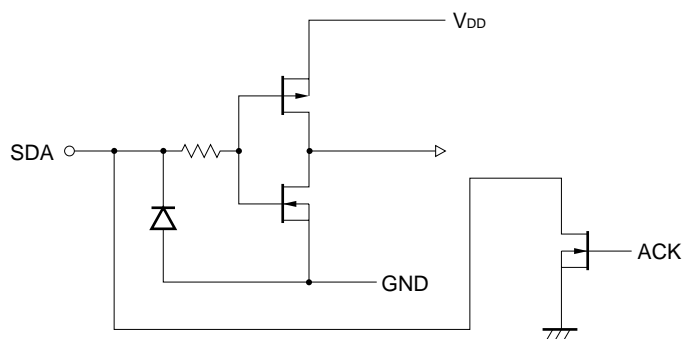
- Equivalent Circuit of CS0, CS1, CS2 Pins



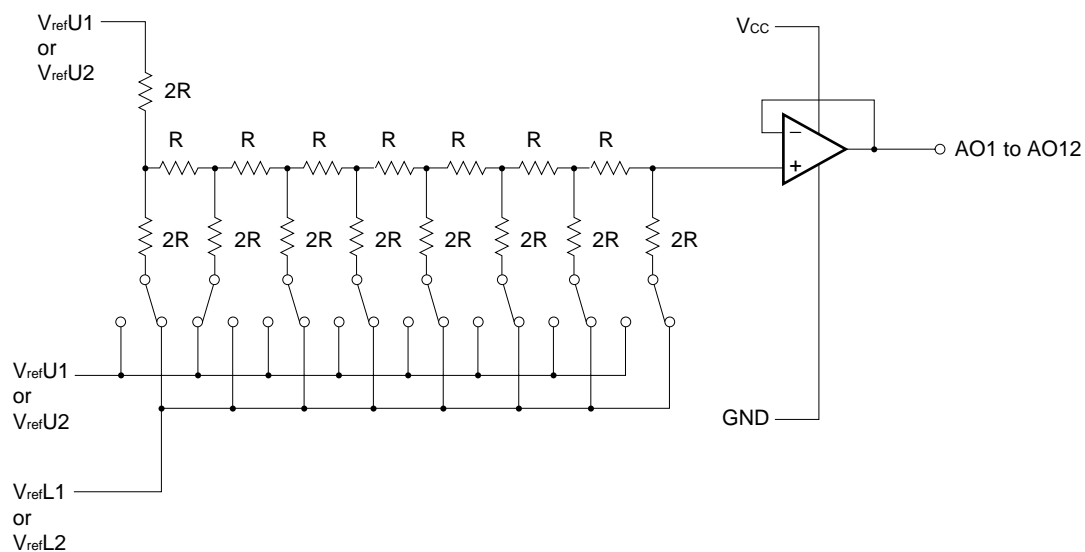
- Equivalent Circuit of SCL Pin



- Equivalent Circuit of SDA Pin



- Equivalent Circuit of  $V_{refU1}$ ,  $V_{refU2}$ ,  $V_{refL1}$ ,  $V_{refL2}$  and AO1 to 12 Pins





## ABSOLUTE MAXIMUM RATINGS

PARAMETER		SYMBOL	LIMITS	UNIT
Digital Supply Voltage		$V_{DD}$	-0.3 to +7.0	V
Analog Supply Voltage		$V_{CC}$	-0.3 to $V_{DD} + 0.3$	V
$V_{CC}$ Side Reference Voltage		$V_{refU1, U2}$	-0.3 to $V_{CC} + 0.3$	V
GND Side Reference Voltage		$V_{refL1, L2}$	-0.3 to $V_{CC} + 0.3$	V
Digital Input Voltage		$V_{IN}$	-0.3 to $V_{DD} + 0.3$	V
Output Voltage		$V_{OUT}$	-0.3 to $V_{CC} + 0.3$	V
Power Dissipation	CS Package	$P_D$	500	mW
	GS Package		200	mW
Operating Temperature Range		$T_A$	-20 to +85	°C
Storage Temperature Range		$T_{stg}$	-55 to +125	°C

## RECOMMENDED OPERATION CONDITIONS

PARAMETER	SYMBOL	CONDITION	MIN.	TYP.	MAX.	UNIT
Digital Supply Voltage	$V_{DD}$	$V_{DD} = V_{CC}$	4.5	5.0	5.5	V
Analog Supply Voltage	$V_{CC}$					
Input Voltage of $V_{CC}$ Side Reference Voltage Range	$V_{refU1, U2}$	This parameter is not same as D/A output voltage. D/A output is defined by the ability of Output Buffer Amp.	$V_{refL}$		$V_{CC}$	V
Input Voltage of GND Side Reference Voltage Range	$V_{refL1, L2}$		GND		$V_{refU}$	V
Output Capacitance Load	$C_O$				0.1	$\mu$ F

## ELECTRICAL CHARACTERISTICS

## DIGITAL BLOCK

( $V_{CC}$ ,  $V_{DD}$ ,  $V_{refU1, 2} = +4.5$  to  $+5.5$  V,  $V_{refU1, 2} \leq V_{CC}$ ,  $V_{refL1, 2} = GND = 0$  V,  $T_A = -20$  to  $+85$  °C)

PARAMETER	SYMBOL	CONDITION	MIN.	TYP.	MAX.	UNIT
Digital Supply Current	$I_{DD}$	CLK = 1 MHz, $I_{AO} = 0$ $\mu$ A			1.0	mA
Input Leak Current	$I_{I LEAK}$	$V_{IN} = 0$ to $V_{DD}$	-10		10	$\mu$ A
Low-Level Input Voltage	$V_{IL}$				0.2 $V_{DD}$	V
High-Level Input Voltage	$V_{IH}$		0.8 $V_{DD}$			V

**ANALOG BLOCK**

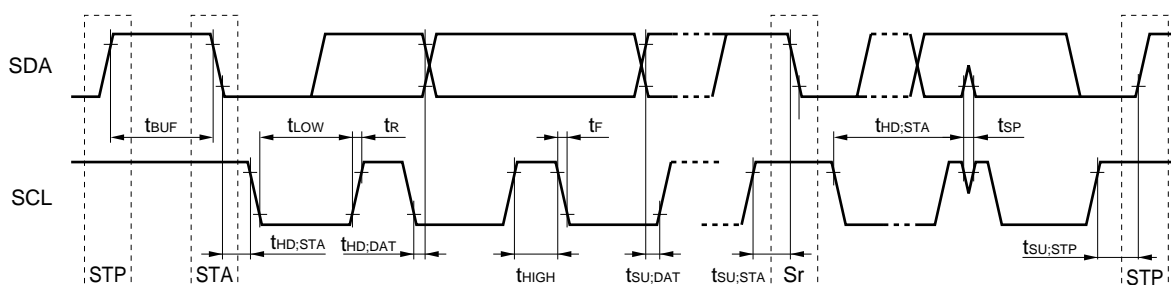
( $V_{CC}$ ,  $V_{DD}$ ,  $V_{refU1, 2} = +4.5$  to  $+5.5$  V,  $V_{refU1, 2} \leq V_{CC}$ ,  $V_{refL1, 2} = GND = 0$  V,  $T_A = -20$  to  $+85$  °C)

PARAMETER	SYMBOL	CONDITION	MIN.	TYP.	MAX.	UNIT
Analog Supply Current	$I_{CC}$	CLK = 1 MHz, $I_{AO} = 0$ μA		1.0	4.8	mA
Input Current of $V_{CC}$ Side Reference Voltage	$I_{refU}$	$V_{refU} = 5$ V, $V_{refL} = 0$ V, Data: Maximum Current		1.2	3.0	mA
Output Voltage Range of Output Buffer Amp.	$V_{AO}$	$I_{AO} = \pm 100$ μA	0.1		$V_{CC} - 0.1$	V
		$I_{AO} = \pm 500$ μA	0.2		$V_{CC} - 0.2$	
Output Current of Output Buffer Amp.	$I_{AO}$	$V_{AO} = 4.7$ V			-1.0	mA
		$V_{AO} = 0.2$ V	+1.0			
Differential Nonlinearity	$N_{DL}$	$V_{refU} = 4.79$ V $V_{refL} = 0.95$ V $V_{CC} = 5.5$ V (15 mV/LSB) No Load ( $I_{AO} = 0$ A)			±0.8	LSB
Nonlinearity	$N_L$				±0.8	LSB
Zero Scale Error	$N_Z$				±1.2	LSB
Full Scale Error	$N_F$				±1.2	LSB
Error between each Channel	$N_{ch}$				±1.2	LSB
Output Impedance of Output Buffer Amp.	$R_o$			5.0		Ω

I<sup>2</sup>C-BUS TRANSFER STANDARD

PARAMETER	SYMBOL	MIN.	MAX.	UNIT
SCL clock frequency	$f_{SCL}$	0	100	kHz
Time the bus must be free before a new transmission can start	$t_{BUF}$	4.7	—	$\mu$ s
Hold time START condition. After this period, the first clock pulse is generated	$t_{HD;STA}$	4.0	—	$\mu$ s
LOW period of the clock	$t_{LOW}$	4.7	—	$\mu$ s
HIGH period of the clock	$t_{HIGH}$	4.0	—	$\mu$ s
Set-up time for START condition (Only relevant for a repeated START condition)	$t_{SU;STA}$	4.7	—	$\mu$ s
Hold time DATA for I <sup>2</sup> C ICs	$t_{HD;DAT}$	0 <sup>Note</sup>	—	ns
Set-up time DATA	$t_{SU;DAT}$	250	—	ns
Rise time of both SDA and SCL lines	$t_r$	—	1	$\mu$ s
Fall time of both SDA and SCL lines	$t_f$	—	300	ns
Set-up time for STOP condition	$t_{SU;STP}$	4.0	—	$\mu$ s

**Note** Note that a transmitter must internally provide at least a hold time to bridge the undefined region (max. 300 ns) of the falling edge of SCL.

Timing requirements for the I<sup>2</sup>C-bus

## I<sup>2</sup>C-BUS FORMAT

STA	SLAVE ADDRESS DATA	W	ACK	SUB ADDRESS DATA	ACK	D/A DATA	ACK	STP
-----	--------------------	---	-----	------------------	-----	----------	-----	-----

- STA: START condition
- W : This bit is a data-transfer direction bit. A 'Zero' (LOW) is set at sending a data from master to slave.
- ACK: This is an acknowledge bit. The receiver responses a 'Zero' (LOW) to the transmitter when the receiver acknowledges data reception.
- STP: STOP condition

## DIGITAL DATA FORMAT

### SLAVE ADDRESS DATA

First						Last
MSB						LSB
1	0	0	1	A2	A1	A0
Chip Select Data						

### Chip Select Data

MSB						LSB
A2	A1	A0	CS2	CS1	CS0	
0	0	0	0	0	0	
0	0	1	0	0	1	
0	1	0	0	1	0	
⋮	⋮	⋮	⋮	⋮	⋮	
1	1	1	1	1	1	

This chip will be selected only when A0, A1 and A2 are equal to CS0, CS1 and CS2.

### SUB ADDRESS DATA

First								Last
MSB								LSB
×	×	×	×	S3	S2	S1	S0	
Don't care				Channel Select Data				

### Channel Select Data

MSB				LSB	
S3	S2	S1	S0	Channel Select	
0	0	0	0	Don't care	
0	0	0	1	ch1	
0	0	1	0	ch2	
⋮	⋮	⋮	⋮	⋮	
1	0	1	1	ch11	
1	1	0	0	ch12	
1	1	0	1	Don't care	
1	1	1	0		
1	1	1	1	Inhibit <sup>Note</sup>	

**Note** Internally Test Mode

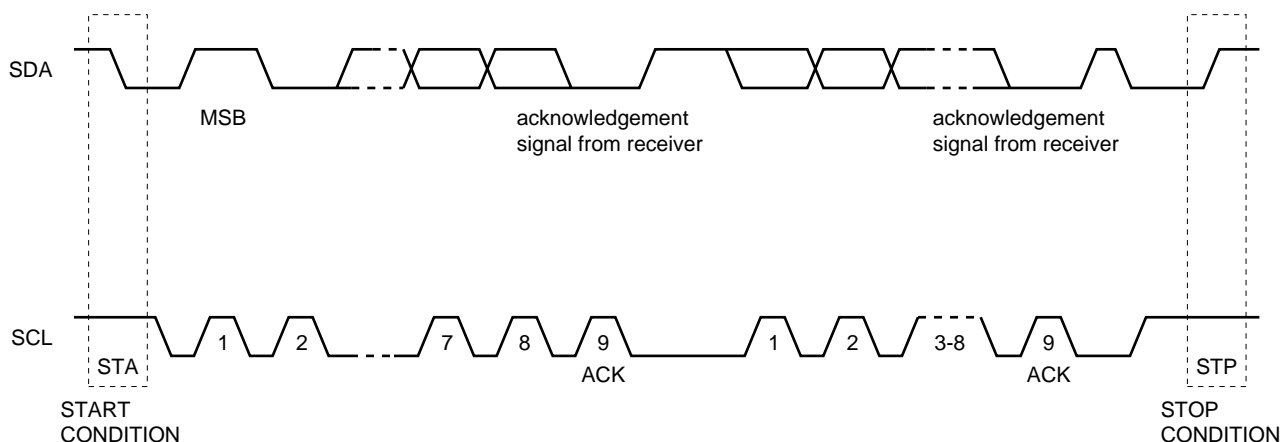
• D/A DATA

First								Last
MSB								LSB
D7	D6	D5	D4	D3	D2	D1	D0	

D/A Output Data

First								Last
MSB								LSB
D7	D6	D5	D4	D3	D2	D1	D0	D/A OUTPUT
0	0	0	0	0	0	0	0	$(V_{refU} - V_{refL}) / 256 \times 1 + V_{refL}$
0	0	0	0	0	0	0	1	$(V_{refU} - V_{refL}) / 256 \times 2 + V_{refL}$
0	0	0	0	0	0	1	0	$(V_{refU} - V_{refL}) / 256 \times 3 + V_{refL}$
0	0	0	0	0	0	1	1	$(V_{refU} - V_{refL}) / 256 \times 4 + V_{refL}$
⋮	⋮	⋮	⋮	⋮	⋮	⋮	⋮	⋮
1	1	1	1	1	1	1	0	$(V_{refU} - V_{refL}) / 256 \times 255 + V_{refL}$
1	1	1	1	1	1	1	1	$V_{refU}$

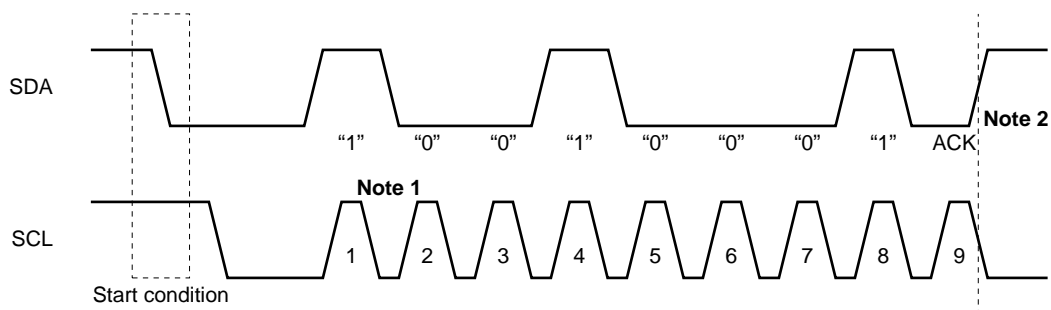
DATA TRANSFER ON THE I<sup>2</sup>C-BUS



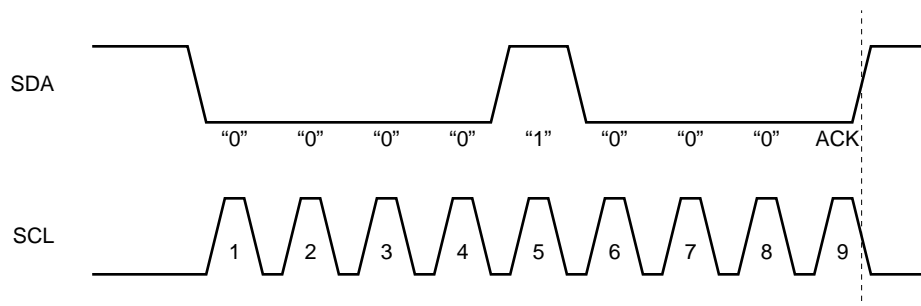
## I<sup>2</sup>C BUS ACCESS

Data example; (CS2, CS1, CS0) = (A2, A1, A0) = (0, 0, 1)  
 (S3, S2, S1, S0) = (0, 1, 0, 0) Select output 4ch  
 Digital Data = (0, 1, 0, 1, 0, 1, 0, 1)

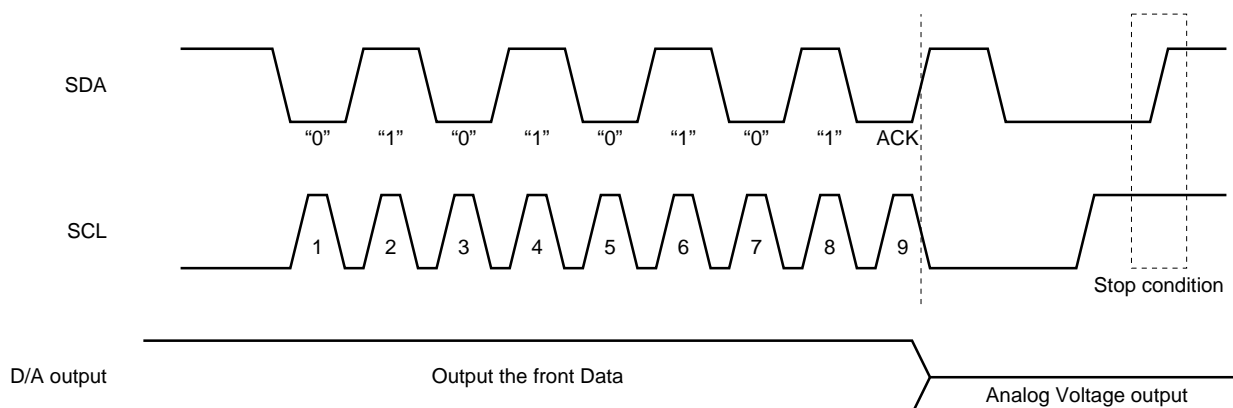
### SLAVE ADDRESS DATA BLOCK



### SUB ADDRESS DATA BLOCK



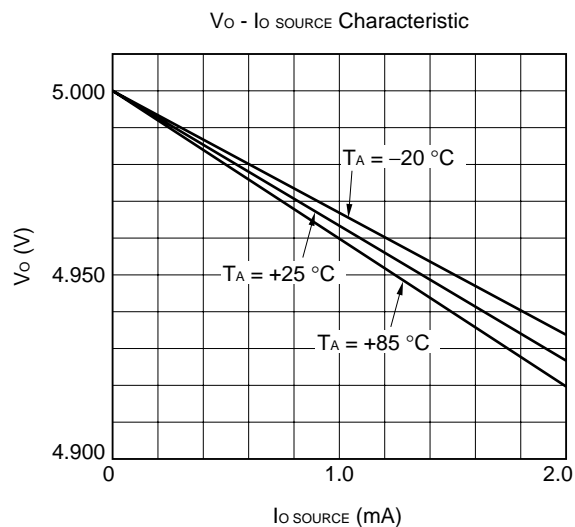
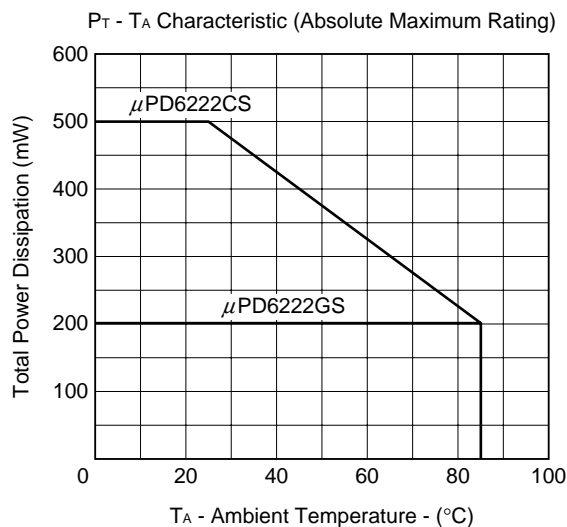
### D/A DATA BLOCK



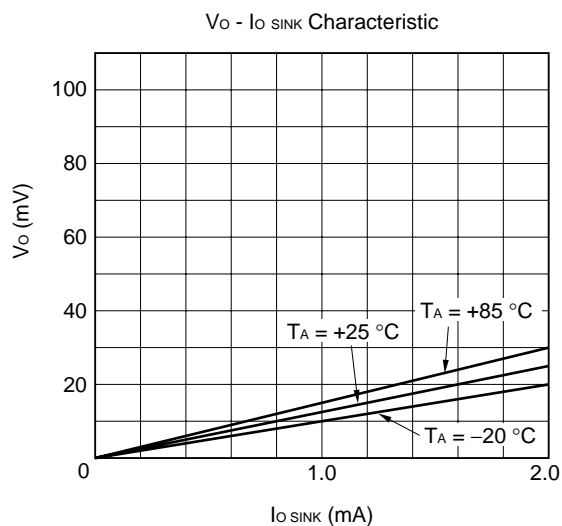
**Notes 1.** The timing of reading data in SDA is the falling edge of SCL.

**2.** The acknowledgement signal is output from SDA in fall-timing of SCL8, and releases SDA line in the fall-timing of SCL9.

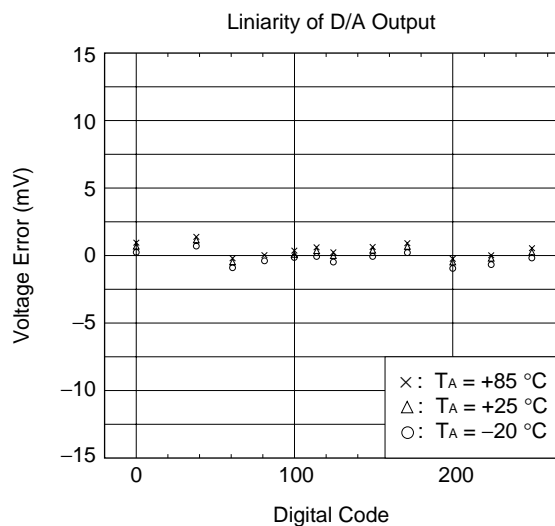
CHARACTERISTICS CURVES (TYP.)



Condition:  
 $V_{CC} = V_{refU} = +5.0\text{ V}$   
 $V_{refL} = 0\text{ V}$   
 Non Load

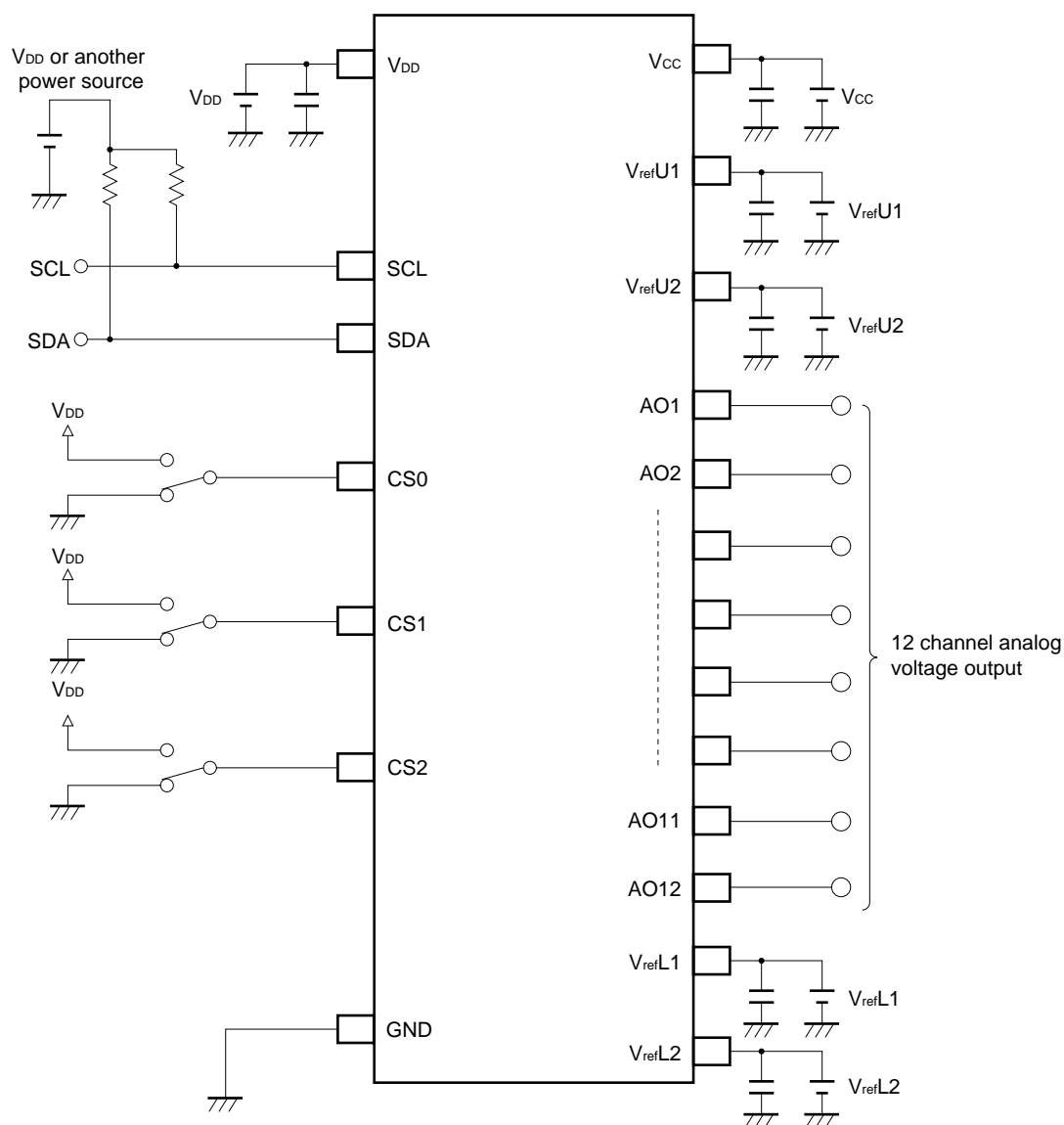


Condition:  
 $V_{CC} = V_{refU} = +5.0\text{ V}$   
 $V_{refL} = 0\text{ V}$   
 Non Load



Condition:  
 $V_{CC} = +5.5\text{ V}$   
 $V_{refU} = +4.79\text{ V}$   
 $V_{refL} = +0.95\text{ V}$  (15 mV/LSB)  
 Non Load

# APPLICATION EXAMPLE



## NOTE FOR USE

### • ABOUT INPUT VOLTAGE

This IC's  $V_{DD}$ ,  $V_{CC}$ ,  $V_{refU1}$ ,  $V_{refU2}$ ,  $V_{refL1}$ ,  $V_{refL2}$  pins must be supplied the stable voltage. When the voltage-level of these pins are added any noise signal, the analog accuracy of output voltage may be influenced by any noise signal.

Therefore, the bypass condenser is connected between these pins and GND pins for keeping the analog accuracy. And it's necessary that the bypass condenser is near IC.

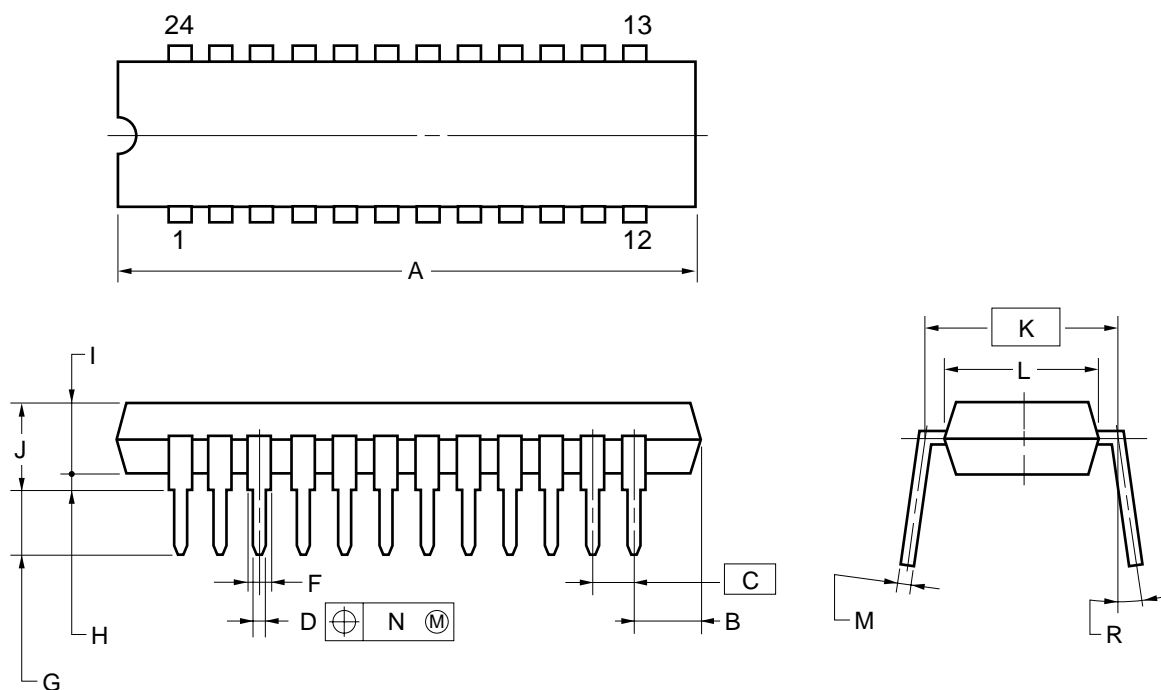
### • HANDLING RELATED TO THE UNUSED PINS

The output pins have a possibility of being unused pins.

If there are unused pins, they must not be connected.



## 24PIN PLASTIC SHRINK DIP (300 mil)

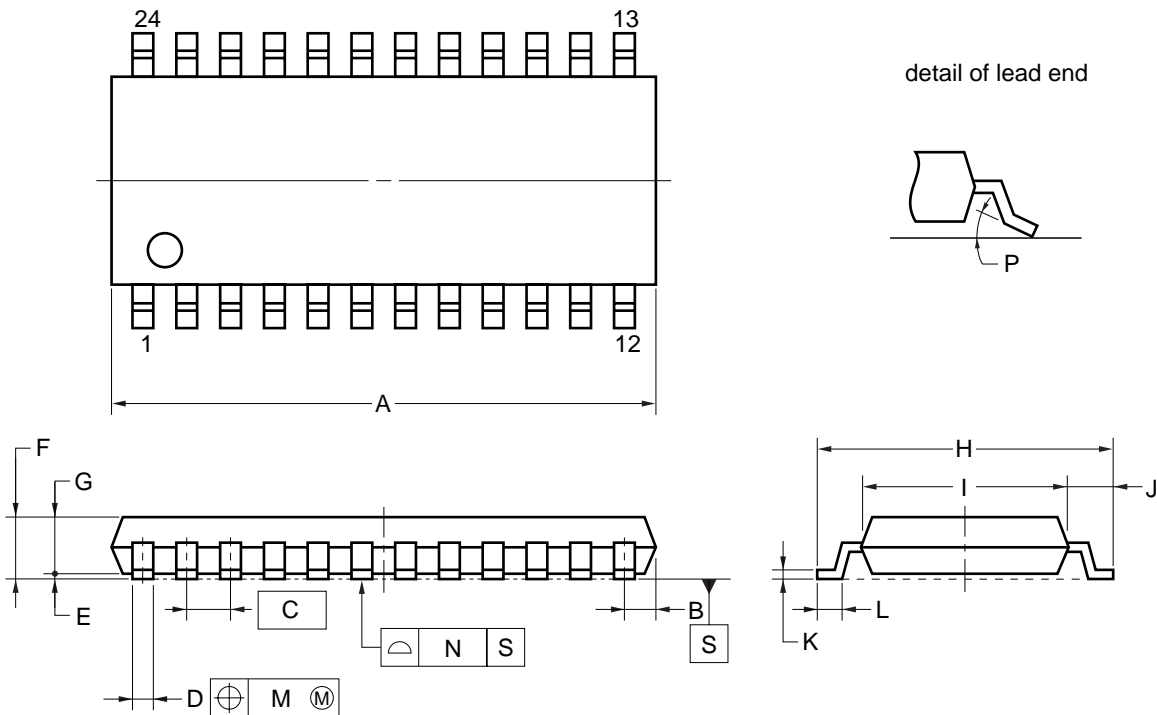


## NOTES

- 1) Each lead centerline is located within 0.17 mm (0.007 inch) of its true position (T.P.) at maximum material condition.
- 2) Item "K" to center of leads when formed parallel.

ITEM	MILLIMETERS	INCHES
A	25.40 MAX.	1.000 MAX.
B	3.0 MAX.	0.119 MAX.
C	1.778 (T.P.)	0.070 (T.P.)
D	0.50±0.10	0.020 <sup>+0.004</sup> <sub>-0.005</sub>
F	0.85 MIN.	0.033 MIN.
G	3.5±0.3	0.138±0.012
H	0.51 MIN.	0.020 MIN.
I	4.31 MAX.	0.170 MAX.
J	5.08 MAX.	0.200 MAX.
K	7.62 (T.P.)	0.300 (T.P.)
L	6.4	0.252
M	0.25 <sup>+0.10</sup> <sub>-0.05</sub>	0.010 <sup>+0.004</sup> <sub>-0.003</sub>
N	0.17	0.007
R	0~15	0~15

## 24 PIN PLASTIC SOP (300 mil)



## NOTE

1. Controlling dimension — millimeter.
2. Each lead centerline is located within 0.12 mm (0.005 inch) of its true position (T.P.) at maximum material condition.

ITEM	MILLIMETERS	INCHES
A	15.3±0.24	0.602±0.010
B	0.78 MAX.	0.031 MAX.
C	1.27 (T.P.)	0.050 (T.P.)
D	0.40 <sup>+0.10</sup> <sub>-0.05</sub>	0.016 <sup>+0.004</sup> <sub>-0.003</sub>
E	0.1±0.1	0.004±0.004
F	1.8 MAX.	0.071 MAX.
G	1.55±0.05	0.061±0.002
H	7.7±0.3	0.303±0.012
I	5.6±0.15	0.220 <sup>+0.007</sup> <sub>-0.006</sub>
J	1.05±0.2	0.041 <sup>+0.009</sup> <sub>-0.008</sub>
K	0.22 <sup>+0.08</sup> <sub>-0.07</sub>	0.009 <sup>+0.003</sup> <sub>-0.004</sub>
L	0.6±0.2	0.024 <sup>+0.008</sup> <sub>-0.009</sub>
M	0.12	0.005
N	0.10	0.004
P	3° <sup>+7°</sup> <sub>-3°</sub>	3° <sup>+7°</sup> <sub>-3°</sub>

P24GM-50-300B-5

## RECOMMENDED SOLDERING CONDITIONS

The following conditions (see tables below) must be met when soldering this product.

Please consult with our sales offices in case other soldering process is used, or in case other soldering is done under different conditions.

## TYPES OF SURFACE MOUNT DEVICE

For more details, refer to our document "SEMICONDUCTOR DEVICE MOUNTING TECHNOLOGY MANUAL" (IEI-1207).

[μPD6222GS]

Soldering method	Soldering conditions	Recommended condition symbol
Infrared ray reflow	Peak package's surface temperature: 235 °C or below, Reflow time: 30 seconds or below (210 °C or higher), Number of reflow process: 3, Exposure limit <sup>Note</sup> : None	IR35-00-3
VPS	Peak package's surface temperature: 215 °C or below, Reflow time: 40 seconds or below (200 °C or higher), Number of reflow process: 2, Exposure limit <sup>Note</sup> : None	VP15-00-2
Wave soldering	Solder temperature: 260 °C or below, Flow time: 10 seconds or below, Number of flow process: 1, Exposure limit <sup>Note</sup> : None	WS60-00-1
Partial heating method	Terminal temperature: 300 °C or below, Flow time: 3 seconds or below, Exposure limit <sup>Note</sup> : None	

**Note** Exposure limit before soldering after dry-pack package is opened.  
Storage conditions: 25 °C and relative humidity at 65 % or less.

**Caution** Do not apply more than a single process at once, except for "Partial heating method".

## TYPES OF THROUGH HOLE DEVICE

[μPD6222CS]

Soldering method	Soldering conditions	Recommended condition symbol
Wave soldering	Solder temperature: 260 °C or below, Flow time: 10 seconds or below	

## REFERENCE

Document Name	Document No.
NEC semiconductor device reliability/quality control system	IEI-1212
Quality grade on NEC semiconductor devices	C11531E
Semiconductor device mounting technology manual	C10535E
NEC IC Package Manual (CD-ROM)	C13388E
Guide to quality assurance for semiconductor devices	MEI-1202
Semiconductor selection guide	X10679E

[MEMO]

## NOTES FOR CMOS DEVICES

### ① PRECAUTION AGAINST ESD FOR SEMICONDUCTORS

**Note:** Strong electric field, when exposed to a MOS device, can cause destruction of the gate oxide and ultimately degrade the device operation. Steps must be taken to stop generation of static electricity as much as possible, and quickly dissipate it once, when it has occurred. Environmental control must be adequate. When it is dry, humidifier should be used. It is recommended to avoid using insulators that easily build static electricity. Semiconductor devices must be stored and transported in an anti-static container, static shielding bag or conductive material. All test and measurement tools including work bench and floor should be grounded. The operator should be grounded using wrist strap. Semiconductor devices must not be touched with bare hands. Similar precautions need to be taken for PW boards with semiconductor devices on it.

### ② HANDLING OF UNUSED INPUT PINS FOR MOS DEVICES

**Note:** No connection for MOS device inputs can be cause of malfunction. If no connection is provided to the input pins, it is possible that an internal input level may be generated due to noise, etc., hence causing malfunction. MOS device behaves differently than Bipolar device. Input levels of MOS device must be fixed high or low by using a pull-up or pull-down circuitry. Each unused pin should be connected to  $V_{DD}$  or GND with a resistor, if it is considered to have a possibility of being an output pin. All handling related to the unused pins must be judged device by device and related specifications governing the devices.

### ③ STATUS BEFORE INITIALIZATION OF MOS DEVICES

**Note:** Power-on does not necessarily define initial status of MOS device. Production process of MOS does not define the initial operation status of the device. Immediately after the power source is turned ON, the devices with reset function have not yet been initialized. Hence, power-on does not guarantee out-pin levels, I/O settings or contents of registers. Device is not initialized until the reset signal is received. Reset operation must be executed immediately after power-on for devices having reset function.

[MEMO]

No part of this document may be copied or reproduced in any form or by any means without the prior written consent of NEC Corporation. NEC Corporation assumes no responsibility for any errors which may appear in this document.

NEC Corporation does not assume any liability for infringement of patents, copyrights or other intellectual property rights of third parties by or arising from use of a device described herein or any other liability arising from use of such device. No license, either express, implied or otherwise, is granted under any patents, copyrights or other intellectual property rights of NEC Corporation or others.

While NEC Corporation has been making continuous effort to enhance the reliability of its semiconductor devices, the possibility of defects cannot be eliminated entirely. To minimize risks of damage or injury to persons or property arising from a defect in an NEC semiconductor device, customers must incorporate sufficient safety measures in its design, such as redundancy, fire-containment, and anti-failure features.

NEC devices are classified into the following three quality grades:

"Standard", "Special", and "Specific". The Specific quality grade applies only to devices developed based on a customer designated "quality assurance program" for a specific application. The recommended applications of a device depend on its quality grade, as indicated below. Customers must check the quality grade of each device before using it in a particular application.

Standard: Computers, office equipment, communications equipment, test and measurement equipment, audio and visual equipment, home electronic appliances, machine tools, personal electronic equipment and industrial robots

Special: Transportation equipment (automobiles, trains, ships, etc.), traffic control systems, anti-disaster systems, anti-crime systems, safety equipment and medical equipment (not specifically designed for life support)

Specific: Aircrafts, aerospace equipment, submersible repeaters, nuclear reactor control systems, life support systems or medical equipment for life support, etc.

The quality grade of NEC devices is "Standard" unless otherwise specified in NEC's Data Sheets or Data Books. If customers intend to use NEC devices for applications other than those specified for Standard quality grade, they should contact an NEC sales representative in advance.

Anti-radioactive design is not implemented in this product.