

To our customers,

Old Company Name in Catalogs and Other Documents

On April 1st, 2010, NEC Electronics Corporation merged with Renesas Technology Corporation, and Renesas Electronics Corporation took over all the business of both companies. Therefore, although the old company name remains in this document, it is a valid Renesas Electronics document. We appreciate your understanding.

Renesas Electronics website: <http://www.renesas.com>

April 1st, 2010
Renesas Electronics Corporation

Issued by: Renesas Electronics Corporation (<http://www.renesas.com>)

Send any inquiries to <http://www.renesas.com/inquiry>.

Notice

1. All information included in this document is current as of the date this document is issued. Such information, however, is subject to change without any prior notice. Before purchasing or using any Renesas Electronics products listed herein, please confirm the latest product information with a Renesas Electronics sales office. Also, please pay regular and careful attention to additional and different information to be disclosed by Renesas Electronics such as that disclosed through our website.
2. Renesas Electronics does not assume any liability for infringement of patents, copyrights, or other intellectual property rights of third parties by or arising from the use of Renesas Electronics products or technical information described in this document. No license, express, implied or otherwise, is granted hereby under any patents, copyrights or other intellectual property rights of Renesas Electronics or others.
3. You should not alter, modify, copy, or otherwise misappropriate any Renesas Electronics product, whether in whole or in part.
4. Descriptions of circuits, software and other related information in this document are provided only to illustrate the operation of semiconductor products and application examples. You are fully responsible for the incorporation of these circuits, software, and information in the design of your equipment. Renesas Electronics assumes no responsibility for any losses incurred by you or third parties arising from the use of these circuits, software, or information.
5. When exporting the products or technology described in this document, you should comply with the applicable export control laws and regulations and follow the procedures required by such laws and regulations. You should not use Renesas Electronics products or the technology described in this document for any purpose relating to military applications or use by the military, including but not limited to the development of weapons of mass destruction. Renesas Electronics products and technology may not be used for or incorporated into any products or systems whose manufacture, use, or sale is prohibited under any applicable domestic or foreign laws or regulations.
6. Renesas Electronics has used reasonable care in preparing the information included in this document, but Renesas Electronics does not warrant that such information is error free. Renesas Electronics assumes no liability whatsoever for any damages incurred by you resulting from errors in or omissions from the information included herein.
7. Renesas Electronics products are classified according to the following three quality grades: “Standard”, “High Quality”, and “Specific”. The recommended applications for each Renesas Electronics product depends on the product’s quality grade, as indicated below. You must check the quality grade of each Renesas Electronics product before using it in a particular application. You may not use any Renesas Electronics product for any application categorized as “Specific” without the prior written consent of Renesas Electronics. Further, you may not use any Renesas Electronics product for any application for which it is not intended without the prior written consent of Renesas Electronics. Renesas Electronics shall not be in any way liable for any damages or losses incurred by you or third parties arising from the use of any Renesas Electronics product for an application categorized as “Specific” or for which the product is not intended where you have failed to obtain the prior written consent of Renesas Electronics. The quality grade of each Renesas Electronics product is “Standard” unless otherwise expressly specified in a Renesas Electronics data sheets or data books, etc.
 - “Standard”: Computers; office equipment; communications equipment; test and measurement equipment; audio and visual equipment; home electronic appliances; machine tools; personal electronic equipment; and industrial robots.
 - “High Quality”: Transportation equipment (automobiles, trains, ships, etc.); traffic control systems; anti-disaster systems; anti-crime systems; safety equipment; and medical equipment not specifically designed for life support.
 - “Specific”: Aircraft; aerospace equipment; submersible repeaters; nuclear reactor control systems; medical equipment or systems for life support (e.g. artificial life support devices or systems), surgical implantations, or healthcare intervention (e.g. excision, etc.), and any other applications or purposes that pose a direct threat to human life.
8. You should use the Renesas Electronics products described in this document within the range specified by Renesas Electronics, especially with respect to the maximum rating, operating supply voltage range, movement power voltage range, heat radiation characteristics, installation and other product characteristics. Renesas Electronics shall have no liability for malfunctions or damages arising out of the use of Renesas Electronics products beyond such specified ranges.
9. Although Renesas Electronics endeavors to improve the quality and reliability of its products, semiconductor products have specific characteristics such as the occurrence of failure at a certain rate and malfunctions under certain use conditions. Further, Renesas Electronics products are not subject to radiation resistance design. Please be sure to implement safety measures to guard them against the possibility of physical injury, and injury or damage caused by fire in the event of the failure of a Renesas Electronics product, such as safety design for hardware and software including but not limited to redundancy, fire control and malfunction prevention, appropriate treatment for aging degradation or any other appropriate measures. Because the evaluation of microcomputer software alone is very difficult, please evaluate the safety of the final products or system manufactured by you.
10. Please contact a Renesas Electronics sales office for details as to environmental matters such as the environmental compatibility of each Renesas Electronics product. Please use Renesas Electronics products in compliance with all applicable laws and regulations that regulate the inclusion or use of controlled substances, including without limitation, the EU RoHS Directive. Renesas Electronics assumes no liability for damages or losses occurring as a result of your noncompliance with applicable laws and regulations.
11. This document may not be reproduced or duplicated, in any form, in whole or in part, without prior written consent of Renesas Electronics.
12. Please contact a Renesas Electronics sales office if you have any questions regarding the information contained in this document or Renesas Electronics products, or if you have any other inquiries.

(Note 1) “Renesas Electronics” as used in this document means Renesas Electronics Corporation and also includes its majority-owned subsidiaries.

(Note 2) “Renesas Electronics product(s)” means any product developed or manufactured by or for Renesas Electronics.

μ PC8130TA, μ PC8131TA

**-15 dBm INPUT, VARIABLE GAIN AMPLIFIER SILICON MMIC
FOR TRANSMITTER AGC OF DIGITAL CELLULAR TELEPHONE**

DESCRIPTION

The μ PC8130TA and μ PC8131TA are silicon monolithic integrated circuits designed as variable gain amplifier. Due to 800 MHz to 1.5 GHz operation, these ICs are suitable for RF transmitter AGC stage of digital cellular telephone. These ICs are lower distortion than conventional μ PC8119T and μ PC8120T so that -15 dBm input level can be applied. These ICs also available in two types of gain control so you can choose either IC in accordance with your system design. 3 V supply voltage and minimold package contribute to make your system lower voltage, decreased space and fewer components.

The μ PC8130TA and μ PC8131TA are manufactured using NEC's 20 GHz fr NESAT™III silicon bipolar process. This process uses silicon nitride passivation film and gold electrodes. These materials can protect chip surface from external pollution and prevent corrosion/migration. Thus, this IC has excellent performance, uniformity and reliability.

FEATURES

- Recommended operating frequency: $f = 800 \text{ MHz to } 1.5 \text{ GHz}$
- Low distortion : $P_{adj} \leq -60 \text{ dBc MAX. @ } P_{in} = -15 \text{ dBm, } \Delta f = \pm 50 \text{ kHz, } V_{cc} = 3.0 \text{ V, } T_A = +25 \text{ }^\circ\text{C}$
- Supply voltage : $V_{cc} = 2.7 \text{ to } 3.3 \text{ V}$
- Low current consumption : $I_{cc} = 11 \text{ mA TYP. @ } V_{cc} = 3.0 \text{ V}$
- Gain control voltage : $V_{AGC} = 0 \text{ to } 2.4 \text{ V (recommended)}$
- Two types of gain control : μ PC8130TA = V_{AGC} up vs. Gain up (Reverse control)
 μ PC8131TA = V_{AGC} up vs. Gain down (Forward control)
- AGC control can be constructed by external control circuit.
- High-density surface mounting : 6 pin minimold package

APPLICATION

- 800 MHz to 900 MHz or 1.5 GHz Digital cellular telephone (PDC800M, PDC1.5G and so on)

ORDERING INFORMATION

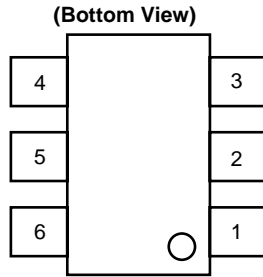
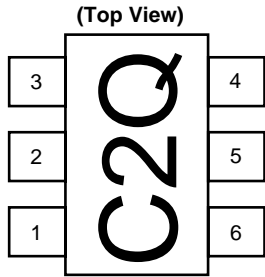
Part Number	Package	Marking	Supplying Form	Gain Control Type
μ PC8130TA-E3	6-pin minimold	C2Q	Embossed tape 8 mm wide. 1, 2, 3 pins face to perforation side of the tape. Qty 3 kp/reel.	Reverse control
μ PC8131TA-E3		C2R		Forward control

Remark To order evaluation samples, please contact your local NEC sales office.
(Part number for sample order: μ PC8130TA, μ PC8131TA)

Caution Electro-static sensitive devices.

The information in this document is subject to change without notice.

PIN CONNECTIONS



Marking is an example of μ PC8130TA

Pin No.	Pin Name
1	INPUT
2	GND
3	GND
4	OUTPUT
5	V _{CC}
6	V _{AGC}

GAIN CONTROL AMPLIFIER PRODUCT LINE-UP

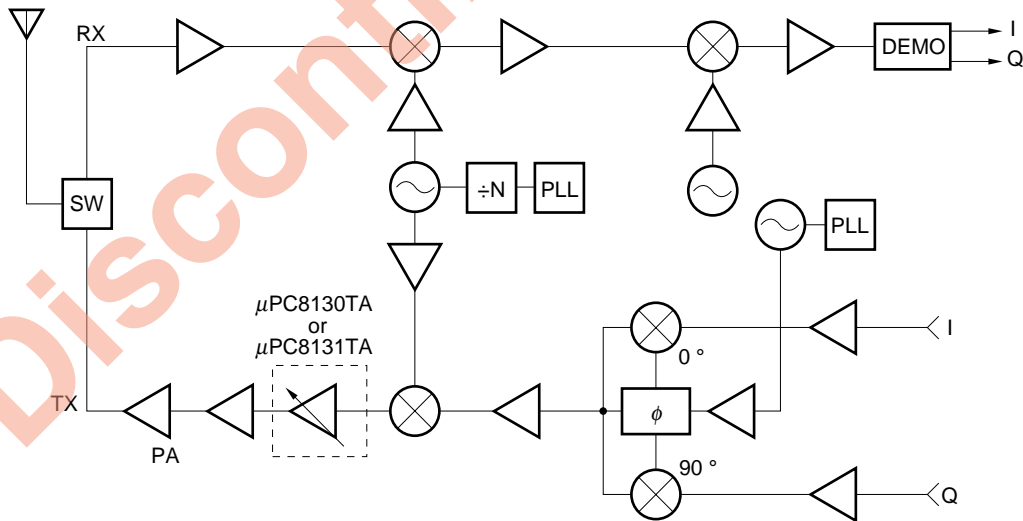
Part No.	V _{CC} (V)	I _{CC} (mA)	V _{AGC} (V)	V _{AGC} up vs. Gain	f (GHz)	P _O (1 dB)	P _{in} (dBm)	Features
μ PC2723T	4.5 to 5.5	15	3.3 to 5.0	down	up to 1.1	-4	-	
μ PC8119T	2.7 to 3.3	11	0.6 to 2.4	down	0.1 to 1.92	+3	≤ -18	PHS, PDC
μ PC8120T	2.7 to 3.3	11	0.6 to 2.4	up	0.1 to 1.92	+3	≤ -18	PHS, PDC
μ PC8130TA	2.7 to 3.3	11	0.6 to 2.4	up	0.8 to 1.5	+5	≤ -15	PDC 800 M, PDC 1.5 G
μ PC8131TA	2.7 to 3.3	11	0 to 2.4	down	0.8 to 1.5	+5	≤ -15	PDC 800 M, PDC 1.5 G

Remark Typical performance. Please refer to ELECTRICAL CHARACTERISTICS in detail.
To know the associated product, please refer to each latest data sheet.

SYSTEM APPLICATION EXAMPLE

This block diagram is an example of IF modulation digital cellular system.

The μ PC8130TA and μ PC8131TA are applicable for not only IF modulation system but also RF modulation system. This diagram is intended to show the μ PC8130TA and μ PC8131TA location in the systems.



This document is to be specified for μ PC8130TA and μ PC8131TA only. For the other part number mentioned in this document, please refer to the latest data sheet of each part number.

PIN EXPLANATION

Pin No.	Pin Name	Applied Voltage V	Pin Voltage V ^{Note}	Function and Applications	Internal Equivalent Circuit					
1	IN	–	1.4	RF input pin. This pin should be coupled with capacitor (eg 1000 pF) for DC cut. Input return loss can be improved with external impedance matching circuit.						
2 3	GND	0	–	Ground pin. This pin should be connected to system ground with minimum inductance. Ground pattern on the board should be formed as wide as possible. Ground pins must be connected together with wide ground pattern to decrease impedance difference.						
4	OUT	voltage as same as V _{CC} through external inductor	–	RF output pin. This pin is designed as open collector of high impedance. This pin must be externally equipped with matching circuits.						
5	V _{CC}	2.7 to 3.3	–	Supply voltage pin. This pin must be equipped with bypass capacitor (eg 1000 pF) to minimize its RF impedance.						
6	V _{AGC}	0 to 3.3	–	Gain control pin. The relation between product number and control performance is shown below;						
		<table border="1"> <thead> <tr> <th>Part No.</th> <th>V_{AGC} up vs. Gain</th> </tr> </thead> <tbody> <tr> <td>μPC8130TA</td> <td>up</td> </tr> <tr> <td>μPC8131TA</td> <td>down</td> </tr> </tbody> </table>		Part No.		V _{AGC} up vs. Gain	μ PC8130TA	up	μ PC8131TA	down
Part No.	V _{AGC} up vs. Gain									
μ PC8130TA	up									
μ PC8131TA	down									

Note Pin voltage is measured at V_{CC} = 3.0 V.

Discontinued Product

ABSOLUTE MAXIMUM RATINGS

Parameter	Symbol	Conditions	Ratings	Unit
Supply Voltage	V _{CC}	T _A = +25 °C, Pin 4 and 5	3.6	V
Total Circuit Current	I _{CC}	T _A = +25 °C, Pin 4 and 5	30	mA
Input Power	P _{in}	T _A = +25 °C	+10	dBm
Gain Control Voltage	V _{AGC}	T _A = +25 °C	3.6	V
Operating Ambient Temperature	T _A		-25 to +85	°C
Storage Temperature	T _{stg}		-55 to +150	°C

RECOMMENDED OPERATING CONDITIONS

Parameter	Symbol	MIN.	TYP.	MAX.	Unit	Remarks
Supply Voltage	V _{CC}	2.7	3.0	3.3	V	Same voltage should be applied to 4 and 5 pins.
Gain Control Voltage	V _{AGC}	0	-	2.4	V	-0.5 ≤ I _{AGC} ≤ 0.1 mA
Input Level	P _{in}	-	-	-15	dBm	P _{adj} ≤ -60 dBc @Δf = ±50 kHz ^{Note}
Operating Ambient Temperature	T _A	-25	+25	+85	°C	
Operating Frequency	f	800	-	1500	MHz	With external output-matching
AGC Pin Drive Current	I _{AGC}	0.5	-	-	mA	V _{AGC} ≤ 3.3 V

Note Adjacent Channel Interference (P_{adj}) wave form condition: $\pi/4$ DQPSK modulation signal, data rate = 42 kbps, rolloff ratio = 0.5, PN9 bits (pseudorandom pattern)

ELECTRICAL CHARACTERISTICS (Unless otherwise specified, $T_A = +25\text{ }^\circ\text{C}$, $V_{CC} = V_{out} = 3.0\text{ V}$, $Z_S = Z_L = 50\ \Omega$, External matched output port)

Parameter	Symbol	Test Conditions	μ PC8130TA			μ PC8131TA			Unit
			MIN.	TYP.	MAX.	MIN.	TYP.	MAX.	
Circuit Current	I_{CC}	No signal, $I_{CC} = I_{VCC} + I_{out}$	8.5	11	15	8.5	11	15	mA
Maximum Power Gain	G_{PMAX}	$f = 950\text{ MHz}$, $P_{in} = -20\text{ dBm}$	10	12.5	15	9.5	12	14.5	dB
		$f = 1440\text{ MHz}$, $P_{in} = -20\text{ dBm}$	8	11	14	8	11	14	
Gain Control Range ^{Note1}	GCR	$f = 950\text{ MHz}$, $P_{in} = -20\text{ dBm}$	40	50	–	40	45	–	dB
		$f = 1440\text{ MHz}$, $P_{in} = -20\text{ dBm}$	35	41	–	35	39	–	
Minimum Power Gain	G_{PMIN}	$f = 950\text{ MHz}$, $P_{in} = -20\text{ dBm}$	–	–37	–	–	–33	–	dB
		$f = 1440\text{ MHz}$, $P_{in} = -20\text{ dBm}$	–	–30	–	–	–28	–	
Adjacent Channel Interference (@ $\Delta f = \pm 50\text{ kHz}$ ^{Note2})	P_{adj}	$f = 950\text{ MHz}$, $P_{in} = -15\text{ dBm}$	–	–65	–60	–	–65	–60	dB
		$f = 1440\text{ MHz}$, $P_{in} = -15\text{ dBm}$	–	–65	–60	–	–65	–60	
Isolation	ISL	$f = 950\text{ MHz}$, G_{PMAX}	17	20	–	20	25	–	dB
		$f = 1440\text{ MHz}$, G_{PMAX}	20	25	–	25	30	–	
1 dB Compression Output Power	$P_{O(1\text{ dB})}$	$f = 950\text{ MHz}$, G_{PMAX}	+2	+5	–	+2	+5	–	dBm
		$f = 1440\text{ MHz}$, G_{PMAX}	+2	+5	–	+1	+4	–	
Input Return Loss	RL_{in}	$f = 950\text{ MHz}$, G_{PMAX}	3.5	6.5	–	6	9	–	dB
		$f = 1440\text{ MHz}$, G_{PMAX}	6.5	10	–	7	10.5	–	
Noise Figure	NF	$f = 950\text{ MHz}$, G_{PMAX}	–	11	14	–	11	14	dB
		$f = 1440\text{ MHz}$, G_{PMAX}	–	8.5	11.5	–	8	11	

Notes 1. Gain Control Range (GCR) specification: $GCR = G_{PMAX} - G_{PMIN}$ (dB)

Conditions μ PC8130TA: $G_{PMAX}@ V_{AGC} = V_{CC}$, $G_{PMIN}@ V_{AGC} = 0\text{ V}$

μ PC8131TA: $G_{PMAX}@ V_{AGC} = 0\text{ V}$, $G_{PMIN}@ V_{AGC} = V_{CC}$

2. Adjacent Channel Interference (P_{adj}) wave form condition: $\pi/4$ DQPSK modulation signal, data rate = 42 kbps, rolloff ratio = 0.5, PN9 bits (pseudorandom pattern)

Remark Measured on TEST CIRCUIT 1 and 2

Discontinued Product

TEST CIRCUIT1 (f = 950 MHz, both products in common)

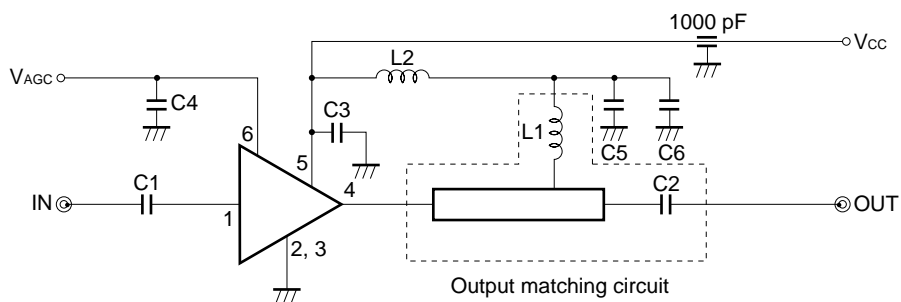
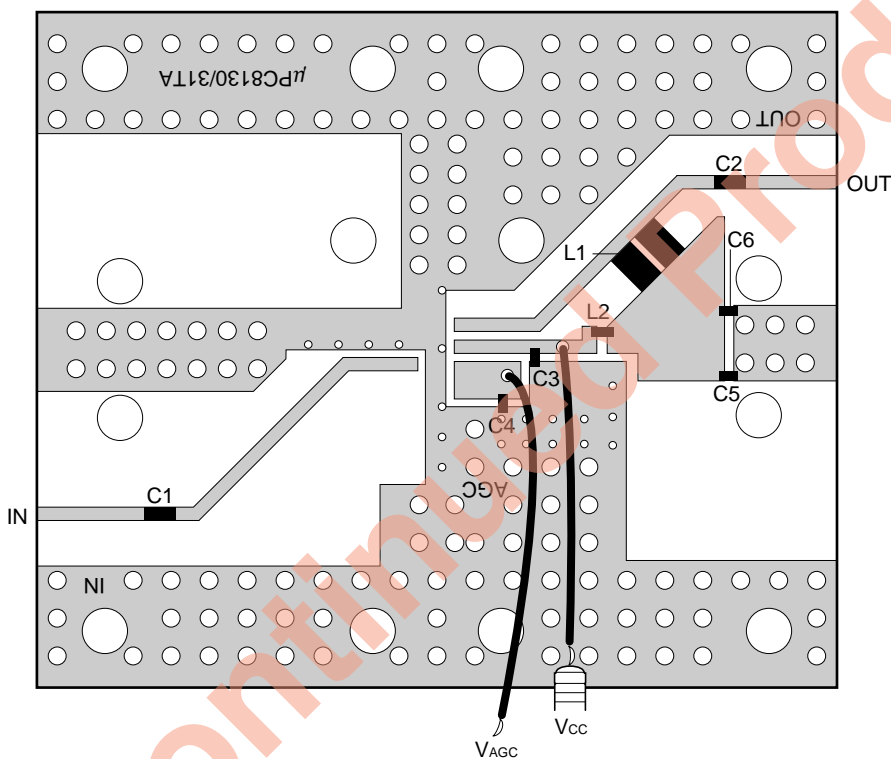


ILLUSTRATION OF TEST CIRCUIT1 ASSEMBLED ON EVALUATION BOARD



COMPONENT LIST

Form	Symbol	Value	Makers	Product Name
Chip capacitor	C1, C3 to C6	1000 pF	Murata Mfg. Co., Ltd.	GRM39 series
	C2	1.5 pF	Murata Mfg. Co., Ltd.	GRM39 series
Chip inductor	L1	4.5 nH (10 nH, 8.2 nH, parallel)	Toko Co., Ltd.	LL1608-F
	L2	270 nH	Toko Co., Ltd.	LL2012-F

Caution Test circuit or print pattern in this sheet is for testing IC characteristics.
 In the case of actual system application, external circuits including print pattern and matching circuit constant of output port should be designed in accordance with IC's S parameters and environmental components.

TEST CIRCUIT2 (f = 1440 MHz, both products in common)

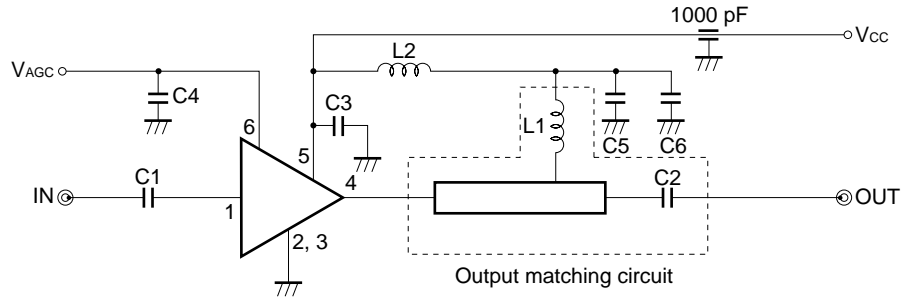
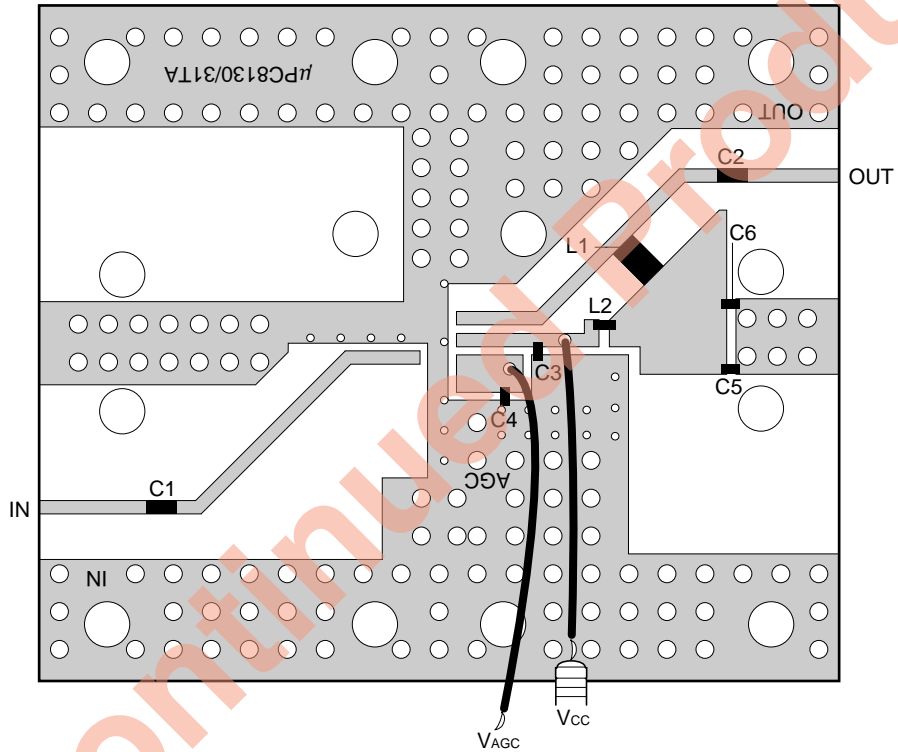


ILLUSTRATION OF TEST CIRCUIT2 ASSEMBLED ON EVALUATION BOARD



COMPONENT LIST

Form	Symbol	Value	Makers	Product Name
Chip capacitor	C1, C3 to C6	1000 pF	Murata Mfg. Co., Ltd.	GRM39 series
	C2	1.5 pF	Murata Mfg. Co., Ltd.	GRM39 series
Chip inductor	L1	1.2 nH	Toko Co., Ltd.	LL1608-F
	L2	270 nH	Toko Co., Ltd.	LL2012-F

Caution Test circuit or print pattern in this sheet is for testing IC characteristics.

In the case of actual system application, external circuits including print pattern and matching circuit constant of output port should be designed in accordance with IC's S parameters and environmental components.

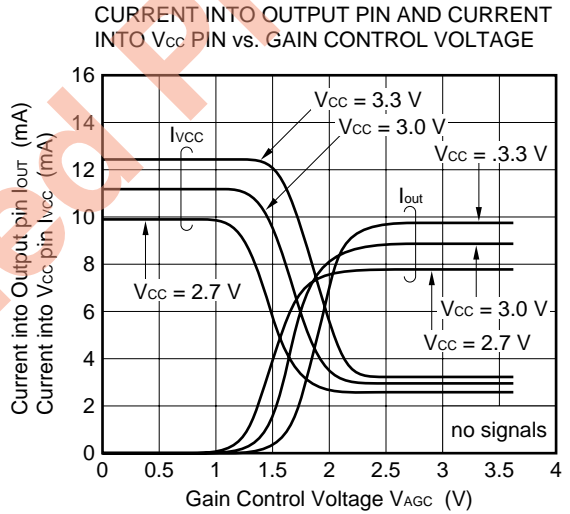
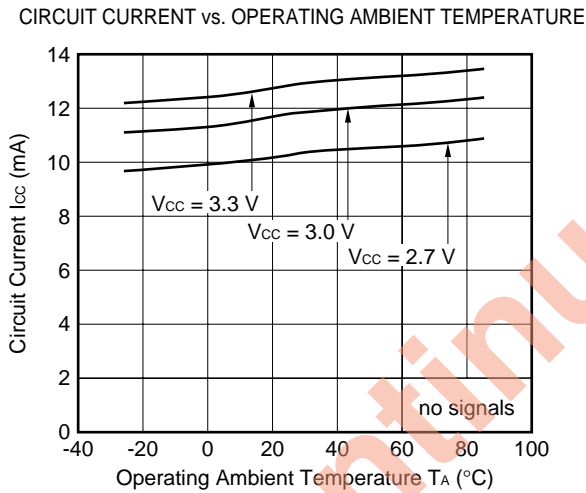
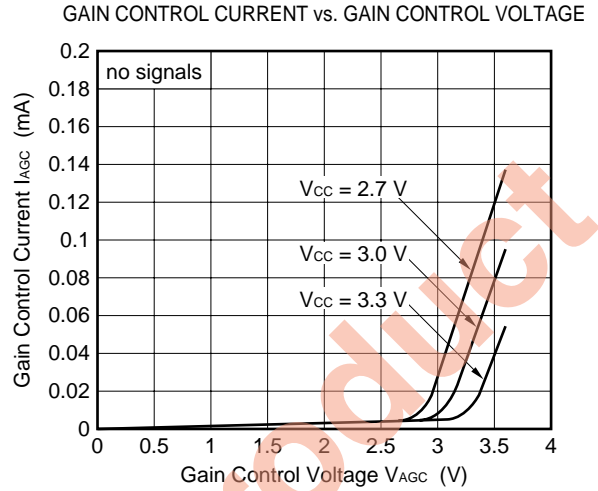
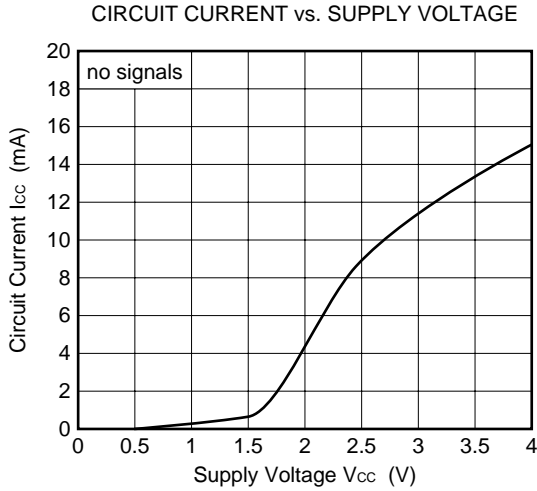
APPLICATION EXPLANATION

The μ PC8130TA and μ PC8131TA has difference in internal circuit in order to reduce the number of external component with μ PC8119T and μ PC8120T. For this reason, they have difference in mechanism for determining minimum gain and external suitable constant.

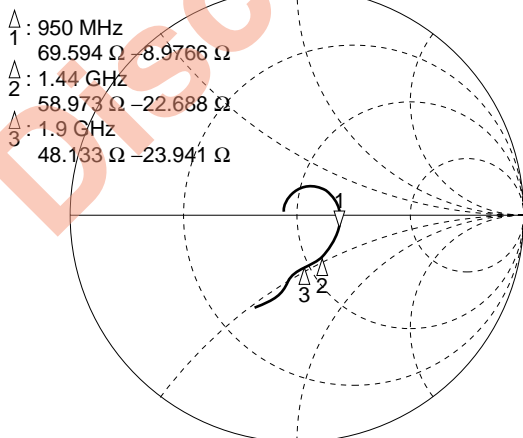
	Determining Minimum Gain	External Feedback Capacitor of V_{CC} to V_{AGC} Pin	Optimize Choke Inductance of π Type Circuit on V_{CC} Line
μ PC8119T μ PC8120T	High frequency negative feed back between OUT, V_{CC} and V_{AGC} pin optimized by external choke inductance.	Necessary	The impedance of inductance should be very low at high frequency region.
μ PC8130TA μ PC8131TA	Isolation of V_{CC} to OUT pin optimized by external choke inductance.	Unnecessary	The impedance of inductance should be very high at high frequency region.

★ TYPICAL CHARACTERISTICS

μ PC8130TA

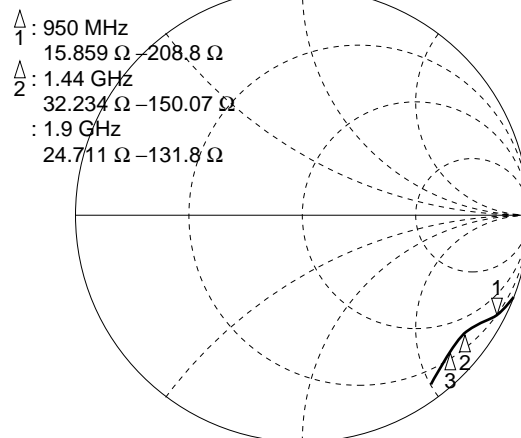


S_{11} vs. FREQUENCY
 $V_{CC} = V_{AGC} = 3.0V$ (G_PMAX), $P_{in} = -20$ dBm
 S_{11}



START 100.000 000 MHz STOP 3 100.000 000 MHz

S_{22} vs. FREQUENCY
 $V_{CC} = V_{AGC} = 3.0V$ (G_PMAX), $P_{in} = -20$ dBm
 S_{22}



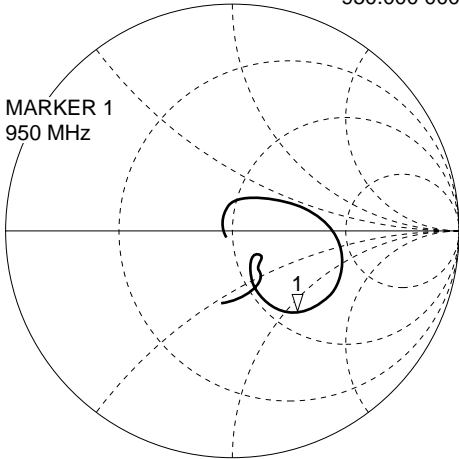
START 800.000 000 MHz STOP 2 700.000 000 MHz

μ PC8130TA

Output port matching at f = 950 MHz

$V_{CC} = V_{AGC} = 3.0$ V (G_PMAX), $P_{in} = -20$ dBm

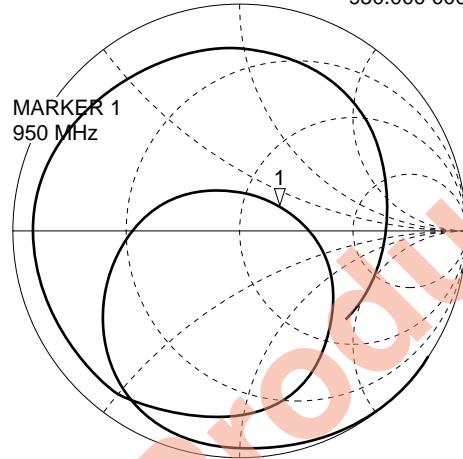
S_{11} vs. FREQUENCY 1: 65.098 Ω -56.266 Ω 2.9775 pF
950.000 000 MHz



START 100.000 000 MHz STOP 3 100.000 000 MHz

$V_{CC} = V_{AGC} = 3.0$ V (G_PMAX), $P_{in} = -20$ dBm

S_{22} vs. FREQUENCY 1: 69.219 Ω 13.313 Ω 2.2303 nH
950.000 000 MHz

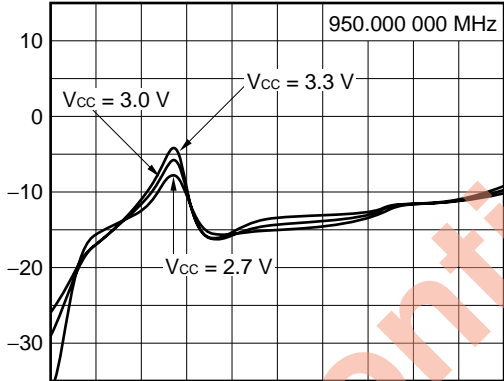


START 100.000 000 MHz STOP 3 100.000 000 MHz

S_{11} vs. FREQUENCY

$V_{AGC} = V_{CC}$ (G_PMAX), $P_{in} = -20$ dBm

S_{11} log MAG 5 dB/REF 0 dB 1: -6.8118 dB

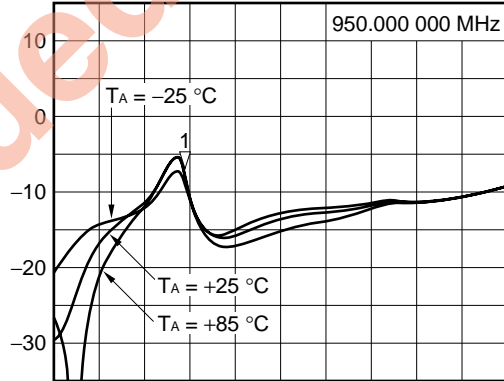


START 100.000 000 MHz STOP 3 100.000 000 MHz

S_{11} vs. FREQUENCY

$V_{CC} = V_{AGC} = 3.0$ V (G_PMAX), $P_{in} = -20$ dBm

S_{11} log MAG 5 dB/REF 0 dB 1: -5.9537 dB

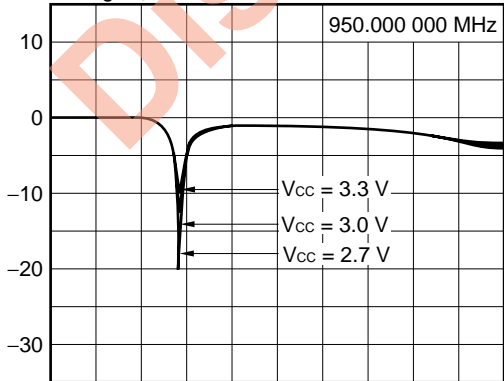


START 100.000 000 MHz STOP 3 100.000 000 MHz

S_{22} vs. FREQUENCY

$V_{AGC} = V_{CC}$ (G_PMAX), $P_{in} = -20$ dBm

S_{22} log MAG 5 dB/REF 0 dB 1: -13.235 dB

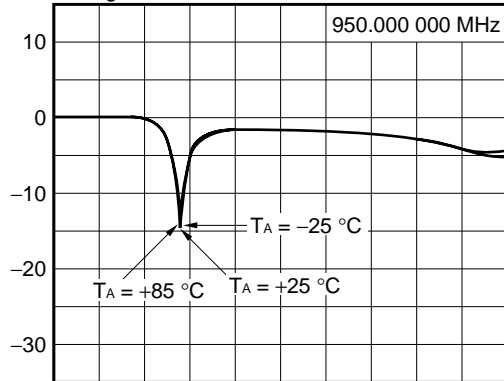


START 100.000 000 MHz STOP 3 100.000 000 MHz

S_{22} vs. FREQUENCY

$V_{CC} = V_{AGC} = 3.0$ V (G_PMAX), $P_{in} = -20$ dBm

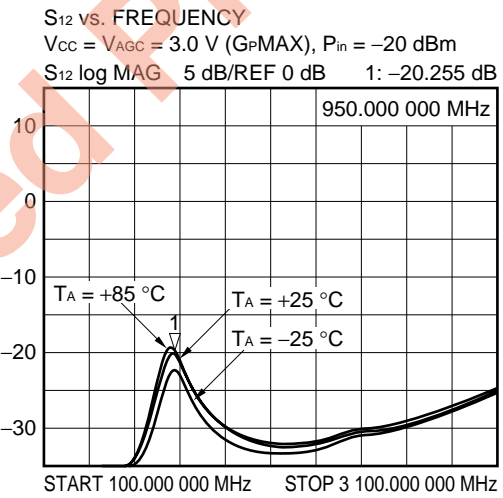
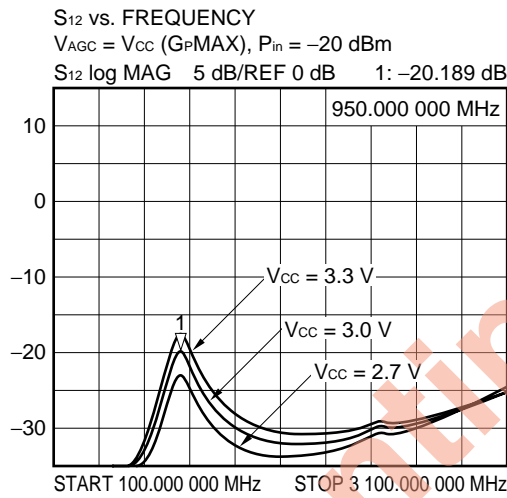
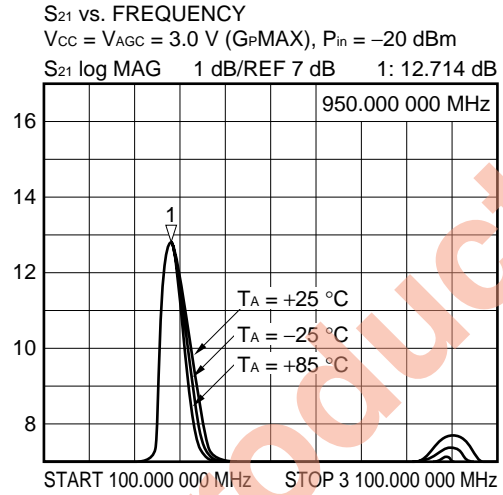
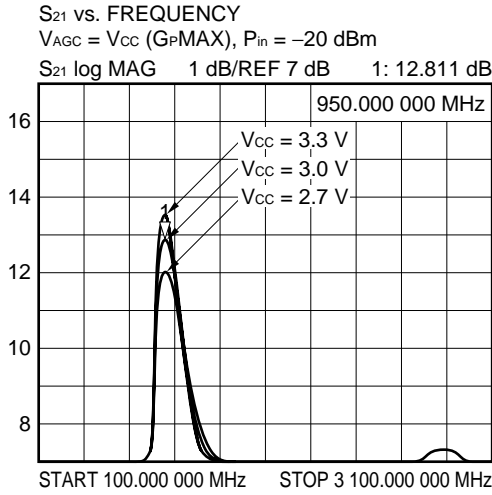
S_{22} log MAG 5 dB/REF 0 dB 1: -12.477 dB



START 100.000 000 MHz STOP 3 100.000 000 MHz

μ PC8130TA

Output port matching at $f = 950$ MHz

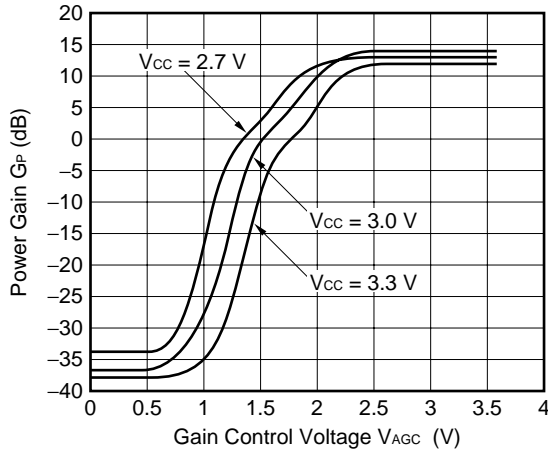


Discontinued Product

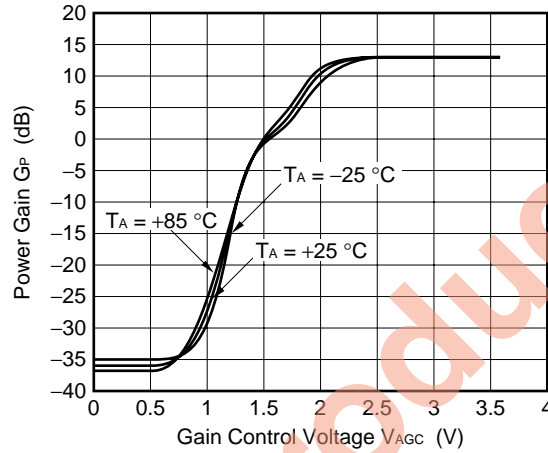
μ PC8130TA

Output port matching at f = 950 MHz

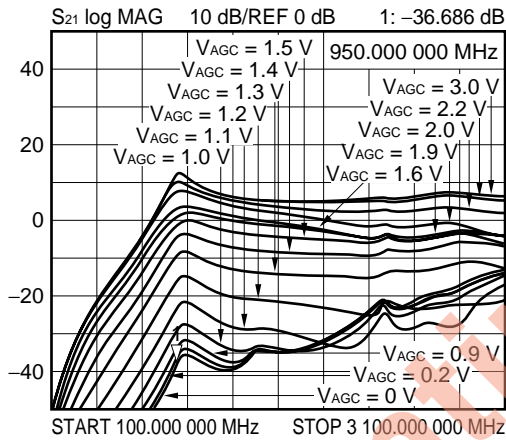
POWER GAIN vs. GAIN CONTROL VOLTAGE



POWER GAIN vs. GAIN CONTROL VOLTAGE



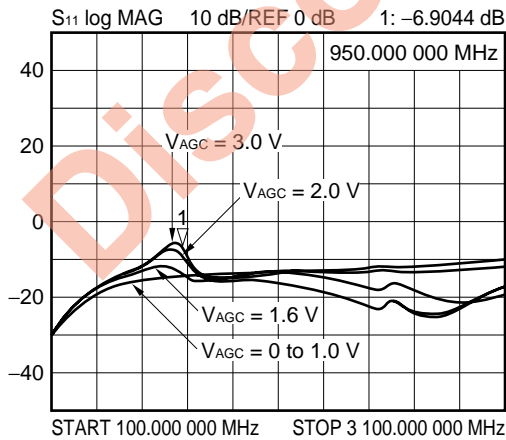
S₂₁ vs. FREQUENCY DEPENDENCE OF GAIN CONTROL VOLTAGE
 $V_{CC} = 3.0\text{ V}$, $P_{in} = -20\text{ dBm}$



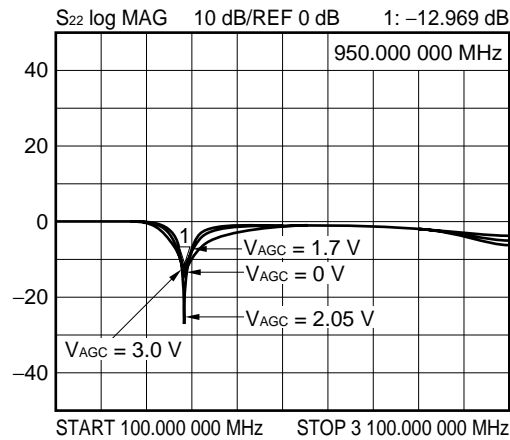
S₁₂ vs. FREQUENCY DEPENDENCE OF GAIN CONTROL VOLTAGE
 $V_{CC} = 3.0\text{ V}$, $P_{in} = -20\text{ dBm}$



S₁₁ vs. FREQUENCY DEPENDENCE OF GAIN CONTROL VOLTAGE
 $V_{CC} = 3.0\text{ V}$, $P_{in} = -20\text{ dBm}$

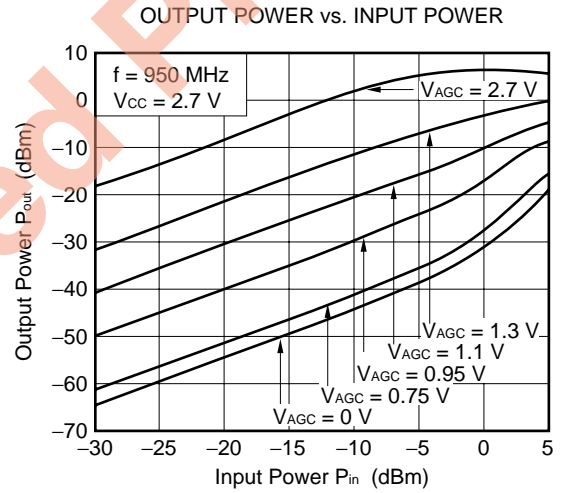
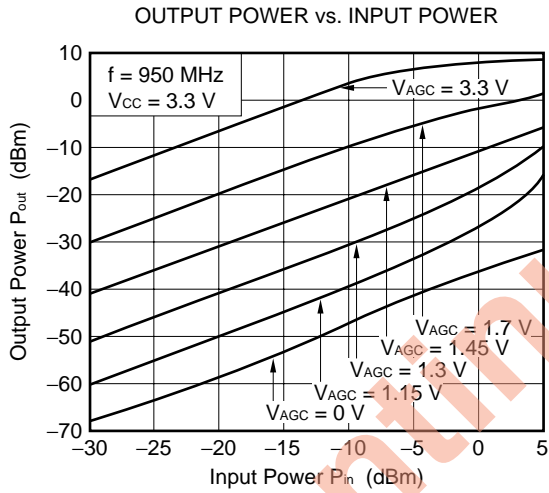
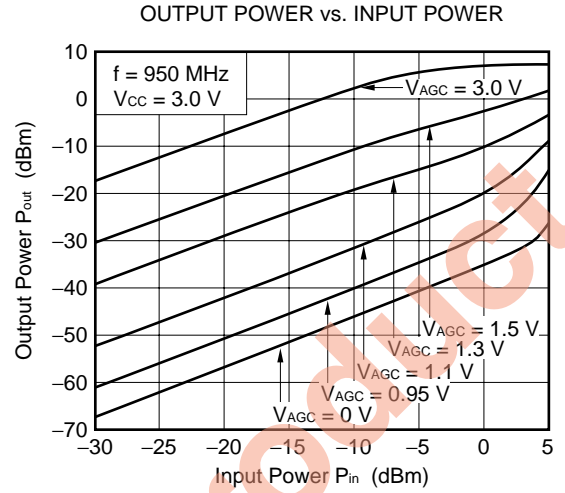
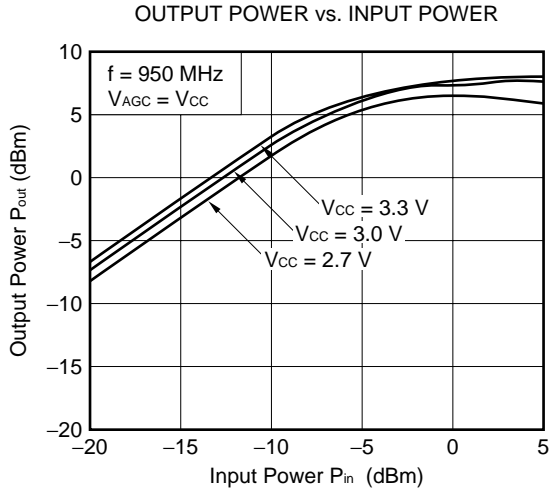


S₂₂ vs. FREQUENCY DEPENDENCE OF GAIN CONTROL VOLTAGE
 $V_{CC} = 3.0\text{ V}$, $P_{in} = -20\text{ dBm}$



μ PC8130TA

Output port matching at $f = 950$ MHz

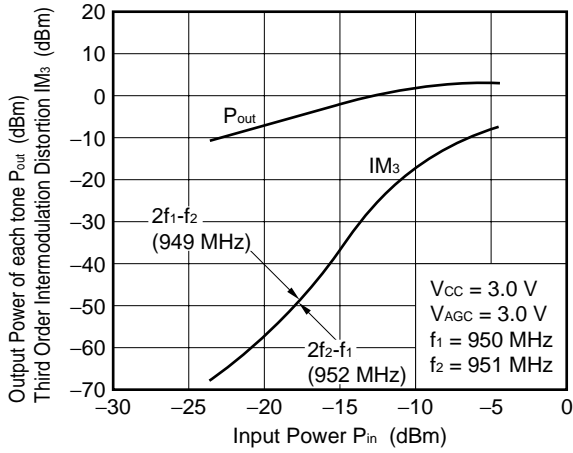


Discontinued

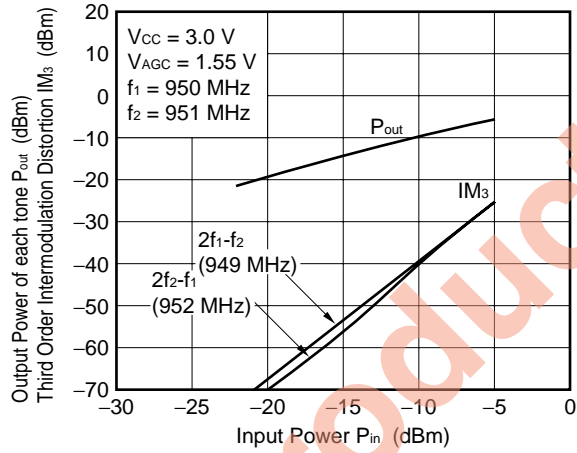
μ PC8130TA

Output port matching at $f = 950$ MHz

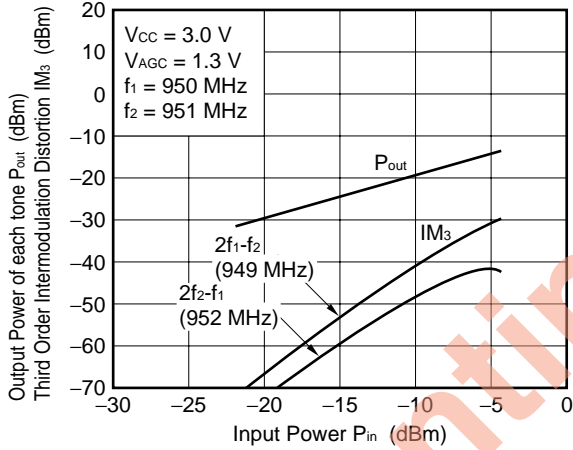
OUTPUT POWER AND IM₃ vs. INPUT POWER



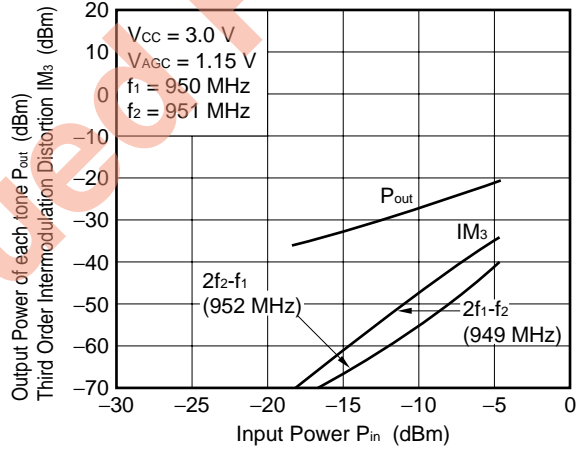
OUTPUT POWER AND IM₃ vs. INPUT POWER



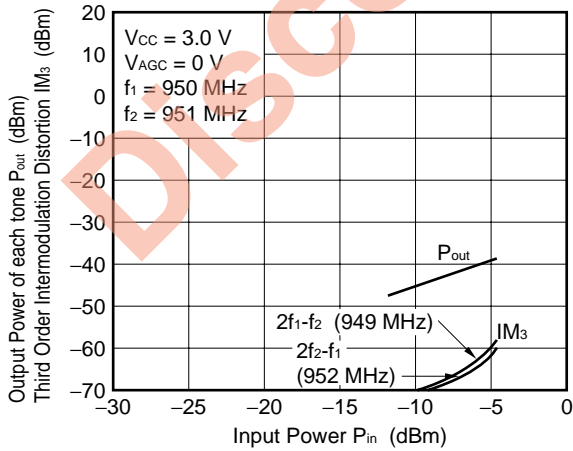
OUTPUT POWER AND IM₃ vs. INPUT POWER



OUTPUT POWER AND IM₃ vs. INPUT POWER



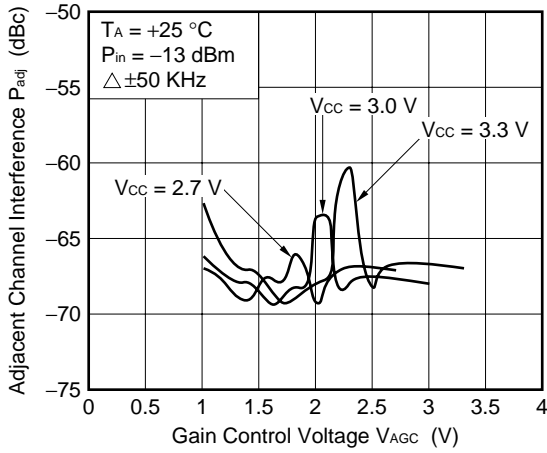
OUTPUT POWER AND IM₃ vs. INPUT POWER



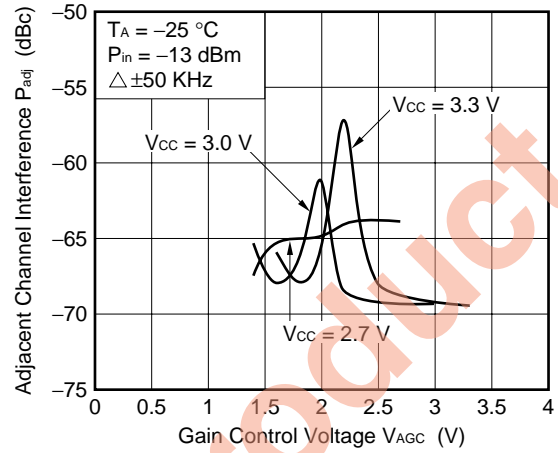
μ PC8130TA

Output port matching at $f = 950$ MHz

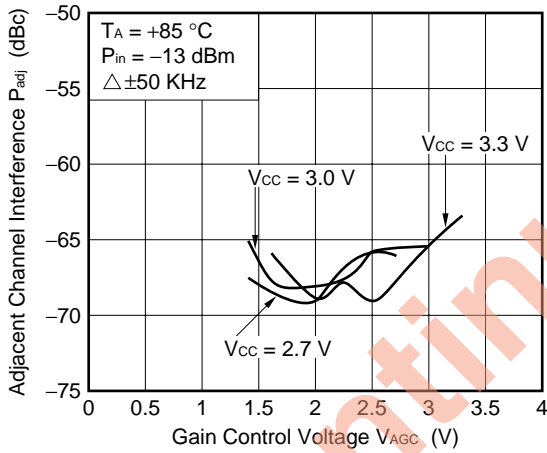
ADJACENT CHANNEL INTERFERENCE vs. GAIN CONTROL VOLTAGE



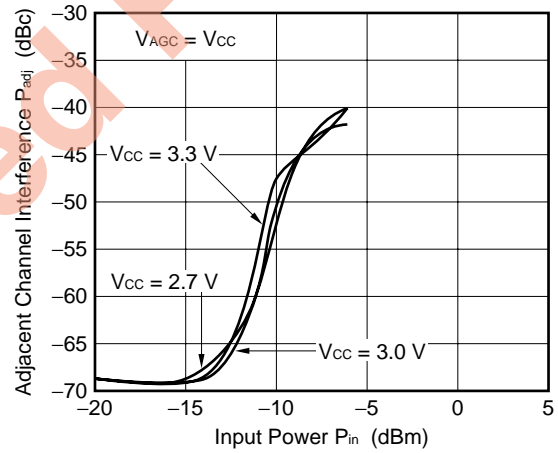
ADJACENT CHANNEL INTERFERENCE vs. GAIN CONTROL VOLTAGE



ADJACENT CHANNEL INTERFERENCE vs. GAIN CONTROL VOLTAGE



ADJACENT CHANNEL INTERFERENCE vs. INPUT POWER



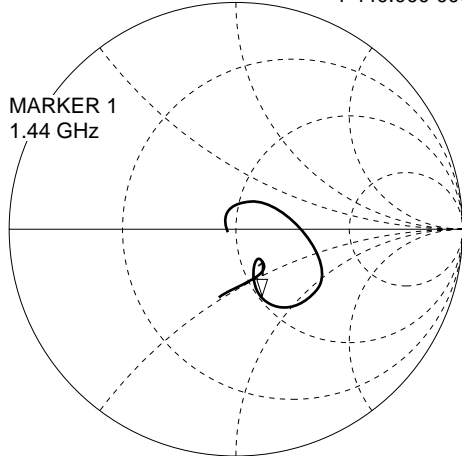
Discontinued product

μ PC8130TA

Output port matching at f = 1440 MHz

$V_{CC} = V_{AGC} = 3.0$ V (G_PMAX), $P_{in} = -20$ dBm

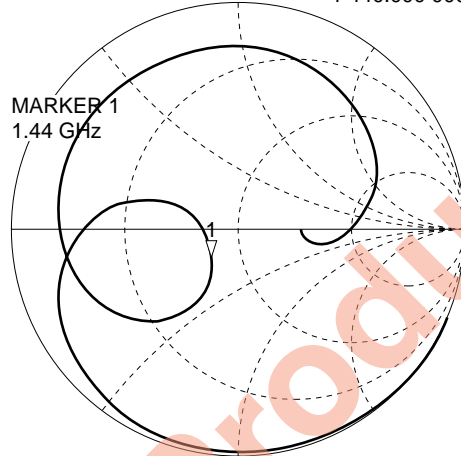
S₁₁ vs. FREQUENCY 1: 51.363 Ω -34.424 Ω 3.2107 pF
1 440.000 000 MHz



START 100.000 000 MHz STOP 3 100.000 000 MHz

$V_{CC} = V_{AGC} = 3.0$ V (G_PMAX), $P_{in} = -20$ dBm

S₂₂ vs. FREQUENCY 1: 37.857 Ω -11.791 Ω 9.3736 pF
1 440.000 000 MHz

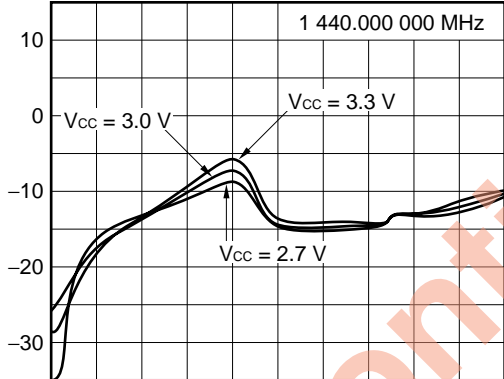


START 100.000 000 MHz STOP 3 100.000 000 MHz

S₁₁ vs. FREQUENCY

$V_{AGC} = V_{CC}$ (G_PMAX), $P_{in} = -20$ dBm

S₁₁ log MAG 5 dB/REF 0 dB 1: -9.8796 dB

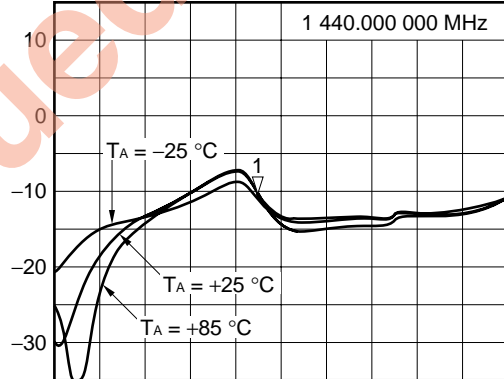


START 100.000 000 MHz STOP 3 100.000 000 MHz

S₁₁ vs. FREQUENCY

$V_{CC} = V_{AGC} = 3.0$ V (G_PMAX), $P_{in} = -20$ dBm

S₁₁ log MAG 5 dB/REF 0 dB 1: -9.5571 dB

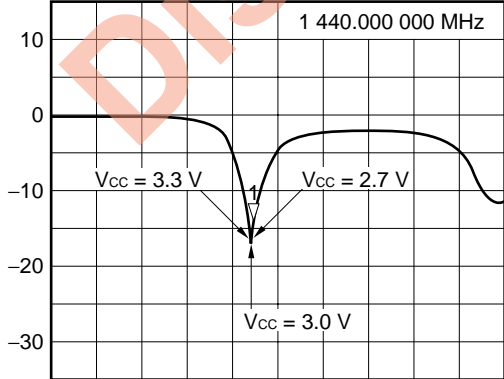


START 100.000 000 MHz STOP 3 100.000 000 MHz

S₂₂ vs. FREQUENCY

$V_{AGC} = V_{CC}$ (G_PMAX), $P_{in} = -20$ dBm

S₂₂ log MAG 5 dB/REF 0 dB 1: -14.444 dB

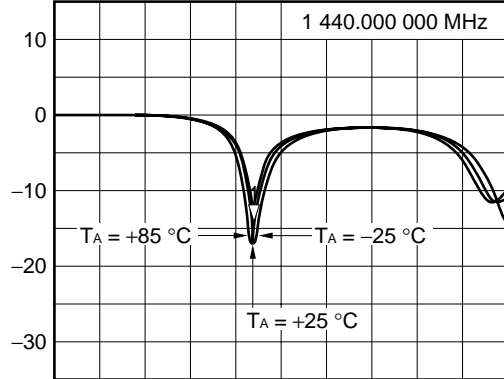


START 100.000 000 MHz STOP 3 100.000 000 MHz

S₂₂ vs. FREQUENCY

$V_{CC} = V_{AGC} = 3.0$ V (G_PMAX), $P_{in} = -20$ dBm

S₂₂ log MAG 5 dB/REF 0 dB 1: -14.139 dB

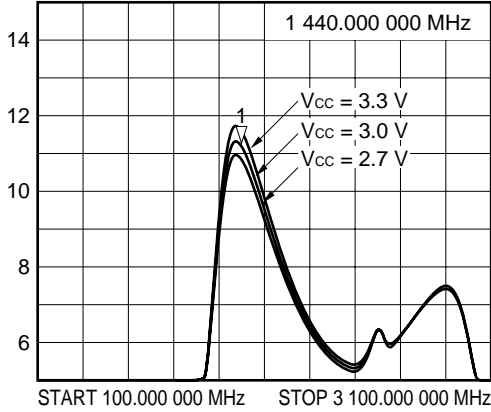


START 100.000 000 MHz STOP 3 100.000 000 MHz

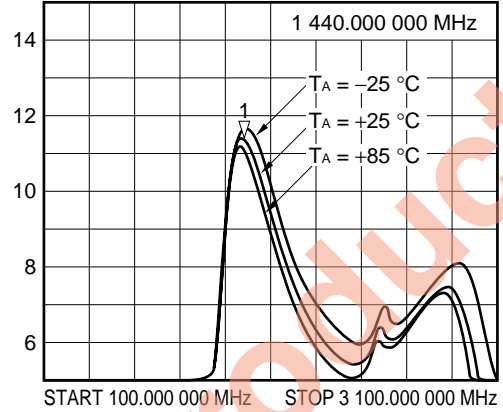
μ PC8130TA

Output port matching at $f = 1440$ MHz

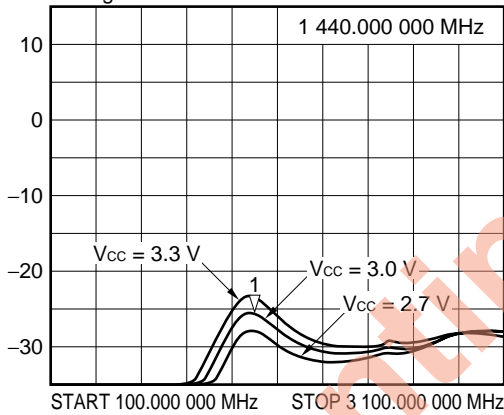
S₂₁ vs. FREQUENCY
 V_{AGC} = V_{CC} (G_PMAX), P_{in} = -20 dBm
 S₂₁ log MAG 1 dB/REF 5 dB 1: -11.31 dB



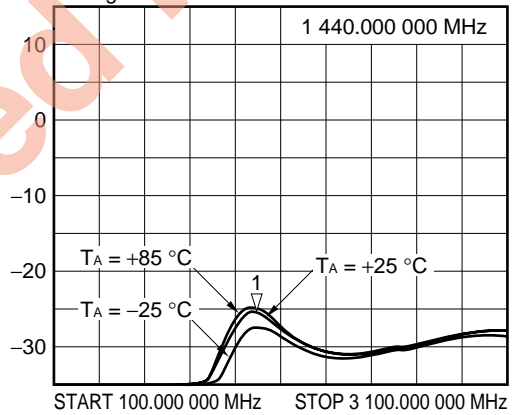
S₂₁ vs. FREQUENCY
 V_{CC} = V_{AGC} = 3.0 V (G_PMAX), P_{in} = -20 dBm
 S₂₁ log MAG 1 dB/REF 5 dB 1: -11.291 dB



S₁₂ vs. FREQUENCY
 V_{AGC} = V_{CC} (G_PMAX), P_{in} = -20 dBm
 S₁₂ log MAG 5 dB/REF 0 dB 1: -25.647 dB



S₁₂ vs. FREQUENCY
 V_{CC} = V_{AGC} = 3.0 V (G_PMAX), P_{in} = -20 dBm
 S₁₂ log MAG 5 dB/REF 0 dB 1: -25.515 dB

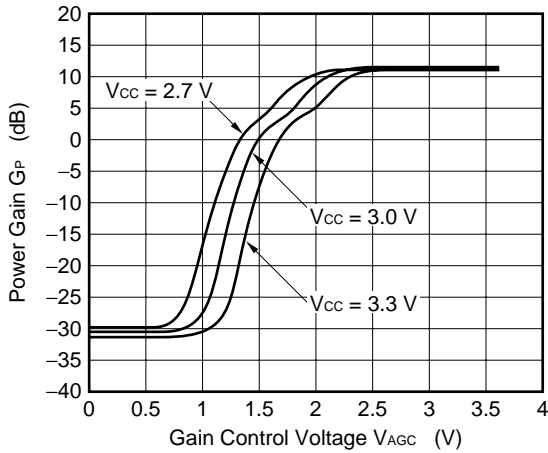


Discontinued Product

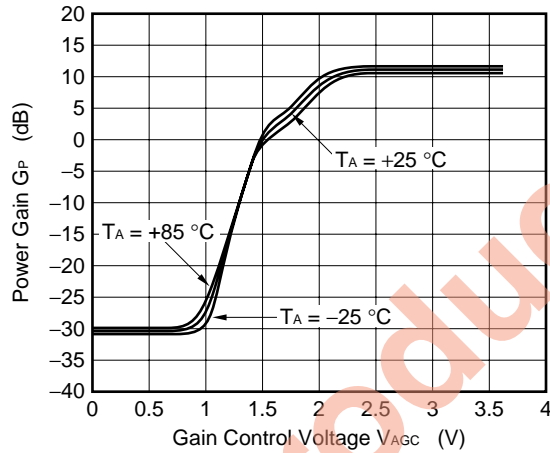
μ PC8130TA

Output port matching at $f = 1440$ MHz

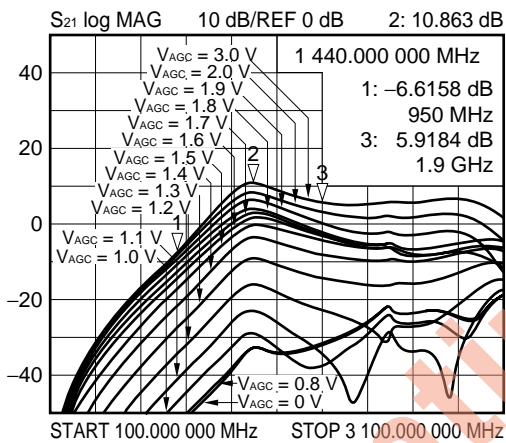
POWER GAIN vs. GAIN CONTROL VOLTAGE



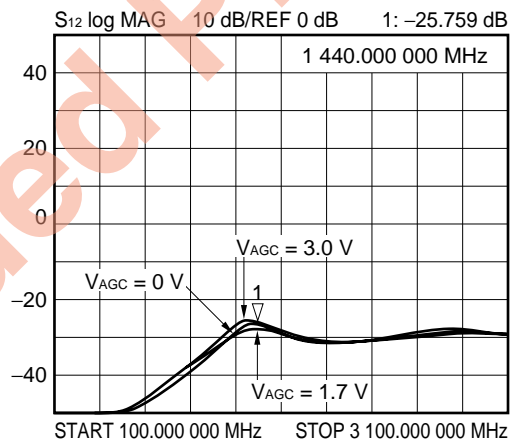
POWER GAIN vs. GAIN CONTROL VOLTAGE



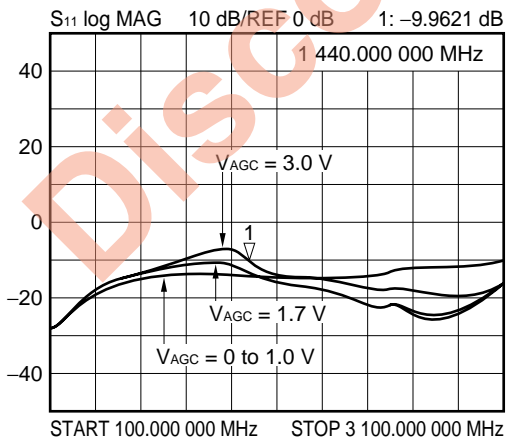
S_{21} vs. FREQUENCY DEPENDENCE OF GAIN CONTROL VOLTAGE
 $V_{CC} = 3.0$ V, $P_{in} = -20$ dBm



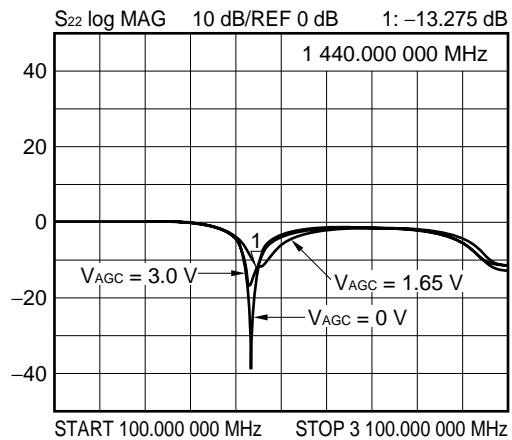
S_{12} vs. FREQUENCY DEPENDENCE OF GAIN CONTROL VOLTAGE
 $V_{CC} = 3.0$ V, $P_{in} = -20$ dBm



S_{11} vs. FREQUENCY DEPENDENCE OF GAIN CONTROL VOLTAGE
 $V_{CC} = 3.0$ V, $P_{in} = -20$ dBm

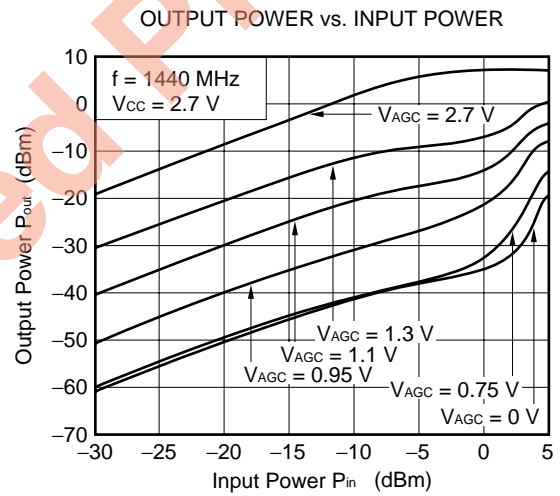
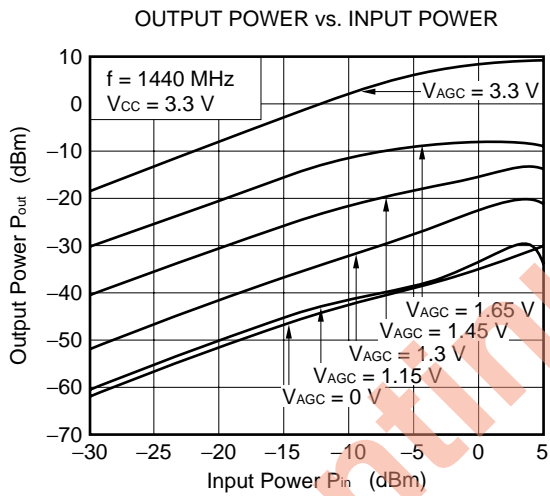
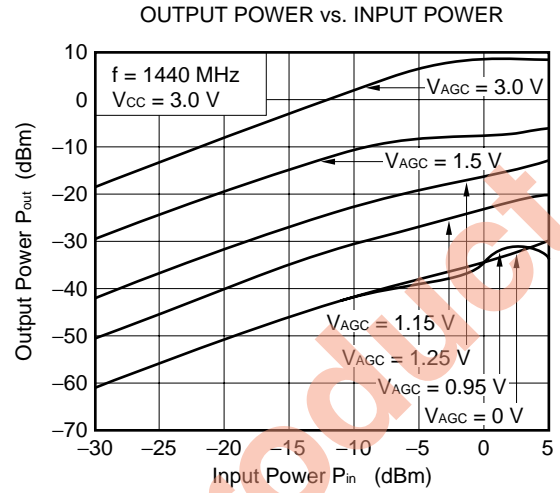
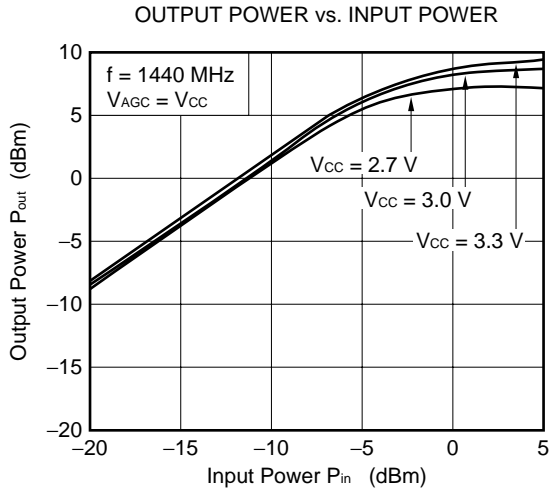


S_{22} vs. FREQUENCY DEPENDENCE OF GAIN CONTROL VOLTAGE
 $V_{CC} = 3.0$ V, $P_{in} = -20$ dBm



μ PC8130TA

Output port matching at $f = 1440$ MHz

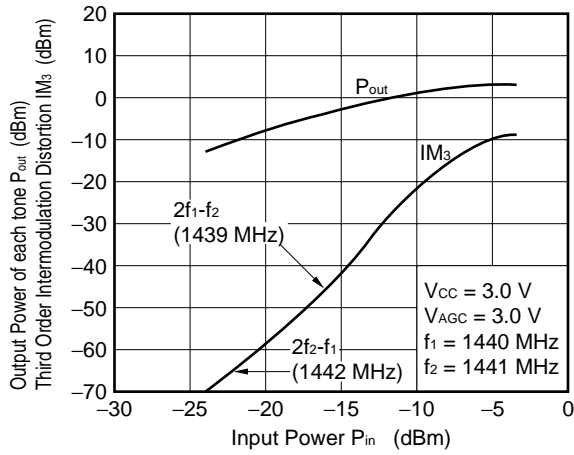


Discontinued Product

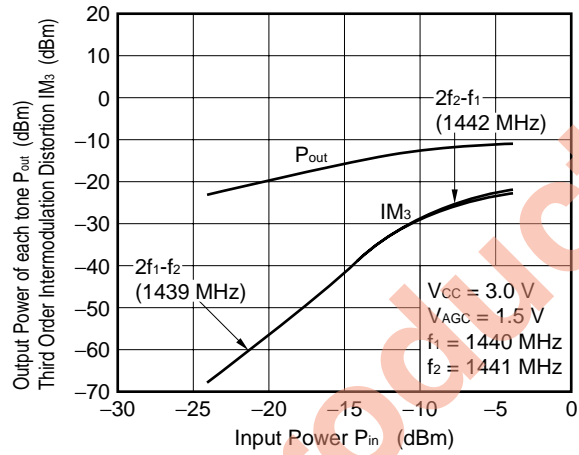
μ PC8130TA

Output port matching at $f = 1440$ MHz

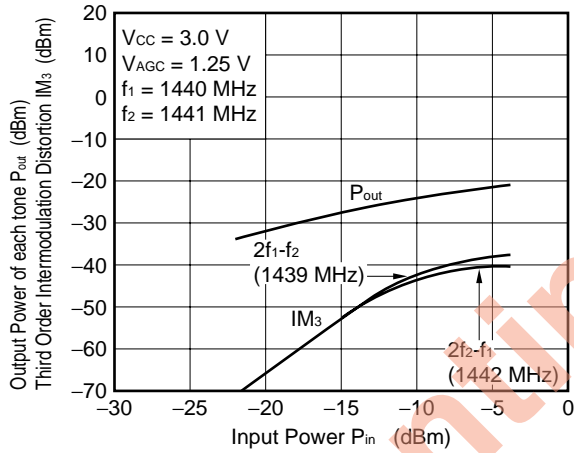
OUTPUT POWER AND IM₃ vs. INPUT POWER



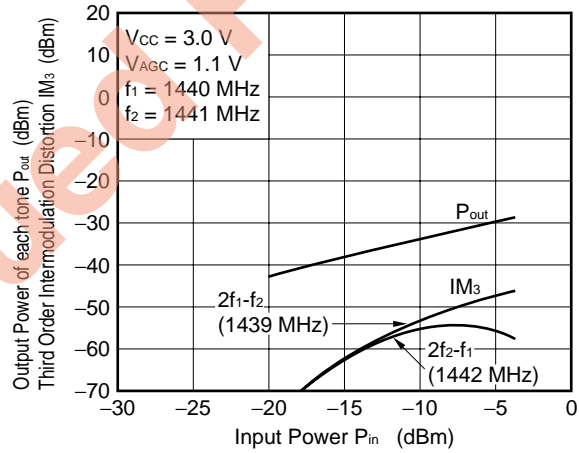
OUTPUT POWER AND IM₃ vs. INPUT POWER



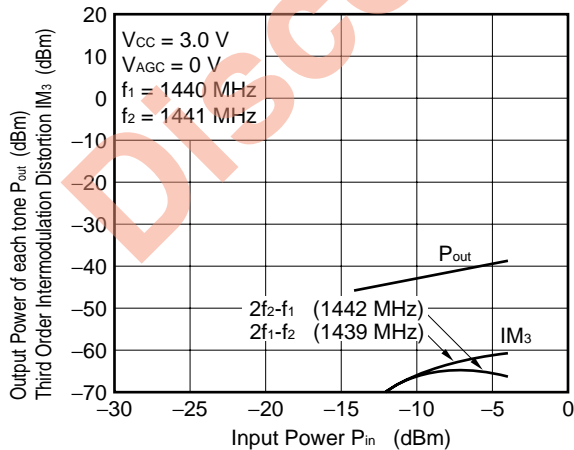
OUTPUT POWER AND IM₃ vs. INPUT POWER



OUTPUT POWER AND IM₃ vs. INPUT POWER



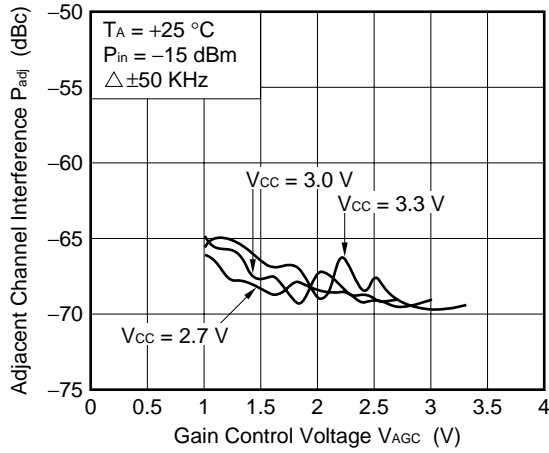
OUTPUT POWER AND IM₃ vs. INPUT POWER



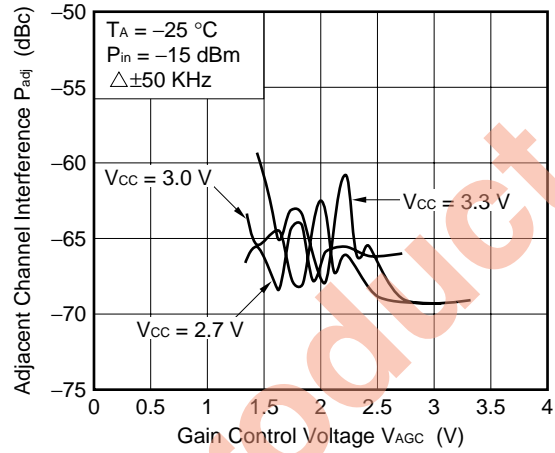
μ PC8130TA

Output port matching at $f = 1440$ MHz

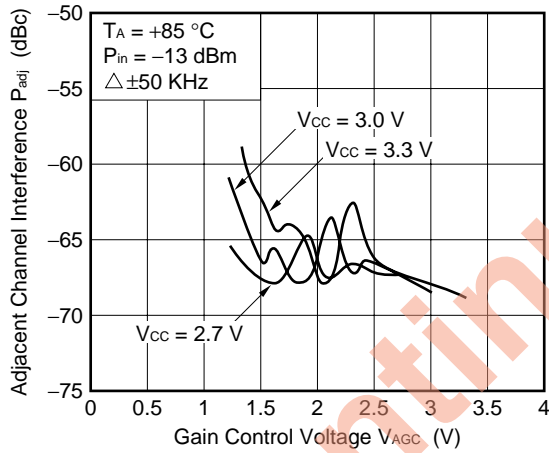
ADJACENT CHANNEL INTERFERENCE vs. GAIN CONTROL VOLTAGE



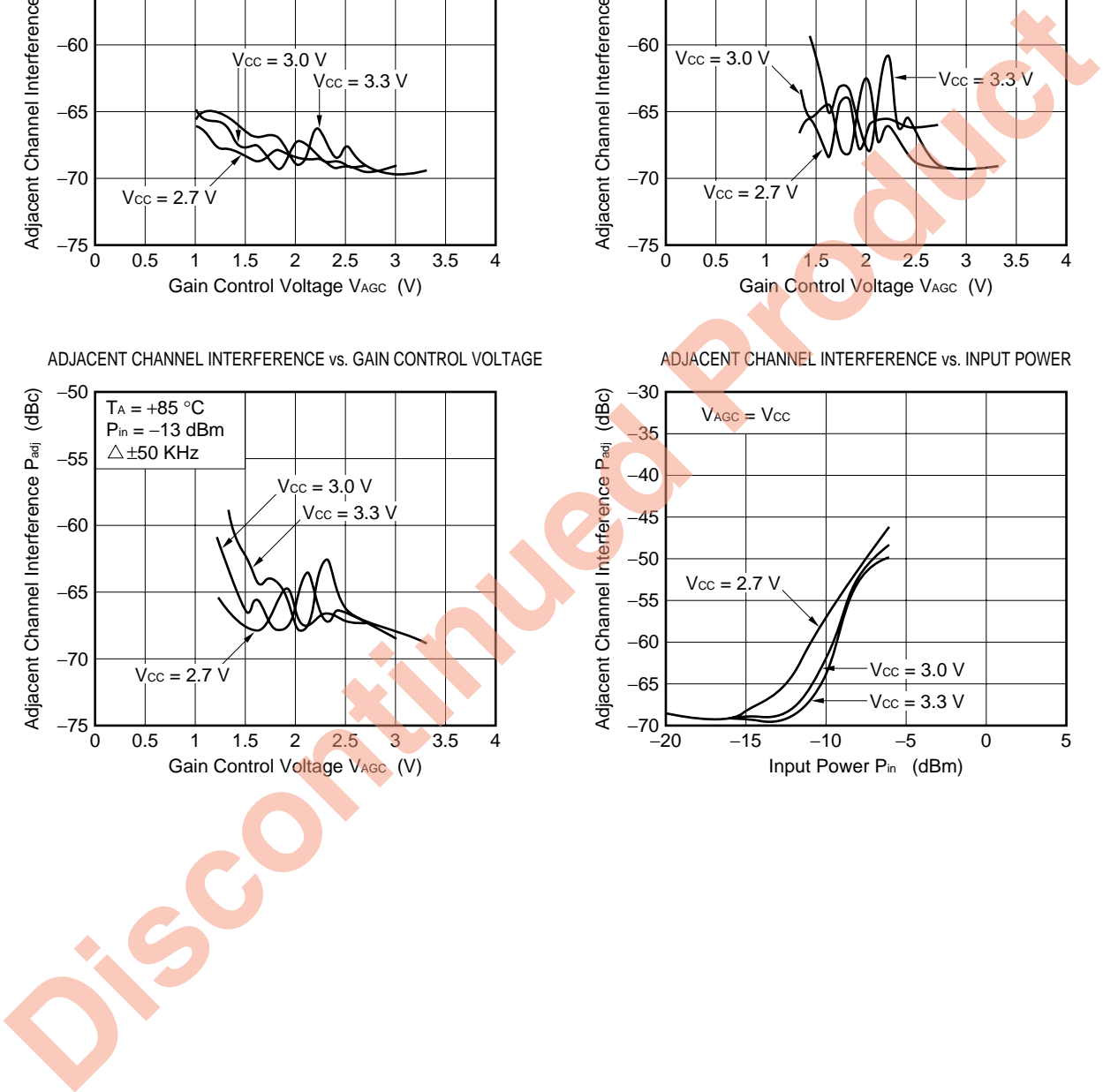
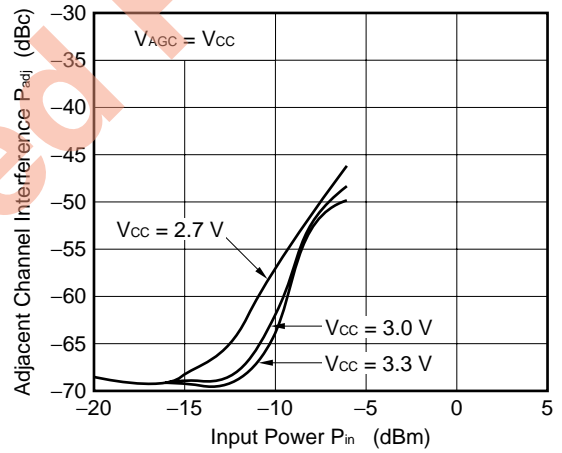
ADJACENT CHANNEL INTERFERENCE vs. GAIN CONTROL VOLTAGE



ADJACENT CHANNEL INTERFERENCE vs. GAIN CONTROL VOLTAGE



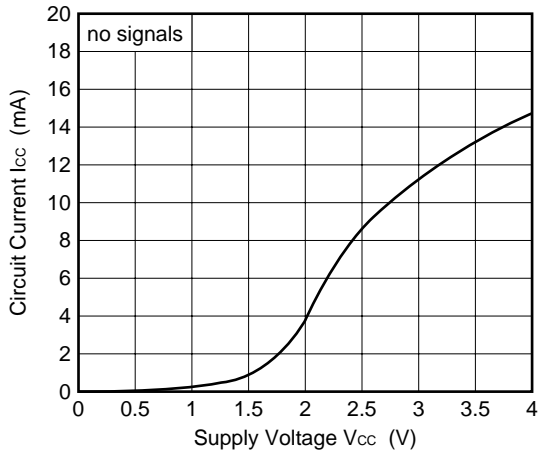
ADJACENT CHANNEL INTERFERENCE vs. INPUT POWER



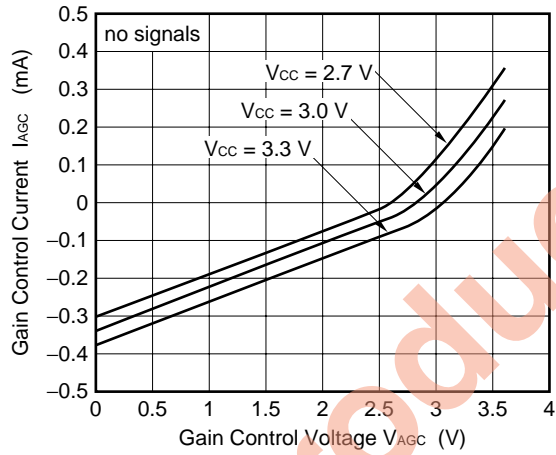
TYPICAL CHARACTERISTICS

μ PC8131TA

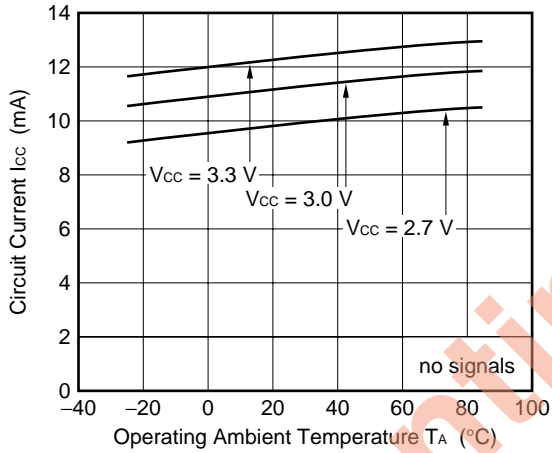
CIRCUIT CURRENT vs. SUPPLY VOLTAGE



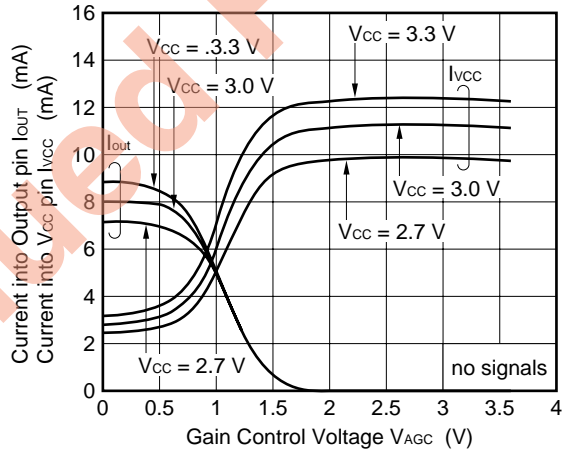
GAIN CONTROL CURRENT vs. GAIN CONTROL VOLTAGE



CIRCUIT CURRENT vs. OPERATING AMBIENT TEMPERATURE

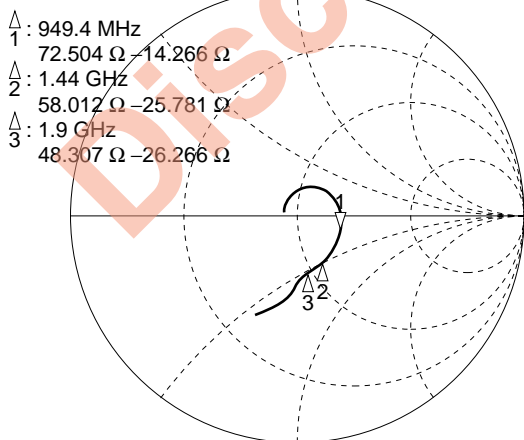


CURRENT INTO OUTPUT PIN AND CURRENT INTO Vcc PIN vs. GAIN CONTROL VOLTAGE



S11 vs. FREQUENCY

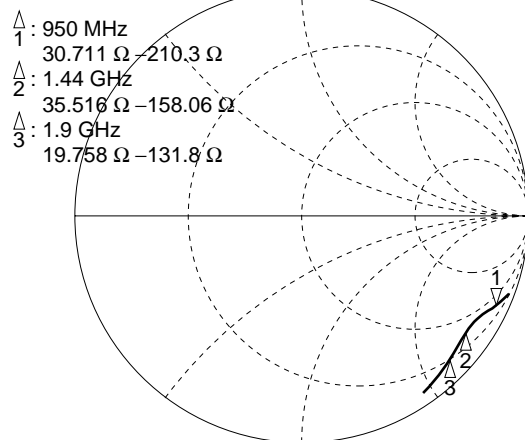
Vcc = 3.0 V, Vagc = 0 V (GpMAX), Pin = -20 dBm
S11



START 100.000 000 MHz STOP 3 100.000 000 MHz

S22 vs. FREQUENCY

Vcc = 3.0 V, Vagc = 0 V (GpMAX), Pin = -20 dBm
S22

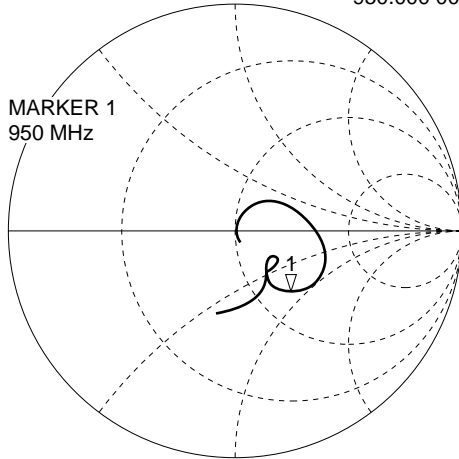


START 800.000 000 MHz STOP 2 700.000 000 MHz

μ PC8131TA

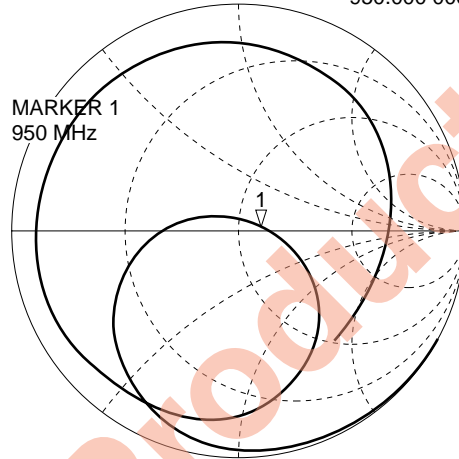
Output port matching at f = 950 MHz

$V_{CC} = 3.0\text{ V}$, $V_{AGC} = 0\text{ V}$ (G_PMAX), $P_{in} = -20\text{ dBm}$
 S_{11} vs. FREQUENCY 1: 66.246 Ω -41.039 Ω 4.0822 pF
 950.000 000 MHz



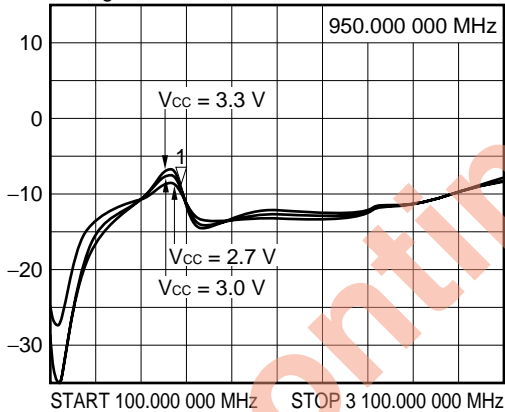
START 100.000 000 MHz STOP 3 100.000 000 MHz

$V_{CC} = 3.0\text{ V}$, $V_{AGC} = 0\text{ V}$ (G_PMAX), $P_{in} = -20\text{ dBm}$
 S_{22} vs. FREQUENCY 1: 57.439 Ω 3.3594 Ω 562.8 pF
 950.000 000 MHz



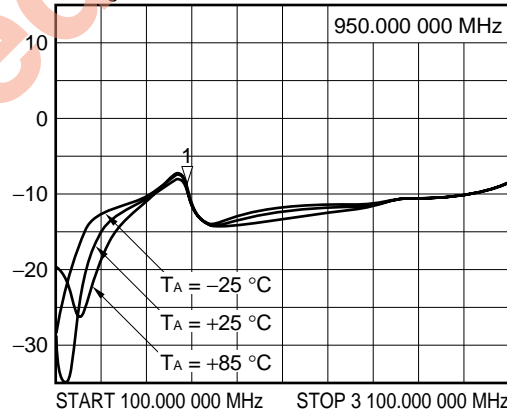
START 100.000 000 MHz STOP 3 100.000 000 MHz

S_{11} vs. FREQUENCY
 $V_{AGC} = 0\text{ V}$ (G_PMAX), $P_{in} = -20\text{ dBm}$
 S_{11} log MAG 5 dB/REF 0 dB 1: -8.9634 dB



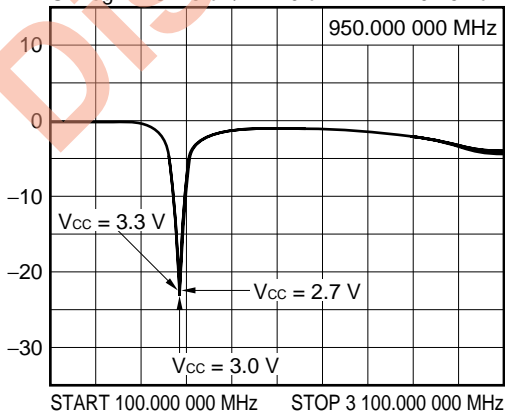
START 100.000 000 MHz STOP 3 100.000 000 MHz

S_{11} vs. FREQUENCY
 $V_{CC} = 3.0\text{ V}$, $V_{AGC} = 0\text{ V}$ (G_PMAX), $P_{in} = -20\text{ dBm}$
 S_{11} log MAG 5 dB/REF 0 dB 1: -2.0122 dB



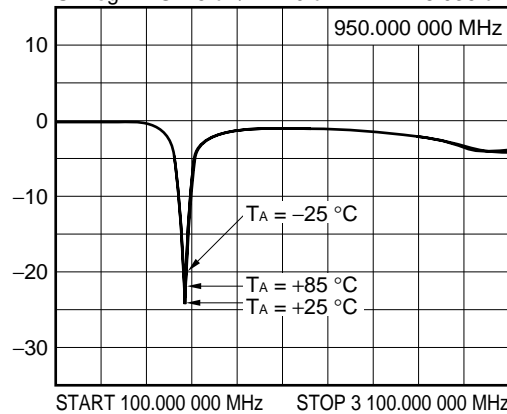
START 100.000 000 MHz STOP 3 100.000 000 MHz

S_{22} vs. FREQUENCY
 $V_{AGC} = 0\text{ V}$ (G_PMAX), $P_{in} = -20\text{ dBm}$
 S_{22} log MAG 5 dB/REF 0 dB 1: -19.264 dB



START 100.000 000 MHz STOP 3 100.000 000 MHz

S_{22} vs. FREQUENCY
 $V_{CC} = 3.0\text{ V}$, $V_{AGC} = 0\text{ V}$ (G_PMAX), $P_{in} = -20\text{ dBm}$
 S_{22} log MAG 5 dB/REF 0 dB 1: -18.936 dB



START 100.000 000 MHz STOP 3 100.000 000 MHz

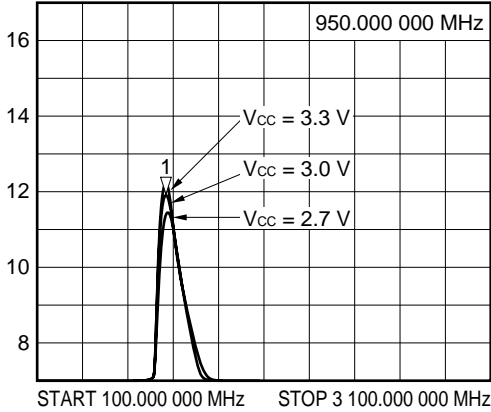
μ PC8131TA

Output port matching at f = 950 MHz

S₂₁ vs. FREQUENCY

V_{AGC} = 0 V (G_PMAX), P_{in} = -20 dBm

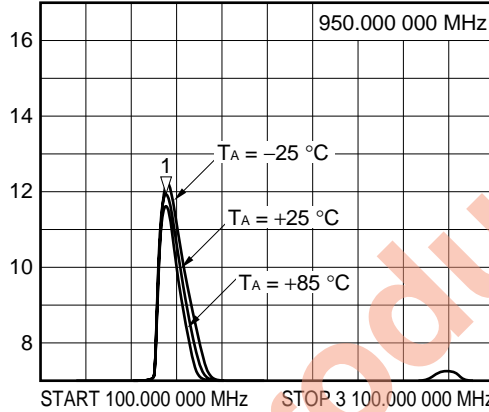
S₂₁ log MAG 1 dB/REF 7 dB 1: 11.909 dB



S₂₁ vs. FREQUENCY

V_{CC} = 3.0 V, V_{AGC} = 0 V (G_PMAX), P_{in} = -20 dBm

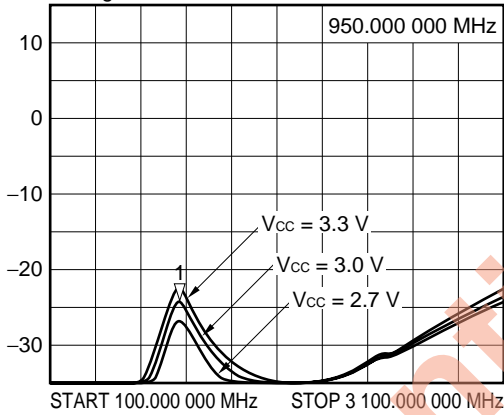
S₂₁ log MAG 1 dB/REF 7 dB 1: 11.894 dB



S₁₂ vs. FREQUENCY

V_{AGC} = 0 V (G_PMAX), P_{in} = -20 dBm

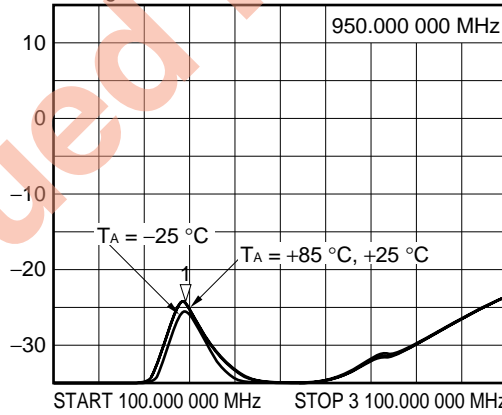
S₁₂ log MAG 5 dB/REF 0 dB 1: -24.468 dB



S₁₂ vs. FREQUENCY

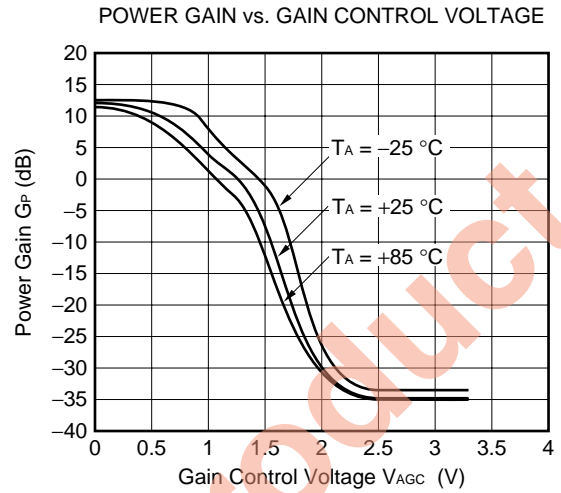
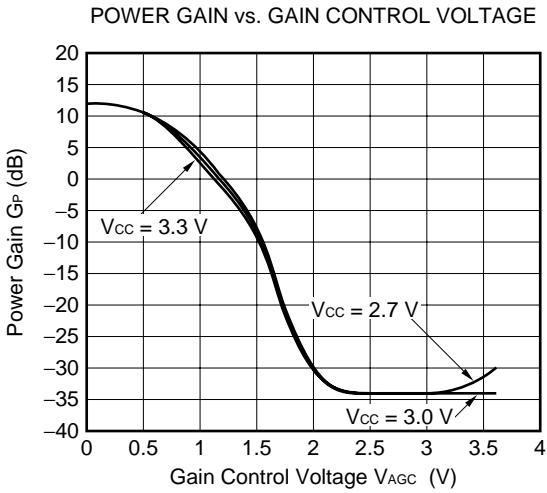
V_{CC} = 3.0 V, V_{AGC} = 0 V (G_PMAX), P_{in} = -20 dBm

S₁₂ log MAG 5 dB/REF 0 dB 1: -24.393 dB

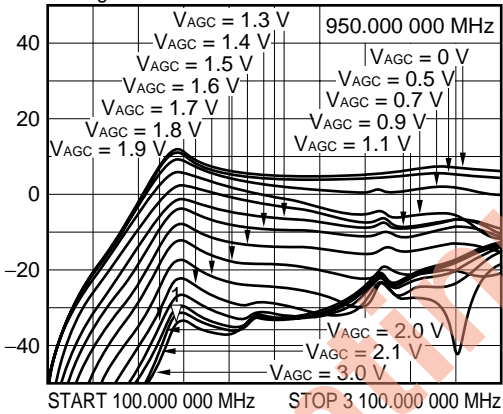


μ PC8131TA

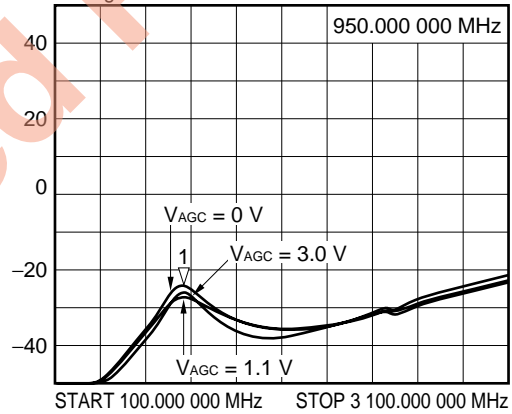
Output port matching at $f = 950$ MHz



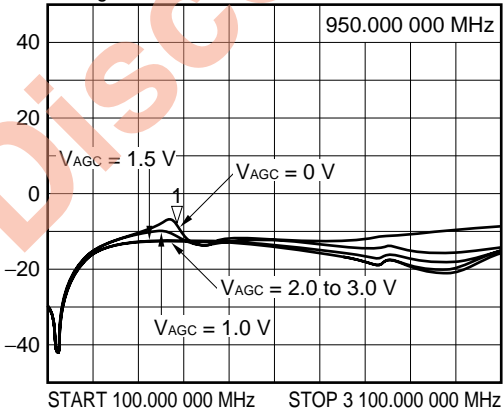
S_{21} vs. FREQUENCY DEPENDENCE OF GAIN CONTROL VOLTAGE
 $V_{CC} = 3.0$ V, $P_{in} = -20$ dBm
 S_{21} log MAG 10 dB/REF 0 dB 1: -34.406 dB



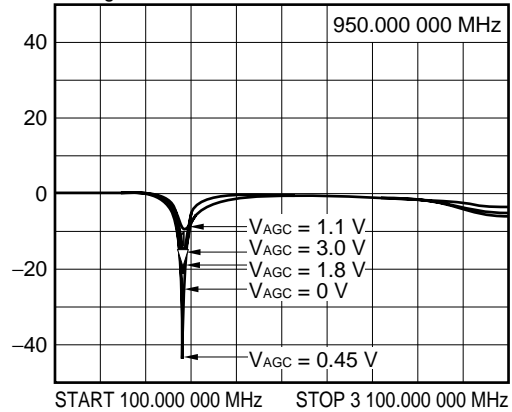
S_{12} vs. FREQUENCY DEPENDENCE OF GAIN CONTROL VOLTAGE
 $V_{CC} = 3.0$ V, $P_{in} = -20$ dBm
 S_{12} log MAG 10 dB/REF 0 dB 1: -24.537 dB



S_{11} vs. FREQUENCY DEPENDENCE OF GAIN CONTROL VOLTAGE
 $V_{CC} = 3.0$ V, $P_{in} = -20$ dBm
 S_{11} log MAG 10 dB/REF 0 dB 1: -8.9126 dB

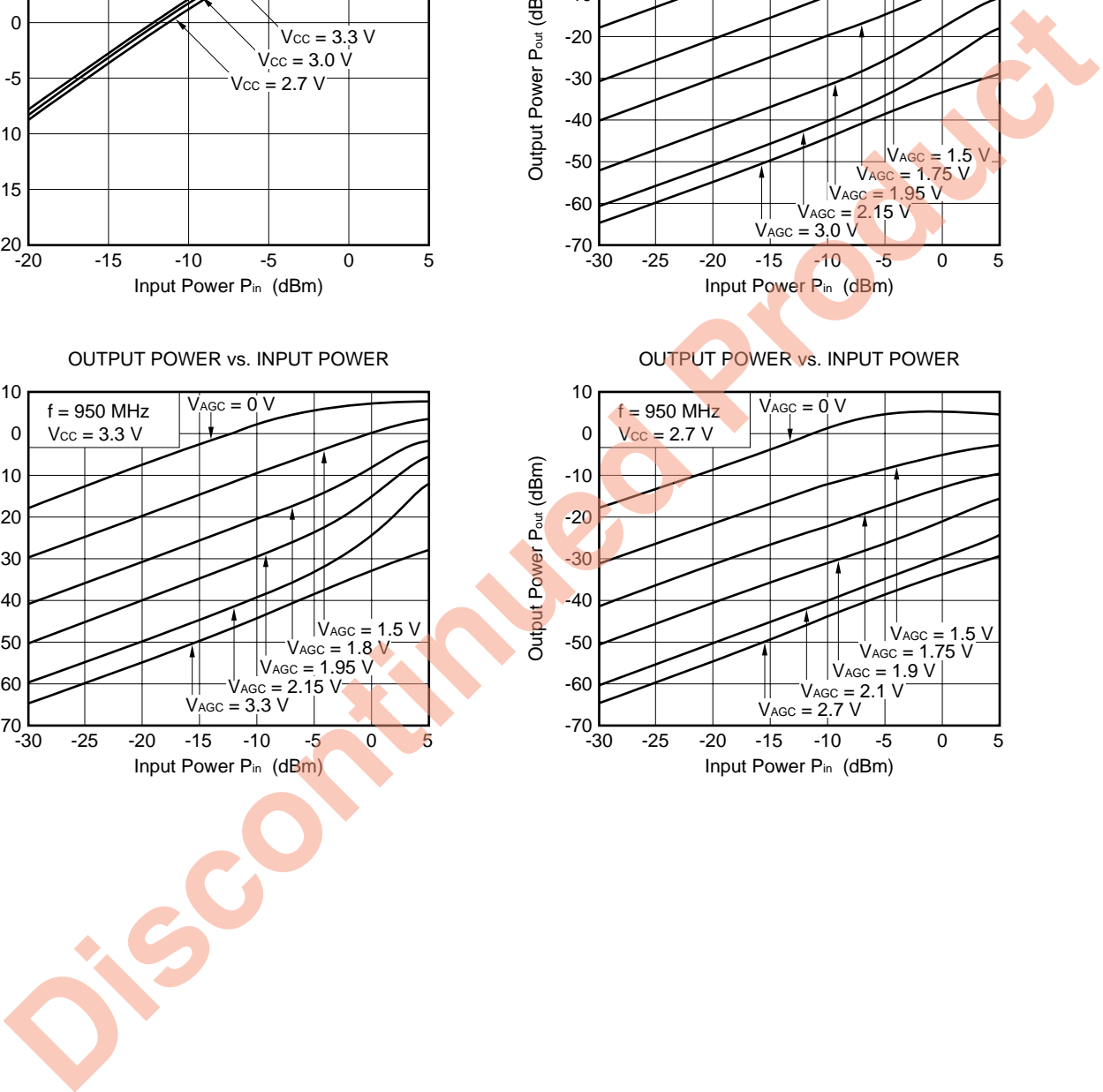
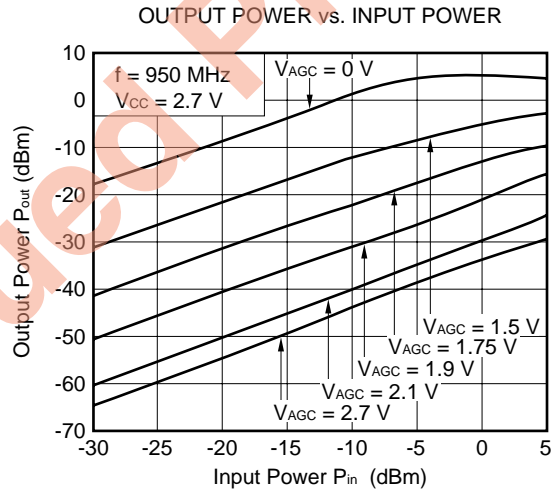
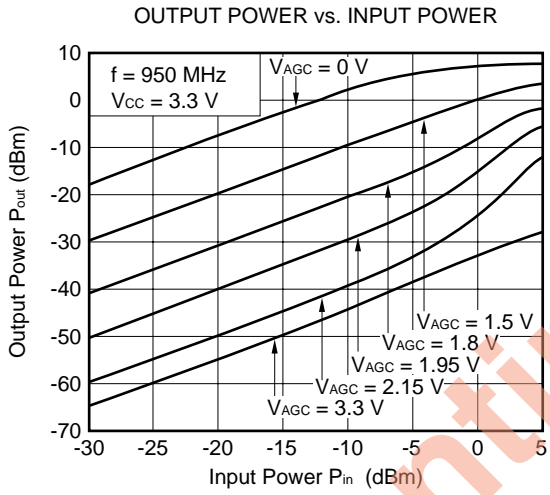
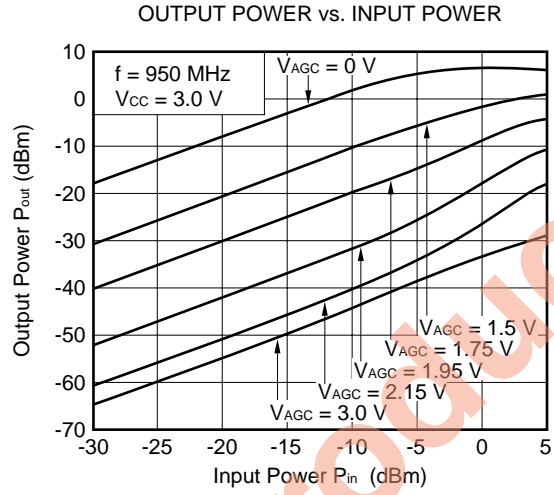
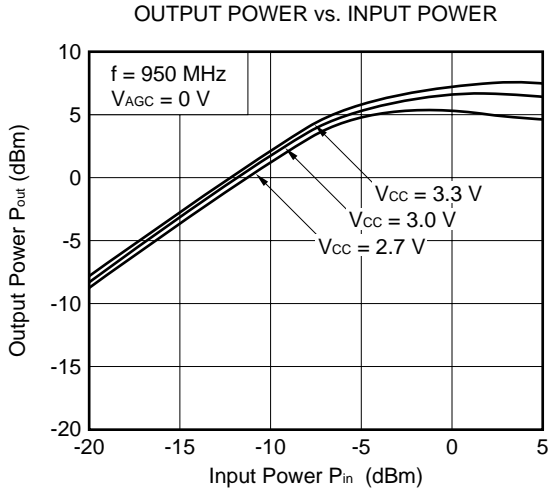


S_{22} vs. FREQUENCY DEPENDENCE OF GAIN CONTROL VOLTAGE
 $V_{CC} = 3.0$ V, $P_{in} = -20$ dBm
 S_{22} log MAG 10 dB/REF 0 dB 1: -19.505 dB



μ PC8131TA

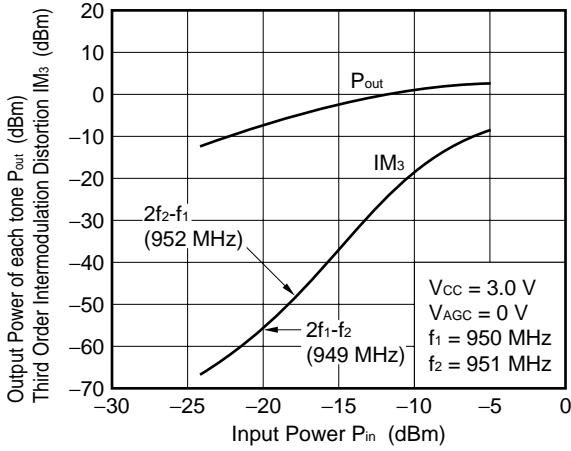
Output port matching at $f = 950$ MHz



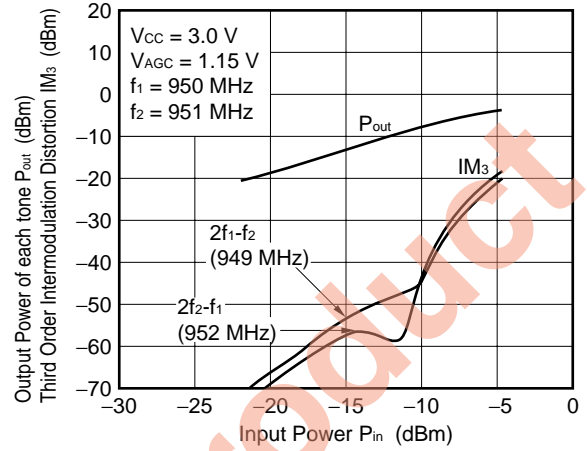
μ PC8131TA

Output port matching at $f = 950$ MHz

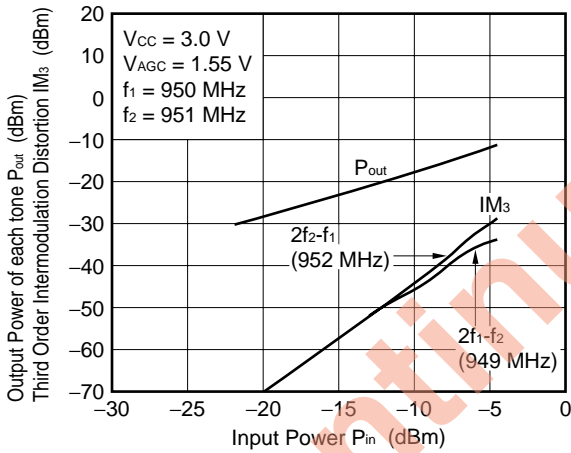
OUTPUT POWER AND IM₃ vs. INPUT POWER



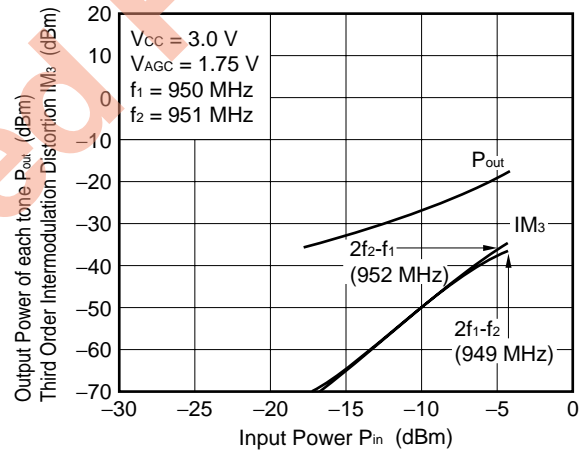
OUTPUT POWER AND IM₃ vs. INPUT POWER



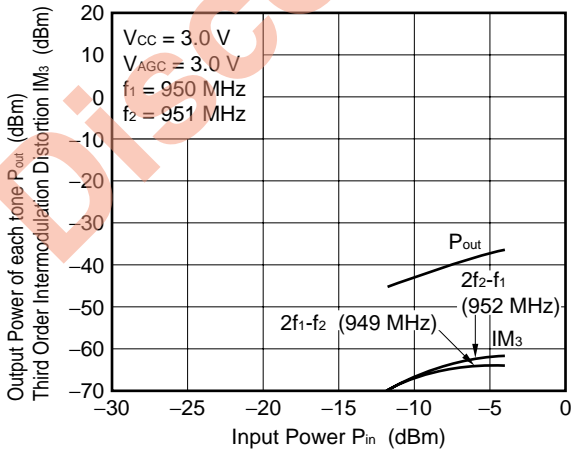
OUTPUT POWER AND IM₃ vs. INPUT POWER



OUTPUT POWER AND IM₃ vs. INPUT POWER



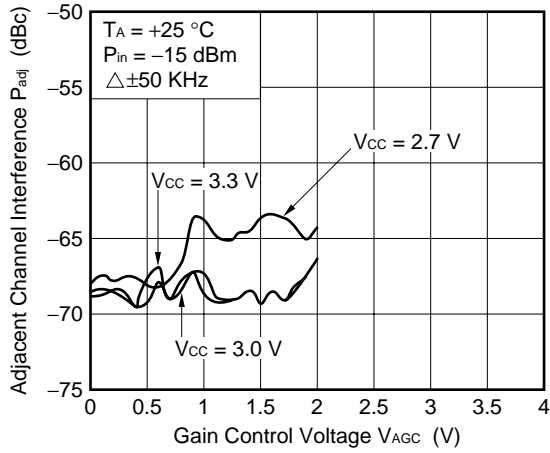
OUTPUT POWER AND IM₃ vs. INPUT POWER



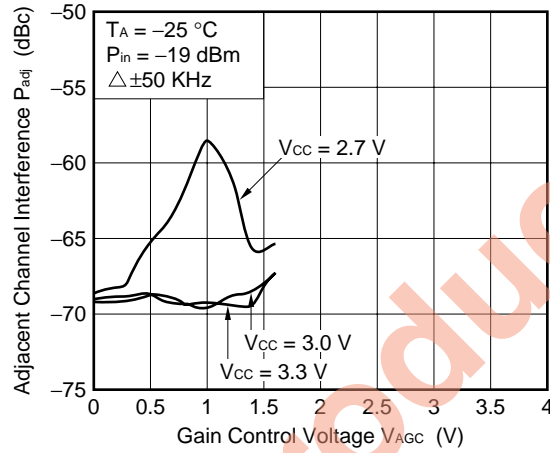
μ PC8131TA

Output port matching at f = 950 MHz

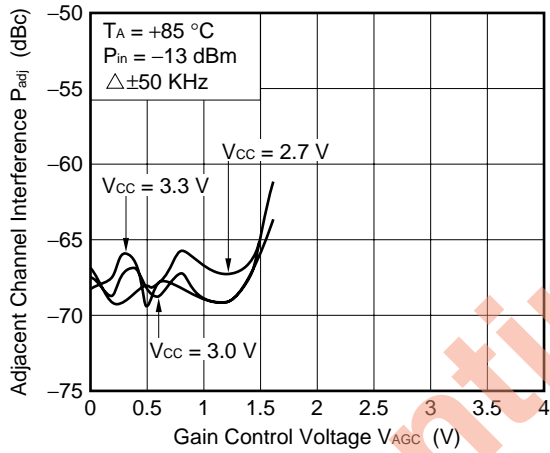
ADJACENT CHANNEL INTERFERENCE vs. GAIN CONTROL VOLTAGE



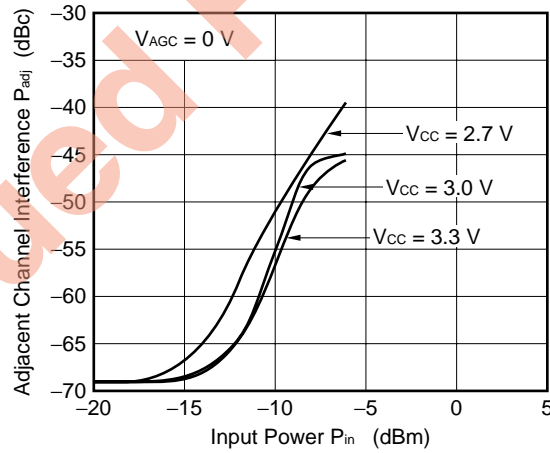
ADJACENT CHANNEL INTERFERENCE vs. GAIN CONTROL VOLTAGE



ADJACENT CHANNEL INTERFERENCE vs. GAIN CONTROL VOLTAGE



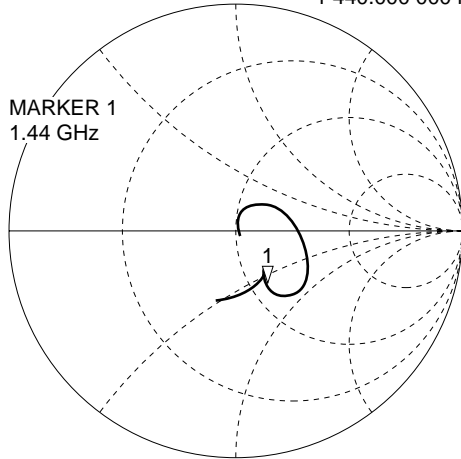
ADJACENT CHANNEL INTERFERENCE vs. INPUT POWER



μ PC8131TA

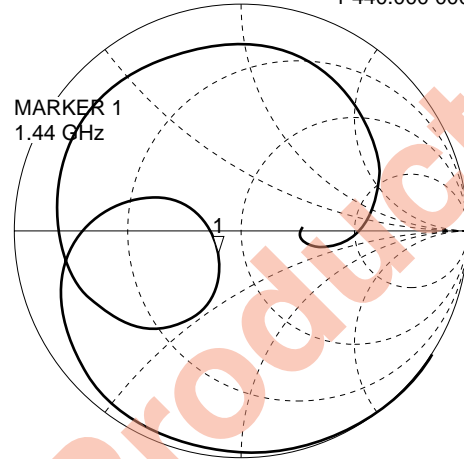
Output port matching at f = 1440 MHz

$V_{CC} = 3.0\text{ V}$, $V_{AGC} = 0\text{ V}$ (G_PMAX), $P_{in} = -20\text{ dBm}$
 S_{11} vs. FREQUENCY 1: 57.025 Ω -32.578 Ω 3.3926 pF
 1 440.000 000 MHz



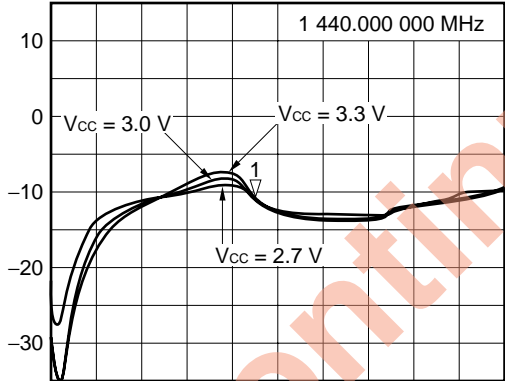
START 100.000 000 MHz STOP 3 100.000 000 MHz

$V_{CC} = 3.0\text{ V}$, $V_{AGC} = 0\text{ V}$ (G_PMAX), $P_{in} = -20\text{ dBm}$
 S_{22} vs. FREQUENCY 1: 40.016 Ω -8.582 Ω 12.879 pF
 1 440.000 000 MHz



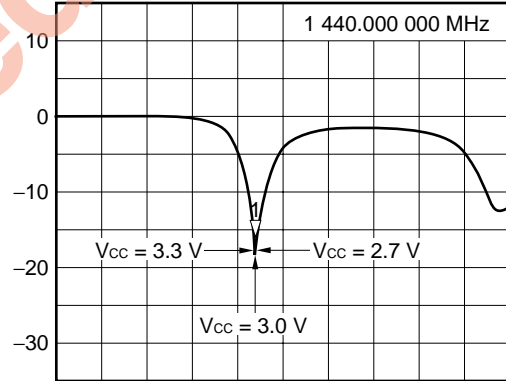
START 100.000 000 MHz STOP 3 100.000 000 MHz

S_{11} vs. FREQUENCY
 $V_{AGC} = 0\text{ V}$ (G_PMAX), $P_{in} = -20\text{ dBm}$
 S_{11} log MAG 5 dB/REF 0 dB 1: -10.576 dB



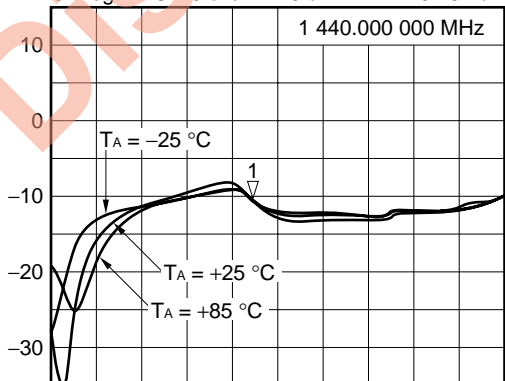
START 100.000 000 MHz STOP 3 100.000 000 MHz

S_{22} vs. FREQUENCY
 $V_{AGC} = 0\text{ V}$ (G_PMAX), $P_{in} = -20\text{ dBm}$
 S_{22} log MAG 5 dB/REF 0 dB 1: -15.766 dB



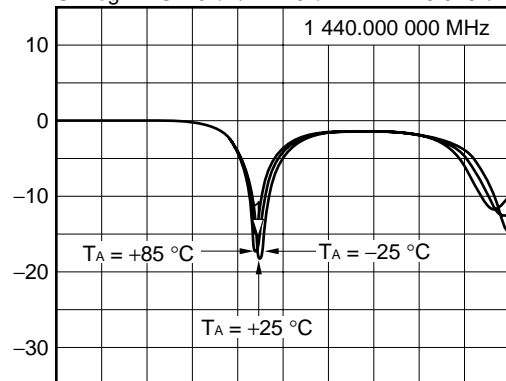
START 100.000 000 MHz STOP 3 100.000 000 MHz

S_{11} vs. FREQUENCY
 $V_{CC} = 3.0\text{ V}$, $V_{AGC} = 0\text{ V}$ (G_PMAX), $P_{in} = -20\text{ dBm}$
 S_{11} log MAG 5 dB/REF 0 dB 1: -10.784 dB



START 100.000 000 MHz STOP 3 100.000 000 MHz

S_{22} vs. FREQUENCY
 $V_{CC} = 3.0\text{ V}$, $V_{AGC} = 0\text{ V}$ (G_PMAX), $P_{in} = -20\text{ dBm}$
 S_{22} log MAG 5 dB/REF 0 dB 1: -15.915 dB



START 100.000 000 MHz STOP 3 100.000 000 MHz

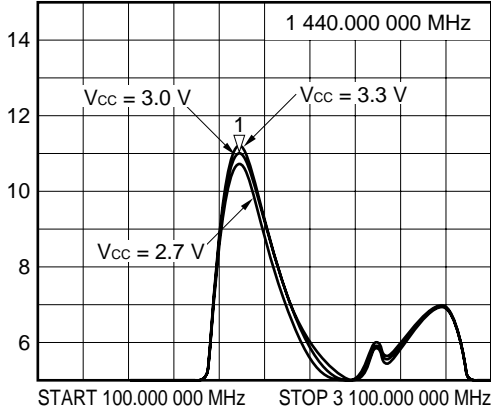
μ PC8131TA

Output port matching at $f = 1440$ MHz

S₂₁ vs. FREQUENCY

V_{AGC} = 0 V (G_PMAX), P_{in} = -20 dBm

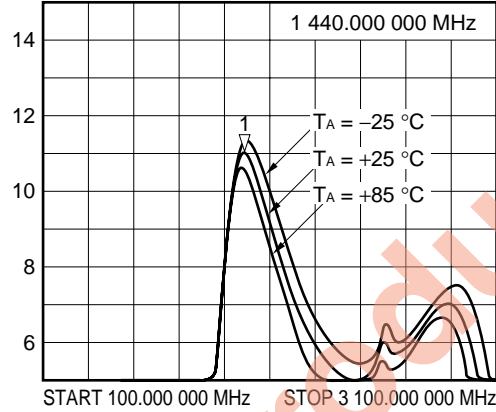
S₂₁ log MAG 1 dB/REF 5 dB 1: 10.951 dB



S₂₁ vs. FREQUENCY

V_{CC} = 3.0 V, V_{AGC} = 0 V (G_PMAX), P_{in} = -20 dBm

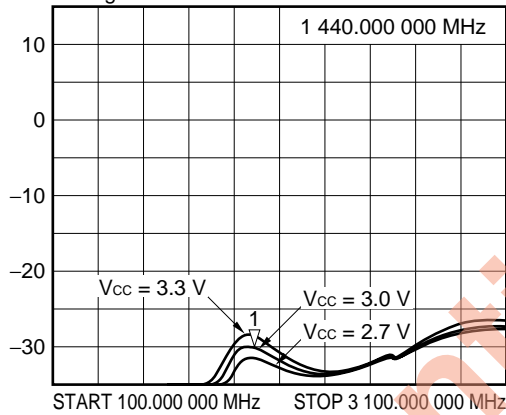
S₂₁ log MAG 1 dB/REF 5 dB 1: 10.957 dB



S₁₂ vs. FREQUENCY

V_{AGC} = 0 V (G_PMAX), P_{in} = -20 dBm

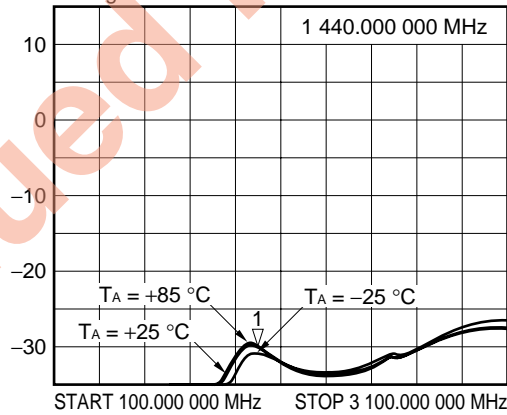
S₁₂ log MAG 5 dB/REF 0 dB 1: -29.767 dB



S₁₂ vs. FREQUENCY

V_{CC} = 3.0 V, V_{AGC} = 0 V (G_PMAX), P_{in} = -20 dBm

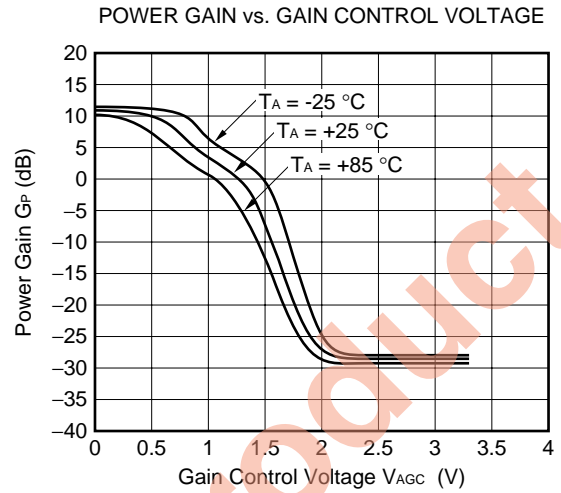
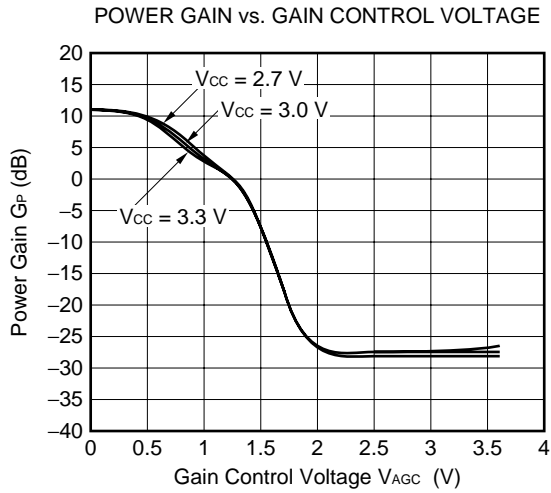
S₁₂ log MAG 5 dB/REF 0 dB 1: -30.004 dB



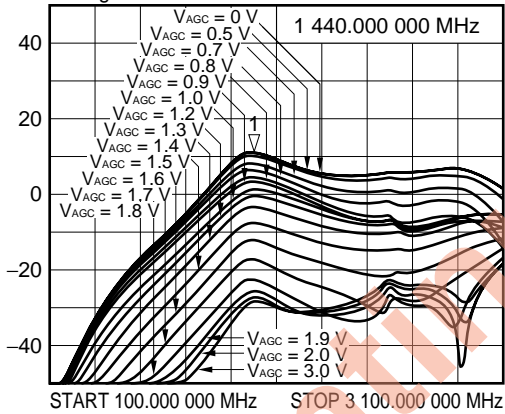
Discontinued Product

μ PC8131TA

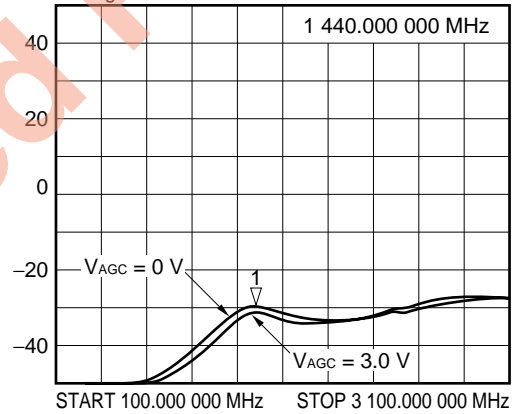
Output port matching at $f = 1440$ MHz



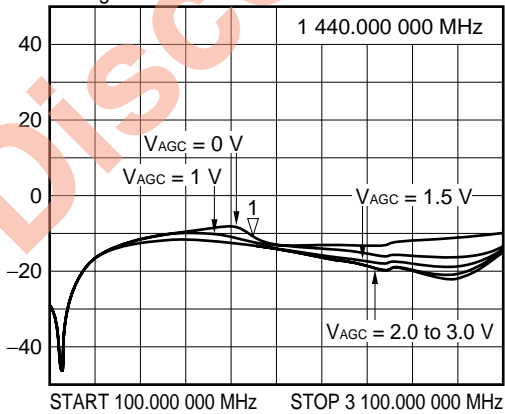
S_{21} vs. FREQUENCY DEPENDENCE OF GAIN CONTROL VOLTAGE
 $V_{CC} = 3.0$ V, $P_{in} = -20$ dBm
 S_{21} log MAG 10 dB/REF 0 dB 1: 10.967 dB



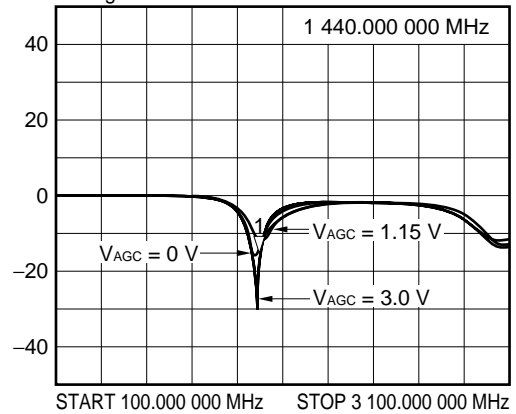
S_{12} vs. FREQUENCY DEPENDENCE OF GAIN CONTROL VOLTAGE
 $V_{CC} = 3.0$ V, $P_{in} = -20$ dBm
 S_{12} log MAG 10 dB/REF 0 dB 1: -29.705 dB



S_{11} vs. FREQUENCY DEPENDENCE OF GAIN CONTROL VOLTAGE
 $V_{CC} = 3.0$ V, $P_{in} = -20$ dBm
 S_{11} log MAG 10 dB/REF 0 dB 1: -10.499 dB

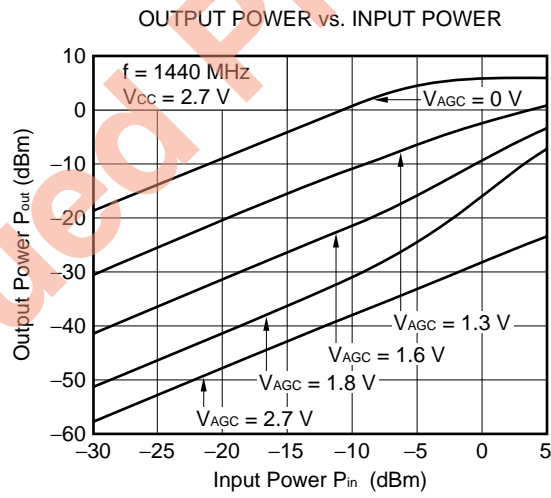
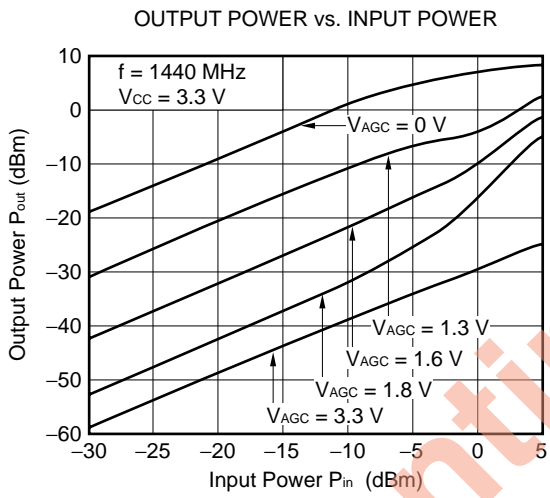
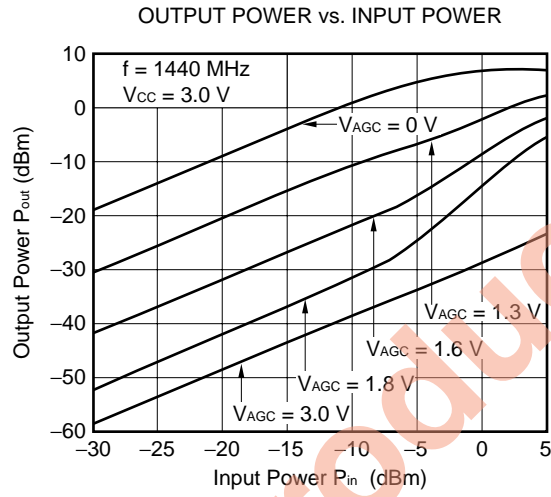
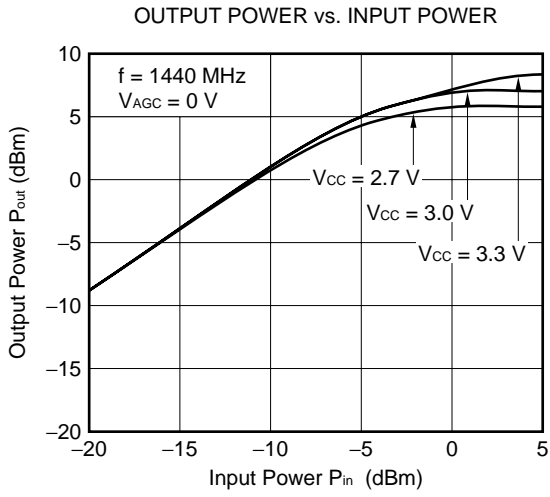


S_{22} vs. FREQUENCY DEPENDENCE OF GAIN CONTROL VOLTAGE
 $V_{CC} = 3.0$ V, $P_{in} = -20$ dBm
 S_{22} log MAG 10 dB/REF 0 dB 1: -14.578 dB



μ PC8131TA

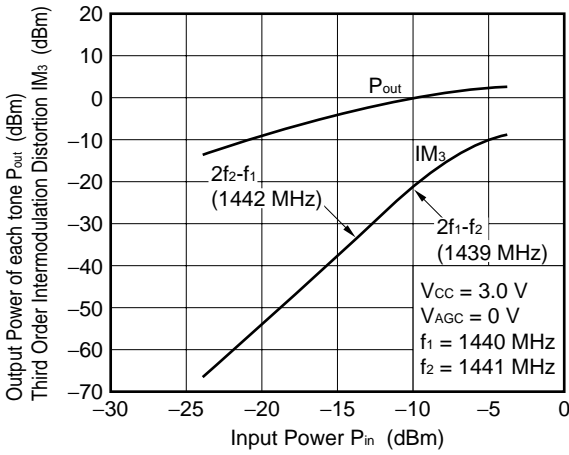
Output port matching at $f = 1440$ MHz



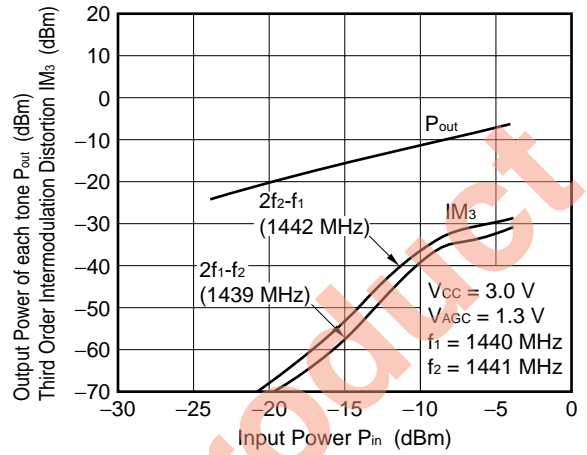
μ PC8131TA

Output port matching at f = 1440 MHz

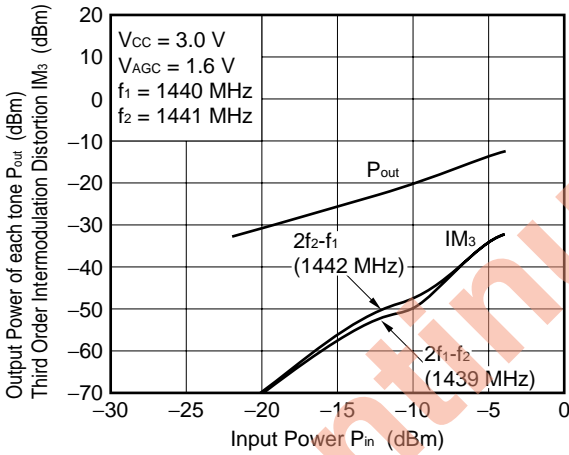
OUTPUT POWER AND IM₃ vs. INPUT POWER



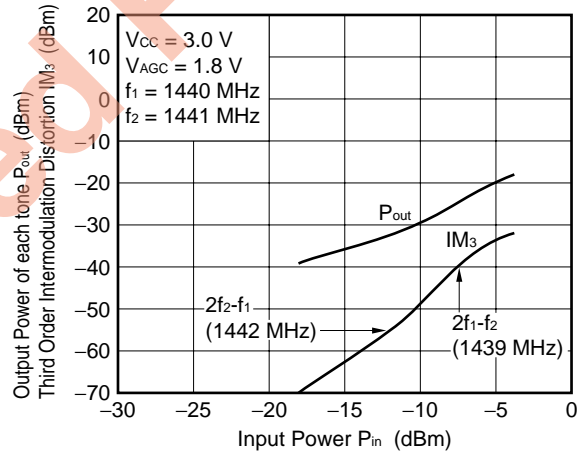
OUTPUT POWER AND IM₃ vs. INPUT POWER



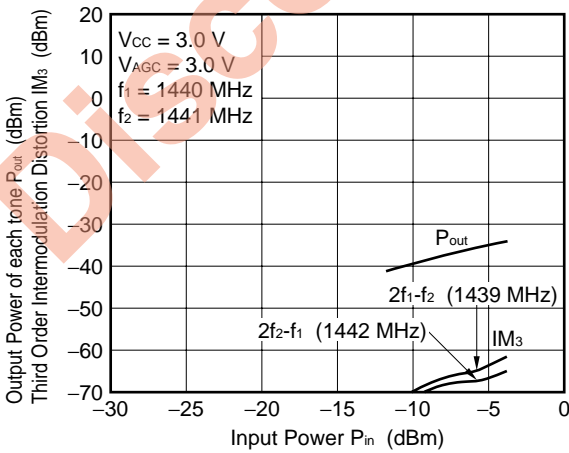
OUTPUT POWER AND IM₃ vs. INPUT POWER



OUTPUT POWER AND IM₃ vs. INPUT POWER



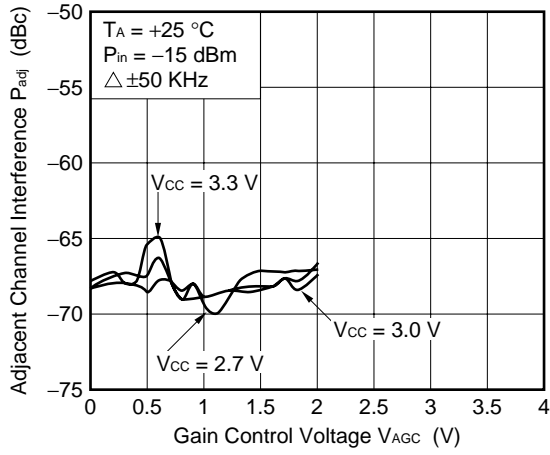
OUTPUT POWER AND IM₃ vs. INPUT POWER



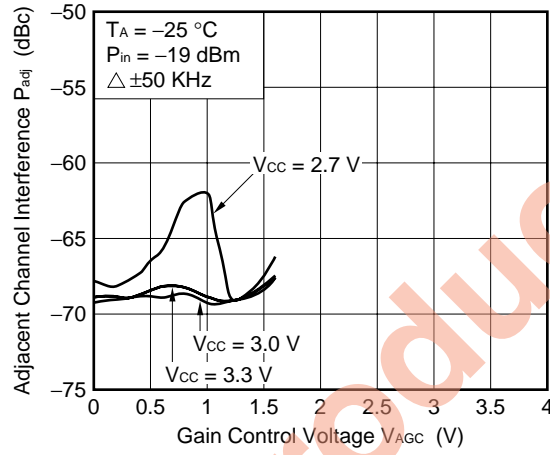
μ PC8131TA

Output port matching at f = 1440 MHz

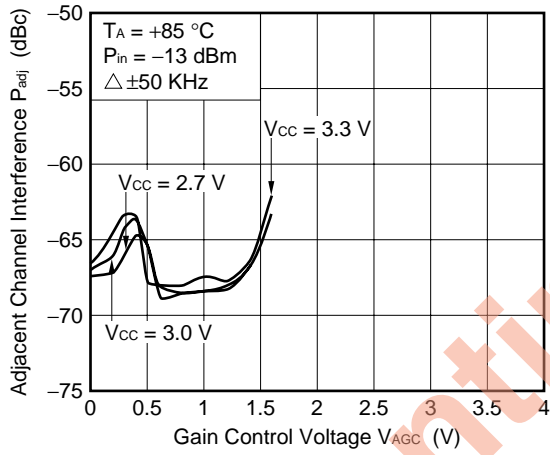
ADJACENT CHANNEL INTERFERENCE vs. GAIN CONTROL VOLTAGE



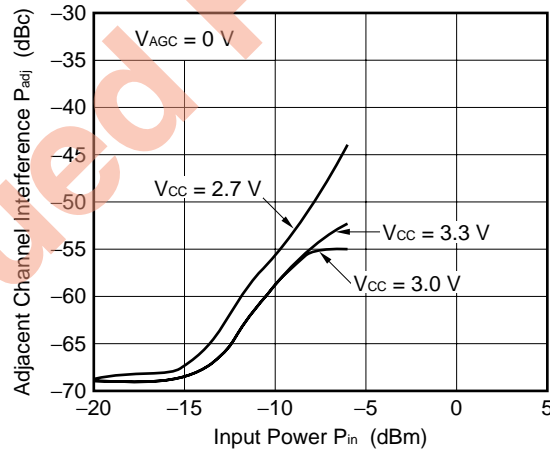
ADJACENT CHANNEL INTERFERENCE vs. GAIN CONTROL VOLTAGE



ADJACENT CHANNEL INTERFERENCE vs. GAIN CONTROL VOLTAGE

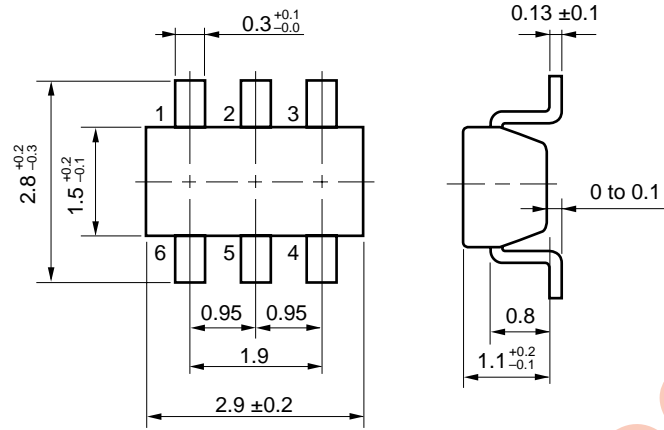


ADJACENT CHANNEL INTERFERENCE vs. INPUT POWER



PACKAGE DIMENSIONS

6 PIN MINI-MOLD PACKAGE (UNIT: mm)



Discontinued Product

NOTES ON CORRECT USE

- (1) Observe precautions for handling because of electro-static sensitive devices.
- (2) Form a ground pattern as wide as possible to minimize ground impedance (to prevent undesired oscillation). All the ground pins must be connected together with wide ground pattern to decrease impedance difference.
- (3) The bypass capacitor (eg. 1000 pF) should be attached to the Vcc pin.
- (4) Impedance matching circuit must be each externally attached to input and output ports.
- (5) The bias must be applied to output pin through the matching inductor. (The bias must not be applied to input pin.)

RECOMMENDED SOLDERING CONDITIONS

This product should be soldered under the following recommended conditions. For soldering methods and conditions other than those recommended below, contact your NEC sales representative.

Soldering Method	Soldering Conditions	Recommended Condition Symbol
Infrared Reflow	Package peak temperature: 235 °C or below Time: 30 seconds or less (at 210 °C) Count: 3, Exposure limit ^{Note} : None	IR35-00-3
VPS	Package peak temperature: 215 °C or below Time: 40 seconds or less (at 200 °C) Count: 3, Exposure limit ^{Note} : None	VP15-00-3
Wave Soldering	Soldering bath temperature: 260 °C or below Time: 10 seconds or less Count: 1, Exposure limit ^{Note} : None	WS60-00-1
Partial Heating	Pin temperature: 300 °C Time: 3 seconds or less (per side of device) Exposure limit ^{Note} : None	-

Note After opening the dry pack, keep it in a place below 25 °C and 65 % RH for the allowable storage period.

Caution Do not use different soldering methods together (except for partial heating).

For details of recommended soldering conditions for surface mounting, refer to information document SEMICONDUCTOR DEVICE MOUNTING TECHNOLOGY MANUAL (C10535E).

[MEMO]

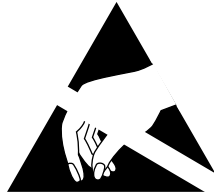
Discontinued Product

[MEMO]

Discontinued Product

[MEMO]

Discontinued Product



ATTENTION

OBSERVE PRECAUTIONS
FOR HANDLING
ELECTROSTATIC
SENSITIVE
DEVICES

NESAT (NEC Silicon Advanced Technology) is a trademark of NEC Corporation.

No part of this document may be copied or reproduced in any form or by any means without the prior written consent of NEC Corporation. NEC Corporation assumes no responsibility for any errors which may appear in this document.

NEC Corporation does not assume any liability for infringement of patents, copyrights or other intellectual property rights of third parties by or arising from use of a device described herein or any other liability arising from use of such device. No license, either express, implied or otherwise, is granted under any patents, copyrights or other intellectual property rights of NEC Corporation or others.

While NEC Corporation has been making continuous effort to enhance the reliability of its semiconductor devices, the possibility of defects cannot be eliminated entirely. To minimize risks of damage or injury to persons or property arising from a defect in an NEC semiconductor device, customers must incorporate sufficient safety measures in its design, such as redundancy, fire-containment, and anti-failure features.

NEC devices are classified into the following three quality grades:

"Standard", "Special", and "Specific". The Specific quality grade applies only to devices developed based on a customer designated "quality assurance program" for a specific application. The recommended applications of a device depend on its quality grade, as indicated below. Customers must check the quality grade of each device before using it in a particular application.

Standard: Computers, office equipment, communications equipment, test and measurement equipment, audio and visual equipment, home electronic appliances, machine tools, personal electronic equipment and industrial robots

Special: Transportation equipment (automobiles, trains, ships, etc.), traffic control systems, anti-disaster systems, anti-crime systems, safety equipment and medical equipment (not specifically designed for life support)

Specific: Aircrafts, aerospace equipment, submersible repeaters, nuclear reactor control systems, life support systems or medical equipment for life support, etc.

The quality grade of NEC devices is "Standard" unless otherwise specified in NEC's Data Sheets or Data Books. If customers intend to use NEC devices for applications other than those specified for Standard quality grade, they should contact an NEC sales representative in advance.

Anti-radioactive design is not implemented in this product.