

To our customers,

Old Company Name in Catalogs and Other Documents

On April 1st, 2010, NEC Electronics Corporation merged with Renesas Technology Corporation, and Renesas Electronics Corporation took over all the business of both companies. Therefore, although the old company name remains in this document, it is a valid Renesas Electronics document. We appreciate your understanding.

Renesas Electronics website: <http://www.renesas.com>

April 1st, 2010
Renesas Electronics Corporation

Issued by: Renesas Electronics Corporation (<http://www.renesas.com>)

Send any inquiries to <http://www.renesas.com/inquiry>.

Notice

1. All information included in this document is current as of the date this document is issued. Such information, however, is subject to change without any prior notice. Before purchasing or using any Renesas Electronics products listed herein, please confirm the latest product information with a Renesas Electronics sales office. Also, please pay regular and careful attention to additional and different information to be disclosed by Renesas Electronics such as that disclosed through our website.
2. Renesas Electronics does not assume any liability for infringement of patents, copyrights, or other intellectual property rights of third parties by or arising from the use of Renesas Electronics products or technical information described in this document. No license, express, implied or otherwise, is granted hereby under any patents, copyrights or other intellectual property rights of Renesas Electronics or others.
3. You should not alter, modify, copy, or otherwise misappropriate any Renesas Electronics product, whether in whole or in part.
4. Descriptions of circuits, software and other related information in this document are provided only to illustrate the operation of semiconductor products and application examples. You are fully responsible for the incorporation of these circuits, software, and information in the design of your equipment. Renesas Electronics assumes no responsibility for any losses incurred by you or third parties arising from the use of these circuits, software, or information.
5. When exporting the products or technology described in this document, you should comply with the applicable export control laws and regulations and follow the procedures required by such laws and regulations. You should not use Renesas Electronics products or the technology described in this document for any purpose relating to military applications or use by the military, including but not limited to the development of weapons of mass destruction. Renesas Electronics products and technology may not be used for or incorporated into any products or systems whose manufacture, use, or sale is prohibited under any applicable domestic or foreign laws or regulations.
6. Renesas Electronics has used reasonable care in preparing the information included in this document, but Renesas Electronics does not warrant that such information is error free. Renesas Electronics assumes no liability whatsoever for any damages incurred by you resulting from errors in or omissions from the information included herein.
7. Renesas Electronics products are classified according to the following three quality grades: “Standard”, “High Quality”, and “Specific”. The recommended applications for each Renesas Electronics product depends on the product’s quality grade, as indicated below. You must check the quality grade of each Renesas Electronics product before using it in a particular application. You may not use any Renesas Electronics product for any application categorized as “Specific” without the prior written consent of Renesas Electronics. Further, you may not use any Renesas Electronics product for any application for which it is not intended without the prior written consent of Renesas Electronics. Renesas Electronics shall not be in any way liable for any damages or losses incurred by you or third parties arising from the use of any Renesas Electronics product for an application categorized as “Specific” or for which the product is not intended where you have failed to obtain the prior written consent of Renesas Electronics. The quality grade of each Renesas Electronics product is “Standard” unless otherwise expressly specified in a Renesas Electronics data sheets or data books, etc.
 - “Standard”: Computers; office equipment; communications equipment; test and measurement equipment; audio and visual equipment; home electronic appliances; machine tools; personal electronic equipment; and industrial robots.
 - “High Quality”: Transportation equipment (automobiles, trains, ships, etc.); traffic control systems; anti-disaster systems; anti-crime systems; safety equipment; and medical equipment not specifically designed for life support.
 - “Specific”: Aircraft; aerospace equipment; submersible repeaters; nuclear reactor control systems; medical equipment or systems for life support (e.g. artificial life support devices or systems), surgical implantations, or healthcare intervention (e.g. excision, etc.), and any other applications or purposes that pose a direct threat to human life.
8. You should use the Renesas Electronics products described in this document within the range specified by Renesas Electronics, especially with respect to the maximum rating, operating supply voltage range, movement power voltage range, heat radiation characteristics, installation and other product characteristics. Renesas Electronics shall have no liability for malfunctions or damages arising out of the use of Renesas Electronics products beyond such specified ranges.
9. Although Renesas Electronics endeavors to improve the quality and reliability of its products, semiconductor products have specific characteristics such as the occurrence of failure at a certain rate and malfunctions under certain use conditions. Further, Renesas Electronics products are not subject to radiation resistance design. Please be sure to implement safety measures to guard them against the possibility of physical injury, and injury or damage caused by fire in the event of the failure of a Renesas Electronics product, such as safety design for hardware and software including but not limited to redundancy, fire control and malfunction prevention, appropriate treatment for aging degradation or any other appropriate measures. Because the evaluation of microcomputer software alone is very difficult, please evaluate the safety of the final products or system manufactured by you.
10. Please contact a Renesas Electronics sales office for details as to environmental matters such as the environmental compatibility of each Renesas Electronics product. Please use Renesas Electronics products in compliance with all applicable laws and regulations that regulate the inclusion or use of controlled substances, including without limitation, the EU RoHS Directive. Renesas Electronics assumes no liability for damages or losses occurring as a result of your noncompliance with applicable laws and regulations.
11. This document may not be reproduced or duplicated, in any form, in whole or in part, without prior written consent of Renesas Electronics.
12. Please contact a Renesas Electronics sales office if you have any questions regarding the information contained in this document or Renesas Electronics products, or if you have any other inquiries.

(Note 1) “Renesas Electronics” as used in this document means Renesas Electronics Corporation and also includes its majority-owned subsidiaries.

(Note 2) “Renesas Electronics product(s)” means any product developed or manufactured by or for Renesas Electronics.

Phase-out/Discontinued

LOW-SATURATED STABILIZED POWER SUPPLY WITH SYSTEM RESET PIN

DESCRIPTION

The μPC2250 series is a collection of low-saturated 4-pin stabilized power supplies with a pin that outputs a reset signal when a drop in the input voltage is detected.

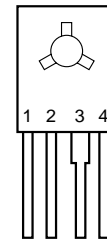
Because the reverse leakage current of these power supplies is about 1 μA even if a voltage is applied to the output pin when the input voltage is cut off, these power supplies are ideal for systems with on-board microprocessors requiring battery backup.

FEATURES

- Low minimum voltage difference between input and output
 $V_{DIF} = 0.15 \text{ V TYP. (at } I_o = 40 \text{ mA)}$
- Outputs reset signal (active-low) when the input voltage or output voltage drops.
- Low reverse leakage current during back up
 $I_{OLK} = 1 \text{ } \mu\text{A TYP.}$
- Low circuit operating current under no load
 $I_{BIAS} = 1.3 \text{ mA TYP.}$

PIN CONFIGURATION (Marking Side)

4-pin plastic SIP (TO-126)
 μPC2251H, 2253H, 2255H

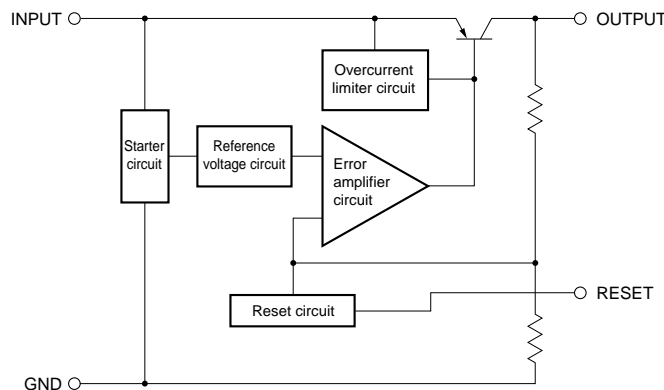


- 1: INPUT
- 2: RESET
- 3: GND
- 4: OUTPUT

ORDERING INFORMATION

Part Number	Package	Output Voltage
μPC2251H	4-pin plastic SIP (TO-126)	3 V
μPC2253H	4-pin plastic SIP (TO-126)	5 V (TYPE1)
μPC2255H	4-pin plastic SIP (TO-126)	5 V (TYPE2)

BLOCK DIAGRAM



The information in this document is subject to change without notice. Before using this document, please confirm that this is the latest version.
 Not all devices/types available in every country. Please check with local NEC representative for availability and additional information.

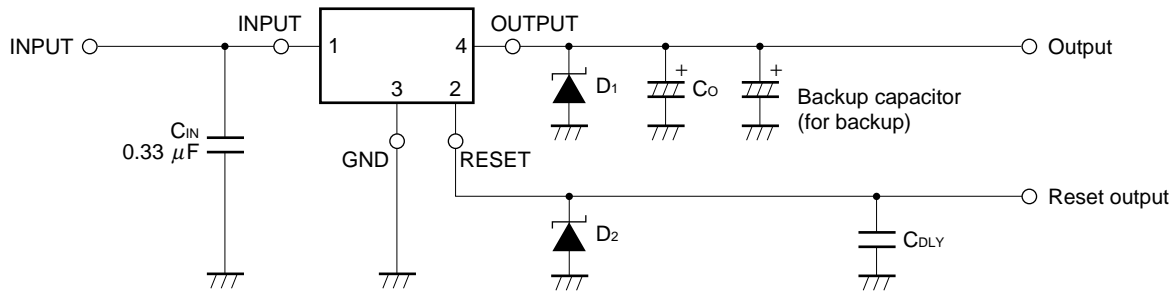
ABSOLUTE MAXIMUM RATINGS (Unless otherwise specified, T_A = 25°C)

Parameter	Symbol	Rating	Unit
Input Voltage	V _{IN}	-0.3 to +12	V
Total Power Dissipation	P _T	1.2 ^{Note}	W
Operating Ambient Temperature	T _A	-20 to +85	°C
Operating Junction Temperature	T _J	-20 to +150	°C
Storage Temperature	T _{stg}	-55 to +150	°C
Thermal Resistance (Junction to Case)	R _{th(J-C)}	10	°C/W
Thermal Resistance (Junction to Ambient)	R _{th(J-A)}	104	°C/W

Note The total loss is limited by an internal circuit. Where T_J > 150°C, an internal protection circuit cuts off the output.

Caution If any of the parameters exceeds the absolute maximum ratings, even momentarily, the quality of the product may be impaired. The absolute maximum ratings are values that may physically damage the product(s). Be sure to use the product(s) within the ratings.

STANDARD CONNECTION



- C_{IN} : Determine the capacitance depending on the line between the power supply smoothing circuit and input pin. Be sure to connect this capacitor to prevent abnormal oscillation. Use of a capacitor, such as a film capacitor, with excellent voltage and temperature characteristics is recommended. Note that some laminated ceramic capacitors have poor temperature and voltage characteristics. When using a laminated ceramic capacitor, the capacitance must be stable in the voltage and temperature ranges used.
- C_O : Must be 10 μF or more. Be sure to connect this capacitor to prevent oscillation and to improve transient load stability.
Connect C_{IN} and C_O as close to the IC (within 1 to 2 cm) as possible.
- D₁, D₂ : Connect Schottky barrier diodes (with a low forward voltage) if the voltage on the OUTPUT and RESET pins is lower than that on the GND pin.

μPC2251

RECOMMENDED OPERATING CONDITIONS

Parameter	Symbol	MIN.	TYP.	MAX.	Unit
Input Voltage	V_{IN}	3.5	4	9	V
Output Current	I_o	0		40	mA
Operating Junction Temperature	T_J	-20		+125	°C

Caution The recommended operating range may be exceeded without causing any problems provided that the absolute maximum ratings are not exceeded. However, if the device is operated in a way that exceeds the recommended operating conditions, the margin between the actual conditions of use and the absolute maximum ratings is small, and therefore thorough evaluation is necessary. The recommended operating conditions do not imply that the device can be used with all values at their maximum values.

ELECTRICAL SPECIFICATIONS

(Unless otherwise specified, $V_{IN} = 4\text{ V}$, $I_o = 40\text{ mA}$, $T_J = 25^\circ\text{C}$, $C_{IN} = 0.33\text{ }\mu\text{F}$, $C_o = 10\text{ }\mu\text{F}$.)

Parameter	Symbol	Conditions	MIN.	TYP.	MAX.	Unit
Output Voltage	V_{O1}		2.88	3.00	3.12	V
	V_{O2}	$3.5\text{ V} \leq V_{IN} \leq 9\text{ V}$, $1\text{ mA} \leq I_o \leq 40\text{ mA}$, $0^\circ\text{C} \leq T_J \leq 125^\circ\text{C}$	2.85		3.15	V
Line Regulation	REG_{IN}	$3.5\text{ V} \leq V_{IN} \leq 12\text{ V}$			50	mV
		$3.5\text{ V} \leq V_{IN} \leq 9\text{ V}$			20	mV
Load Regulation	REG_L	$1\text{ mA} \leq I_o \leq 100\text{ mA}$			50	mV
		$1\text{ mA} \leq I_o \leq 40\text{ mA}$			20	mV
Quiescent Current	I_{BIAS}	$I_o = 0\text{ A}$			2.0	mA
		$I_o = 100\text{ mA}$		8.0		mA
Quiescent Current Change	ΔI_{BIAS}	$4\text{ V} \leq V_{IN} \leq 12\text{ V}$			1.0	mA
Output Noise Voltage	V_n	$10\text{ Hz} \leq f \leq 100\text{ kHz}$		70		$\mu\text{V}_{r.m.s.}$
Ripple Rejection	$R \bullet R$	$f = 120\text{ Hz}$, $4\text{ V} \leq V_{IN} \leq 9\text{ V}$	48			dB
Dropout Voltage	V_{DIF}	$I_o = 40\text{ mA}$, $0^\circ\text{C} \leq T_J \leq 125^\circ\text{C}$		0.15	0.30	V
Short Circuit Current	I_{Oshort}	$V_{IN} = 12\text{ V}$		15		mA
Peak Output Current	I_{Opeak}	$V_{IN} = 4\text{ V}$		150		mA
Temperature Coefficient of Output Voltage	$\Delta V_o/\Delta T$	$I_o = 5\text{ mA}$, $0^\circ\text{C} \leq T_J \leq 125^\circ\text{C}$		0.2		mV/°C
OFF Output Leakage Current	I_{OLK}	$V_{IN} = 0\text{ V}$, $V_o = 3.0\text{ V}$			10	μA
Reset Start Output Voltage	V_{ORT}	$0^\circ\text{C} \leq T_J \leq 125^\circ\text{C}$	$V_{O1} - 0.2$		$V_{O1} - 0.1$	V
Reset Output Saturated Voltage	$V_{RT(sat)}$	$I_R = 1.6\text{ mA}$			0.8	V

μPC2253

RECOMMENDED OPERATING CONDITIONS

Parameter	Symbol	MIN.	TYP.	MAX.	Unit
Input Voltage	V_{IN}	5.5	6	12	V
Output Current	I_o	0		40	mA
Operating Junction Temperature	T_J	-20		+125	°C

Caution The recommended operating range may be exceeded without causing any problems provided that the absolute maximum ratings are not exceeded. However, if the device is operated in a way that exceeds the recommended operating conditions, the margin between the actual conditions of use and the absolute maximum ratings is small, and therefore thorough evaluation is necessary. The recommended operating conditions do not imply that the device can be used with all values at their maximum values.

ELECTRICAL SPECIFICATIONS

(Unless otherwise specified, $V_{IN} = 6\text{ V}$, $I_o = 40\text{ mA}$, $T_J = 25^\circ\text{C}$, $C_{IN} = 0.33\text{ }\mu\text{F}$, $C_o = 10\text{ }\mu\text{F}$.)

Parameter	Symbol	Conditions	MIN.	TYP.	MAX.	Unit
Output Voltage	V_{O1}		4.8	5.0	5.2	V
	V_{O2}	$5.5\text{ V} \leq V_{IN} \leq 12\text{ V}$, $1\text{ mA} \leq I_o \leq 40\text{ mA}$, $0^\circ\text{C} \leq T_J \leq 125^\circ\text{C}$	4.75		5.25	V
Line Regulation	REG_{IN}	$5.5\text{ V} \leq V_{IN} \leq 12\text{ V}$			30	mV
Load Regulation	REG_L	$1\text{ mA} \leq I_o \leq 100\text{ mA}$			80	mV
		$1\text{ mA} \leq I_o \leq 40\text{ mA}$			30	mV
Quiescent Current	I_{BIAS}	$I_o = 0\text{ A}$			2.0	mA
		$I_o = 100\text{ mA}$		8.0		mA
Quiescent Current Change	ΔI_{BIAS}	$6\text{ V} \leq V_{IN} \leq 12\text{ V}$			1.0	mA
Output Noise Voltage	V_n	$10\text{ Hz} \leq f \leq 100\text{ kHz}$		130		$\mu\text{V}_{r.m.s.}$
Ripple Rejection	$R \bullet R$	$f = 120\text{ Hz}$, $6\text{ V} \leq V_{IN} \leq 11\text{ V}$	46			dB
Dropout Voltage	V_{DIF}	$I_o = 40\text{ mA}$, $0^\circ\text{C} \leq T_J \leq 125^\circ\text{C}$		0.15	0.30	V
Short Circuit Current	I_{Oshort}	$V_{IN} = 12\text{ V}$		15		mA
Peak Output Current	I_{Opeak}	$V_{IN} = 6\text{ V}$		150		mA
Temperature Coefficient of Output Voltage	$\Delta V_o/\Delta T$	$I_o = 5\text{ mA}$, $0^\circ\text{C} \leq T_J \leq 125^\circ\text{C}$		0.3		mV/°C
OFF Output Leakage Current	I_{OLK}	$V_{IN} = 0\text{ V}$, $V_o = 5.0\text{ V}$			10	μA
Reset Start Output Voltage	V_{ORT}	$0^\circ\text{C} \leq T_J \leq 125^\circ\text{C}$	2.70	2.85	3.00	V
Reset Output Saturated Voltage	$V_{RT(sat)}$	$I_R = 1.6\text{ mA}$			0.8	V

μPC2255

RECOMMENDED OPERATING CONDITIONS

Parameter	Symbol	MIN.	TYP.	MAX.	Unit
Input Voltage	V_{IN}	5.5	6	12	V
Output Current	I_o	0		40	mA
Operating Junction Temperature	T_J	-20		+125	°C

Caution The recommended operating range may be exceeded without causing any problems provided that the absolute maximum ratings are not exceeded. However, if the device is operated in a way that exceeds the recommended operating conditions, the margin between the actual conditions of use and the absolute maximum ratings is small, and therefore thorough evaluation is necessary. The recommended operating conditions do not imply that the device can be used with all values at their maximum values.

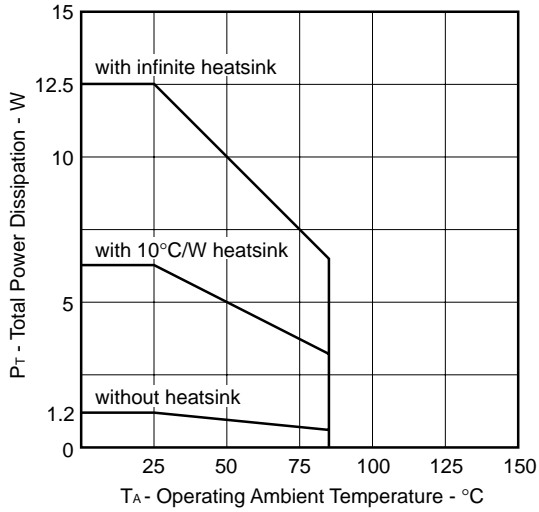
ELECTRICAL SPECIFICATIONS

(Unless otherwise specified, $V_{IN} = 6\text{ V}$, $I_o = 40\text{ mA}$, $T_J = 25^\circ\text{C}$, $C_{IN} = 0.33\text{ }\mu\text{F}$, $C_o = 10\text{ }\mu\text{F}$.)

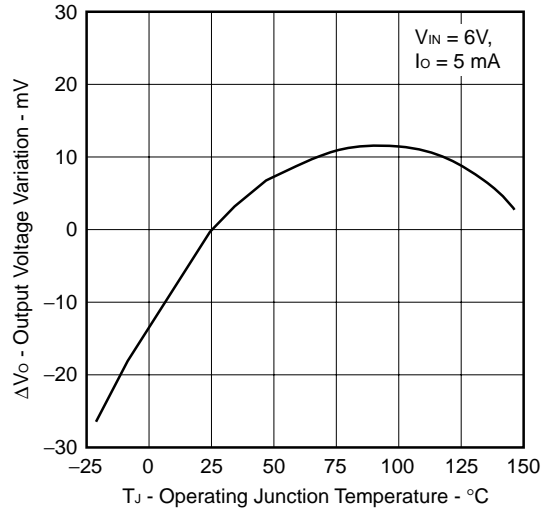
Parameter	Symbol	Conditions	MIN.	TYP.	MAX.	Unit
Output Voltage	V_{O1}		4.8	5.0	5.2	V
	V_{O2}	$5.5\text{ V} \leq V_{IN} \leq 12\text{ V}$, $1\text{ mA} \leq I_o \leq 40\text{ mA}$, $0^\circ\text{C} \leq T_J \leq 125^\circ\text{C}$	4.75		5.25	V
Line Regulation	REG_{IN}	$5.5\text{ V} \leq V_{IN} \leq 12\text{ V}$			30	mV
Load Regulation	REG_L	$1\text{ mA} \leq I_o \leq 100\text{ mA}$			80	mV
		$1\text{ mA} \leq I_o \leq 40\text{ mA}$			30	mV
Quiescent Current	I_{BIAS}	$I_o = 0\text{ A}$			2.0	mA
		$I_o = 100\text{ mA}$		8.0		mA
Quiescent Current Change	ΔI_{BIAS}	$6\text{ V} \leq V_{IN} \leq 12\text{ V}$			1.0	mA
Output Noise Voltage	V_n	$10\text{ Hz} \leq f \leq 100\text{ kHz}$		130		$\mu\text{V}_{r.m.s.}$
Ripple Rejection	$R \bullet R$	$f = 120\text{ Hz}$, $6\text{ V} \leq V_{IN} \leq 11\text{ V}$	46			dB
Dropout Voltage	V_{DIF}	$I_o = 40\text{ mA}$, $0^\circ\text{C} \leq T_J \leq 125^\circ\text{C}$		0.15	0.30	V
Short Circuit Current	I_{Oshort}	$V_{IN} = 12\text{ V}$		15		mA
Peak Output Current	I_{Opeak}	$V_{IN} = 6\text{ V}$		150		mA
Temperature Coefficient of Output Voltage	$\Delta V_o / \Delta T$	$I_o = 5\text{ mA}$, $0^\circ\text{C} \leq T_J \leq 125^\circ\text{C}$		0.3		mV/°C
OFF Output Leakage Current	I_{OLK}	$V_{IN} = 0\text{ V}$, $V_o = 5.0\text{ V}$			10	μA
Reset Start Output Voltage	V_{ORT}	$0^\circ\text{C} \leq T_J \leq 125^\circ\text{C}$	$V_{O1} - 0.3$		$V_{O1} - 0.2$	V
Reset Output Saturated Voltage	$V_{RT(sat)}$	$I_R = 1.6\text{ mA}$			0.8	V

CHARACTERISTIC CURVES (Unless otherwise specified, $T_A = 25^\circ\text{C}$. Reference values)

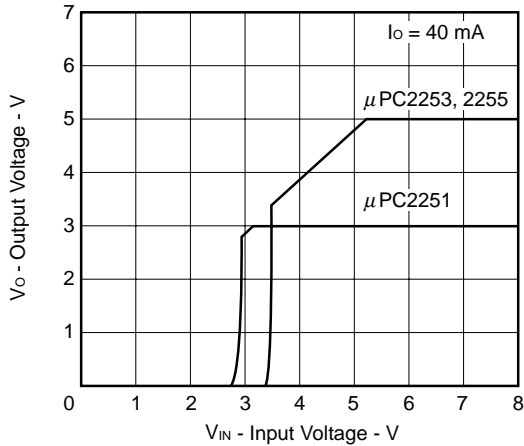
P_T vs. T_A Characteristics



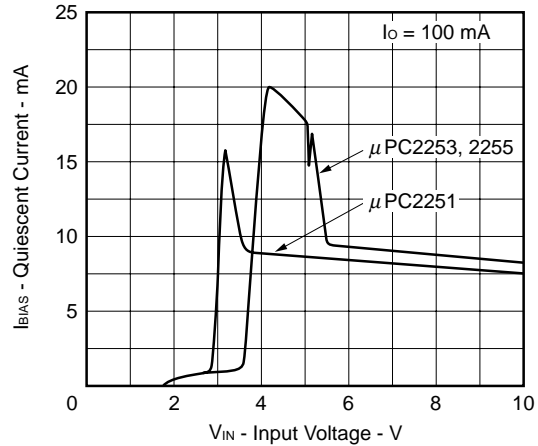
ΔV_o - T_J Characteristics



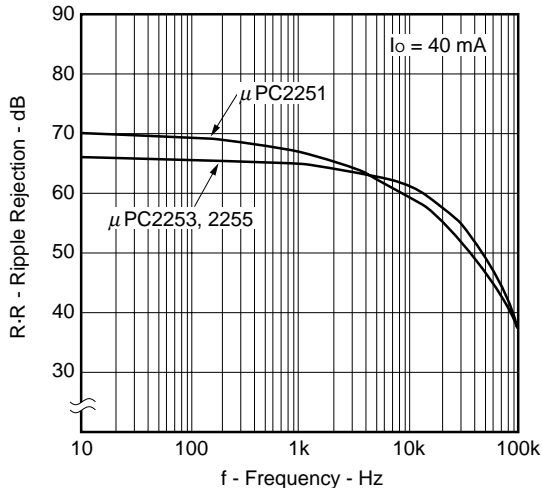
V_o - V_{IN} Characteristics



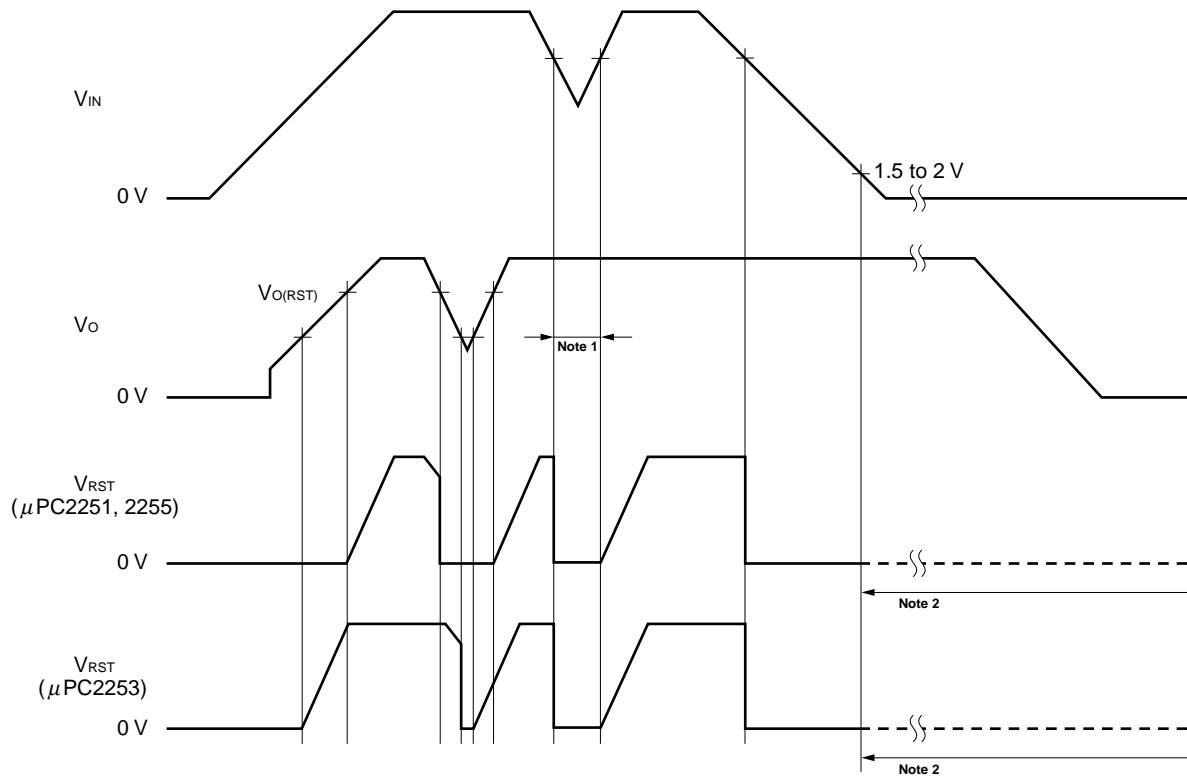
I_{BIAS} - V_{IN} Characteristics



R·R - f Characteristics



RESET OUTPUT CHARACTERISTICS (with standard connection)



- Notes**
1. The reset signal is output if the circuit enters backup status when the input voltage falls below the output voltage.
 2. The reset output is undefined if the input voltage is 1.5 to 2 V or lower.

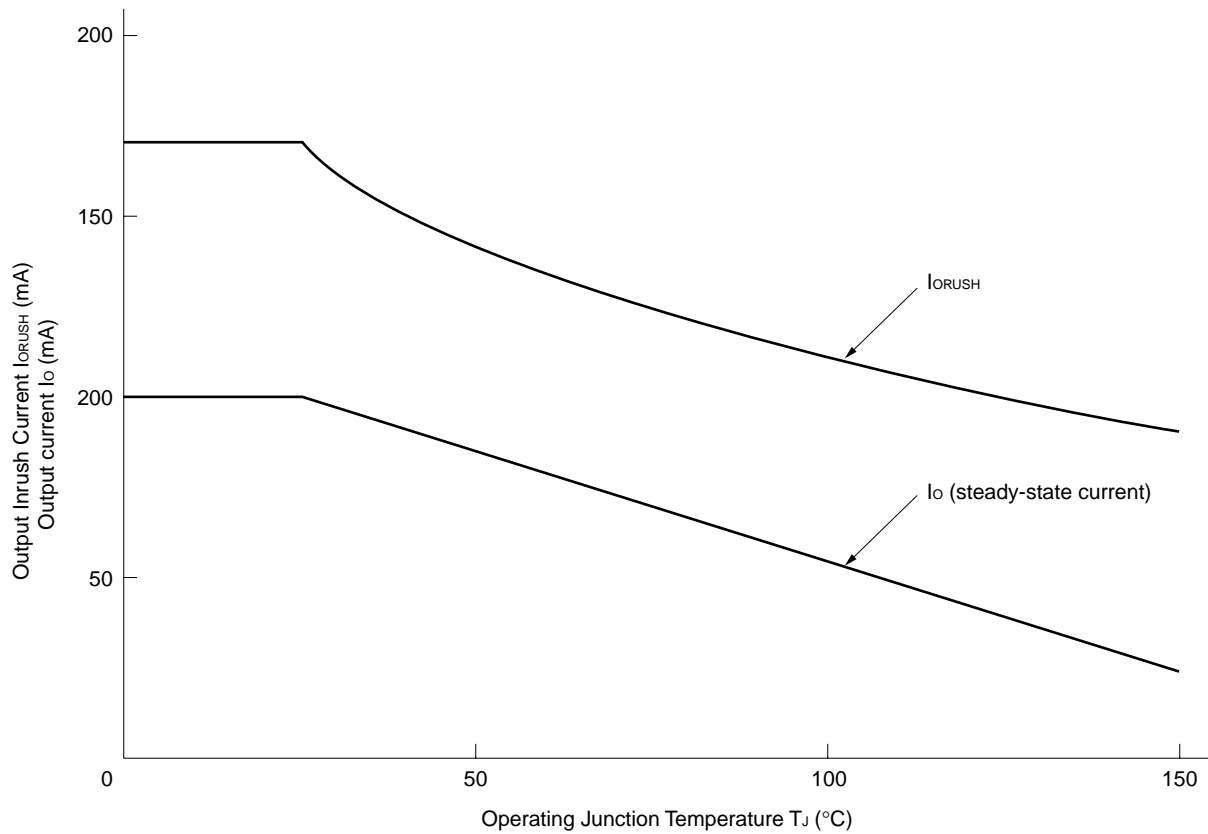
NOTES ON CORRECT USE

Keep the output current of the μPC2250 series to within I_o (steady-state current) in Figure 1 at the operating junction temperature (T_j).

Keep the output current, including the inrush current to the output capacitor, to within I_{ORUSH} in the figure when starting the circuit.

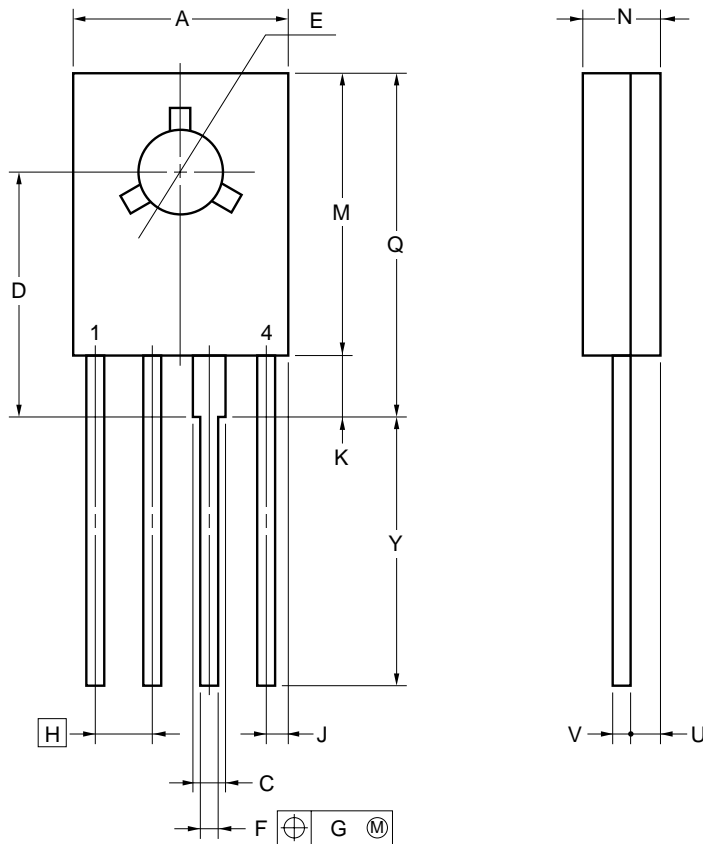
If these current limits are exceeded, the output voltage may not rise to the specified level because of the operation of the overcurrent limiter circuit.

Figure 1. Output Current Limits of μPC2250 Series



PACKAGE DRAWINGS

4 PIN PLASTIC SIP (TO-126)



NOTE

Each lead centerline is located within 0.2 mm (0.008 inch) of its true position (T.P.) at maximum material condition.

ITEM	MILLIMETERS	INCHES
A	8.5 MAX.	0.335 MAX.
C	1.1 MIN.	0.043 MIN.
D	9.7±0.3	0.382±0.012
E	φ3.2±0.1	φ0.126±0.004
F	0.65±0.1	0.026 ^{+0.004} _{-0.005}
G	0.2	0.008
H	2.0	0.079
J	1.25 MAX.	0.05 MAX.
K	2.3 MIN.	0.09 MIN.
M	11.5 MAX.	0.453 MAX.
N	2.7±0.2	0.106 ^{+0.009} _{-0.008}
Q	14.5 MAX.	0.571 MAX.
U	1.7 MAX.	0.067 MAX.
V	0.55±0.1	0.022 ^{+0.004} _{-0.005}
Y	13.5±0.7	0.531 ^{+0.029} _{-0.028}

P4HP-200B-1

RECOMMENDED SOLDERING CONDITIONS

Solder this product under the following recommended conditions.

For details of the recommended soldering conditions, refer to information document **Semiconductor Device Mounting Technology Manual (C10535E)**.

For soldering methods and conditions other than those recommended, consult NEC.

Through Hole Type Soldering Conditions

μPC2251H, 2253H, 2255H: 4-pin plastic SIP (TO-126)

Soldering Method	Soldering Conditions
Wave soldering (Pins only)	Solder bath temperature: 260°C max., Time: 10 sec max.
Partial heating	Pin temperature: 300°C max., Time: 3 sec max. (per pin)

Caution When soldering this product using wave soldering, exercise care that the solder does not come in direct contact with the package.

[MEMO]

- **The information in this document is subject to change without notice. Before using this document, please confirm that this is the latest version.**
 - No part of this document may be copied or reproduced in any form or by any means without the prior written consent of NEC Corporation. NEC Corporation assumes no responsibility for any errors which may appear in this document.
 - NEC Corporation does not assume any liability for infringement of patents, copyrights or other intellectual property rights of third parties by or arising from use of a device described herein or any other liability arising from use of such device. No license, either express, implied or otherwise, is granted under any patents, copyrights or other intellectual property rights of NEC Corporation or others.
 - Descriptions of circuits, software, and other related information in this document are provided for illustrative purposes in semiconductor product operation and application examples. The incorporation of these circuits, software, and information in the design of the customer's equipment shall be done under the full responsibility of the customer. NEC Corporation assumes no responsibility for any losses incurred by the customer or third parties arising from the use of these circuits, software, and information.
 - While NEC Corporation has been making continuous effort to enhance the reliability of its semiconductor devices, the possibility of defects cannot be eliminated entirely. To minimize risks of damage or injury to persons or property arising from a defect in an NEC semiconductor device, customers must incorporate sufficient safety measures in its design, such as redundancy, fire-containment, and anti-failure features.
 - NEC devices are classified into the following three quality grades:
"Standard", "Special", and "Specific". The Specific quality grade applies only to devices developed based on a customer designated "quality assurance program" for a specific application. The recommended applications of a device depend on its quality grade, as indicated below. Customers must check the quality grade of each device before using it in a particular application.
 - Standard: Computers, office equipment, communications equipment, test and measurement equipment, audio and visual equipment, home electronic appliances, machine tools, personal electronic equipment and industrial robots
 - Special: Transportation equipment (automobiles, trains, ships, etc.), traffic control systems, anti-disaster systems, anti-crime systems, safety equipment and medical equipment (not specifically designed for life support)
 - Specific: Aircraft, aerospace equipment, submersible repeaters, nuclear reactor control systems, life support systems or medical equipment for life support, etc.
- The quality grade of NEC devices is "Standard" unless otherwise specified in NEC's Data Sheets or Data Books. If customers intend to use NEC devices for applications other than those specified for Standard quality grade, they should contact an NEC sales representative in advance.