

Intersil's Satellite Applications Flow™ (SAF) devices are fully tested and guaranteed to 100kRAD Total Dose. These QML Class T devices are processed to a standard flow intended to meet the cost and shorter lead-time needs of large volume satellite manufacturers, while maintaining a high level of reliability.

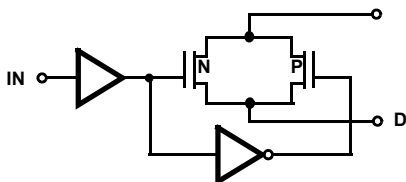
The HS-302RH, HS-302EH analog switches are a monolithic device fabricated using Radiation Hardened CMOS technology and the Intersil dielectric isolation process for latch-up free operation. Improved total dose hardness is obtained by layout (thin oxide tabs extending to a channel stop) and processing (hardened gate oxide). These switches offer low-resistance switching performance for analog voltages up to the supply rails. ON-resistance is low and stays reasonably constant over the full range of operating voltage and current. ON-resistance also stays reasonably constant when exposed to radiation, being typically 30Ω pre-rad and 35Ω post 100kRAD(Si). These devices provide break-before-make switching.

**Specifications**

Specifications for Rad Hard QML devices are controlled by the Defense Logistics Agency Land and Maritime (DLA). The SMD numbers listed below must be used when ordering.

Detailed Electrical Specifications for the HS-302RH, HS-302EH are contained in SMD# [5962-95812](#).

**Functional Diagram**



TRUTH TABLE

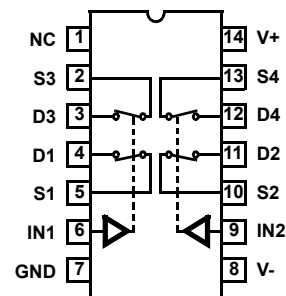
LOGIC	ALL SWITCHES
0	OFF
1	ON

**Features**

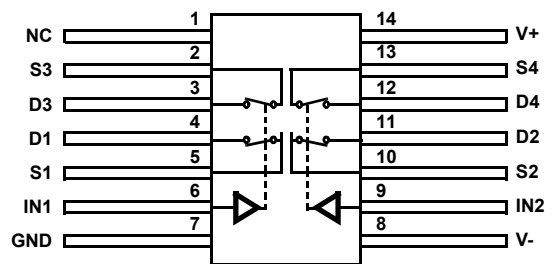
- QML class T, Per MIL-PRF-38535
- Radiation performance
  - Gamma dose ( $\gamma$ )  $1 \times 10^5$  RAD(Si)
- No latch-up, dielectrically isolated device islands
- Pin for pin compatible with Intersil HI-302 series analog switches
- Analog signal range 15V
- Low leakage ..... 100nA (Max, Post Rad)
- Low  $R_{ON}$  ..... 60Ω (Max, Post Rad)
- Low operating power ..... 100μA (Max, Post Rad)

**Pin Configurations**

HS1-302RH, HS1-302EH  
(14 LD SBDIP), CDIP2-T14  
TOP VIEW



HS9-302RH, HS9-302EH  
(14 LD FLATPACK), CDFP3-F14  
TOP VIEW



## Ordering Information

ORDERING SMD NUMBER (Note 2)	PART NUMBER	TEMP. RANGE (°C)	PACKAGE (RoHS Compliant) (Note 1)	PKG. DWG. #
5962R9581201V9A	HS0-302RH-Q	-55 to +125	Die	
5962R9581204V9A	HS0-302EH-Q	-55 to +125	Die	
5962R9581201QCC	HS1-302RH-8	-55 to +125	14 Ld SBDIP	D14.3
5962R9581201VCC	HS1-302RH-Q	-55 to +125	14 Ld SBDIP	D14.3
5962R9581204VCC	HS1-302EH-Q	-55 to +125	14 Ld SBDIP	D14.3
5962R9581201QXC	HS9-302RH-8	-55 to +125	14 Ld Flatpack	K14.A
5962R9581201VXC	HS9-302RH-Q	-55 to +125	14 Ld Flatpack	K14.A
5962R9581204VXC	HS9-302EH-Q	-55 to +125	14 Ld Flatpack	K14.A
HS9-302RH/PROTO	HS9-302RH/PROTO	-55 to +125	14 Ld Flatpack	K14.A
HS0-302RH/SAMPLE	HS0-302RH/SAMPLE	-55 to +125	Die	

### NOTES:

1. These Intersil Pb-free Hermetic packaged products employ 100% Au plate - e4 termination finish, which is RoHS compliant and compatible with both SnPb and Pb-free soldering operations.
2. Specifications for Rad Hard QML devices are controlled by the Defense Logistics Agency Land and Maritime (DLA). The SMD numbers listed in the "Ordering Information" table on page 2 must be used when ordering..

## Die Characteristics

### DIE DIMENSIONS:

(2130 $\mu\text{m}$  x 1930 $\mu\text{m}$  x 533 $\mu\text{m}$   $\pm$ 25.4 $\mu\text{m}$ )  
84 x 76 x 21mils  $\pm$ 1mil

### METALLIZATION:

Type: Al  
Thickness: 12.5k $\text{\AA}$   $\pm$ 2k $\text{\AA}$

### SUBSTRATE POTENTIAL:

Unbiased (DI)

### BACKSIDE FINISH:

Silicon

### PASSIVATION:

Type: Silox ( $\text{SiO}_2$ )  
Thickness: 8k $\text{\AA}$   $\pm$ 1k $\text{\AA}$

### WORST CASE CURRENT DENSITY:

< 2.0e5 A/cm<sup>2</sup>

### TRANSISTOR COUNT:

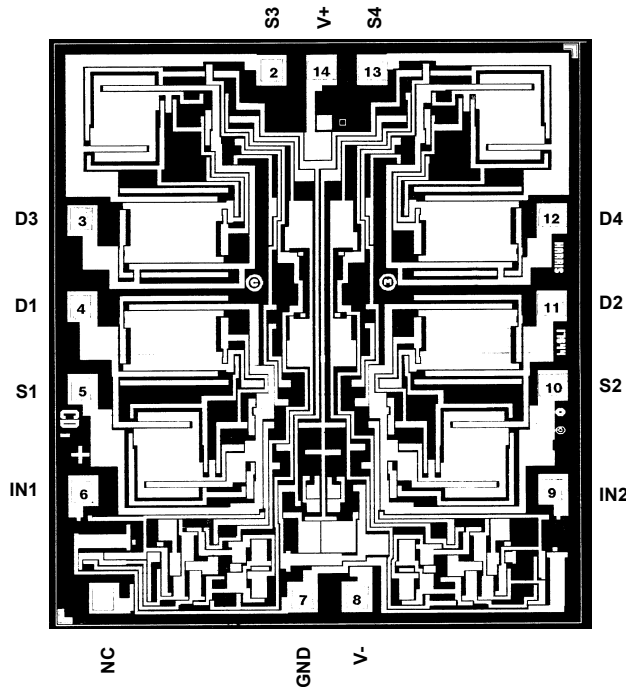
76

### PROCESS:

Metal Gate CMOS, Dielectric Isolation

## Metallization Mask Layout

HS-302RH, HS-302EH



© Copyright Intersil Americas LLC 2002-2013. All Rights Reserved.  
All trademarks and registered trademarks are the property of their respective owners.

For additional products, see [www.intersil.com/en/products.html](http://www.intersil.com/en/products.html)

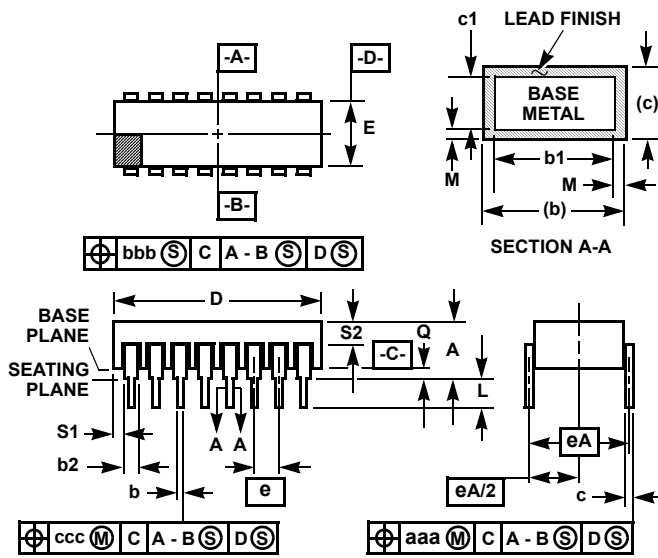
Intersil products are manufactured, assembled and tested utilizing ISO9001 quality systems as noted in the quality certifications found at [www.intersil.com/en/support/qualandreliability.html](http://www.intersil.com/en/support/qualandreliability.html)

*Intersil products are sold by description only. Intersil may modify the circuit design and/or specifications of products at any time without notice, provided that such modification does not, in Intersil's sole judgment, affect the form, fit or function of the product. Accordingly, the reader is cautioned to verify that datasheets are current before placing orders. Information furnished by Intersil is believed to be accurate and reliable. However, no responsibility is assumed by Intersil or its subsidiaries for its use; nor for any infringements of patents or other rights of third parties which may result from its use. No license is granted by implication or otherwise under any patent or patent rights of Intersil or its subsidiaries.*

For information regarding Intersil Corporation and its products, see [www.intersil.com](http://www.intersil.com)

**Ceramic Dual-In-Line Metal Seal Packages (SBDIP)**

**D14.3 MIL-STD-1835 CDIP2-T14 (D-1, CONFIGURATION C)  
14 LEAD CERAMIC DUAL-IN-LINE METAL SEAL PACKAGE**



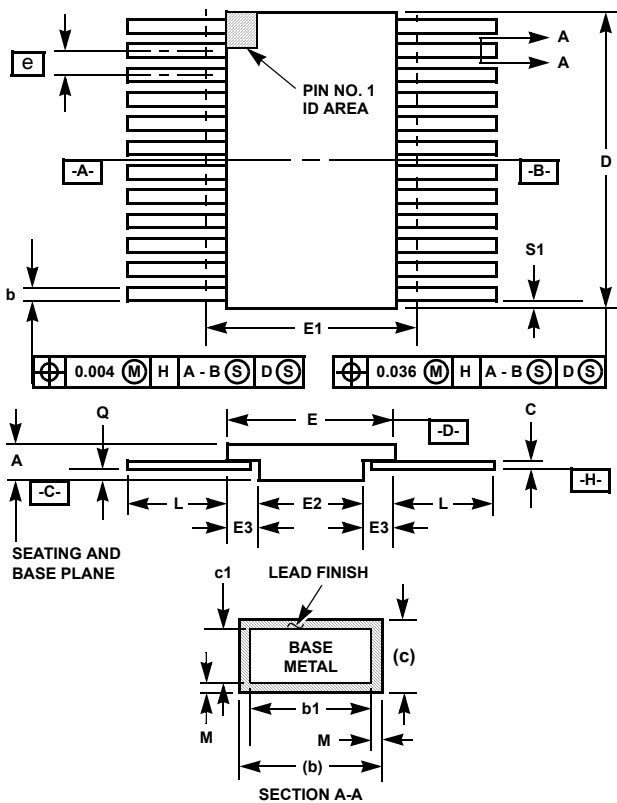
**NOTES:**

3. Index area: A notch or a pin one identification mark shall be located adjacent to pin one and shall be located within the shaded area shown. The manufacturer's identification shall not be used as a pin one identification mark.
4. The maximum limits of lead dimensions b and c or M shall be measured at the centroid of the finished lead surfaces, when solder dip or tin plate lead finish is applied.
5. Dimensions b1 and c1 apply to lead base metal only. Dimension M applies to lead plating and finish thickness.
6. Corner leads (1, N, N/2, and N/2+1) may be configured with a partial lead paddle. For this configuration dimension b3 replaces dimension b2.
7. Dimension Q shall be measured from the seating plane to the base plane.
8. Measure dimension S1 at all four corners.
9. Measure dimension S2 from the top of the ceramic body to the nearest metallization or lead.
10. N is the maximum number of terminal positions.
11. Braze fillets shall be concave.
12. Dimensioning and tolerancing per ANSI Y14.5M - 1982.
13. Controlling dimension: INCH.

SYMBOL	INCHES		MILLIMETERS		NOTES
	MIN	MAX	MIN	MAX	
A	-	0.200	-	5.08	-
b	0.014	0.026	0.36	0.66	2
b1	0.014	0.023	0.36	0.58	3
b2	0.045	0.065	1.14	1.65	-
b3	0.023	0.045	0.58	1.14	4
c	0.008	0.018	0.20	0.46	2
c1	0.008	0.015	0.20	0.38	3
D	-	0.785	-	19.94	-
E	0.220	0.310	5.59	7.87	-
e	0.100 BSC		2.54 BSC		-
eA	0.300 BSC		7.62 BSC		-
eA/2	0.150 BSC		3.81 BSC		-
L	0.125	0.200	3.18	5.08	-
Q	0.015	0.060	0.38	1.52	5
S1	0.005	-	0.13	-	6
S2	0.005	-	0.13	-	7
$\alpha$	90°	105°	90°	105°	-
aaa	-	0.015	-	0.38	-
bbb	-	0.030	-	0.76	-
ccc	-	0.010	-	0.25	-
M	-	0.0015	-	0.038	2
N	14		14		8

Rev. 0 4/94

**Ceramic Metal Seal Flatpack Packages (Flatpack)**



**K14.A MIL-STD-1835 CDFP3-F14 (F-2A, CONFIGURATION B)  
14 LEAD CERAMIC METAL SEAL FLATPACK PACKAGE**

SYMBOL	INCHES		MILLIMETERS		NOTES
	MIN	MAX	MIN	MAX	
A	0.045	0.115	1.14	2.92	-
b	0.015	0.022	0.38	0.56	-
b1	0.015	0.019	0.38	0.48	-
c	0.004	0.009	0.10	0.23	-
c1	0.004	0.006	0.10	0.15	-
D	-	0.390	-	9.91	3
E	0.235	0.260	5.97	6.60	-
E1	-	0.290	-	7.11	3
E2	0.125	-	3.18	-	-
E3	0.030	-	0.76	-	7
e	0.050 BSC		1.27 BSC		-
k	0.008	0.015	0.20	0.38	2
L	0.270	0.370	6.86	9.40	-
Q	0.026	0.045	0.66	1.14	8
S1	0.005	-	0.13	-	6
M	-	0.0015	-	0.04	-
N	14		14		-

Rev. 0 5/18/94

**NOTES:**

1. Index area: A notch or a pin one identification mark shall be located adjacent to pin one and shall be located within the shaded area shown. The manufacturer's identification shall not be used as a pin one identification mark. Alternately, a tab (dimension k) may be used to identify pin one.
2. If a pin one identification mark is used in addition to a tab, the limits of dimension k do not apply.
3. This dimension allows for off-center lid, meniscus, and glass over-run.
4. Dimensions b1 and c1 apply to lead base metal only. Dimension M applies to lead plating and finish thickness. The maximum limits of lead dimensions b and c or M shall be measured at the centroid of the finished lead surfaces, when solder dip or tin plate lead finish is applied.
5. N is the maximum number of terminal positions.
6. Measure dimension S1 at all four corners.
7. For bottom-brazed lead packages, no organic or polymeric materials shall be molded to the bottom of the package to cover the leads.
8. Dimension Q shall be measured at the point of exit (beyond the meniscus) of the lead from the body. Dimension Q minimum shall be reduced by 0.0015 inch (0.038mm) maximum when solder dip lead finish is applied.
9. Dimensioning and tolerancing per ANSI Y14.5M - 1982.
10. Controlling dimension: INCH.