

RZ Family

Visual AI SLAM Solution Guide

Introduction

This application note describes the introduction of the Visual AI SLAM solution, which combines AI and SLAM (Simultaneous Localization And Mapping). The Visual AI SLAM solution is a solution that simultaneously performs location estimation (Localization) and driving map generation (Mapping) using images acquired from cameras mounted on automatic guided vehicles.

Target Devices

RZ/V2H series

Contents

1. Overview of Visual AI SLAM (YOLO-Planar-SLAM-DRP) and how to get	2
1.1 Overview	2
1.2 Use and Support	3
1.3 How to get	3
1.4 Target Application	3
2. Feature and Benefit of Visual AI SLAM Solution	4
2.1 Feature	4
2.2 Benefit	6
3. Operating Environment for Visual AI SLAM Solution	7
4. Implementation of Visual AI SLAM solution	9
5. Glossary	10
Revision History	11

1. Overview of Visual AI SLAM (YOLO-Planar-SLAM-DRP) and how to get

1.1 Overview

The Visual AI SLAM Solution developed based on [YoloPlanarSLAM](#). Visual AI SLAM Solution is released under a GPLv3 license.

This solution is realized by running the object detection AI model YOLO with the AI Accelerator (DRP-AI) in the Renesas AI MPU RZ/V2H and further image processing with the Vision Accelerator (DRP). This solution can be confirmed to operate with the RZ/V2H evaluation board kit.

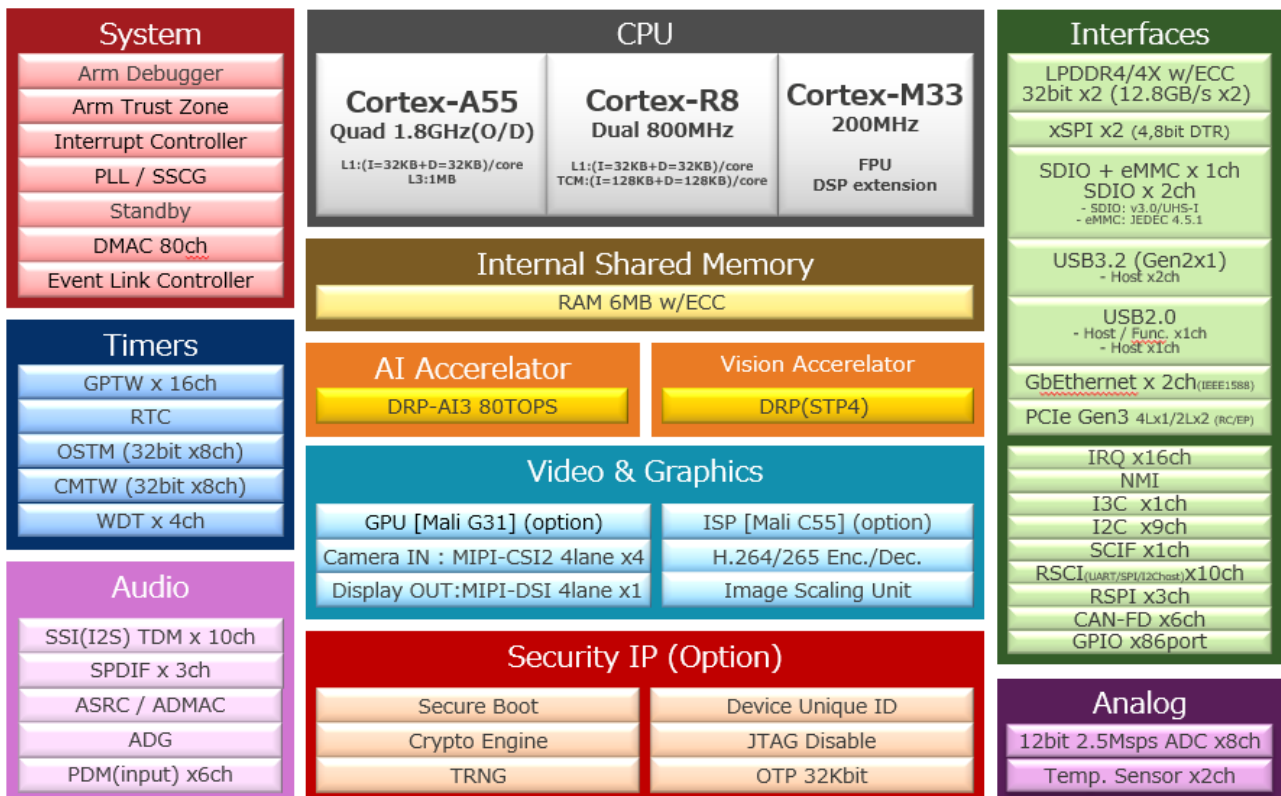


Figure 1-1 RZ/V2H System Block

AI-Accelerator : DRP-AI

DRP-AI consists of AI-MAC (multiply-accumulate processor) and DRP (reconfigurable processor). AI processing can be executed at high speed and low power consumption by assigning AI-MAC for operations on the convolution layer and fully connected layer, and DRP for other complex processing such as preprocessing and pooling layer. For more information, please refer to [AI Accelerator: DRP-AI](#) Web.

Vision Accelerator : DRP

The Dynamically Reconfigurable Processor (DRP) technology from Renesas is special purpose hardware built into select RZ Family microprocessor units (MPUs) that dramatically accelerates image processing algorithms by as much as 10X, or more. It combines the high performance of hardware solutions with the flexibility and expansion capability of a CPU. For more information, please refer to [Vision Accelerator : DRP](#) Web.

1.2 Use and Support

This solution is available free of charge. Please evaluate this solution thoroughly before using it in your products. For customization of this solution, please contact [Computermind Corp.](https://www.computermind.co.jp)

Contact: oss_slam_contact@compmind.co.jp

1.3 How to get

Evaluation boards and software are available at the following URLs.

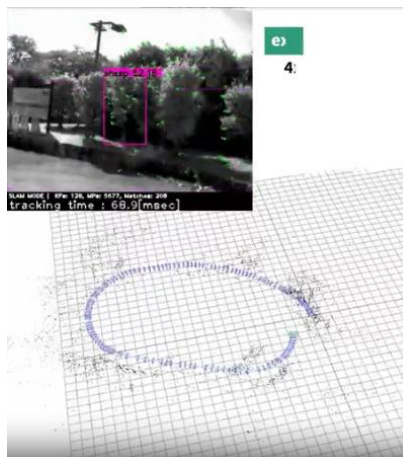
- ✓ RZ/V2H Evaluation Board Kit

[RZ/V2H-EVK - RZ/V2H Quad-core Vision AI MPU Evaluation Kit | Renesas](#)



- ✓ Visual AI SLAM (YOLO-Planar-SLAM-DRP) Solution

[GitHub - ComputermindCorp/yolo-planar-slam-drp: DRP-optimized version of yolo-planer-slam](#)



1.4 Target Application

- AMR (Autonomous Mobile Robot)
- AGV (Automatic Guided Vehicle)
- Lawnmower
- Service Robot
- Robot vacuum cleaner
- UAV(Drone)

2. Feature and Benefit of Visual AI SLAM Solution

2.1 Feature

The key features of this solution are processing speed and low power consumption. The increased processing speed and low power consumption are achieved by processing a portion of the YoloPlanarSLAM processing shown in Figure 2-1 using DRP-AI and DRP in the RZ/V2H.

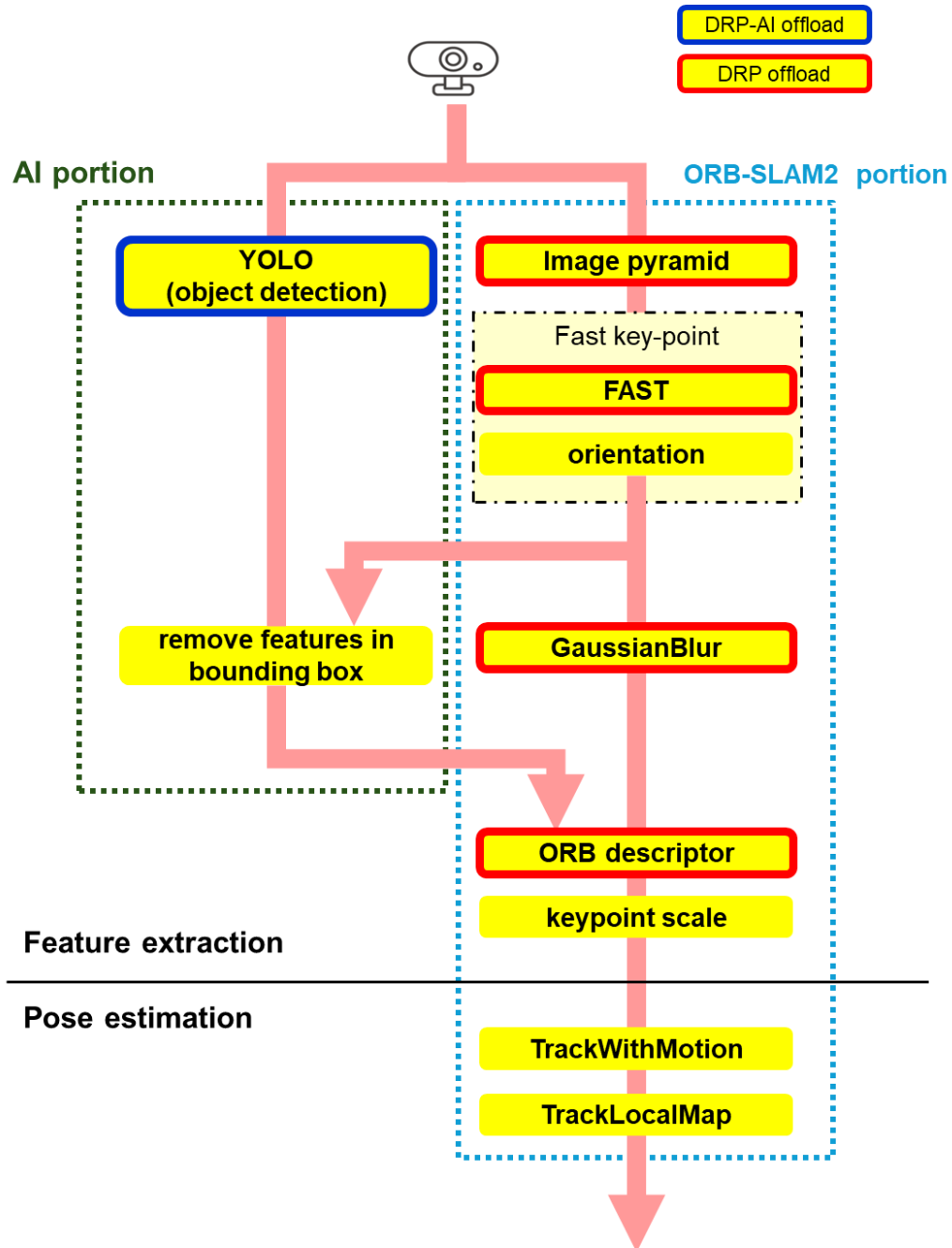


Figure 2-1 Tracking Operation Flowchart

Figure 2-2 shows the processing time when AI processing is performed with DRP-AI and CPU. The Visual AI SLAM solution uses the object detection model YOLOx-s and is up to 448x faster. This processing performance is also shown on the [DRP-AI GitHub](#).

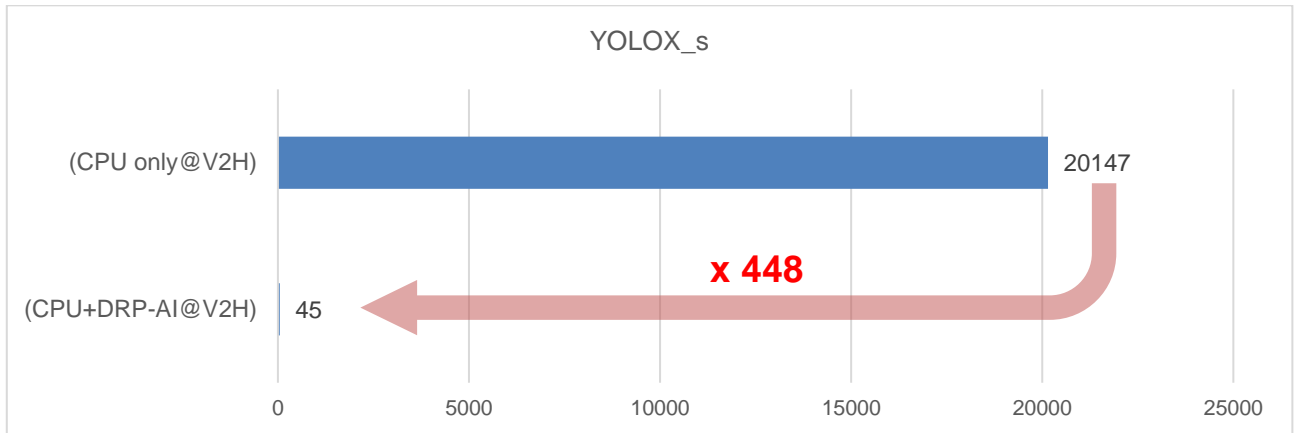


Figure 2-2 Comparison of DRP-AI and CPU AI processing performance

Figure 2-3 shows a comparison of image processing performance between DRP and CPU. The key to the processing speed improvement is FAST processing, which is approximately 12 times faster than CPU.

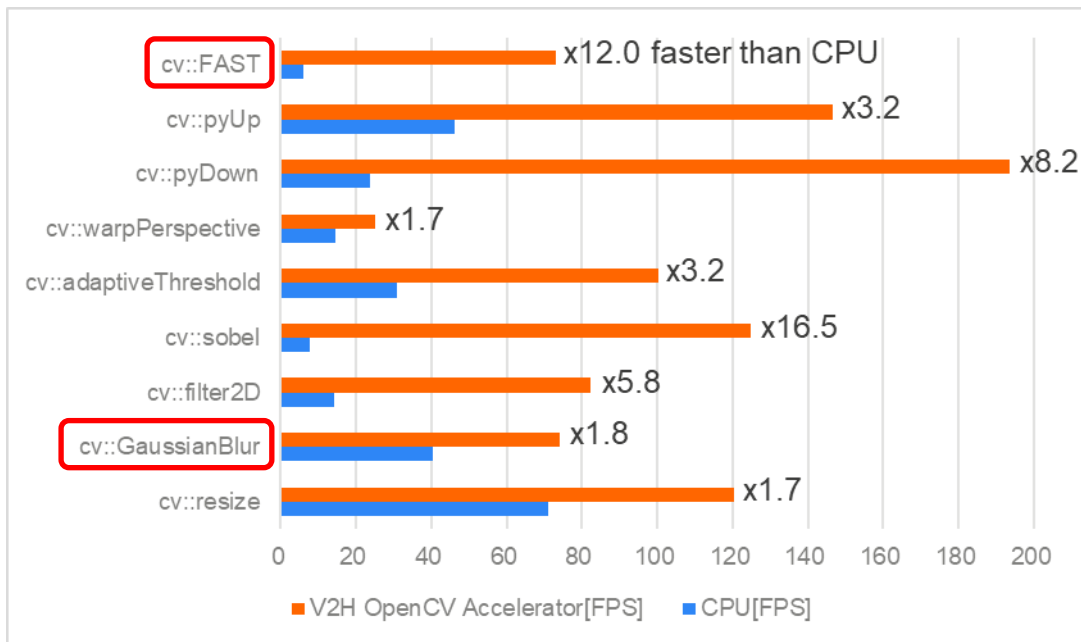


Figure 2-3 Comparison of DRP and CPU image processing performance

2.2 Benefit

The Visual AI SLAM solution is capable of smoothly executing the loop closing shown in the red circle in Figure 2-4 by accelerating the processing with DRP-AI and DRP, thereby reducing the time required to generate an accurate driving map.

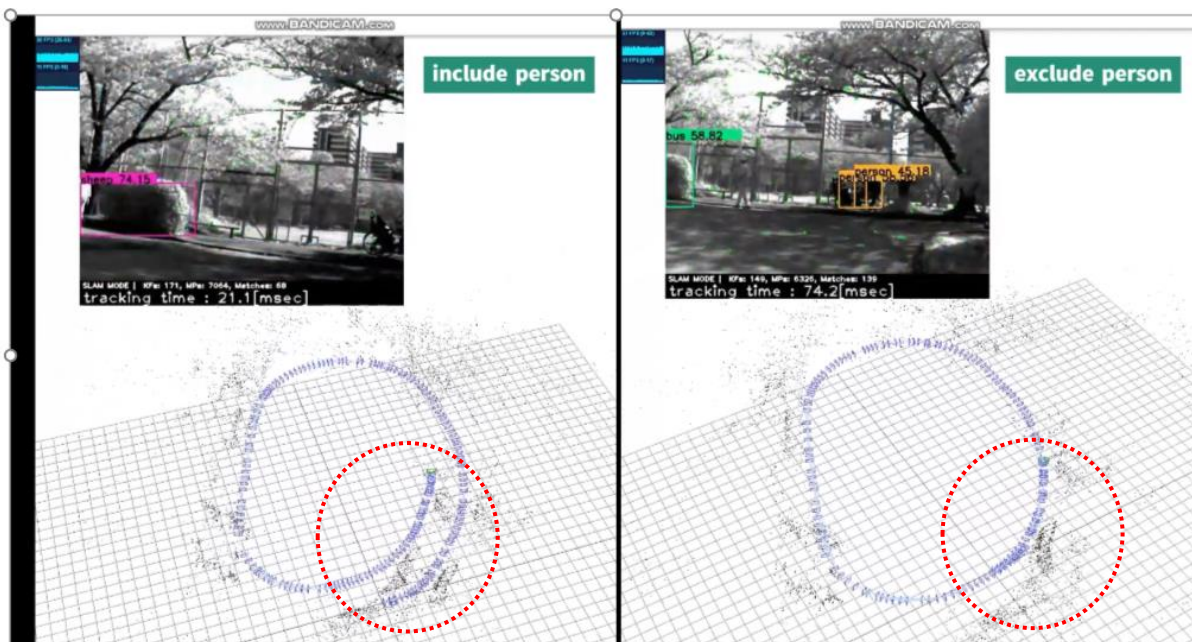


Figure 2-4 Loop-closing

3. Operating Environment for Visual AI SLAM Solution

To confirm the operation of this solution, the environment shown in Table 3-1 is required.

Table 3-1 Operating Environment

Item	Description
Target board	RZ/V2H EVK
Linux PC	Build embedded Linux, Create microSD Card. Ubuntu version 20.04 LTS (64 bit OS must be used.) 100GB free space on HDD is necessary.
Windows PC	For communication with target board. Windows10 recommended.
Terminal software	Terminal software to control the serial console of the target board. (Tera Term is recommended) Available at https://teratermproject.github.io
VCP Driver	Virtual COM port driver Driver for communication between Windows PC and target board via USB http://www.ftdichip.com/Drivers/VCP.htm Please install VCP Driver corresponding to the target board.
Broadband router	DHCP server
microSD card	Required capacity: 8 GB or more. Store Kernel image, device tree, Linux root system.
USB camera	ELP-USBGS720P02-L36 (Camera is not required when using Datasets.)
USB cable micro-B	Connect Win PC and Target board. (Accessories for RZ/V2H EVK)
USB cable Type-C PD 100W / 5A	Connect Win PC and Target board. The board will not power on if the cable is less than 100W.
FFC cable	Connect CPU board and EXP board. (Accessories for RZ/V2H EVK)

Figure 3-1 shows a connection diagram of the V2H evaluation board and other components to operate the Visual AI SLAM Solution.

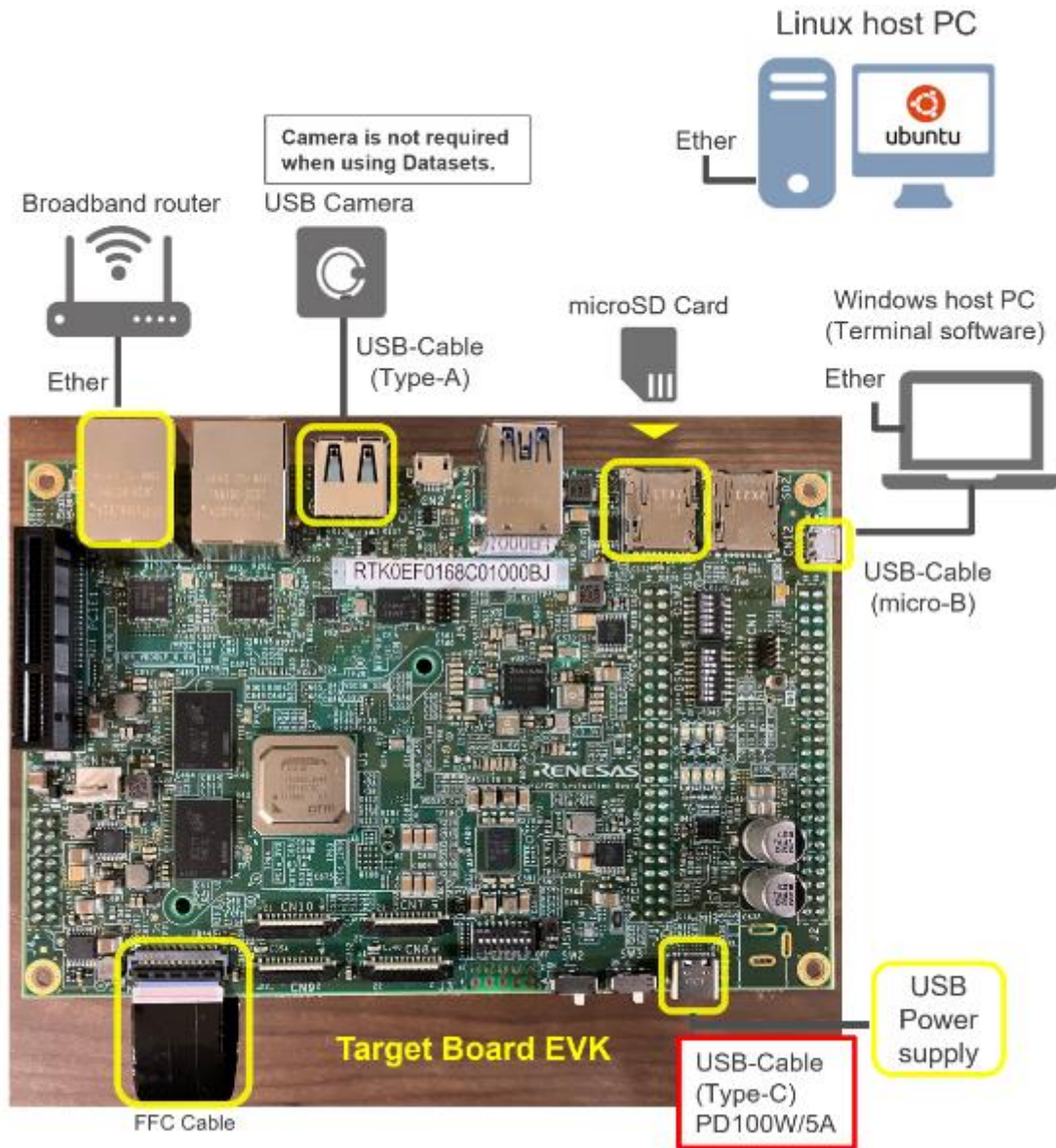


Figure 3-1 Connection diagram

4. Implementation of Visual AI SLAM solution

Implementation flowchart of the Visual AI SLAM solution is shown below. For detailed instructions and operations, please refer to the Visual AI SLAM GitHub below.

Visual AI SLAM GitHub :

[yolo-planar-slam-drp/installguide.md at main · ComputermindCorp/yolo-planar-slam-drp · GitHub](https://github.com/ComputermindCorp/yolo-planar-slam-drp/blob/main/yolo-planar-slam-drp/installguide.md)

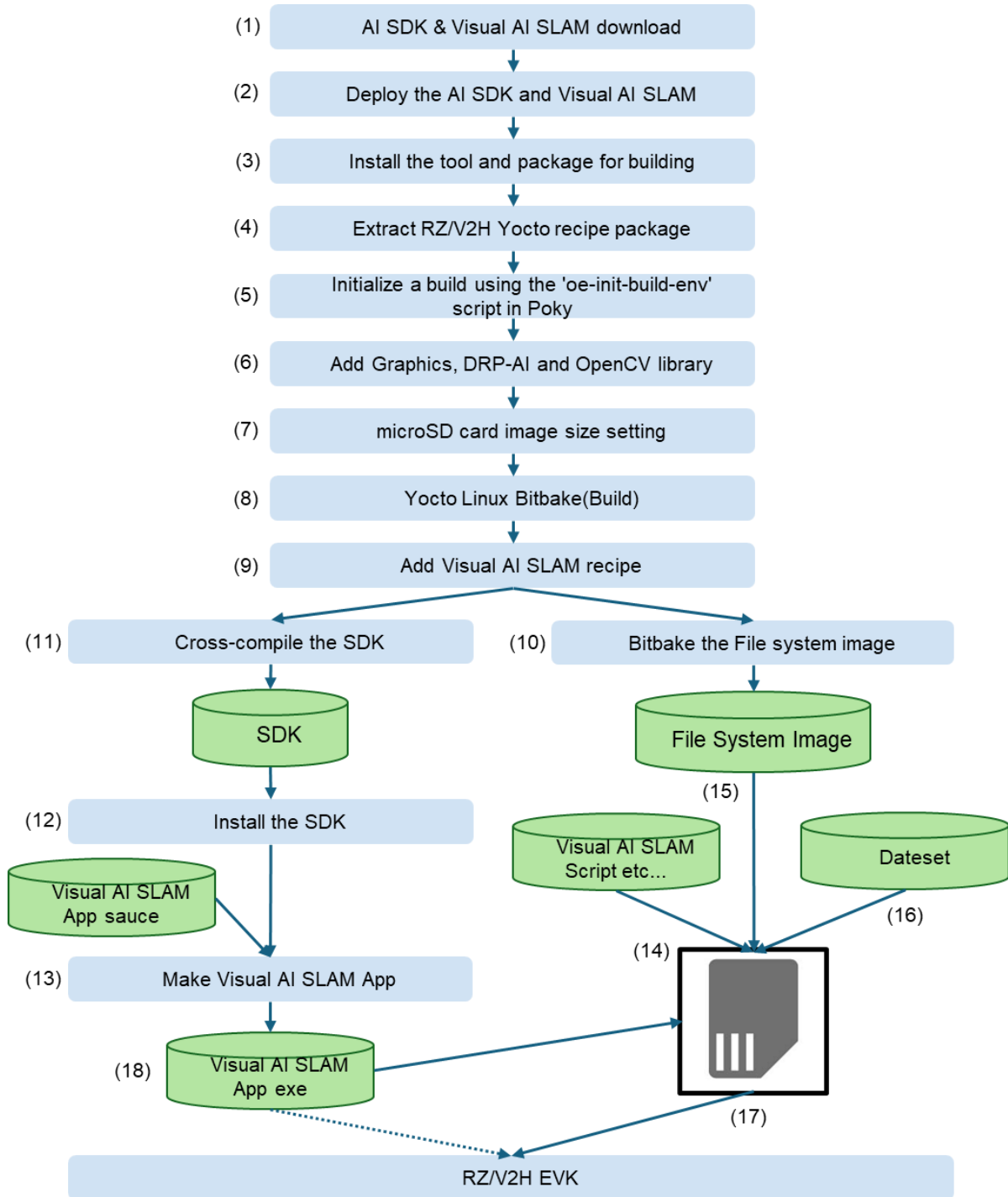


Figure 4-1 Implementation flowchart

5. Glossary

The terms within this application node are listed in the table below.

Item	Description
SLAM	Technology for generating self-position and driving maps
YoloPlanarSLAM	Technology that combines SLAM with an object detection AI model: YOLO to improve the accuracy of self-position and driving map generation
DRP-AI	Renesas Electronics' original hardware AI accelerator
DRP	Renesas Electronics' original dynamic reconstruction processor
AI SDK	Renesas Electronics AI development environment

Revision History

Rev.	Date	Description	
		Page	Summary
1.00	Sep.27.24	-	First release

General Precautions in the Handling of Microprocessing Unit and Microcontroller Unit Products

The following usage notes are applicable to all Microprocessing unit and Microcontroller unit products from Renesas. For detailed usage notes on the products covered by this document, refer to the relevant sections of the document as well as any technical updates that have been issued for the products.

1. Precaution against Electrostatic Discharge (ESD)

A strong electrical field, when exposed to a CMOS device, can cause destruction of the gate oxide and ultimately degrade the device operation. Steps must be taken to stop the generation of static electricity as much as possible, and quickly dissipate it when it occurs. Environmental control must be adequate. When it is dry, a humidifier should be used. This is recommended to avoid using insulators that can easily build up static electricity.

Semiconductor devices must be stored and transported in an anti-static container, static shielding bag or conductive material. All test and measurement tools including work benches and floors must be grounded. The operator must also be grounded using a wrist strap. Semiconductor devices must not be touched with bare hands. Similar precautions must be taken for printed circuit boards with mounted semiconductor devices.

2. Processing at power-on

The state of the product is undefined at the time when power is supplied. The states of internal circuits in the LSI are indeterminate and the states of register settings and pins are undefined at the time when power is supplied. In a finished product where the reset signal is applied to the external reset pin, the states of pins are not guaranteed from the time when power is supplied until the reset process is completed. In a similar way, the states of pins in a product that is reset by an on-chip power-on reset function are not guaranteed from the time when power is supplied until the power reaches the level at which resetting is specified.

3. Input of signal during power-off state

Do not input signals or an I/O pull-up power supply while the device is powered off. The current injection that results from input of such a signal or I/O pull-up power supply may cause malfunction and the abnormal current that passes in the device at this time may cause degradation of internal elements. Follow the guideline for input signal during power-off state as described in your product documentation.

4. Handling of unused pins

Handle unused pins in accordance with the directions given under handling of unused pins in the manual. The input pins of CMOS products are generally in the high-impedance state. In operation with an unused pin in the open-circuit state, extra electromagnetic noise is induced in the vicinity of the LSI, an associated shoot-through current flows internally, and malfunctions occur due to the false recognition of the pin state as an input signal become possible.

5. Clock signals

After applying a reset, only release the reset line after the operating clock signal becomes stable. When switching the clock signal during program execution, wait until the target clock signal is stabilized. When the clock signal is generated with an external resonator or from an external oscillator during a reset, ensure that the reset line is only released after full stabilization of the clock signal. Additionally, when switching to a clock signal produced with an external resonator or by an external oscillator while program execution is in progress, wait until the target clock signal is stable.

6. Voltage application waveform at input pin

Waveform distortion due to input noise or a reflected wave may cause malfunction. If the input of the CMOS device stays in the area between V_{IL} (Max.) and V_{IH} (Min.) due to noise, for example, the device may malfunction. Take care to prevent chattering noise from entering the device when the input level is fixed, and also in the transition period when the input level passes through the area between V_{IL} (Max.) and V_{IH} (Min.).

7. Prohibition of access to reserved addresses

Access to reserved addresses is prohibited. The reserved addresses are provided for possible future expansion of functions. Do not access these addresses as the correct operation of the LSI is not guaranteed.

8. Differences between products

Before changing from one product to another, for example to a product with a different part number, confirm that the change will not lead to problems. The characteristics of a microprocessing unit or microcontroller unit products in the same group but having a different part number might differ in terms of internal memory capacity, layout pattern, and other factors, which can affect the ranges of electrical characteristics, such as characteristic values, operating margins, immunity to noise, and amount of radiated noise. When changing to a product with a different part number, implement a system-evaluation test for the given product.

Notice

1. Descriptions of circuits, software and other related information in this document are provided only to illustrate the operation of semiconductor products and application examples. You are fully responsible for the incorporation or any other use of the circuits, software, and information in the design of your product or system. Renesas Electronics disclaims any and all liability for any losses and damages incurred by you or third parties arising from the use of these circuits, software, or information.
2. Renesas Electronics hereby expressly disclaims any warranties against and liability for infringement or any other claims involving patents, copyrights, or other intellectual property rights of third parties, by or arising from the use of Renesas Electronics products or technical information described in this document, including but not limited to, the product data, drawings, charts, programs, algorithms, and application examples.
3. No license, express, implied or otherwise, is granted hereby under any patents, copyrights or other intellectual property rights of Renesas Electronics or others.
4. You shall be responsible for determining what licenses are required from any third parties, and obtaining such licenses for the lawful import, export, manufacture, sales, utilization, distribution or other disposal of any products incorporating Renesas Electronics products, if required.
5. You shall not alter, modify, copy, or reverse engineer any Renesas Electronics product, whether in whole or in part. Renesas Electronics disclaims any and all liability for any losses or damages incurred by you or third parties arising from such alteration, modification, copying or reverse engineering.
6. Renesas Electronics products are classified according to the following two quality grades: "Standard" and "High Quality". The intended applications for each Renesas Electronics product depends on the product's quality grade, as indicated below.

"Standard": Computers; office equipment; communications equipment; test and measurement equipment; audio and visual equipment; home electronic appliances; machine tools; personal electronic equipment; industrial robots; etc.

"High Quality": Transportation equipment (automobiles, trains, ships, etc.); traffic control (traffic lights); large-scale communication equipment; key financial terminal systems; safety control equipment; etc.

Unless expressly designated as a high reliability product or a product for harsh environments in a Renesas Electronics data sheet or other Renesas Electronics document, Renesas Electronics products are not intended or authorized for use in products or systems that may pose a direct threat to human life or bodily injury (artificial life support devices or systems; surgical implantations; etc.), or may cause serious property damage (space system; undersea repeaters; nuclear power control systems; aircraft control systems; key plant systems; military equipment; etc.). Renesas Electronics disclaims any and all liability for any damages or losses incurred by you or any third parties arising from the use of any Renesas Electronics product that is inconsistent with any Renesas Electronics data sheet, user's manual or other Renesas Electronics document.
7. No semiconductor product is absolutely secure. Notwithstanding any security measures or features that may be implemented in Renesas Electronics hardware or software products, Renesas Electronics shall have absolutely no liability arising out of any vulnerability or security breach, including but not limited to any unauthorized access to or use of a Renesas Electronics product or a system that uses a Renesas Electronics product. RENESAS ELECTRONICS DOES NOT WARRANT OR GUARANTEE THAT RENESAS ELECTRONICS PRODUCTS, OR ANY SYSTEMS CREATED USING RENESAS ELECTRONICS PRODUCTS WILL BE INVULNERABLE OR FREE FROM CORRUPTION, ATTACK, VIRUSES, INTERFERENCE, HACKING, DATA LOSS OR THEFT, OR OTHER SECURITY INTRUSION ("Vulnerability Issues"). RENESAS ELECTRONICS DISCLAIMS ANY AND ALL RESPONSIBILITY OR LIABILITY ARISING FROM OR RELATED TO ANY VULNERABILITY ISSUES. FURTHERMORE, TO THE EXTENT PERMITTED BY APPLICABLE LAW, RENESAS ELECTRONICS DISCLAIMS ANY AND ALL WARRANTIES, EXPRESS OR IMPLIED, WITH RESPECT TO THIS DOCUMENT AND ANY RELATED OR ACCOMPANYING SOFTWARE OR HARDWARE, INCLUDING BUT NOT LIMITED TO THE IMPLIED WARRANTIES OF MERCHANTABILITY, OR FITNESS FOR A PARTICULAR PURPOSE.
8. When using Renesas Electronics products, refer to the latest product information (data sheets, user's manuals, application notes, "General Notes for Handling and Using Semiconductor Devices" in the reliability handbook, etc.), and ensure that usage conditions are within the ranges specified by Renesas Electronics with respect to maximum ratings, operating power supply voltage range, heat dissipation characteristics, installation, etc. Renesas Electronics disclaims any and all liability for any malfunctions, failure or accident arising out of the use of Renesas Electronics products outside of such specified ranges.
9. Although Renesas Electronics endeavors to improve the quality and reliability of Renesas Electronics products, semiconductor products have specific characteristics, such as the occurrence of failure at a certain rate and malfunctions under certain use conditions. Unless designated as a high reliability product or a product for harsh environments in a Renesas Electronics data sheet or other Renesas Electronics document, Renesas Electronics products are not subject to radiation resistance design. You are responsible for implementing safety measures to guard against the possibility of bodily injury, injury or damage caused by fire, and/or danger to the public in the event of a failure or malfunction of Renesas Electronics products, such as safety design for hardware and software, including but not limited to redundancy, fire control and malfunction prevention, appropriate treatment for aging degradation or any other appropriate measures. Because the evaluation of microcomputer software alone is very difficult and impractical, you are responsible for evaluating the safety of the final products or systems manufactured by you.
10. Please contact a Renesas Electronics sales office for details as to environmental matters such as the environmental compatibility of each Renesas Electronics product. You are responsible for carefully and sufficiently investigating applicable laws and regulations that regulate the inclusion or use of controlled substances, including without limitation, the EU RoHS Directive, and using Renesas Electronics products in compliance with all these applicable laws and regulations. Renesas Electronics disclaims any and all liability for damages or losses occurring as a result of your noncompliance with applicable laws and regulations.
11. Renesas Electronics products and technologies shall not be used for or incorporated into any products or systems whose manufacture, use, or sale is prohibited under any applicable domestic or foreign laws or regulations. You shall comply with any applicable export control laws and regulations promulgated and administered by the governments of any countries asserting jurisdiction over the parties or transactions.
12. It is the responsibility of the buyer or distributor of Renesas Electronics products, or any other party who distributes, disposes of, or otherwise sells or transfers the product to a third party, to notify such third party in advance of the contents and conditions set forth in this document.
13. This document shall not be reprinted, reproduced or duplicated in any form, in whole or in part, without prior written consent of Renesas Electronics.
14. Please contact a Renesas Electronics sales office if you have any questions regarding the information contained in this document or Renesas Electronics products.

(Note1) "Renesas Electronics" as used in this document means Renesas Electronics Corporation and also includes its directly or indirectly controlled subsidiaries.

(Note2) "Renesas Electronics product(s)" means any product developed or manufactured by or for Renesas Electronics.

(Rev.5.0-1 October 2020)

Corporate Headquarters

TOYOSU FORESIA, 3-2-24 Toyosu,
Koto-ku, Tokyo 135-0061, Japan
www.renesas.com

Trademarks

Renesas and the Renesas logo are trademarks of Renesas Electronics Corporation. All trademarks and registered trademarks are the property of their respective owners.

Contact information

For further information on a product, technology, the most up-to-date version of a document, or your nearest sales office, please visit:
www.renesas.com/contact/.