

# Rechargeable Electric Screwdriver

## SLG47105

This application note describes how to create a Rechargeable Electric Screwdriver using HVPAK SLG47105. The device is powered by a 3.7 V Li-ion battery that is charged with a Constant Current – Constant Voltage control circuit. The device has two modes for motor direction, the Hold-to-Stop function with an extra Screw Tightening feature, and the constant voltage on the brushed DC motor with overcurrent protection.

The application note comes complete with design files which can be found in the Reference section.

## Contents

1. Terms and Definitions .....	2
2. References.....	2
3. Introduction .....	3
4. Operating Principle.....	3
5. GreenPAK Design .....	5
6. Device Testing.....	7
7. Conclusion .....	8
8. Revision History .....	8

## Figures

Figure 1. Rechargeable Electric Screwdriver .....	3
Figure 2. Block Diagram .....	3
Figure 3. Full Circuit Schematic.....	4
Figure 4. Screwdriver Motor GreenPAK Design.....	5
Figure 5. USB Charger GreenPAK Design.....	6
Figure 6. CCMP1 Vref Reg File Data .....	6
Figure 7. VDD = 3 V, duty cycle 94% .....	7
Figure 8. VDD = 3.7 V, duty cycle 75% .....	7
Figure 9. VDD = 4.2 V, duty cycle 67% .....	8

## 1. Terms and Definitions

CC	Constant Current
CV	Constant Voltage
DC	Direct Current
DFF	D Flip-Flop
HV	High voltage
LUT	Look-up Table
OSC	Oscillator

## 2. References

For related documents and software, please visit:

<https://www.renesas.com/eu/en/products/programmable-mixed-signal-asic-ip-products/greenpak-programmable-mixed-signal-products/greenpak-high-voltage-programmable-mixed-signal-matrix>

Download our free Go Configure Software Hub [1] to open the .hv file [2] and view the proposed circuit design. Use the development tools [3] to freeze the design into your own customized IC in a matter of minutes. Renesas provides a complete library of application notes [4] featuring design examples as well as explanations of features and blocks within the Renesas IC.

[1] [GreenPAK Designer Software](#), Software Download and User Guide, Renesas Electronics

[2] [AN-CM-364 Rechargeable Electric Screwdriver.hv](#), Design File, Renesas Electronics

[3] [GreenPAK Development Tools](#), GreenPAK Development Tools Webpage, Renesas Electronics

[4] [Application Notes](#), GreenPAK Application Notes Webpage, Renesas Electronics

[5] SLG47105 Datasheet, Renesas Electronics

[6] [AN-CM-363 CCCV Battery Charger](#), Application note, Renesas Electronics

### 3. Introduction

The main goal of this application is to design a Rechargeable Electric Screwdriver using the SLG47105V. The system is designed using the HV macrocells and other internal and external components to drive a 3 V DC-DC Motor as well as charging the battery.

The proposed device is a rechargeable screwdriver, powered by a 3.7 V Li-ion battery. The battery can be charged by any USB power adapter using the implemented Constant Current – Constant Voltage charging method.

The device has two modes for motor direction, the Hold-to-Stop function with an extra Screw Tightening feature, and the constant voltage on the brushed DC motor with overcurrent protection.

Only one SLG47105 allows us to create a complete device with charging control, motor driving, overcurrent protection, and other interface features.

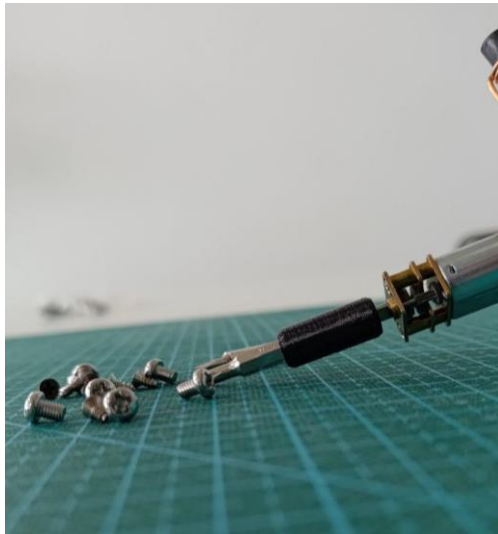


Figure 1. Rechargeable Electric Screwdriver

### 4. Operating Principle

The block diagram of the Rechargeable Electric Screwdriver is shown in [Figure 2](#).

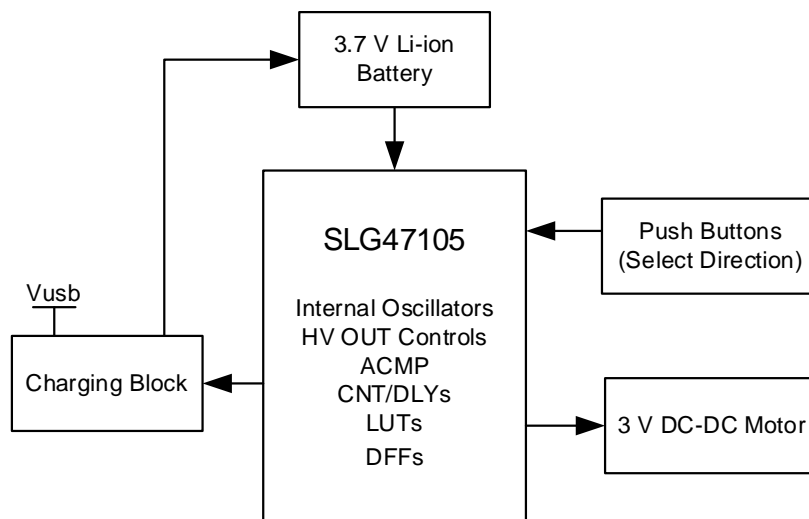


Figure 2. Block Diagram

The device is powered with a 3.7 V Li-ion Battery. When the USB charger is connected, the SLG47105 detects the voltage level and starts the appropriate stage of CC-CV charging.

R19AN0237EU0101 Rev.1.01  
Jul 24, 2024

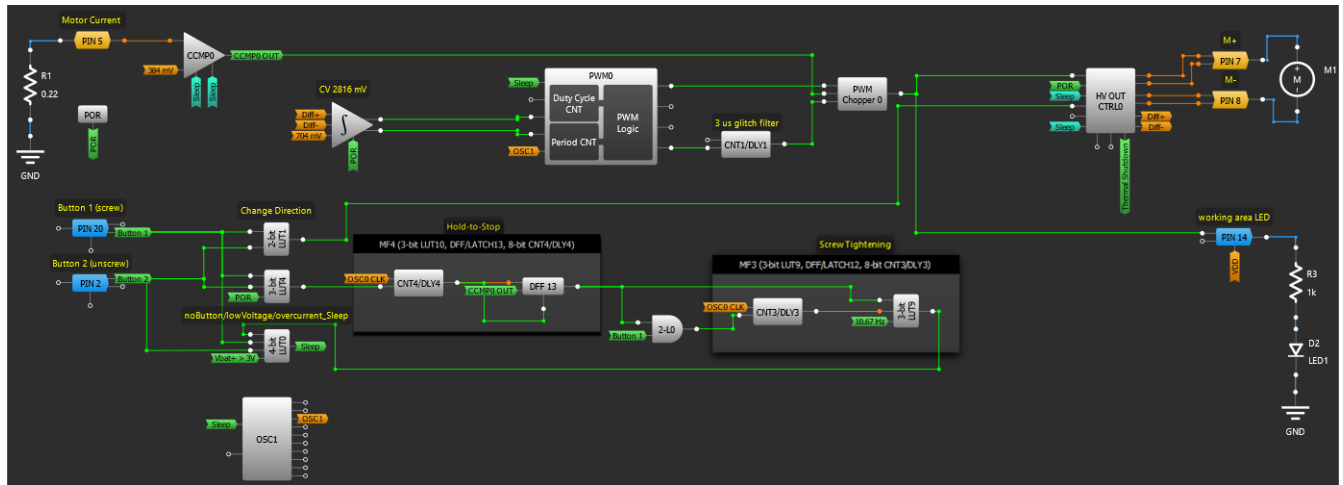


Page 4

There are also two LEDs to notify about the process. The D3 (LED1 white) indicates the screwdriver working – the motor is ON. The D2 (LED2 red) indicates the charging process: constant ON – charging, blinking - charging is complete.

## 5. GreenPAK Design

The GreenPAK Design consists of two parts Screwdriver Motor and USB Charging. The Screwdriver Motor part is shown in Figure 4.



The USB Charger part is presented in Figure 5. To get more information please see [6].

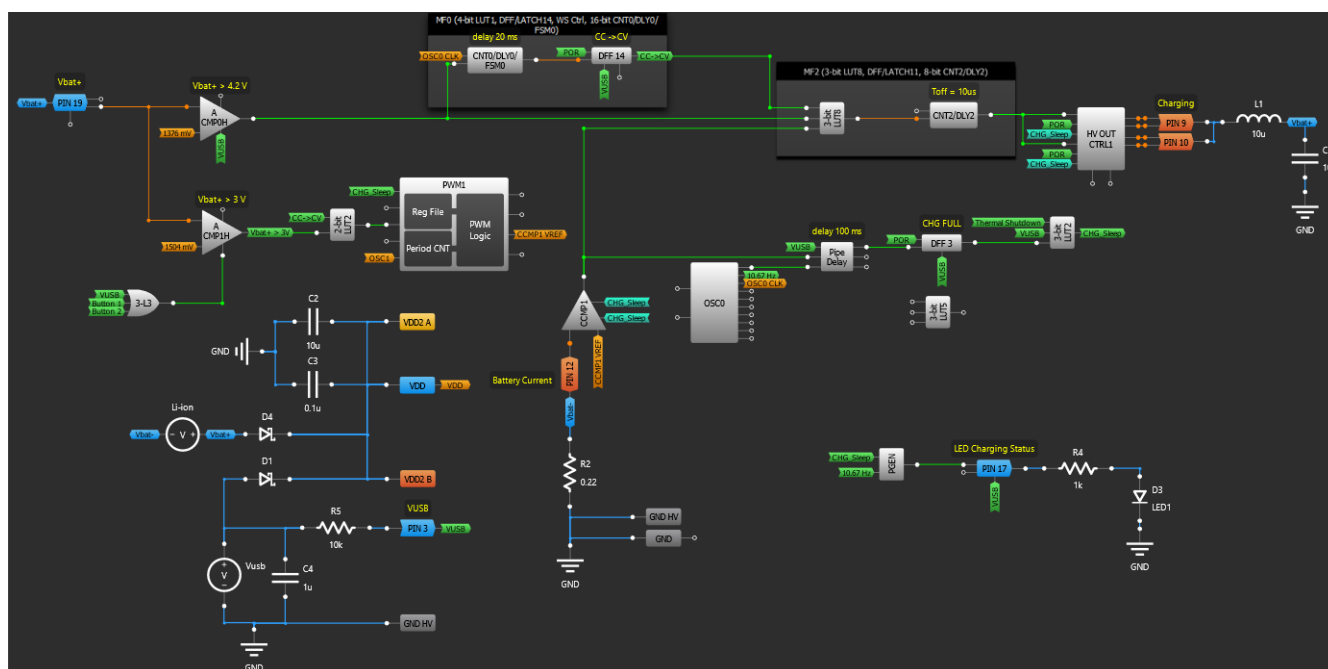


Figure 5. USB Charger GreenPAK Design

If the VUSB is connected, ACMP0 and ACMP1 check the Vbat+ voltage. If this voltage is lower than 3 V the **Pre-charge** starts. In this case, the Up/Down input of the PWM1 macrocell is LOW, which means that we start charging from 160 mV for CCMP1 Vref (Figure 6). As a result, the CCMP1 maintains the ~ 90 mA current.

Reg File Data: [\[7\]](#)

Byte #	Value	Duty Cycle	Vref
0	29	11.37 %	960 mV
1	4	1.57 %	160 mV
2	4	1.57 %	160 mV
3	4	1.57 %	160 mV
4	4	1.57 %	160 mV
5	4	1.57 %	160 mV
6	4	1.57 %	160 mV
7	4	1.57 %	160 mV

Figure 6. CCMP1 Vref Reg File Data

As soon as the ACMP1 output is HIGH (the Vbat+ is higher than 3 V), the **Constant Current** phase starts. In this case, the Up/Down input of the PWM1 is HIGH, so the CCMP1 Vref is 960 mV. The resulting current is ~ 550 mA. Note that these current limits can be changed by changing the Vref value in the Reg File or by changing the resistor R2 connected to the PIN 12 (Sense B).

This CC phase continues until the battery voltage reaches 4.2 V (ACMP0 output is HIGH). Then the CC stops and the **Constant Voltage** phase starts. In this case, the ACMP0 controls the constant voltage of 4.2 V and the CCMP1 just checks and keeps the current decreasing and lower than 90 mA until the battery is fully charged. When the battery is fully charged, the charging process stops and all corresponding blocks are in Sleep Mode -> CHG\_Sleep is HIGH.

## 6. Device Testing

The following [Figure 7](#), [Figure 8](#), and [Figure 9](#) show the signal on the motor terminal depending on VDD (Vbat).

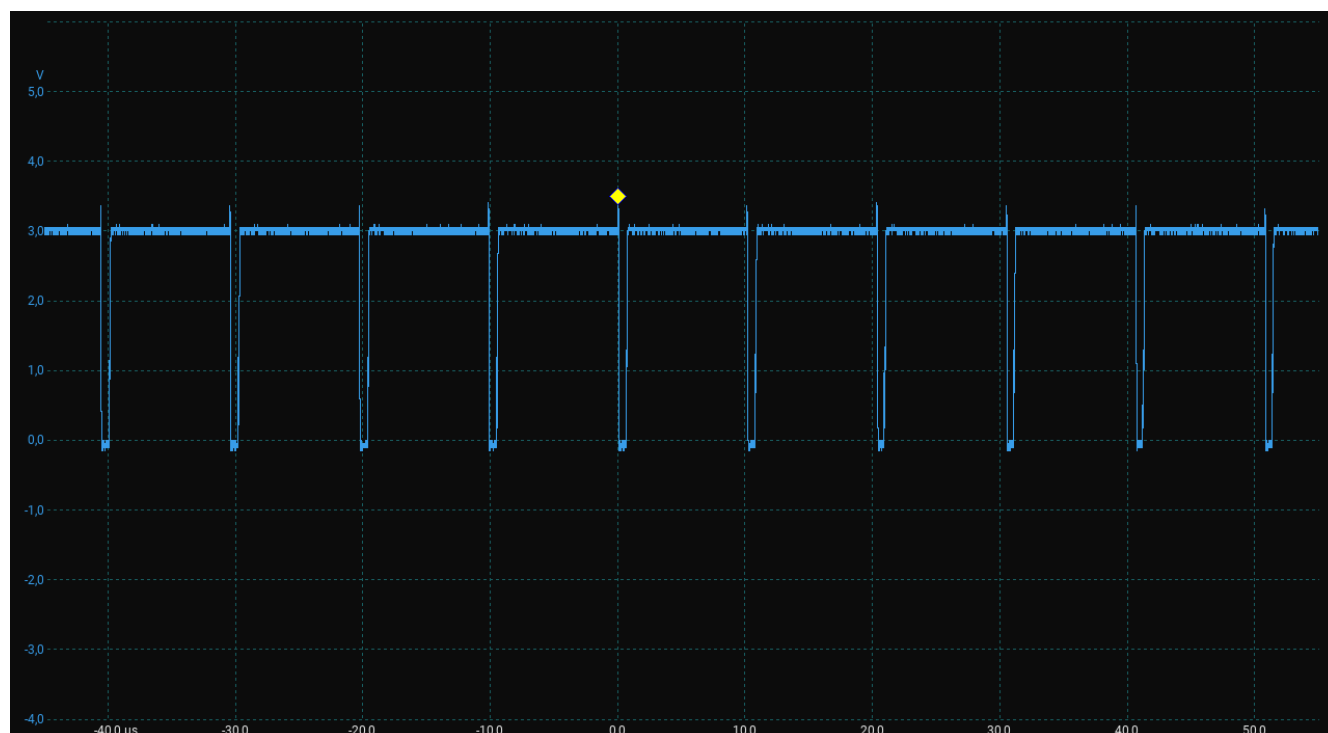


Figure 7. VDD = 3 V, duty cycle 94%

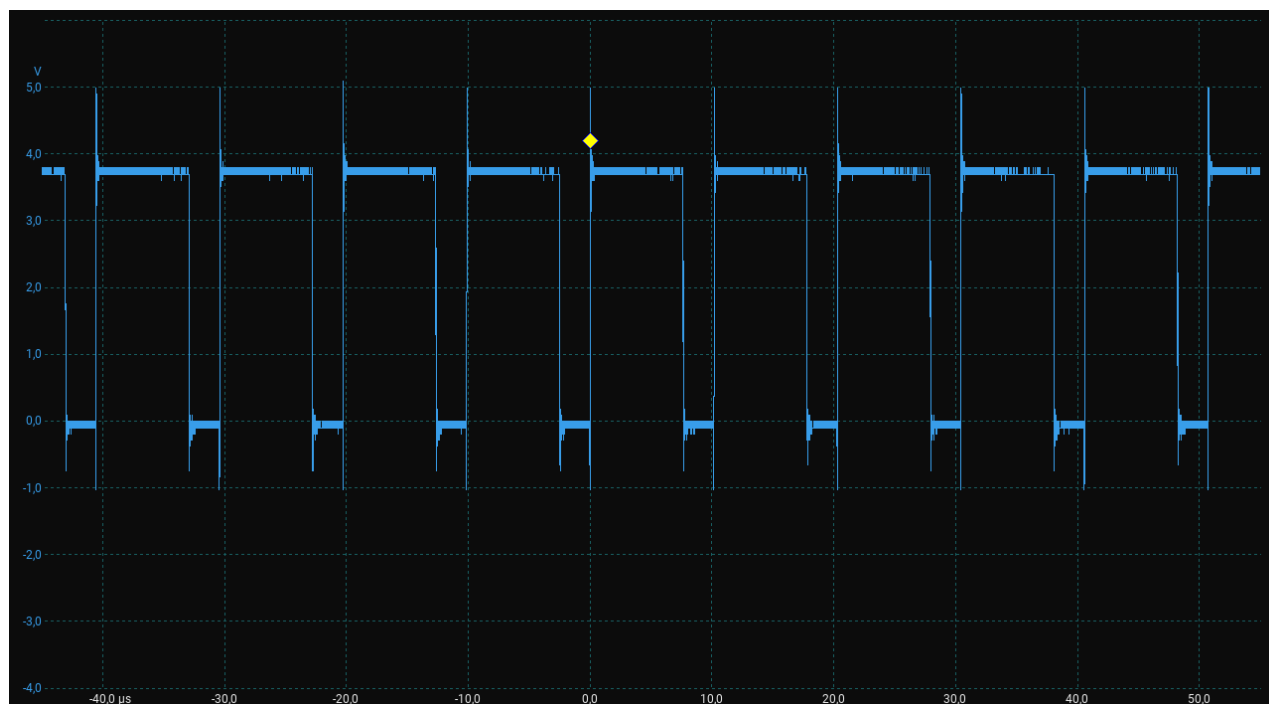


Figure 8. VDD = 3.7 V, duty cycle 75%

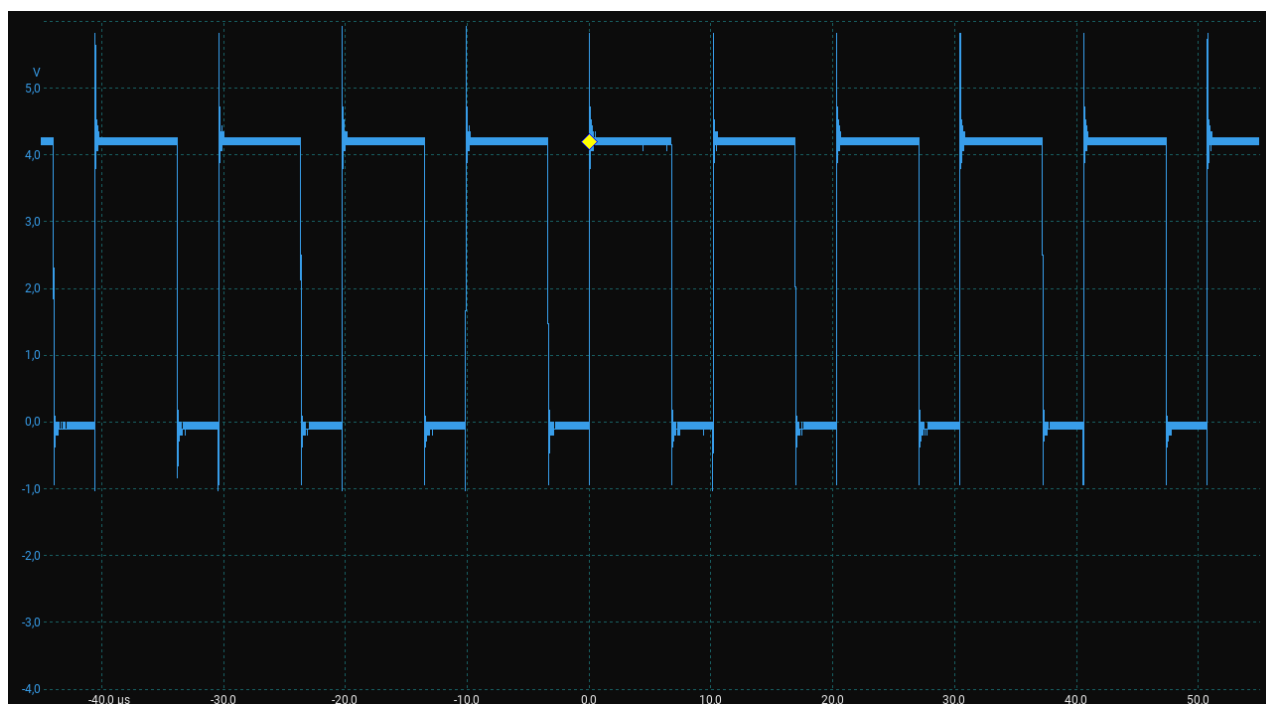


Figure 9. VDD = 4.2 V, duty cycle 67%

## 7. Conclusion

This application note describes how to configure the HVPAK to create a Rechargeable Electric Screwdriver. The results prove that the circuit works as expected, and the SLG47105 is capable of acting as the control module for the 3 V DC-DC Motor and 3.7 V Li-ion Battery charger at the same time.

In addition, the device has two modes for motor direction, the Hold-to-Stop function with an extra Screw Tightening feature, and the constant voltage on the motor.

The GreenPAK's internal resources, including the HV, oscillators, logic, and GPIOs are easy to configure to implement the desired functionality for this design.

## 8. Revision History

Revision	Date	Description
1.01	Jul 23, 2024	Added R5, C4, and D4 Updated GreenPAK Design Swapped places PIN20 and PIN3 Fixed typos Changed configuration of ACMP0H, 4-bit LUT0, and ACMP1H Added PIN19 to the design
1.00	Apr 24, 2023	Initial release



## IMPORTANT NOTICE AND DISCLAIMER

RENESAS ELECTRONICS CORPORATION AND ITS SUBSIDIARIES ("RENESAS") PROVIDES TECHNICAL SPECIFICATIONS AND RELIABILITY DATA (INCLUDING DATASHEETS), DESIGN RESOURCES (INCLUDING REFERENCE DESIGNS), APPLICATION OR OTHER DESIGN ADVICE, WEB TOOLS, SAFETY INFORMATION, AND OTHER RESOURCES "AS IS" AND WITH ALL FAULTS, AND DISCLAIMS ALL WARRANTIES, EXPRESS OR IMPLIED, INCLUDING, WITHOUT LIMITATION, ANY IMPLIED WARRANTIES OF MERCHANTABILITY, FITNESS FOR A PARTICULAR PURPOSE, OR NON-INFRINGEMENT OF THIRD-PARTY INTELLECTUAL PROPERTY RIGHTS.

These resources are intended for developers who are designing with Renesas products. You are solely responsible for (1) selecting the appropriate products for your application, (2) designing, validating, and testing your application, and (3) ensuring your application meets applicable standards, and any other safety, security, or other requirements. These resources are subject to change without notice. Renesas grants you permission to use these resources only to develop an application that uses Renesas products. Other reproduction or use of these resources is strictly prohibited. No license is granted to any other Renesas intellectual property or to any third-party intellectual property. Renesas disclaims responsibility for, and you will fully indemnify Renesas and its representatives against, any claims, damages, costs, losses, or liabilities arising from your use of these resources. Renesas' products are provided only subject to Renesas' Terms and Conditions of Sale or other applicable terms agreed to in writing. No use of any Renesas resources expands or otherwise alters any applicable warranties or warranty disclaimers for these products.

(Disclaimer Rev.1.01 Jan 2024)

### Corporate Headquarters

TOYOSU FORESIA, 3-2-24 Toyosu,  
Koto-ku, Tokyo 135-0061, Japan  
[www.renesas.com](http://www.renesas.com)

### Contact Information

For further information on a product, technology, the most up-to-date version of a document, or your nearest sales office, please visit [www.renesas.com/contact-us/](http://www.renesas.com/contact-us/).

### Trademarks

Renesas and the Renesas logo are trademarks of Renesas Electronics Corporation. All trademarks and registered trademarks are the property of their respective owners.