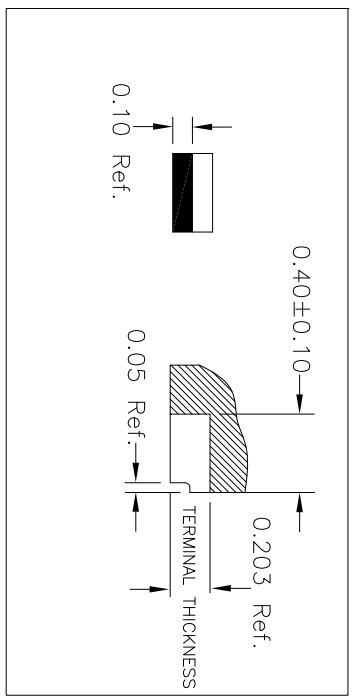
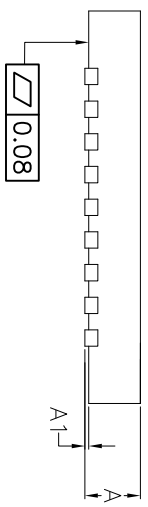
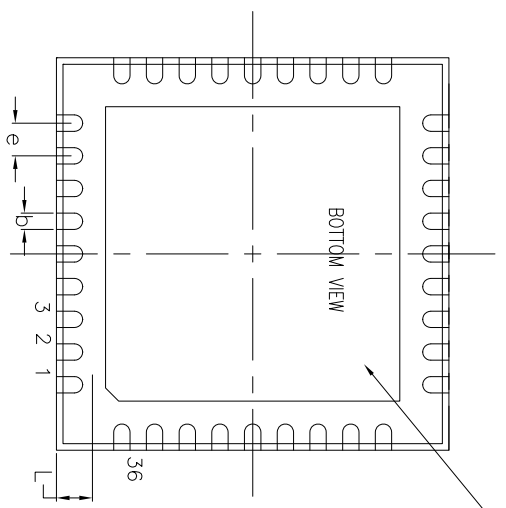
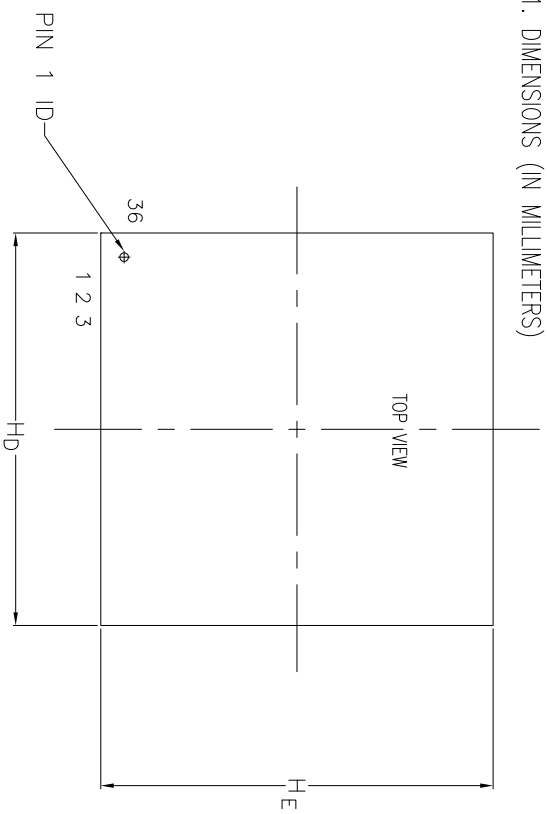


REVISIONS			
REV	DESCRIPTION	DATE	APPROVED
00	INITIAL RELEASE	2/23/16	JHUA

BASED ON JEDEC MO-220

1. DIMENSIONS (IN MILLIMETERS)



DIMENSIONS	min	nom
A	0.8	0.9
A1	0	0.05
b	0.2	0.3
e	0.5 nom	
Hd	5.9	6.1
HE	5.9	6.1
L	0.30	0.50

- 2. WEIGHT <0.1 g
- 3. PACKAGE BODY MATERIAL LOW STRESS EPOXY
- 4. LEAD MATERIAL Cu-ALLOY
- 5. LEAD FINISH SOLDER PLATING

TOLERANCES UNLESS SPECIFIED

DECIMAL	ANGULAR
±	±

APPROVALS: DATE: 2/23/16
 DRAWN: JAG
 CHECKED:

IDT 6024 Silver Creek Valley Rd
 San Jose, CA 95138
 PHONE: (408) 727-6116
 FAX: (408) 492-9874
www.idt.com

TITLE: NLG36 PACKAGE OUTLINE
 6.0 x 6.0 mm BODY, EPAD 4.5 x 4.5
 0.50 mm PITCH QFN, WETTABLE FLANK

SIZE: C DRAWING No. PSC-4648-02
 DO NOT SCALE DRAWING

REV: 00 SHEET 1 OF 1