

License Manager V2.00.00

User's Manual

Target Device

RL78 Family

RX Family

RH850 Family

All information contained in these materials, including products and product specifications, represents information on the product at the time of publication and is subject to change by Renesas Electronics Corp. without notice. Please review the latest information published by Renesas Electronics Corp. through various means, including the Renesas Electronics Corp. website (<http://www.renesas.com>).

Notice

1. Descriptions of circuits, software and other related information in this document are provided only to illustrate the operation of semiconductor products and application examples. You are fully responsible for the incorporation of these circuits, software, and information in the design of your equipment. Renesas Electronics assumes no responsibility for any losses incurred by you or third parties arising from the use of these circuits, software, or information.
2. Renesas Electronics has used reasonable care in preparing the information included in this document, but Renesas Electronics does not warrant that such information is error free. Renesas Electronics assumes no liability whatsoever for any damages incurred by you resulting from errors in or omissions from the information included herein.
3. Renesas Electronics does not assume any liability for infringement of patents, copyrights, or other intellectual property rights of third parties by or arising from the use of Renesas Electronics products or technical information described in this document. No license, express, implied or otherwise, is granted hereby under any patents, copyrights or other intellectual property rights of Renesas Electronics or others.
4. You should not alter, modify, copy, or otherwise misappropriate any Renesas Electronics product, whether in whole or in part. Renesas Electronics assumes no responsibility for any losses incurred by you or third parties arising from such alteration, modification, copy or otherwise misappropriation of Renesas Electronics product.
5. Renesas Electronics products are classified according to the following two quality grades: "Standard" and "High Quality". The recommended applications for each Renesas Electronics product depends on the product's quality grade, as indicated below.
"Standard": Computers; office equipment; communications equipment; test and measurement equipment; audio and visual equipment; home electronic appliances; machine tools; personal electronic equipment; and industrial robots etc.
"High Quality": Transportation equipment (automobiles, trains, ships, etc.); traffic control systems; anti-disaster systems; anti-crime systems; and safety equipment etc.

Renesas Electronics products are neither intended nor authorized for use in products or systems that may pose a direct threat to human life or bodily injury (artificial life support devices or systems, surgical implantations etc.), or may cause serious property damages (nuclear reactor control systems, military equipment etc.). You must check the quality grade of each Renesas Electronics product before using it in a particular application. You may not use any Renesas Electronics product for any application for which it is not intended. Renesas Electronics shall not be in any way liable for any damages or losses incurred by you or third parties arising from the use of any Renesas Electronics product for which the product is not intended by Renesas Electronics.

6. You should use the Renesas Electronics products described in this document within the range specified by Renesas Electronics, especially with respect to the maximum rating, operating supply voltage range, movement power voltage range, heat radiation characteristics, installation and other product characteristics. Renesas Electronics shall have no liability for malfunctions or damages arising out of the use of Renesas Electronics products beyond such specified ranges.
7. Although Renesas Electronics endeavors to improve the quality and reliability of its products, semiconductor products have specific characteristics such as the occurrence of failure at a certain rate and malfunctions under certain use conditions. Further, Renesas Electronics products are not subject to radiation resistance design. Please be sure to implement safety measures to guard them against the possibility of physical injury, and injury or damage caused by fire in the event of the failure of a Renesas Electronics product, such as safety design for hardware and software including but not limited to redundancy, fire control and malfunction prevention, appropriate treatment for aging degradation or any other appropriate measures. Because the evaluation of microcomputer software alone is very difficult, please evaluate the safety of the final products or systems manufactured by you.
8. Please contact a Renesas Electronics sales office for details as to environmental matters such as the environmental compatibility of each Renesas Electronics product. Please use Renesas Electronics products in compliance with all applicable laws and regulations that regulate the inclusion or use of controlled substances, including without limitation, the EU RoHS Directive. Renesas Electronics assumes no liability for damages or losses occurring as a result of your noncompliance with applicable laws and regulations.
9. Renesas Electronics products and technology may not be used for or incorporated into any products or systems whose manufacture, use, or sale is prohibited under any applicable domestic or foreign laws or regulations. You should not use Renesas Electronics products or technology described in this document for any purpose relating to military applications or use by the military, including but not limited to the development of weapons of mass destruction. When exporting the Renesas Electronics products or technology described in this document, you should comply with the applicable export control laws and regulations and follow the procedures required by such laws and regulations.
10. It is the responsibility of the buyer or distributor of Renesas Electronics products, who distributes, disposes of, or otherwise places the product with a third party, to notify such third party in advance of the contents and conditions set forth in this document, Renesas Electronics assumes no responsibility for any losses incurred by you or third parties as a result of unauthorized use of Renesas Electronics products.
11. This document may not be reproduced or duplicated in any form, in whole or in part, without prior written consent of Renesas Electronics.
12. Please contact a Renesas Electronics sales office if you have any questions regarding the information contained in this document or Renesas Electronics products, or if you have any other inquiries.

(Note 1) "Renesas Electronics" as used in this document means Renesas Electronics Corporation and also includes its majority-owned subsidiaries.

(Note 2) "Renesas Electronics product(s)" means any product developed or manufactured by or for Renesas Electronics.

How to Use This Manual

This manual describes the role of the floating license for developing applications and systems for RH850 family, RX family, and RL78 family, and provides an outline of its features.

Readers	This manual is intended for users who wish to using the IDE (CS+ or e ² studio) and design software and hardware application systems.	
Purpose	This manual is intended to give users an understanding of the floating license to use for reference in developing the hardware or software of systems using these devices.	
Organization	This manual can be broadly divided into the following units. 1.GENERAL 2.FUNCTIONS 3.MESSAGE	
How to Read This Manual	It is assumed that the readers of this manual have general knowledge of electricity, logic circuits, and microcontrollers.	
Conventions	Data significance:	<u>Higher</u> digits on the left and lower digits on the right
	Active low representation:	XXX (overscore over pin or signal name)
	Note:	Footnote for item marked with Note in the text
	Caution:	Information requiring particular attention
	Remarks:	Supplementary information
	Numeric representation:	Decimal ... XXXX
		Hexadecimal ... 0xXXXX

TABLE OF CONTENTS

1.	GENERAL	5
1.1	Introduction	5
1.2	Operating Environment	8
2.	FUNCTIONS.	10
2.1	Installing License Manager	10
2.2	Uninstalling License Manager	10
2.3	Using a License Manager	11
2.3.1	Confirming the status	11
2.3.2	Showing information on the expiration of annual licenses	14
2.3.3	Add a node locked license	15
2.3.4	Delete a node locked license	16
2.3.5	Setting up the floating license.	17
2.3.6	Acquiring a floating license	19
2.3.7	Acquiring a floating license for use in offline mode	19
2.3.8	Ending use of a floating license in offline mode	21
2.3.9	Change options.	23
2.4	Resetting When the Server Is Changed	24
3.	MESSAGE	25
3.1	Message Types	25
3.2	Internal Errors	26
3.3	Fatal Errors	26
3.4	Information	30
3.5	Choices	32
3.6	Warning	33
	Revision Record	C - 1

1. GENERAL

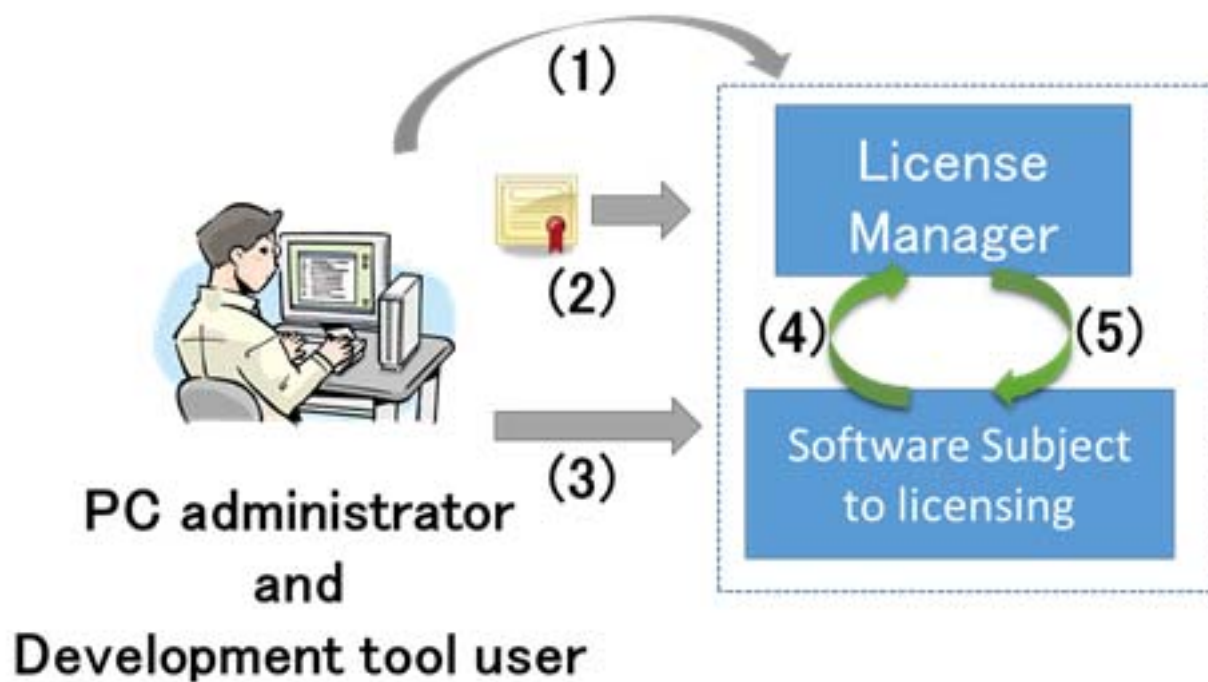
This chapter describes the outline of the license in the form of a floating license for managing the license of development environment for developing applications and systems for the microcontrollers (RH850, RX and RL78).

1.1 Introduction

The license manager provides facilities for managing node locked licenses and floating licenses which are required to use tools related to the CS+ and e² studio integrated development environments for microcontrollers from Renesas.

A node locked license is a form of license where the license manager on a client manages the software license. If a license key is registered, functionality corresponding to the license is available; e.g. the manager eliminates restrictions on the amount of code for which linkage is possible on that client.

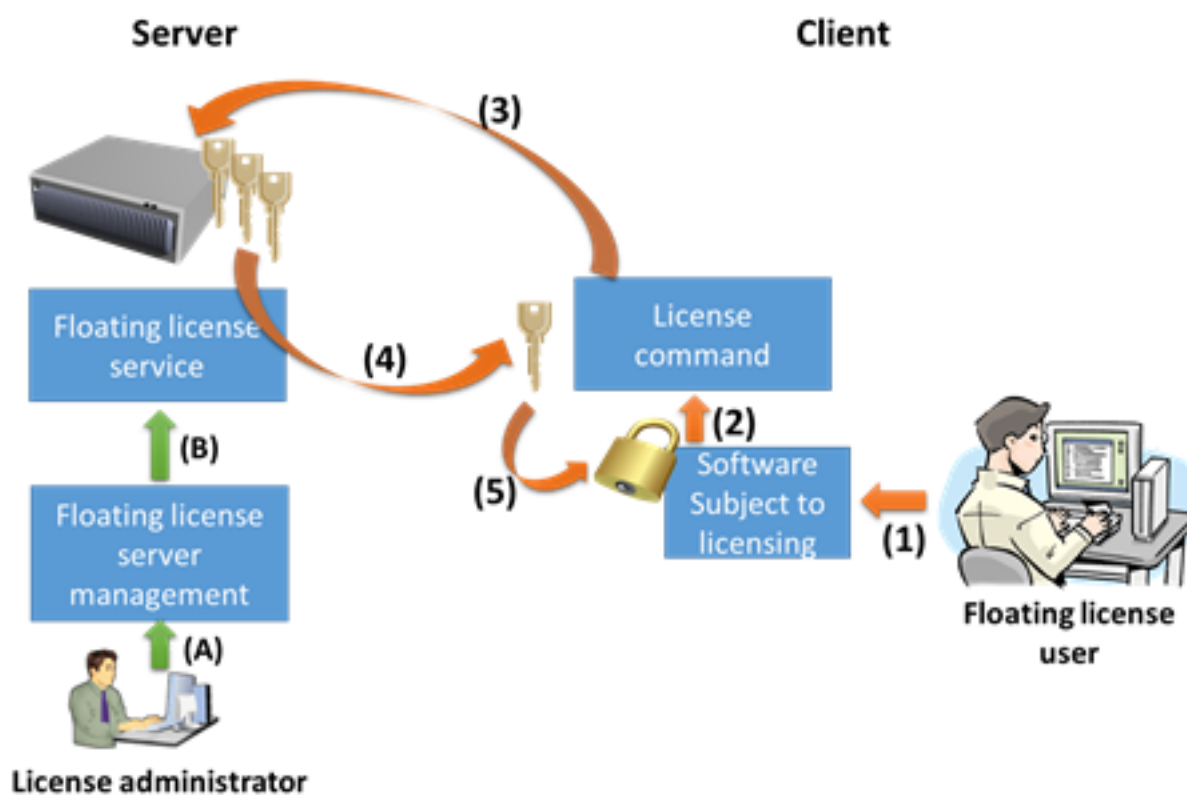
Figure 1.1 System Structure for Node Locked Licenses



- (1) Install development tool
- (2) Register license key
- (3) Launch development tool
- (4) License if confirmed
- (5) Confirmed or not

Floating licensing is a licensing approach in which a limited number of licenses for a software are managed by the server and any computer connected to the server can use the software within the number of the licenses.

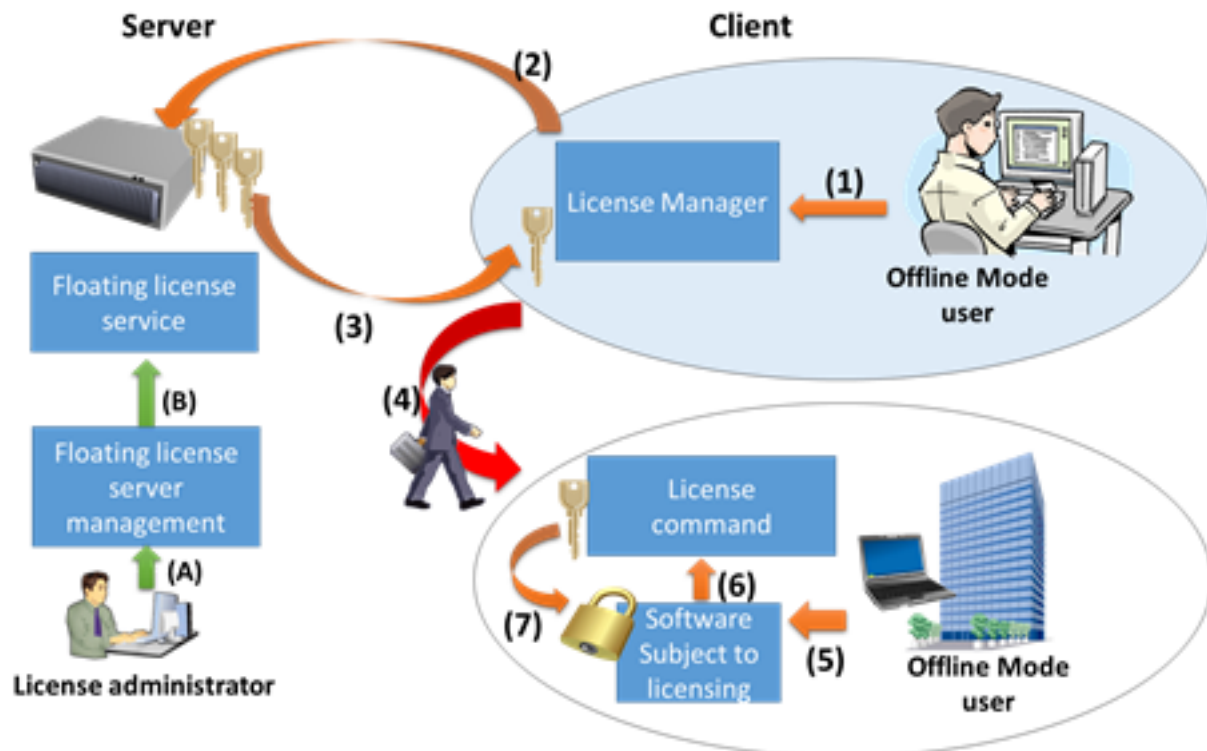
Figure 1.2 System Structure of Floating License



- (1)Launch
- (2)Request for license
- (3)Request for floating license
- (4)Floating license is granted
- (5)License is confirmed
- (A)License key is added
- (B)License is registered

A floating license cannot be used unless the computer is connected to the server. Offline mode is a mechanism that occupies the license for a certain period in order to use the license in a state disconnected from the network environment.

Figure 1.3 System Structure of Floating License (Offline Mode)



- (1) Request for floating license (offline mode)
- (2) Request for floating license (offline mode)
- (3) Floating license (offline mode) is granted
- (4) Take out
- (5) Launch
- (6) Request for license
- (7) License is confirmed
- (A) License key is added
- (B) License is registered

For both node locked and floating licenses, some licenses have no limit on the period of validity, while for others, the period is one year. Once the period of a time-limited license has expired, the development tool covered by the license cannot be used. To distinguish between the periods of validity, we denote the licenses with and without time limits as annual and permanent, respectively.

- Node Locked License (permanent)
- Node Locked License (annual)
- Floating License (permanent)
- Floating License (annual)

1.2 Operating Environment

A floating license operates in the following environment.

- Hardware
 - Processor of 1 GHz or higher
 - Main memory: Min. 1 Gbyte (Min. 2 Gbytes for 64-bit Windows), at least 2 Gbytes are recommended
 - Display: Resolution of 1024 x 768 or higher, at least 65536 colors
- OS
 - Windows Vista (32 bits and 64 bits): Business and Enterprise
 - Windows 7 (32 bits and 64 bits): Professional and Enterprise
 - Windows 8.1 (32 bits and 64 bits): Pro and Enterprise
 - Windows 10 (32 bits and 64 bits): Pro and Enterprise
- Runtime library
 - .NET Framework 4
“.NET Framework 4” is required. Cannot operate correctly in “.NET Framework 4 Client Profile”.
- Development environment
 - Node Locked License
 - CA850
 - CX
 - CA78K0
 - CA78K0R
 - CC-RL
 - CC-RX
 - CC-RH
 - Floating License
 - CC-RL V1.01.00 or later
 - CC-RX V2.03.00 or later
 - CC-RH V1.02.00 or later
- License
 - RL78,78K License Pack 1 (CA78K0R,CA78K0)
Node Locked License (permanent)
 - V850 License Pack 1 (CA850,CX)
Node Locked License (permanent)
 - RL78 License Pack 1 (CC-RL) or later
 - Standard edition Node Locked License (permanent)
 - Standard edition Node Locked License (annual)
 - Standard edition Floating License (permanent)
 - Standard edition Floating License (annual)
 - Professional edition Node Locked License (permanent)
 - Professional edition Node Locked License (annual)
 - Professional edition Floating License (permanent)
 - Professional edition Floating License (annual)
 - Upgrade edition Node Locked License (permanent)
 - RX License Pack 1 (CC-RX)
Node Locked License (permanent)
 - RX License Pack 2 Professional (CC-RX) or later
 - Standard edition Node Locked License (permanent)
 - Standard edition Node Locked License (annual)

- Standard edition Floating License (permanent)
- Standard edition Floating License (annual)
- Professional edition Node Locked License (permanent)
- Professional edition Node Locked License (annual)
- Professional edition Floating License (permanent)
- Professional edition Floating License (annual)
- Upgrade edition Node Locked License (permanent)
- RH850 License Pack 1 (CC-RH) or later
 - Standard edition Node Locked License (permanent)
 - Standard edition Node Locked License (annual)
 - Standard edition Floating License (permanent)
 - Standard edition Floating License (annual)
 - Professional edition Node Locked License (permanent)
 - Professional edition Node Locked License (annual)
 - Professional edition Floating License (permanent)
 - Professional edition Floating License (annual)
 - Upgrade edition Node Locked License (permanent)

2. FUNCTIONS

This chapter describes functions of a license manager.

2.1 Installing License Manager

Install the license manager which is included in the installer for the CS+ IDE, or with a package for a stand-alone language tool.

The preparing for installation window automatically appears. If this does not happen, double-click on "Setup.exe" in the root directory of the CD.

Caution The floating license client setup must be conducted with administrator privileges.

2.2 Uninstalling License Manager

You can uninstall the license manager using [Programs and Features] in the control panel. Select "Renesas MCU Tools License Manager" and click the [Uninstall] button.

Caution Uninstalling the floating license client must be conducted with administrator privileges.

2.3 Using a License Manager

This section describes how to use a license manager.

2.3.1 Confirming the status

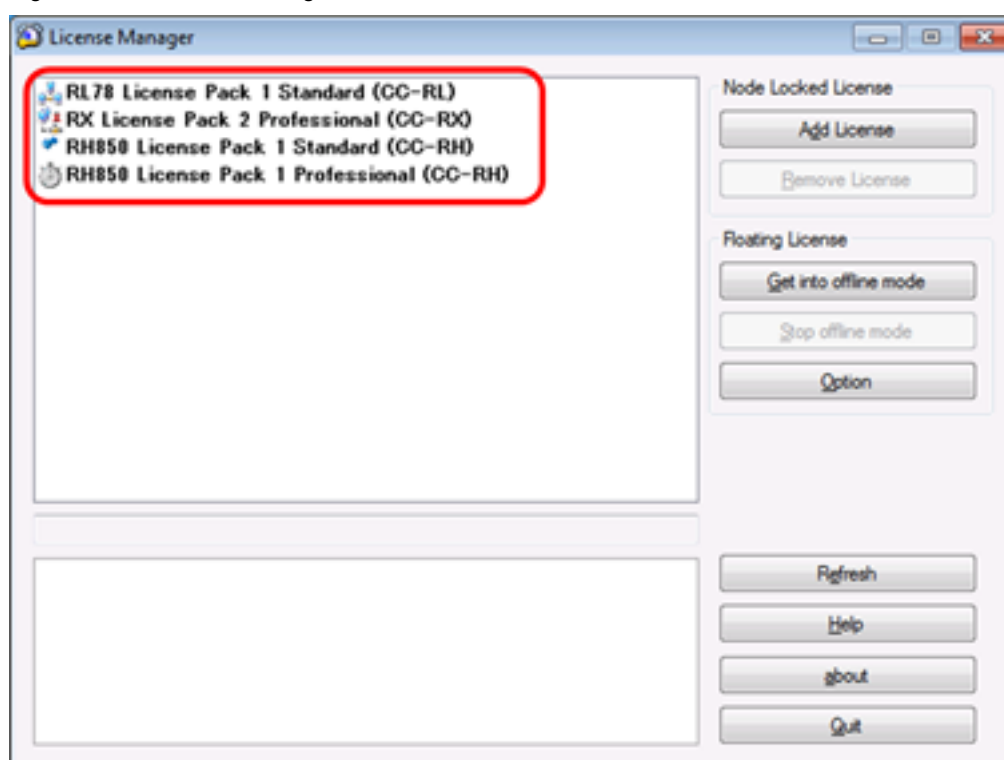
When the License Manager window opens, it displays a list of valid registered licenses in the licenses area. The License Manager window is started as follows.

- From the [Start] menu of Windows, select [Programs] -> [Renesas Electronics Utilities] -> [Renesas License Manager].





Remark In Windows 8.1, select [Renesas License Manager] on the start screen.



The License Manager window will open.

Figure 2.1 License Manager Window



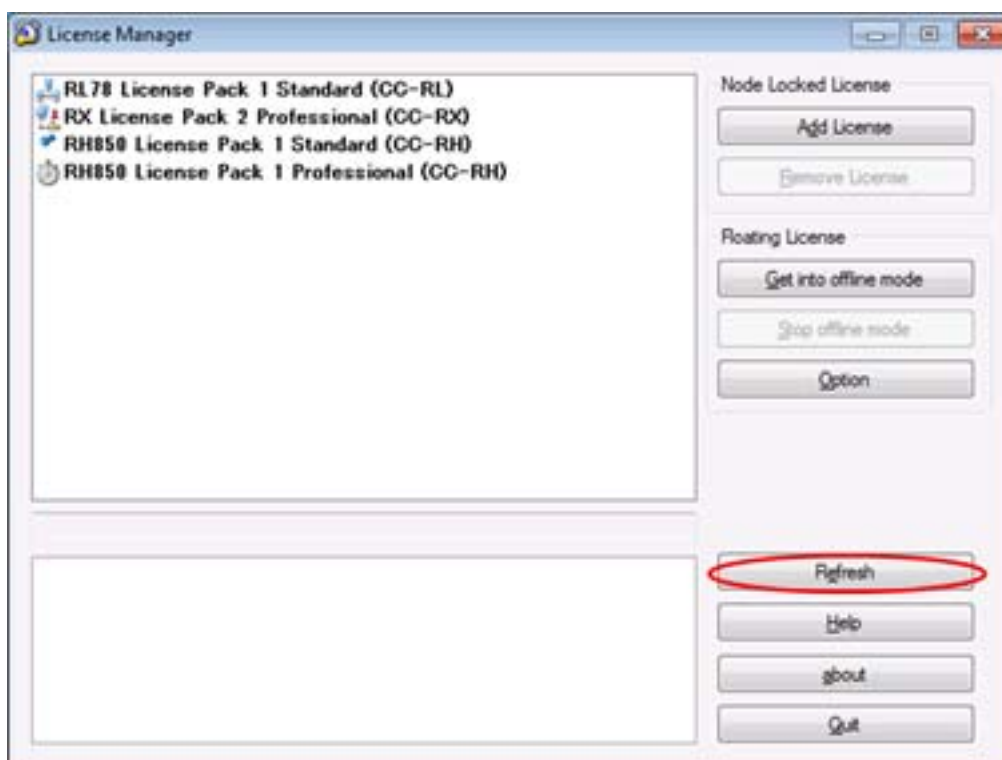
The license name is displayed by a bold font, and the license status is indicated by an icon.

	In use as a Node Locked License (permanent).
	In use as a Node Locked License (annual).
	In use as a Node Locked License (annual) (the expiration date is approaching).
	This Node Locked License (annual) is no longer available because it is out of date.

	Using as the floating license.
	Using as the offline license.

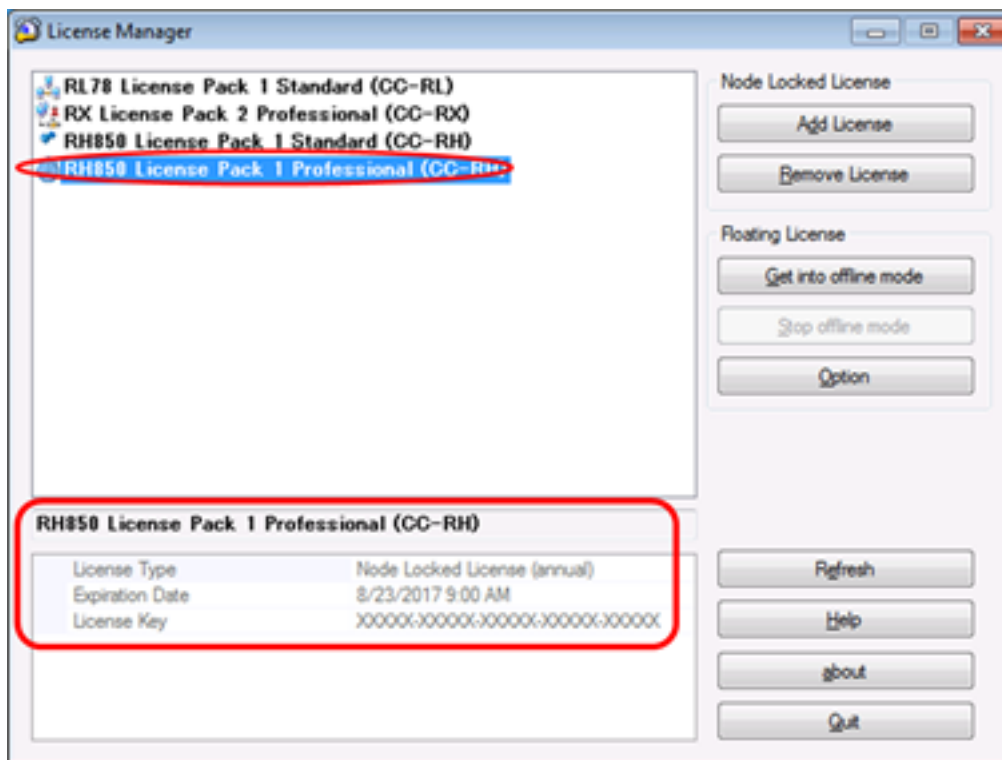
If the displayed contents of the GUI are old, click the [Refresh] button to update the displayed information.

Figure 2.2 Refresh the Displayed Information



And click the license name. The license status is displayed in the bottom part of the window.

Figure 2.3 Detailed Information for the License Status



The following functionality will be restricted if a license is not registered.

- Below are the maximum code sizes that can be developed.
 - RH850 family: 256 Kbytes
 - RX family: 128 Kbytes
 - RL78 family: 64 Kbytes (The available RAM is restricted to the internal RAM.)

There is a trial period for the first 60 days following building after the first installation of an evaluation version of a software tool.

2.3.2 Showing information on the expiration of annual licenses



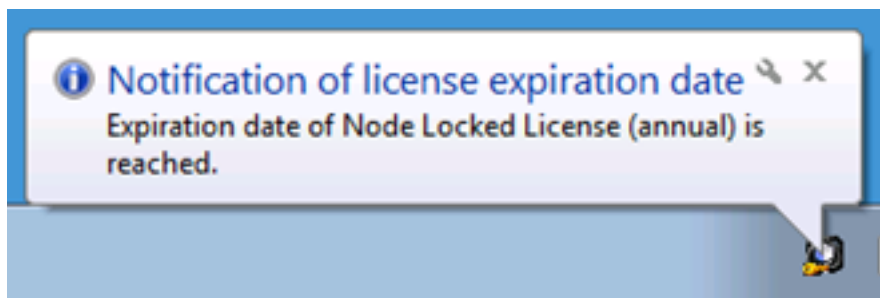
The user is informed of the approaching expiration of an annual license by display of the  icon and  balloon help.

Figure 2.4 [Expiration of an Annual License] Information Icon



Clicking on the  icon or  balloon help shows information on the license that will soon expire.

The user is informed of the approaching expiry of annual licenses at the following times: one month, two weeks, one week, six days, five days, four days, three days, two days, and one day before expiration.

However, if the date of expiration is within one of the above periods before the previous period has been indicated, the earlier notification is skipped. For example, if there are two weeks until expiration but the notification of one month until expiration has not been given, the latter notification is skipped and two weeks until expiration is indicated. If an annual license becomes out of date before the notification of one day before expiration has been displayed, the notification is that the license is already out of date.

2.3.3 Add a node locked license

In the License Manager window, click the [Add license] button, and enter a license key in the [Add following License keys] text box, then click the [Add] button to add the license.

Figure 2.5 License Manger Window

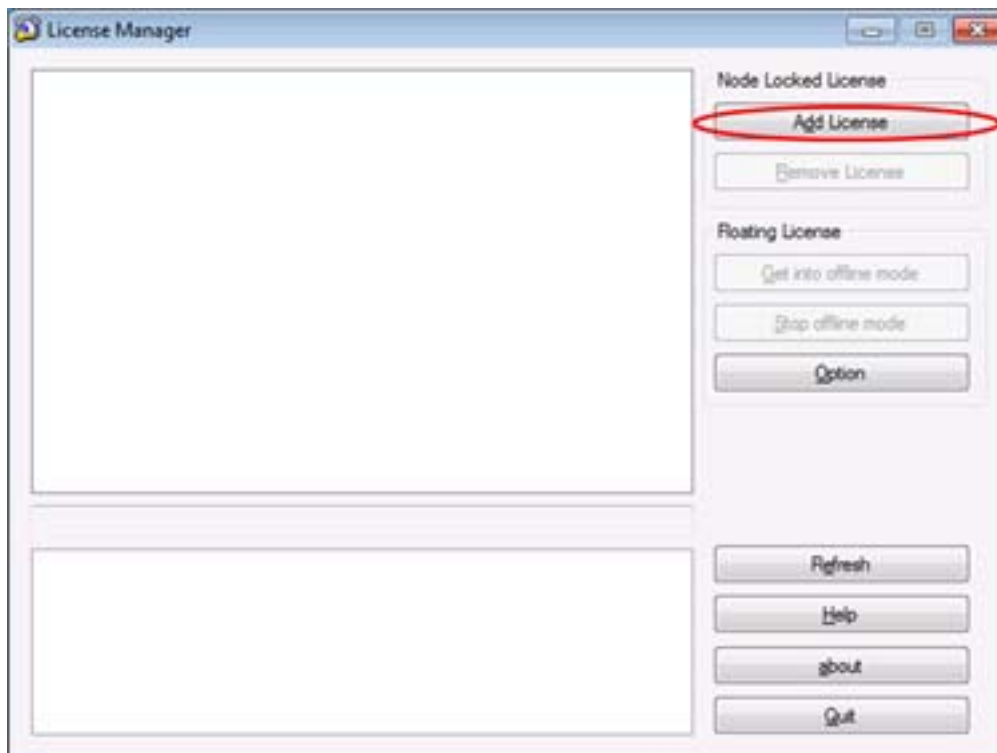
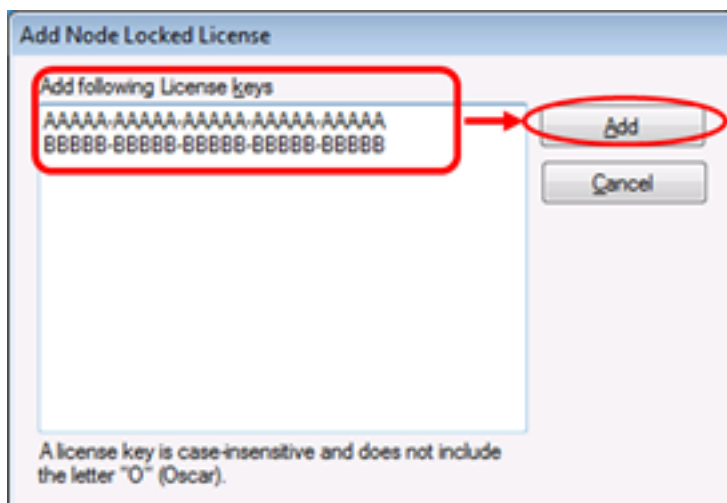


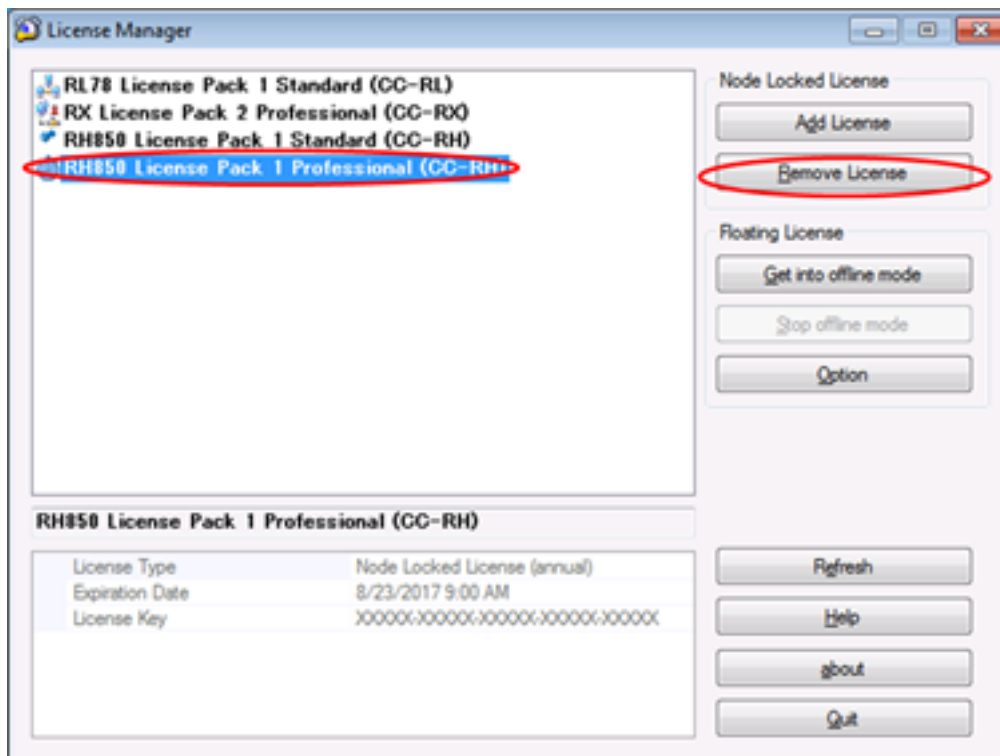
Figure 2.6 Add Node Locked License Dialog Box



2.3.4 Delete a node locked license

In the License Manager window, select the license you wish to delete from the licenses area, then click the [Remove License] button to delete the license.

Figure 2.7 License Manger Window



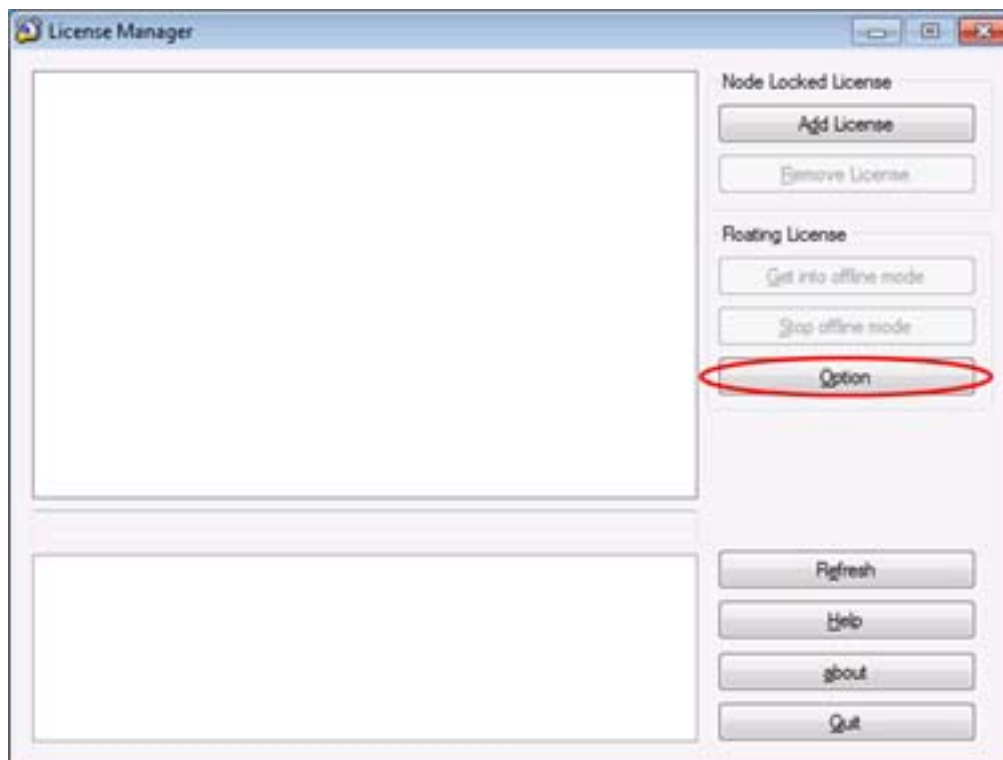
2.3.5 Setting up the floating license

The following initial settings are required to use a floating license.

Caution Set up the client after the server settings was finished.

- (1) Open the Floating License Option dialog box
In the License Manager window, click the [Option] button

Figure 2.8 Open the Floating License Option Dialog Box

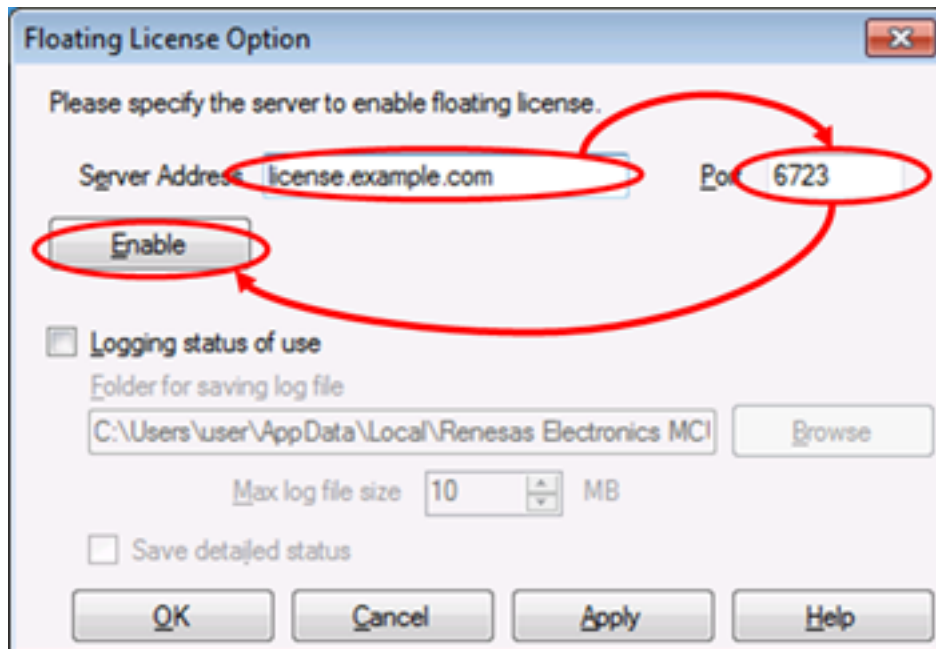


The Floating License Option dialog box will open.

- (2) Connect the license server
Enter the IP address (example: 192.168.0.1) or host name (example: license.example.com) of the license server into [Server Address], the port number specified by the license server administrator into [Port]. If you don't know, please contact the license server administrator.

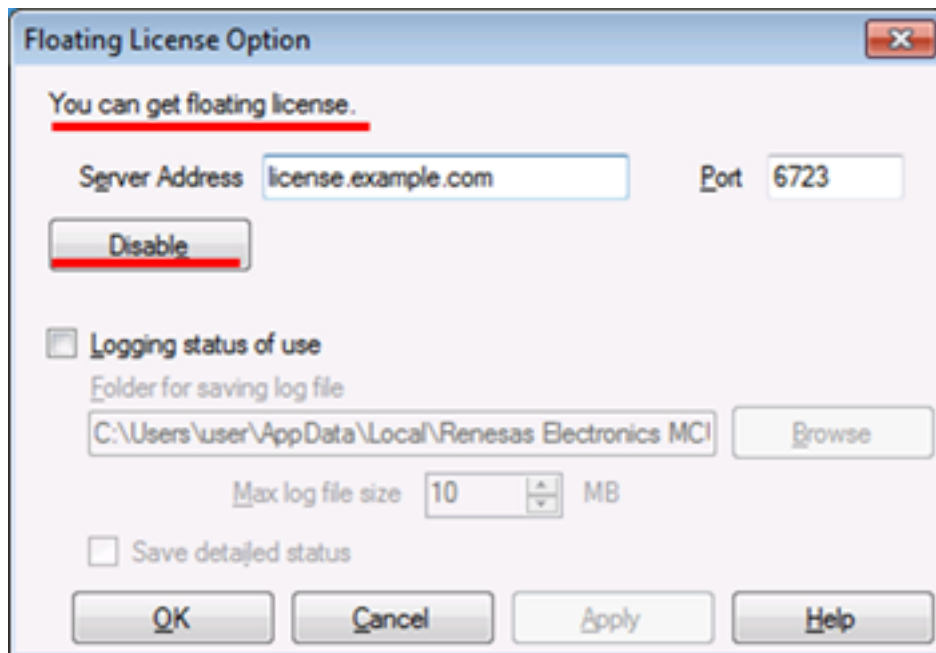
Click the [Enable] button.

Figure 2.9 Floating License Option Dialog Box (Disabled)



When connection to the license server is successful, the display changes to that shown on the below.

Figure 2.10 Floating License Option Dialog Box (Enabled)



Click the [OK] button to close the dialog box.

2.3.6 Acquiring a floating license

You don't need to take a particular action to acquire a floating license.

Starting the software subject to licensing automatically acquires a floating license. The term of validity is 30 minutes from the time that the license is acquired.

The license will be returned automatically when the term of validity expires. If the license will be required, the software subject to licensing automatically acquires a floating license again.

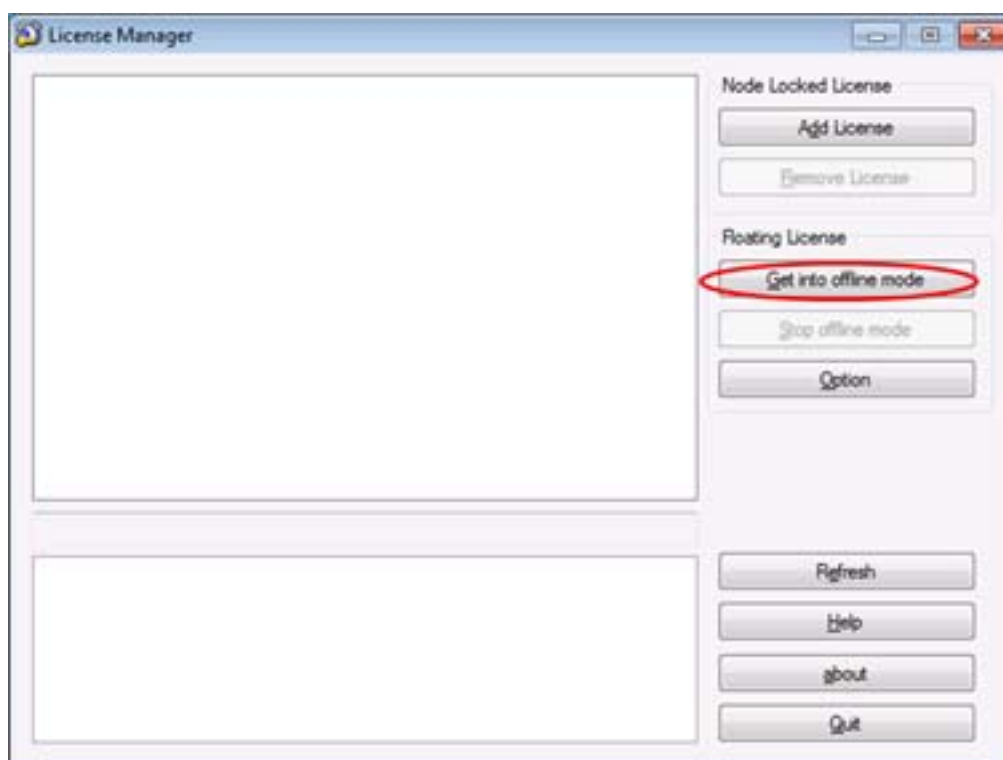
2.3.7 Acquiring a floating license for use in offline mode

A floating license cannot be used unless the computer is connected to the server. Offline mode is a mechanism that occupies the license for a certain period in order to use the license in a state disconnected from the network environment.

- (1) Open the Get into offline mode dialog box

When the client is connected to the server, click the [Get into offline mode] button in the License Manager window.

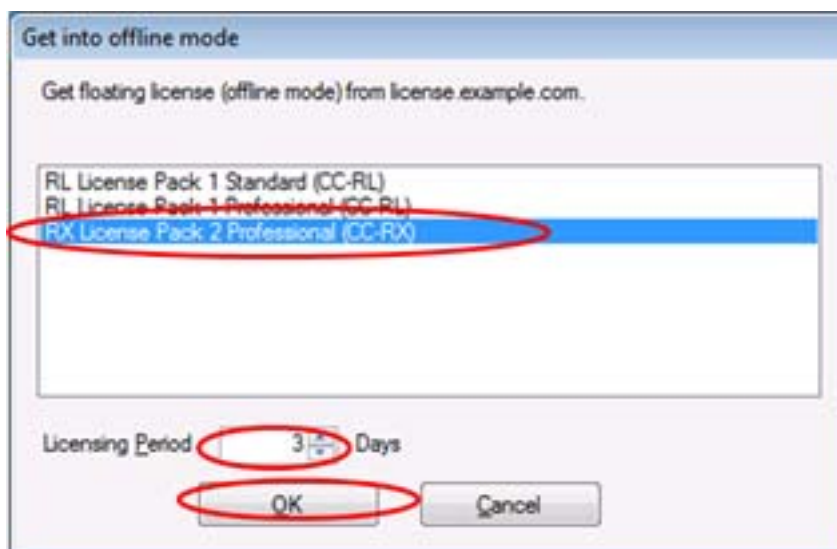
Figure 2.11 License Manager Window Before Acquiring an Floating License (Offline Mode)



The Get into offline mode dialog box will open.

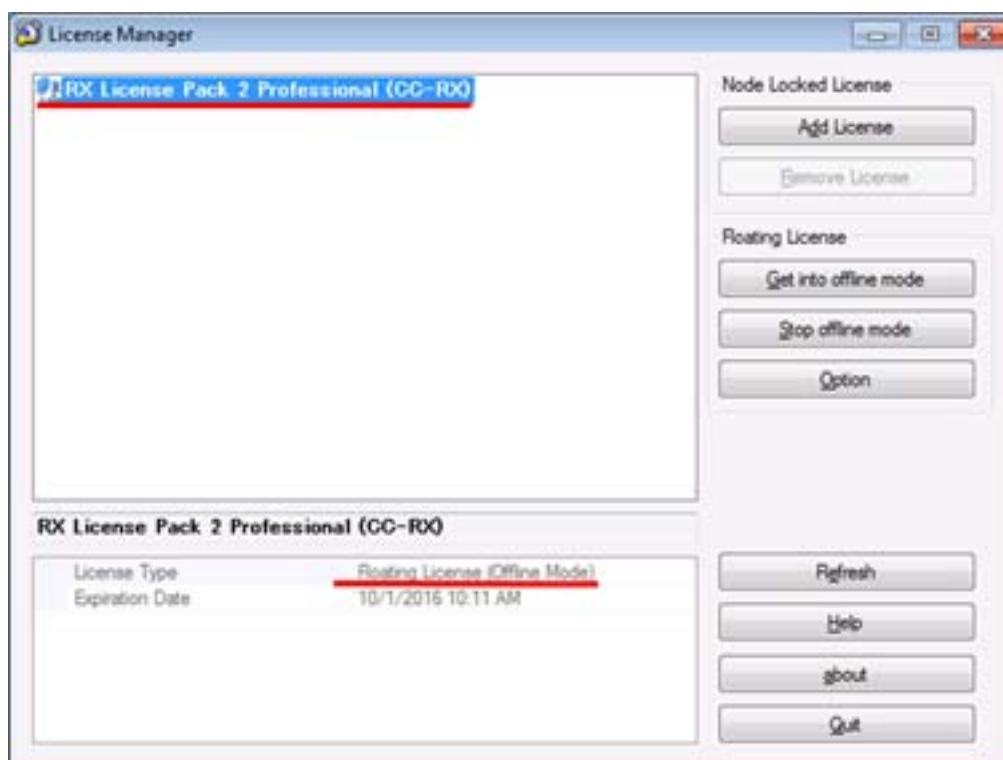
- (2) Select the license name and enter the license period
Select the license name, enter the period of use in offline mode (max. 99 days) in [Licensing Period], and click on the [OK] button.

Figure 2.12 Get into Offline Mode Dialog Box



The floating license (offline mode) is acquired from the server and the License Manager window is updated. During the valid period of the offline license, the license can be ongoingly used even in a circumstance where the license server cannot be connected.

Figure 2.13 License Manager Window after Acquiring an Offline License



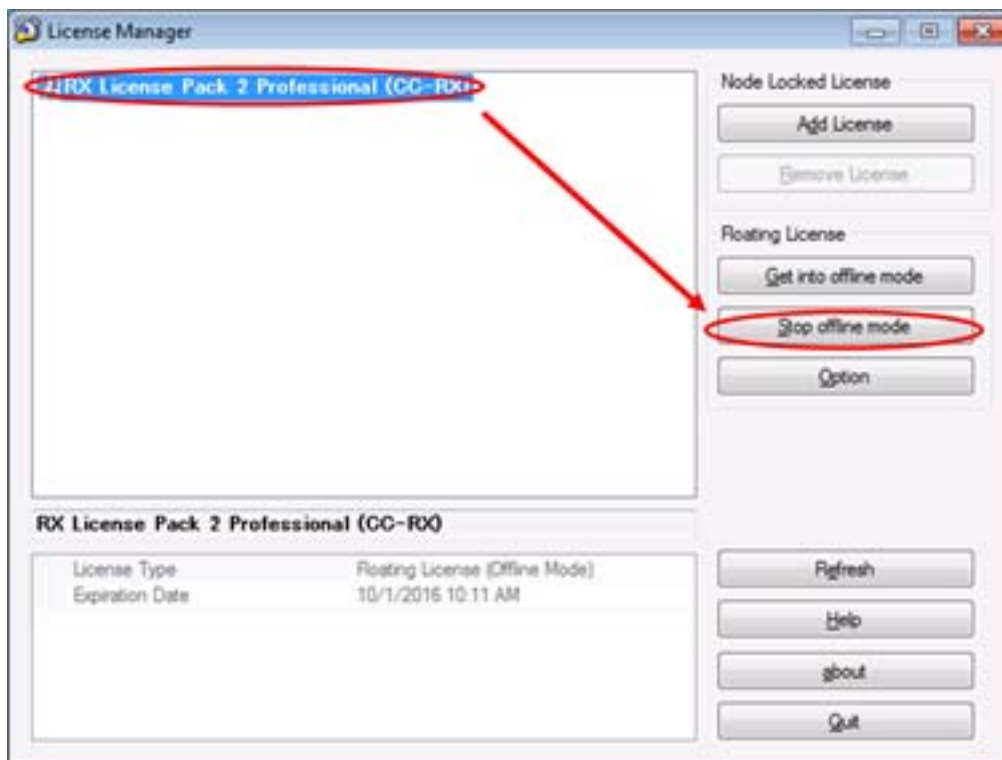
The license will be returned automatically when the license was out of date.

2.3.8 Ending use of a floating license in offline mode

Exit from offline mode by releasing the acquired floating license (for use in offline mode) prior to expiry of the period of use.

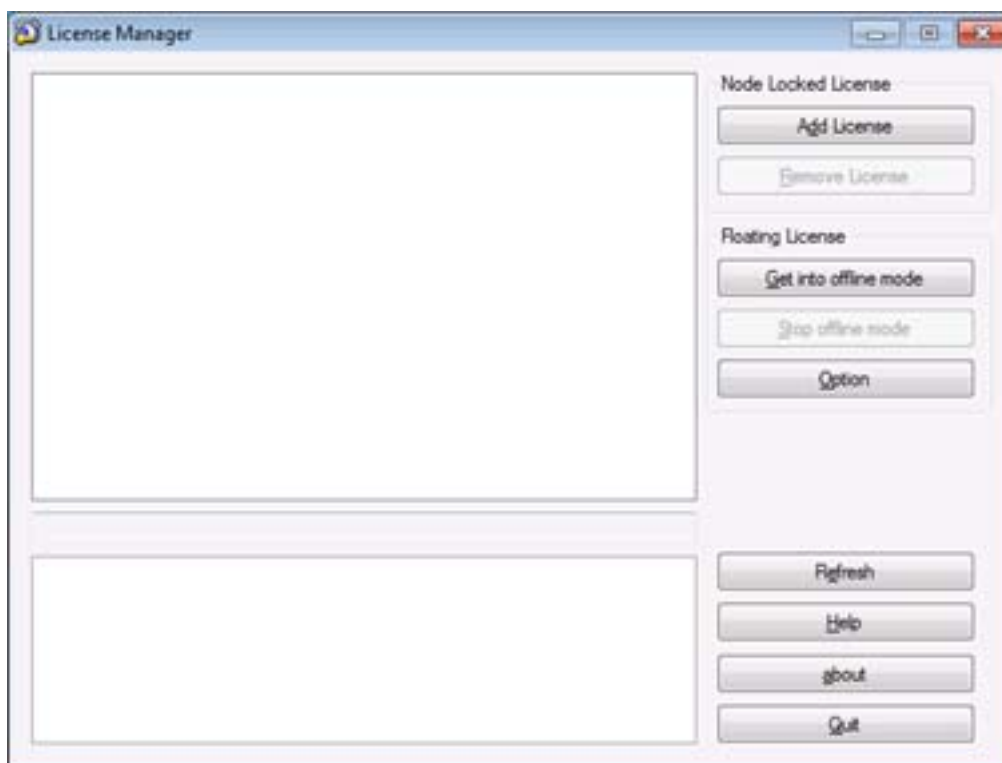
When the client is connected to the server, click the license name and the [Stop offline mode] button in the License Manager window.

Figure 2.14 License Manager Window Before Releasing an Floating License (Offline Mode)



An floating license (offline mode) is returned to the server, and the displayed information in License Manager window is updated.

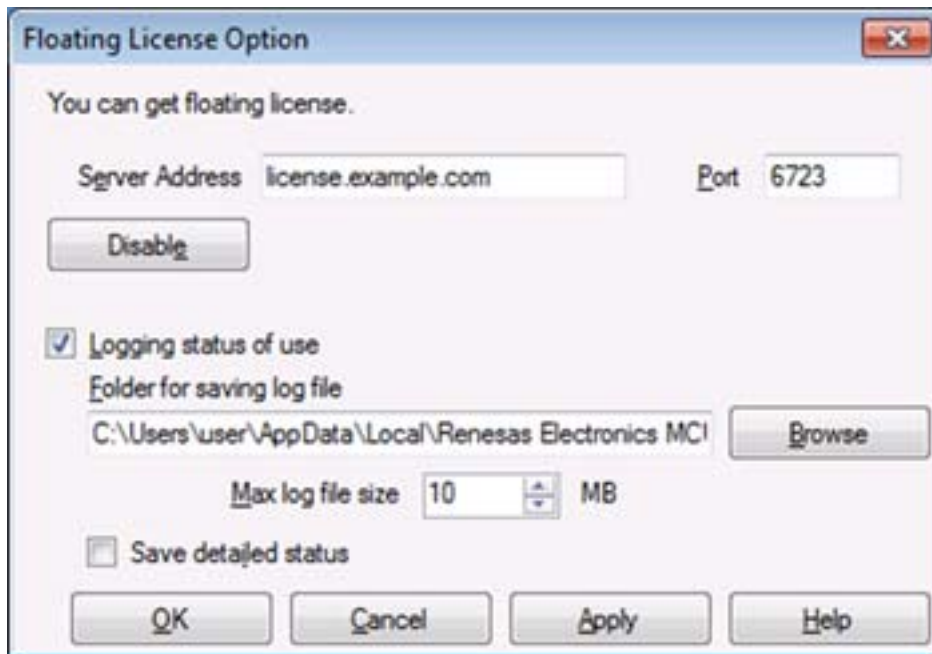
Figure 2.15 License Manager Window After Releasing an Floating License (Offline Mode)



2.3.9 Change options

Below is the description of other options of the floating license client.
In the License Manager window, click the [Option] button.
The Floating License Option dialog box will open.

Figure 2.16 Floating License Option Dialog Box



In this dialog box, the following options can be changed.

- [Logging status of use] checkbox
If this checkbox is selected, the states of usage of the licenses are recorded in a log file. If this checkbox is not selected, a log file is not saved.
- [Folder for saving log file] text box
Specifies the path for the folder in which the log files are to be saved. If the [Browse] button is clicked, the folder can be specified in the [Browse for folder] dialog box.
Logs are recorded with the numerical part of the file name changed for every 3 Mbytes with a file name of "FloatingLicense.xxx.log" (xxx is a 3-digit numerical value).
- [Max log file size] spin box
Specifies the maximum size of log files. When recording a log immediately after the maximum size has been reached, the oldest log file is deleted to keep the file size within the size of this setting.
- [Save detailed status] checkbox
If this checkbox is selected, details of the internal operation of the programs are also recorded. If this checkbox is not selected, only the requests from clients and the responses are recorded.

2.4 Resetting When the Server Is Changed

When the server has been changed due to a failure or replacement, enter the new server's [Server Address] and [Port] in the Floating License Option dialog box. After the settings have been changed, all existing licenses are revoked.

3. MESSAGE

This chapter describes internal error messages, fatal error messages, abort error messages, information messages, choice messages and warning messages that Floating License outputs.

The message is output to the Message dialog box or log file, etc...

3.1 Message Types

The message types (1 alphabetic character) when Floating License is operated are as follows.

Table 3.1 Message Type

Message Type		Description
C	Internal error	Processing terminated (suspended) due to internal error.
E	Fatal error	Processing terminated (suspended) due to fatal error.
M	Information	Informational message. Check the message and continue the process.
Q	Choice	This type of message is displayed when a choice is necessary in order to carry on with the next operation. It performs the selected action.
W	Warning	Warning message. Check the message and continue the process.

3.2 Internal Errors

Table 3.2 Internal Errors

C0171000	[Message]	An internal error occurred. Failed to get a license. XXX
C0171001	[Message]	An internal error occurred. Failed to send license request. XXX
C0171002	[Message]	An internal error occurred. Failed to send license request.
C0171003	[Message]	An internal error occurred. Failed to respond to a license request. XXX
C0190000	[Message]	Specified device is invalid.
C0190001	[Message]	XXX is empty.
C0190002	[Message]	XXX is too large.
C0190003	[Message]	XXX is too small.

3.3 Fatal Errors

Table 3.3 Fatal Errors

E0172000	[Message]	Getting a license is timed out.
E0172001	[Message]	Command-line option is invalid.
E0172002	[Message]	Failed to load license file.
E0172003	[Message]	Failed to load option file. XXX
E0172004	[Message]	Failed to load option file. XXX
E0172005	[Message]	Failed to save option file. XXX
E0172006	[Message]	Failed to save option file. XXX
E0172007	[Message]	Failed to load license information. XXX
E0172008	[Message]	Server address or port settings is invalid. XXX
E0172009	[Message]	Failed to save license information. XXX
E0172010	[Message]	Server address or port settings is invalid. XXX
	[Action by User]	Check [Server Address] and [Port] in the option dialog box.

E0172011	[Message]	Failed to receive response from license server. XXX
	[Action by User]	Check [Server Address] and [Port] in the option dialog box.
E0172012	[Message]	Failed to save CSV file. XXX
E0172013	[Message]	No log file in log folder.
E0172020	[Message]	Response from license server is invalid.
	[Action by User]	Check [Server Address] and [Port] in the option dialog box.
E0172021	[Message]	Response from license server is invalid.
	[Action by User]	Check [Server Address] and [Port] in the option dialog box.
E0172022	[Message]	No available license in license server.
E0172023	[Message]	No available license in license server. But upper level license is available.
E0172024	[Message]	License server respond invalid server.
	[Action by User]	Disable the floating license in the option dialog box and enable it again.
E0172025	[Message]	License server respond invalid client.
	[Action by User]	Disable the floating license in the option dialog box and enable it again.
E0172026	[Message]	Clock gap between server and client is too large.
	[Action by User]	Check the client PC's clock. If the clock is correct, ask the floating license server administrator to check the server PC's clock.
E0172027	[Message]	License server respond unknown license.
	[Action by User]	The licence server version may be old. Ask the floating license server administrator to check the version of the floating license.
E0172028	[Message]	License is out of date.
E0172040	[Message]	Failed to connect license server. License server respond XXX.
	[Action by User]	Check [Server Address] and [Port] in the option dialog box.
E0172041	[Message]	A connection with the server has timed out.
	[Action by User]	<ul style="list-style-type: none"> - Check [Server Address] and [Port] in the option dialog box. Ask the floating license server administrator to check that the service is running. - A request may be blocked by the server PC's firewall. Ask the floating license server administrator to check that the client request is allowed. - A request may be blocked by the client PC's personal firewall or other security software. Allow to conduct http and https communication.

E0172042	[Message]	A connection with the server could not be established. Cannot find server or DNS error.
	[Action by User]	Check [Server Address] in the option dialog box. If this does not resolve the problem, please specify [Server Address] by the IP address.
E0172043	[Message]	Failed to connect license server.
	[Action by User]	Check [Server Address] and [Port] in the option dialog box. If this does not resolve the problem, ask the floating license server administrator to check that the service is running.
E0172044	[Message]	A connection with the server was denied.
	[Action by User]	Check [Server Address] and [Port] in the option dialog box.
E0172045	[Message]	The server returned an error (XXX).
	[Action by User]	Check [Server Address] and [Port] in the option dialog box.
E0172046	[Message]	A connection with the proxy server could not be established. Cannot find server or DNS error.
	[Action by User]	Check [Internet Option] in the control panel to bypass a proxy server. Ask your network administrator about proxy settings.
E0172047	[Message]	A connection with the proxy server could not be established.
	[Action by User]	Check [Internet Option] in the control panel to bypass a proxy server. Ask your network administrator about proxy settings.
E0174010	[Message]	Failed to load option file. XXX
E0174011	[Message]	Failed to save option file. XXX
E0174012	[Message]	Failed to load license information. XXX
E0174013	[Message]	Failed to save license information. XXX
E0174014	[Message]	Failed to start license service. XXX
E0174015	[Message]	Failed to receive request from client. XXX
E0174016	[Message]	Client request is invalid.
E0174017	[Message]	No available license.
E0174018	[Message]	No available license. But upper level license is available.
E0174019	[Message]	A request is send to invalid server.
E0174020	[Message]	A request is send from unknown client.
E0174021	[Message]	Clock gap between server and client is too large.
E0174022	[Message]	A request is required unknown license.
E0174023	[Message]	License is out of date.

E0174100	[Message]	This license key is invalid. XXX
E0174101	[Message]	This license key is already registered. XXX
E0174102	[Message]	Can not delete the license in use. XXX
E0180000	[Message]	This license key is invalid.
E0180001	[Message]	XXX This license key is already registered.
E0182000	[Message]	Could not write the license information to XXX.
E0190000	[Message]	Failed to start License Manager.
E0190001	[Message]	Failed to start License Manager. Can not find the folder to store the license information.

3.4 Information

Table 3.4 Information

M0190000	[Message]	Failed to read license information. The file is broken. Please re-enter license keys.
M0191000	[Message]	Critical Error : XXX
M0191100	[Message]	Critical Error : XXX
M0191200	[Message]	Error : XXX
M0191300	[Message]	Error : XXX
M0191400	[Message]	Warning : XXX
M0191500	[Message]	Warning : XXX
M0191600	[Message]	Required license : XXX
M0191601	[Message]	Local license found.
M0191602	[Message]	Needs renewal.
M0191603	[Message]	Expired.
M0191604	[Message]	Invalid.
M0191605	[Message]	Released.
M0191606	[Message]	Upper level licesne : XXX
M0191607	[Message]	Get new licesne : XXX
M0191608	[Message]	Supported : XXX licenses
M0191700	[Message]	Request : XXX
M0191701	[Message]	Add client : XXX
M0191702	[Message]	Delete client : XXX
M0191703	[Message]	Client unknown.
M0191704	[Message]	Server id is invalid.
M0191705	[Message]	Target license is empty.
M0191706	[Message]	Upper level license is available
M0191707	[Message]	Assigned license (XXX/XXX) : XXX
M0191708	[Message]	Expired license : (XXX/XXX) : XXX
M0191709	[Message]	Released license : (XXX/XXX) : XXX
M0191800	[Message]	Command : XXX
M0191801	[Message]	Getting license : XXX
M0191802	[Message]	Connecting : XXX
M0191803	[Message]	Getting upper level license : XXX
M0191804	[Message]	Getting supported licenses : XXX
M0191805	[Message]	Getting license as offline mode : XXX
M0191806	[Message]	Releasing license : XXX
M0191900	[Message]	Starting service.

M0191901	[Message]	Starting HTTP listener.
M0191902	[Message]	Received HTTP request.
M0191903	[Message]	Received next request.
M0191904	[Message]	Getting license list.
M0191950	[Message]	Stop service.
M0191951	[Message]	Stop HTTP listener.
M0191952	[Message]	Bad HTTP request.
M0191953	[Message]	Unknown request.
M0191954	[Message]	Unkown client.
M0191955	[Message]	Invalid server ID.
M0191956	[Message]	Invalid : XXX
M0191957	[Message]	Released : XXX

3.5 Choices

Table 3.5 Choices

Q0174110	[Message]	This function should be used when a client cannot release a license because there was trouble in the client's PC. Normally, a license should be released from the client. Do you still want to continue?
----------	-----------	--

3.6 Warning

Table 3.6 Warning

W0190002	[Message]	Failed to read license information from XXX. The file is broken.
----------	-----------	--

Revision Record

Rev.	Date	Description	
		Page	Summary
1.00	Dec 01, 2016	-	First Edition issued

License Manager V2.00.00 User's Manual:

Publication Date: Rev.1.00 Dec 01, 2016
Published by: Renesas Electronics Corporation



SALES OFFICES

Renesas Electronics Corporation

<http://www.renesas.com>

Refer to "<http://www.renesas.com/>" for the latest and detailed information.

Renesas Electronics America Inc.

2801 Scott Boulevard Santa Clara, CA 95050-2549, U.S.A.
Tel: +1-408-588-6000, Fax: +1-408-588-6130

Renesas Electronics Canada Limited

9251 Yonge Street, Suite 8309 Richmond Hill, Ontario Canada L4C 9T3
Tel: +1-905-237-2004

Renesas Electronics Europe Limited

Dukes Meadow, Millboard Road, Bourne End, Buckinghamshire, SL8 5FH, U.K
Tel: +44-1628-585-100, Fax: +44-1628-585-900

Renesas Electronics Europe GmbH

Arcadiastrasse 10, 40472 Düsseldorf, Germany
Tel: +49-211-6503-0, Fax: +49-211-6503-1327

Renesas Electronics (China) Co., Ltd.

Room 1709, Quantum Plaza, No.27 ZhiChunLu Haidian District, Beijing 100191, P.R.China
Tel: +86-10-8235-1155, Fax: +86-10-8235-7679

Renesas Electronics (Shanghai) Co., Ltd.

Unit 301, Tower A, Central Towers, 555 Langao Road, Putuo District, Shanghai, P. R. China 200333
Tel: +86-21-2226-0888, Fax: +86-21-2226-0999

Renesas Electronics Hong Kong Limited

Unit 1601-1611, 16/F., Tower 2, Grand Century Place, 193 Prince Edward Road West, Mongkok, Kowloon, Hong Kong
Tel: +852-2265-6688, Fax: +852 2886-9022

Renesas Electronics Taiwan Co., Ltd.

13F, No. 363, Fu Shing North Road, Taipei 10543, Taiwan
Tel: +886-2-8175-9600, Fax: +886 2-8175-9670

Renesas Electronics Singapore Pte. Ltd.

80 Bendemeer Road, Unit #06-02 Hyflux Innovation Centre, Singapore 339949
Tel: +65-6213-0200, Fax: +65-6213-0300

Renesas Electronics Malaysia Sdn.Bhd.

Unit 1207, Block B, Menara Amcorp, Amcorp Trade Centre, No. 18, Jln Persiaran Barat, 46050 Petaling Jaya, Selangor Darul Ehsan, Malaysia
Tel: +60-3-7955-9390, Fax: +60-3-7955-9510

Renesas Electronics India Pvt. Ltd.

No.77C, 100 Feet Road, HALII Stage, Indiranagar, Bangalore, India
Tel: +91-80-67208700, Fax: +91-80-67208777

Renesas Electronics Korea Co., Ltd.

12F., 234 Teheran-ro, Gangnam-Gu, Seoul, 135-080, Korea
Tel: +82-2-558-3737, Fax: +82-2-558-5141

License Manager V2.00.00