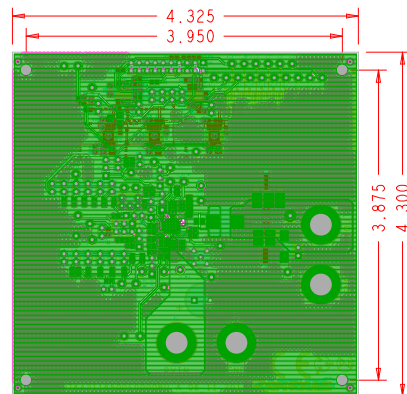


DRILL CHART: TOP to BOTTOM			
ALL UNITS ARE IN MILS			
FIGURE	SIZE	PLATED	QTY
⊙	10.0	PLATED	3507
⊙	11.0	PLATED	105
⊙	35.0	PLATED	5
⊙	36.0	PLATED	1
⊙	40.0	PLATED	46
△	40.0	PLATED	4
△	41.0	PLATED	97
⊙	275.0	PLATED	4
⊙	128.0	NON-PLATED	4



RENESES  
06-11-2019  
RTKA211650DE0000BU\_A\_06\_11\_2019

- NOTES:
1. THIS BOARD IS RoHS COMPLIANT.
  2. PRINTED WIRING BOARD DESIGN AND ACCEPTANCE CRITERIA SHALL BE IAW WITH THE REQUIREMENTS OF IPC-D-275 AND IPC-A-600.
  3. MATERIAL: FR4 (RoHS COMPLIANT), 1 OZ COPPER.
  4. APPLY SOLDER MASK, BOTH SIDES OVER BARE COPPER IAW IPC-SM-840. CLASS 2 (LPI) (BLUE MASK).
  5. ALL PATTERNS ARE VIEWED FROM THE PRIMARY SIDE LOOKING THROUGH THE BOARD.
  6. UNLESS OTHERWISE SPECIFIED ALL HOLE DIAMETERS ARE AFTER PLATING.
  7. APPLY SILKSCREEN USING WHITE NON-CONDUCTIVE EPOXY BASED INK.
  8. PWB MUST BE 100% ELECTRICALLY TESTED FOR SHORTS AND CONTINUITY. USE NETLIST PROVIDED RTKA211650D00000BU-A IPC356.IPC IAW IPC-D-356.
  9. MARK DATE CODE AND MANUFACTURES IDENTIFICATION ON SOLDER SIDE PER IPC-6011 AND IPC-6012.
  10. TOLERANCE ON ALL DRILL HOLES SHALL BE IAW IPC-D-2221 & 2222 UNLESS OTHERWISE SPECIFIED.
  11. ALL 11 MIL VIA'S ARE TO BE THERMAL EPOXY FILLED AND CAPPED.
  12. WAIVE IPC610 SPEC FOR SOLDER FILL VIA (VIA-IN-PAD).

Drawn By:	Date Drawn:	Engineers:
TOM UMBERGER	06/11/2019	KRISHNA MAINALI
Released By:	Date Released:	RAA211650 EVAL BOARD PCB LAYOUT
Updated By:	Date Updated:	
RENESES		MASK
FILENAME:		SDWR ID
RTKA211650DE0000BU_A_06_11_2019		REV. A
SHEET		1 of 1