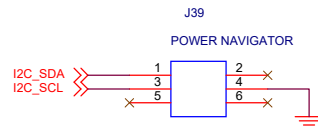
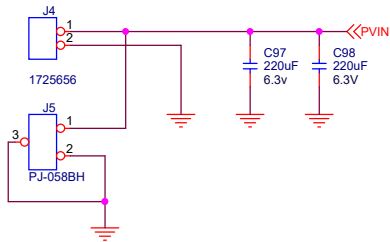
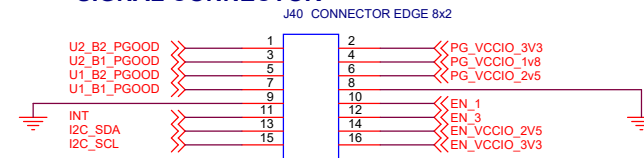


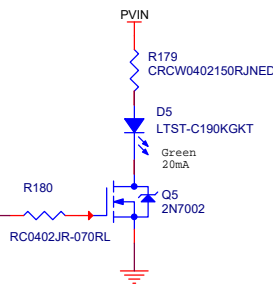
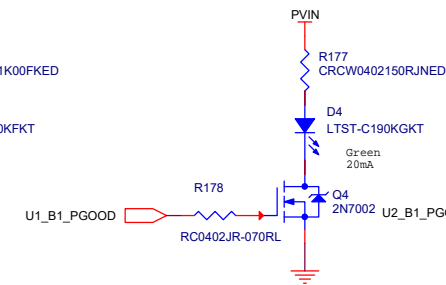
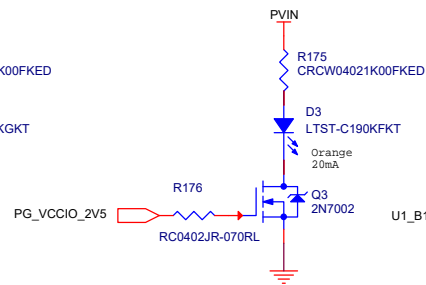
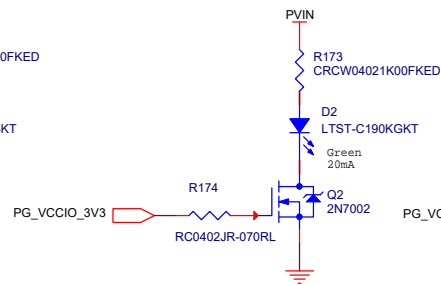
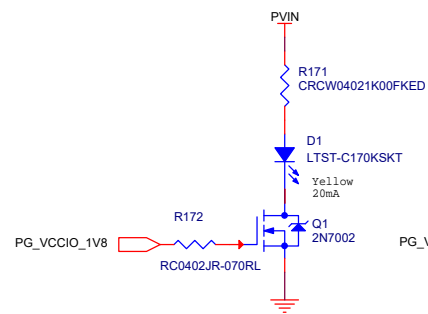
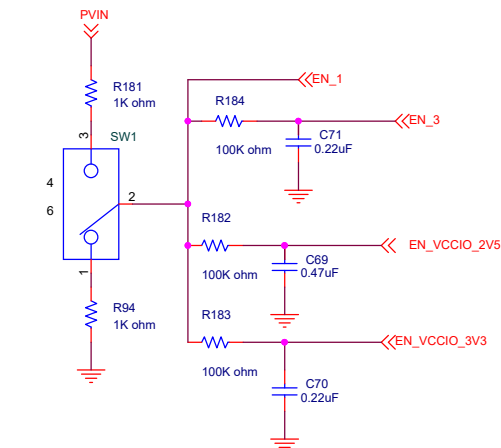
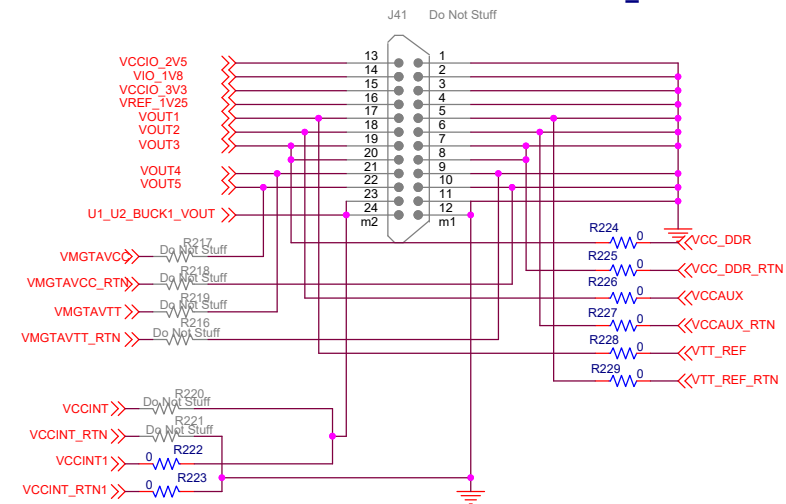
Title		
Power Tree		
Size	Document Number	Rev
B	<Doc>	A
Date:	Friday, January 24, 2020	Sheet 1 of 7



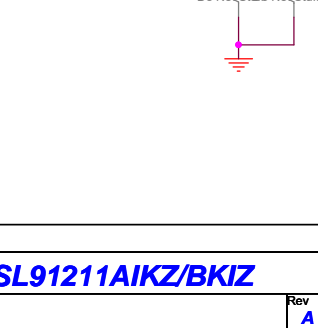
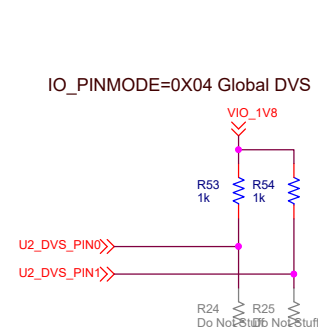
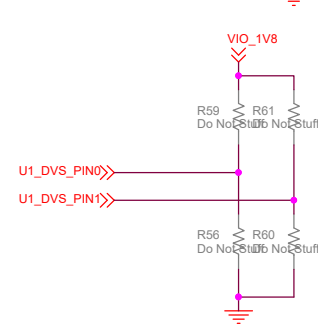
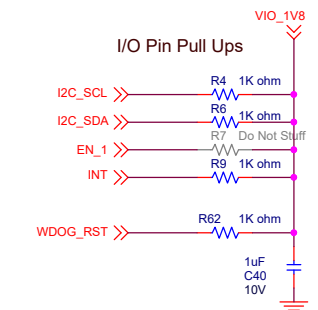
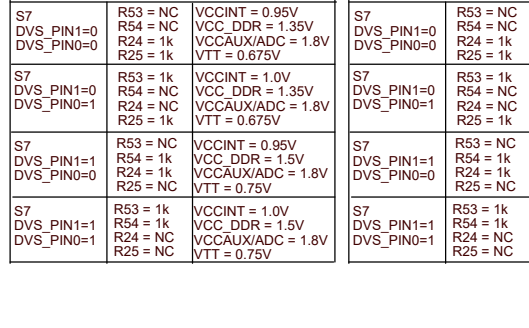
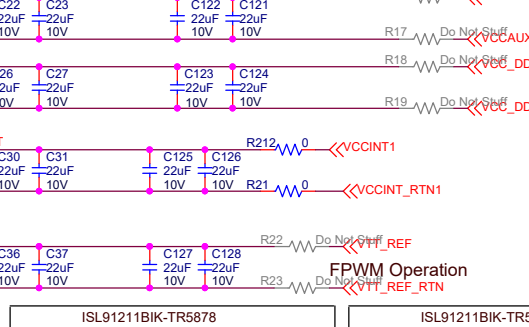
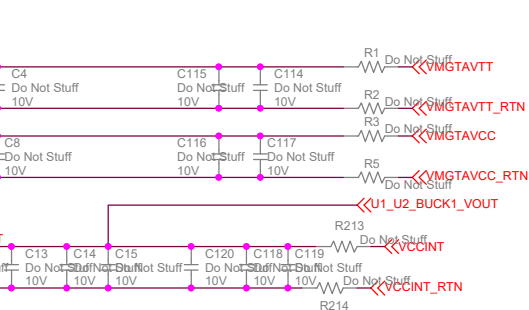
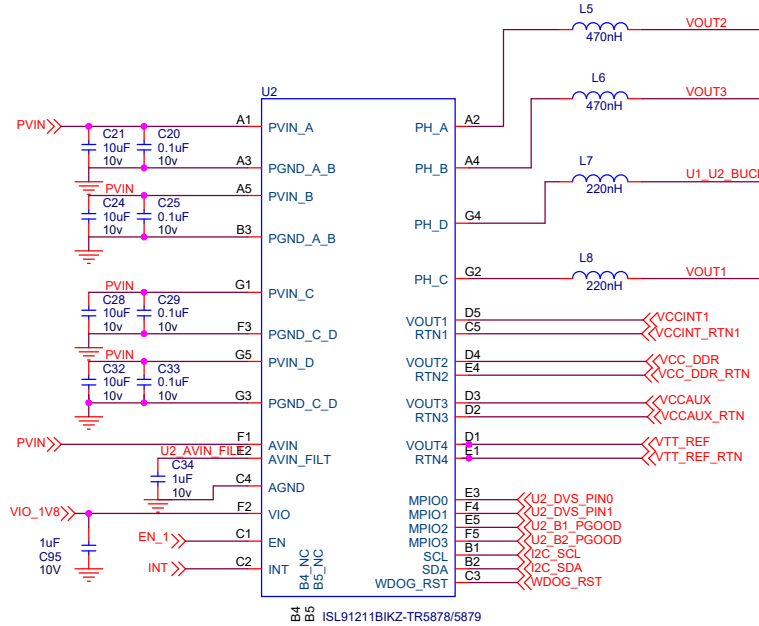
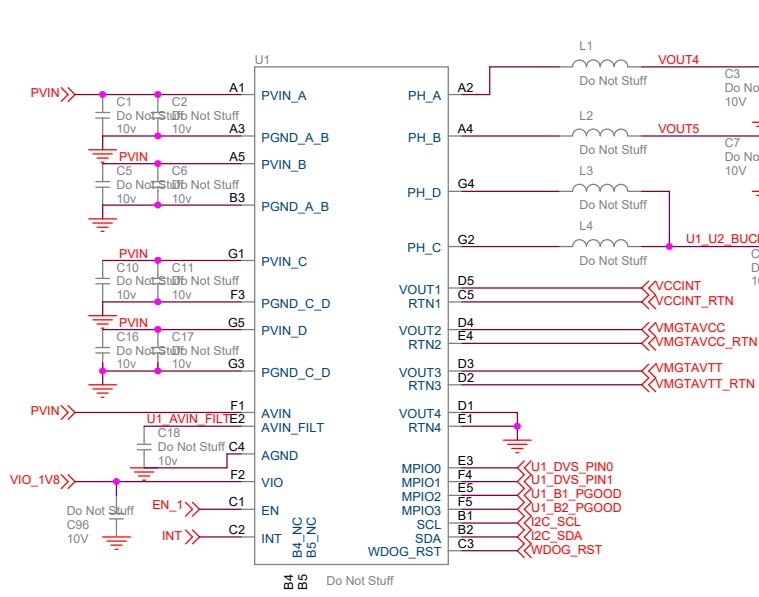
SIGNAL CONNECTOR



POWER CONNECTOR MOLEX PART NUMBER: 442060007_sd



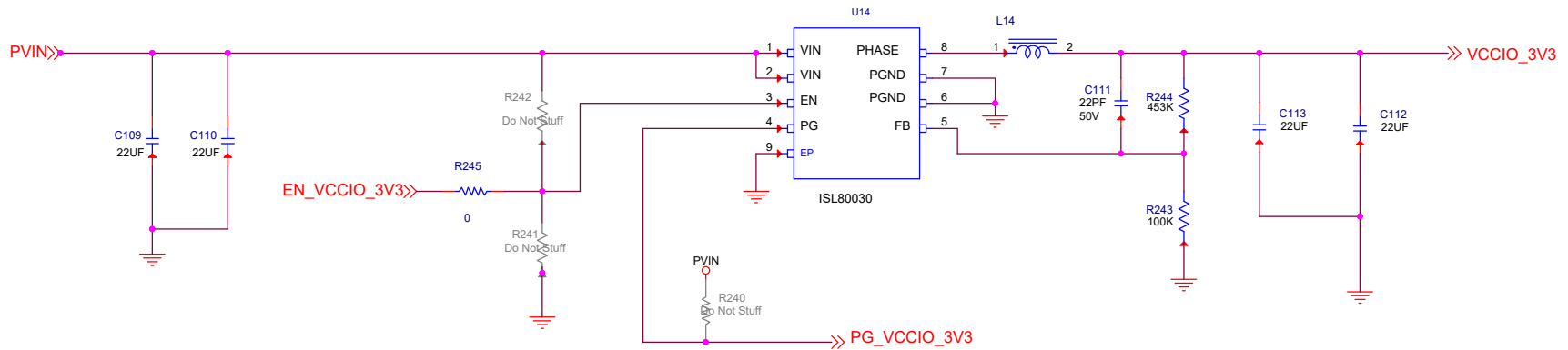
Title			HardWare
Size	Document Number	Rev	
B	<Doc>	A	
Date:	Tuesday, August 13, 2019	Sheet	2 of 7



ISL91211BIKZ-TR5878				ISL91211BIKZ-TR5879			
S7	DVS_PIN1=0	R53 = NC	VCCINT = 0.95V	S7	DVS_PIN1=0	R53 = NC	VCCINT = 0.95V
DVS_PIN0=0	R54 = NC	VCC_DDR = 1.35V	VCC_AUX/ADC = 1.8V	DVS_PIN0=0	R54 = NC	VCC_DDR = 1.2V	VCC_AUX/ADC = 1.8V
	R24 = 1k	VTT = 0.675V			R24 = 1k	VTT = 0.6V	
	R25 = 1k				R25 = 1k		
S7	DVS_PIN1=0	R53 = 1k	VCCINT = 1.0V	S7	DVS_PIN1=0	R53 = 1k	VCCINT = 1.0V
DVS_PIN0=1	R54 = NC	VCC_DDR = 1.35V	VCC_AUX/ADC = 1.8V	DVS_PIN0=1	R54 = NC	VCC_DDR = 1.2V	VCC_AUX/ADC = 1.8V
	R24 = NC	VTT = 0.675V			R24 = NC	VTT = 0.6V	
	R25 = 1k				R25 = 1k		
S7	DVS_PIN1=1	R53 = 1k	VCCINT = 0.95V	S7	DVS_PIN1=1	R53 = NC	VCCINT = 0.9V
DVS_PIN0=0	R54 = 1k	VCC_DDR = 1.5V	VCC_AUX/ADC = 1.8V	DVS_PIN0=0	R54 = 1k	VCC_DDR = 1.35V	VCC_AUX/ADC = 1.8V
	R24 = 1k	VTT = 0.75V			R24 = 1k	VTT = 0.675V	
	R25 = NC				R25 = NC		
S7	DVS_PIN1=1	R53 = 1k	VCCINT = 1.0V	S7	DVS_PIN1=1	R53 = 1k	VCCINT = 0.9V
DVS_PIN0=1	R54 = 1k	VCC_DDR = 1.5V	VCC_AUX/ADC = 1.8V	DVS_PIN0=1	R54 = 1k	VCC_DDR = 1.35V	VCC_AUX/ADC = 1.8V
	R24 = NC	VTT = 0.75V			R24 = NC	VTT = 0.675V	
	R25 = NC				R25 = NC		

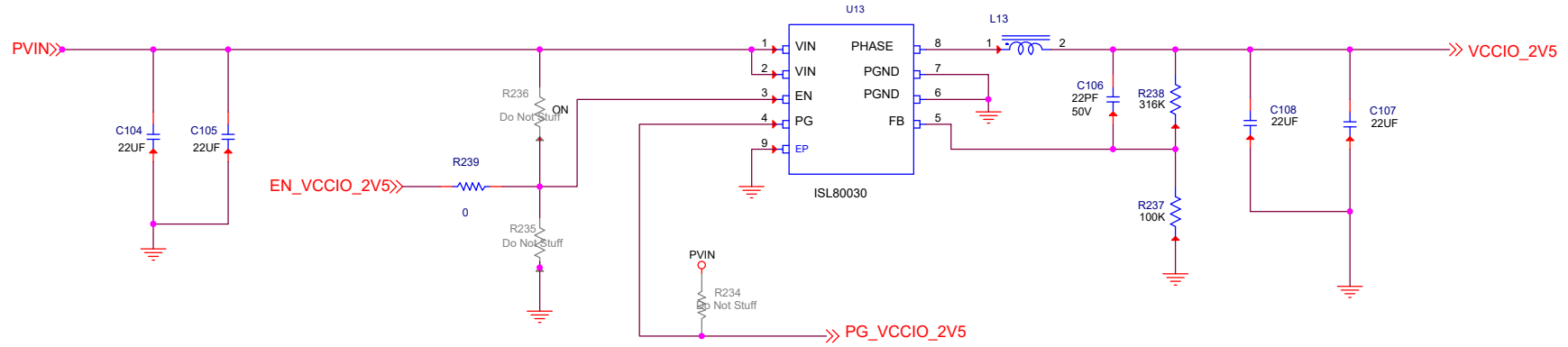
Title				ISL91211AIKZ/BKIZ			
Size		Document Number		Rev		A	
B		<Doc>					
Date:		Friday, January 24, 2020		Sheet		3 of 7	

ISL80030 SINGLE OUTPUT FOR VCCIO 3.3V



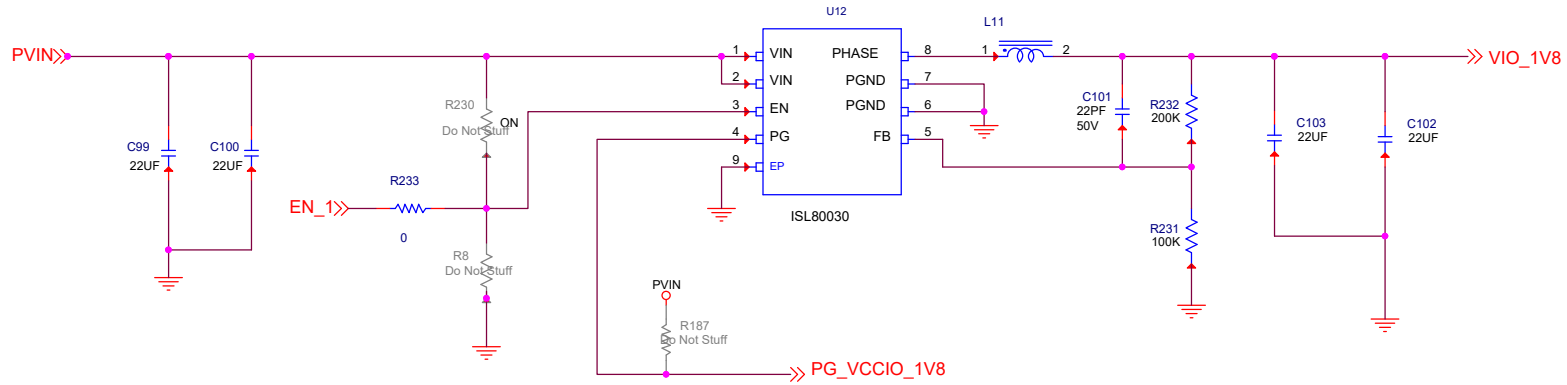
Title			ISL80030-SINGLE-3.3V		
Size	Document Number				Rev
B	<Doc>				A
Date:	Friday, January 24, 2020		Sheet	4	of 7

ISL80030 SINGLE OUTPUT FOR VCCIO 2.5V



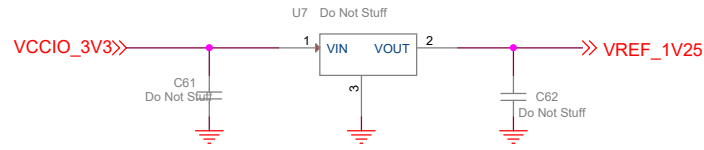
Title		
ISL80030-SINGLE-2.5V		
Size	Document Number	Rev
B	<Doc>	A
Date:	Friday, January 24, 2020	Sheet 5 of 7

ISL80030 SINGLE OUTPUT FOR VCCIO 1.8V

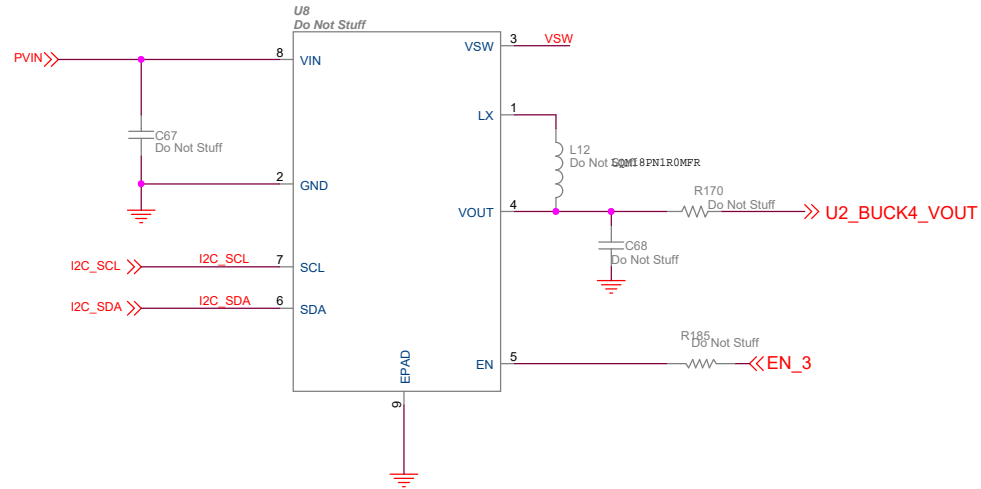


Title			
ISL80030-SINGLE-1.8V			
Size	Document Number		Rev
B	<Doc>		A
Date:	Friday, January 24, 2020	Sheet	6 of 7

ISL21010DFH312 for 1.25V reference to FPGA ADC



ISL9123IRN for VTT_REF - FPWM



Title		
ISL21010DFH312		
Size	Document Number	Rev
B	<Doc>	A
Date:	Friday, January 24, 2020	Sheet 7 of 7