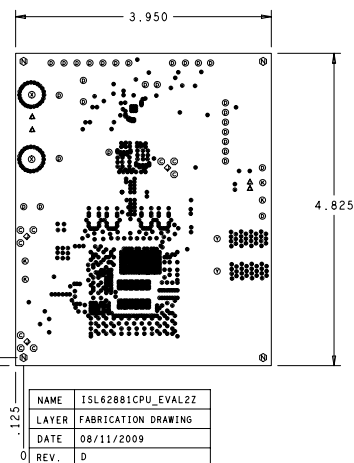


LAYER STACKING

SCALE: NONE

NOTES: UNLESS OTHERWISE SPECIFIED:

- 1 THIS IS A 8 LAYER BOARD WITH COMPONENTS ON BOTH SIDES.
- 2 RINTED CIRCUIT BOARD SHALL BE 1 OUNCE COPPER
- 3 SMT LAND PATTERNS THAT HAVE A FINISHED PAD WIDTH RANGING FROM .012 TO .015 MUST USE THE FOLLOWING TOLERANCE, $\pm .002 - .0005$.
PB VENDOR TO ADJUST ARTWORK TO COMPENSATE FOR ETCH PROCESS.
- 4 MANUFACTURE/FABRICATE TO MEET EU RoHS DIRECTIVE.
ALL MATERIALS AND SOLDERMASK TO BE COMPLIANT TO EU RoHS DIRECTIVE 20002/95/EC
LAMINATE AND RESIN MATERIAL PARAMETERS
Tg > 170 C
Td > 294 C
- 5 SILKSCREEN BOTH SIDES WITH WHITE NON CONDUCTIVE EPOXY BASED INK
- 6 IMMERSION GOLD FINISH
- 7 MINIMUM SPACE .005"/TRACE .008"
- 8 ALL VIAS ARE TINTED
- 9 BLUE SOLDER MASK.



DRILL CHART: TOP & BOTTOM			
ALL UNITS ARE IN MILS			
FIGURE	SIZE	PLATED	QTY
•	8.0	PLATED	900
⊙	37.0	PLATED	9
⊙	40.0	PLATED	29
▲	41.0	PLATED	4
◇	93.0	PLATED	3
⊙	100.0	PLATED	4
⊙	155.0	PLATED	2
⊙	200.0	PLATED	2
⊙	128.0	NON-PLATED	4

NAME	ISL62881CPU_EVAL2Z
LAYER	FABRICATION DRAWING
DATE	08/11/2009
REV.	D

Drawn By: MARGARET SAVIEO 919 405-3625	Date Drawn: 08-11-09	Engineer: JIA WEI
Released By:	Date Released:	ISL62881CPU_EVAL2Z
Updated By:	Date Updated:	
FILENAME: ISL62881CPU EVAL2ZREVC	SHEET 1 of 1	REV. D