

RX23E-A Group

Analog Front End Typical Characteristics

Summary

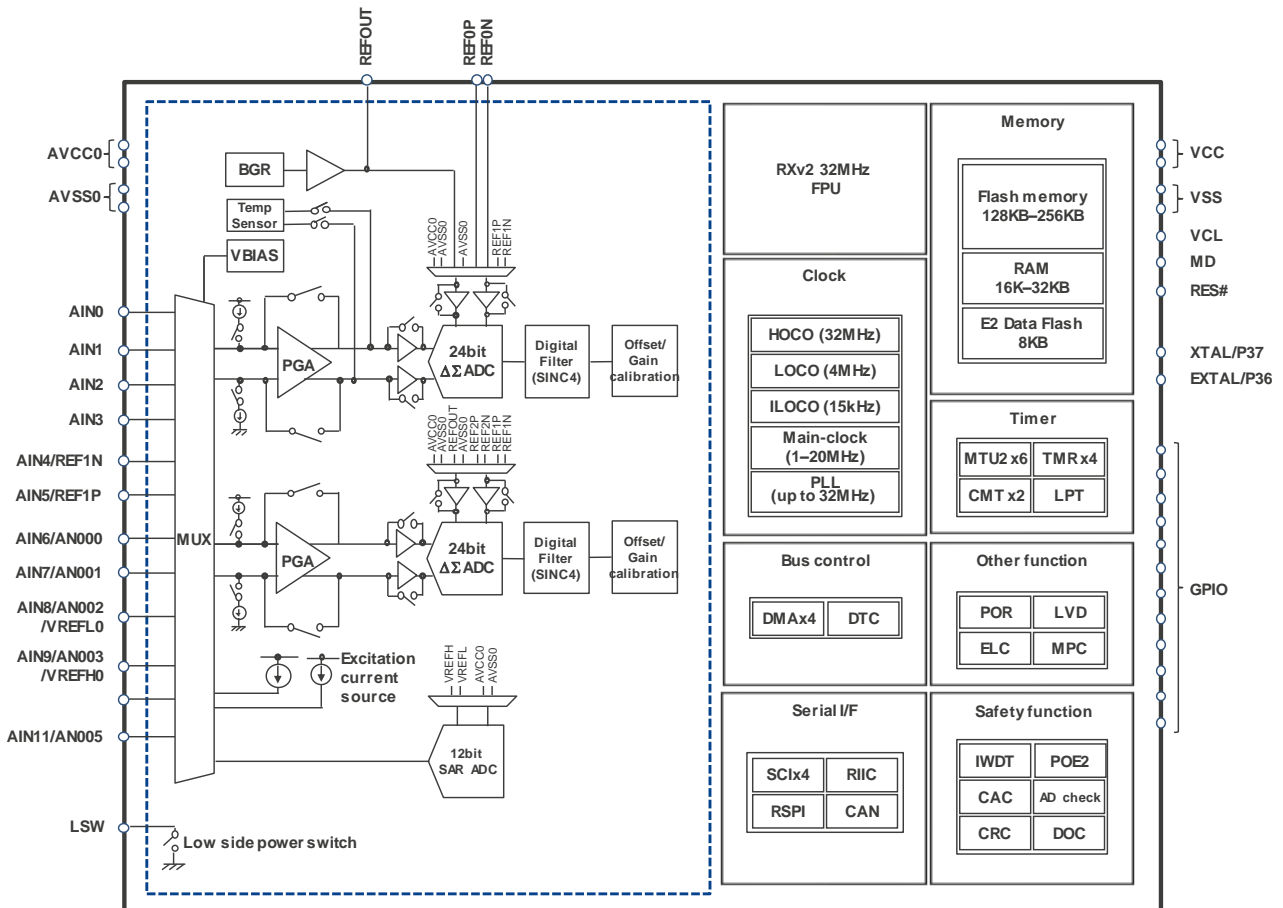
This document describes typical analog characteristics of 24bit Δ - Σ A/D converter (DSAD) and Analog Front End (AFE) integrated in RX23E-A.

Measurement conditions are described as below, unless otherwise specified.

AVCC0=5V, Ta=25°C, External VREF=2.5V, Normal mode, OPCR.DSADLVM bit=0 (*1)

See below for the meaning of abbreviations contained in this document.

- Gain=1(DSAD) : PGA disabled / Buffer disabled
- Gain=1(BUF) : PGA disabled / Buffer enabled
- Gain=1(PGA) : PGA enabled / Buffer enabled
- PRB : Positive Reference Buffer
- NRB : Negative Reference Buffer



Target Device

RX23E-A

*1 OPCR.DSADLVM bit selects the operating voltage for Δ - Σ A/D. When the AVCC0 voltage is lower than 3.6 V, set it to 1. To use Δ - Σ A/D with high precision, set the AVCC0 voltage to 3.6 V or higher, and set this bit to 0.

Contents

1.	RX23E-A Analog Front End Features	4
2.	24bit Delta-Sigma A/D Converter	5
2.1	Noise histogram, Time domain waveform	5
2.2	Integral nonlinearity error (INL)	7
2.3	Offset error histogram	9
2.4	Offset error temperature drift.....	11
2.5	Offset error - Input common mode voltage	12
2.6	Gain error histogram	14
2.7	Gain error temperature drift.....	16
2.8	RMS noise – Input differential voltage	17
2.9	RMS noise VREF dependence histogram	18
2.10	RMS noise – Data rate	21
2.11	Effective resolution – Data rate.....	22
2.12	Noise table (Normal mode)	23
2.13	Noise table (Low power mode).....	24
2.14	Common Mode Rejection Ratio (CMRR)	25
3.	Voltage Reference (VREF)	26
3.1	Initial accuracy, Temperature drift, Load regulation	26
4.	Excitation Current Source (IEXC)	27
4.1	Initial accuracy, Current matching	27
4.2	Temperature drift.....	28
4.3	Drift matching	29
4.4	Load regulation.....	30
5.	Temperature sensor (TEMPS).....	30
5.1	Temperature error	30
6.	24-bit Delta-Sigma A/D Converter Analog Input.....	31
6.1	Input current temperature dependence	31
6.2	Input bias current – Input voltage	32
6.3	Input offset current - Input voltage.....	33
7.	External Reference Input	34
7.1	Input current temperature dependence	34
7.2	Input current – Input voltage.....	34
8.	Operating Current.....	35
8.1	24-bit Delta-Sigma A/D converter operating current – AVCC0	35
8.2	24-bit Delta-Sigma A/D converter operating current temperature dependence.....	35
8.3	Buffer operating current temperature dependence	36
8.4	Voltage reference (VREF), Temperature sensor (TEMPS), Bias voltage generator (VBIAS), Excitation current source (IEXC)	36

9. High-Speed On-Chip Oscillator (HOCO).....	37
9.1 Temperature drift.....	37
10. Interference	37
10.1 From 12bit SAR-ADC	37
10.2 From MCU	38
10.3 From IO port	38
Revision history	39

1. RX23E-A Analog Front End Features

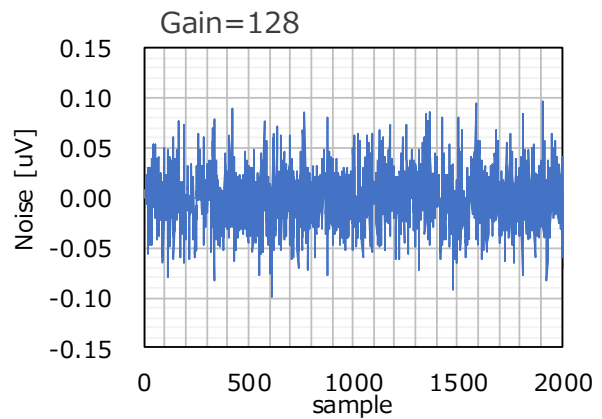
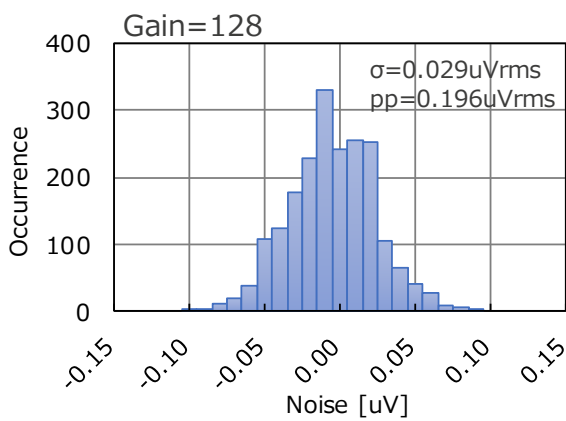
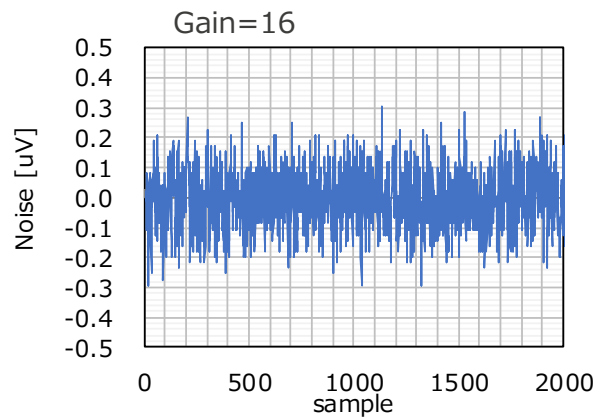
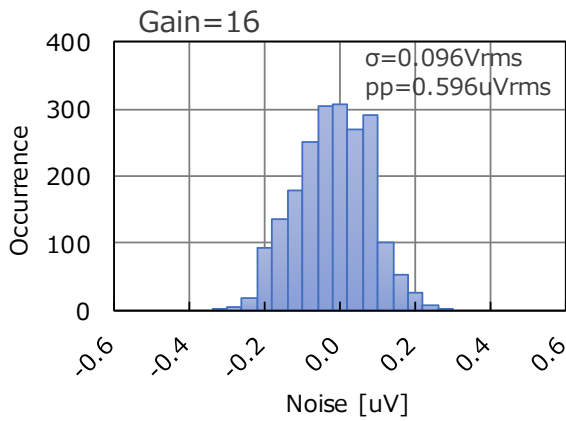
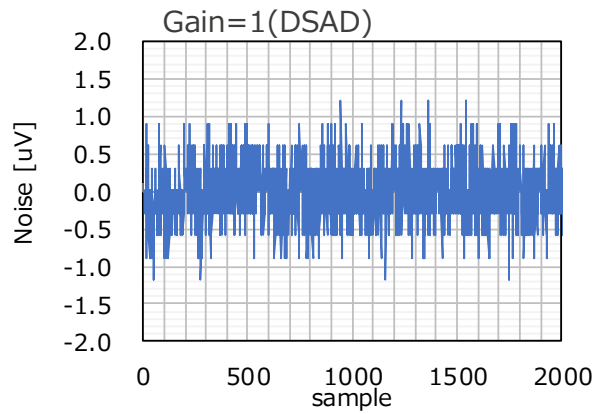
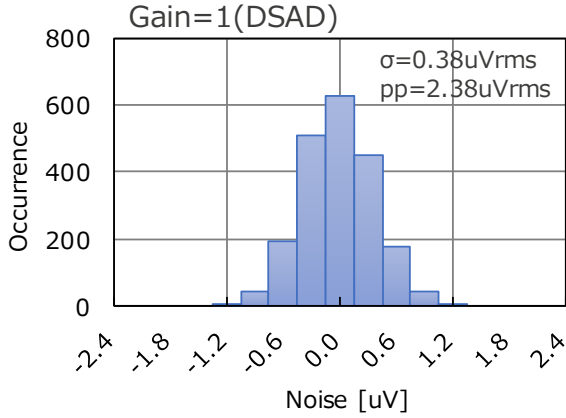
- Two 24-bit delta-sigma A/D converters
A/D converter with up to 23-bit effective resolution (gain = 1, output data rate = 7.6 SPS)
- High-precision programmable gain instrumentation amplifier,
30 nVRMS (gain = 128, output data rate = 7.6 SPS)
- Rail-to-rail programmable gain instrumentation amplifier (gain = 1 to 128)
- Two operating modes and programmable data rates,
Normal mode: Output data rate of 7.6 SPS to 15625 SPS,
Low power mode: Output data rate of 1.9 SPS to 3906 SPS
- Offset drift 10 nV/°C (gain = 128)
- Gain drift 1 ppm/°C (gain = 1 (PGA), gain = 2 to 128)
- Up to six differential inputs, 11 single-ended inputs
- Fourth-order sinc filter
- Simultaneous 50 Hz/60 Hz rejection (output data rate = 10, 54 SPS)
- Offset error and gain error calibration
- Inter-unit A/D conversion synchronized start
- Delta-sigma A/D input disconnect detection assist
- Delta-sigma A/D reference voltage external input
- Voltage reference output voltage: 2.5 V, temperature drift: 10 ppm/°C, output current: ±10 mA
- Excitation current sources: Up to four, Output current: 50 µA to 1000 µA,
current matching: ±0.2%, drift matching: 5 ppm/°C
- Bias voltage generator output voltage: $(AVCC0 + AVSS0)/2$
- Temperature sensor: Accuracy ±5°C
- Low-side switch: 10 Ω on-resistance
- Low power-supply-voltage detectors
- Delta-sigma A/D input voltage fault detectors
- Delta-sigma A/D reference voltage fault detectors and disconnect detectors
- Excitation current source disconnect detectors

2. 24bit Delta-Sigma A/D Converter

2.1 Noise histogram, Time domain waveform

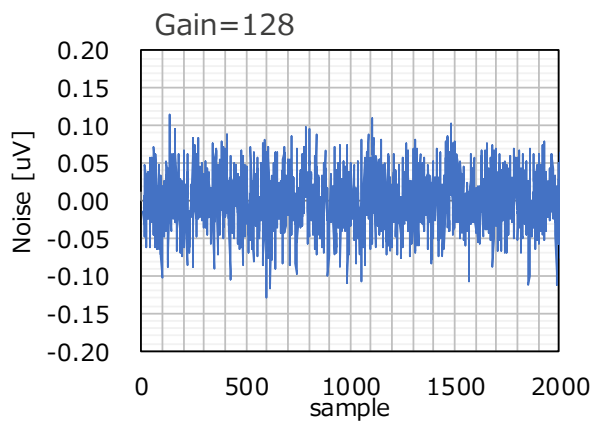
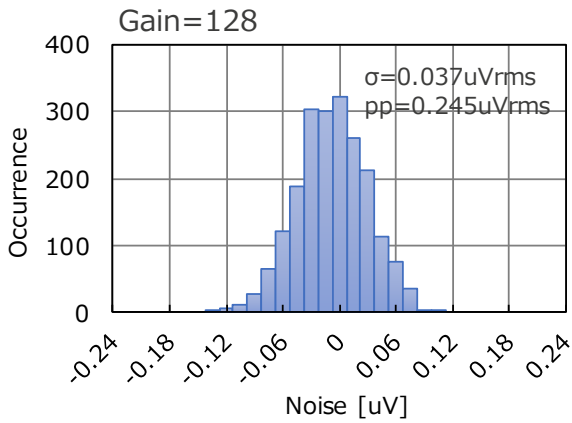
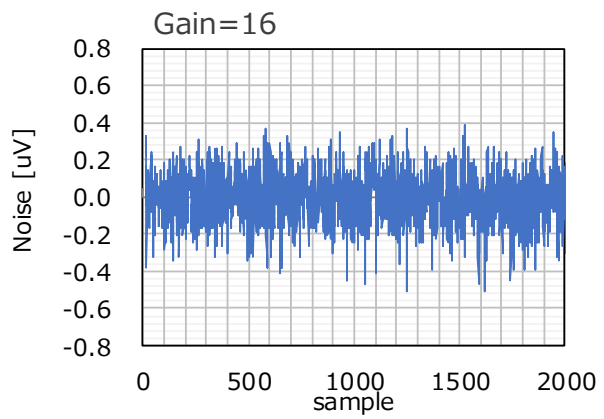
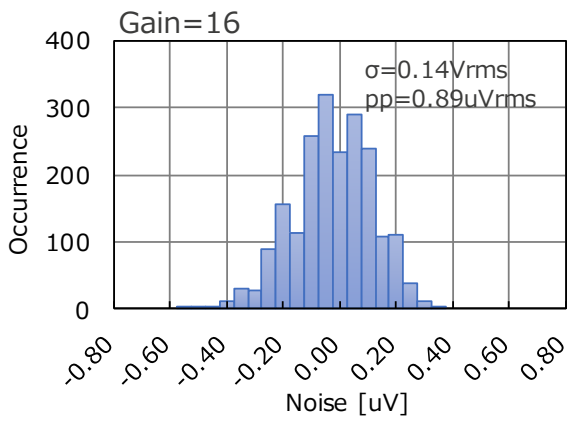
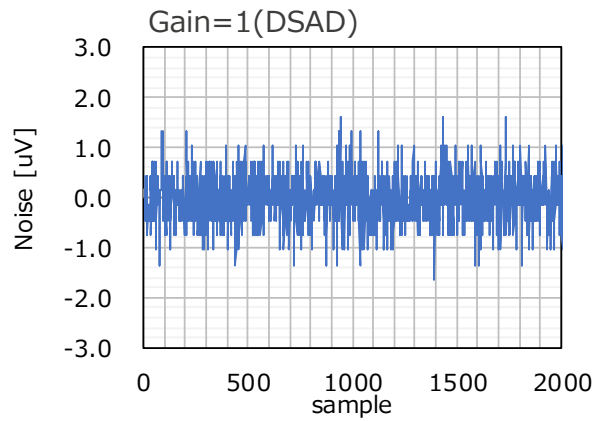
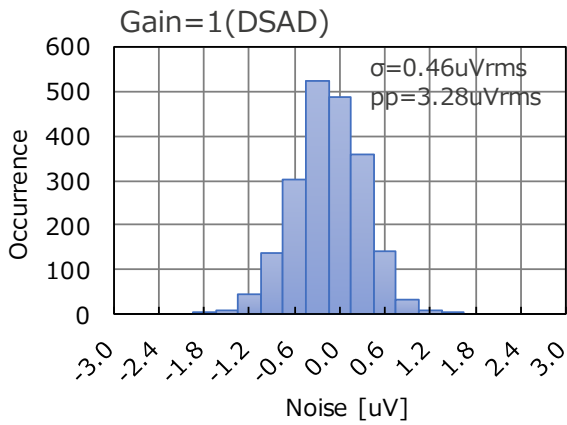
AVCC0=5V, Ta=25°C

Normal mode, Data rate=7.629sps, External VREF=2.5V, AIN=0V



AVCC0=5V, Ta=25°C

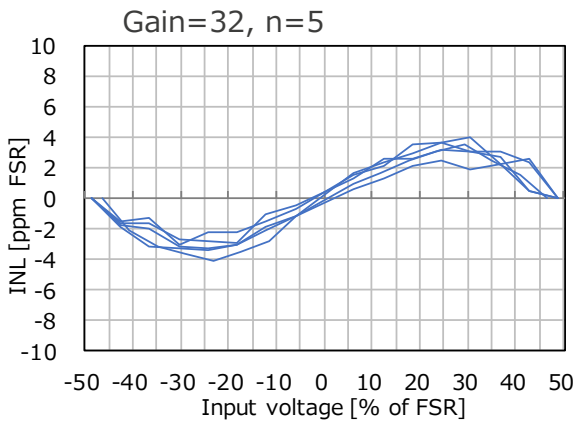
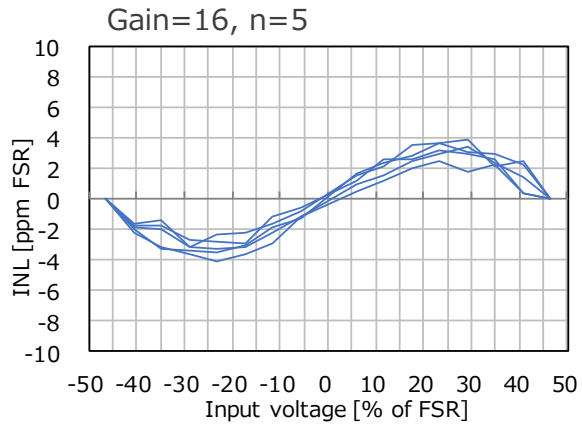
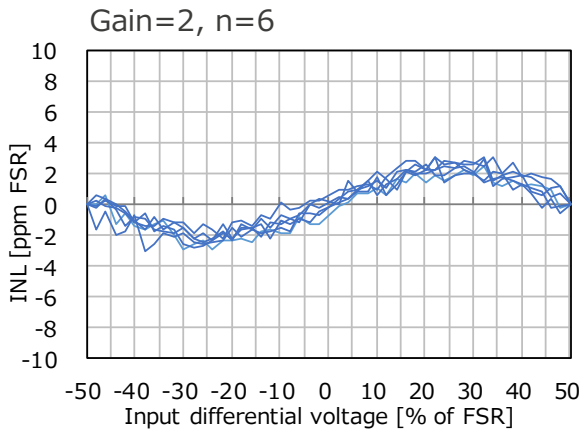
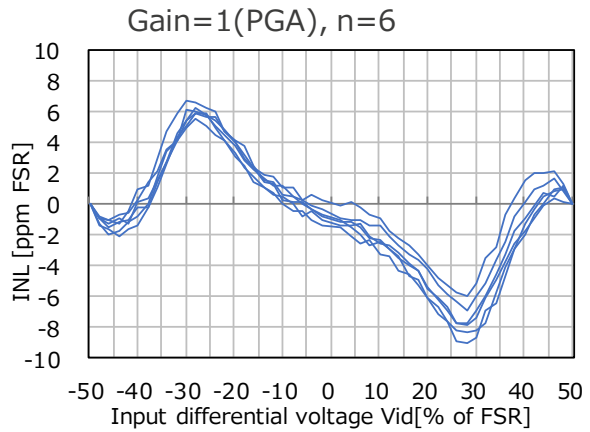
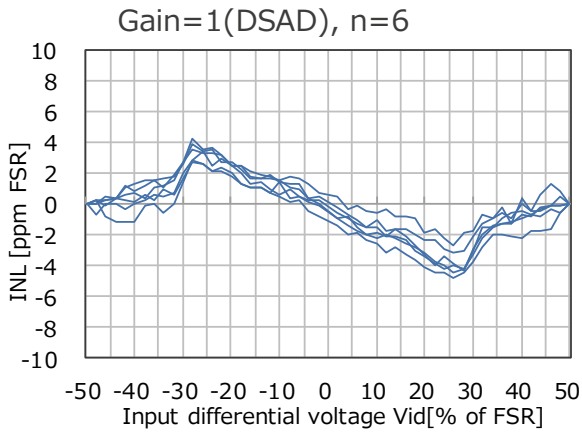
Low power mode, Data rate=7.629ps, External VREF=2.5V, AIN=0V

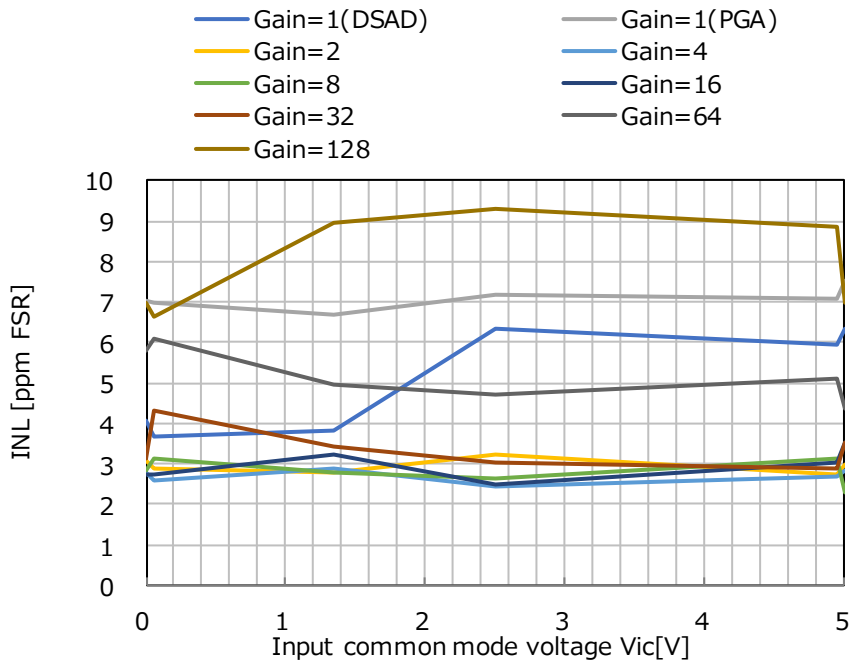
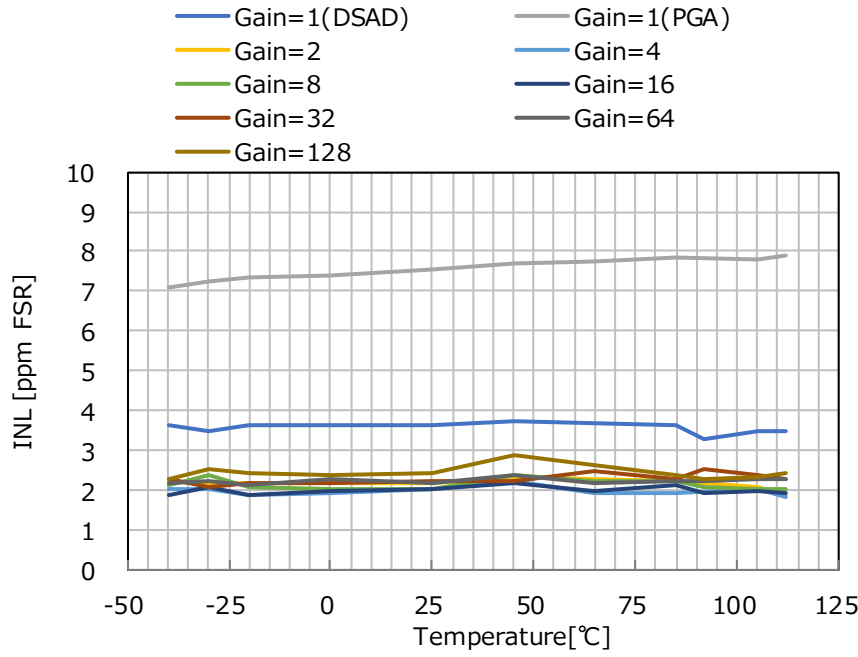


2.2 Integral nonlinearity error (INL)

AVCC0=5V, Ta=25°C

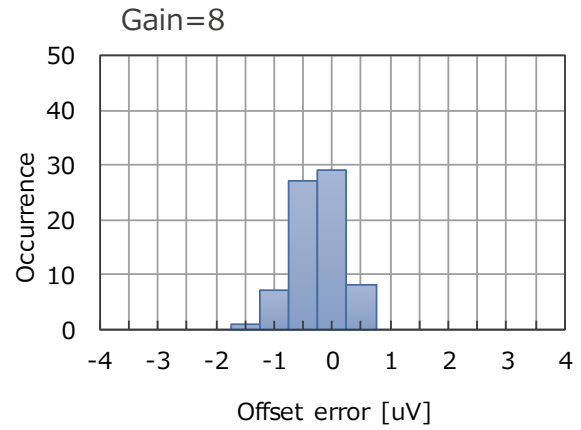
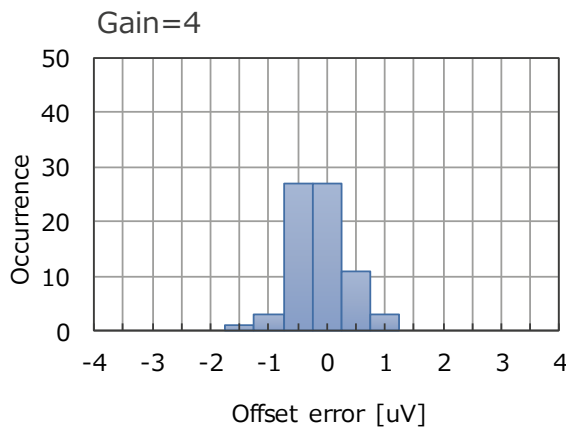
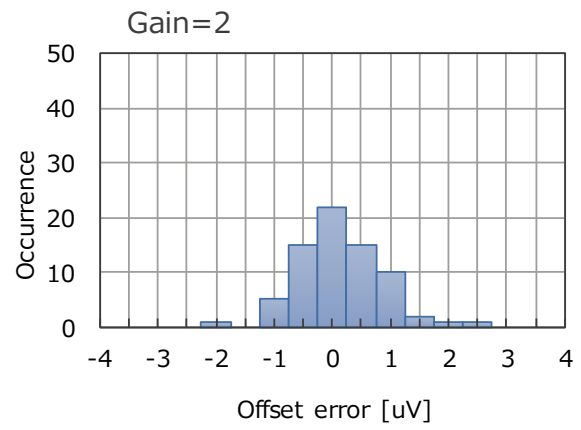
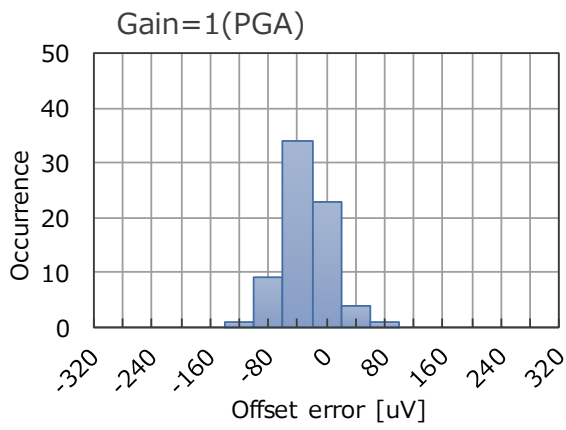
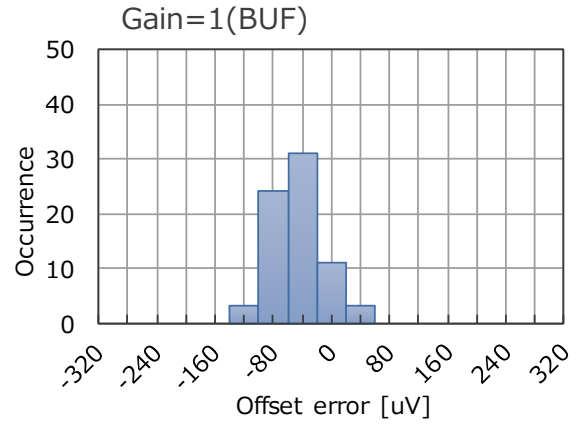
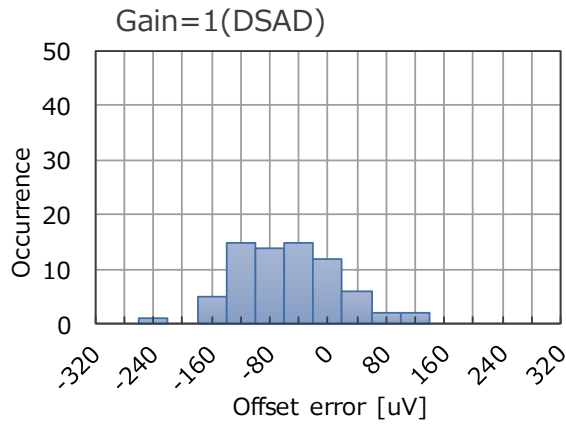
Normal mode, External VREF=2.5V

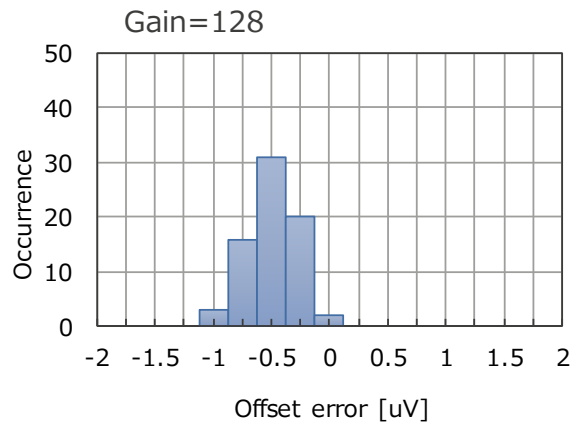
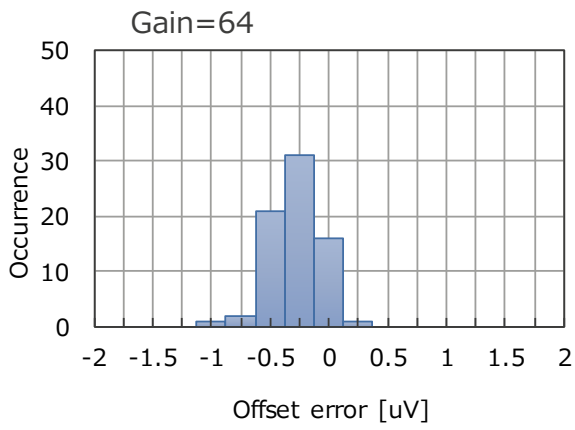
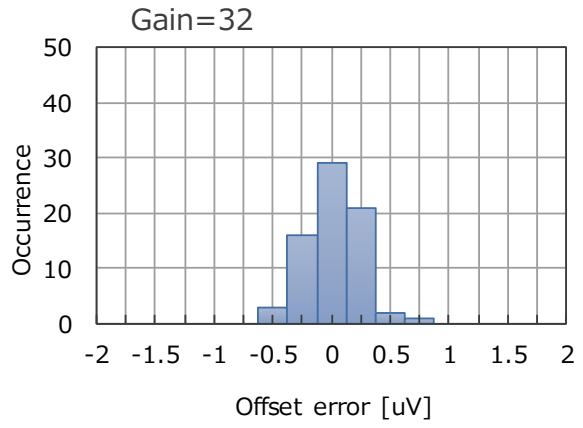
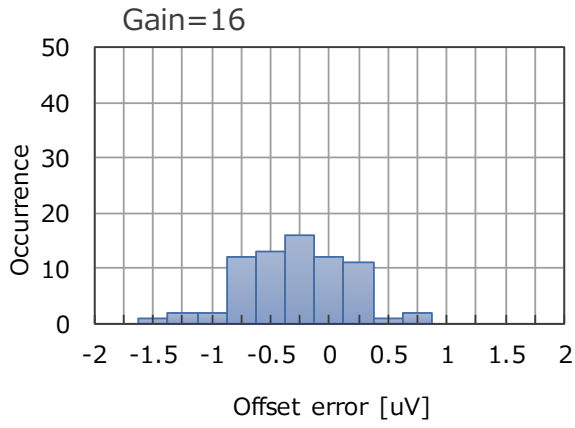




2.3 Offset error histogram

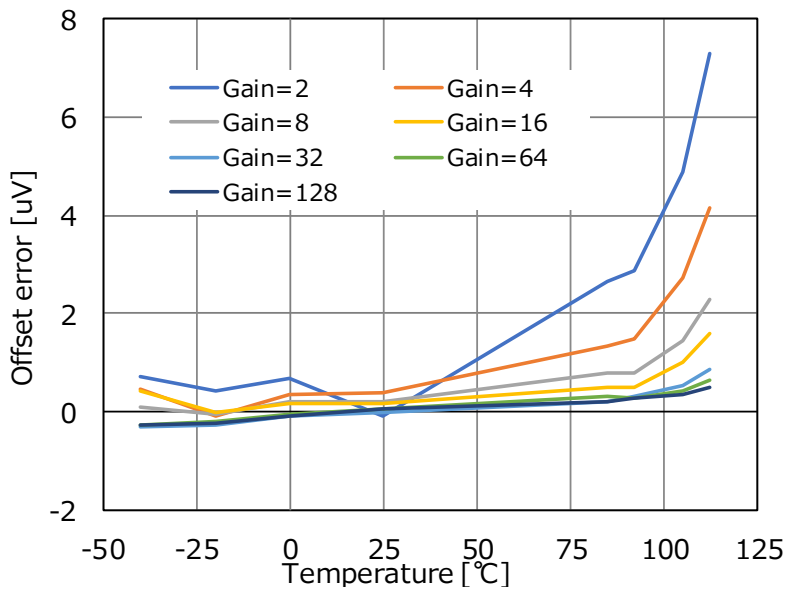
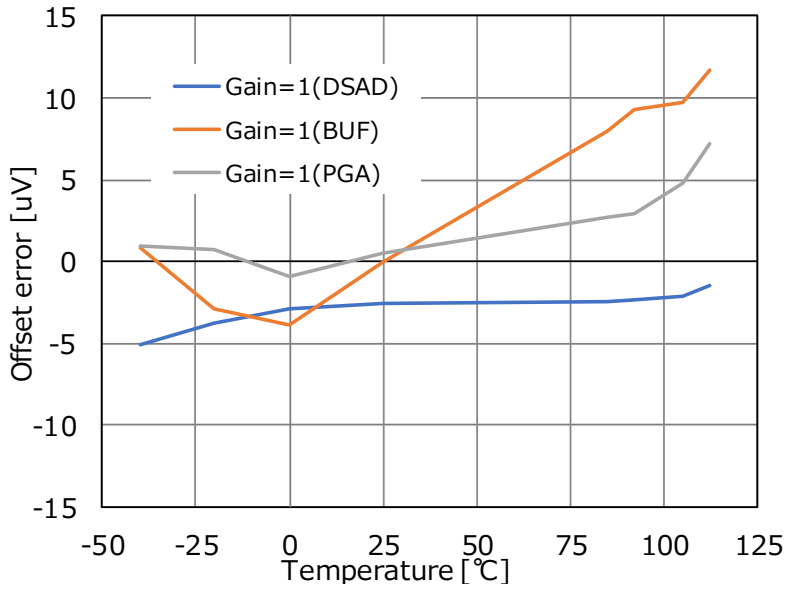
AVCC0=5V, Ta=25°C, n=72
 After factory calibration of offset errors





2.4 Offset error temperature drift

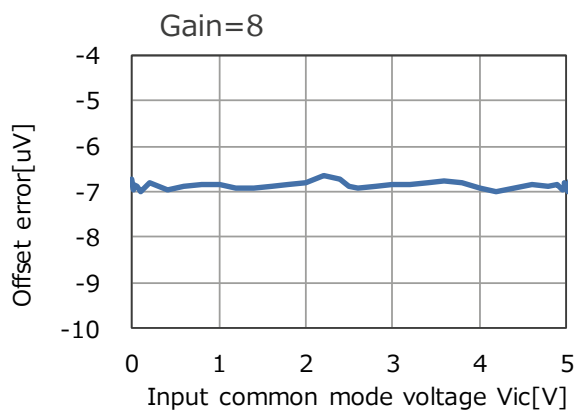
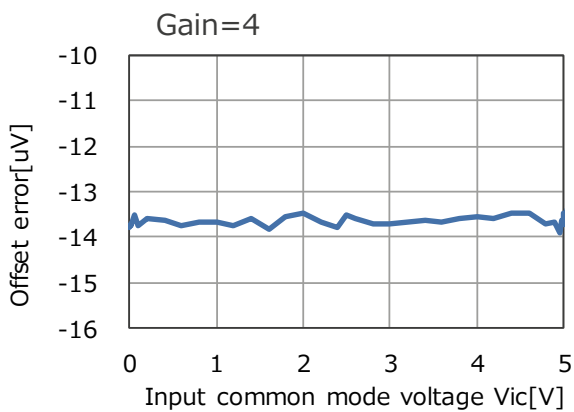
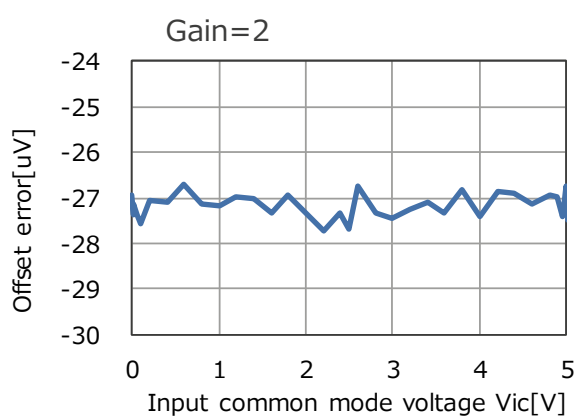
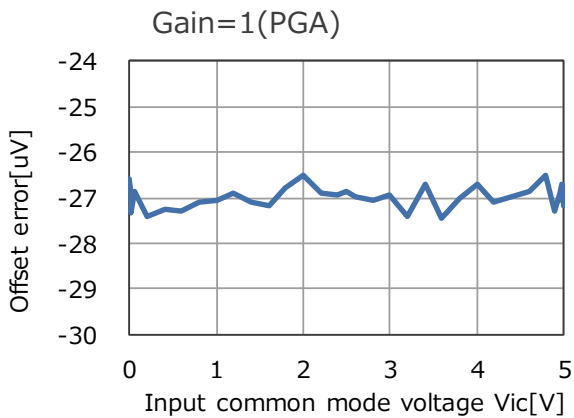
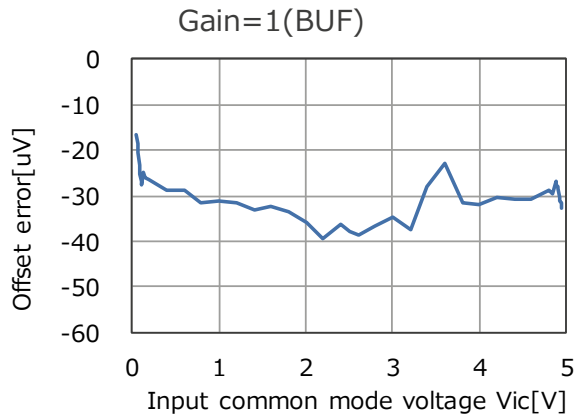
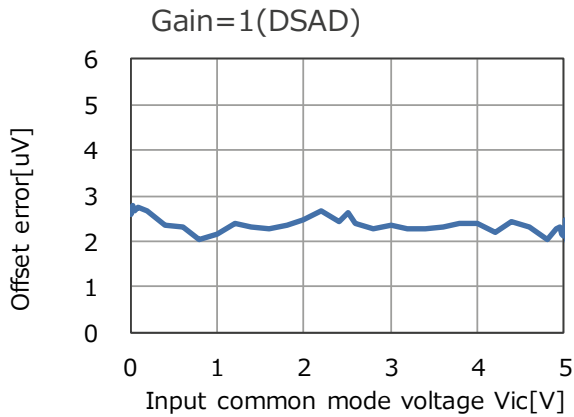
AVCC0=5V, Ta=25°C

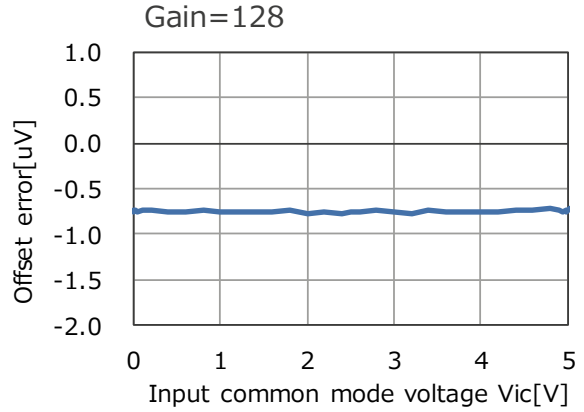
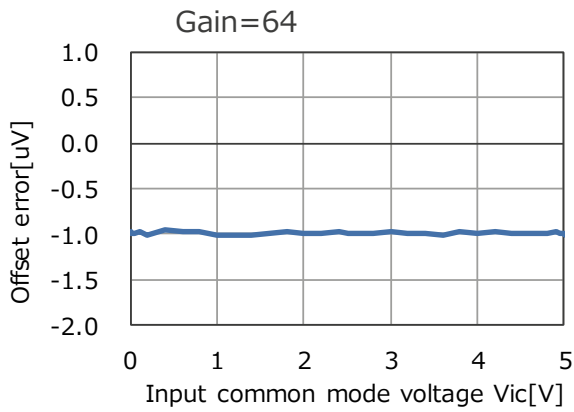
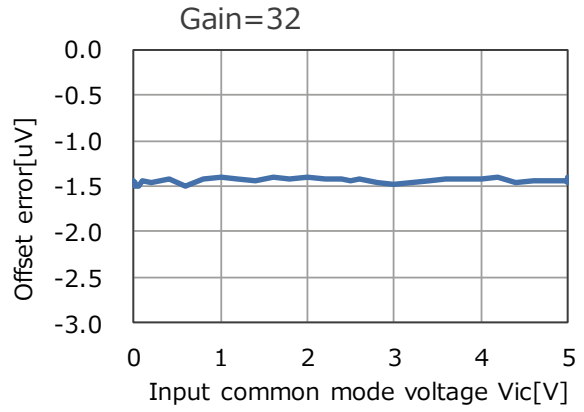
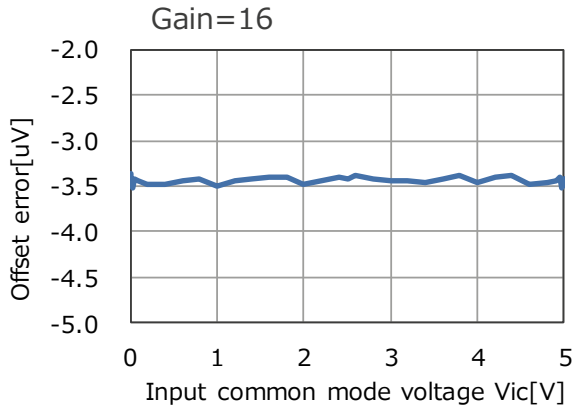


2.5 Offset error - Input common mode voltage

AVCC0=5V, Ta=25°C

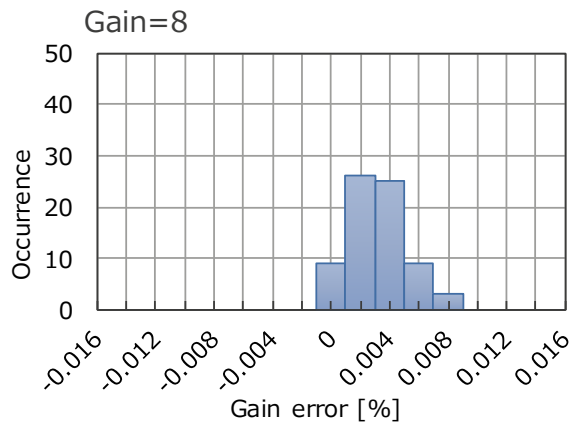
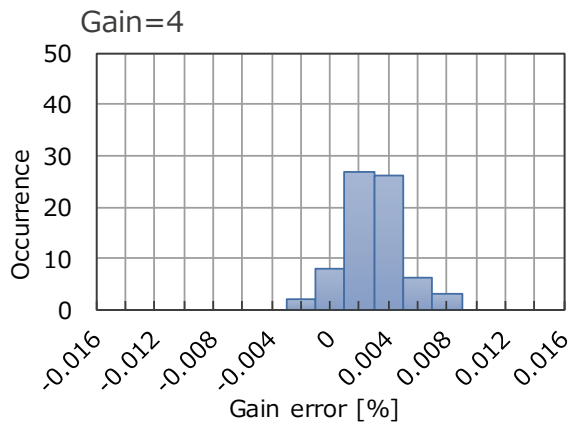
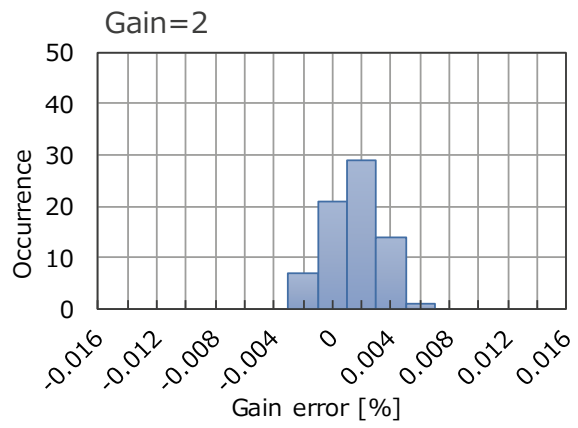
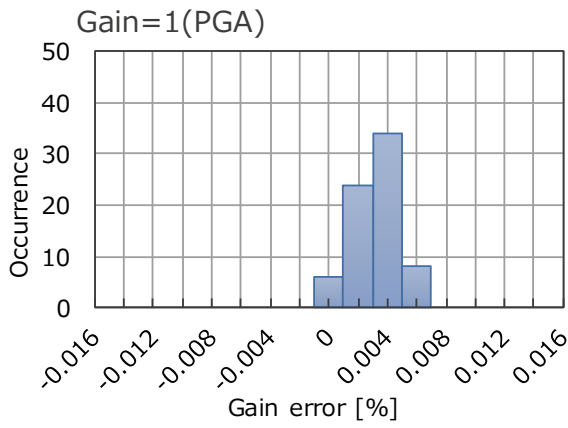
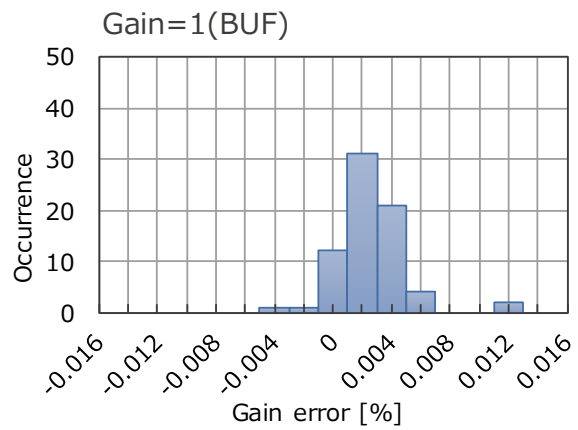
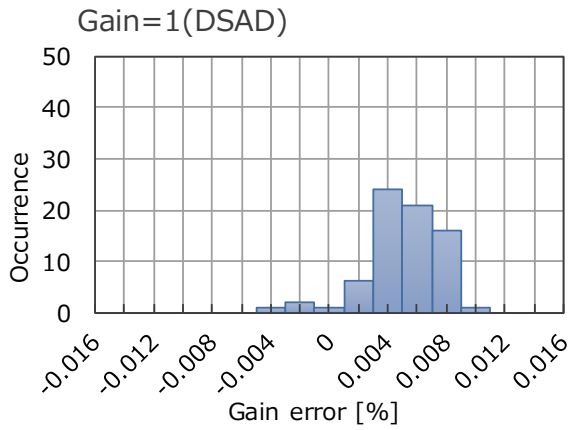
Before calibration of offset errors

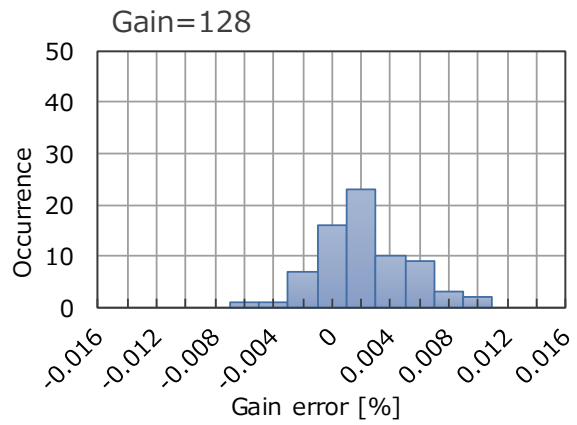
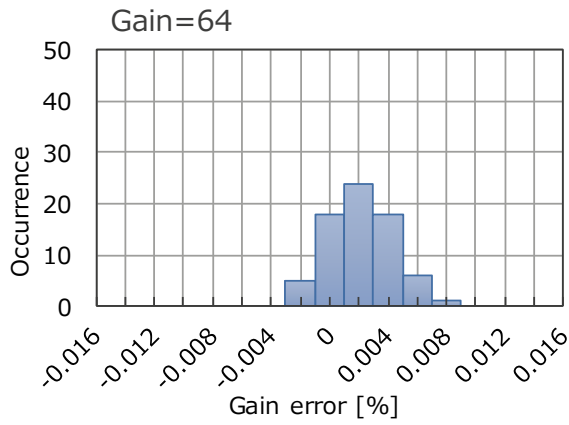
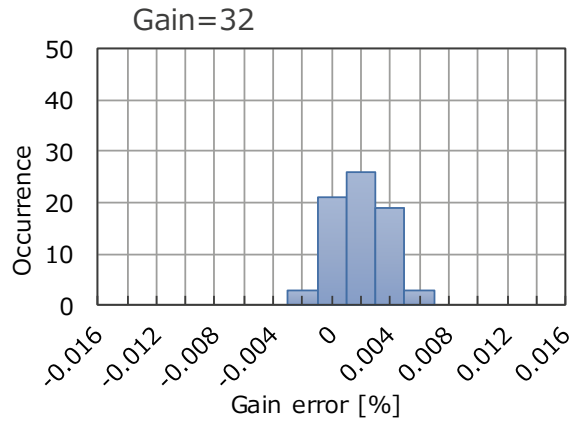
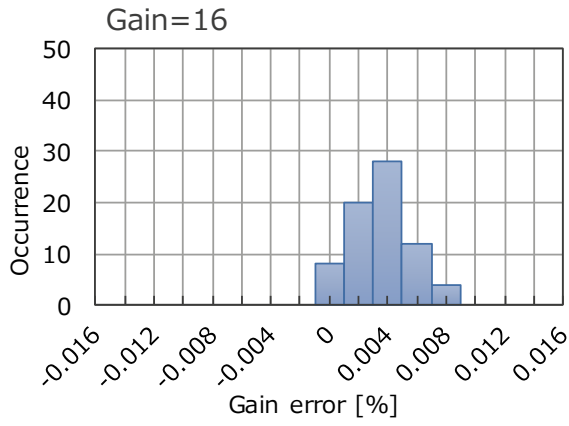




2.6 Gain error histogram

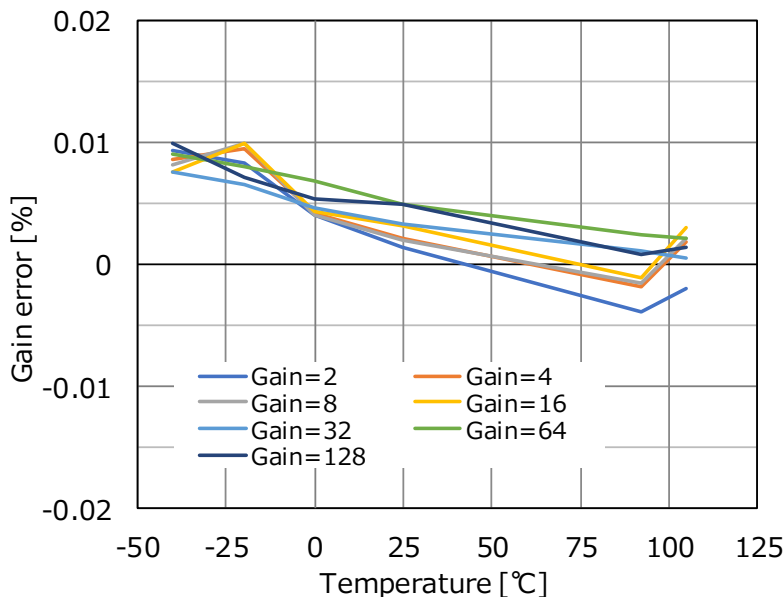
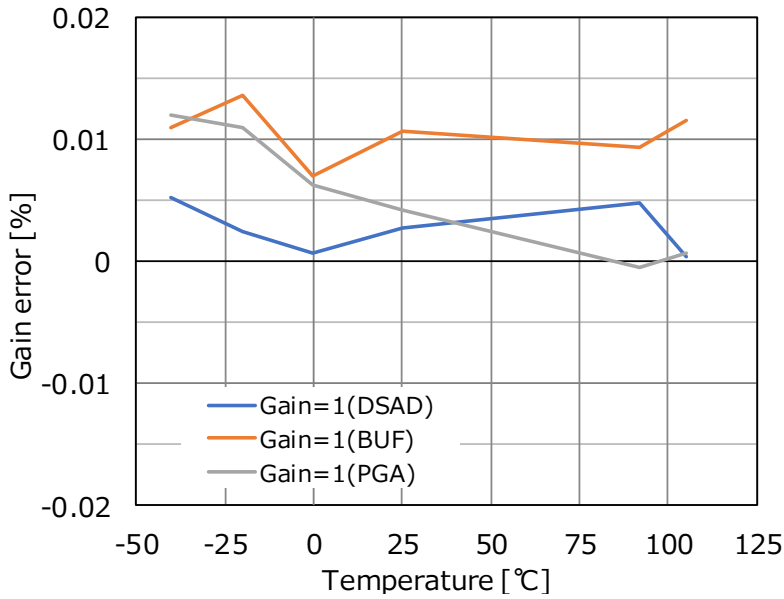
AVCC0=5V, Ta=25°C, n=72
 After factory calibration of gain errors





2.7 Gain error temperature drift

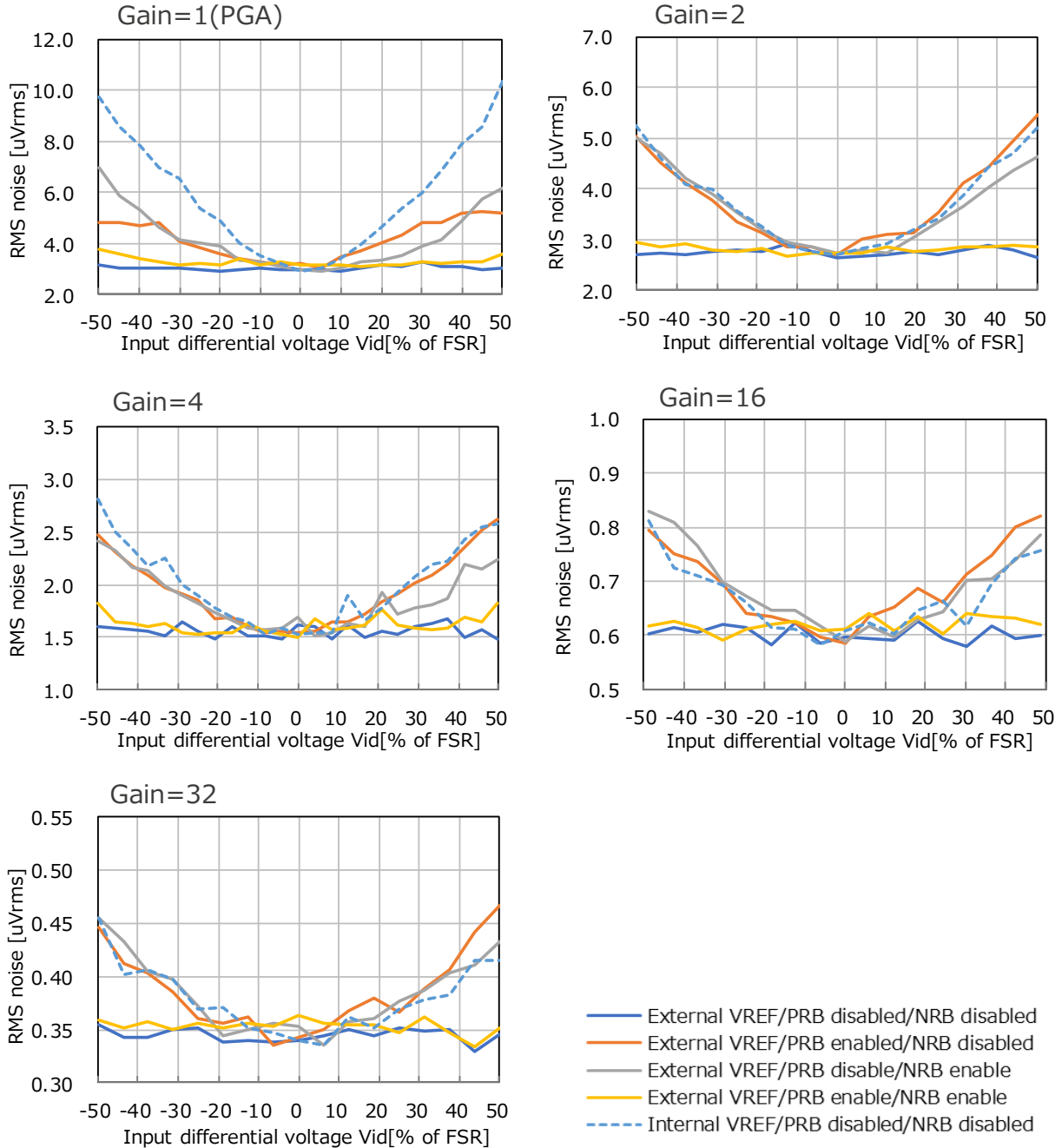
AVCC0=5V, Ta=25°C



2.8 RMS noise – Input differential voltage

AVCC0=5V, Ta=25°C

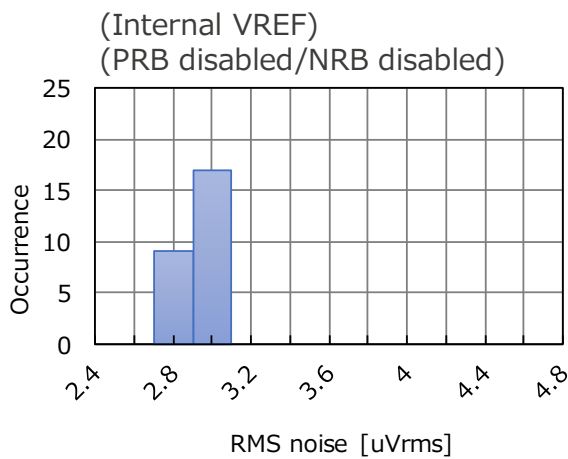
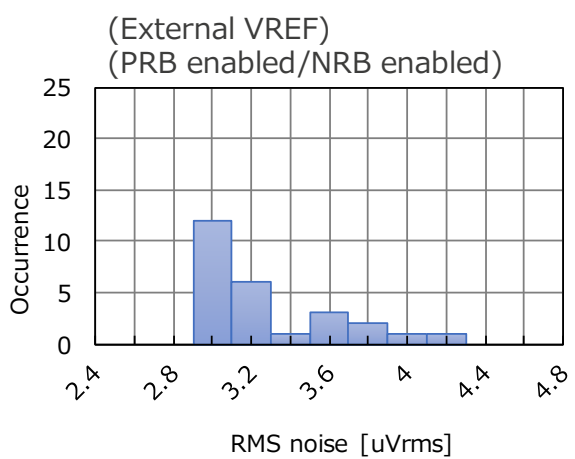
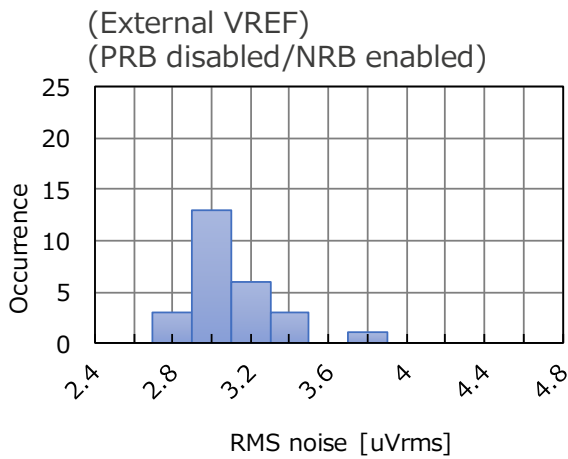
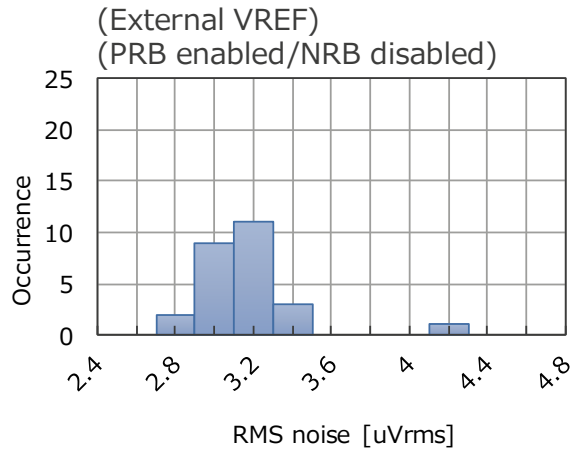
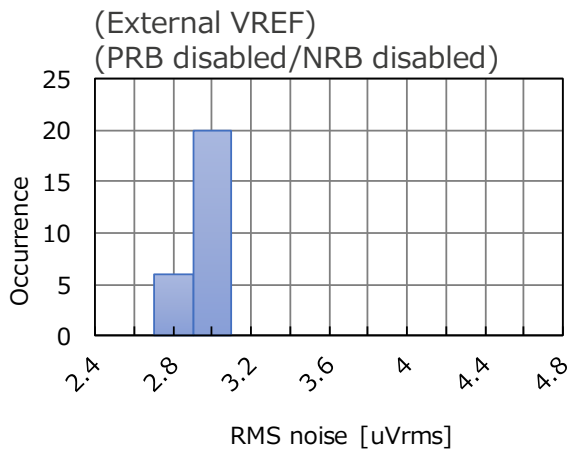
Normal mode, Data Rate=244sps, VREF=2.5V



2.9 RMS noise VREF dependence histogram

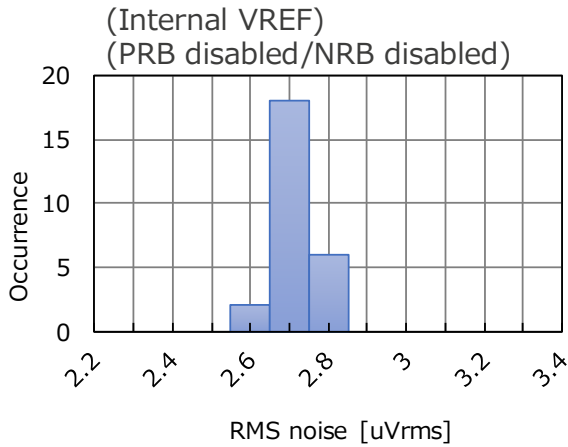
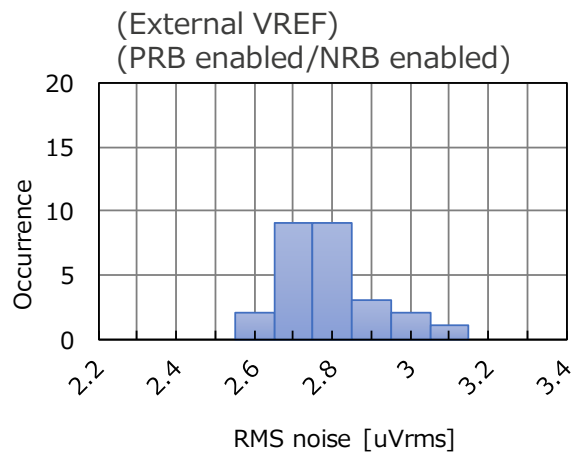
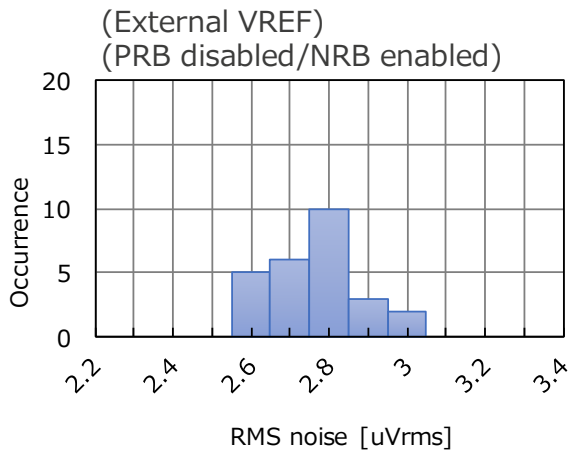
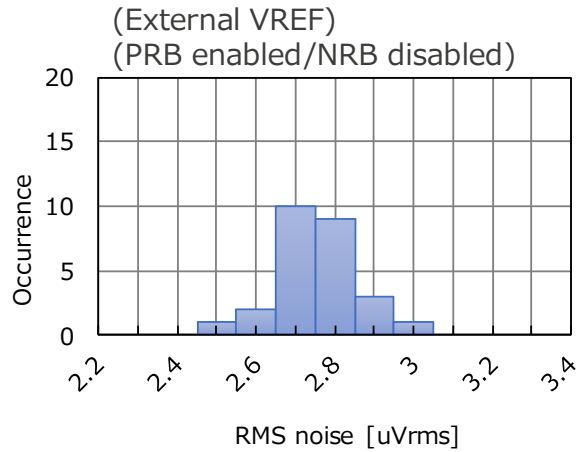
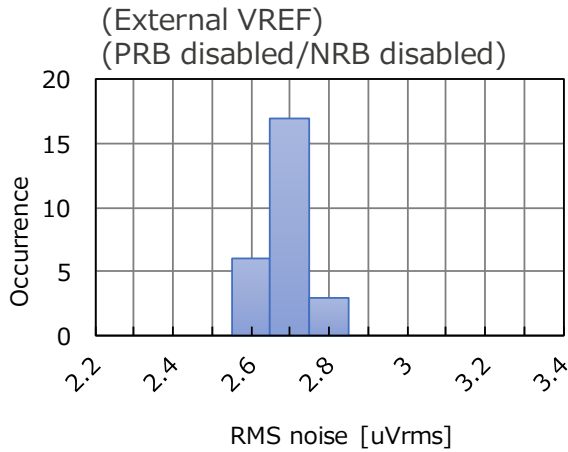
AVCC0=5V, Ta=25°C, n=26

Normal mode, Data Rate=244sps, VREF=2.5V, Vid=0V, Gain=1(PGA)



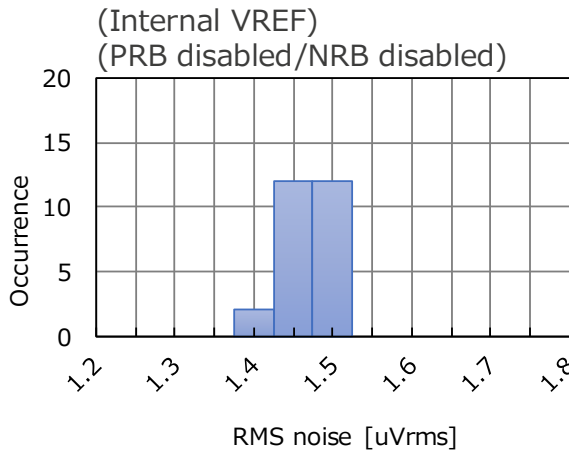
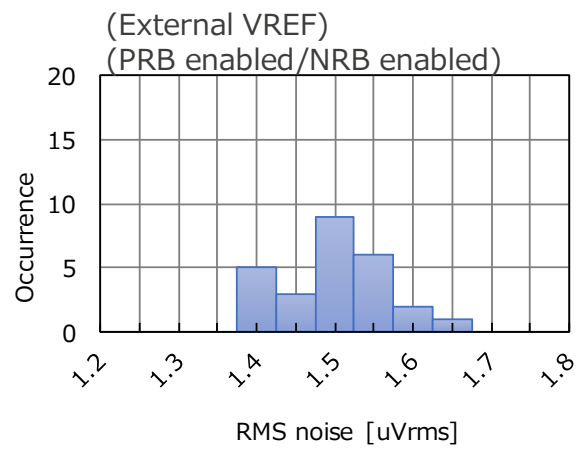
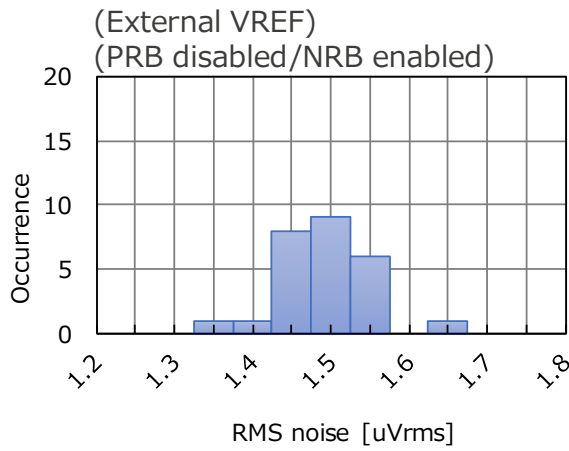
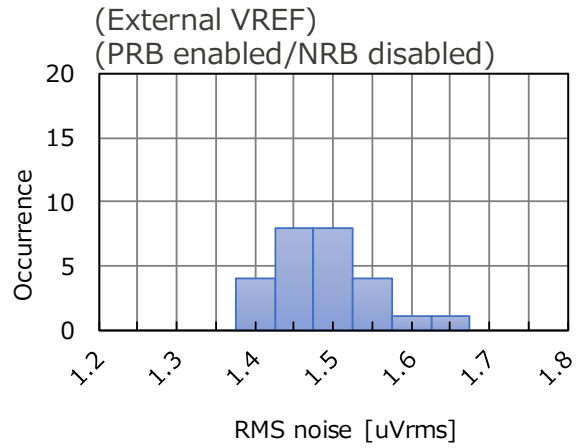
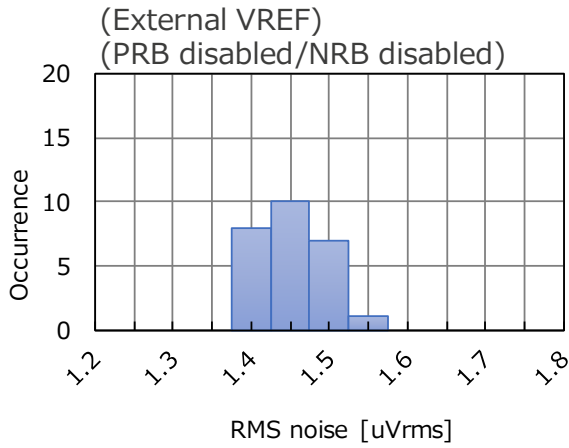
AVCC0=5V, Ta=25°C, n=26

Normal mode, Data Rate=244sps, VREF=2.5V, Vid=0V, Gain=4



AVCC0=5V, Ta=25°C, n=26

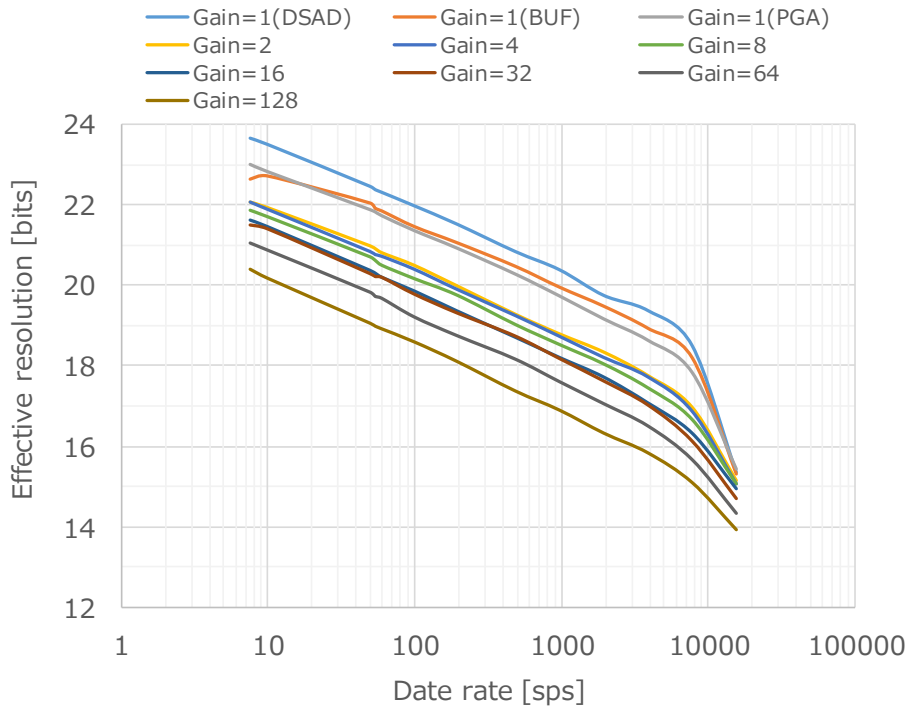
Normal mode, Data Rate=244sps, VREF=2.5V, Vid=0V, Gain=2



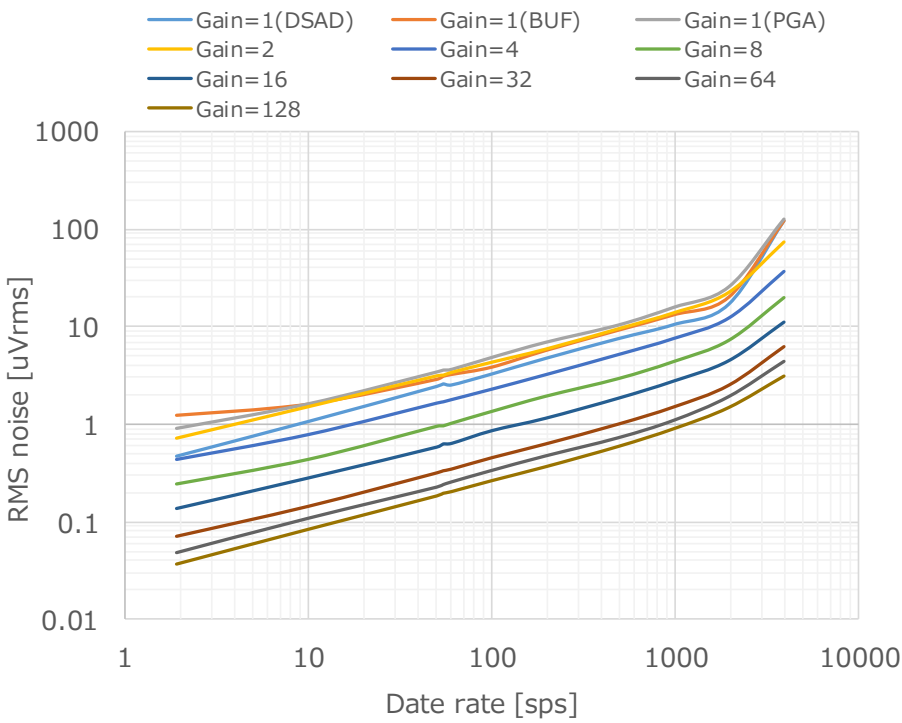
2.10 RMS noise – Date rate

AVCC0=5V, Ta=25°C
External VREF=2.5V

(Normal mode)



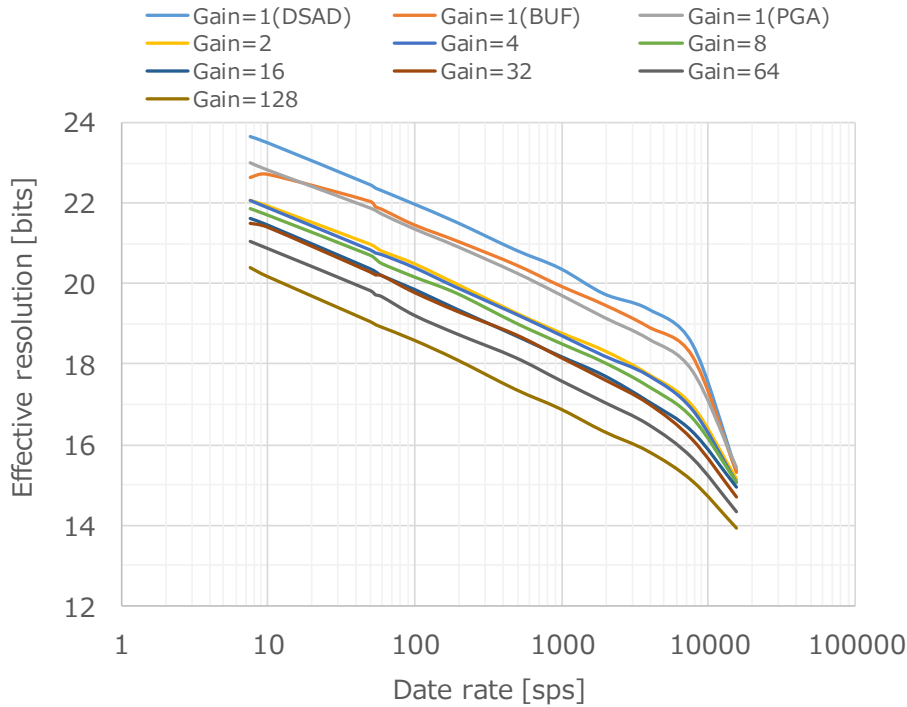
(Low power mode)



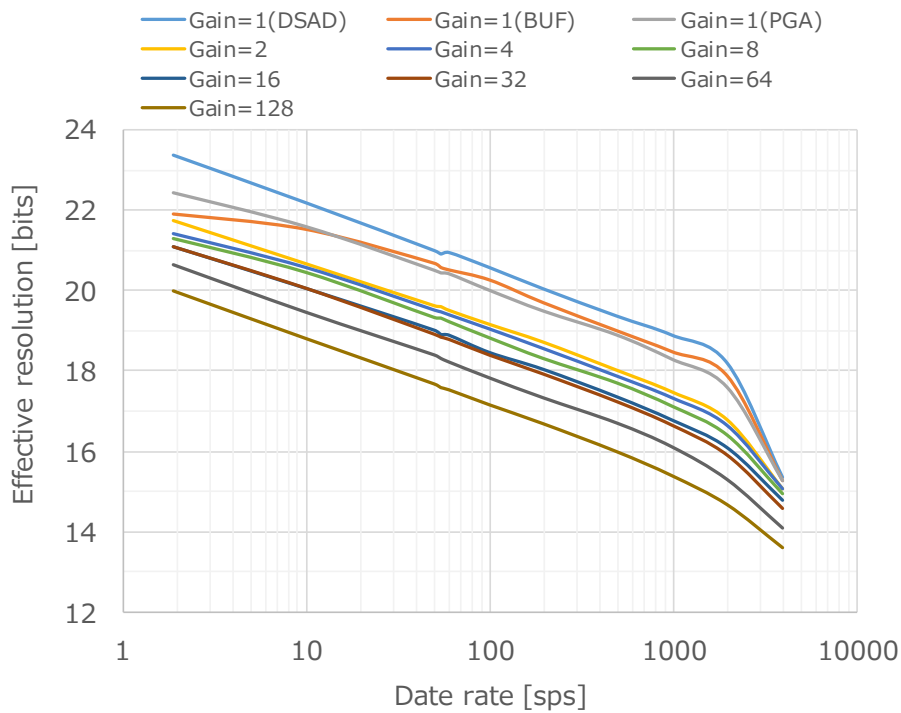
2.11 Effective resolution—Date rate

AVCC0=5V, Ta=25°C
External VREF=2.5V

(Normal mode)



(Low power mode)



2.12 Noise table (Normal mode)

AVCC0=5V, Ta=25°C, Normal mode, Modulator Clock=500kHz, External VREF=2.5V, AIN=0V

RMS noise[uVrms] (Peak-to-peak noise[uVpp])

Date rate [sps]	OSR	PGA gain									
		Gain=1 (DSAD)	Gain=1 (BUF)	Gain=1 (PGA)	Gain=2	Gain=4	Gain=8	Gain=16	Gain=32	Gain=64	Gain=128
7.6	65,536	0.383 (2.39)	0.740 (4.48)	0.601 (3.89)	0.563 (3.59)	0.284 (2.02)	0.166 (1.08)	0.097 (0.60)	0.052 (0.34)	0.036 (0.28)	0.029 (0.20)
10	50,048	0.426 (2.64)	0.701 (4.84)	0.680 (4.40)	0.618 (4.18)	0.322 (2.53)	0.185 (1.15)	0.108 (0.71)	0.056 (0.40)	0.041 (0.27)	0.033 (0.20)
50	9,984	0.878 (5.42)	1.117 (7.59)	1.308 (9.76)	1.196 (7.59)	0.667 (5.15)	0.369 (2.51)	0.230 (1.69)	0.121 (0.92)	0.084 (0.61)	0.072 (0.52)
54	9,216	0.929 (6.35)	1.225 (9.71)	1.359 (10.5)	1.254 (9.52)	0.702 (4.85)	0.392 (2.85)	0.240 (1.70)	0.127 (0.88)	0.090 (0.59)	0.076 (0.51)
60	8,320	0.973 (7.31)	1.279 (8.99)	1.450 (10.7)	1.345 (9.27)	0.723 (4.50)	0.426 (3.30)	0.258 (1.48)	0.129 (1.07)	0.093 (0.59)	0.080 (0.58)
100	4,992	1.228 (8.67)	1.673 (11.4)	1.873 (13.0)	1.673 (9.76)	0.904 (5.96)	0.536 (3.46)	0.327 (2.41)	0.172 (1.19)	0.128 (0.96)	0.100 (0.68)
195	2,560	1.681 (12.7)	2.206 (18.6)	2.530 (16.7)	2.378 (16.7)	1.277 (8.45)	0.710 (4.65)	0.460 (3.15)	0.238 (1.55)	0.176 (1.16)	0.139 (0.90)
488	1,024	2.697 (17.3)	3.311 (22.4)	3.954 (29.3)	3.881 (27.4)	2.007 (13.5)	1.175 (8.52)	0.723 (4.73)	0.355 (2.28)	0.264 (1.80)	0.231 (1.55)
977	512	3.691 (27.5)	4.740 (29.0)	5.758 (36.5)	5.442 (35.7)	2.871 (20.0)	1.656 (12.0)	1.025 (6.67)	0.522 (3.53)	0.389 (2.57)	0.321 (2.21)
1,953	256	5.734 (35.3)	6.572 (42.5)	8.535 (55.3)	7.438 (48.9)	4.130 (28.2)	2.308 (15.8)	1.434 (9.34)	0.768 (4.85)	0.567 (4.05)	0.476 (2.71)
3,906	128	7.446 (51.1)	9.607 (65.8)	12.32 (70.0)	11.15 (76.5)	5.778 (38.6)	3.476 (27.2)	2.237 (14.7)	1.162 (7.83)	0.831 (5.98)	0.669 (4.21)
7,813	64	13.60 (102)	15.91 (110)	21.39 (143)	19.22 (120)	10.43 (67.6)	5.971 (39.0)	3.760 (26.4)	2.161 (13.9)	1.482 (11.0)	1.112 (6.96)
15,625	32	120.5 (644)	117.5 (720)	112.5 (735)	67.81 (347)	36.42 (218)	17.96 (109)	9.766 (58.7)	5.812 (37.6)	3.726 (22.2)	2.498 (16.9)

Effective resolution [Bits] (Noise free resolution [Bits])

Date rate [sps]	OSR	PGA gain									
		Gain=1 (DSAD)	Gain=1 (BUF)	Gain=1 (PGA)	Gain=2	Gain=4	Gain=8	Gain=16	Gain=32	Gain=64	Gain=128
7.6	65,536	23.6 (21.0)	22.6 (20.0)	23.0 (20.3)	22.1 (19.4)	22.1 (19.2)	21.8 (19.1)	21.6 (19.0)	21.5 (18.8)	21.0 (18.1)	20.4 (17.6)
10	50,048	23.5 (20.9)	22.7 (19.9)	22.8 (20.1)	22.0 (19.2)	21.9 (18.9)	21.7 (19.1)	21.5 (18.7)	21.4 (18.6)	20.9 (18.2)	20.2 (17.6)
50	9,984	22.4 (19.8)	22.0 (19.3)	21.9 (19.0)	21.0 (18.3)	20.8 (17.9)	20.7 (17.9)	20.4 (17.5)	20.3 (17.4)	19.8 (17.0)	19.0 (16.2)
54	9,216	22.4 (19.6)	21.9 (18.9)	21.8 (18.9)	20.9 (18.0)	20.8 (18.0)	20.6 (17.7)	20.3 (17.5)	20.2 (17.5)	19.7 (17.0)	19.0 (16.2)
60	8,320	22.3 (19.4)	21.8 (19.0)	21.7 (18.8)	20.8 (18.0)	20.7 (18.1)	20.5 (17.5)	20.2 (17.7)	20.2 (17.2)	19.7 (17.0)	18.9 (16.1)
100	4,992	22.0 (19.1)	21.5 (18.7)	21.4 (18.6)	20.5 (18.0)	20.4 (17.7)	20.2 (17.5)	19.9 (17.0)	19.8 (17.0)	19.2 (16.3)	18.6 (15.8)
195	2,560	21.5 (18.6)	21.1 (18.0)	21.0 (18.2)	20.0 (17.2)	19.9 (17.2)	19.8 (17.0)	19.4 (16.6)	19.3 (16.6)	18.8 (16.0)	18.1 (15.4)
488	1,024	20.8 (18.1)	20.5 (17.7)	20.3 (17.4)	19.3 (16.5)	19.3 (16.5)	19.0 (16.2)	18.7 (16.0)	18.8 (16.1)	18.2 (15.4)	17.4 (14.6)
977	512	20.4 (17.5)	20.0 (17.3)	19.7 (17.1)	18.8 (16.1)	18.7 (15.9)	18.5 (15.7)	18.2 (15.5)	18.2 (15.4)	17.6 (14.9)	16.9 (14.1)
1,953	256	19.7 (17.1)	19.5 (16.8)	19.2 (16.5)	18.4 (15.6)	18.2 (15.4)	18.1 (15.3)	17.7 (15.0)	17.6 (15.0)	17.1 (14.2)	16.3 (13.8)
3,906	128	19.4 (16.6)	18.9 (16.2)	18.6 (16.1)	17.8 (15.0)	17.7 (15.0)	17.5 (14.5)	17.1 (14.4)	17.0 (14.3)	16.5 (13.7)	15.8 (13.2)
7,813	64	18.5 (15.6)	18.2 (15.4)	17.8 (15.1)	17.0 (14.3)	16.9 (14.2)	16.7 (14.0)	16.3 (13.5)	16.1 (13.5)	15.7 (12.8)	15.1 (12.5)
15,625	32	15.3 (12.9)	15.3 (12.7)	15.4 (12.7)	15.2 (12.8)	15.1 (12.5)	15.1 (12.5)	15.0 (12.4)	14.7 (12.0)	14.4 (11.8)	13.9 (11.2)

2.13 Noise table (Low power mode)

AVCC0=5V, Ta=25°C, Low Power mode, Modulator Clock=125kHz, External VREF=2.5V, AIN=0V

RMS noise[uVrms] (Peak-to-peak noise[uVpp])

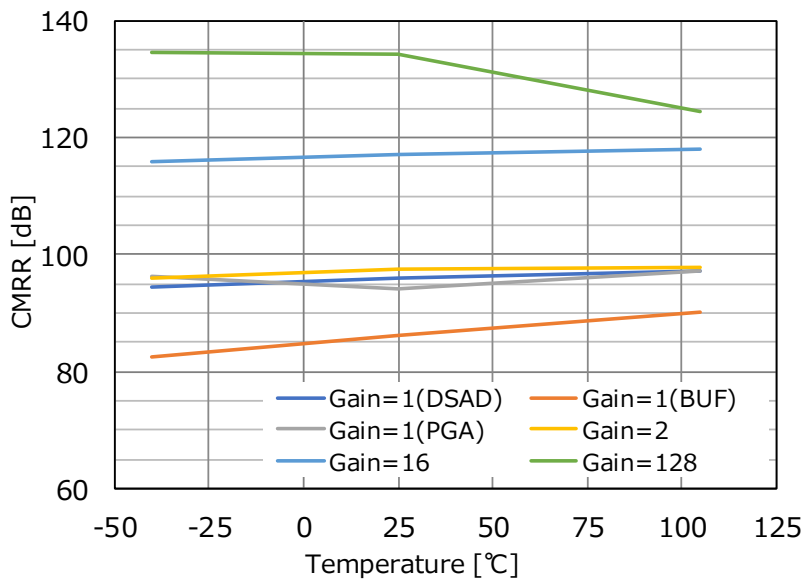
Date rate [sps]	OSR	PGA gain									
		Gain=1 (DSAD)	Gain=1 (BUF)	Gain=1 (PGA)	Gain=2	Gain=4	Gain=8	Gain=16	Gain=32	Gain=64	Gain=128
1.9	65,536	0.463 (3.29)	1.236 (6.58)	0.892 (5.38)	0.708 (4.63)	0.444 (2.62)	0.245 (1.72)	0.140 (0.90)	0.070 (0.47)	0.048 (0.34)	0.038 (0.25)
10	12,512	1.053 (7.03)	1.606 (11.9)	1.596 (11.4)	1.492 (10.6)	0.797 (5.27)	0.437 (2.86)	0.286 (1.79)	0.143 (1.00)	0.109 (0.72)	0.085 (0.61)
50	2,496	2.412 (15.7)	2.883 (18.4)	3.390 (21.7)	3.093 (22.5)	1.669 (11.0)	0.954 (5.96)	0.592 (3.86)	0.317 (2.35)	0.228 (1.69)	0.187 (1.22)
54	2,304	2.558 (19.4)	3.098 (20.5)	3.544 (23.9)	3.139 (19.4)	1.719 (11.3)	0.962 (6.39)	0.637 (3.92)	0.333 (2.12)	0.242 (1.81)	0.199 (1.39)
60	2,080	2.491 (16.3)	3.230 (20.8)	3.598 (26.4)	3.348 (25.0)	1.810 (13.6)	1.024 (7.38)	0.645 (4.50)	0.346 (2.30)	0.257 (1.88)	0.207 (1.37)
100	1,248	3.237 (21.7)	3.843 (26.6)	4.794 (32.5)	4.274 (27.1)	2.319 (15.3)	1.357 (9.35)	0.872 (6.37)	0.454 (2.98)	0.338 (2.29)	0.268 (1.83)
195	640	4.663 (37.7)	5.666 (37.7)	6.826 (46.5)	5.799 (39.7)	3.245 (21.3)	1.930 (12.9)	1.164 (7.50)	0.627 (4.61)	0.474 (3.31)	0.371 (2.68)
488	256	7.451 (46.6)	9.151 (62.5)	10.30 (70.9)	9.404 (59.6)	5.216 (35.7)	2.934 (20.2)	1.869 (13.6)	1.006 (6.13)	0.729 (5.46)	0.599 (4.56)
977	128	10.37 (72.4)	13.13 (83.1)	15.63 (111)	13.71 (93.3)	7.605 (63.0)	4.383 (30.3)	2.796 (18.0)	1.510 (9.78)	1.099 (7.60)	0.908 (7.23)
1,953	64	16.80 (117)	19.92 (153)	25.41 (177)	22.23 (138)	12.30 (94.9)	7.226 (50.9)	4.520 (30.6)	2.531 (16.2)	1.927 (13.6)	1.499 (11.1)
3,906	32	120.9 (720)	120.4 (761)	126.6 (634)	73.29 (507)	36.82 (216)	19.83 (124)	11.22 (78.4)	6.332 (39.1)	4.427 (27.3)	3.143 (20.0)

Effective resolution [Bits] (Noise free resolution [Bits])

Date rate [sps]	OSR	PGA gain									
		Gain=1 (DSAD)	Gain=1 (BUF)	Gain=1 (PGA)	Gain=2	Gain=4	Gain=8	Gain=16	Gain=32	Gain=64	Gain=128
1.9	65,536	23.4 (20.5)	21.9 (19.5)	22.4 (19.8)	21.8 (19.0)	21.4 (18.9)	21.3 (18.5)	21.1 (18.4)	21.1 (18.4)	20.6 (17.8)	20.0 (17.3)
10	12,512	22.2 (19.4)	21.5 (18.6)	21.6 (18.7)	20.7 (17.9)	20.6 (17.9)	20.5 (17.7)	20.1 (17.4)	20.1 (17.3)	19.5 (16.7)	18.8 (16.0)
50	2,496	21.0 (18.3)	20.7 (18.0)	20.5 (17.8)	19.6 (16.8)	19.5 (16.8)	19.3 (16.7)	19.0 (16.3)	18.9 (16.0)	18.4 (15.5)	17.7 (15.0)
54	2,304	20.9 (18.0)	20.6 (17.8)	20.4 (17.7)	19.6 (17.0)	19.5 (16.8)	19.3 (16.6)	18.9 (16.3)	18.8 (16.2)	18.3 (15.4)	17.6 (14.8)
60	2,080	20.9 (18.2)	20.5 (17.8)	20.4 (17.5)	19.5 (16.6)	19.4 (16.5)	19.2 (16.4)	18.9 (16.1)	18.8 (16.1)	18.2 (15.3)	17.5 (14.8)
100	1,248	20.6 (17.8)	20.3 (17.5)	20.0 (17.2)	19.2 (16.5)	19.0 (16.3)	18.8 (16.0)	18.5 (15.6)	18.4 (15.7)	17.8 (15.1)	17.2 (14.4)
195	640	20.0 (17.0)	19.7 (17.0)	19.5 (16.7)	18.7 (15.9)	18.6 (15.8)	18.3 (15.6)	18.0 (15.4)	17.9 (15.1)	17.3 (14.5)	16.7 (13.8)
488	256	19.4 (16.7)	19.0 (16.2)	18.9 (16.1)	18.0 (15.4)	17.9 (15.1)	17.7 (14.9)	17.4 (14.5)	17.3 (14.6)	16.7 (13.8)	16.0 (13.1)
977	128	18.9 (16.1)	18.5 (15.8)	18.3 (15.4)	17.5 (14.7)	17.3 (14.3)	17.1 (14.3)	16.8 (14.1)	16.7 (14.0)	16.1 (13.3)	15.4 (12.4)
1,953	64	18.2 (15.4)	17.9 (14.9)	17.6 (14.8)	16.8 (14.2)	16.6 (13.7)	16.4 (13.6)	16.1 (13.3)	15.9 (13.2)	15.3 (12.5)	14.7 (11.8)
3,906	32	15.3 (12.8)	15.3 (12.6)	15.3 (12.9)	15.1 (12.3)	15.1 (12.5)	14.9 (12.3)	14.8 (12.0)	14.6 (12.0)	14.1 (11.5)	13.6 (10.9)

2.14 Common Mode Rejection Ratio (CMRR)

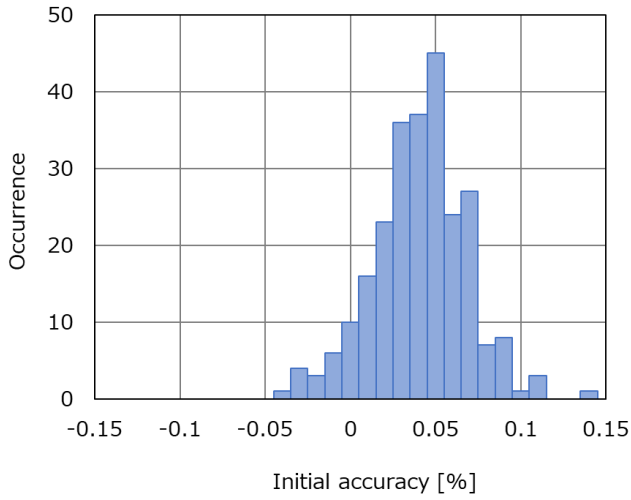
AVCC0=5V



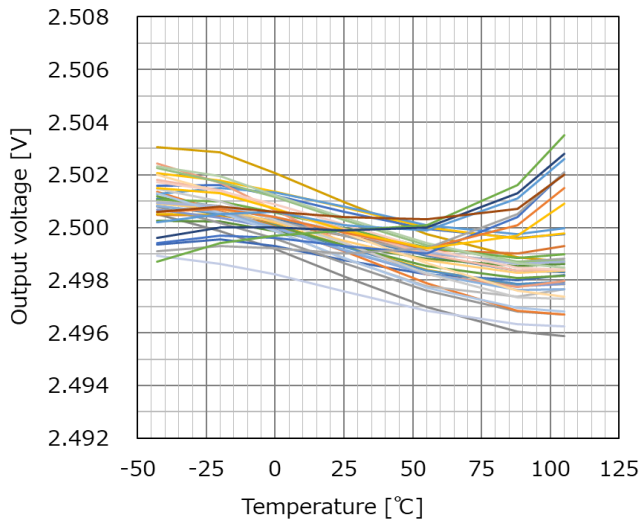
3. Voltage Reference (VREF)

3.1 Initial accuracy, Temperature drift, Load regulation

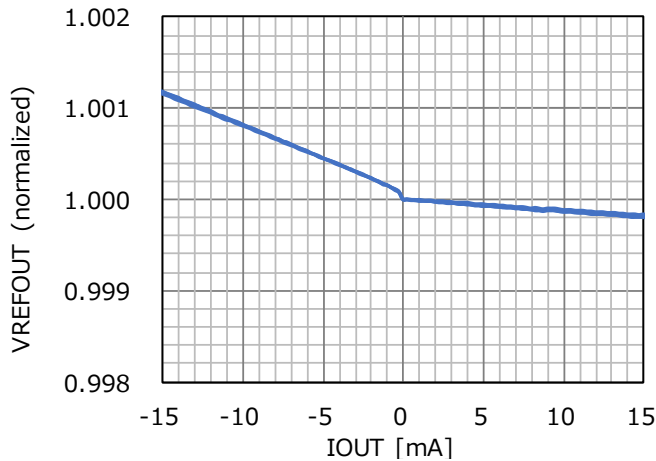
AVCC0=5V, Ta=25°C



AVCC0=5V



(Ta=25°C)

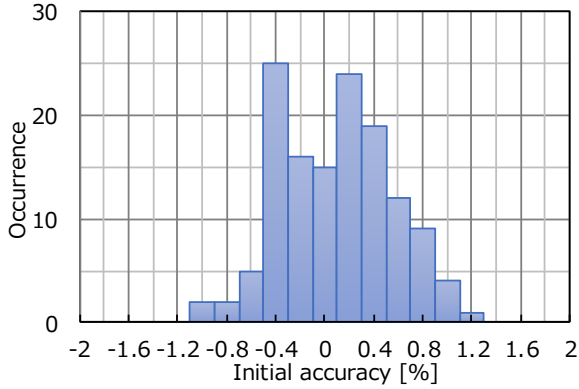


4. Excitation Current Source (IEXC)

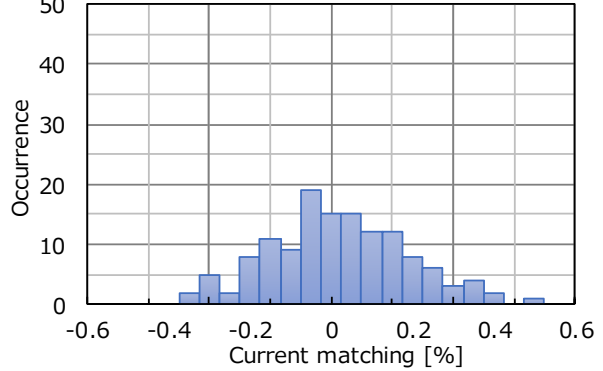
4.1 Initial accuracy, Current matching

AVCC0=5V, Ta=25°C

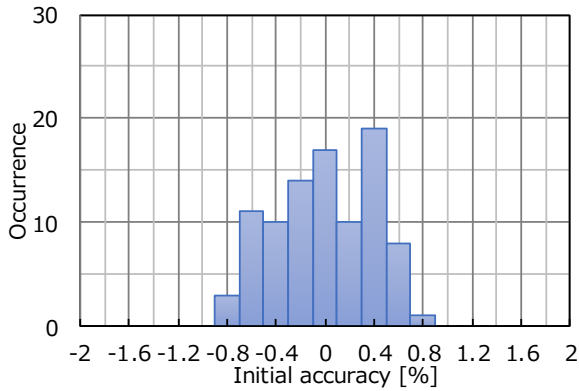
(Iexc=50uA, n=134)



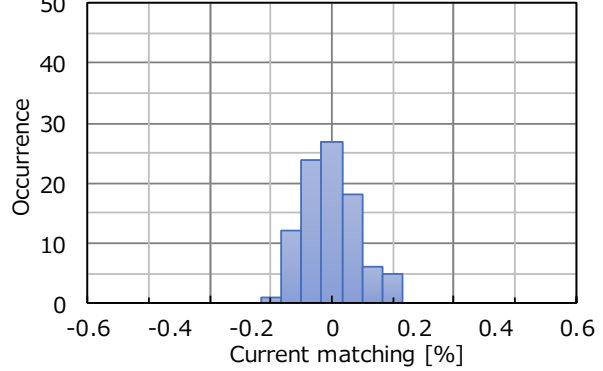
(Iexc=50uA, n=134)



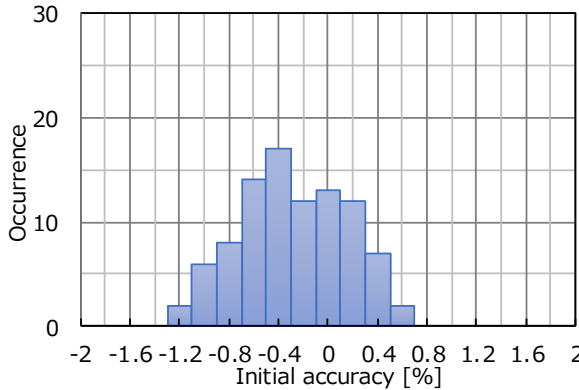
(Iexc=250uA, n=93)



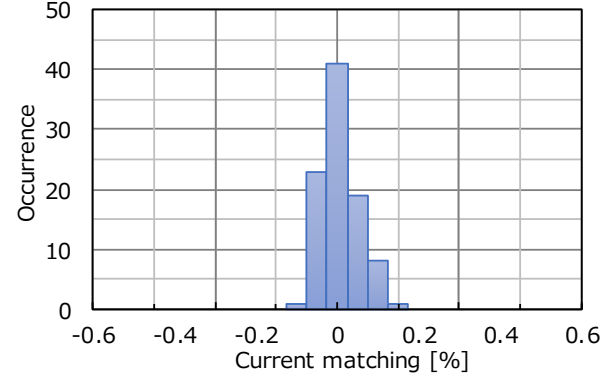
(Iexc=250uA, n=93)



(Iexc=1000uA, n=93)

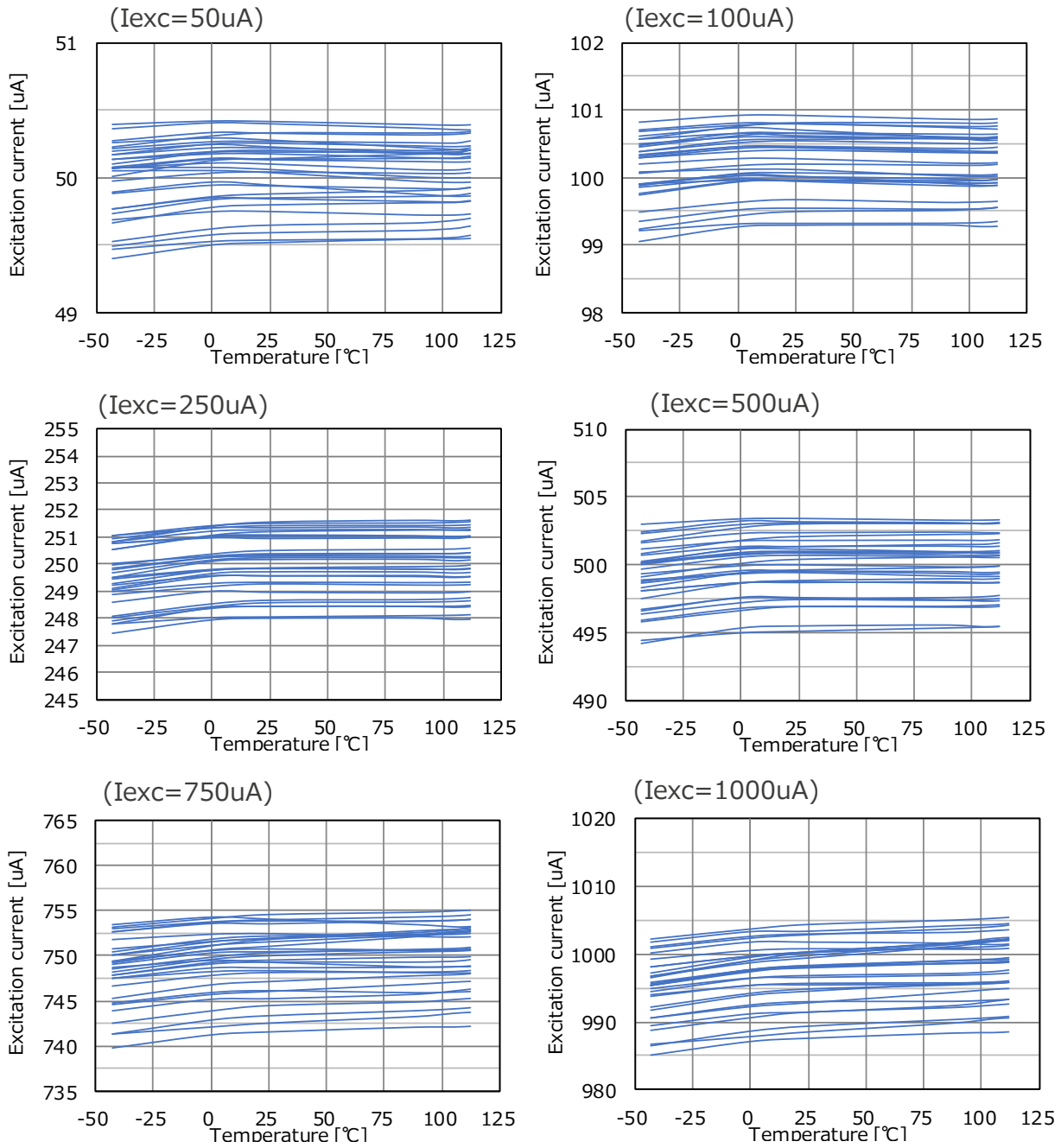


(Iexc=1000uA, n=93)



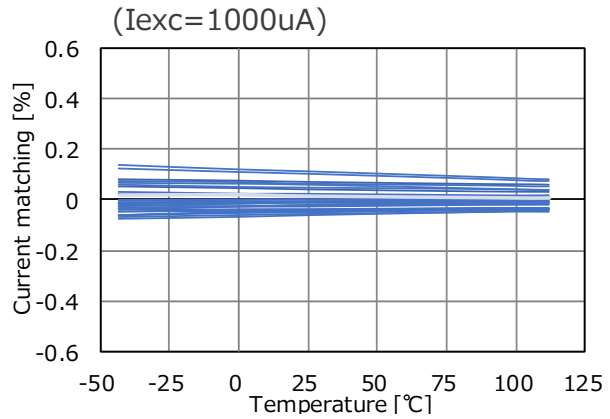
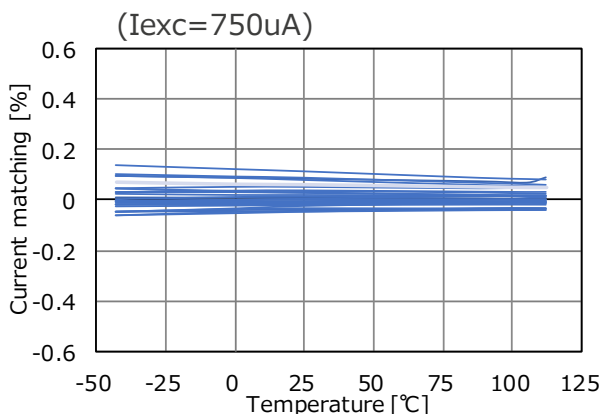
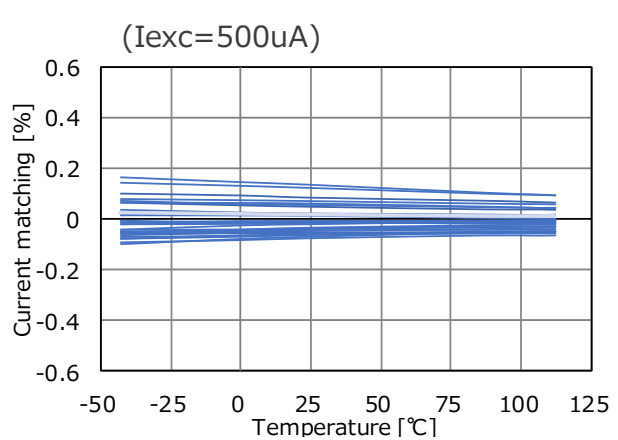
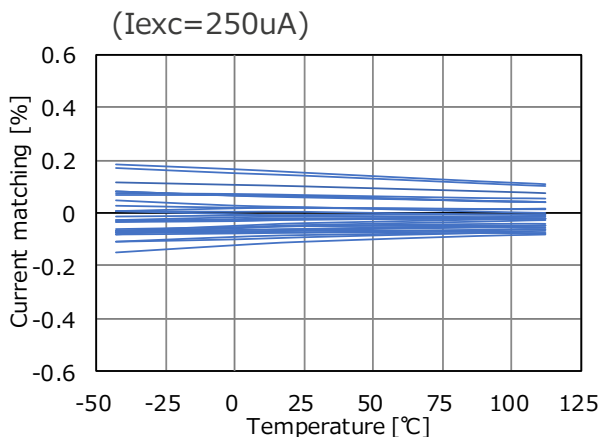
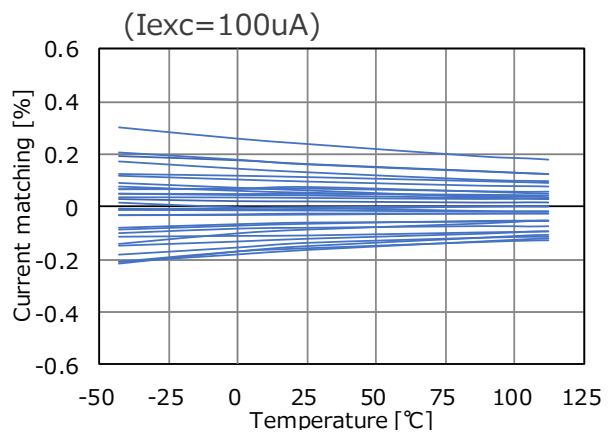
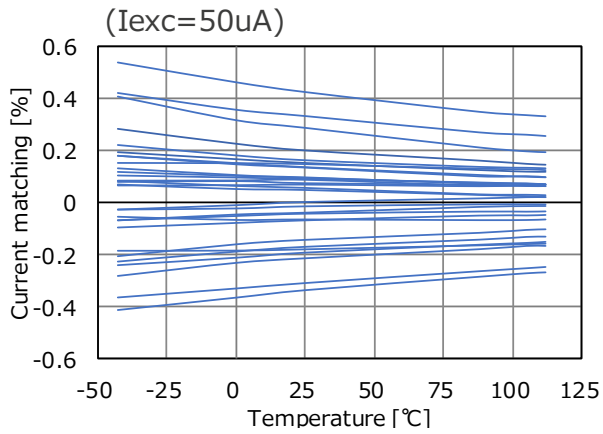
4.2 Temperature drift

AVCC0=5V, n=30



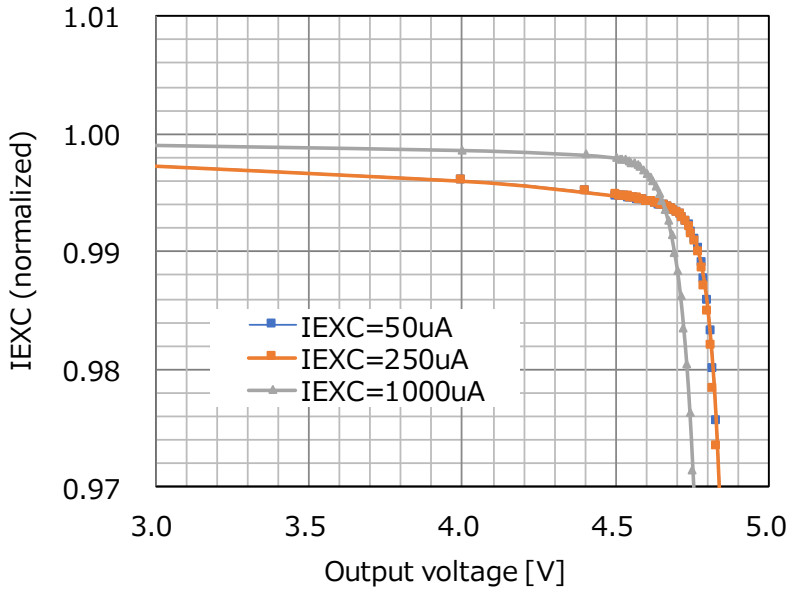
4.3 Drift matching

AVCC0=5V, n=30



4.4 Load regulation

AVCC0=5V, Ta=25°C

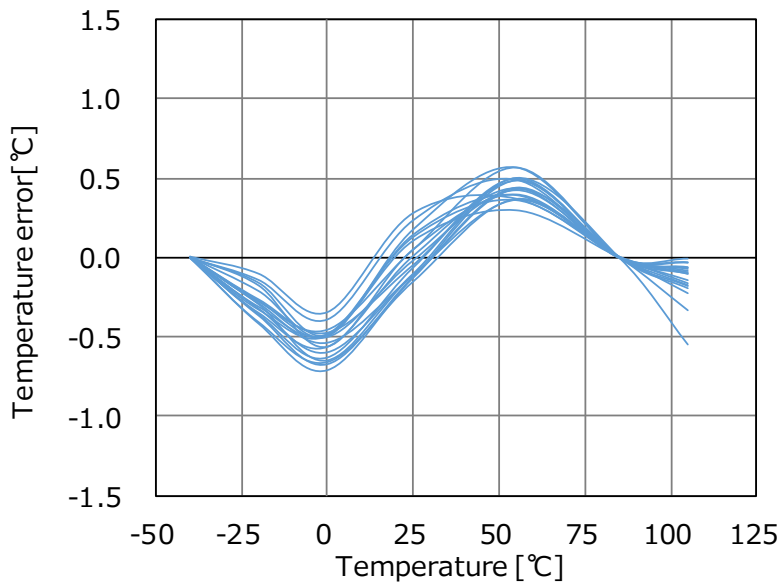


5. Temperature sensor (TEMPS)

5.1 Temperature error

AVCC0=5V

(n=18, Not include measurement uncertainty)

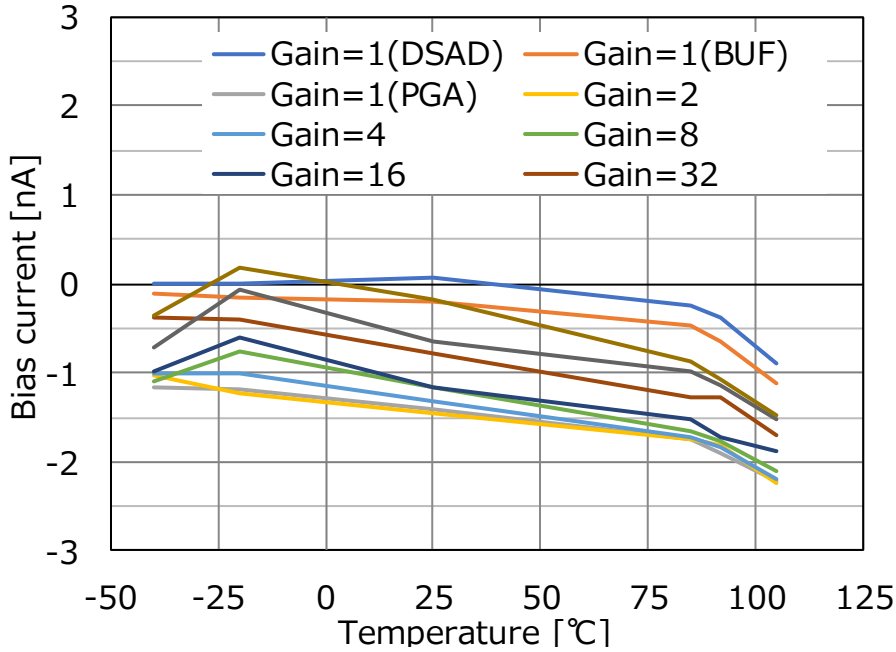


6. 24-bit Delta-Sigma A/D Converter Analog Input

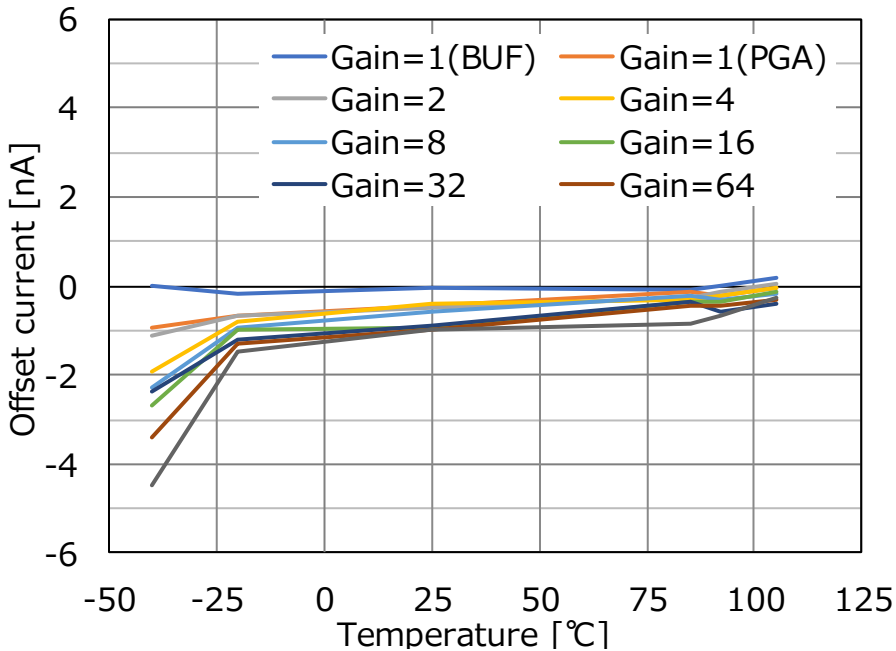
6.1 Input current temperature dependence

AVCC0=5V, Normal mode

(Vic=2.5V, Vid=0)

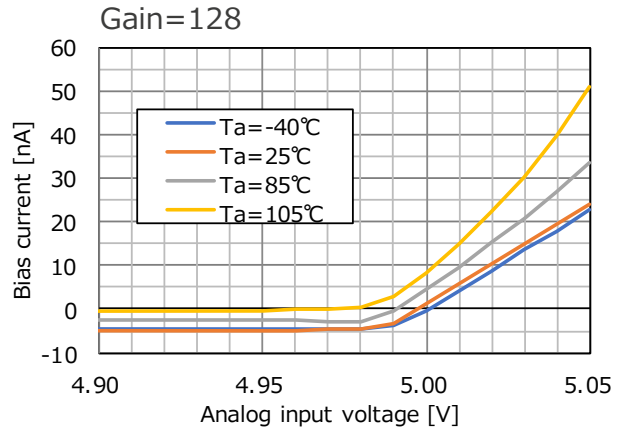
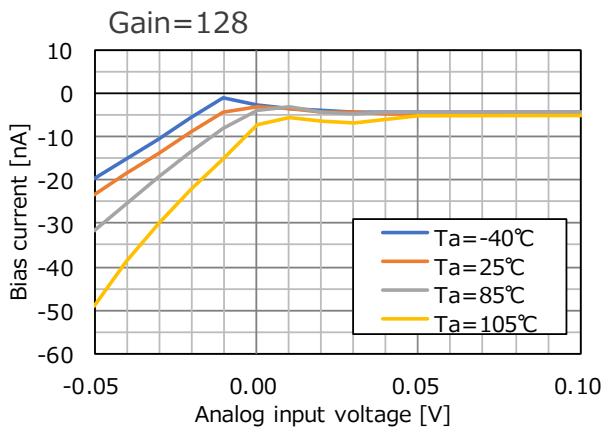
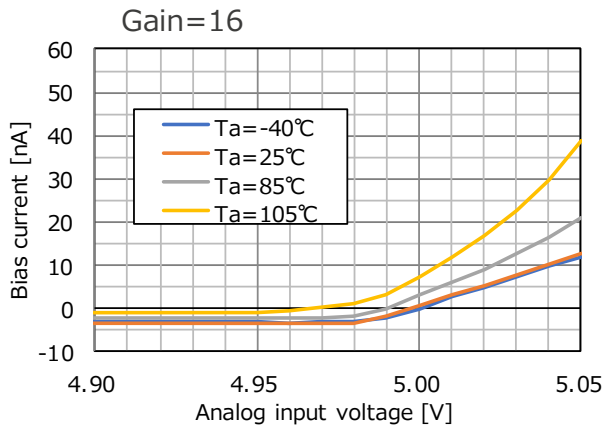
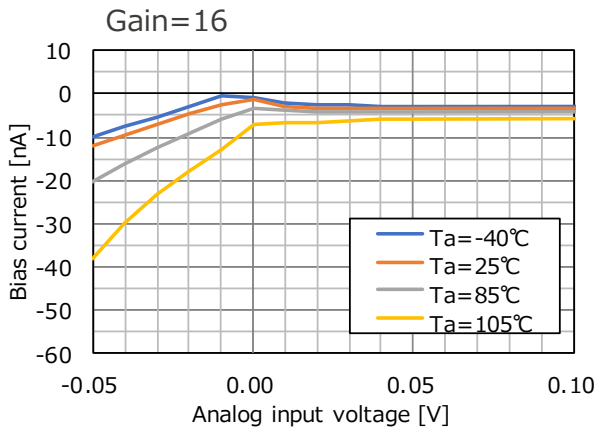
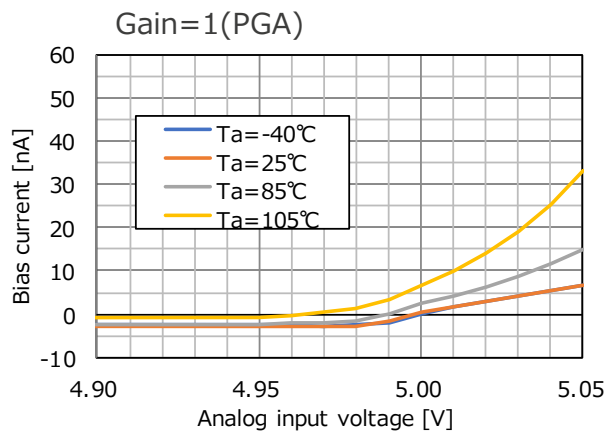
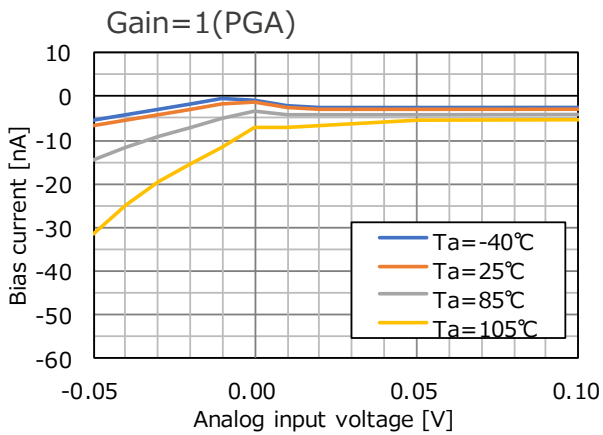
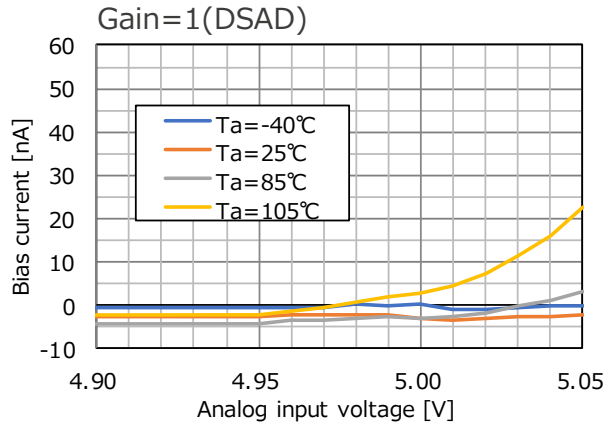
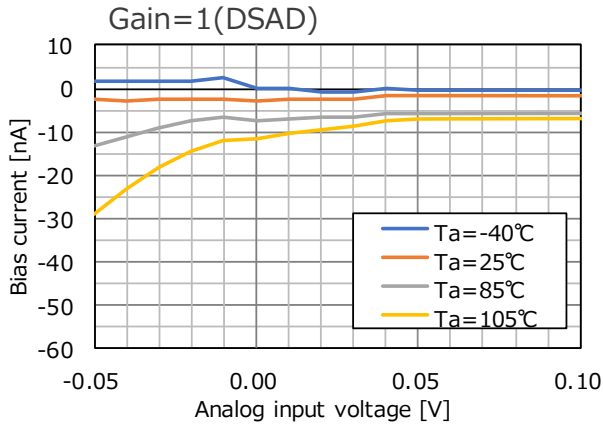


(Vic=2.5V, Vid=0V)



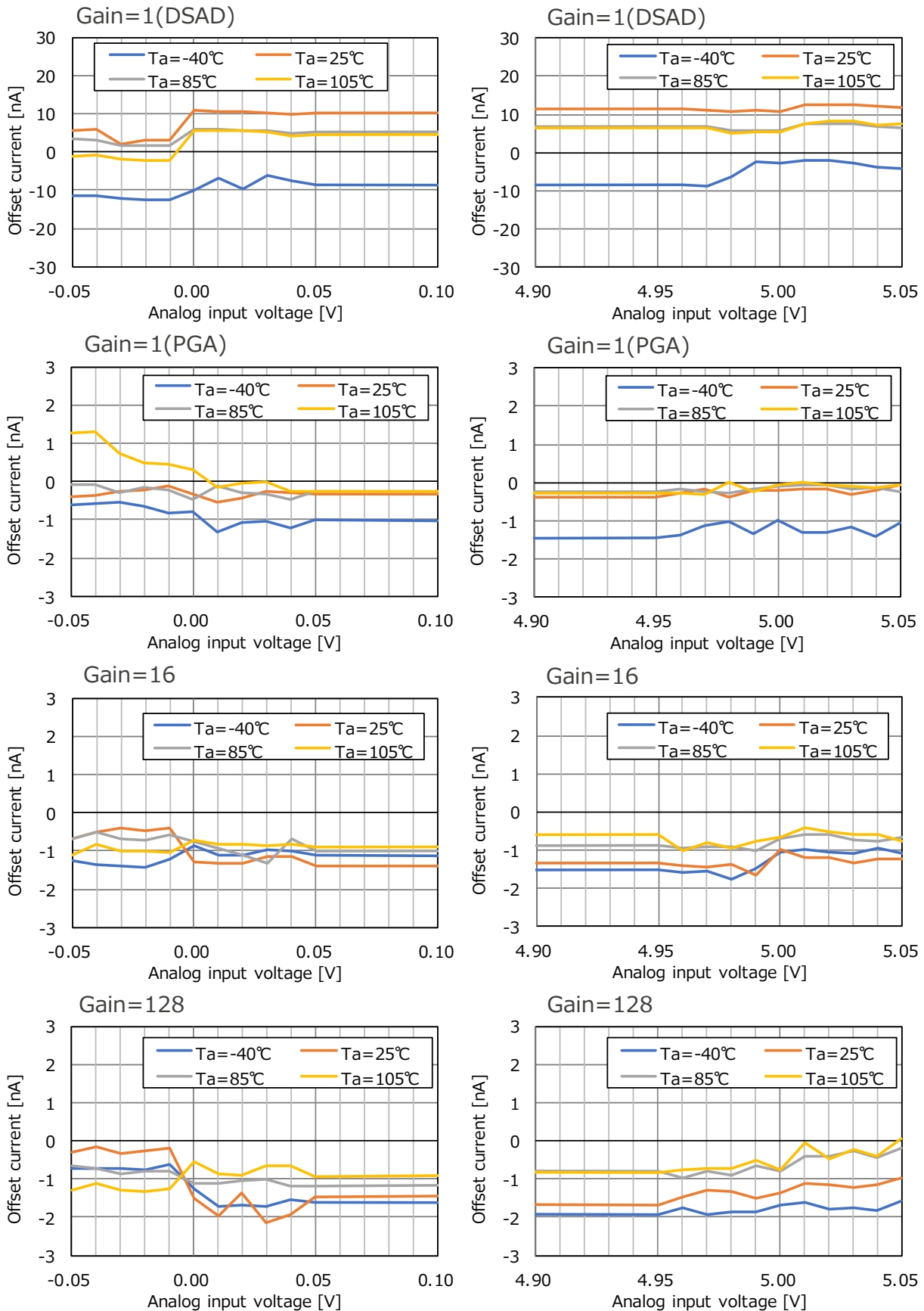
6.2 Input bias current – Input voltage

AVCC0=5V, Normal mode



6.3 Input offset current - Input voltage

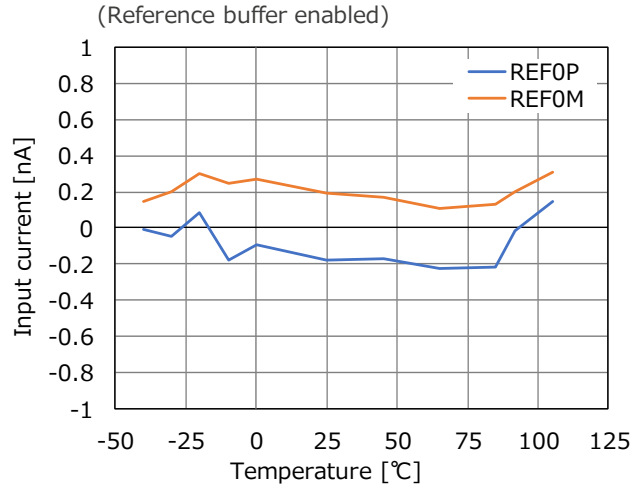
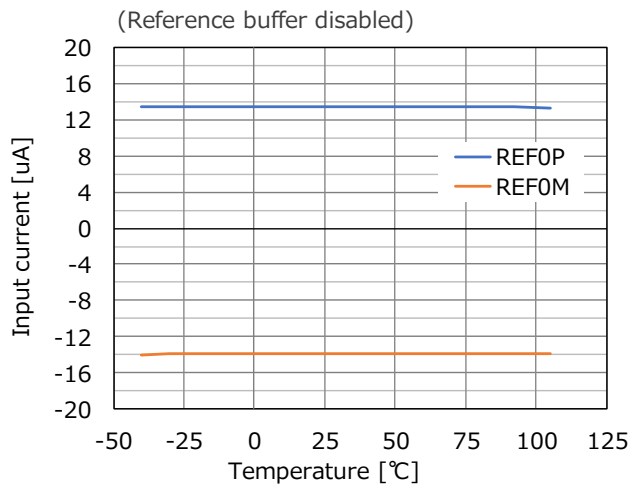
AVCC0=5V, Normal mode



7. External Reference Input

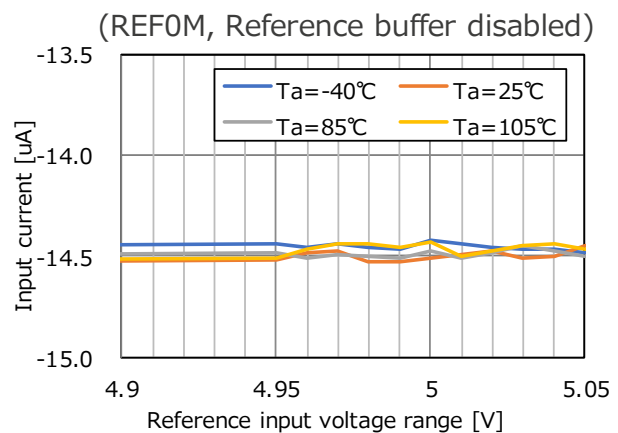
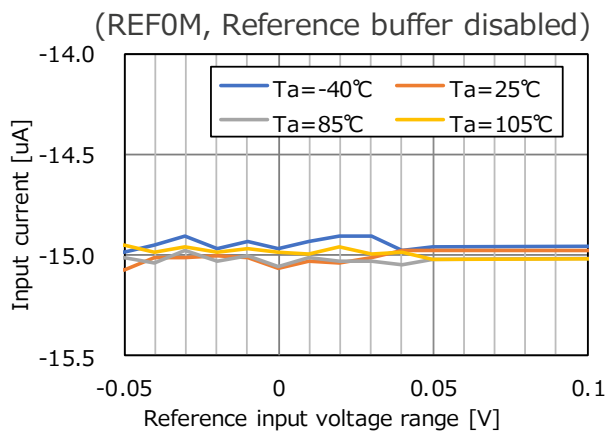
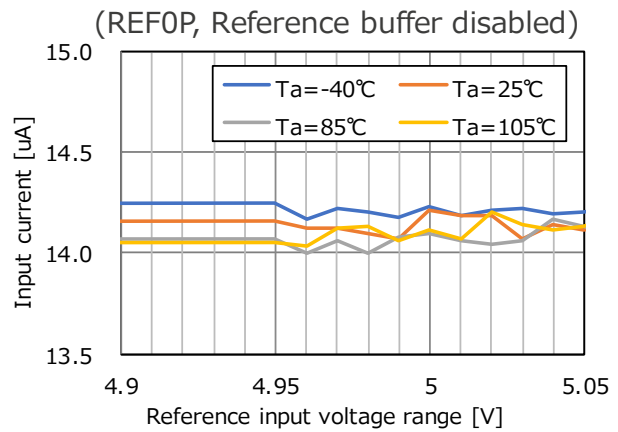
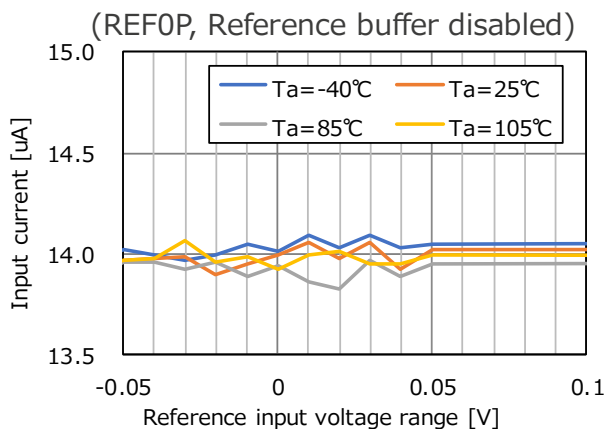
7.1 Input current temperature dependence

AVCC0=5V, VREF=2.5V



7.2 Input current – Input voltage

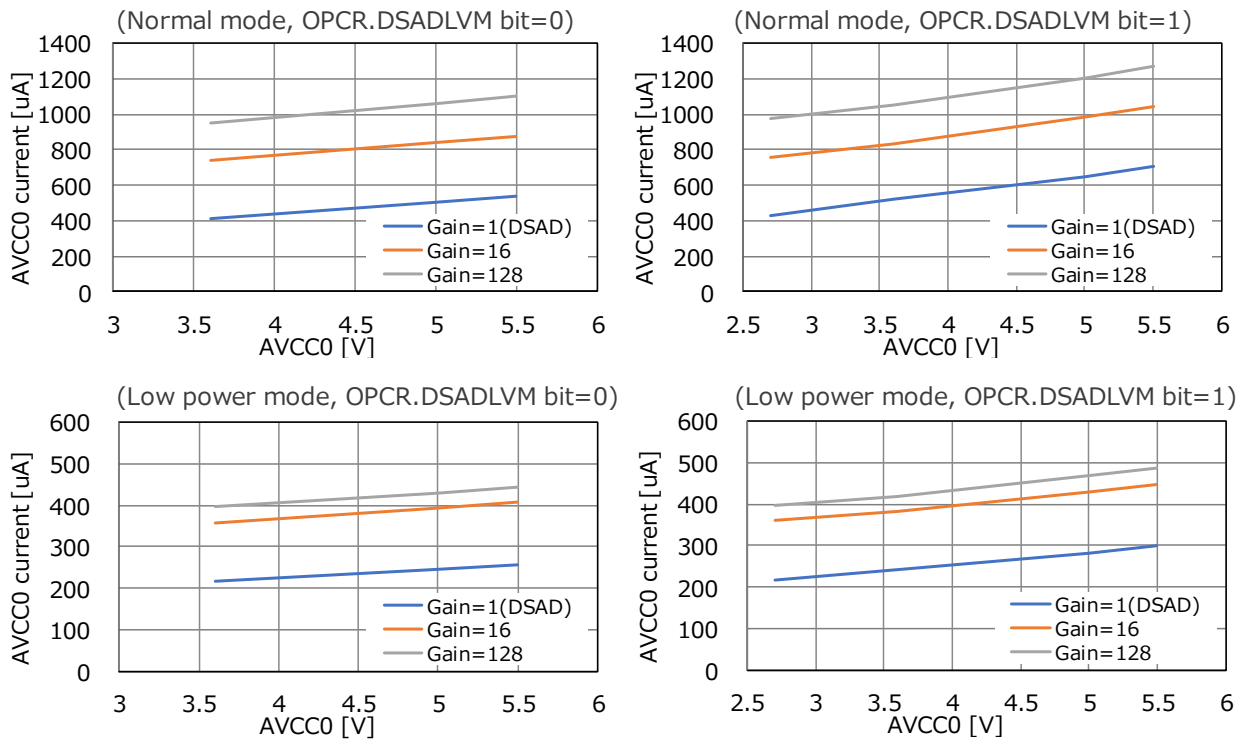
AVCC0=5V, VREF=2.5V



8. Operating Current

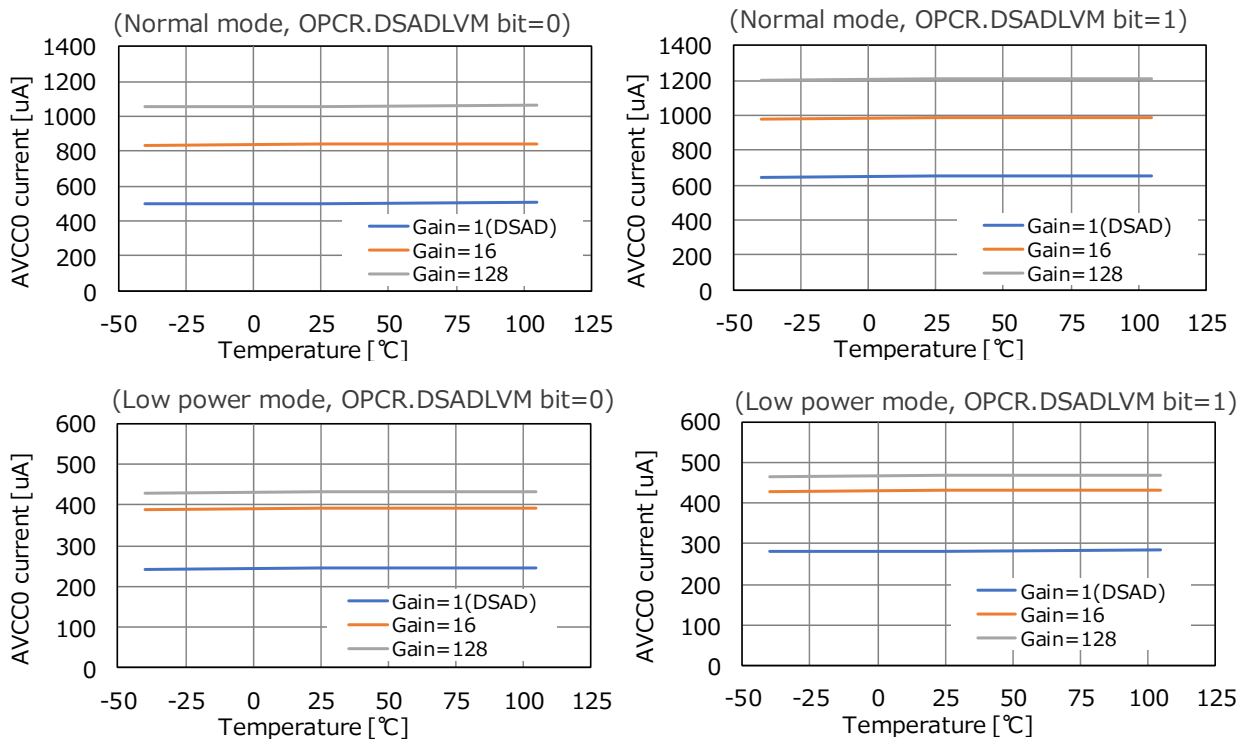
8.1 24-bit Delta-Sigma A/D converter operating current – AVCC0

Ta=25°C

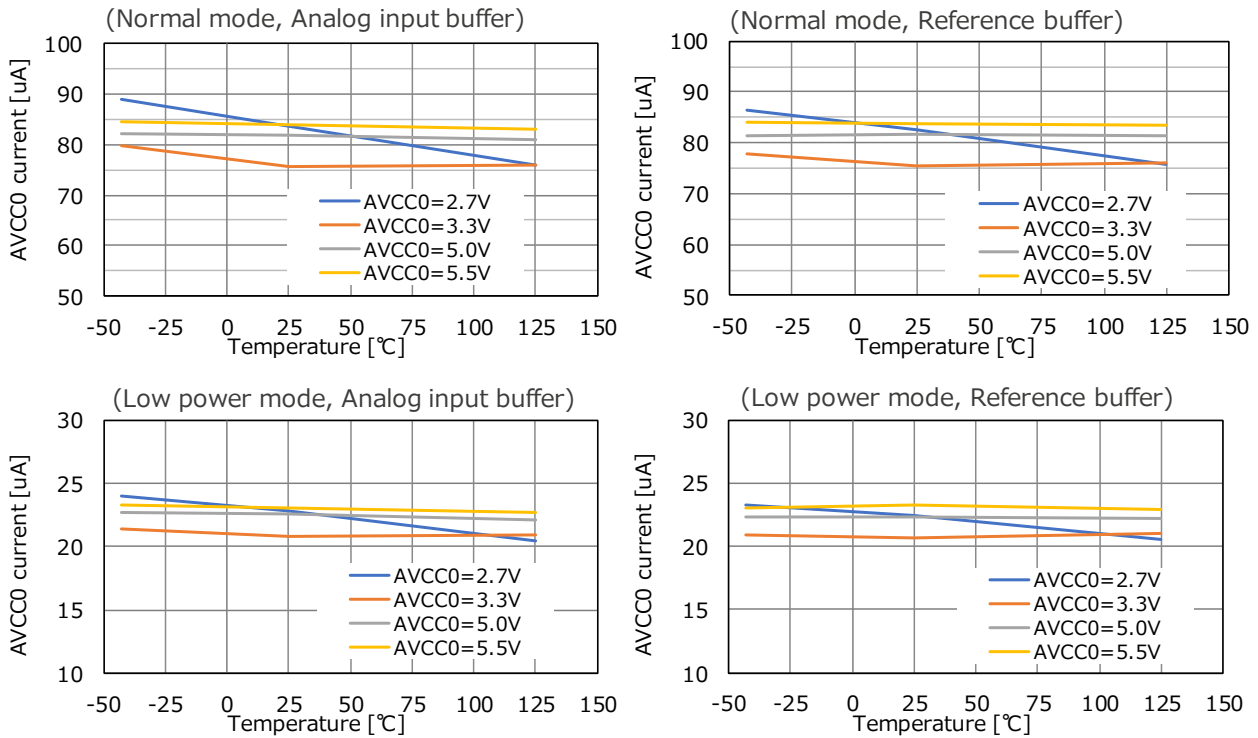


8.2 24-bit Delta-Sigma A/D converter operating current temperature dependence

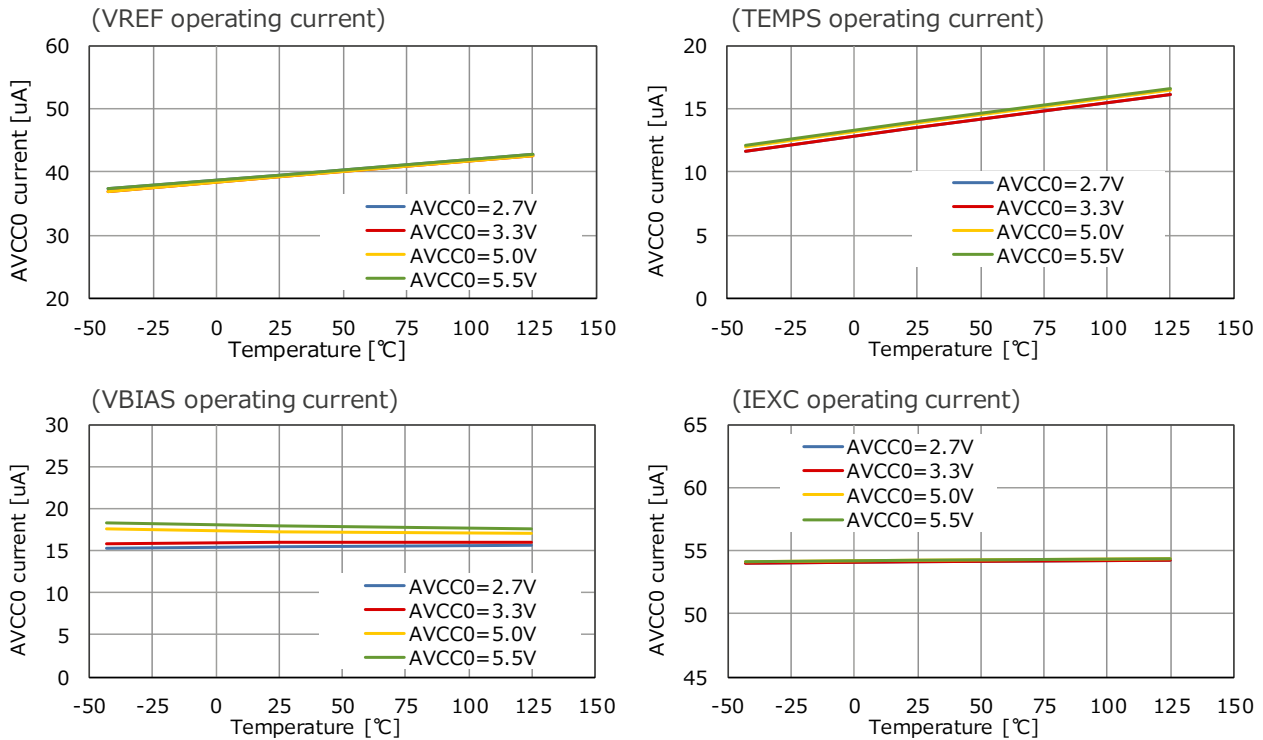
AVCC0=5V



8.3 Buffer operating current temperature dependence



8.4 Voltage reference (VREF), Temperature sensor (TEMPS), Bias voltage generator (VBIAS), Excitation current source (IEXC)

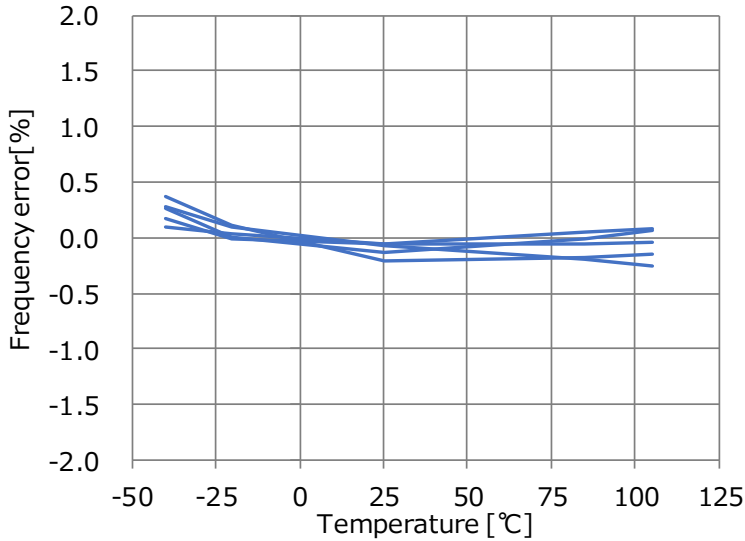


9. High-Speed On-Chip Oscillator (HOCO)

9.1 Temperature drift

AVCC0=5V

(n=5, Normalized at 32MHz)



10. Interference

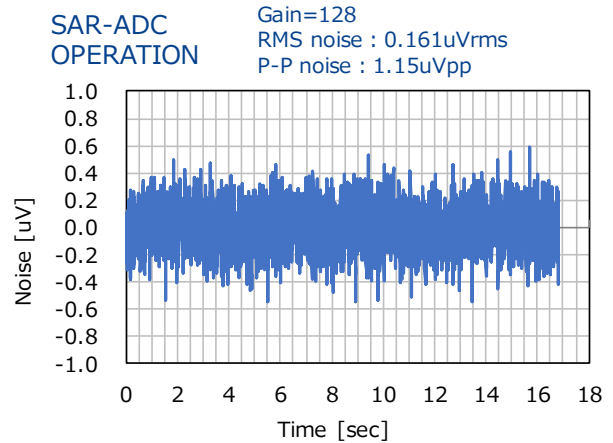
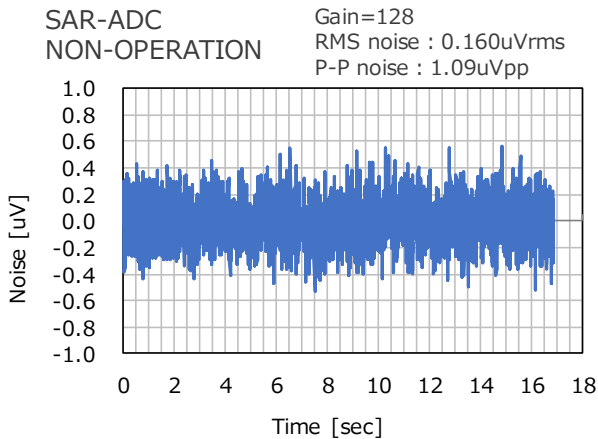
10.1 From 12bit SAR-ADC

AVCC=5V, Ta=25°C, External CLK=8MHz

Normal mode, Data rate=244sps, External VREF=2.5V, AIN=0V

12bit SAR-ADC : Input=AVCC, Sampling time=7.5us, Discharge ON

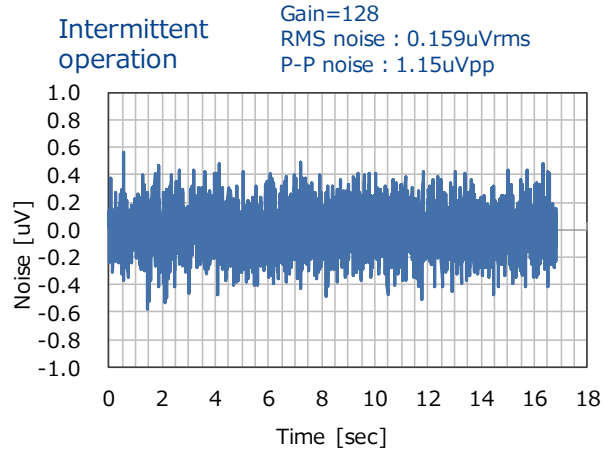
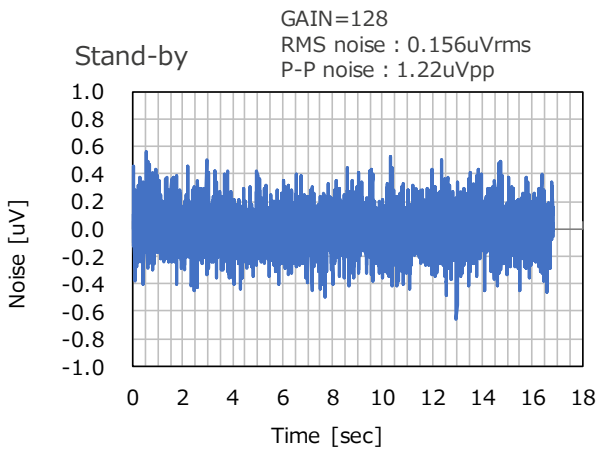
Condition	Peak-to-peak noise[uVpp] (RMS noise[uVrms])			
	Gain=1 (DSAD)	Gain=1 (PGA)	Gain=16	Gain=128
SAR-ADC NON-OPERATION	12.5 (1.90)	19.7 (3.01)	3.50 (0.508)	1.09 (0.160)
SAR-ADC OPERATION	13.7 (1.92)	21.5 (3.01)	3.32 (0.509)	1.15 (0.161)



10.2 From MCU

AVCC=5V, Ta=25°C, External CLK=8MHz
 Normal mode, Date rate=244sps, External VREF=2.5V, AIN=0V

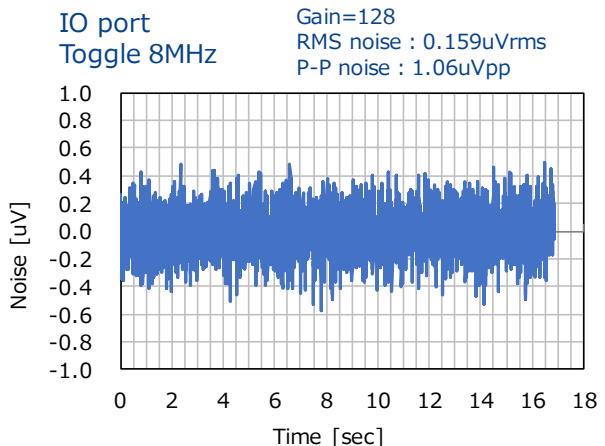
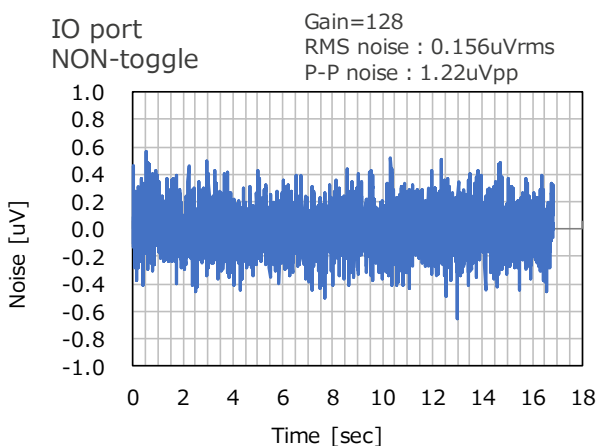
Condition	Peak-to-peak noise[uVpp] (RMS noise[uVrms])			
	Gain=1 (DSAD)	Gain=1 (PGA)	Gain=16	Gain=128
Stand-by	13.1 (1.92)	18.8 (2.91)	3.69 (0.514)	1.22 (0.156)
Continuous operation (IIR filter)	13.4 (1.99)	19.1 (2.91)	3.58 (0.513)	1.07 (0.159)
Intermittent operation (Multiplication<->Stand-by)	13.7 (1.99)	19.7 (2.89)	3.50 (0.499)	1.15 (0.159)



10.3 From IO port

VCC=AVCC=5V, Ta=25°C, External CLK=8MHz
 Normal mode, Date rate=244sps, External VREF=2.5V, AIN=0V
 IO port : PC14~17(Four terminals), Toggle frequency=8MHz, Cloud=30pF

Condition	Peak-to-peak noise[uVpp] (RMS noise[uVrms])			
	Gain=1 (DSAD)	Gain=1 (PGA)	Gain=16	Gain=128
IO port NON-toggle	13.1 (1.92)	18.8 (2.91)	3.69 (0.514)	1.22 (0.156)
IO port Toggle 8MHz	13.4 (1.99)	19.1 (2.91)	3.58 (0.513)	1.07 (0.159)



Revision history

Rev.	Date	Description	
		Page	Summary
1.00	Mar. 03, 2020	-	First release
2.00	Nov. 10, 2021	4	1. RX23E-A Analog Front End Features Voltage reference output voltage, temperature drift, changed
		26	3.1 Initial accuracy, Temperature drift, changed

General Precautions in the Handling of Microprocessing Unit and Microcontroller Unit Products

The following usage notes are applicable to all Microprocessing unit and Microcontroller unit products from Renesas. For detailed usage notes on the products covered by this document, refer to the relevant sections of the document as well as any technical updates that have been issued for the products.

1. Precaution against Electrostatic Discharge (ESD)

A strong electrical field, when exposed to a CMOS device, can cause destruction of the gate oxide and ultimately degrade the device operation. Steps must be taken to stop the generation of static electricity as much as possible, and quickly dissipate it when it occurs. Environmental control must be adequate. When it is dry, a humidifier should be used. This is recommended to avoid using insulators that can easily build up static electricity.

Semiconductor devices must be stored and transported in an anti-static container, static shielding bag or conductive material. All test and measurement tools including work benches and floors must be grounded. The operator must also be grounded using a wrist strap. Semiconductor devices must not be touched with bare hands. Similar precautions must be taken for printed circuit boards with mounted semiconductor devices.

2. Processing at power-on

The state of the product is undefined at the time when power is supplied. The states of internal circuits in the LSI are indeterminate and the states of register settings and pins are undefined at the time when power is supplied. In a finished product where the reset signal is applied to the external reset pin, the states of pins are not guaranteed from the time when power is supplied until the reset process is completed. In a similar way, the states of pins in a product that is reset by an on-chip power-on reset function are not guaranteed from the time when power is supplied until the power reaches the level at which resetting is specified.

3. Input of signal during power-off state

Do not input signals or an I/O pull-up power supply while the device is powered off. The current injection that results from input of such a signal or I/O pull-up power supply may cause malfunction and the abnormal current that passes in the device at this time may cause degradation of internal elements. Follow the guideline for input signal during power-off state as described in your product documentation.

4. Handling of unused pins

Handle unused pins in accordance with the directions given under handling of unused pins in the manual. The input pins of CMOS products are generally in the high-impedance state. In operation with an unused pin in the open-circuit state, extra electromagnetic noise is induced in the vicinity of the LSI, an associated shoot-through current flows internally, and malfunctions occur due to the false recognition of the pin state as an input signal become possible.

5. Clock signals

After applying a reset, only release the reset line after the operating clock signal becomes stable. When switching the clock signal during program execution, wait until the target clock signal is stabilized. When the clock signal is generated with an external resonator or from an external oscillator during a reset, ensure that the reset line is only released after full stabilization of the clock signal. Additionally, when switching to a clock signal produced with an external resonator or by an external oscillator while program execution is in progress, wait until the target clock signal is stable.

6. Voltage application waveform at input pin

Waveform distortion due to input noise or a reflected wave may cause malfunction. If the input of the CMOS device stays in the area between V_{IL} (Max.) and V_{IH} (Min.) due to noise, for example, the device may malfunction. Take care to prevent chattering noise from entering the device when the input level is fixed, and also in the transition period when the input level passes through the area between V_{IL} (Max.) and V_{IH} (Min.).

7. Prohibition of access to reserved addresses

Access to reserved addresses is prohibited. The reserved addresses are provided for possible future expansion of functions. Do not access these addresses as the correct operation of the LSI is not guaranteed.

8. Differences between products

Before changing from one product to another, for example to a product with a different part number, confirm that the change will not lead to problems. The characteristics of a microprocessing unit or microcontroller unit products in the same group but having a different part number might differ in terms of internal memory capacity, layout pattern, and other factors, which can affect the ranges of electrical characteristics, such as characteristic values, operating margins, immunity to noise, and amount of radiated noise. When changing to a product with a different part number, implement a system-evaluation test for the given product.

Notice

1. Descriptions of circuits, software and other related information in this document are provided only to illustrate the operation of semiconductor products and application examples. You are fully responsible for the incorporation or any other use of the circuits, software, and information in the design of your product or system. Renesas Electronics disclaims any and all liability for any losses and damages incurred by you or third parties arising from the use of these circuits, software, or information.
2. Renesas Electronics hereby expressly disclaims any warranties against and liability for infringement or any other claims involving patents, copyrights, or other intellectual property rights of third parties, by or arising from the use of Renesas Electronics products or technical information described in this document, including but not limited to, the product data, drawings, charts, programs, algorithms, and application examples.
3. No license, express, implied or otherwise, is granted hereby under any patents, copyrights or other intellectual property rights of Renesas Electronics or others.
4. You shall not alter, modify, copy, or reverse engineer any Renesas Electronics product, whether in whole or in part. Renesas Electronics disclaims any and all liability for any losses or damages incurred by you or third parties arising from such alteration, modification, copying or reverse engineering.
5. Renesas Electronics products are classified according to the following two quality grades: "Standard" and "High Quality". The intended applications for each Renesas Electronics product depends on the product's quality grade, as indicated below.
"Standard": Computers; office equipment; communications equipment; test and measurement equipment; audio and visual equipment; home electronic appliances; machine tools; personal electronic equipment; industrial robots; etc.
"High Quality": Transportation equipment (automobiles, trains, ships, etc.); traffic control (traffic lights); large-scale communication equipment; key financial terminal systems; safety control equipment; etc.
Unless expressly designated as a high reliability product or a product for harsh environments in a Renesas Electronics data sheet or other Renesas Electronics document, Renesas Electronics products are not intended or authorized for use in products or systems that may pose a direct threat to human life or bodily injury (artificial life support devices or systems; surgical implantations; etc.), or may cause serious property damage (space system; undersea repeaters; nuclear power control systems; aircraft control systems; key plant systems; military equipment; etc.). Renesas Electronics disclaims any and all liability for any damages or losses incurred by you or any third parties arising from the use of any Renesas Electronics product that is inconsistent with any Renesas Electronics data sheet, user's manual or other Renesas Electronics document.
6. When using Renesas Electronics products, refer to the latest product information (data sheets, user's manuals, application notes, "General Notes for Handling and Using Semiconductor Devices" in the reliability handbook, etc.), and ensure that usage conditions are within the ranges specified by Renesas Electronics with respect to maximum ratings, operating power supply voltage range, heat dissipation characteristics, installation, etc. Renesas Electronics disclaims any and all liability for any malfunctions, failure or accident arising out of the use of Renesas Electronics products outside of such specified ranges.
7. Although Renesas Electronics endeavors to improve the quality and reliability of Renesas Electronics products, semiconductor products have specific characteristics, such as the occurrence of failure at a certain rate and malfunctions under certain use conditions. Unless designated as a high reliability product or a product for harsh environments in a Renesas Electronics data sheet or other Renesas Electronics document, Renesas Electronics products are not subject to radiation resistance design. You are responsible for implementing safety measures to guard against the possibility of bodily injury, injury or damage caused by fire, and/or danger to the public in the event of a failure or malfunction of Renesas Electronics products, such as safety design for hardware and software, including but not limited to redundancy, fire control and malfunction prevention, appropriate treatment for aging degradation or any other appropriate measures. Because the evaluation of microcomputer software alone is very difficult and impractical, you are responsible for evaluating the safety of the final products or systems manufactured by you.
8. Please contact a Renesas Electronics sales office for details as to environmental matters such as the environmental compatibility of each Renesas Electronics product. You are responsible for carefully and sufficiently investigating applicable laws and regulations that regulate the inclusion or use of controlled substances, including without limitation, the EU RoHS Directive, and using Renesas Electronics products in compliance with all these applicable laws and regulations. Renesas Electronics disclaims any and all liability for damages or losses occurring as a result of your noncompliance with applicable laws and regulations.
9. Renesas Electronics products and technologies shall not be used for or incorporated into any products or systems whose manufacture, use, or sale is prohibited under any applicable domestic or foreign laws or regulations. You shall comply with any applicable export control laws and regulations promulgated and administered by the governments of any countries asserting jurisdiction over the parties or transactions.
10. It is the responsibility of the buyer or distributor of Renesas Electronics products, or any other party who distributes, disposes of, or otherwise sells or transfers the product to a third party, to notify such third party in advance of the contents and conditions set forth in this document.
11. This document shall not be reprinted, reproduced or duplicated in any form, in whole or in part, without prior written consent of Renesas Electronics.
12. Please contact a Renesas Electronics sales office if you have any questions regarding the information contained in this document or Renesas Electronics products.

(Note1) "Renesas Electronics" as used in this document means Renesas Electronics Corporation and also includes its directly or indirectly controlled subsidiaries.

(Note2) "Renesas Electronics product(s)" means any product developed or manufactured by or for Renesas Electronics.

(Rev.4.0-1 November 2017)

Corporate Headquarters

TOYOSU FORESIA, 3-2-24 Toyosu,
Koto-ku, Tokyo 135-0061, Japan
www.renesas.com

Trademarks

Renesas and the Renesas logo are trademarks of Renesas Electronics Corporation. All trademarks and registered trademarks are the property of their respective owners.

Contact information

For further information on a product, technology, the most up-to-date version of a document, or your nearest sales office, please visit:
www.renesas.com/contact/.