

RX Family

R01AN3345EJ0100

Rev.1.00

RX Driver Package Ver.1.10

July 15, 2016

Introduction

This document is the RX Family RX Driver Package User's Manual, version 1.10.

This User's Manual describes basic structures, features and usage of RX Driver Package applications, and about the sample application program using the FIT modules included in this package.

Target Device

RX110 Group (Renesas Starter Kit for RX110)

RX111 Group (Renesas Starter Kit for RX111)

RX113 Group (Renesas Starter Kit for RX113)

RX130 Group (Renesas Starter Kit for RX130)

RX210 Group (Renesas Starter Kit for RX210)

RX230 Group (Renesas Starter Kit for RX230)

RX231 Group (Renesas Starter Kit for RX231)

RX23T Group (Renesas Starter Kit for RX23T)

RX24T Group (Renesas Starter Kit for RX24T)

RX24T Group (Renesas Starter Kit for RX24T)

RX63N Group (Renesas Starter Kit for RX63N)

RX64M Group (Renesas Starter Kit+ for RX64M)

RX71M Group (Renesas Starter Kit+ for RX71M)

When using this application note with your product, careful evaluation is recommended.

And when using this application note with other Renesas MCUs, careful evaluation is recommended after making modifications to comply with the alternate MCU.

Related Documents

- RX Family Board Support Package Module Using Firmware Integration Technology (R01AN1685EU)
- Firmware Integration Technology User's Manual (R01AN1833EU)
- RX Family Adding Firmware Integration Technology Modules to Projects (R01AN1723EU)
- RX Family Adding Firmware Integration Technology Modules to CS+ Projects (R01AN1826EJ)
- The User's Manual provided with the RX Driver Package Application.

Contents

1. Overview	3
1.1 Applicability	3
1.2 Operating Environment	3
2. About RX Driver Package	6
2.1 System Structure	6
2.2 RX Driver Package Features	7
3. Structure of the RX Family RX Driver Package	8
3.1 Folder Structure	8
3.2 Module Structure	9
3.3 FIT Modules	10
4. Usage Procedures	13
4.1 Environment Used	13
4.2 Install RX Driver Package in e ² studio	13
4.3 Application Creation	14
4.3.1 Create a Workspace and a Project	14
4.3.2 Install the FIT Modules with the FIT Plugin	20
4.3.3 Create an LED Driving Program	23
4.3.4 Build and Try Running the Program	24
4.3.5 For location of the API information of each FIT module	27
5. RX Driver Package Application	28
5.1 RX Driver Package Application Structure	28
6. Supplement	29
6.1 Commercial Version of Middleware and Drivers Supporting FIT	29
6.2 Differences from previous RDP for RX600/RX700 Series	30
6.3 Differences from previous RDP for RX100/RX200 Series	33
Website and Support	36
Revision History	1
General Precautions in the Handling of MPU/MCU Products	2

1. Overview

1.1 Applicability

This User's Manual applies to the RX Family RX Driver Package, version 1.10.

1.2 Operating Environment

This package runs under the operating environment described below.

Table 1-1 Operating Environment (RX110)

Microcontroller	RX110 Group
Evaluation board	Renesas Starter Kit for RX110
Integrated development environment (IDE)	e ² studio, V4.0.2 or later
Cross tools	RX Family C/C++ Compiler Package V2.03.00 or later
Emulator	E1, E20

Table 1-2 Operating Environment (RX111)

Microcontroller	RX111 Group
Evaluation board	Renesas Starter Kit for RX111
Integrated development environment (IDE)	e ² studio, V4.0.2 or later
Cross tools	RX Family C/C++ Compiler Package V2.03.00 or later
Emulator	E1, E20

Table 1-3 Operating Environment (RX113)

Microcontroller	RX113 Group
Evaluation board	Renesas Starter Kit for RX113
Integrated development environment (IDE)	e ² studio, V4.0.2 or later
Cross tools	RX Family C/C++ Compiler Package V2.03.00 or later
Emulator	E1, E20

Table 1-4 Operating Environment (RX130)

Microcontroller	RX130 Group
Evaluation board	Renesas Starter Kit for RX130
Integrated development environment (IDE)	e ² studio, V4.0.2 or later
Cross tools	RX Family C/C++ Compiler Package V2.03.00 or later
Emulator	E1, E20

Table 1-5 Operating Environment (RX230)

Microcontroller	RX230 Group
Evaluation board	Renesas Starter Kit for RX230
Integrated development environment (IDE)	e ² studio, V4.0.2 or later
Cross tools	RX Family C/C++ Compiler Package V2.03.00 or later
Emulator	E1, E20

Table 1-6 Operating Environment (RX230)

Microcontroller	RX230 Group
Evaluation board	Renesas Starter Kit for RX230
Integrated development environment (IDE)	e ² studio, V4.0.2 or later
Cross tools	RX Family C/C++ Compiler Package V2.03.00 or later
Emulator	E1, E20

Table 1-7 Operating Environment (RX231)

Microcontroller	RX231 Group
Evaluation board	Renesas Starter Kit for RX231
Integrated development environment (IDE)	e ² studio, V4.0.2 or later
Cross tools	RX Family C/C++ Compiler Package V2.03.00 or later
Emulator	E1, E20

Table 1-8 Operating Environment (RX23T)

Microcontroller	RX23T Group
Evaluation board	Renesas Starter Kit for RX23T
Integrated development environment (IDE)	e ² studio, V4.0.2 or later
Cross tools	RX Family C/C++ Compiler Package V2.03.00 or later
Emulator	E1, E20

Table 1-9 Operating Environment (RX24T)

Microcontroller	RX24T Group
Evaluation board	Renesas Starter Kit for RX24T
Integrated development environment (IDE)	e ² studio, V4.0.2 or later
Cross tools	RX Family C/C++ Compiler Package V2.03.00 or later
Emulator	E1, E20

Table 1-10 Operating Environment (RX63N)

Microcontroller	RX63N Group
Evaluation board	Renesas Starter Kit for RX63N
Integrated development environment (IDE)	e ² studio, V4.0.2 or later
Cross tools	RX Family C/C++ Compiler Package V2.03.00 or later
Emulator	E1, E20

Table 1-11 Operating Environment (RX64M)

Microcontroller	RX64M Group
Evaluation board	Renesas Starter Kit+ for RX64M
Integrated development environment (IDE)	e ² studio, V4.0.2 or later
Cross tools	RX Family C/C++ Compiler Package V2.03.00 or later
Emulator	E1, E20

Table 1-12 Operating Environment (RX71M)

Microcontroller	RX71M Group
Evaluation board	Renesas Starter Kit+ for RX71M
Integrated development environment (IDE)	e ² studio, V4.0.2 or later
Cross tools	RX Family C/C++ Compiler Package V2.03.00 or later
Emulator	E1, E20

2. About RX Driver Package

The RX Driver Package is a software platform (framework) that combines the following modules to be required for development in a single package. Since the package contains multiple modules, you can start developing immediately without having to obtain each module separately.

- Board Support Package (BSP) module
- FIT peripheral function modules (free version)
- FIT middleware modules (free version)
- FIT interface modules

You can develop the user application layer with ease by using the Sample Application Program (RX Driver Package Application) which utilizes the RX Driver Package.

2.1 System Structure

The figure below shows the system structure of the RX Driver Package.

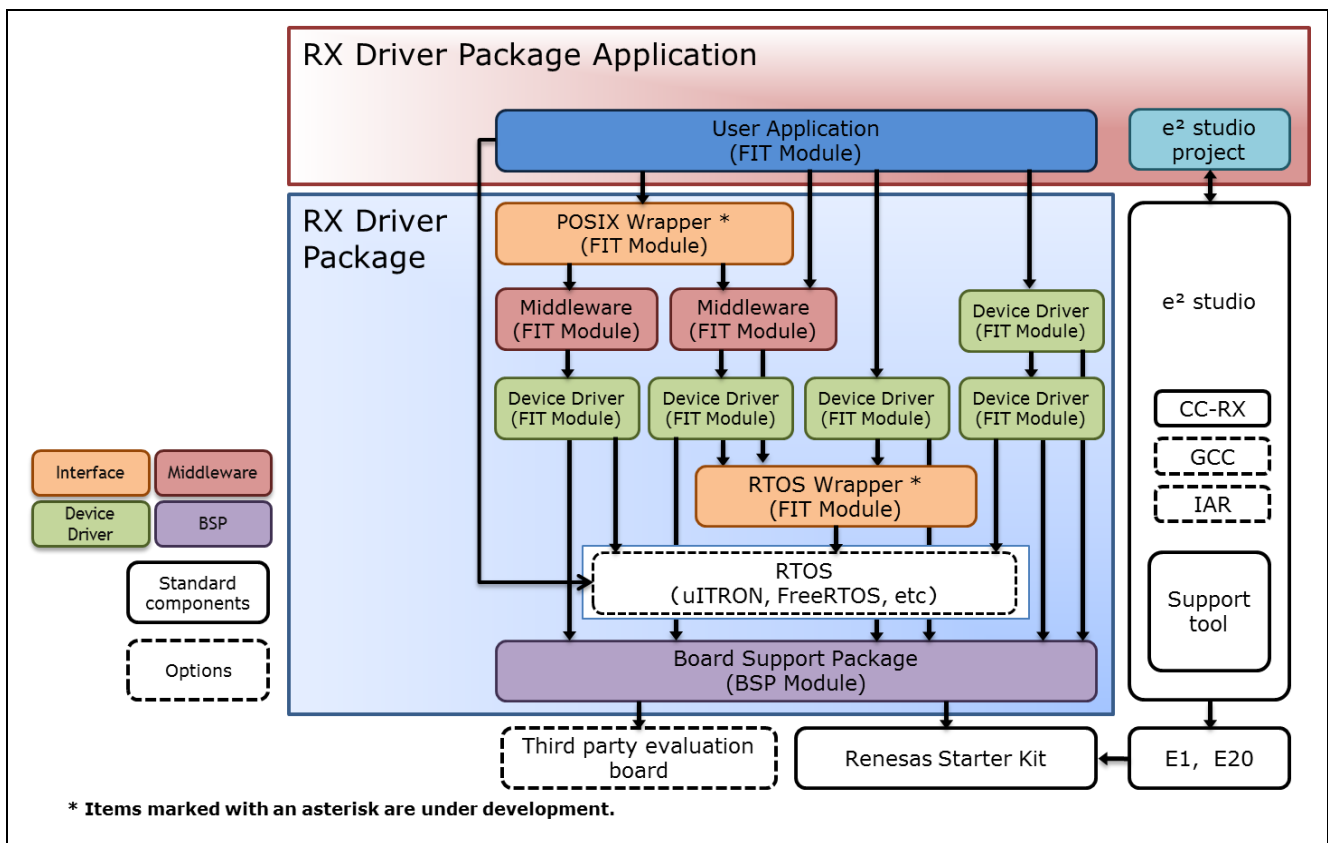


Figure 2-1 System Structure

2.2 RX Driver Package Features

The RX Driver Package has the following features.

(a) Select necessary modules and start developing immediately the application program

You can easily build a system simply by selecting the modules you need from the package. After that, all you have to do is develop the application program.

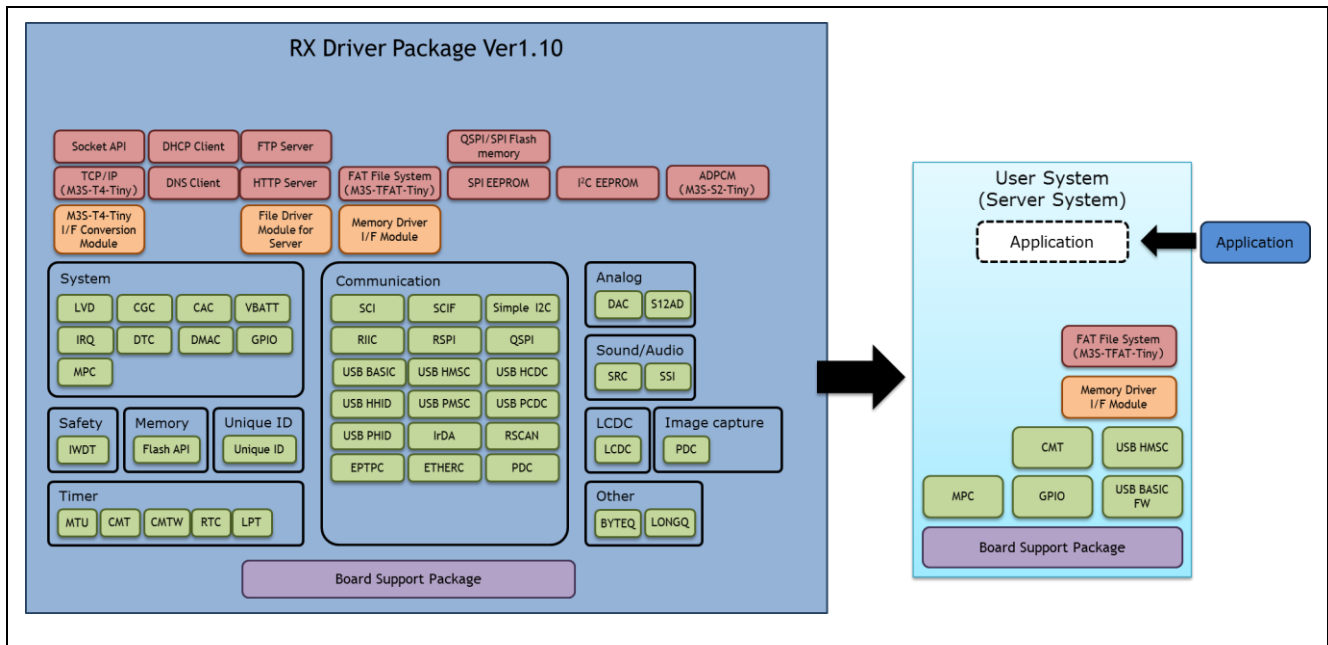


Figure 2-2 An example of system build

(b) Free to use

All the modules included in the RX Driver Package can be used free of charge. Free versions of middleware modules such as TCP/IP and file system are included.

(c) Can upgrade to paid versions of modules

The free versions of modules in the RX Driver Package can be replaced with commercial (paid) versions. By using a commercial (paid) version, all the functionality of the module will be available, as well as support about a commercial version.

(d) Check operation including user application

The RX Driver Package Application is provided as a sample user application that uses the RX Driver Package. The RX Driver Package Application consists of programs for operating each module in the RX Driver Package, and the project files for building the programs. It enables you to start checking the operation of your user application immediately.

3. Structure of the RX Family RX Driver Package

3.1 Folder Structure

The folder structure used in this package is shown below.

When the ZIP file for this package is downloaded from the Renesas web site and decompressed, a folder of the same name will be present and it will contain a **FITModules** folder, a **reference_documents** folder, and this document.

The **FITModules** folder contains the FIT modules for the modules shown in Table 3-1, Table 3-2, Table 3-3 (as ZIP files and XML files).

The **reference_documents** folder contains the documentation for using this package in various development

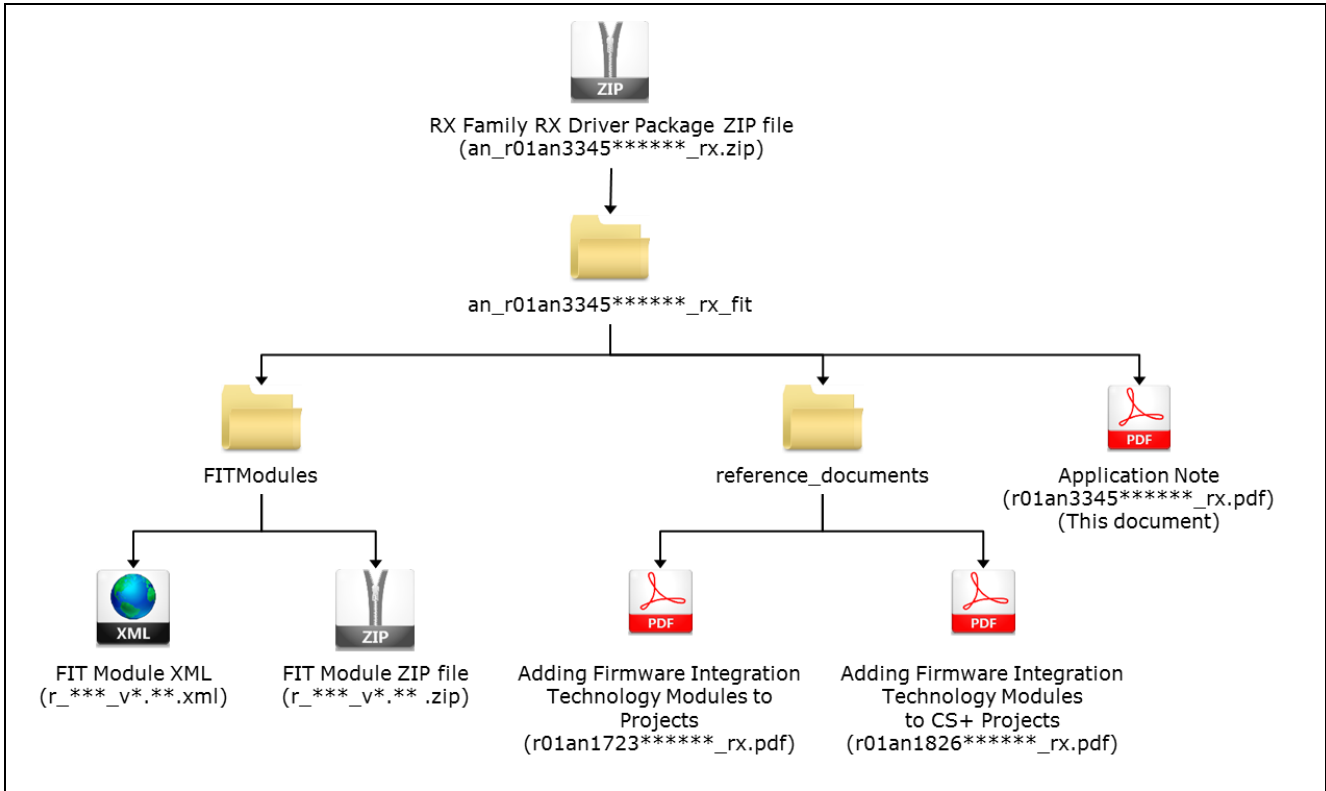


Figure 3-1 Folder Structure of the RX Family RX Driver Package

3.2 Module Structure

The figure below shows the types and structure of the FIT modules included in this package.

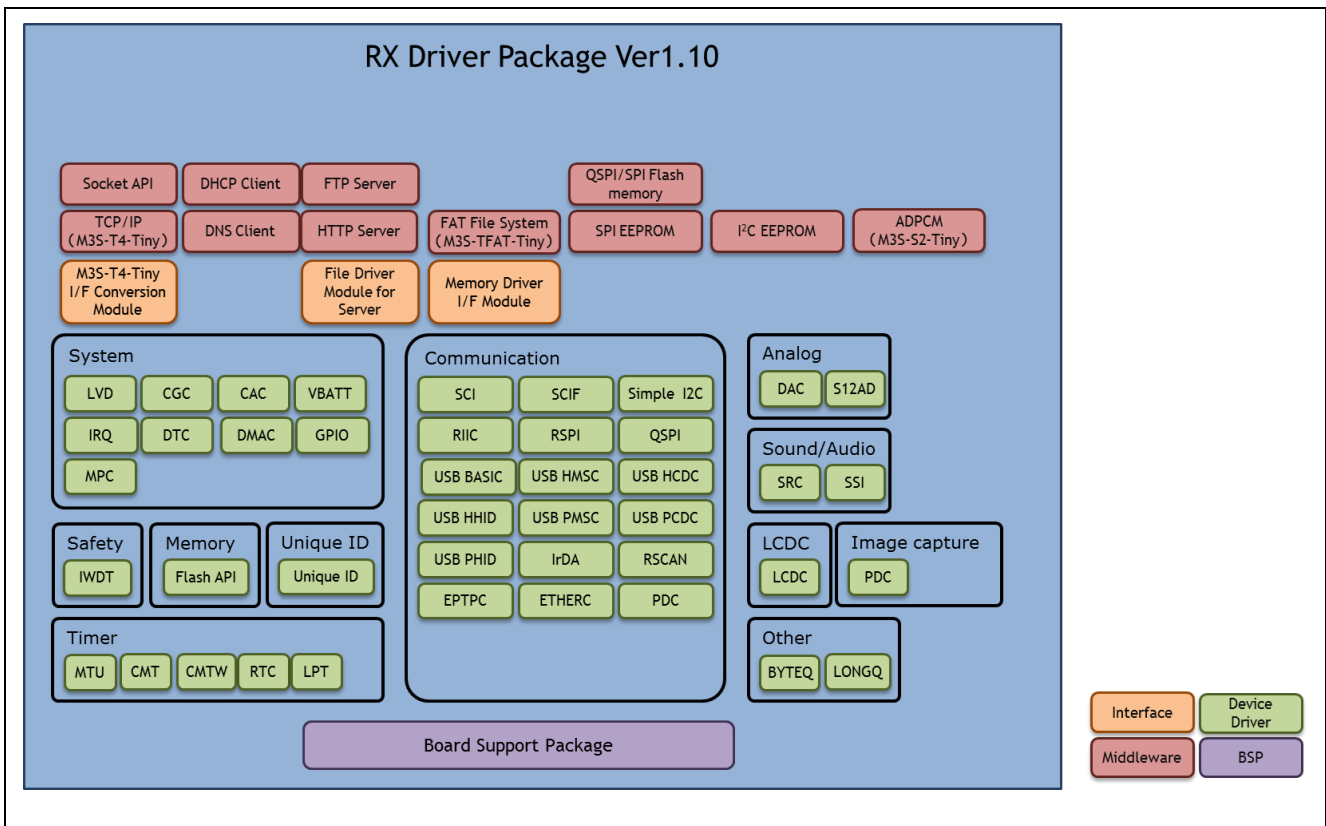


Figure 3-2 RX Family RX Driver Package FIT Module Structure

3.3 FIT Modules

The table below lists the FIT modules included in this package.

(1) Board Support Package (BSP)

Table 3-1 Board Support Package (BSP)

Module	FIT Module Name	Rev
Board Support Package (BSP)	r_bsp	3.31

(2) Device Driver

Table 3-2 Device Driver

Module	FIT Module Name	Rev
Voltage Detection Circuit (LVD)	r_lvd_rx	1.50
Clock Generation Circuit (CGC)	r_cgc_rx100	1.31
Clock Frequency Accuracy Measurement Circuit (CAC)	r_cac_rx	1.10
Battery Backup (VBATT)	r_vbatt_rx	1.01
Interrupt Controller (IRQ)	r_irq_rx	1.90
Data Transfer Controller (DTC)	r_dtc_rx	2.04
DMA Controller (DMAC)	r_dmaca_rx	1.03
I/O Ports (GPIO)	r_gpio_rx	2.00
Multi-Function Pin Controller (MPC)	r_mpc_rx	2.00
Multi-pulse Timer Unit (MTU2a)	r_mtu_rx	1.20
Compare Match Timer (CMT)	r_cmt_rx	2.90
Compare Match Timer W (CMTW)	r_cmtw_rx	1.10
Real-Time Clock (RTC)	r_rtc_rx	2.41
Low Power Timer (LPT)	r_lpt_rx	1.00
Independent Watchdog Timer (IWDT)	r_iwdt_rx	1.51
Serial Communications Interface (SCI: Asynchronous/Clock Synchronous)	r_sci_rx	1.70
Serial Communications Interface with FIFO (SCIF: Asynchronous/Clock Synchronous)	r_scif_rx	1.10
Serial Communications Interface with FIFO (SCIF: Device Driver for Serial Memory Control)	r_scifa_smstr_rx	1.08
Serial Communications Interface (SCI: Simple I ² C Bus)	r_sci_iic_rx	1.90
Serial Peripheral Interface (RSPI: Device Driver for Serial Memory Control)	r_rspi_smstr_rx	1.11
Quad Serial Peripheral Interface (QSPI: Device Driver for Serial Memory Control)	r_qspi_smstr_rx	1.08
USB Basic Firmware	r_usb_basic	1.11
USB Host Mass Storage Class	r_usb_hmsc	1.11
USB Host Communication Device Class	r_usb_hcdc	1.11
USB Host Human Interface Device Class	r_usb_hhid	1.11
USB Peripheral Mass Storage Class	r_usb_pmhc	1.11
USB Peripheral Communications Device Class	r_usb_pcdc	1.11
USB Peripheral Human Interface Device Class	r_usb_phid	1.11
USB Basic Firmware mini	r_usb_basic_mini	1.02
USB Host Mass Storage Class mini	r_usb_hmsc_mini	1.02
USB Host Communication Device Class mini	r_usb_hcdc_mini	1.02

USB Host Human Interface Device Class mini	r_usb_hhid_mini	1.02
USB Peripheral Mass Storage Class mini	r_usb_pmssc_mini	1.02
USB Peripheral Communications Device Class mini	r_usb_pcdc_mini	1.02
USB Peripheral Human Interface Device Class mini	r_usb_phid_mini	1.02
IrDA Interface (IrDA)	r_irda_sci_rx	1.01
CAN Module (CAN)	r_can_rx	2.02
CAN Module (RSCAN)	r_rscan_rx	1.00
PTP Module for the Ethernet Controller (EPTPC)	r_ptp_rx	1.11
EPTPC Light Module	r_ptp_light_rx	1.10
Ethernet controller (ETHERC)	r_ether_rx	1.10
Parallel Data Capture Unit (PDC)	r_pdc_rx	1.03
12-Bit A/D Converter (S12AD)	r_s12ad_rx	2.11
D/A Converter (DAC)	r_dac_rx	2.80
Flash Memory (Flash API)	r_flash_rx	1.63
Sampling Rate Converter (SRC)	r_src_api_rx	1.11
Serial Sound Interface (SSI)	r_ssi_api_rx	1.20
LCD Controller/Driver (LCDC)	r_lcdc_rx	1.00
Unique ID Read	r_uid_rx	1.00
Byte Queue Buffer (Data Management)	r_byteq	1.60
Long Queue Buffer (Data Management)	r_longq	1.60

(3) Middleware/Interface Module

Table 3-3 Middleware/Interface Module

Module	FIT Module Name	Rev
TCP/IP M3S-T4-Tiny for Embedding	r_t4_rx	2.05
Interface conversion module for Ethernet Driver and Embedded system M3S-T4-Tiny	r_t4_driver_rx	1.04
Embedded TCP/IP M3S-T4-Tiny Socket API Module	r_socket_rx	1.30
DHCP client using the embedded TCP/IP M3S-T4-Tiny Module	r_t4_dhcp_client_rx	1.03
DNS client using the embedded TCP/IP M3S-T4-Tiny Module	r_t4_dns_client_rx	1.02
FTP server using the embedded TCP/IP M3S-T4-Tiny Module	r_t4_ftp_server_rx	1.03
Web server using the embedded TCP/IP M3S-T4-Tiny Module	r_t4_http_server_rx	1.04
File driver for FTP server and Web server Module	r_t4_file_driver_rx	1.01
Sound playback system and compression system (original ADPCM codec)	r_s2_rx	3.03
M3S-TFAT-Tiny (FAT file system)	r_tfat_rx	3.02
M3S-TFAT-Tiny Memory Driver Interface Module	r_tfat_driver_rx	1.02
Simple I2C Module for EEPROM Access	r_eeprom_sci_iic_rx	1.30
I2C Bus Interface (RIIC) Module for EEPROM Access	r_eeprom_riic_rx	1.40
SPI Serial EEPROM Module	r_eeprom_spi	2.33
SPI Serial Flash memory Module	r_flash_spi	2.33

Note: This package includes the M3S-T4-Tiny (TCP/IP protocol stack library) of evaluation version. For the commercial version, please go to the below URL.

<https://www.renesas.com/en-us/products/software-tools/software-os-middleware-driver/communication-software/m3s-t4-tiny.html>

<https://www.renesas.com/pt-br/products/software-tools/software-os-middleware-driver/communication-software/m3s-t4-tiny.html>

<https://www.renesas.com/en-eu/products/software-tools/software-os-middleware-driver/communication-software/m3s-t4-tiny.html>

<https://www.renesas.com/ja-jp/products/software-tools/software-os-middleware-driver/communication-software/m3s-t4-tiny.html>

<https://www.renesas.com/en-sg/products/software-tools/software-os-middleware-driver/communication-software/m3s-t4-tiny.html>

<https://www.renesas.com/en-in/products/software-tools/software-os-middleware-driver/communication-software/m3s-t4-tiny.html>

<https://www.renesas.com/ko-kr/products/software-tools/software-os-middleware-driver/communication-software/m3s-t4-tiny.html>

<https://www.renesas.com/zh-tw/products/software-tools/software-os-middleware-driver/communication-software/m3s-t4-tiny.html>

4. Usage Procedures

The RX Driver Package allows programs to be easily constructed by using the FIT plugin included in e² studio. The remainder of this section presents a simple usage example using e² studio. To use CS+, see the document “RX Family Adding Firmware Integration Technology Modules to CS+ Projects (R01AN1826EJ)” included in this package.

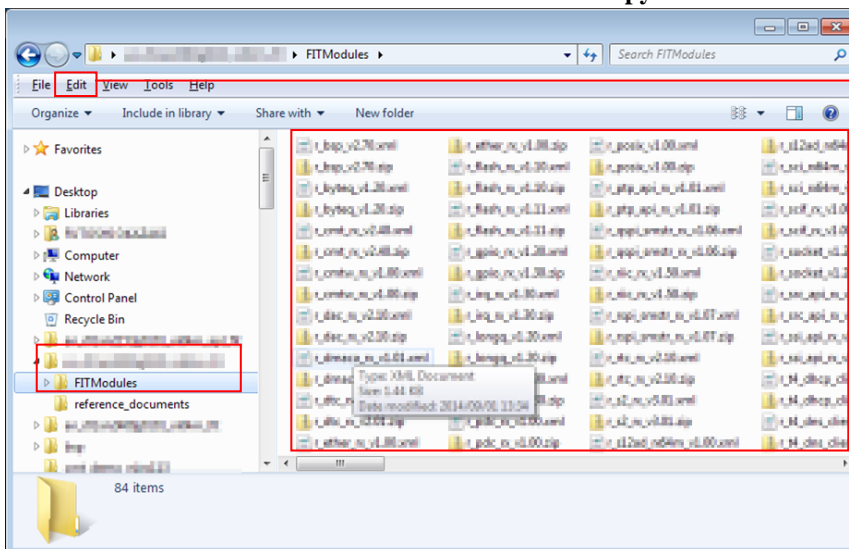
4.1 Environment Used

The RX231 is used as the target microcontroller and the Renesas Starter Kit RX231 is used as the target board. If a different environment is used, replace the specifics used in the example with the ones for that environment as you read.

4.2 Install RX Driver Package in e² studio

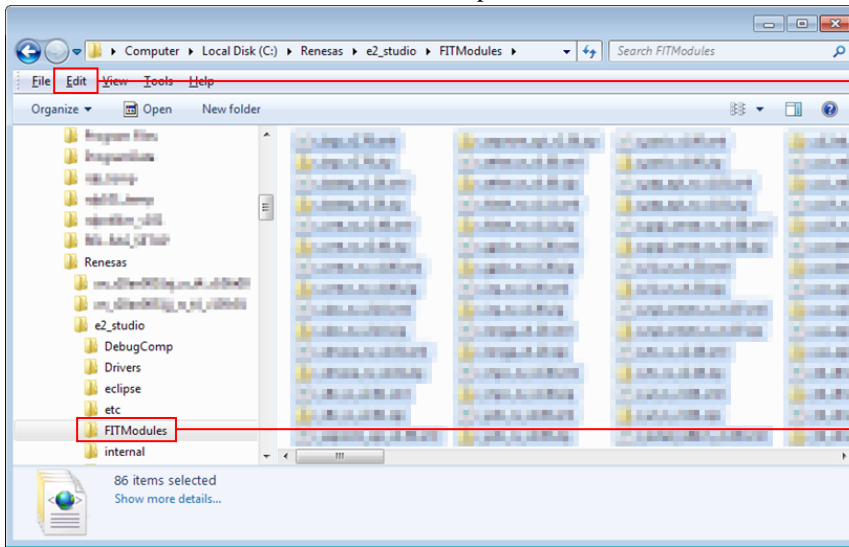
Install the FIT modules in the RX Driver Package into e² studio.

1. Decompress the downloaded file **an_r01an3345ej****_rx.zip** into an arbitrary directory.
2. Open the folder that was decompressed and open the **FITModules** folder in that folder.
3. Select all the files in the **FITModules** folder and click **Copy** in the **Edit** menu.



Select all files and click **Copy** in the **Edit** menu.

4. Open the e² studio install folder (Usually, this will be c:/Renesas/e2_studio.) and open the **FITModules** folder in that folder.
5. Click **Paste** on the **Edit** menu.
The e² studio **FITModules** folder will be copied to the FIT modules.



Open the **FITModules** folder and click **Paste** on the **Edit** menu. The folder will be copied.

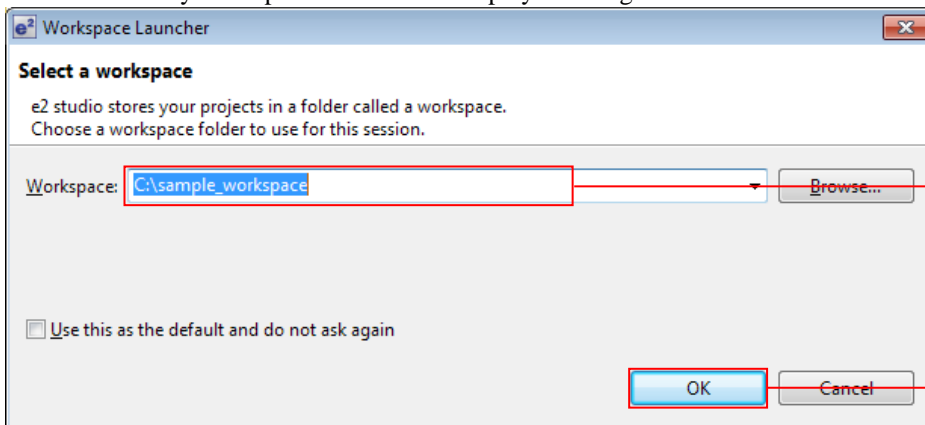
4.3 Application Creation

In this section, create a simple application that drives an LED.

4.3.1 Create a Workspace and a Project

First, create a new workspace and a new project.

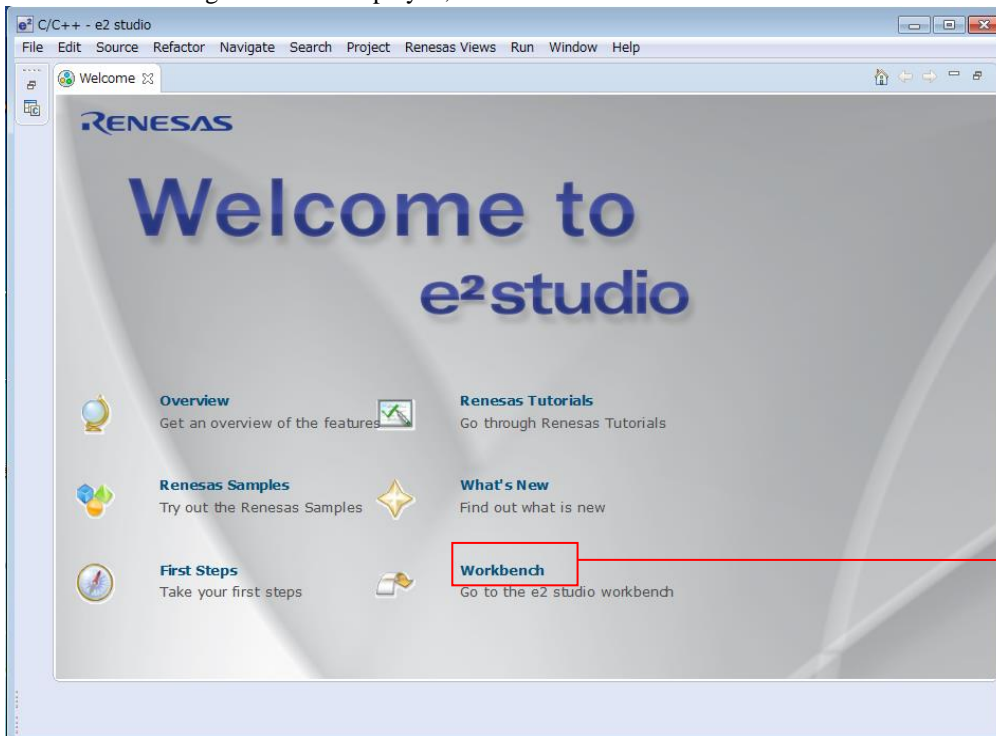
1. Start e² studio.
2. Enter an arbitrary workspace folder in the displayed dialog box and click **OK**.



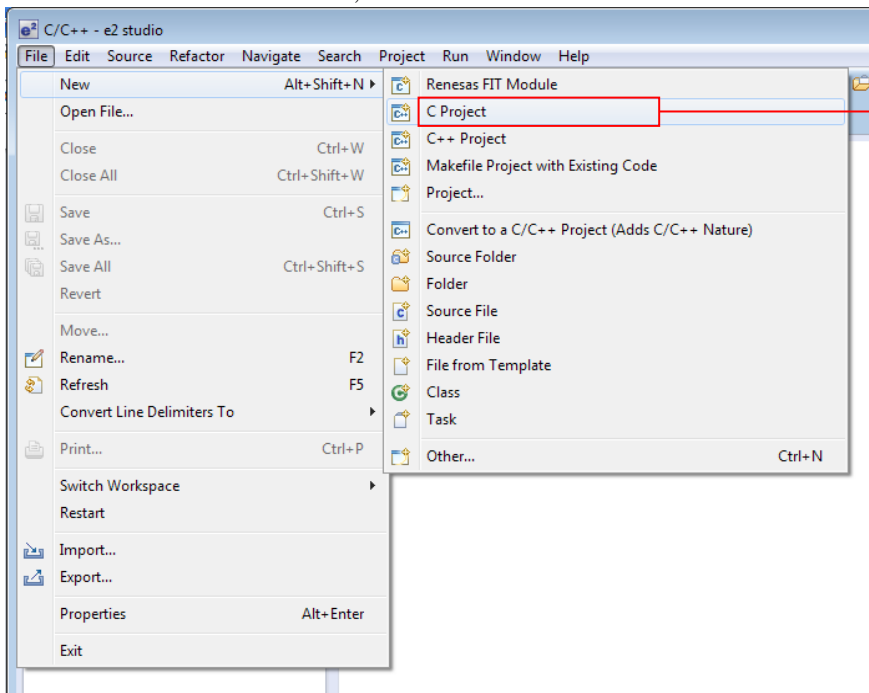
Enter a workspace folder.

Click **OK**.

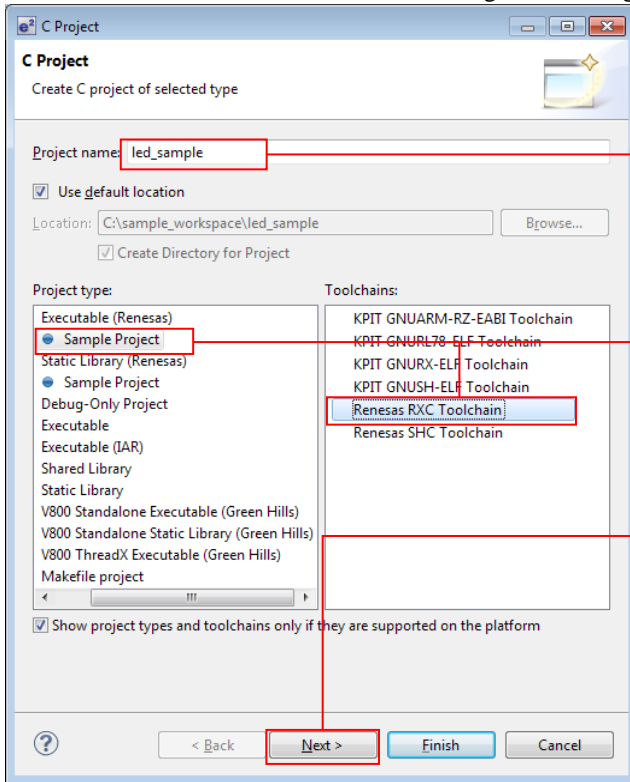
3. When the following window is displayed, click **Workbench**.



4. When the workbench has started, select **New** from the **File** menu and click **C Project**.



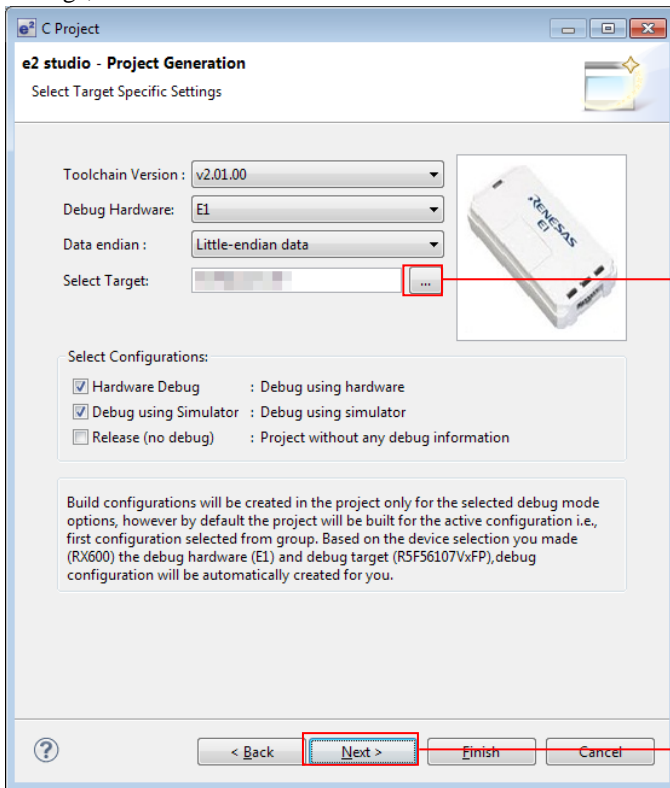
- 5. Enter the project name. For the project type, click **Sample Project** under **Executable (Renesas)**. For the tool chain, click **Renesas RXC Toolchain**. After making these settings, click **Next**.



Enter the project name.

Click here.

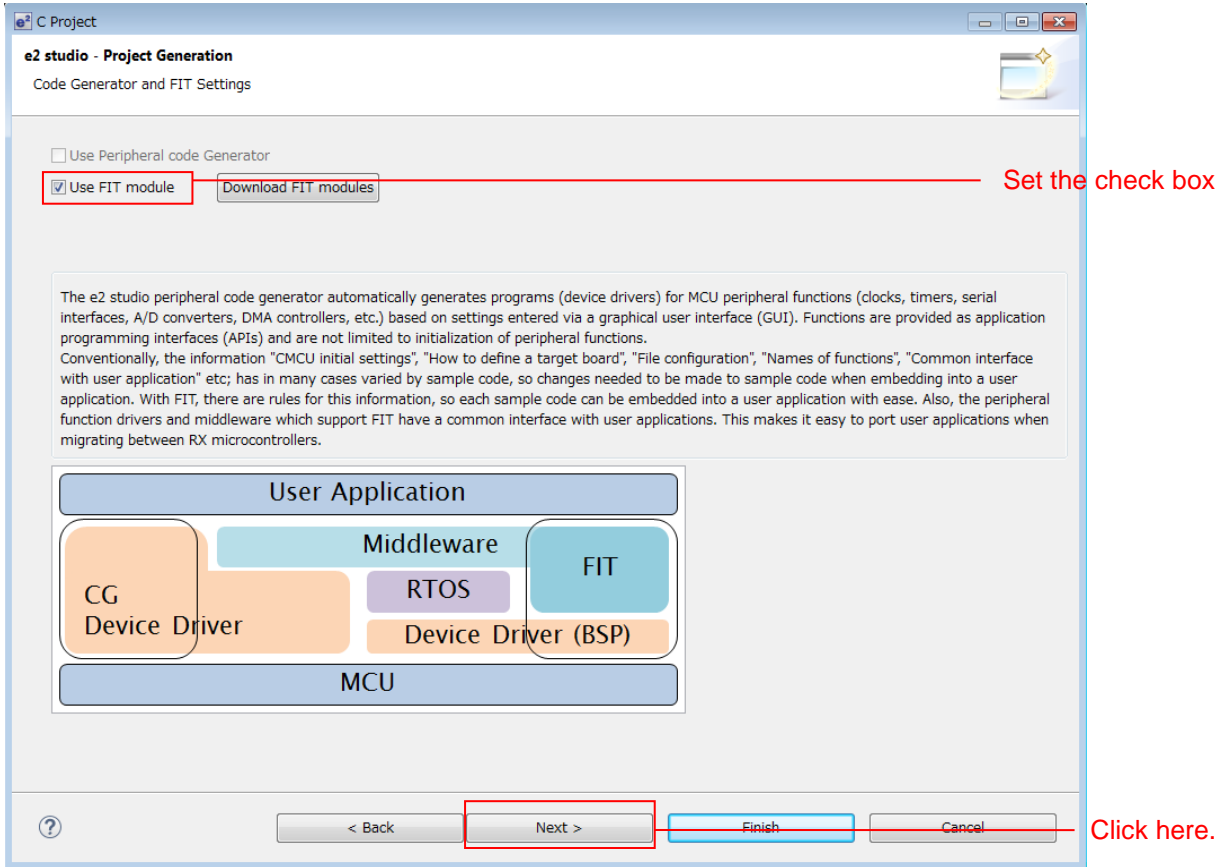
- 6. Select the target. Click the "... " button under **Target Selection** and select **R5F52318AxFP**. After making these settings, click **Next**.



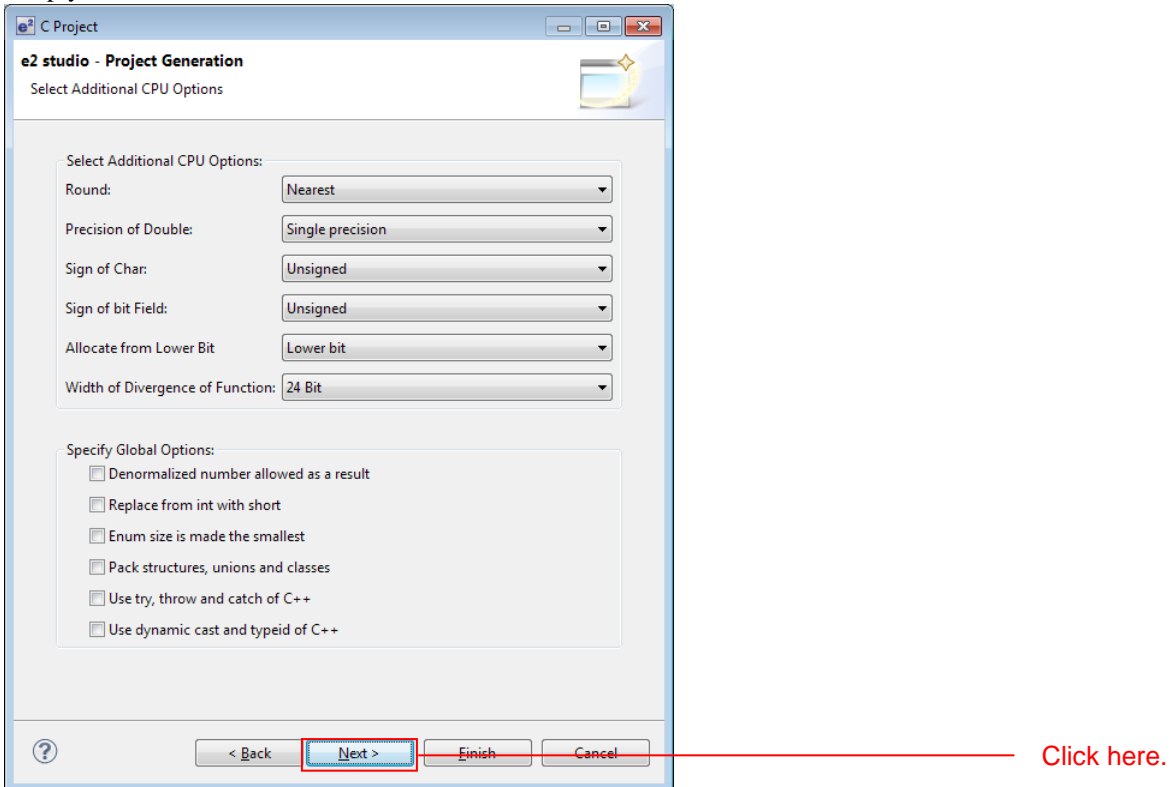
Click here and select **R5F52318AxFP**.

Click here.

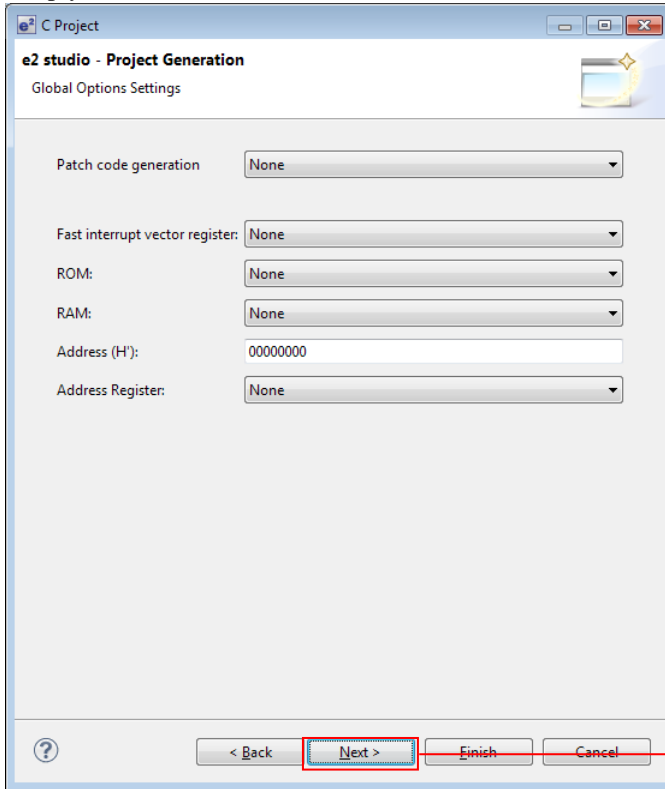
7. Set the check box of “Use FIT module” and click **Next** here.



8. Simply click **Next** here.

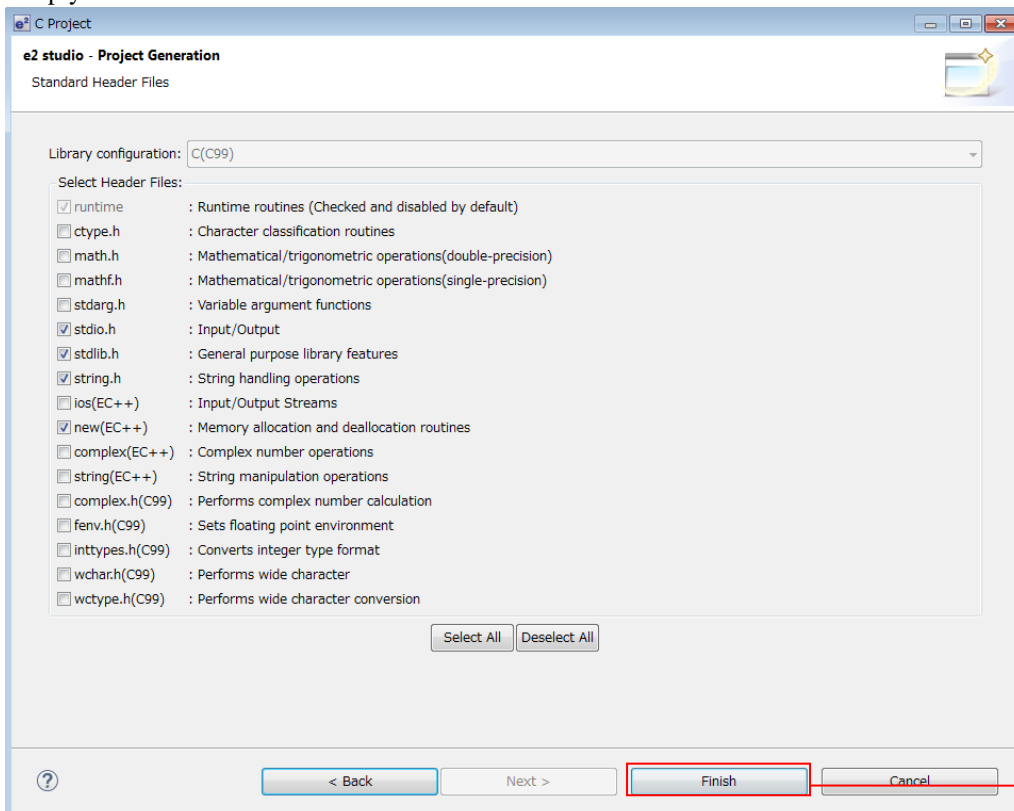


9. Simply click **Next** here.



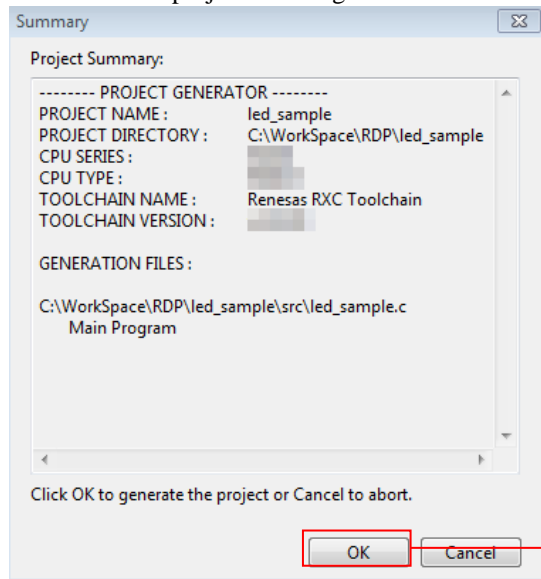
Click here.

10. Simply click **Finish** here.



Click here.

11. Click **OK**. The project will be generated.

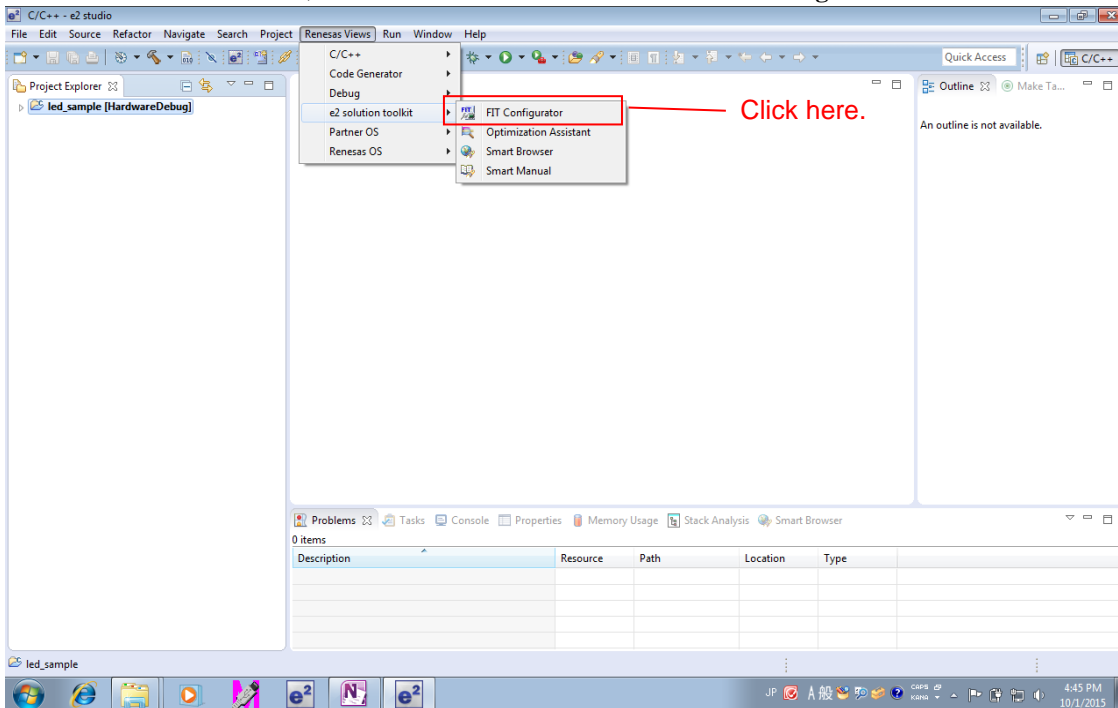


4.3.2 Install the FIT Modules with the FIT Plugin.

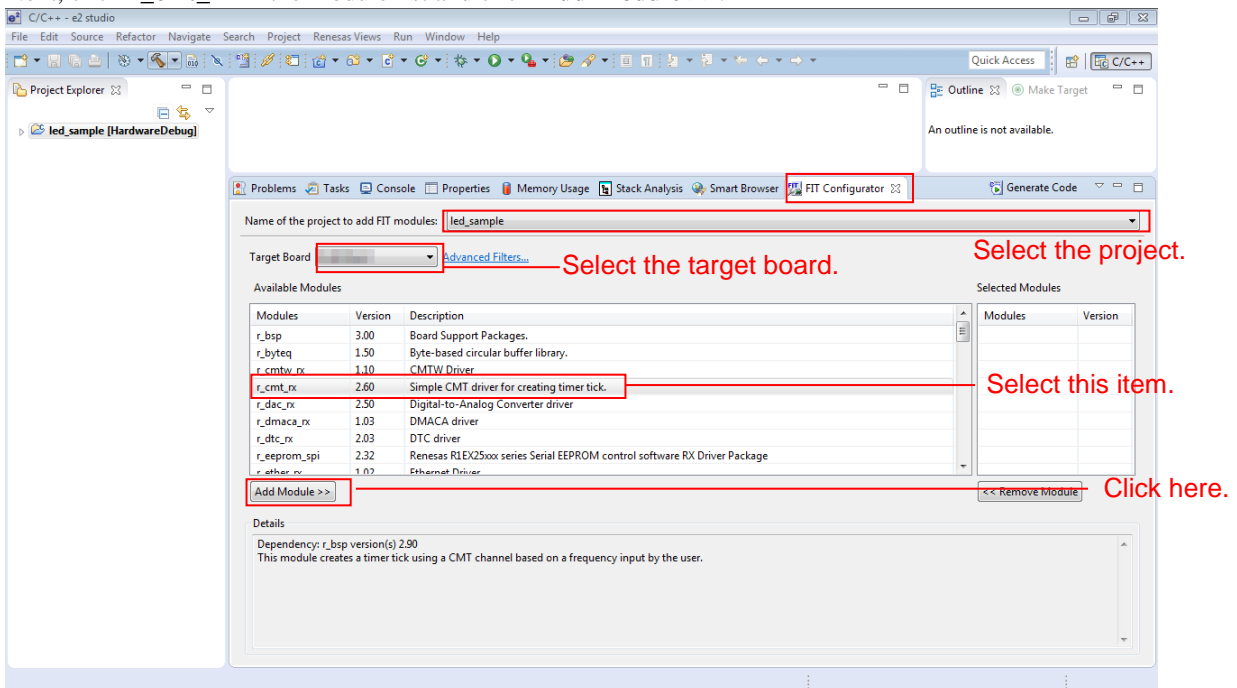
Install the required modules with the FIT plugin into the created project.

Here, install the BSP module (r_bsp) and the compare match timer driver (r_cmt_rx).

1. In the **Renesas Views** menu, select **e2 solution toolkit** and click **FIT Configurator**.



2. In the **FIT Configurator** tab,
 - Select the created project with **Project to Add FIT Module** to.
 - Next, select **RX231** under **Group** and select **RSKRX231** from **Target Board**.
 - Next, click **r_cmt_rx** in the module list and click **Add Module >>**.

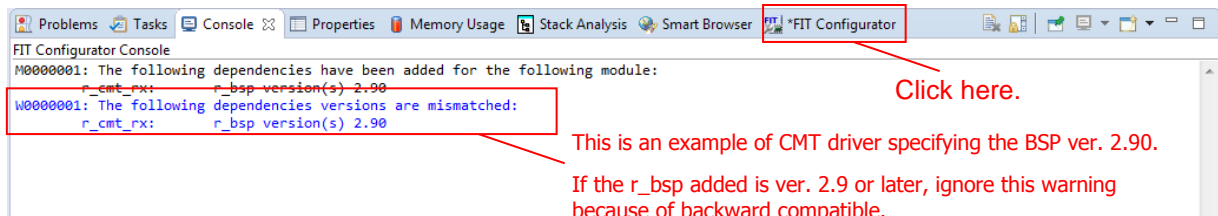



- In the **Console** tab,
The **r_bsp** having a dependency with **r_cmt_rx** is also added at a time. Note
Click **FIT Configurator** again.

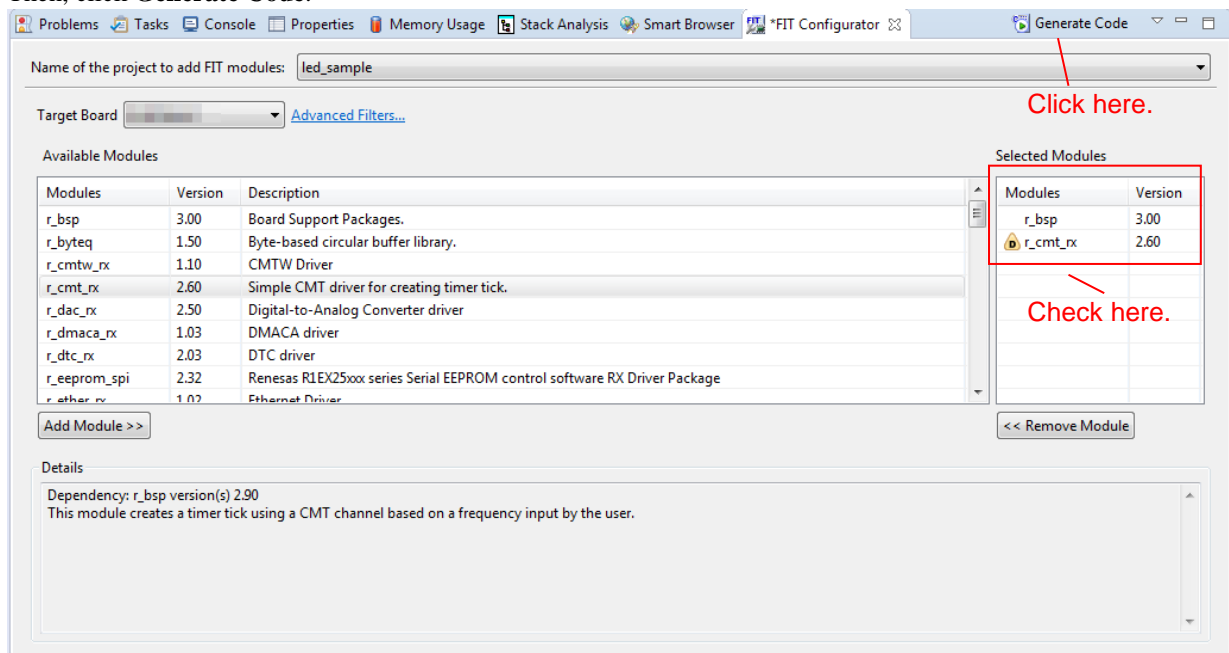
Note: Additional FIT driver specifies the adaptable "r_bsp" version.

If the "r_bsp" versions specified and added mismatch according to the time of FIT driver release,
Warning (W0000001) is output on the console screen.

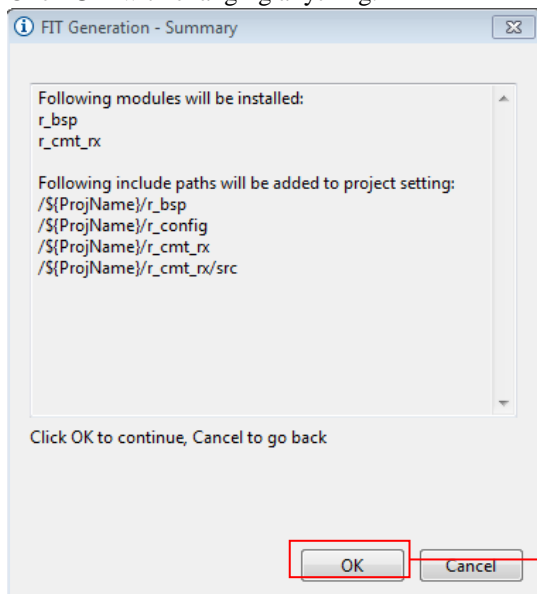
If the "r_bsp" version added is the one specified or later, Warning can be ignored, as the new "r_bsp" version is backward compatible.



- Check **r_bsp** and **r_cmt_rx** are added in **Selected Modules**. The mark  on **r_cmt_rx** indicates occurrence of the Warning explained in the above 3.
Then, click **Generate Code**.



5. Click **OK** with changing anything.



Click here.

4.3.3 Create an LED Driving Program

Create a program that toggles the LED0 on/off state every 0.5 seconds using the compare match timer.

Open the file src/(the project name).c and modify it as shown below.

src/(the project name).c

```
#include "platform.h"
#include "r_cmt_rx_if.h"

/* LED Currently status */
uint32_t ledstatus = LED_OFF;

void call_back(void *pdata)
{
    if (ledstatus == LED_OFF)
    {
        /* Turn ON the LED0 If the status is LED_OFF */
        LED0 = LED_ON;
        ledstatus = LED_ON;
    }
    else
    {
        /* Turn OFF the LED0 If the status is LED_ON */
        LED0 = LED_OFF;
        ledstatus = LED_OFF;
    }
}

void main(void)
{
    uint32_t cmt_ch;

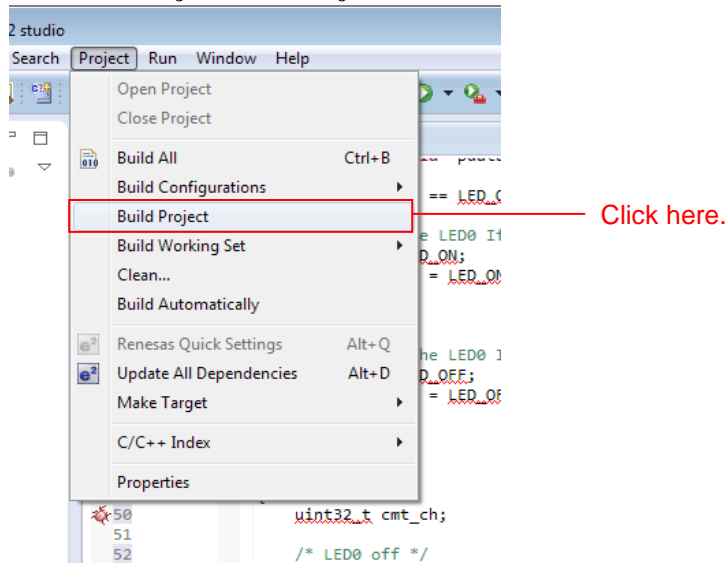
    /* LED0 off */
    LED0 =LED_OFF;
    /* Create of 0.5 second(2Hz) cyclic timer. */
    R_CMT_CreatePeriodic(2, &call_back, &cmt_ch);

    while(1);
}
```

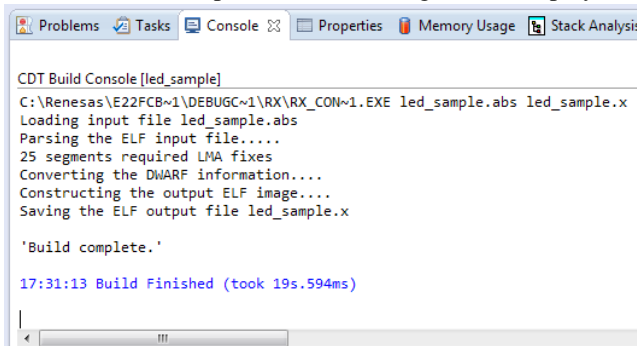
4.3.4 Build and Try Running the Program

Build the program just created and verify that it runs.

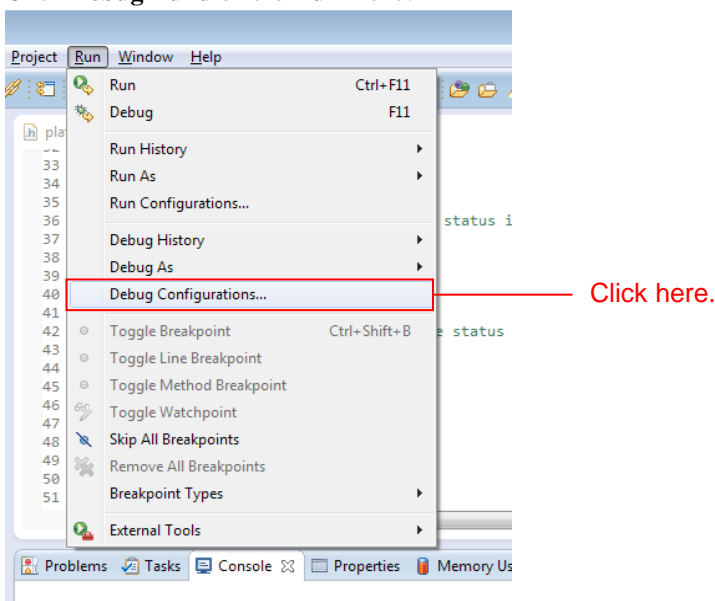
1. Click **Build Project** on the **Project** menu.




2. When the build completes, the following will be displayed in **Console** view.

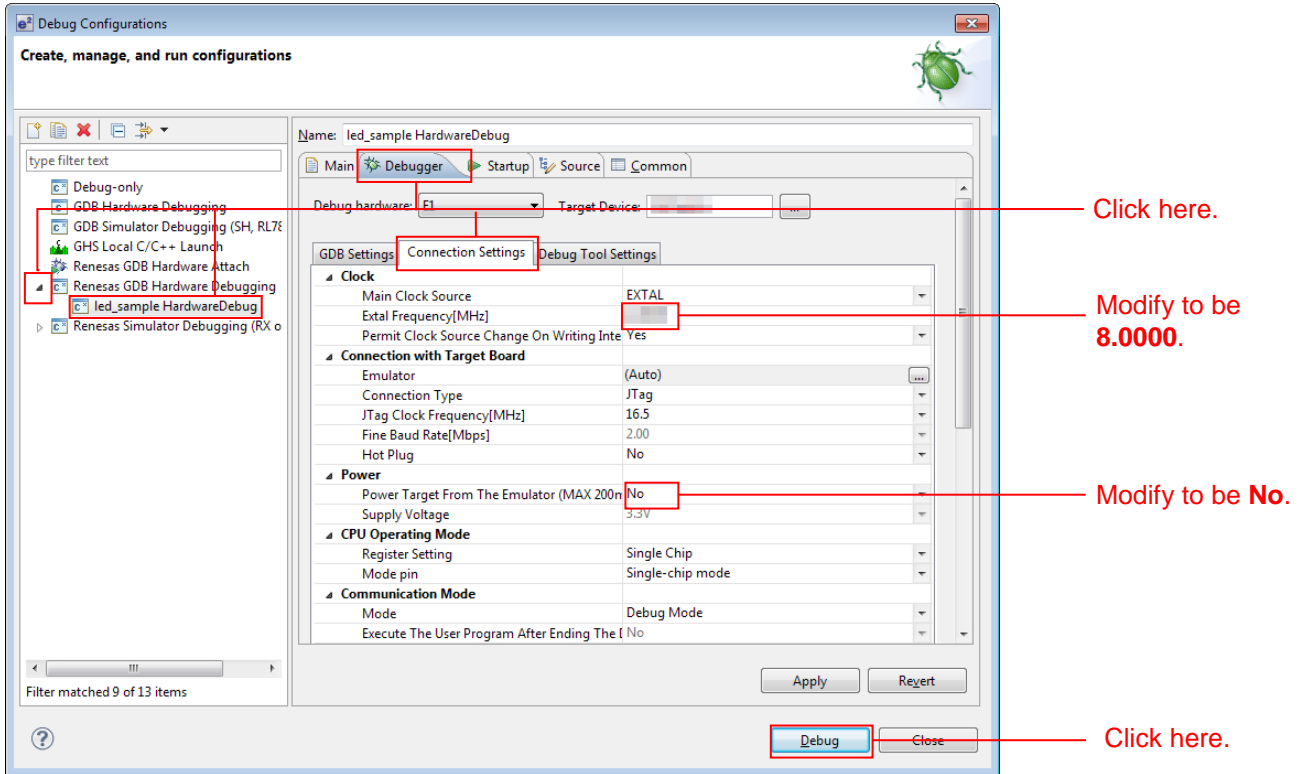


3. Click **Debug Build** on the **Run** menu.

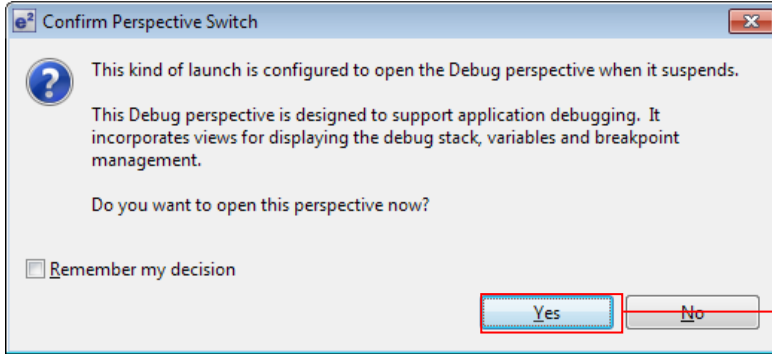


- Click  under the **Renesas GDB Hardware Debugging** and click **led_sample HardwareDebug**. Click the **Debugger** tab and click **Connection Setting**.
 Modify **EXTAL Frequency** to be **8.0000** and change **Provide Power from Emulator** to **No** *.
 When these changes have been made, click **Debug**.

Note : This is setting when using an external power supply. When supplying power from the emulator, select **Yes**.

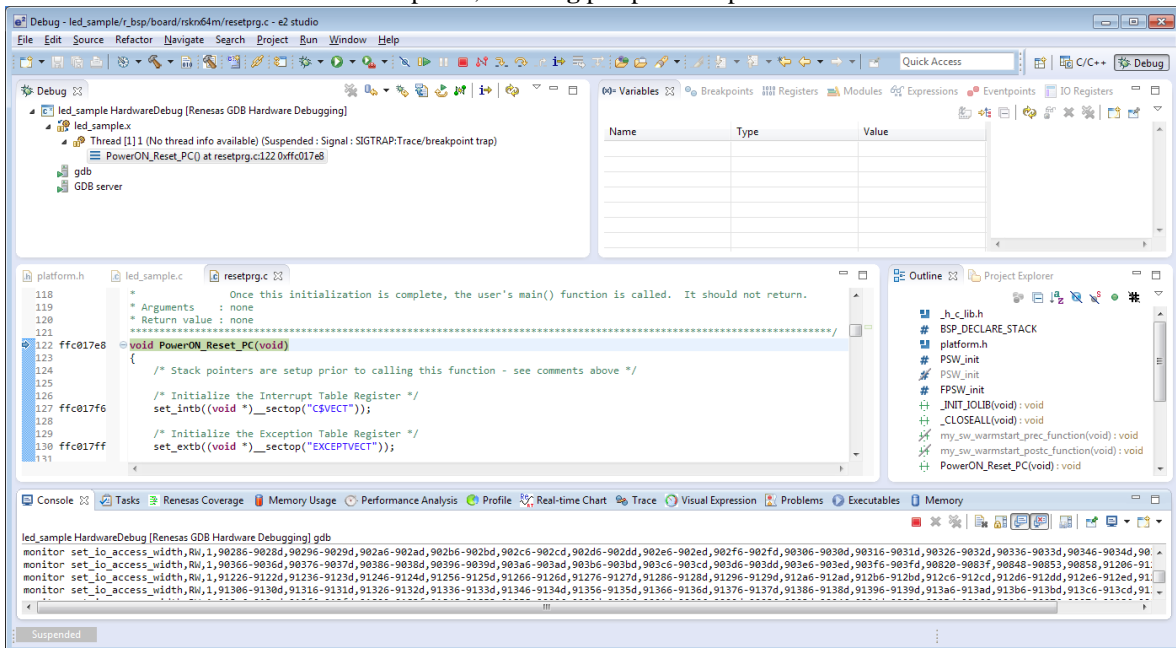


5. When the following message is displayed, click **Yes**.

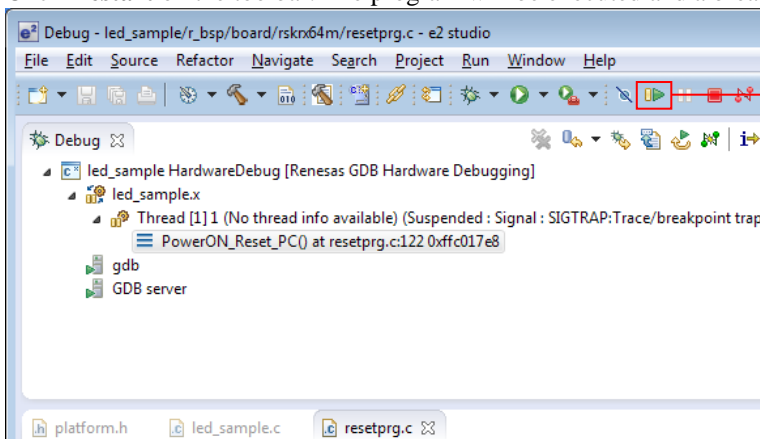


Click here.

6. When the load module download completes, a **Debug** perspective opens.



7. Click **Restart** on the toolbar. The program will be executed and a break will occur at the start of the main function.



Click here.

8. After the break at the start of the main function, click **Restart** on the tool bar again. The project will be run and the program will iterate toggling LED0 with a period of 0.5 seconds.

4.3.5 For location of the API information of each FIT module

For the API information of FIT module embedded in the project, refer to the **doc** folder of each FIT module folder.

5. RX Driver Package Application

5.1 RX Driver Package Application Structure

The RX Driver Package Application is a sample application program provided so that users can use the RX Driver Package easily. The RX Driver Package Application consists of an application program that operates using device drivers and middleware included in the RX Driver Package and a project file for building that application. This allows users to start evaluation quickly.

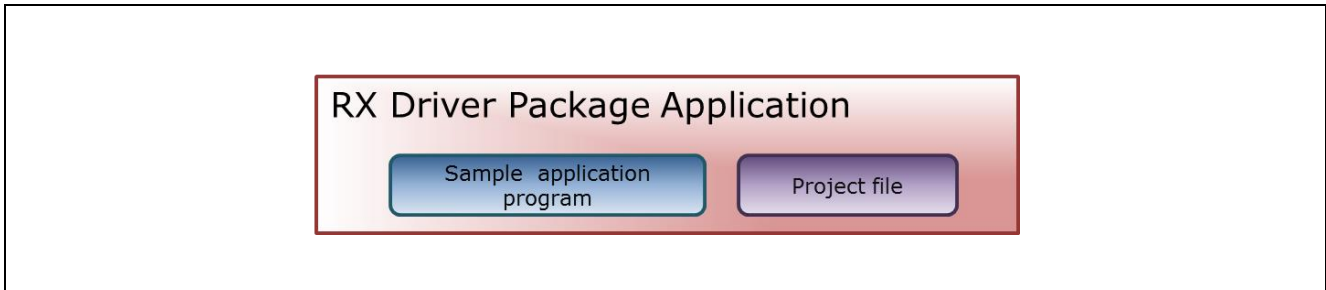


Figure 5-1 RX Driver Package Application Structure

Renesas plans to release a variety of types of this RX Driver Package Application in the future, such as system programs that operate using a combination of multiple drivers and middleware and evaluation programs for independent modules from the RX Driver Package.

For information of the latest RX Driver Package Application, refer to the “Products Supporting RX Driver Package Application” shown in the following URL.

<http://www.renesas.com/products/mpumcu/rx/child/fit.jsp>

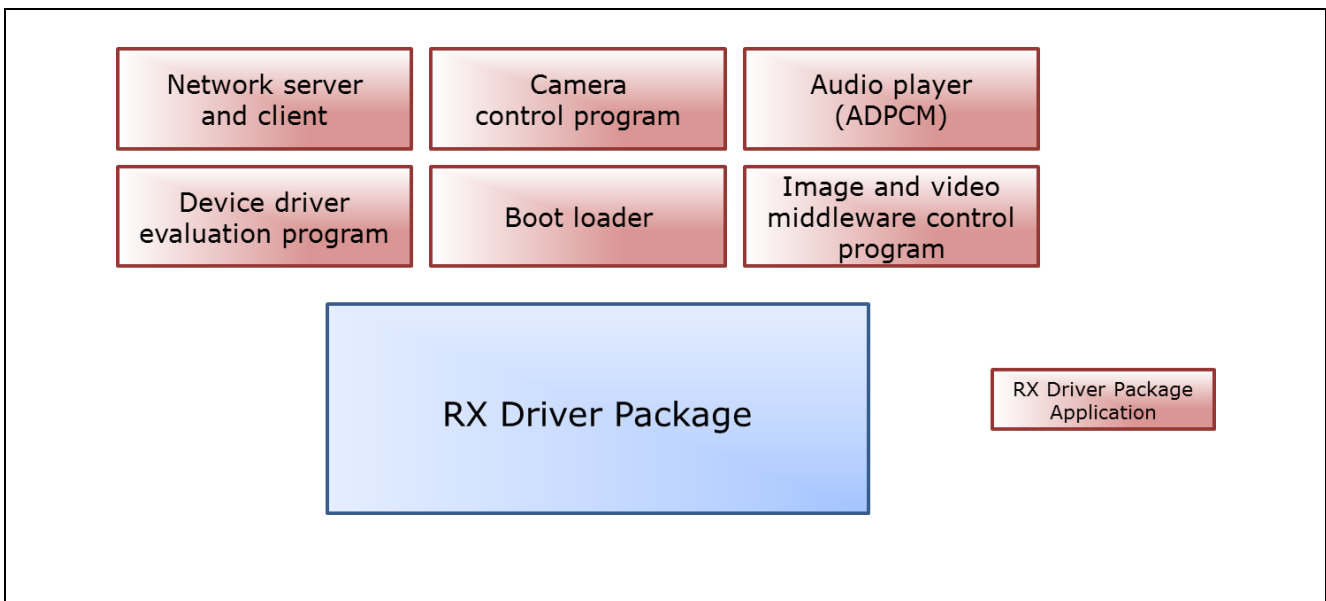


Figure 5-2 Types of RX Driver Package Application

6. Supplement

6.1 Commercial Version of Middleware and Drivers Supporting FIT

A list of the commercial version (paid) Middleware and Drivers for RX family is shown below.

For the information of the latest commercial version (paid) Middleware and Drivers, refer to the page of the Middleware and Drivers.

Table 6-1 list of the commercial version (paid) Middleware and Drivers for RX family

Commercial Version of Middleware and Drivers	URL	FIT Compliant
TCP/IP for Embedding M3S-T4-Tiny	https://www.renesas.com/en-us/products/software-tools/software-os-middleware-driver/communication-software/m3s-t4-tiny.html https://www.renesas.com/pt-br/products/software-tools/software-os-middleware-driver/communication-software/m3s-t4-tiny.html https://www.renesas.com/en-eu/products/software-tools/software-os-middleware-driver/communication-software/m3s-t4-tiny.html https://www.renesas.com/ja-ip/products/software-tools/software-os-middleware-driver/communication-software/m3s-t4-tiny.html https://www.renesas.com/en-sg/products/software-tools/software-os-middleware-driver/communication-software/m3s-t4-tiny.html https://www.renesas.com/en-in/products/software-tools/software-os-middleware-driver/communication-software/m3s-t4-tiny.html https://www.renesas.com/ko-kr/products/software-tools/software-os-middleware-driver/communication-software/m3s-t4-tiny.html https://www.renesas.com/zh-tw/products/software-tools/software-os-middleware-driver/communication-software/m3s-t4-tiny.html	Available

6.2 Differences from previous RDP for RX600/RX700 Series

After the release of RX64M/RX71M Group RX Driver Package Ver.1.02 (R01AN2606EJ), RX130/RX230/EX231/RX23T/RX24T Group were released, and many Firmware Integration Technology (FIT) modules have been updated.

Differences from RX64M/RX71M Group RX Driver Package Ver.1.02 (R01AN2606EJ0104) are shown in Table 6-2, Table 6-3 and Table 6-4.

The meaning of the terms shown in differences columns are as follows:

“N/A”	Does not support RX64M/RX71M Group.
“Same”	Supports RX64M/RX71M Group, and includes the same module as previous.
“Updated”	Supports RX64M/RX71M Group, and includes updated modules. Updated contents differ depending on the driver used. Check with the driver's document.
“Added”	Supports RX64M/RX71M Group; the modules added this time.

(1) Board Support Package (BSP)

Table 6-2 Board Support Package (BSP)

Module	Update Information	Rev
Board Support Package (BSP)	Updated	3.31

(2) Device Driver

Table 6-3 Device Driver

Module	Update Information	Rev
Voltage Detection Circuit (LVD)	N/A	1.50
Clock Generation Circuit (CGC)	N/A	1.31
Clock Frequency Accuracy Measurement Circuit (CAC)	N/A	1.10
Battery Backup (VBATT)	N/A	1.01
Interrupt Controller (IRQ)	Updated	1.90
Data Transfer Controller (DTC)	Updated	2.04
DMA Controller (DMAC)	Same	1.03
I/O Ports (GPIO)	Updated	2.00
Multi-Function Pin Controller (MPC)	Updated	2.00
Multi-pulse Timer Unit (MTU2a)	N/A	1.20
Compare Match Timer (CMT)	Updated	2.90
Compare Match Timer W (CMTW)	Same	1.10
Real-Time Clock (RTC)	Updated	2.41
Low Power Timer (LPT)	N/A	1.00
Independent Watchdog Timer (IWDT)	N/A	1.51
Serial Communications Interface (SCI: Asynchronous/Clock Synchronous)	Same	1.70
Serial Communications Interface with FIFO (SCIF: Asynchronous/Clock Synchronous)	Same	1.10
Serial Communications Interface with FIFO (SCIF: Device Driver for Serial Memory Control)	Same	1.08
Serial Communications Interface (SCI: Simple I2C Bus)	Updated	1.90
Serial Peripheral Interface (RSPI: Device Driver for Serial Memory Control)	Updated	1.11
Quad Serial Peripheral Interface (QSPI: Device Driver for Serial Memory Control)	Same	1.08

Module	Update Information	Rev
USB Basic Firmware	Updated	1.11
USB Host Mass Storage Class	Updated	1.11
USB Host Communication Device Class	Updated	1.11
USB Host Human Interface Device Class	Updated	1.11
USB Peripheral Mass Storage Class	Updated	1.11
USB Peripheral Communications Device Class	Updated	1.11
USB Peripheral Human Interface Device Class	Added	1.11
USB Basic Firmware mini	N/A	1.02
USB Host Mass Storage Class mini	N/A	1.02
USB Host Communication Device Class mini	N/A	1.02
USB Host Human Interface Device Class mini	N/A	1.02
USB Peripheral Mass Storage Class mini	N/A	1.02
USB Peripheral Communications Device Class mini	N/A	1.02
USB Peripheral Human Interface Device Class mini	N/A	1.02
IrDA Interface (IrDA)	N/A	1.01
CAN Module (CAN)	Added	2.02
CAN Module (RSCAN)	N/A	1.00
PTP Module for the Ethernet Controller (EPTPC)	Same	1.11
EPTPC Light Module	Same	1.10
Ethernet controller (ETHERC)	Updated	1.10
Parallel Data Capture Unit (PDC)	Updated	1.03
12-Bit A/D Converter (S12AD)	Updated	2.11
D/A Converter (DAC)	Updated	2.80
Flash Memory (Flash API)	Updated	1.63
Sampling Rate Converter (SRC)	Updated	1.11
Serial Sound Interface (SSI)	Updated	1.20
LCD Controller/Driver (LCDC)	N/A	1.00
Unique ID Read	N/A	1.00
Byte Queue Buffer (Data Management)	Updated	1.60
Long Queue Buffer (Data Management)	Updated	1.60

(3) Middleware/Interface Module

Table 6-4 Middleware/Interface Module

Module	Update Information	Rev
TCP/IP M3S-T4-Tiny for Embedding	Updated	2.05
Interface conversion module for Ethernet Driver and Embedded system M3S-T4-Tiny	Updated	1.04
Embedded TCP/IP M3S-T4-Tiny Socket API Module	Updated	1.30
DHCP client using the embedded TCP/IP M3S-T4-Tiny Module	Same	1.03
DNS client using the embedded TCP/IP M3S-T4-Tiny Module	Same	1.02
FTP server using the embedded TCP/IP M3S-T4-Tiny Module	Same	1.03
Web server using the embedded TCP/IP M3S-T4-Tiny Module	Same	1.04
File driver for FTP server and Web server Module	Same	1.01
Sound playback system and compression system (original ADPCM codec)	Same	3.03
M3S-TFAT-Tiny (FAT file system)	Same	3.02
M3S-TFAT-Tiny Memory Driver Interface Module	Same	1.02
Simple I2C Module for EEPROM Access	N/A	1.30
I2C Bus Interface (RIIC) Module for EEPROM Access	N/A	1.40
SPI Serial EEPROM Module	Updated	2.33
SPI Serial Flash memory Module	Same	2.33

6.3 Differences from previous RDP for RX100/RX200 Series

After the release of RX110/RX111/RX113/RX130/RX230/RX231/RX23T/RX24T Group RX Driver Package Ver.1.03 (R01AN3233EJ0103), FIT modules have been updated.

Differences from RX110/RX111/RX113/RX130/RX230/RX231/RX23T/RX24T Group RX Driver Package Ver.1.03 (R01AN3233EJ0103) are shown in the Table 6-5, Table 6-6 and Table 6-7.

The meaning of the terms shown in differences columns are as follows:

“N/A”	Does not support RX110/RX111/RX113/RX130/RX230/RX231/RX23T/RX24T Group
“Same”	Supports RX110/RX111/RX113/RX130/RX230/RX231/RX23T/RX24T Group, and includes the same module as previous.
“Updated”	Supports RX110/RX111/RX113/RX130/RX230/RX231/RX23T/RX24T Group, and includes updated modules. Updated contents differ depending on the driver used. Check with the driver's document.
“Added”	Supports RX110/RX111/RX113/RX130/RX230/RX231/RX23T/RX24T Group; the modules added this time.

(1) Board Support Package (BSP)

Table 6-5 Board Support Package (BSP)

Module	Update Information	Rev
Board Support Package (BSP)	Updated	3.31

(2) Device Driver

Table 6-6 Device Driver

Module	Update Information	Rev
Voltage Detection Circuit (LVD)	Same	1.50
Clock Generation Circuit (CGC)	Same	1.31
Clock Frequency Accuracy Measurement Circuit (CAC)	Same	1.10
Battery Backup (VBATT)	Same	1.01
Interrupt Controller (IRQ)	Updated	1.90
Data Transfer Controller (DTC)	Updated	2.04
DMA Controller (DMAC)	Same	1.03
I/O Ports (GPIO)	Same	2.00
Multi-Function Pin Controller (MPC)	Same	2.00
Multi-pulse Timer Unit (MTU2a)	Same	1.20
Compare Match Timer (CMT)	Same	2.90
Compare Match Timer W (CMTW)	N/A	1.10
Real-Time Clock (RTC)	Same	2.41
Low Power Timer (LPT)	Same	1.00
Independent Watchdog Timer (IWDT)	Same	1.51
Serial Communications Interface (SCI: Asynchronous/Clock Synchronous)	Same	1.70
Serial Communications Interface with FIFO (SCIF: Asynchronous/Clock Synchronous)	N/A	1.10
Serial Communications Interface with FIFO (SCIF: Device Driver for Serial Memory Control)	N/A	1.08

Module	Update Information	Rev
Serial Communications Interface (SCI: Simple I2C Bus)	Same	1.90
Serial Peripheral Interface (RSPI: Device Driver for Serial Memory Control)	Updated	1.11
Quad Serial Peripheral Interface (QSPI: Device Driver for Serial Memory Control)	N/A	1.08
USB Basic Firmware	N/A	1.11
USB Host Mass Storage Class	N/A	1.11
USB Host Communication Device Class	N/A	1.11
USB Host Human Interface Device Class	N/A	1.11
USB Peripheral Mass Storage Class	N/A	1.11
USB Peripheral Communications Device Class	N/A	1.11
USB Peripheral Human Interface Device Class	N/A	1.11
USB Basic Firmware mini	Same	1.02
USB Host Mass Storage Class mini	Same	1.02
USB Host Communication Device Class mini	Same	1.02
USB Host Human Interface Device Class mini	Same	1.02
USB Peripheral Mass Storage Class mini	Same	1.02
USB Peripheral Communications Device Class mini	Same	1.02
USB Peripheral Human Interface Device Class mini	Same	1.02
IrDA Interface (IrDA)	Same	1.01
CAN Module (CAN)	N/A	2.02
CAN Module (RSCAN)	Same	1.00
PTP Module for the Ethernet Controller (EPTPC)	N/A	1.11
EPTPC Light Module	N/A	1.10
Ethernet controller (ETHERC)	N/A	1.10
Parallel Data Capture Unit (PDC)	N/A	1.03
12-Bit A/D Converter (S12AD)	Same	2.11
D/A Converter (DAC)	Same	2.80
Flash Memory (Flash API)	Updated	1.63
Sampling Rate Converter (SRC)	N/A	1.11
Serial Sound Interface (SSI)	Updated	1.20
LCD Controller/Driver (LCDC)	Same	1.00
Unique ID Read	Same	1.00
Byte Queue Buffer (Data Management)	Same	1.60
Long Queue Buffer (Data Management)	Same	1.60

(3) Middleware/Interface Module

Table 6-7 Middleware/Interface Module

Module	Update Information	Rev
TCP/IP M3S-T4-Tiny for Embedding	Updated	2.05
Interface conversion module for Ethernet Driver and Embedded system M3S-T4-Tiny	Updated	1.04
Embedded TCP/IP M3S-T4-Tiny Socket API Module	Updated	1.30
DHCP client using the embedded TCP/IP M3S-T4-Tiny Module	Same	1.03
DNS client using the embedded TCP/IP M3S-T4-Tiny Module	Same	1.02
FTP server using the embedded TCP/IP M3S-T4-Tiny Module	Same	1.03
Web server using the embedded TCP/IP M3S-T4-Tiny Module	Same	1.04
File driver for FTP server and Web server Module	Same	1.01
Sound playback system and compression system (original ADPCM codec)	Same	3.03
M3S-TFAT-Tiny (FAT file system)	Same	3.02
M3S-TFAT-Tiny Memory Driver Interface Module	Same	1.02
Simple I2C Module for EEPROM Access	N/A	1.30
I2C Bus Interface (RIIC) Module for EEPROM Access	N/A	1.40
SPI Serial EEPROM Module	Updated	2.33
SPI Serial Flash memory Module	Same	2.33

Website and Support

Renesas Electronics Website

<http://www.renesas.com/>

Inquiries

<http://www.renesas.com/contact/>

All trademarks and registered trademarks are the property of their respective owners.

Revision History

Rev.	Date	Description	
		Page	Summary
1.00	July 15, 2016	-	First edition issued

General Precautions in the Handling of MPU/MCU Products

The following usage notes are applicable to all MPU/MCU products from Renesas. For detailed usage notes on the products covered by this document, refer to the relevant sections of the document as well as any technical updates that have been issued for the products.

1. Handling of Unused Pins

Handle unused pins in accord with the directions given under Handling of Unused Pins in the manual.

— The input pins of CMOS products are generally in the high-impedance state. In operation with an unused pin in the open-circuit state, extra electromagnetic noise is induced in the vicinity of LSI, an associated shoot-through current flows internally, and malfunctions occur due to the false recognition of the pin state as an input signal become possible. Unused pins should be handled as described under Handling of Unused Pins in the manual.

2. Processing at Power-on

The state of the product is undefined at the moment when power is supplied.

— The states of internal circuits in the LSI are indeterminate and the states of register settings and pins are undefined at the moment when power is supplied.

In a finished product where the reset signal is applied to the external reset pin, the states of pins are not guaranteed from the moment when power is supplied until the reset process is completed.

In a similar way, the states of pins in a product that is reset by an on-chip power-on reset function are not guaranteed from the moment when power is supplied until the power reaches the level at which resetting has been specified.

3. Prohibition of Access to Reserved Addresses

Access to reserved addresses is prohibited.

— The reserved addresses are provided for the possible future expansion of functions. Do not access these addresses; the correct operation of LSI is not guaranteed if they are accessed.

4. Clock Signals

After applying a reset, only release the reset line after the operating clock signal has become stable. When switching the clock signal during program execution, wait until the target clock signal has stabilized.

— When the clock signal is generated with an external resonator (or from an external oscillator) during a reset, ensure that the reset line is only released after full stabilization of the clock signal. Moreover, when switching to a clock signal produced with an external resonator (or by an external oscillator) while program execution is in progress, wait until the target clock signal is stable.

5. Differences between Products

Before changing from one product to another, i.e. to a product with a different type number, confirm that the change will not lead to problems.

— The characteristics of an MPU or MCU in the same group but having a different part number may differ in terms of the internal memory capacity, layout pattern, and other factors, which can affect the ranges of electrical characteristics, such as characteristic values, operating margins, immunity to noise, and amount of radiated noise. When changing to a product with a different part number, implement a system-evaluation test for the given product.

Notice

1. Descriptions of circuits, software and other related information in this document are provided only to illustrate the operation of semiconductor products and application examples. You are fully responsible for the incorporation of these circuits, software, and information in the design of your equipment. Renesas Electronics assumes no responsibility for any losses incurred by you or third parties arising from the use of these circuits, software, or information.
2. Renesas Electronics has used reasonable care in preparing the information included in this document, but Renesas Electronics does not warrant that such information is error free. Renesas Electronics assumes no liability whatsoever for any damages incurred by you resulting from errors in or omissions from the information included herein.
3. Renesas Electronics does not assume any liability for infringement of patents, copyrights, or other intellectual property rights of third parties by or arising from the use of Renesas Electronics products or technical information described in this document. No license, express, implied or otherwise, is granted hereby under any patents, copyrights or other intellectual property rights of Renesas Electronics or others.
4. You should not alter, modify, copy, or otherwise misappropriate any Renesas Electronics product, whether in whole or in part. Renesas Electronics assumes no responsibility for any losses incurred by you or third parties arising from such alteration, modification, copy or otherwise misappropriation of Renesas Electronics product.
5. Renesas Electronics products are classified according to the following two quality grades: "Standard" and "High Quality". The recommended applications for each Renesas Electronics product depends on the product's quality grade, as indicated below.
"Standard": Computers; office equipment; communications equipment; test and measurement equipment; audio and visual equipment; home electronic appliances; machine tools; personal electronic equipment; and industrial robots etc.
"High Quality": Transportation equipment (automobiles, trains, ships, etc.); traffic control systems; anti-disaster systems; anti-crime systems; and safety equipment etc.
Renesas Electronics products are neither intended nor authorized for use in products or systems that may pose a direct threat to human life or bodily injury (artificial life support devices or systems, surgical implantations etc.), or may cause serious property damages (nuclear reactor control systems, military equipment etc.). You must check the quality grade of each Renesas Electronics product before using it in a particular application. You may not use any Renesas Electronics product for any application for which it is not intended. Renesas Electronics shall not be in any way liable for any damages or losses incurred by you or third parties arising from the use of any Renesas Electronics product for which the product is not intended by Renesas Electronics.
6. You should use the Renesas Electronics products described in this document within the range specified by Renesas Electronics, especially with respect to the maximum rating, operating supply voltage range, movement power voltage range, heat radiation characteristics, installation and other product characteristics. Renesas Electronics shall have no liability for malfunctions or damages arising out of the use of Renesas Electronics products beyond such specified ranges.
7. Although Renesas Electronics endeavors to improve the quality and reliability of its products, semiconductor products have specific characteristics such as the occurrence of failure at a certain rate and malfunctions under certain use conditions. Further, Renesas Electronics products are not subject to radiation resistance design. Please be sure to implement safety measures to guard them against the possibility of physical injury, and injury or damage caused by fire in the event of the failure of a Renesas Electronics product, such as safety design for hardware and software including but not limited to redundancy, fire control and malfunction prevention, appropriate treatment for aging degradation or any other appropriate measures. Because the evaluation of microcomputer software alone is very difficult, please evaluate the safety of the final products or systems manufactured by you.
8. Please contact a Renesas Electronics sales office for details as to environmental matters such as the environmental compatibility of each Renesas Electronics product. Please use Renesas Electronics products in compliance with all applicable laws and regulations that regulate the inclusion or use of controlled substances, including without limitation, the EU RoHS Directive. Renesas Electronics assumes no liability for damages or losses occurring as a result of your noncompliance with applicable laws and regulations.
9. Renesas Electronics products and technology may not be used for or incorporated into any products or systems whose manufacture, use, or sale is prohibited under any applicable domestic or foreign laws or regulations. You should not use Renesas Electronics products or technology described in this document for any purpose relating to military applications or use by the military, including but not limited to the development of weapons of mass destruction. When exporting the Renesas Electronics products or technology described in this document, you should comply with the applicable export control laws and regulations and follow the procedures required by such laws and regulations.
10. It is the responsibility of the buyer or distributor of Renesas Electronics products, who distributes, disposes of, or otherwise places the product with a third party, to notify such third party in advance of the contents and conditions set forth in this document, Renesas Electronics assumes no responsibility for any losses incurred by you or third parties as a result of unauthorized use of Renesas Electronics products.
11. This document may not be reproduced or duplicated in any form, in whole or in part, without prior written consent of Renesas Electronics.
12. Please contact a Renesas Electronics sales office if you have any questions regarding the information contained in this document or Renesas Electronics products, or if you have any other inquiries.

(Note 1) "Renesas Electronics" as used in this document means Renesas Electronics Corporation and also includes its majority-owned subsidiaries.

(Note 2) "Renesas Electronics product(s)" means any product developed or manufactured by or for Renesas Electronics.



SALES OFFICES

Renesas Electronics Corporation

<http://www.renesas.com>

Refer to "<http://www.renesas.com/>" for the latest and detailed information.

Renesas Electronics America Inc.

2801 Scott Boulevard Santa Clara, CA 95050-2549, U.S.A.
Tel: +1-408-588-6000, Fax: +1-408-588-6130

Renesas Electronics Canada Limited

9251 Yonge Street, Suite 8309 Richmond Hill, Ontario Canada L4C 9T3
Tel: +1-905-237-2004

Renesas Electronics Europe Limited

Dukes Meadow, Millboard Road, Bourne End, Buckinghamshire, SL8 5FH, U.K.
Tel: +44-1628-585-100, Fax: +44-1628-585-900

Renesas Electronics Europe GmbH

Arcadiastrasse 10, 40472 Düsseldorf, Germany
Tel: +49-211-6503-0, Fax: +49-211-6503-1327

Renesas Electronics (China) Co., Ltd.

Room 1709, Quantum Plaza, No.27 ZhiChunLu Haidian District, Beijing 100191, P.R.China
Tel: +86-10-8235-1155, Fax: +86-10-8235-7679

Renesas Electronics (Shanghai) Co., Ltd.

Unit 301, Tower A, Central Towers, 555 Langao Road, Putuo District, Shanghai, P. R. China 200333
Tel: +86-21-2226-0888, Fax: +86-21-2226-0999

Renesas Electronics Hong Kong Limited

Unit 1801-1811, 18/F., Tower 2, Grand Century Place, 193 Prince Edward Road West, Mongkok, Kowloon, Hong Kong
Tel: +852-2265-6688, Fax: +852 2886-9022

Renesas Electronics Taiwan Co., Ltd.

13F, No. 363, Fu Shing North Road, Taipei 10543, Taiwan
Tel: +886-2-8175-9600, Fax: +886-2-8175-9670

Renesas Electronics Singapore Pte. Ltd.

80 Bendemeer Road, Unit #06-02 Hyflux Innovation Centre, Singapore 339949
Tel: +65-6213-0200, Fax: +65-6213-0300

Renesas Electronics Malaysia Sdn.Bhd.

Unit 1207, Block B, Menara Amcorp, Amcorp Trade Centre, No. 18, Jln Persiaran Barat, 46050 Petaling Jaya, Selangor Darul Ehsan, Malaysia
Tel: +60-3-7955-9390, Fax: +60-3-7955-9510

Renesas Electronics India Pvt. Ltd.

No.777C, 100 Feet Road, HALII Stage, Indiranagar, Bangalore, India
Tel: +91-80-67208700, Fax: +91-80-67208777

Renesas Electronics Korea Co., Ltd.

12F., 234 Teheran-ro, Gangnam-Gu, Seoul, 135-080, Korea
Tel: +82-2-558-3737, Fax: +82-2-558-5141