
On-Chip Debugging Emulator E1/E20

Troubleshooting Guide (for the RX600 Series)

R20AN0045EJ0102
Rev.1.02
Mar. 29, 2011

Outline

This document gives examples of problems that may arise while using the E1 or E20 on-chip debugging emulator in combination with RX600-series MCUs and remedies for these problems.

Some error messages vary with the version of the debugger. All examples given in this document use E1/E20 Emulator Software V.1.01 Release 00.

Contents

1.	Troubleshooting on Startup	3
1.1	Why Does the Warning Message "Toolchain 'Renesas RX Standard Toolchain', version 'x.xx.x' is missing" Appear after I Load a Workspace?	3
1.2	Why Does the Warning Message "Target device driver missing, or connection cancelled" Appear When I Try to Start Up the Debugger?	3
1.3	Why is the [Emulator Serial No.] Section of the [Initial Settings] Dialog Box Blank?	4
1.4	Why Does the Warning Message "The device ID code does not match the one for the selected device." Appear When I Start Up the Debugger?	5
1.5	Why Does the [Confirm Firmware] Dialog Box Appear?	6
1.6	Why Does the [ID Code verification] Dialog Box Appear?	6
1.7	Why Does the Message "Includes invalid value or symbol." Appear When I Enter an ID Code in the [ID Code verification] Dialog Box?	7
1.8	Why Does the Message "Unable to connect to the emulator ()" Appear?	7
1.9	Why Does the Warning Message "Cannot detect the user system. Please check the connection between the emulator and the user system." Appear?	8
1.10	Why Does the Warning Message "Power on the user system and press OK." Appear?	8
1.11	Why Does the Warning Message "A timeout error. The command is not executable because the signal on the RESET pin is active." Appear?	9
1.12	Why Does the Warning Message "A JTAG communication error. Please retry with reducing the JTAG clock." Appear?	9
1.13	Why Does the Warning Message "A communication error." Appear?	10
1.14	Why Does the Warning Message "The emulator failed to connect with the MCU. There is a possibility that pin states or operating mode of the MCU is not correct." Appear?	10
2.	Troubleshooting in Operations after Startup	11
2.1	What is the Procedure When the Downloaded Program is not Displayed Correctly After I Start Up the Debugger?	11
2.2	What is the Procedure When I Try to Execute a Debugging Command but It is Not Accepted?	12
2.3	Why Are the Values of I/O Registers Shown in the [Memory] Window Incorrect?	12
2.4	What is the Procedure When I Expand the RIIC (I ² C bus interface) Entry in the [IO] Window to View the Values of Registers but the Values are Incorrect because the [IO] Window Reads ICDRR (I ² C Bus Receive Data Register) Every Time the Program Stops?	12
2.5	Why Do Values in Data Flash Memory Change Every Time I View Them in the [Memory] Window?	13
2.6	Why Does the Message "The setting of the peripheral module clock (PCLK) is outside the range. Please check the setting of the input clock (EXTAL) and the system and the system clock control register (SCKCR)." Appear and Programming Fail?	13
2.7	What is the Procedure When Rewriting the Flash Memory through the Program Succeeded with the Emulator but Failed with the Actual MCU?	13
2.8	What is the Procedure When the Debugger Cannot Read the Latest Values from Location in the On-Chip Flash Memory That Have been Altered by a User Program?	14
2.9	Why Don't Values Change as Expected during Realtime RAM Monitoring by the E20?	15
2.10	Why Does the Warning Message "Not enough memory" Appear When I Download a Program?	15
3.	ID-Code Protection	16
3.1	What is ID-Code Protection?	16
3.2	Handling of ID-Code Protection by the E1 and E20	16
3.3	What is the Procedure When I Don't Remember the ID Code?	17
4.	USB Driver	18
4.1	Checking That the USB Driver Has been Installed	18

1. Troubleshooting on Startup

1.1 Why Does the Warning Message “Toolchain ‘Renesas RX Standard Toolchain’, version ‘x.xx.x’ is missing” Appear after I Load a Workspace?

- This message indicates that a compatible compiler has not been installed or the version of the compiler that was used to create the workspace is not present on the host computer.
- Newly install a compatible compiler or follow the instructions to select a compatible version of the compiler.
- If you do not need to execute a build, you can ignore this message and start debugging with the E1 or E20.

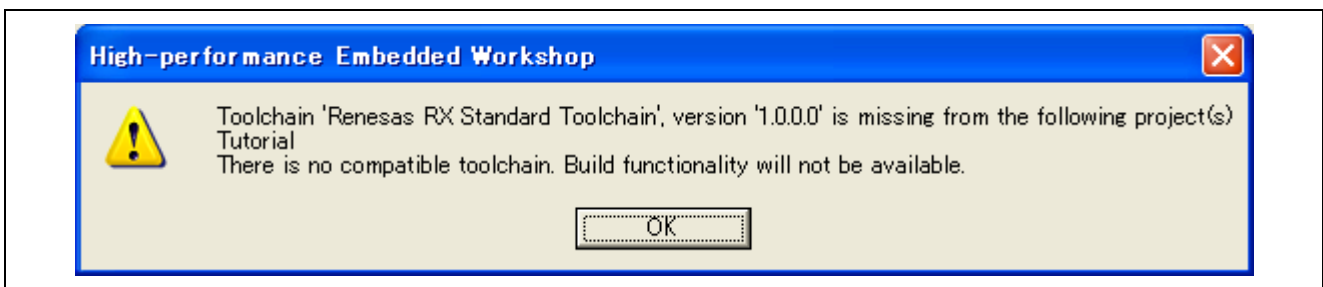


Figure 1.1 Compiler Version Does Not Match

1.2 Why Does the Warning Message “Target device driver missing, or connection cancelled” Appear When I Try to Start Up the Debugger?

- This message appearing first indicates that the E1 and E20 software has not been installed yet.
- Install the E1 and E20 software.

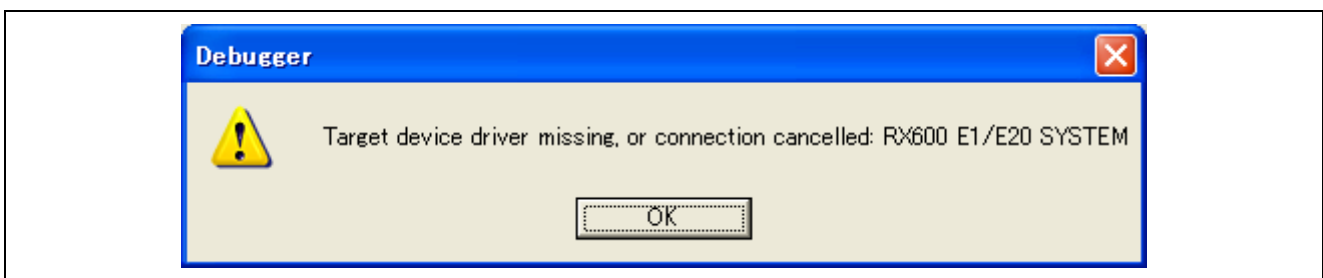


Figure 1.2 Target Device Driver Missing

1.3 Why is the [Emulator Serial No.] Section of the [Initial Settings] Dialog Box Blank?

- This indicates that the host computer has not recognized the E1 or E20 emulator. Check that the USB cable is correctly connected and, if you are using the E20, that the power switch on the E20 is ON, and then click on the [Refresh] button. If a serial number is still not displayed, refer to section 4, USB Driver.

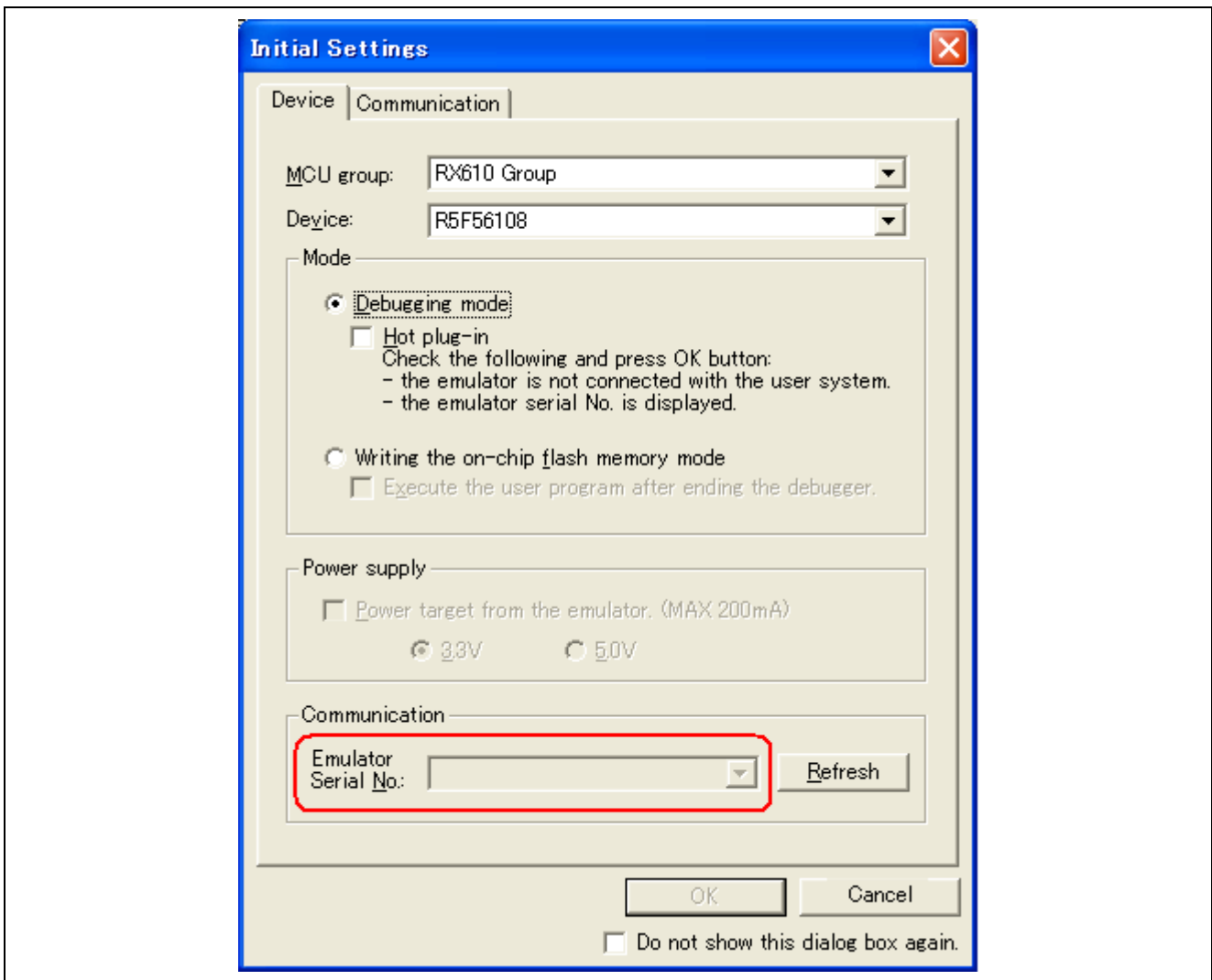


Figure 1.3 Emulator Serial Number Not Displayed

1.4 Why Does the Warning Message “The device ID code does not match the one for the selected device.” Appear When I Start Up the Debugger?

- This message indicates that the device selected in the [Initial Settings] dialog box does not match the actual device on the user system. Select the correct device name in the [Initial Settings] dialog box (Figure 1.5).

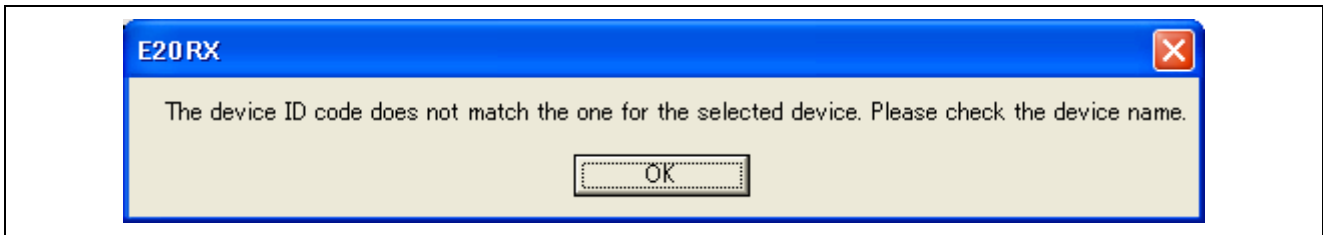


Figure 1.4 Device ID Code Does Not Match

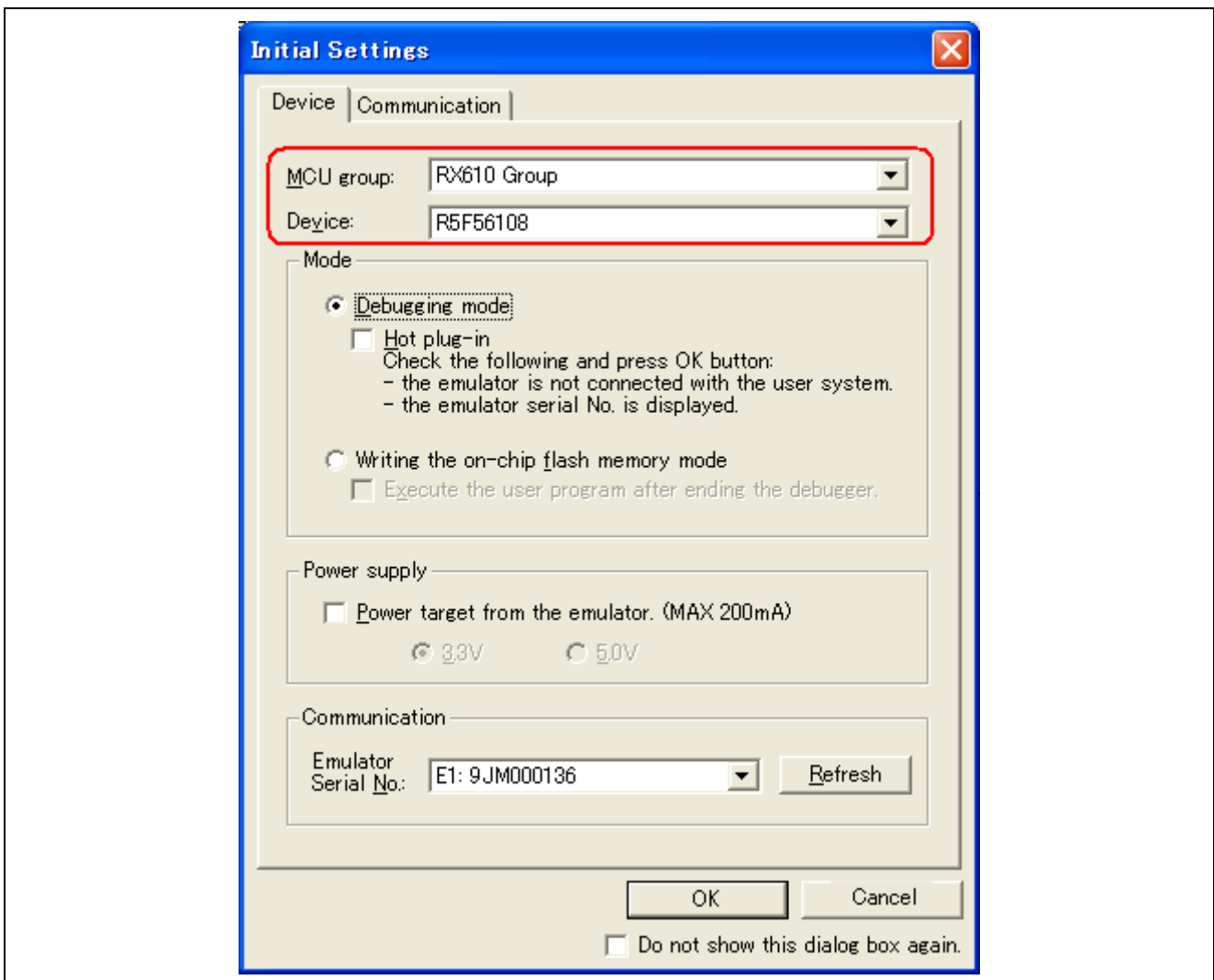


Figure 1.5 Selecting an MCU Group and Device

1.5 Why Does the [Confirm Firmware] Dialog Box Appear?

- This indicates that the firmware version corresponding to the emulator software and the firmware version in the E1 or E20 emulator are not the same. Click on the [Yes] button regardless of the version numbers shown in the dialog box. Debugging is not possible after [No] has been selected.

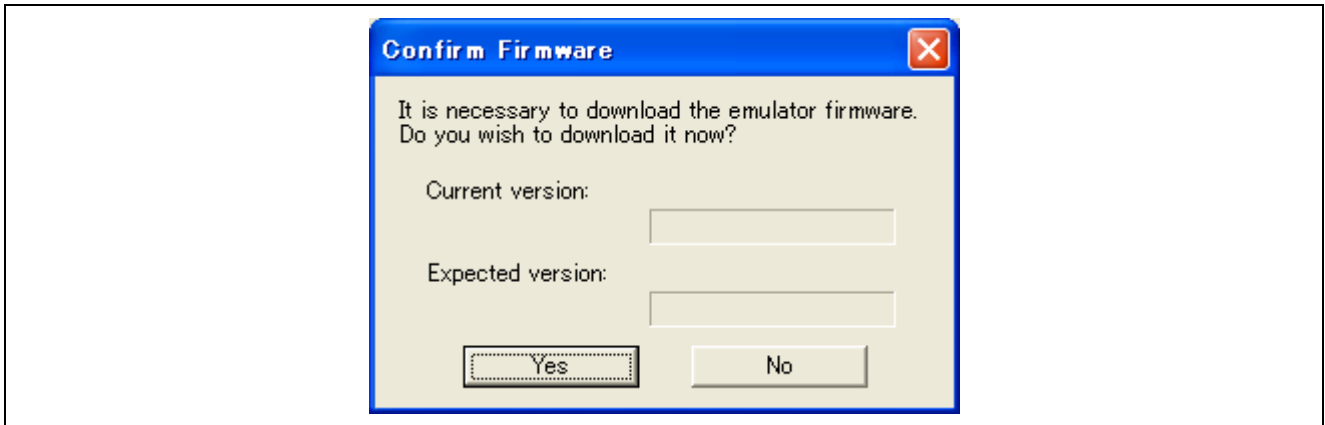


Figure 1.6 [Confirm Firmware] Dialog Box

1.6 Why Does the [ID Code verification] Dialog Box Appear?

- This indicates that ID-code protection is in effect. Enter the ID code that has been programmed in the flash memory of the MCU. For details on ID-code protection and what to do when you do not know the ID code, refer to section 3, ID-Code Protection.

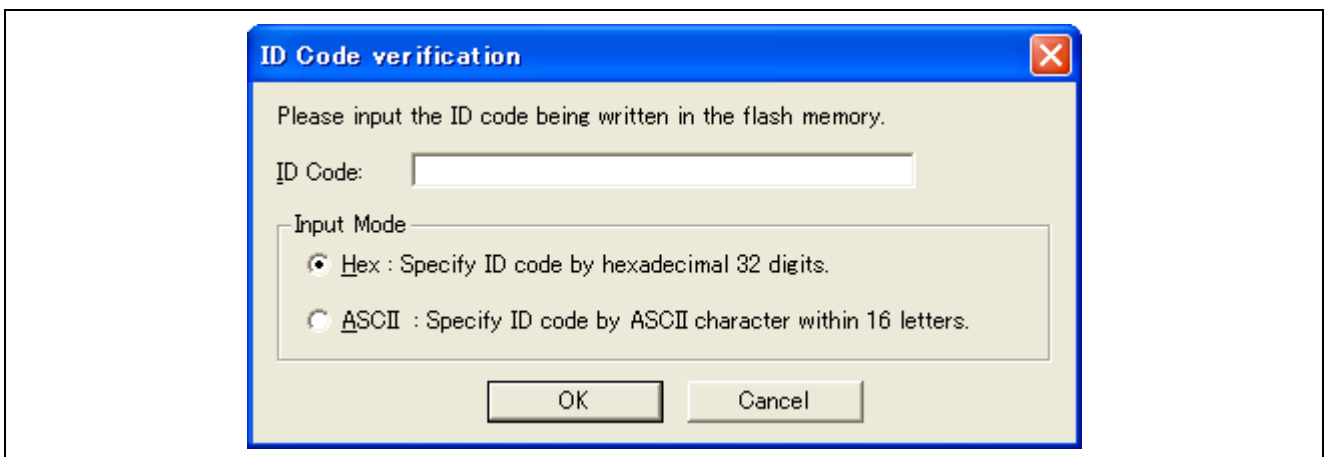


Figure 1.7 [ID Code verification] Dialog Box

1.7 Why Does the Message “Includes invalid value or symbol:” Appear When I Enter an ID Code in the [ID Code verification] Dialog Box?

- This message indicates that the entered ID code was incorrect.
- Check the ID code again. The ID code must consist of 32 bits, including the control code.

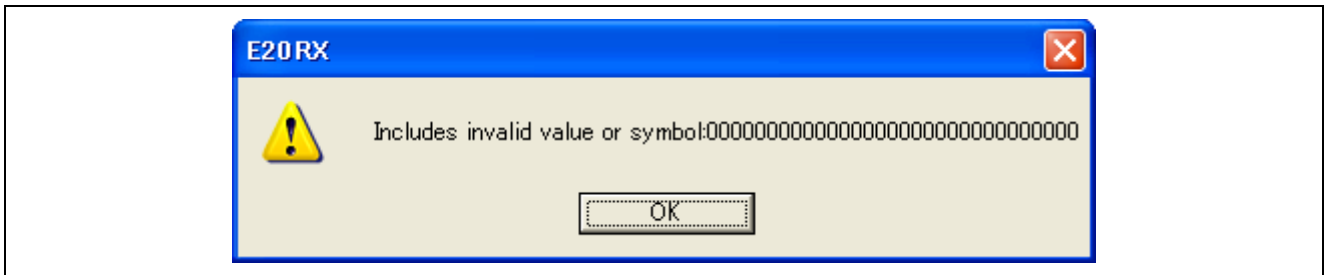


Figure 1.8 Includes Invalid Value or Symbol

1.8 Why Does the Message “Unable to connect to the emulator (.)” Appear?

- This message indicates that the E1 or E20 emulator is not correctly connected to the host computer. Refer to section 1.3, Why is the [Emulator Serial No.] Section of the [Initial Settings] Dialog Box Blank?.

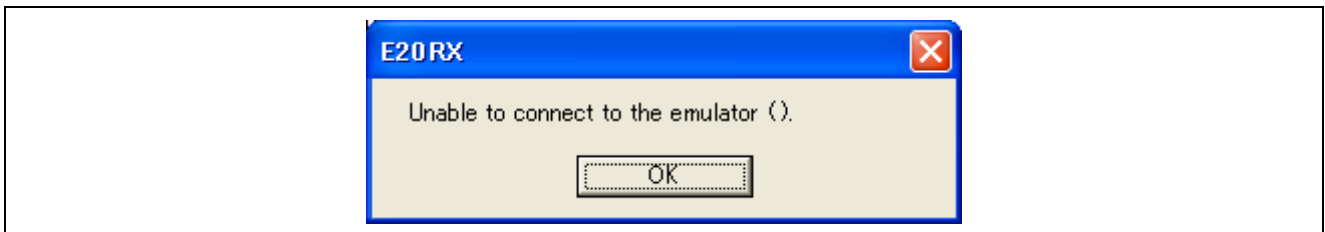


Figure 1.9 Unable to Connect to the Emulator

1.9 Why Does the Warning Message “Cannot detect the user system. Please check the connection between the emulator and the user system.” Appear?

- Check that the E1 or E20 connector is firmly connected to the user system.
- If you are using the E1, check that pin 14 of the emulator connector is connected to GND. The E1 recognizes the connection of the user system when it detects that this pin is at the low level.
- If you are using the E20, check that pin 5 of the emulator connector is connected to GND. The E20 recognizes the connection of the user system when it detects that this pin is at the low level.

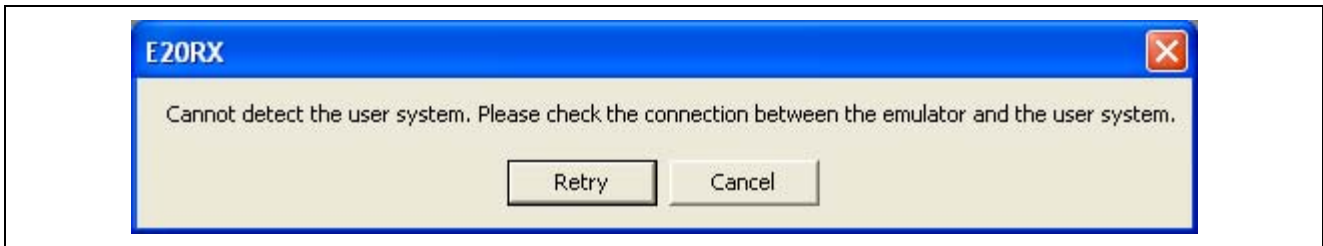


Figure 1.10 Cannot Detect the User System

1.10 Why Does the Warning Message “Power on the user system and press OK.” Appear?

- Check that the user system is supplied with power.
- Check that the VCC pin of the emulator connector is connected to VCC on the user system.

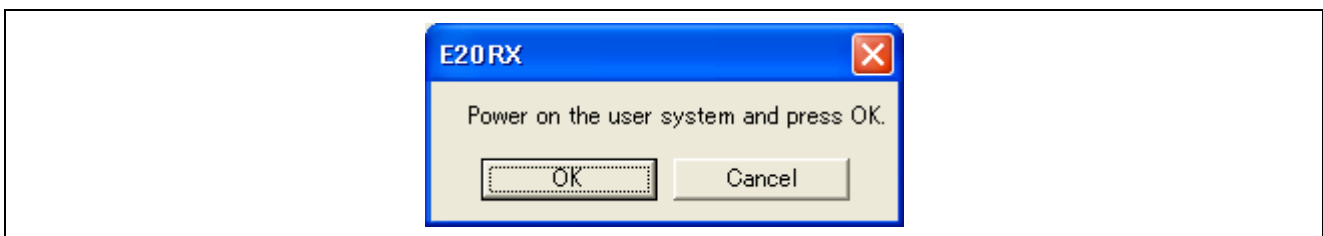


Figure 1.11 Turn the Power on

1.11 Why Does the Warning Message “A timeout error. The command is not executable because the signal on the RESET pin is active.” Appear?

- This message indicates that the MCU cannot be reset. Ensure that the RES# pin of the emulator connector and the reset circuit on the user system are not fixed to the low level.

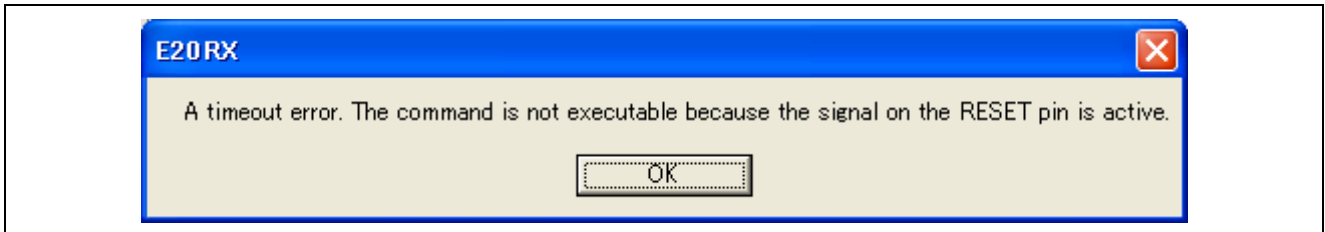


Figure 1.12 Timeout Error

1.12 Why Does the Warning Message “A JTAG communication error. Please retry with reducing the JTAG clock.” Appear?

This message indicates that the MCU cannot operate normally or the connection between the MCU and the emulator is incorrect. Although there are a number of possible causes, typical examples are listed below.

- Check the connection between the MCU and the emulator connector.
- When an RX610-group MCU is in use, the connection pattern between the MCU and the emulator connector depends on whether the emulator is being used as an on-chip debugging emulator or in the boot mode. Check that the emulator connector (attached to the E1 or E20) is the one for an on-chip debugging emulator.
- If you are using an extension cable to connect the MCU and the emulator connector, try using a standard cable instead.
- Check whether a filtering circuit is placed between the MCU and the emulator connector. If this is the case, temporarily remove the filtering circuit and check the operation.
- Check that the handling of pins necessary for the correct operation of the MCU (pins associated with power supply and reset, e.g. VCC, GND, VCL, RESET) is correct.
- Check that the oscillator circuit connected to the MCU is operating correctly.
- Check that the EMLE pin is pulled-down (this pin must not be directly connected to GND) and connected to the emulator connector. If the EMLE pin is not connected to the emulator connector, the pin must be manually switched to the high level before debugging proceeds.
- If you are using the E20, check that the GND bus lead of the Mictor connector is correctly connected to GND (“GND bus lead” refers to the pin at the center of the connector). Pin 5 of the Mictor connector is not GND. Failure to correctly connect the bus lead to GND will lead to this error and to unstable operation.



Figure 1.13 JTAG Communication Error

1.13 Why Does the Warning Message “A communication error.” Appear?

Possible causes are the same as those given in section 0,

Why Does the Warning Message “A JTAG communication error. Please retry with reducing the JTAG clock.” Appear?.



Figure 1.14 Communication Error

1.14 Why Does the Warning Message “The emulator failed to connect with the MCU. There is a possibility that pin states or operating mode of the MCU is not correct.” Appear?

This message indicates that the emulator cannot connect to the MCU.

- Ensure that the levels on pins MD0 and MD1 are not those for the boot mode. The emulator cannot establish a connection in boot mode.

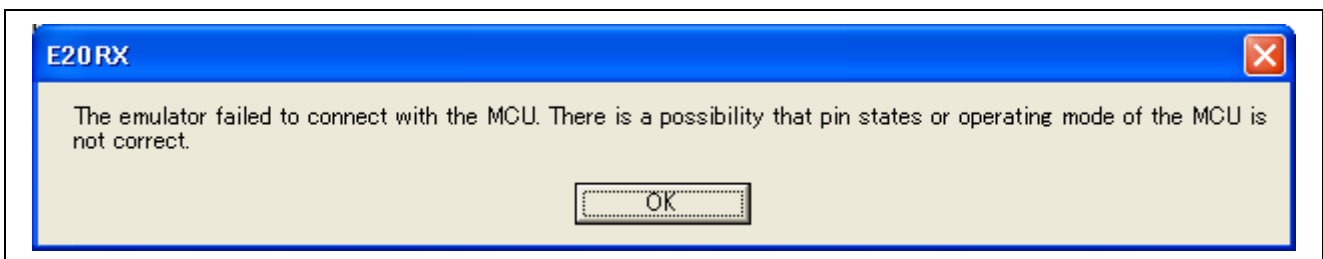


Figure 1.15 Emulator Failed to Connect with the MCU

2. Troubleshooting in Operations after Startup

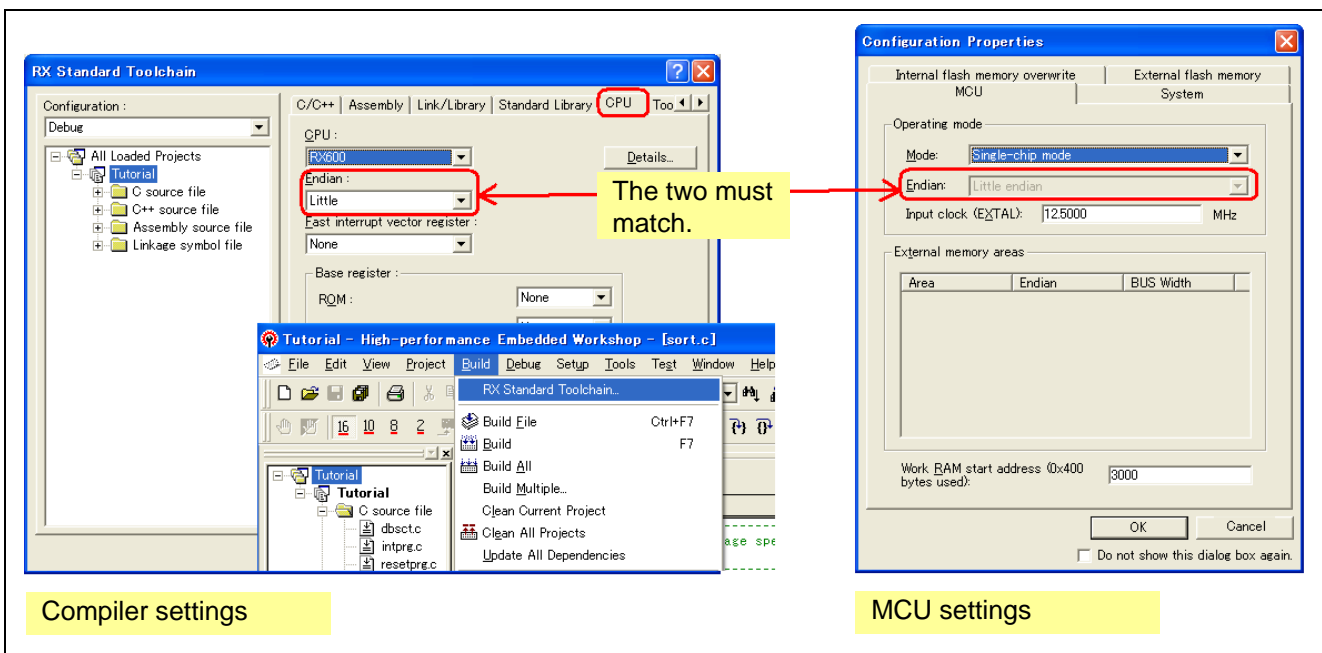
2.1 What is the Procedure When the Downloaded Program is not Displayed Correctly After I Start Up the Debugger?

The endian is selectable for a RX600-series MCU. If the endian selected for the MCU does not match that selected when the program was created, the debugger cannot recognize the reset vector value of the downloaded program.

To check the endian selected when the program was created, select [Build]->[RX Standard Toolchain] in the High-performance Embedded Workshop to open the [RX Standard Toolchain] dialog box and see the [CPU] page (which shows compiler settings).

To check the endian selected for the MCU, see [Endian] on the [MCU] page of the [Configuration Properties] dialog box.

If the selections do not match, modify either of them.



2.2 What is the Procedure When I Try to Execute a Debugging Command but It is Not Accepted?

Check whether you have selected [Writing the on-chip flash memory mode] in the [Initial Settings] dialog box. If the message shown below is displayed in the output window, the emulator is operating in the flash programmer mode. The only possible action in the flash programmer mode is downloading. To execute debugging commands, select the debugging mode instead.

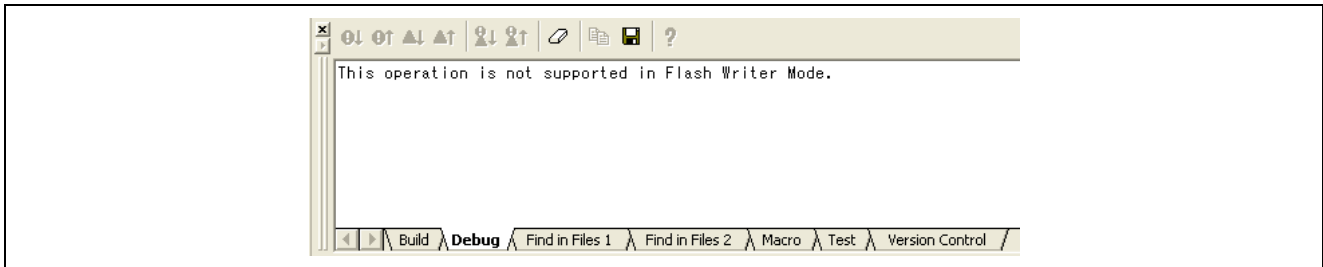


Figure 2.1 Display in the Output Window

2.3 Why Are the Values of I/O Registers Shown in the [Memory] Window Incorrect?

Access to I/O registers must be in units of a defined size.

When the display in the [Memory] window is in byte units, for example, the values of registers for which access must be in word units are not displayed correctly.

For this reason, we recommend the use of the [IO] window for viewing and setting values of the I/O registers.

2.4 What is the Procedure When I Expand the RIIC (I²C bus interface) Entry in the [IO] Window to View the Values of Registers but the Values are Incorrect because the [IO] Window Reads ICDRR (I²C Bus Receive Data Register) Every Time the Program Stops?

After the entry for a module is expanded in the [IO] window, the window reads the values of the registers of that module every time the program stops.

However, reading changes the states of some registers, including ICDRR in RIIC. Such registers should not be read from the [IO] window.

Select either of the following ways to prevent the [IO] window from reading such registers.

- Collapse the entry for the IO module containing the register that you do not want to be read. Modules collapsed in the [IO] window will not be read.
- Select [Lock Refresh] from the popup menu of the [IO] window. This prevents reading for the [IO] window. You can still update the values of I/O registers at a desired time by selecting [Refresh].

2.5 Why Do Values in Data Flash Memory Change Every Time I View Them in the [Memory] Window?

The default state (immediately after erasure) of the Data Flash in RX600-series MCUs is undefined so different values are read out every time. This is simply one of the MCU's specifications and is not a defect.

2.6 Why Does the Message “The setting of the peripheral module clock (PCLK) is outside the range. Please check the setting of the input clock (EXTAL) and the system and the system clock control register (SCKCR).” Appear and Programming Fail?

The combination of the value specified for [Input clock (EXTAL)] in the [Configuration Properties] dialog box and the setting of the peripheral module clock selection bits in the system clock control register (SCKCR) produces a frequency beyond the allowed range of peripheral-module clock (PCLK) frequencies.

Check both settings.

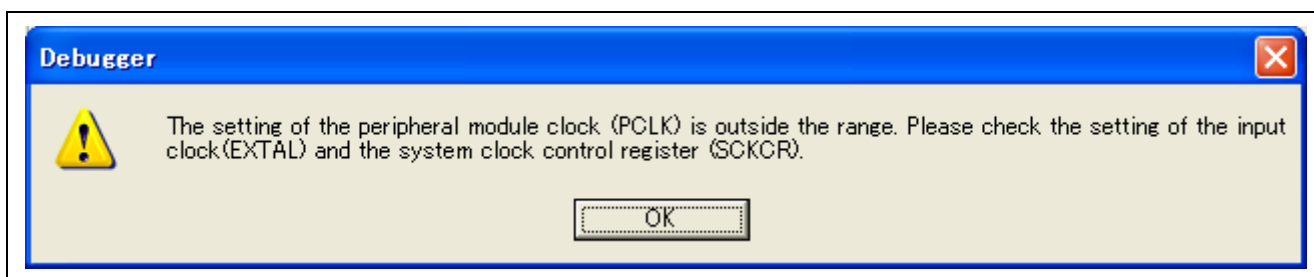


Figure 2.2 Peripheral-Module Clock (PCLK) Designation is out of Bounds

2.7 What is the Procedure When Rewriting the Flash Memory through the Program Succeeded with the Emulator but Failed with the Actual MCU?

The data in the FCU ROM must be transferred to the FCU RAM before rewriting the flash memory in an RX600-series MCU.

When the emulator is in use, the emulator program transfers data from the FCU ROM to the FCU RAM, so rewriting the flash memory is possible even if the user program does not handle the transfer.

For usage of the FCU ROM and FCU RAM, refer to the user's manual for the MCU.

2.8 What is the Procedure When the Debugger Cannot Read the Latest Values from Location in the On-Chip Flash Memory That Have been Altered by a User Program?

Since caching of the on-chip flash memory on the host computer is enabled by default, it is not possible to read the most recently updated values from the on-chip flash memory.

If the on-chip flash memory is to be updated by a user program, select the [Debugging the program re-writing the internal flash.] checkbox on the [System] page of the [Configuration Properties] dialog box.

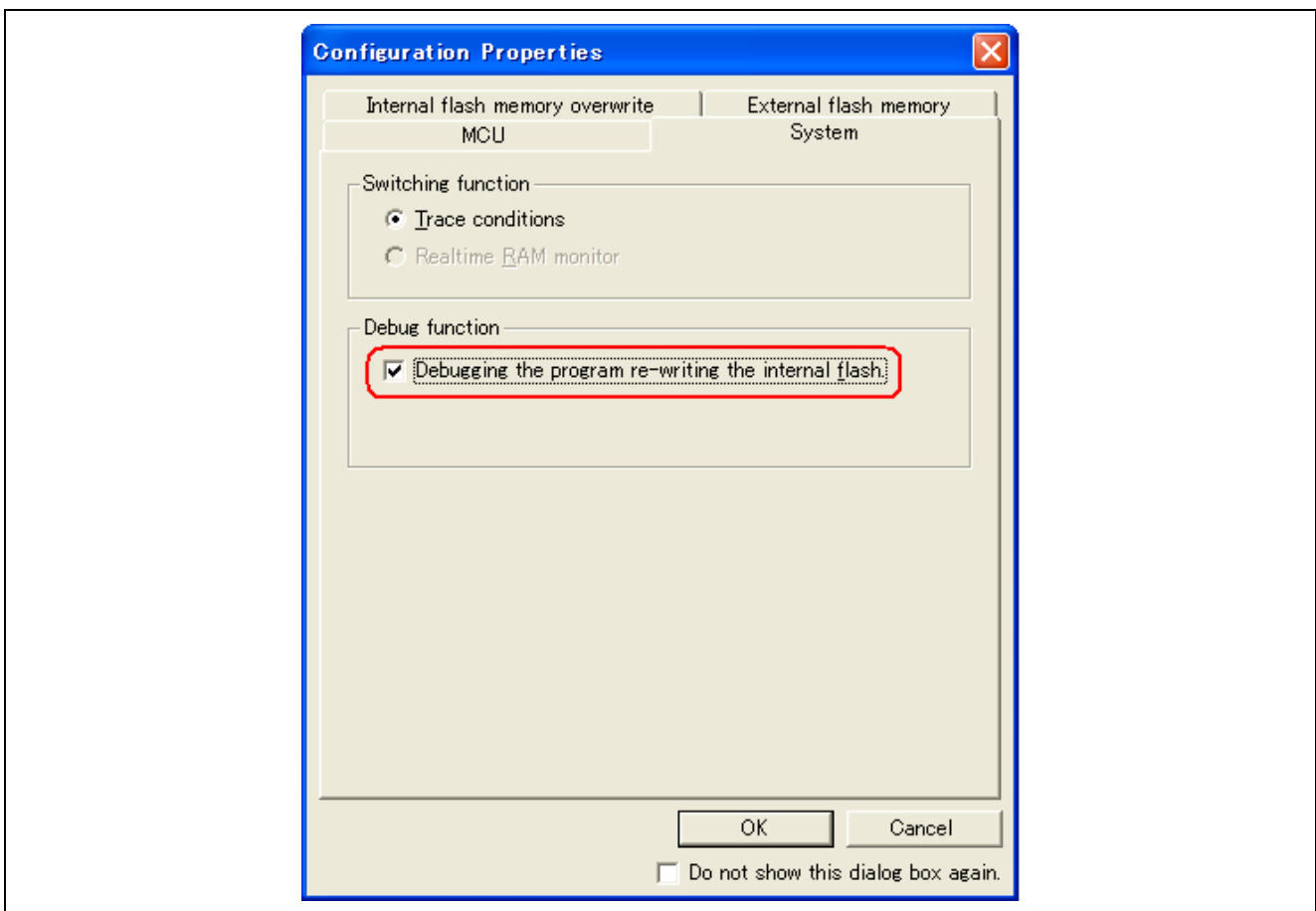


Figure 2.3 Debugging of Programs That Involve Rewriting of the On-Chip Flash Memory

2.9 Why Don't Values Change as Expected during Realtime RAM Monitoring by the E20?

Check the following points.

- [Realtime RAM monitor] must be selected in the [Configuration Properties] dialog box.
- Automatic variables cannot be monitored by realtime RAM monitoring because values are stored in registers or on the stack.
- If optimization by the compiler eliminates a variable to be monitored or its assignment, declare the variable as volatile to prevent this optimization.
- DMA access cannot be monitored by realtime RAM monitoring.
- Monitoring of I/O registers for which the values are constantly being updated is not possible because realtime RAM monitoring is actually realized by monitoring reading and writing of memory by the MCU. Detecting changes of values in areas that are not read or written by programs is thus not possible.

2.10 Why Does the Warning Message "Not enough memory" Appear When I Download a Program?

- This message indicates that the destination is an access-prohibited area.
- See the memory map in the hardware manual for the MCU and check that the download module does not include a reserved area (access-prohibited area).
- If the download module includes external address space, check that [Single-chip mode] is not selected in the [Operating mode] section of the [Configuration Properties] dialog box that appears when the emulator is booted up.

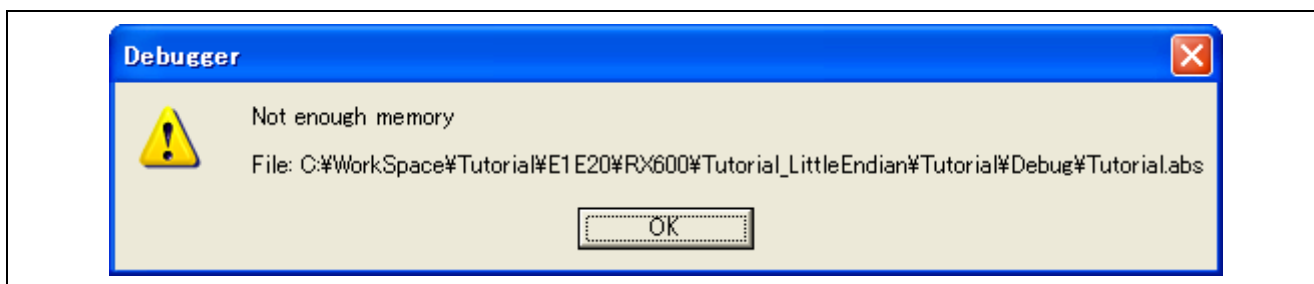


Figure 2.4 Not Enough Memory

3. ID-Code Protection

3.1 What is ID-Code Protection?

ID-code protection is a function that prevents the reading and modification of flash memory by third parties. This is a security function of the MCU rather than the debugger.

After the user writes an ID code to a specific address in the on-chip flash memory, anyone who does not know the ID code is unable to read or modify data in the on-chip flash memory. For details on ID-code protection, refer to the hardware manual for the MCU.

3.2 Handling of ID-Code Protection by the E1 and E20

Handling of ID-code protection varies with the operating mode selected in the process of booting up the emulator.

- [Debugging mode]

ID-code protection that has been set by a user program is ineffective in this mode (i.e. all bytes of the ID code are FF even when downloading or control via the [Memory] window is attempted) except in cases where the flash memory has been updated by the user program.

- [Writing the on-chip flash memory mode]

The ID code that has been set by a user program is effective.

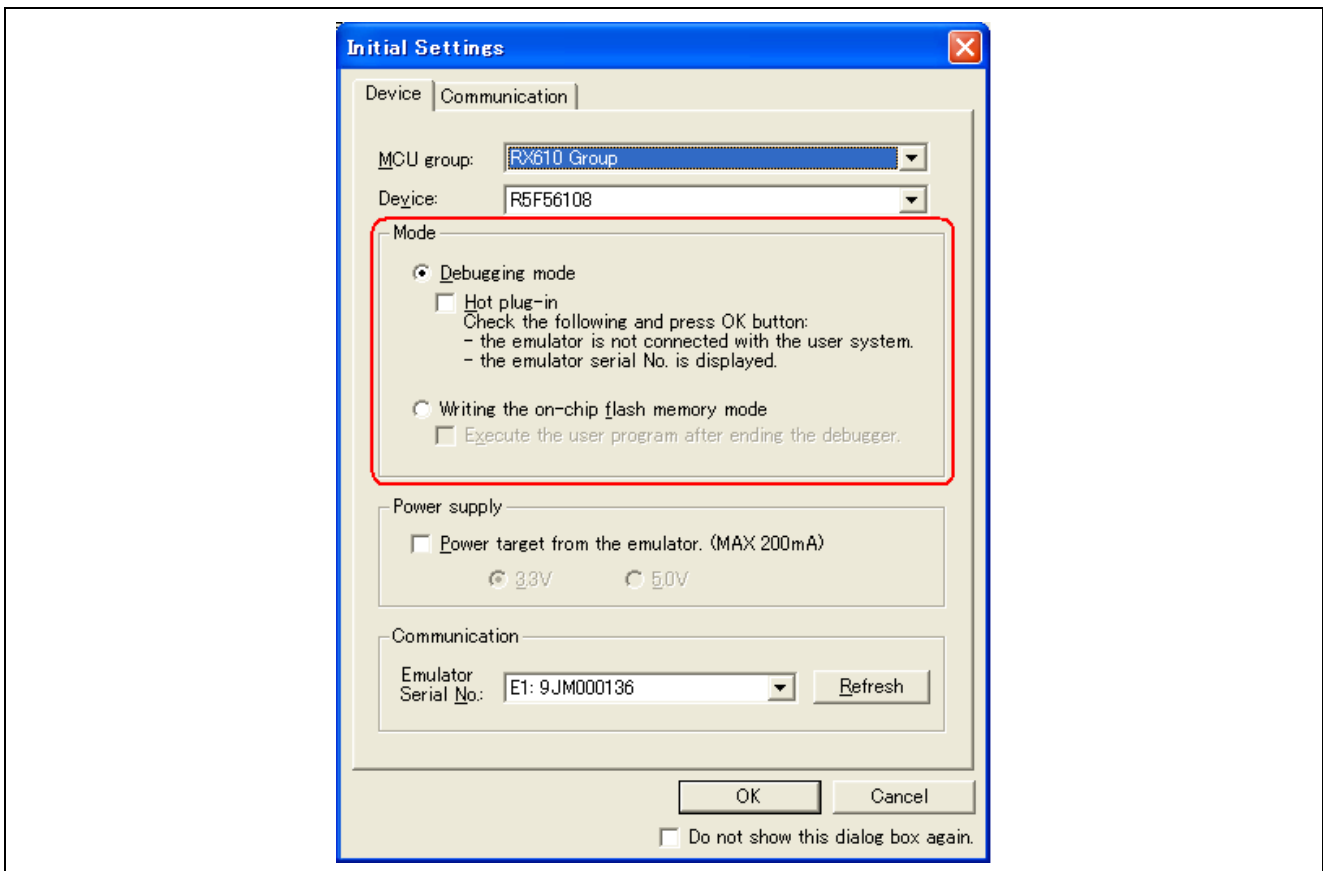


Figure 3.1 Operating Mode

3.3 What is the Procedure When I Don't Remember the ID Code?

If you do not remember the ID code to be entered in the [ID Code verification] dialog box, you can try to do so in the three ways described below.

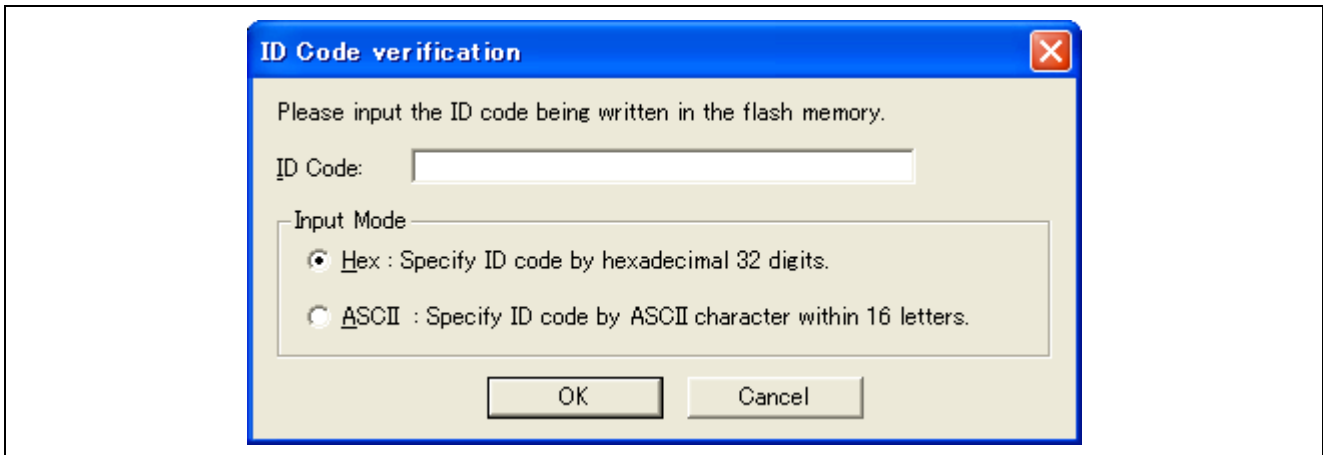


Figure 3.2 [ID Code verification] Dialog Box

- First, enter an ID code in which all digits are 0.
The ID code area is adjacent to the vector area. All digits may be 0 unless a particular ID code has been intentionally specified by a user program.
- When you know which program was the last to have been downloaded
Use a simulator to download the program, check the value at the ID-code address, and then enter that value in the [ID Code verification] dialog box.
- When you do not know which program was the last to have been downloaded
Use an on-board programmer (e.g. the Flash Development Toolkit) to connect to the MCU. When the dialog box for ID-code authentication appears, enter any ID code.
Depending on the control code for ID-code protection (refer to the hardware manual for the MCU), the contents of the flash memory can become erasable when the ID code does not match.

If you still cannot connect the debugger even in any of the above ways, Renesas is unable to offer any other solution.

4. USB Driver

4.1 Checking That the USB Driver Has been Installed

To check that the USB driver is working correctly, see the state of the ACT LED on the E1 or E20 emulator after connecting the emulator and host computer via a USB interface cable.

Table 4.1 shows the states of the ACT LED and their meanings.

Table 4.1 ACT States and Meanings

ACT LED	Communication between the Host Computer and Emulator	Checkpoint
Illuminated	The emulator is usable.	The USB driver has correctly been installed.
Blinking	The emulator is not usable yet because the USB driver has not been recognized.	Check whether the USB driver has correctly been installed (by following the procedure below).
Not illuminated	Communication has not been established.	Check whether the USB interface cable is correctly connected, the host computer and emulator are supplied with power, and no items are damaged.

Follow the procedures below to check whether the USB driver has successfully been installed.

- (1) Open the properties window for [My Computer] ([System Properties] dialog box).
- (2) Open the [Hardware] tabbed page and click on the [Device Manager] button as shown in Figure 4.1.

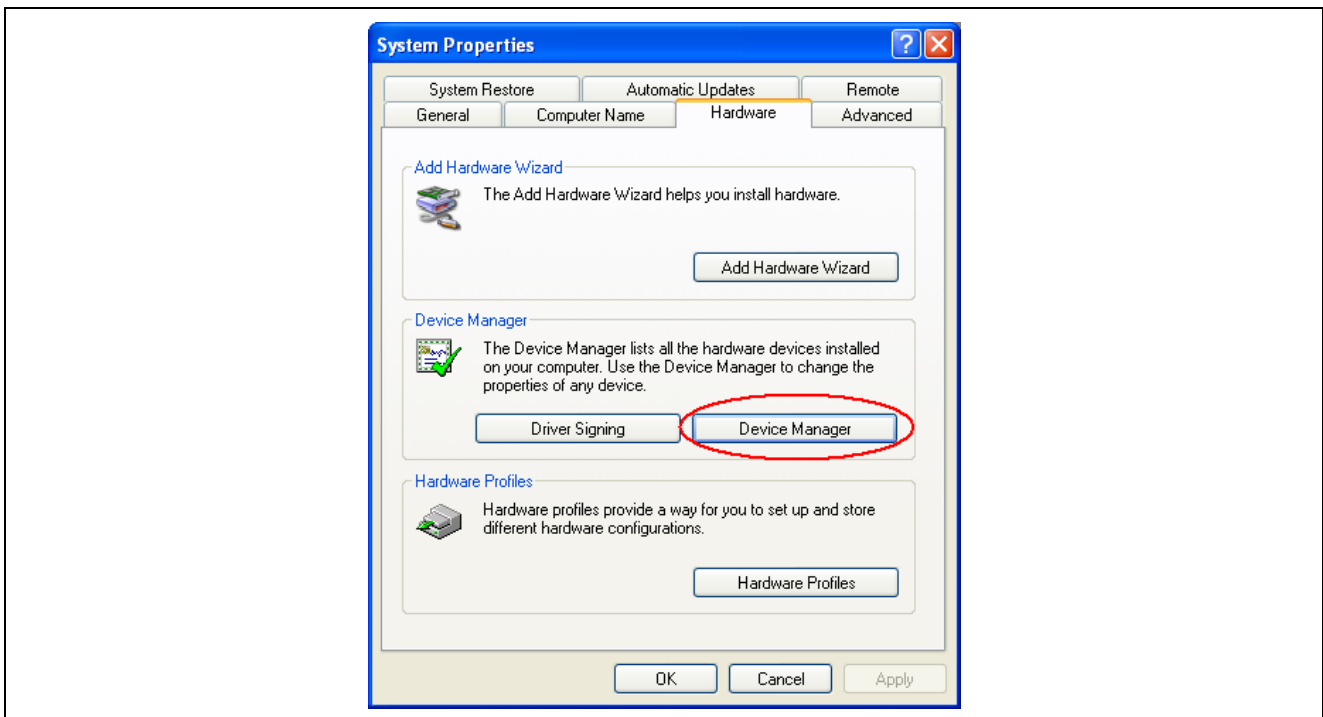


Figure 4.1 [System Properties] Dialog Box

(3) Check that [Renesas E-Series USB Driver] is shown under the [Renesas Emulator] category (Figure 4.2).

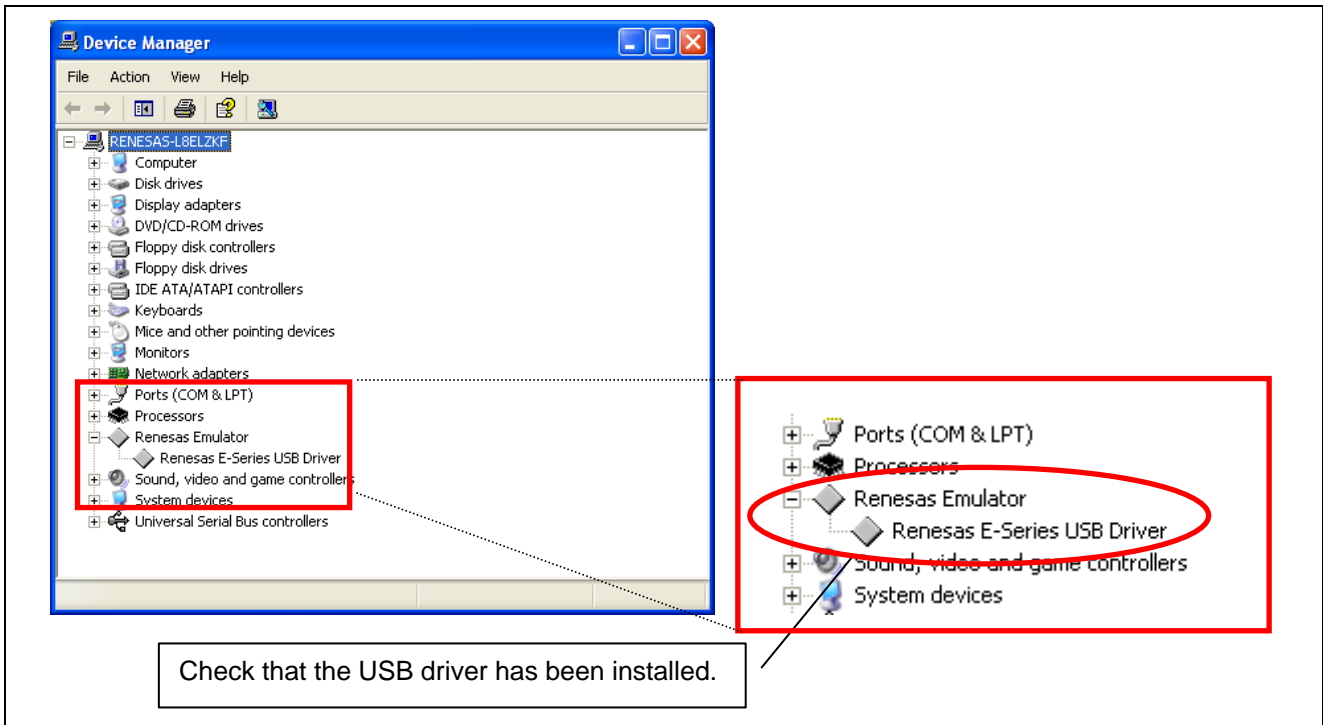


Figure 4.2 Device Manager

Some drivers under the [Renesas Emulator] category may have a [!] or [?] mark attached to the icon. These drivers may not have been successfully installed, so delete them, disconnect and re-connect the USB cable, and then re-install the USB drivers.



Figure 4.3 Display Indicating Failed Installation of a USB Driver

If you cannot find any driver under the [Renesas Emulator] category, check that the emulator software has been installed, disconnect and re-connect the USB cable, and then re-install the USB drivers.

Website and Support

Renesas Electronics Tools Website

<http://www.renesas.com/tools>

Inquiries

<http://www.renesas.com/inquiry>

Revision History

Rev.	Date	Description	
		Page	Summary
1.01	Jan. 16, 2011	—	Newly created
1.02	Mar. 29, 2011	—	The reference origin of "3.ID-Code Protection" is changed.

All trademarks and registered trademarks belong to their respective owners.

Notice

- All information included in this document is current as of the date this document is issued. Such information, however, is subject to change without any prior notice. Before purchasing or using any Renesas Electronics products listed herein, please confirm the latest product information with a Renesas Electronics sales office. Also, please pay regular and careful attention to additional and different information to be disclosed by Renesas Electronics such as that disclosed through our website.
- Renesas Electronics does not assume any liability for infringement of patents, copyrights, or other intellectual property rights of third parties by or arising from the use of Renesas Electronics products or technical information described in this document. No license, express, implied or otherwise, is granted hereby under any patents, copyrights or other intellectual property rights of Renesas Electronics or others.
- You should not alter, modify, copy, or otherwise misappropriate any Renesas Electronics product, whether in whole or in part.
- Descriptions of circuits, software and other related information in this document are provided only to illustrate the operation of semiconductor products and application examples. You are fully responsible for the incorporation of these circuits, software, and information in the design of your equipment. Renesas Electronics assumes no responsibility for any losses incurred by you or third parties arising from the use of these circuits, software, or information.
- When exporting the products or technology described in this document, you should comply with the applicable export control laws and regulations and follow the procedures required by such laws and regulations. You should not use Renesas Electronics products or the technology described in this document for any purpose relating to military applications or use by the military, including but not limited to the development of weapons of mass destruction. Renesas Electronics products and technology may not be used for or incorporated into any products or systems whose manufacture, use, or sale is prohibited under any applicable domestic or foreign laws or regulations.
- Renesas Electronics has used reasonable care in preparing the information included in this document, but Renesas Electronics does not warrant that such information is error free. Renesas Electronics assumes no liability whatsoever for any damages incurred by you resulting from errors in or omissions from the information included herein.
- Renesas Electronics products are classified according to the following three quality grades: "Standard", "High Quality", and "Specific". The recommended applications for each Renesas Electronics product depends on the product's quality grade, as indicated below. You must check the quality grade of each Renesas Electronics product before using it in a particular application. You may not use any Renesas Electronics product for any application categorized as "Specific" without the prior written consent of Renesas Electronics. Further, you may not use any Renesas Electronics product for any application for which it is not intended without the prior written consent of Renesas Electronics. Renesas Electronics shall not be in any way liable for any damages or losses incurred by you or third parties arising from the use of any Renesas Electronics product for an application categorized as "Specific" or for which the product is not intended where you have failed to obtain the prior written consent of Renesas Electronics. The quality grade of each Renesas Electronics product is "Standard" unless otherwise expressly specified in a Renesas Electronics data sheets or data books, etc.
 "Standard": Computers; office equipment; communications equipment; test and measurement equipment; audio and visual equipment; home electronic appliances; machine tools; personal electronic equipment; and industrial robots.
 "High Quality": Transportation equipment (automobiles, trains, ships, etc.); traffic control systems; anti-disaster systems; anti-crime systems; safety equipment; and medical equipment not specifically designed for life support.
 "Specific": Aircraft; aerospace equipment; submersible repeaters; nuclear reactor control systems; medical equipment or systems for life support (e.g. artificial life support devices or systems), surgical implantations, or healthcare intervention (e.g. excision, etc.), and any other applications or purposes that pose a direct threat to human life.
- You should use the Renesas Electronics products described in this document within the range specified by Renesas Electronics, especially with respect to the maximum rating, operating supply voltage range, movement power voltage range, heat radiation characteristics, installation and other product characteristics. Renesas Electronics shall have no liability for malfunctions or damages arising out of the use of Renesas Electronics products beyond such specified ranges.
- Although Renesas Electronics endeavors to improve the quality and reliability of its products, semiconductor products have specific characteristics such as the occurrence of failure at a certain rate and malfunctions under certain use conditions. Further, Renesas Electronics products are not subject to radiation resistance design. Please be sure to implement safety measures to guard them against the possibility of physical injury, and injury or damage caused by fire in the event of the failure of a Renesas Electronics product, such as safety design for hardware and software including but not limited to redundancy, fire control and malfunction prevention, appropriate treatment for aging degradation or any other appropriate measures. Because the evaluation of microcomputer software alone is very difficult, please evaluate the safety of the final products or system manufactured by you.
- Please contact a Renesas Electronics sales office for details as to environmental matters such as the environmental compatibility of each Renesas Electronics product. Please use Renesas Electronics products in compliance with all applicable laws and regulations that regulate the inclusion or use of controlled substances, including without limitation, the EU RoHS Directive. Renesas Electronics assumes no liability for damages or losses occurring as a result of your noncompliance with applicable laws and regulations.
- This document may not be reproduced or duplicated, in any form, in whole or in part, without prior written consent of Renesas Electronics.
- Please contact a Renesas Electronics sales office if you have any questions regarding the information contained in this document or Renesas Electronics products, or if you have any other inquiries.
 (Note 1) "Renesas Electronics" as used in this document means Renesas Electronics Corporation and also includes its majority-owned subsidiaries.
 (Note 2) "Renesas Electronics product(s)" means any product developed or manufactured by or for Renesas Electronics.



SALES OFFICES

Renesas Electronics Corporation

<http://www.renesas.com>

Refer to "<http://www.renesas.com/>" for the latest and detailed information.

Renesas Electronics America Inc.

2880 Scott Boulevard Santa Clara, CA 95050-2554, U.S.A.
Tel: +1-408-588-6000, Fax: +1-408-588-6130

Renesas Electronics Canada Limited

1101 Nicholson Road, Newmarket, Ontario L3Y 9C3, Canada
Tel: +1-905-898-5441, Fax: +1-905-898-3220

Renesas Electronics Europe Limited

Dukes Meadow, Millboard Road, Bourne End, Buckinghamshire, SL8 5FH, U.K.
Tel: +44-1628-585-100, Fax: +44-1628-585-900

Renesas Electronics Europe GmbH

Arcadiastrasse 10, 40472 Düsseldorf, Germany
Tel: +49-211-6503-0, Fax: +49-211-6503-1327

Renesas Electronics (China) Co., Ltd.

7th Floor, Quantum Plaza, No.27 ZhiChunLu Haidian District, Beijing 100083, P.R.China
Tel: +86-10-8235-1155, Fax: +86-10-8235-7679

Renesas Electronics (Shanghai) Co., Ltd.

Unit 204, 205, AZIA Center, No.1233 Lujiazui Ring Rd., Pudong District, Shanghai 200120, China
Tel: +86-21-5877-1818, Fax: +86-21-6887-7858 / -7898

Renesas Electronics Hong Kong Limited

Unit 1601-1613, 16/F., Tower 2, Grand Century Place, 193 Prince Edward Road West, Mongkok, Kowloon, Hong Kong
Tel: +852-2886-9318, Fax: +852-2886-9022/9044

Renesas Electronics Taiwan Co., Ltd.

7F, No. 363 Fu Shing North Road Taipei, Taiwan, R.O.C.
Tel: +886-2-8175-9600, Fax: +886-2-8175-9670

Renesas Electronics Singapore Pte. Ltd.

1 HarbourFront Avenue, #06-10, Keppel Bay Tower, Singapore 098632
Tel: +65-6213-0200, Fax: +65-6278-8001

Renesas Electronics Malaysia Sdn.Bhd.

Unit 906, Block B, Menara Amcorp, Amcorp Trade Centre, No. 18, Jln Persiaran Barat, 46050 Petaling Jaya, Selangor Darul Ehsan, Malaysia
Tel: +60-3-7955-9390, Fax: +60-3-7955-9510

Renesas Electronics Korea Co., Ltd.

11F., Samik Lavied' or Bldg., 720-2 Yeoksam-Dong, Kangnam-Ku, Seoul 135-080, Korea
Tel: +82-2-558-3737, Fax: +82-2-558-5141