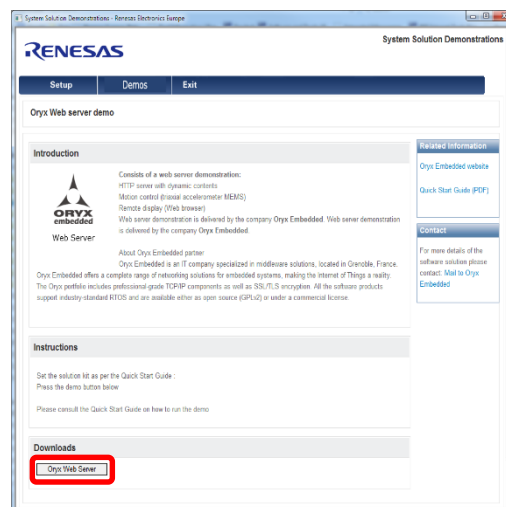


Web Server Quick Start Guide

The Stream it! kit will now be configured to run the Oryx Web server demo.

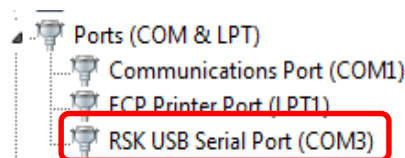
1. Please configure the hardware as described in the set-up page in the GUI and then press the “Oryx Web Server” button as indicated:

SEGGER J-Link V4.98 - Flash download (768 KB)		
Compare	100.0%	0.000s
Erase	66.6%	0.899s
Program	0.0%	
Verify	0.0%	
Erasing range 0x18100000 - 0x1813FFFF (1 sector, 256 KB) 0.899s		



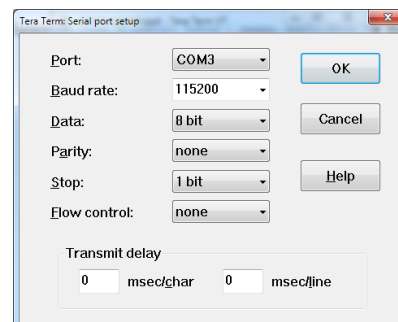
2. The Demo application will now be loaded into the SPI flash on the Stream it! board.
3. Open a suitable Windows serial communication application: TeraTerm (please see the installer software\Setup_teraterm-4.86.exe on the CD).

4. When the Stream it! board powers up, it will enumerate as a new serial port, “RSK USB Port”. Please check the exact com port in the Windows device manager as below. In this case COM3
 - a. Note: If this is the first time you are using the Renesas RSK USB port, you will need to select the driver from the CD (\RSK USB Port driver) when asked.



5. Configure the Windows serial communication application for the com port as above at 115200 baud as below.

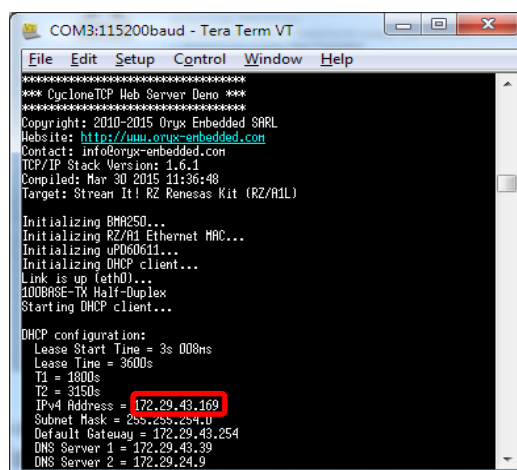
6. Press the reset button on the board to restart the application. The Stream it! board will send a sign on message to the serial port and attempt a DHCP connection to the Ethernet network.
7. The Stream it! kit will attempt to make a DHCP connection to the network for up to 15 seconds. If the DHCP connection completes correctly, an IPv4 IP address will be reported (see across). Please make a note of this address. In this case, 172.29.43.169 but this will be different in your configuration.



8. If your network does NOT support DHCP, you will need to:
 - a. Disconnect your PC from the network.
 - b. Make a direct Ethernet connection between your PC and the Stream it! Board.
 - c. Power up the Stream it! board and wait 15 seconds. A fixed IP address of 192.168.0.161 will be allocated to the Stream it! Board.

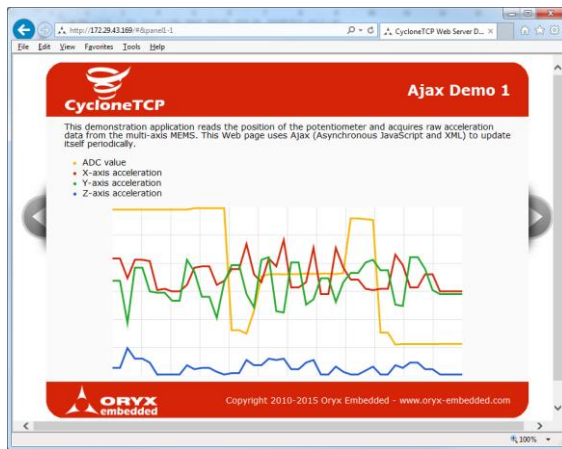
9. Open your Web browser and enter the IP address above (for DHCP see step 7 or for fixed IP see “Fixed IP appendix” in Stream it! Video QSG).

10. Four demo screens are now available, see below.

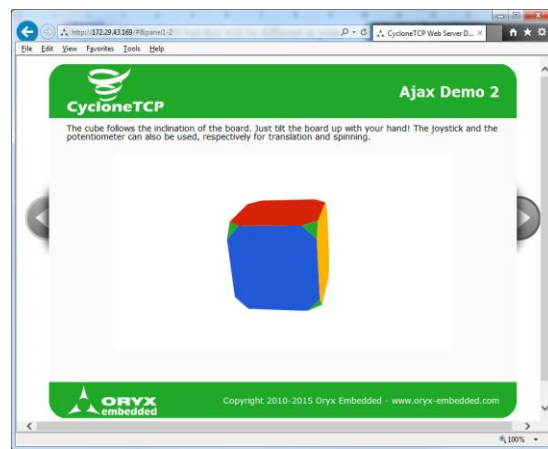


Stream it!

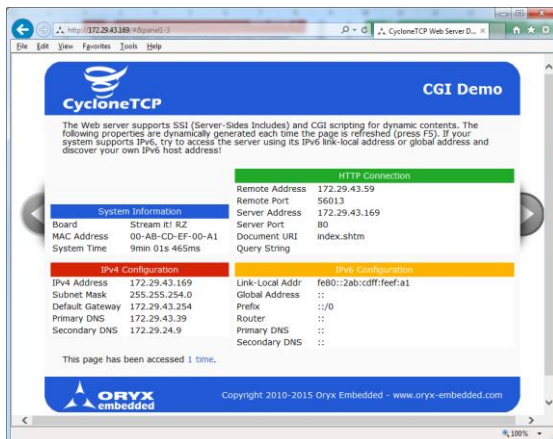
Web Server Quick Start Guide



Graph display of the Stream-It accelerometers and ADC value



Rotating cube based on accelerometers



SSI (Server-Sides Includes) and CGI scripting for dynamic

The screenshot shows a web browser window titled "CycloneTCP Web Server Demo 4". The page has an orange header with the "CycloneTCP" logo and "SMTP Demo". Below the header, there is a text description: "If your LAN is connected to the Internet, this form allows you to send an e-mail. Fill in the required fields and press the 'Send' button. It may take a few seconds to complete the operation if your SMTP server requires secure SSL/TLS connection." The form is divided into sections: "Authentication Information" (SMTP Server: smtp.example.com, Port: 25, Use SSL/TLS checkbox), "User Name" (user), "Password" (password field), "Message" (From: from@example.com, Recipient: recipient@example.com, Date: , Subject: CycloneTCP SMTP Demo), and "Your message here." (text area). At the bottom, there is an orange footer with the "ORyx embedded" logo and copyright information: "Copyright 2010-2015 Oryx Embedded - www.oryx-embedded.com".

SMTP e-mail server demo

If you wish to restore to default settings after changing the configuration, please push the reset button while the user button is pressed and then release both buttons.