

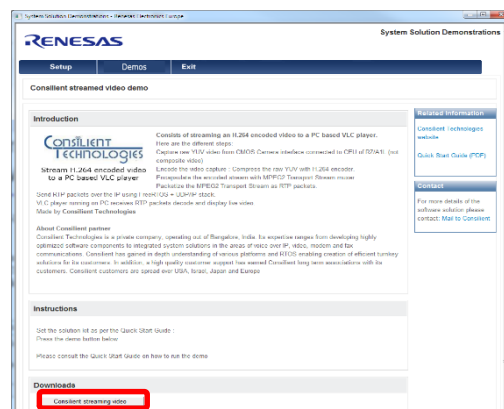
Web Video Streaming Quick Start Guide

The Stream it! kit will now be configured to run the Consilient Web Video Streaming demo.

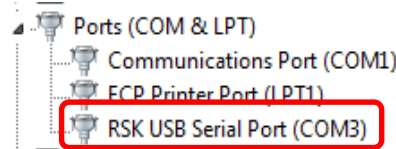
1. Please configure the hardware as described in the set-up page in the GUI and then press the “Consilient Streaming Video” button as indicated:

SEGGER J-Link V4.98 - Flash download (768 KB)

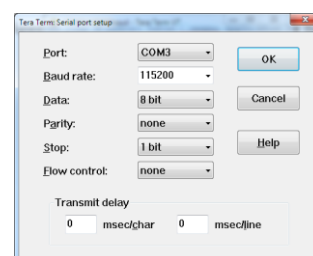
Compare	100.0%	0.000s
Erase	66.6%	0.899s
Program	0.0%	
Verify	0.0%	
Erasing range 0x18100000 - 0x1813FFFF (1 sector, 256 KB)		
		0.899s



1. The Demo application will now be loaded into the SPI flash on the Stream it! board.
2. Open a suitable Windows serial communication application: TeraTerm (please see the installer software\Setup_teraterm-4.86.exe on the CD).
3. When the Stream it! board powers up, it will enumerate as a new serial port, “RSK USB Port”. Please check the exact com port in the Windows device manager as below. In this case COM3.



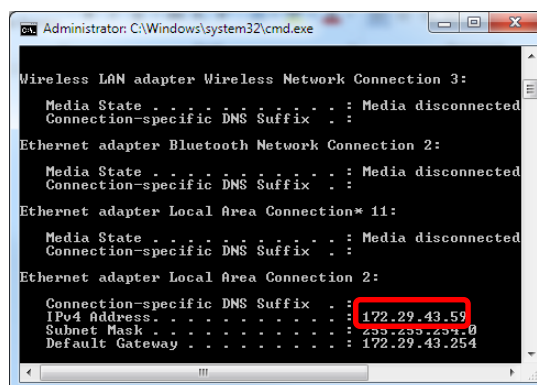
- a. Note: If this is the first time you are using the Renesas RSK USB port, you will need to select the driver from the CD (\RSK USB Port driver) when asked.
4. Configure the Windows serial communication application for the com port as above at 115200 baud as indicated.



5. You will need to find out the IP address of your PC, so the video data can be streamed to it.
 - a. In the Windows Start Menu “Search programs and files” dialog, enter CMD.



- b. At the command prompt enter “ipconfig”.
- c. The resultant display will indicate your current IP address. Please note, this may change each time your PC is connected to your network.
- d. Please make a note of your IP address, in this case, 172.29.43.59



Web Video Streaming Quick Start Guide

6. We now need to configure the Stream it! board to send video information to your PC. This is performed by answering a number of questions in the serial communication application.
7. Please note, the entries below are for indication only and can be adjusted to fit your requirements as necessary. Should your network not support DHCP, please select Fixed IP and refer to the “Fixed IP appendix below”
 - a. IP Addressing mode (0 – Static, 1 – DHCP) 1
 - b. Remote IP address: Enter your IP address (see 5D) or Fixed IP from 14b below as necessary.
 - c. Remote RTP Port: 4000
 - d. Video resolution (0 - QVGA, 1-VGA): 0
 - e. Video frame rate (1 to 25): 25
 - f. Video bit rate (64 to 1024): 1024
8. After completing these entries the Stream it! board will automatically save them in SPI flash and start video streaming.
9. We must now install and start the VLC view on your PC. Please see software\Setup_vlc-2.2.0-win32.exe on the CD.
10. Start the VLC Media player (Fig. 1).
11. Select Open Network Stream (Fig. 2).
12. Enter rtp:// and your IP address and RTP port (see 7b & 7c above) for example rtp://172.29.43.59:4000 and press play.

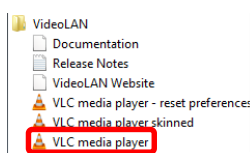
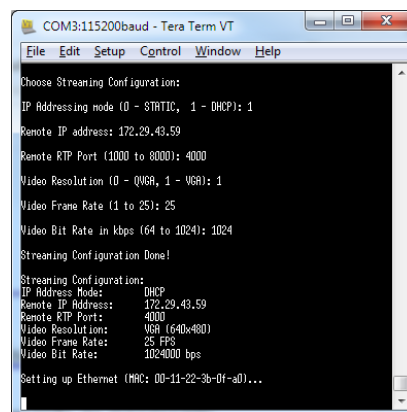


Fig 1

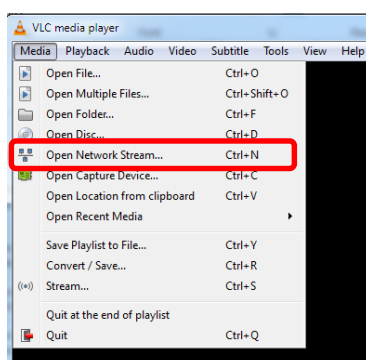


Fig 2

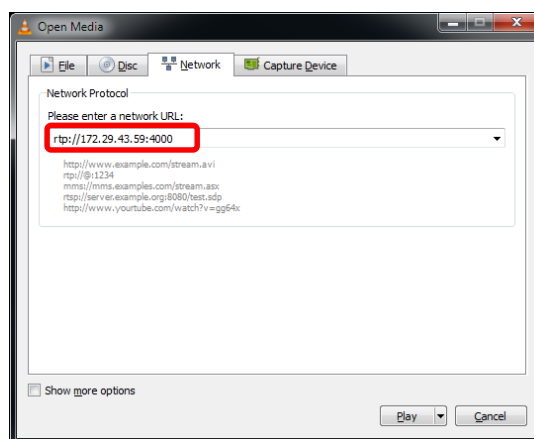
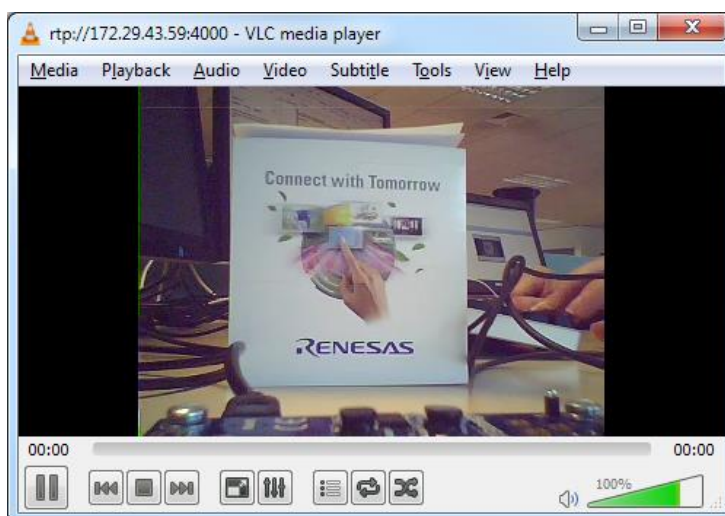


Fig 3

13. Video streaming should now start up.



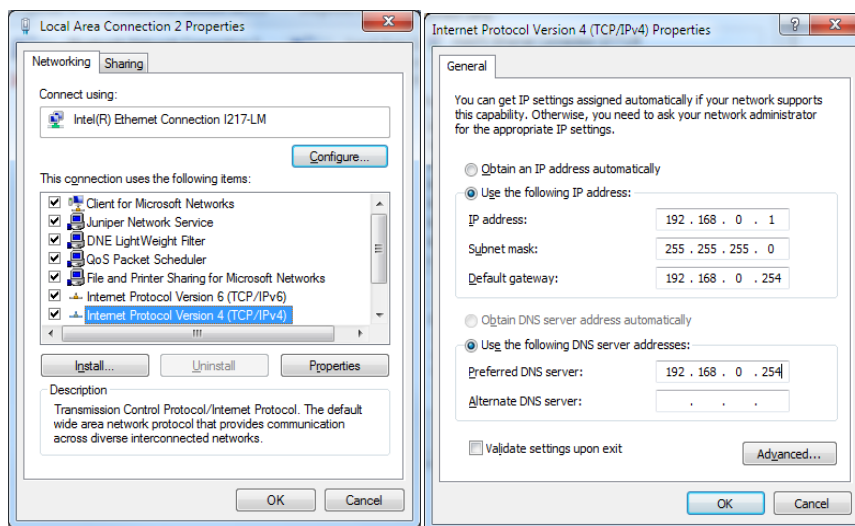
Web Video Streaming Quick Start Guide

Fixed IP appendix

If your network configuration does not support DHCP, you will need to allocate a fixed IP for your PC to test the Stream it! kit.

14. Please follow the procedure below.

- a) Disconnect your PC from the network.
- b) Make a direct Ethernet connection between your PC and the Stream it! board.
- c) Open your network properties.
- d) Select IPV4 properties.
- e) Set or make a note of the fixed IP address. This example uses 192.168.0.1
- f) Power up the Stream it! board as per step 3&4 above.



- g) Enter 0 on the terminal to select Static (IP address).
- h) IP Address: Enter a suitable IP address for the Stream it! board such as 192.168.0.2
- i) Gateway IP Address: Enter a suitable gateway address such as 192.168.0.254
- j) DNS IP address: Enter a suitable DNS address such as 192.168.0.254
- k) Net Mask address: Enter a suitable mask address such as 255.255.255.0
- l) Follow steps above from step 7b.