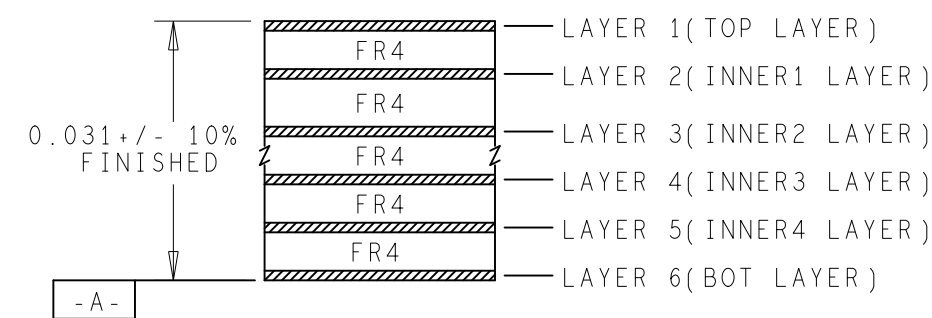
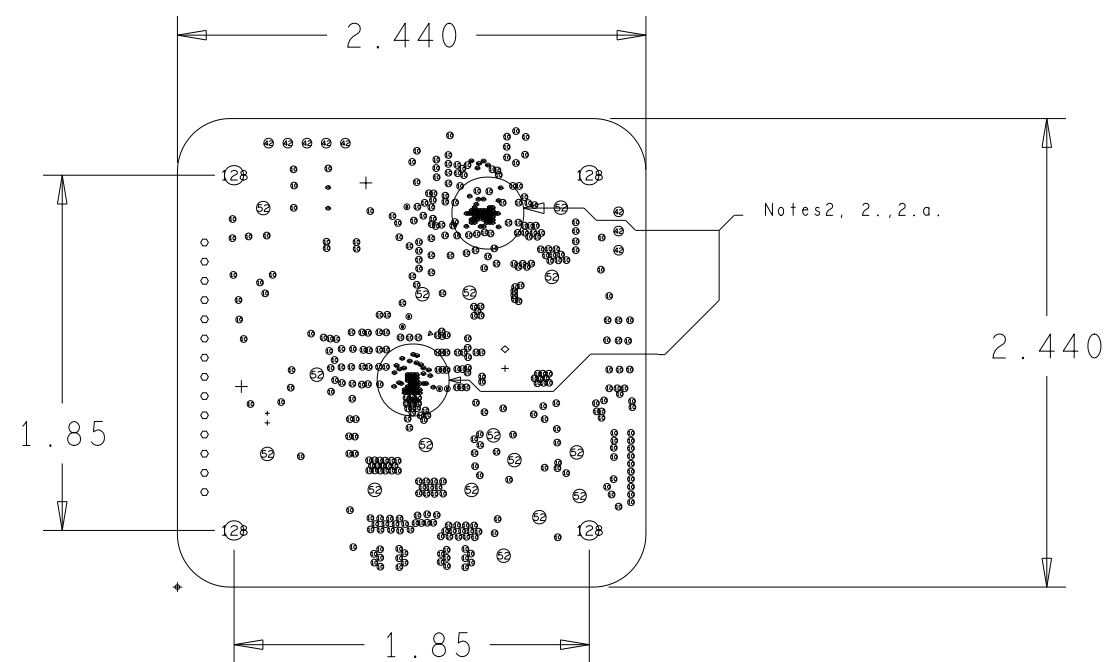


Notes2:

- 1.All drill sizes are finished plated hole sizes
- 2.Fill vias under BGAs with non-conductive via fill material
 - a.Vias under BGAs will be back-filled and plated to be within 1mil level with the rest of Top copper
- 3.This board must be Lead-Free (Gold Immersion)
- 4.Gerber files and IPC-D-356 file must be compared and confirmed that they are consistent
- 5.Board requires Top and Bottom silkscreen
- 6.Use FR4 material
- 7.Use green soldermask
- 8.Use 1 oz copper on all layers



DETAIL A
SCALE: NONE



DRILL CHART: TOP to BOTTOM				
ALL UNITS ARE IN MILS				
FIGURE	FINISHED_SIZE	TOLERANCE_DRILL	PLATED	QTY
•	5.0	+1.0/-1.0	PLATED	57
•	5.5	+1.0/-1.0	PLATED	17
•	8.0	+1.0/-1.0	PLATED	5
•	10.0	+2.0/-3.0	PLATED	392
•	28.0	+0.0/-0.0	PLATED	1
•	28.0	+4.0/-2.0	PLATED	1
⊙	42.0	+3.0/-3.0	PLATED	8
+	42.0	+3.0/-3.0	PLATED	1
◊	42.0	+3.0/-3.0	PLATED	1
◊	44.0	+0.0/-0.0	PLATED	14
	45.0	+3.0/-3.0	PLATED	1
⊙	52.0	+3.0/-3.0	PLATED	16
+	65.0	+3.0/-3.0	PLATED	2
⊙	128.0	+3.0/-3.0	NON-PLATED	4

DRILL CHART: TOP to INNER3				
ALL UNITS ARE IN MILS				
FIGURE	FINISHED_SIZE	TOLERANCE_DRILL	PLATED	QTY
•	5.0	+1.0/-1.0	PLATED	37