

[Upgrade to revision]

R20TS0676EJ0100

QE for Display[RX]V2.1.0:

Rev.1.00

Apr 01, 2021

Development Assistance Tool for Display Applications

Overview

The product in the title has been revised and its version number has been changed as follows.

- (1) QE for Display[RX]: Development Assistance Tool for Display: V2.0.0 to V2.1.0

1. Version to Be Updated

- QE for Display[RX]: Development Assistance Tool for Display V2.0.0 or earlier

2. Items Revised

The major revision points are described in the following sections. Refer to the following release note for details.

- QE for Display[RX]: Development Assistance Tool for Display  
QE for Display[RX] V2.1.0 Release Note

<https://www.renesas.com/search/keyword-search.html#genre=document&q=r20ut4967>

For the list of supported devices for QE for Display[RX], refer to the following URL:

<https://www.renesas.com/qe-display>

2.1 Improvements to Functionality

- Enhanced integration with Aeropoint GUI for RX from CRI Middleware

- (1) The workflow view that makes a series of configurations straightforward

You can now select Aeropoint® GUI, provided by CRI Middleware, in QE for Display[RX] GUI drawing tool to directly start the GUI drawing tool.

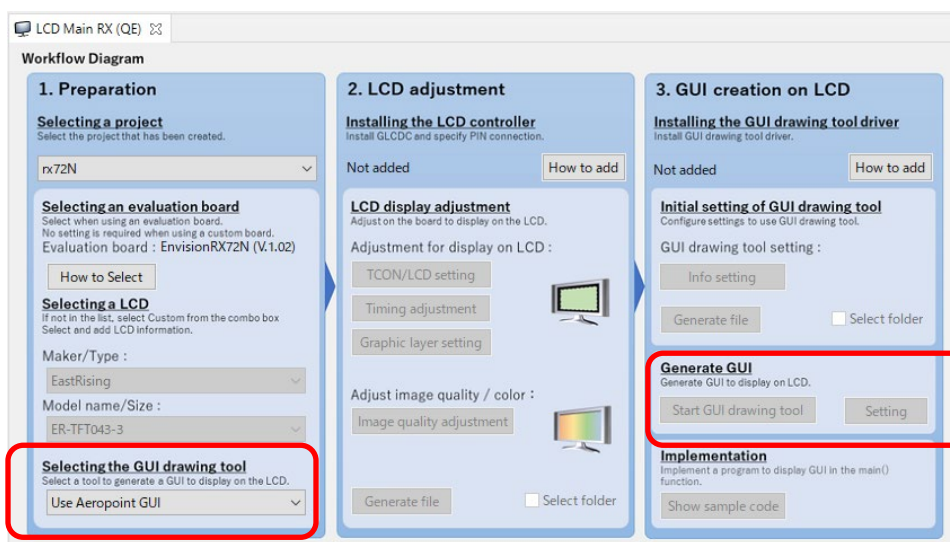


Figure 1. [Workflow Diagram] of QE for Display[RX]

(2) Free GUI library for the RX family

The GUI library is provided as a FIT module, so it can be easily integrated in a user program. For details about Firmware Integration Technology (FIT), refer to the following URL:

<https://www.renesas.com/fit>

- Aeropoint FIT r\_aeropoint\_rx v1.00
- RX family graphic LCD controller module FIT r\_gldcd\_rx v1.5.0

(3) Easier system configuration and integration

The QE for Display adjustment results (for example, timing and image quality) can be reflected to a FIT module added to a user project, reducing the need for merging the results to the user project.

Aeropoint GUI for RX from CRI is GUI tool that allows GUI creation in PowerPoint®, excellent color reduction technology and audio/video playback. For any inquiries, contact CRI Middleware Co., Ltd.

<https://www.cri-mw.co.jp/product/embedded/Aeropoint/GUI.html>

### 3. Updating Your Product

To update your program, use either of the following methods.

#### 3.1 Updating from the e<sup>2</sup> studio Installer

For the method of updating e<sup>2</sup> studio, refer to section 3, “Updating Your Product” in RENESAS TOOL NEWS, Document No. R20TS0643EJ0100.

<https://www.renesas.com/search/keyword-search.html#genre=document&q=r20ts0643>

[Upgrade to version] e<sup>2</sup> studio Integrated Development Environment 2021- 01

In the [Additional Software] pane of the e<sup>2</sup> studio installation wizard, select QE for Display.

Note 1: This step is disabled in situations where an internet connection is not available. In that case, perform an update following the instructions in 3.2.

Note 2: Use e<sup>2</sup> studio 2020-07 or later versions.

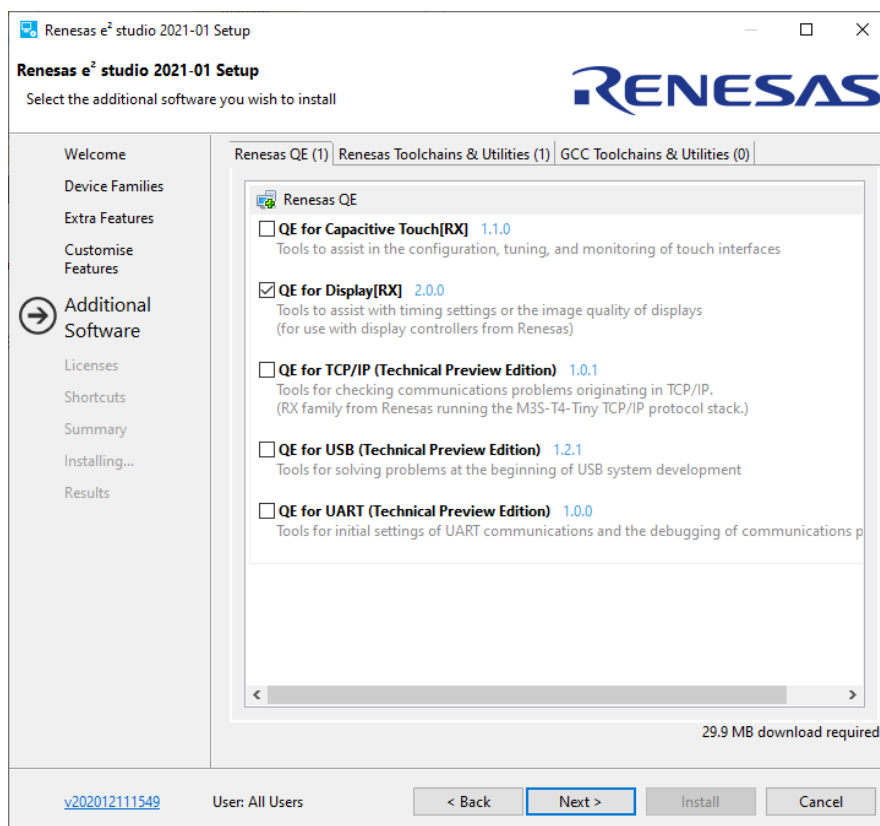


Figure 2 Updating from the e<sup>2</sup> studio Installer

### 3.2 Using the QE Installer

Download the installer from the URL below and proceed with the installation.

- QE for Display: Development Assistance Tool for Display

<https://www.renesas.com/ge-display>

QE for Display Package V2.1.0

Use the following procedure to install the product.

- (1) Activate e<sup>2</sup> studio.
- (2) Click [Help], and then click the [Install New Software...] menu to open the [Install] dialog box.
- (3) Click the [Add...] button to open the [Add Repository] dialog box.
- (4) Click the [Archive...] button, select the installation file (zip file) in the opened file selection dialog box, and then click the [Open] button.
- (5) Click the [OK] button in the [Add Repository] dialog box.
- (6) Expand the [Renesas QE] item shown in the [Install] dialog box, select the [Renesas QE for Display[RX] ]check box, and then click the [Next>] button.  
\* You can check off the [Contact all update sites during install to find required software] check box to shorten the installation time.
- (7) Confirm that the installation target is correct, and then click the [Next>] button.
- (8) After checking the license, select the [I agree to the terms of the license agreements] radio button, and then click the [Finish] button.
- (9) When the dialog box for selecting a trusted certificate appears, check the displayed certificate, and then click the [OK] button to continue installation.
- (10) Restart e<sup>2</sup> studio according to the instructions on the screen.
- (11) Start this product from the [Renesas Views] - [Renesas QE] menu of e<sup>2</sup> studio.  
For details about how to use this product, refer to the QE items from the [Help] menu of e<sup>2</sup> studio.

**Revision History**

Rev.	Date	Description	
		Page	Summary
1.00	Apr.01.21	-	First edition issued

Renesas Electronics has used reasonable care in preparing the information included in this document, but Renesas Electronics does not warrant that such information is error free. Renesas Electronics assumes no liability whatsoever for any damages incurred by you resulting from errors in or omissions from the information included herein.

The past news contents have been based on information at the time of publication. Now changed or invalid information may be included.

The URL in the Tool News also may be subject to change or become invalid without prior notice.

**Corporate Headquarters**

TOYOSU FORESIA, 3- 2- 24 Toyosu,  
Koto-ku, Tokyo 135- 0061, Japan

[www.renesas.com](http://www.renesas.com)

**Trademarks**

Renesas and the Renesas logo are trademarks of Renesas Electronics Corporation. All trademarks and registered trademarks are the property of their respective owners.

**Contact information**

For further information on a product, technology, the most up-to-date version of a document, or your nearest sales office, please visit:

[www.renesas.com/contact/](http://www.renesas.com/contact/)