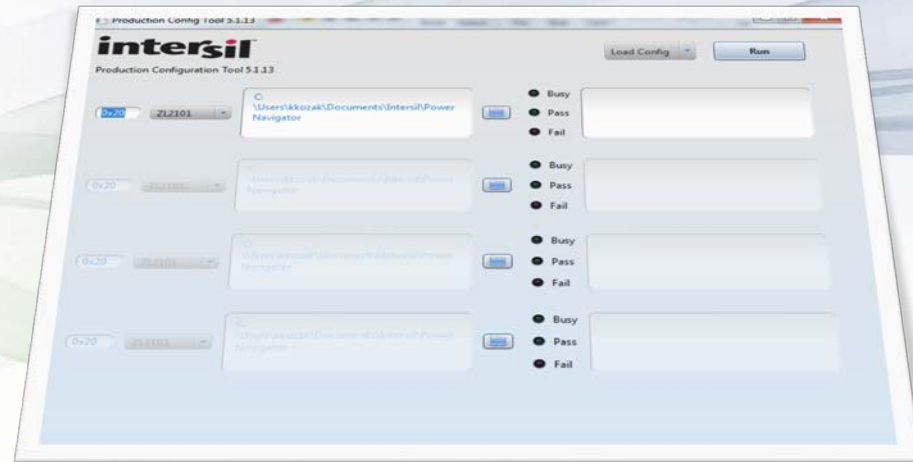


# Production Configuration Utility

## Version 5.3.45

USER GUIDE



# PCT Overview

- **What is PCT?**

- Production configuration tool for quick loading and verification of configuration files into Intersil Digital Power controller/modules.

- **Features**

- Program or verify configuration for multiple devices at the same time
- Supports all devices supported by PowerNavigator
- Data logging to error.txt file

- **Both standard Configuration files and production HEX files can be used**

- PCT will load and verify either format

## **PCT 5.3.45 – Supported Devices**

- **Integrated FET Digital Regulators: ZL2101, ZL2102**
- **Digital Controllers: ZL6105, ZL8101, ZL880x, ZLS4010**
- **Digital Multiphase: ISL6388, ISL6398, ISL681xx, ISL691xx**
- **Digital Modules: ZL9006M, ZL9010M, ZL9101M, ZL9117M, ISL827xM**

# Instructions

- **Installation**

- Double-click “configCheckSetup.exe” and follow instructions
- Installer will place icon on Desktop and inside Start Menu

- **Running**

- Connect ZLUSBEVAL3Z dongle to computer and power system’s PMBus header
- Ensure input voltage is provided to all devices to be programmed.

# Device Selection Screen

**Production Config Tool 5.3.45**

File

**intersil™**  
Production Configuration Tool 5.3.45

Select device type

Load Config Run

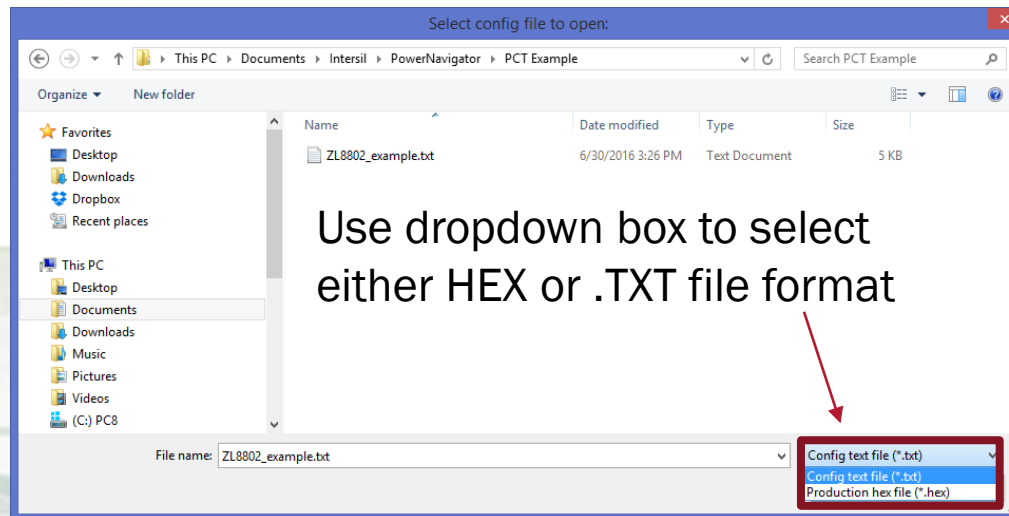
PMBus Address	Device Type	File Path	Busy	Pass	Fail
0x28	ZL8802	C:\Users\BHOWELL\Documents\Intersil\PowerNavigator	<input type="radio"/>	<input type="radio"/>	<input type="radio"/>
0x2E	ZL2102	C:\Users\BHOWELL\Documents\Intersil\PowerNavigator	<input type="radio"/>	<input type="radio"/>	<input type="radio"/>
0x25	ISL8272M	C:\Users\BHOWELL\Documents\Intersil\PowerNavigator	<input type="radio"/>	<input type="radio"/>	<input type="radio"/>
0x60	ISL69124	C:\Users\BHOWELL\Documents\Intersil\PowerNavigator	<input type="radio"/>	<input type="radio"/>	<input type="radio"/>

Set Device PMBus address

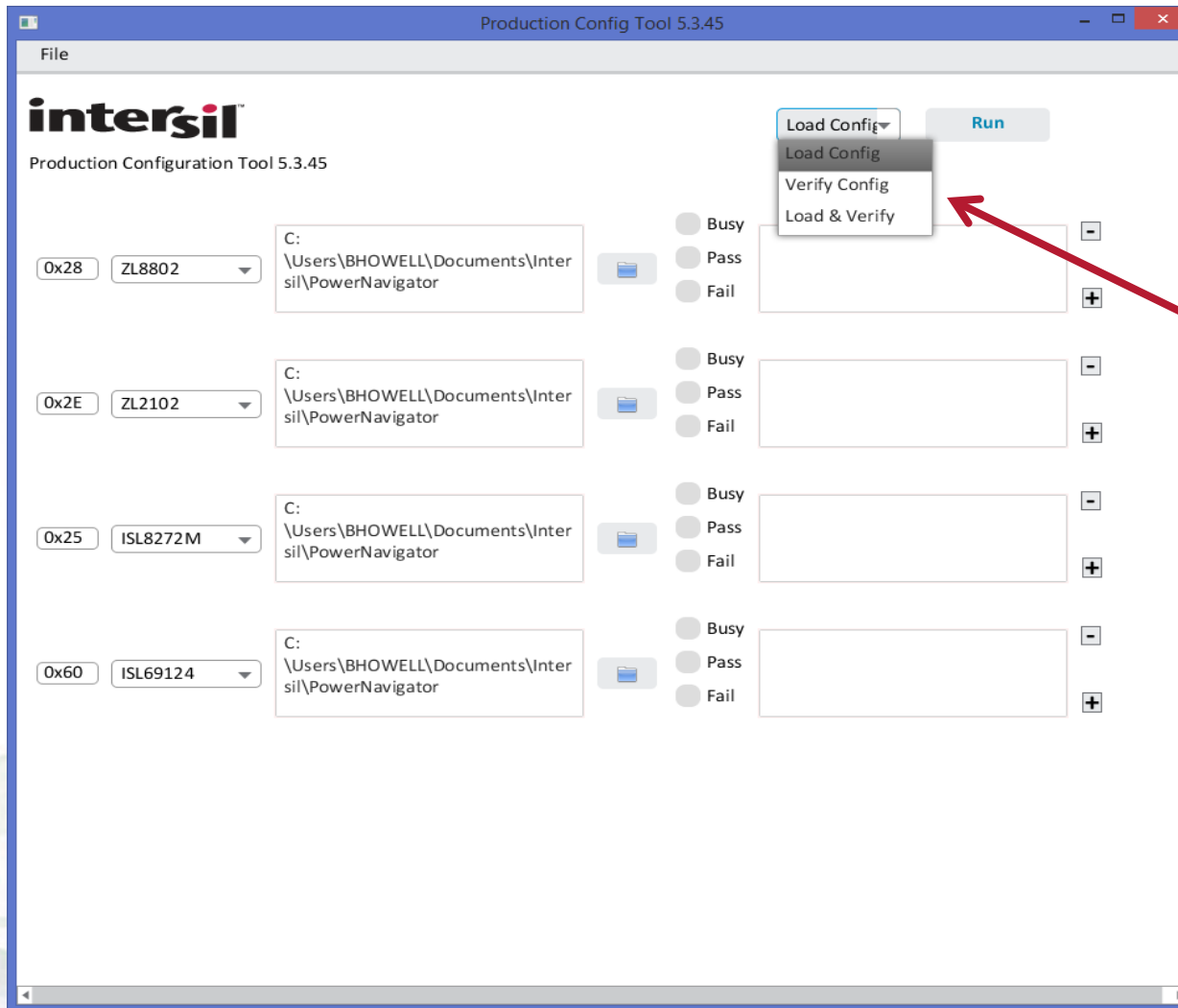
Navigate to configuration file to be loaded

# PCT: Hex and .TXT file Support

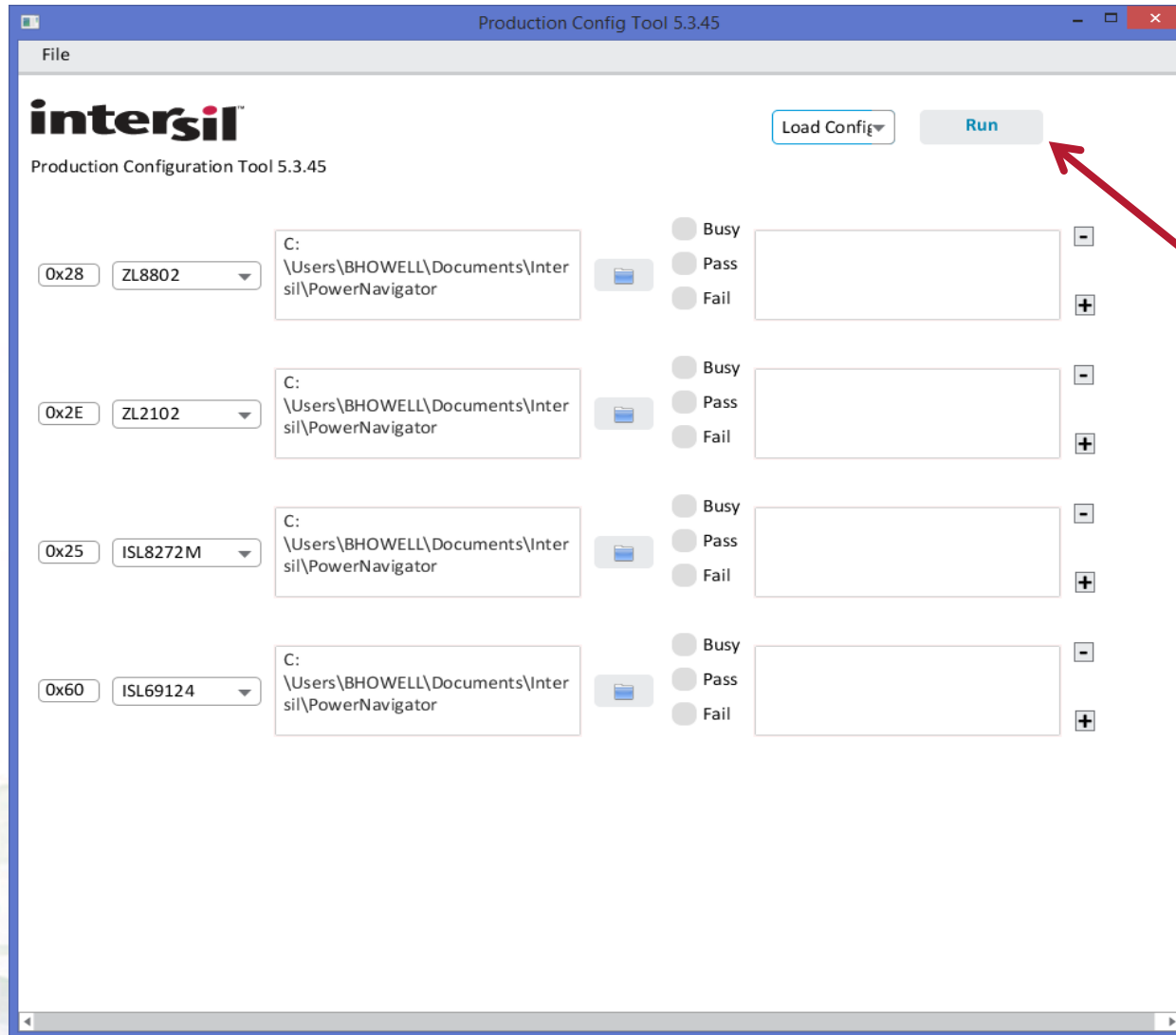
- **PCT supports both HEX and .TXT (Intersil configuration files) file load**
  - Digital Multiphase products only support HEX format
  - Digital Point of Load and Digital Modules support both HEX and TXT
- **When selecting file, use drop down box to select either .txt or .hex files**



Modes: **Load**: config file to device or  
**Verify**: existing device against a config file  
**Load & Verify**: Load and Verify in single step

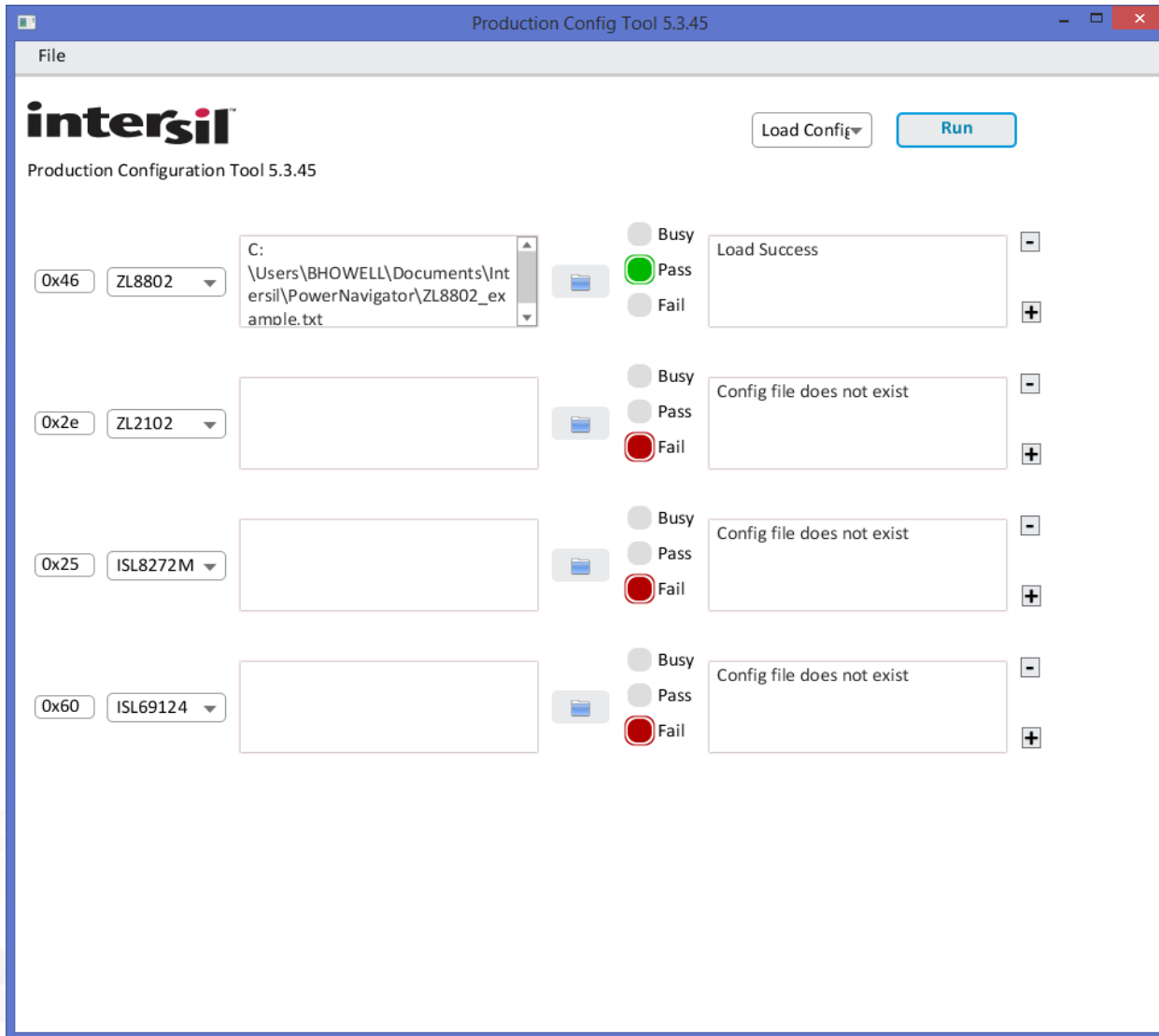


Press “Run” to start load or verify process.  
Status lights show pass/fail results





# Configuration File Load



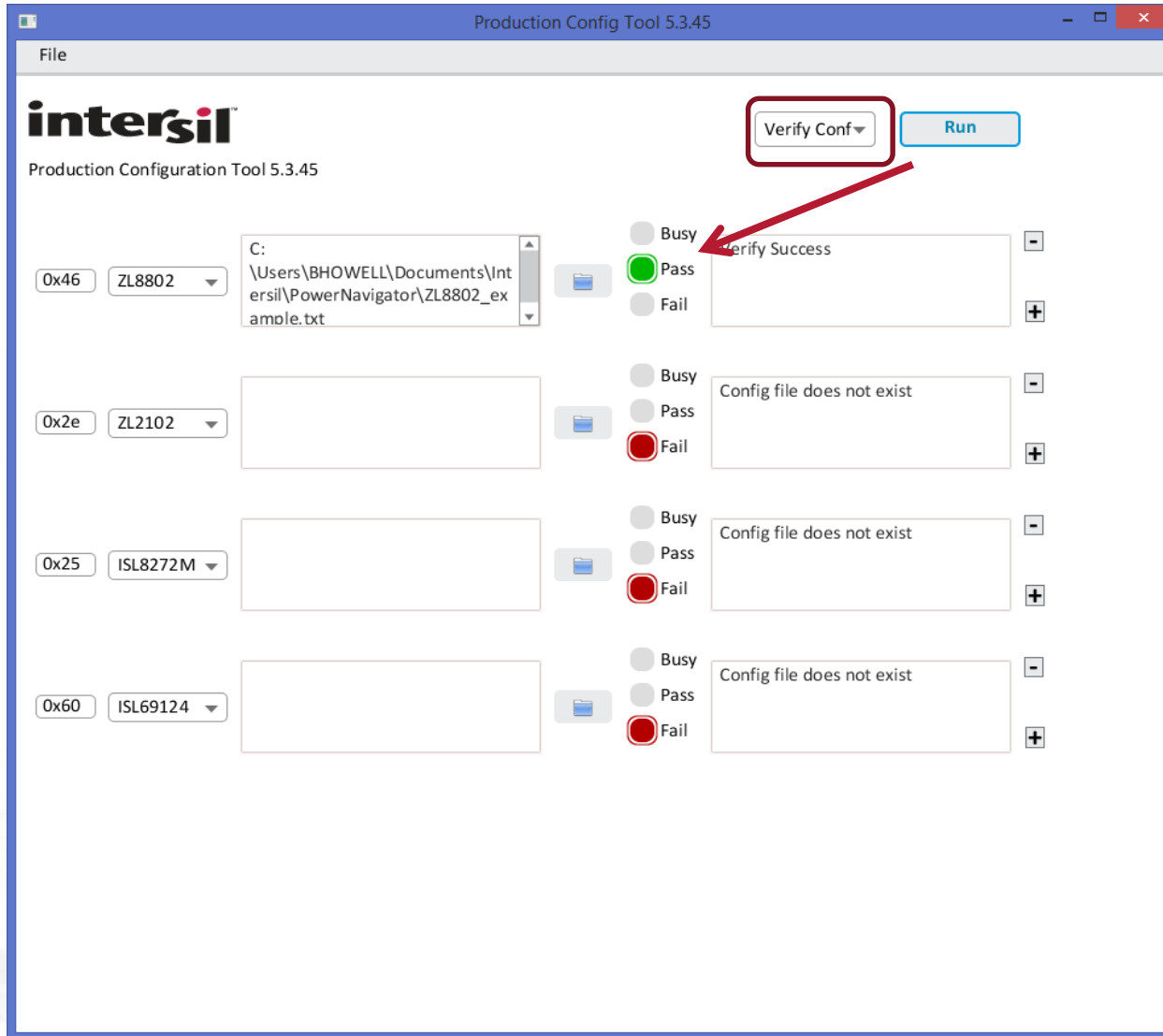
Successful Config Load

Unsuccessful Config Load

Unsuccessful Config Load

Unsuccessful Config Load

# Configuration File Verify



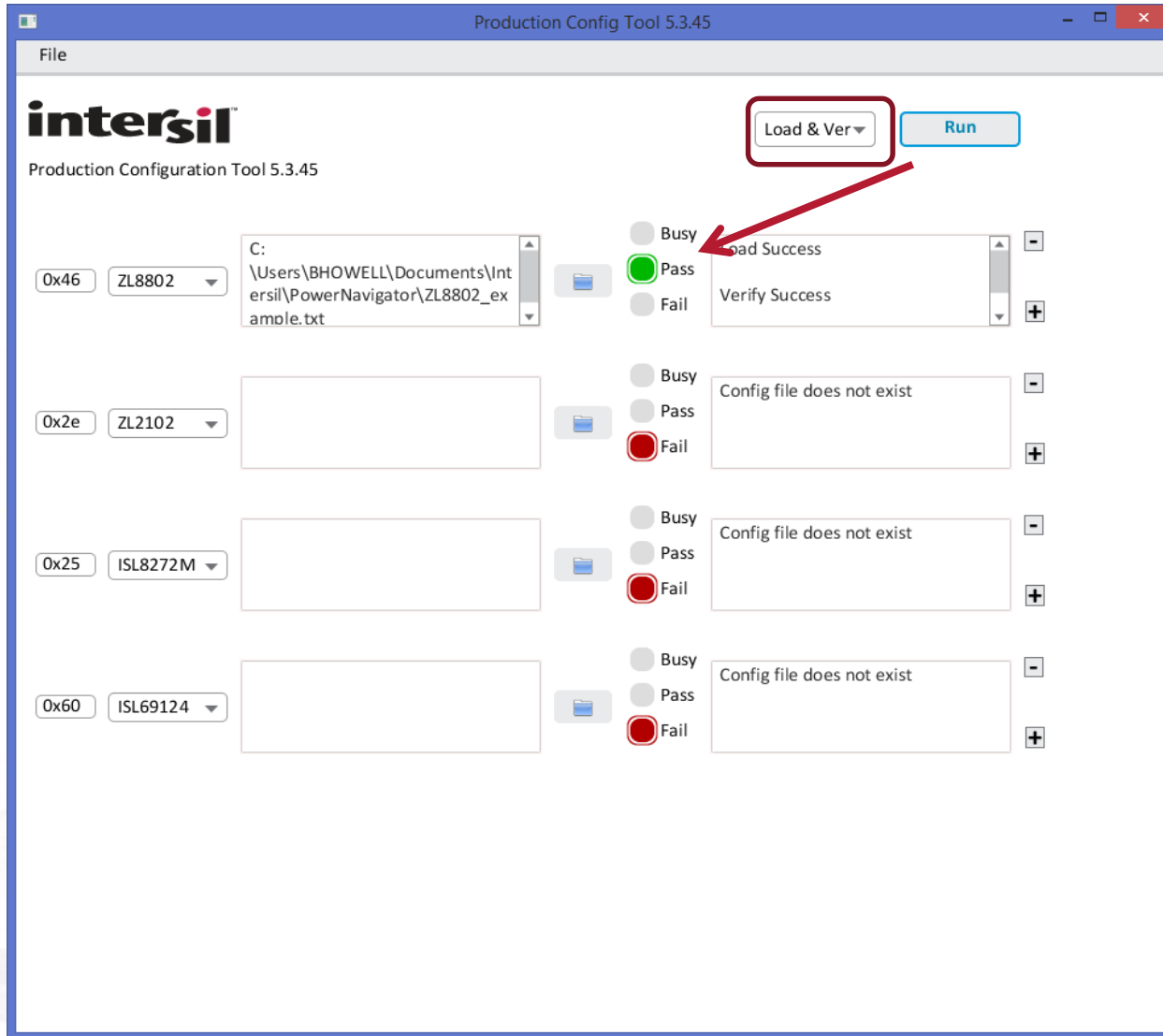
Successful Config Verify

Unsuccessful Config Verify

Unsuccessful Config Verify

Unsuccessful Config Verify

# Configuration File Load & Verify



Successful Config Load & Verify

Unsuccessful Config Verify

Unsuccessful Config Verify

Unsuccessful Config Verify

# Adding additional Rows

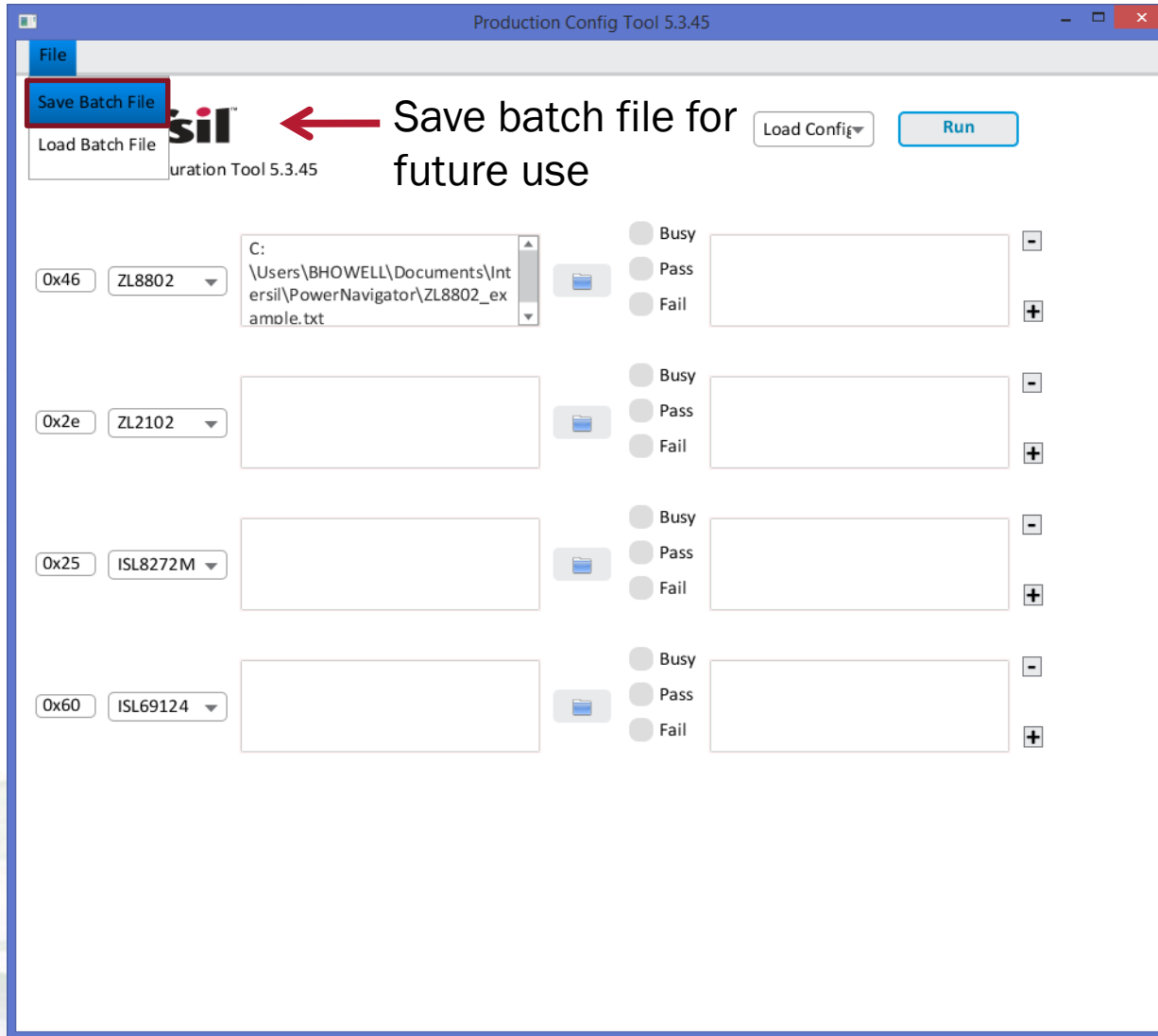
The screenshot shows the 'Production Config Tool 5.3.45' window. The interface includes a menu bar with 'File', the Intersil logo, and buttons for 'Load Config' and 'Run'. Below the logo, the text 'Production Configuration Tool 5.3.45' is displayed. The main area contains a list of four device configurations. Each configuration row consists of a device ID (e.g., 0x46, 0x2e, 0x25, 0x60), a device name (e.g., ZL8802, ZL2102, ISL8272M, ISL69124), a file path (e.g., C:\Users\BHOWELL\Documents\Intersil\PowerNavigator\ZL8802\_example.txt), and a set of three radio buttons labeled 'Busy', 'Pass', and 'Fail'. To the right of each row is a plus sign button. A red arrow points to the plus sign button at the bottom right of the list.

Click to add rows to program additional devices

# PCT – Batch Files

- **PCT allows users to create “Batch Files”, saving PCT configuration for future use**
  - Save address and device types
  - Automatically points to saved configuration files
  - Individual Batch files can be saved on a per board basis.

# Saving Batch files for future use



**intersil**<sup>TM</sup>

[www.intersil.com](http://www.intersil.com)